

Quarterly Report

Email completed report to reports@rml4.utah.edu

Name and address of reporting institution:

Becker Medical Library, Washington University School of Medicine
660 S. Euclid Ave., Campus Box 8132
St. Louis, MO 63110-1010

Project Title: Mobile School Health Information Initiative (MoSHI)

Name of person submitting report: Will Olmstadt

Email address: olm stadtw@wusm.wustl.edu

Telephone number: 314-362-4734

Reporting Period start date: May 1, 2010

Reporting Period end date: July 31, 2010

Publicity:

There is no additional publicity to report for this quarter.

Outreach:

As noted in the funding proposal, this quarter spanned the summer vacation for school librarians in the St. Louis metropolitan area, most of whom are on 9-month contracts. Consequently, there are no training sessions to report from this quarter.

Please note we have already met the project requirements by delivering more than 3 sessions during the first quarter.

Other accomplishments:

The MoSHI project provided unexpected, welcome leverage with Washington University School of Medicine faculty who want to modify the project as a model for their own health information outreach. We are happy to report that, partially because of the success of the MoSHI project, investigator Will Olmstadt will be attached to an NIH R01 grant to train African American populations in north St. Louis to find quality health information. This is a 5-year commitment working with our nationally-recognized Alzheimer Disease Research Center.

We continue to work with our community partner, Gateway Media Literacy Partners, on projects outside of the MoSHI project. On October 6, 2010, as part of national Media Literacy Week activities, Will Olmstadt and Judy Hansen will host a panel, *Mental Health and Substance Abuse Messages: Truth or Consequences*, at Becker Medical Library. The panel features 2 local experts dissecting messages in the media about eating disorders and substance abuse, with tips on how educators can make students more informed consumers of media.

Finally, we are very happy to report that a summary of the MoSHI project has been accepted for round table presentation at the American Public Health Association annual meeting in Denver, Colorado, on November 9, 2010. The official program abstract is at <http://apha.confex.com/apha/138am/webprogram/Session30901.html>.

Target audience:

Not applicable for this quarter.

Goals, Outcomes, Objectives:

Per the terms of our proposal budget, we are accepted to deliver a paper about the MoSHI project at the MidContinental Medical Library Association meeting in Wichita, KS, on Friday, October 8, 2010.

Evaluation:

In-Class Evaluations

We had 40 usable in-class evaluations returned, not 39 as noted in the previous quarterly report. (One evaluation was hidden in a box.) However, the missing evaluation did not appreciably change the overall results of the in-class evaluation. Average satisfaction with the course has been 4.875 out of 5, and average satisfaction with the instructors has been 4.975 out of 5.

The breakdown of participants by type of library is now:

Type of library	MoSHI Participants
College	1
District*	9
Elementary	13
Middle grades	3
High school	5
Public	9
TOTAL	40

*"District" means the participant indicated responsibility for more than one grade level or type of library.

Three-month evaluations

Investigators will send three-month evaluations to participants after Labor Day, in an effort to ensure all participants have resumed school and might be checking work e-mail addresses. Those results will be included on the next quarterly report.

Even with a reminder, we are only achieving a response rate of 66% on the follow-up evaluations. This does not meet the stated goal in our logic model of an 80% response rate for both evaluations. We hope to improve the overall follow-up rate by reaching people when they have just returned to school after a long break.

Mapping Results

As part of our evaluation, investigator Will Olmstadt worked with a Washington University GIS analyst to create metropolitan and statewide maps of MoSHI participants by ZIP code. These maps are in appendices to this report and only cover participants through July 2010. We plan to update these maps as appropriate.

Using GIS shows our impact beyond the metropolitan area. We are pleased to see participants as far away as the Kansas City metropolitan area, western Illinois, and south central Missouri.

Impacts and Observations:

Please see “Other Accomplishments” above for examples of the impact the MoSHI curriculum has had in working with our faculty and our community partners.

Planned Activities:

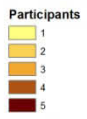
- The St. Louis Suburban School Librarians Association has approached us about delivering the MoSHI curriculum during an upcoming meeting. We will know more after August 17, 2010. This would be an ideal audience as it has the potential to reach both public and private school librarians.
- The Parkway School District, a large district in suburban St. Louis county, remains interested in the MoSHI curriculum, but asked to defer scheduling it until they returned for the new school year.
- We will be revising the curriculum workbook to reflect the new Medline Plus.

Appendix

These maps are current through July 2010 and include all participants for whom we have ZIP codes from the OARF.

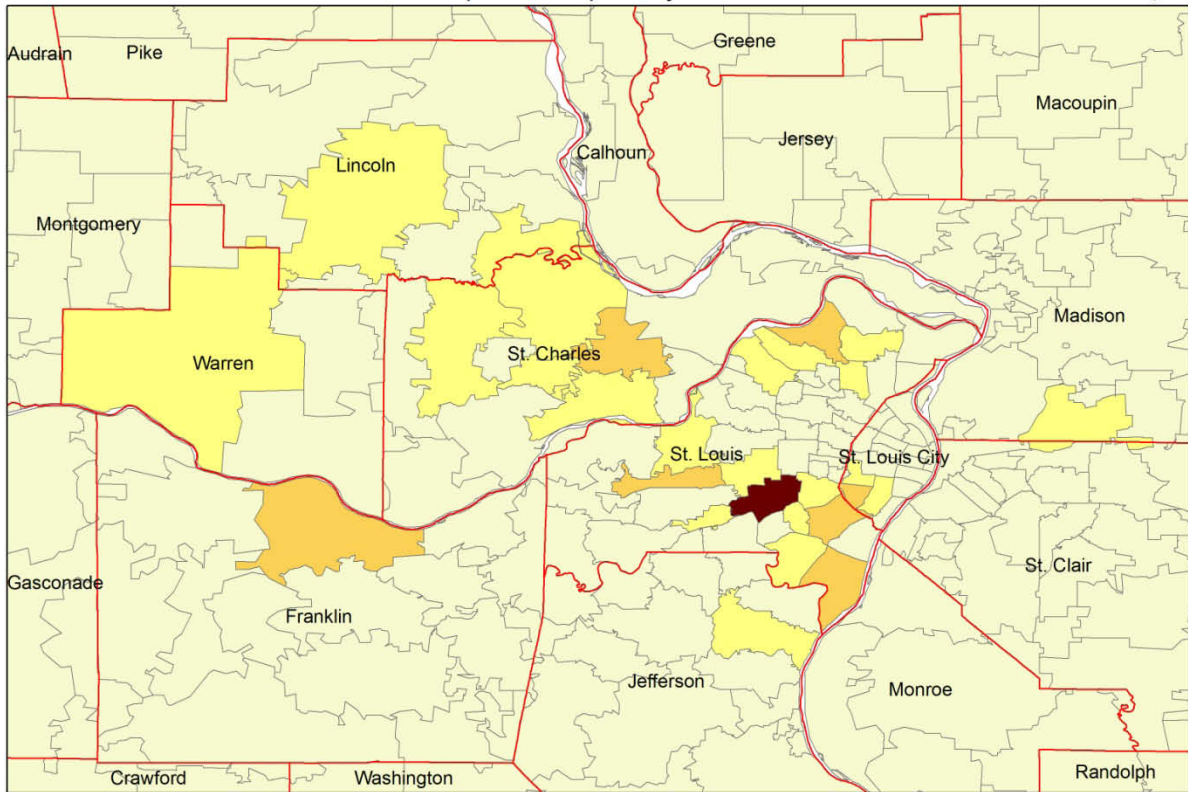
Color intensity represents more participants from a ZIP code.

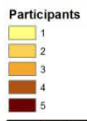
We may experiment with more meaningful ways of displaying these data, as most ZIP codes may only have one or two participants.



Project MoSHI Metropolitan Impact by ZIP Code

July 2010





Project MoSHI State Impact by ZIP Code

July 2010

