

Visit <http://experts.kumc.edu>

EXPERTS.KUMC.EDU is a Bibapp site. Learn more at <http://www.bibapp.org>

Connecting With Our Community: Using BibApp To Showcase Academic Health Center Faculty and Their Research

Presented by:

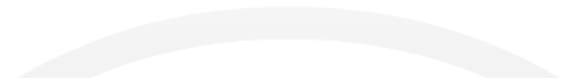
Rachel Gyore and Crystal Cameron-Vedros, Biomedical Librarians
A.R. Dykes Library, University of Kansas Medical Center

Our Co-Authors:

Jason Stirnaman, Biomedical Librarian

Bob Pisciotta, Associate Director

Karen Cole, Director



Objective

How can we promote scholarly publishing
and public access at KUMC?



Single collection point for research output

List of current publications

Highlight collaborations

Needs of research community

Self-identify by keyword/expertise

Feature scholarship beyond published literature

Develop pilot installation of BibApp

Demos across campus

How We Did It

Identify & meet with stakeholders

Recruit "champions" as pilot groups

Meet Our Experts

Search Library web site

[About](#) [FAQ](#) [Login](#)

Find [experts](#) on campus... Promote their [research](#)... Archive their work

Works [Groups](#) [People](#) [Publications](#) [Publishers](#)

[Advanced](#)

At Dykes Library, we ♥ our researchers.

People



Fabian



Smith



Dougherty



Tilzer



Sullivan



Grantham



Fontes



Al-Kasspoles



Andrews



Enders



Behbod



Neuberger



Jaeschke



Wan



Mayo

Works – Recent additions

Fine structural localization of Concanavalin A binding sites on hamster spermatozoa

Journal article

Kinsey, W. H., Koehler, J K

Journal of supramolecular structure (1976)

[Find It@KUMC](#) | [Save](#)

Cell surface changes associated with in vitro capacitation of hamster sperm

Journal article

Kinsey, W. H., Koehler, J K

Journal of ultrastructure research (1978)

[Find It@KUMC](#) | [Save](#)

The effect of the acrosome reaction on the respiratory activity and fertilizing capacity of echinoid sperm

Journal article

Kinsey, W. H., SeGall, G K, Lennarz, W J

Developmental biology (1979)

[Find It@KUMC](#) | [Save](#)

Meet Our Experts

Search Library web site

[About](#) [FAQ](#) [Login](#)

Find experts on campus... Promote their research... Archive their work

[Works](#) [Groups](#) **[People](#)** [Publications](#) [Publishers](#)

[Advanced](#)

Jeanne Drisko

Home [Works](#) [Groups](#)



Groups
University of Kansas Cancer Center
 Drug Discovery, Delivery & Development – Associate Member
School of Medicine
 Obstetrics and Gynecology – Clinical Professor
 Program in Integrative Medicine – Riordan Endowed Professor of Orthomolecular Medicine

[Email](#)

Research Focus

Integrative medicine; Nutritional medicine; Vitamin C; Ascorbic acid.

Works – recent additions

The use of antioxidants with first-line chemotherapy in two cases of ovarian cancer

Report

Drisko, Jeanne A, Chapman, Julia, Hunter, Verda J
Journal of the American College of Nutrition (2003)

[Find It@KUMC](#) | [Save](#)

Probiotics in health maintenance and disease prevention

Journal article

Drisko, Jeanne A, Giles, Cheryl K, Bischoff, Bette J
Alternative medicine review : a journal of clinical therapeutic (2003)

[Find It@KUMC](#) | [Save](#)

The use of antioxidant therapies during chemotherapy

Journal article

Drisko, Jeanne A, Chapman, Julia, Hunter, Verda J
Gynecologic oncology (2003)

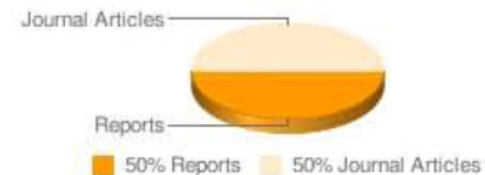
[Find It@KUMC](#) | [Save](#)

Co-authors at KUMC



Chapman

Types of Work



Popular research topics

Aged Antineoplastic Agents/administration & dosage/*therapeutic use Antineoplastic Combined Chemotherapy Protocols/*therapeutic use Antioxidants/*therapeutic use Antioxidants/administration & dosage/*therapeutic use Complementary Therapies/methods Fatal Outcome Middle Aged Neoplasms/*drug therapy Ovarian Neoplasms/*drug therapy

Meet Our Experts

Search Library web site

[About](#) [FAQ](#) [Login](#)

Find experts on campus... Promote their research... Archive their work

[Works](#) [Groups](#) [People](#) [Publications](#) [Publishers](#)

[Advanced](#)

82 Results for: diabetes

People



Stehno-Bittel



Smirnova



Ellerbeck



Lai



Abrahamson



Mahnken



Shankar



Hamera



Sousa



Abdulkarim

Groups

- School of Medicine (44)
- University of Kansas Cancer Center (42)
- Cancer Control & Population Health (18)
- Risk Factors for Carcinogenesis (16)
- Physical Therapy and Rehabilitation Science (14)
- Preventive Medicine and Public Health (14)
- School of Allied Health (14)
- School of Nursing (11)
- Anatomy and Cell Biology (10)
- Biostatistics (6)

Refine Results

Formats

- Journal article (74)
- Generic (6)
- Conference poster (1)
- Report (1)

Groups

Results (82)

Show: Sort by: Order: Send to:

« Previous 1 Next »

Reducing preventable medication safety events by recognizing renal risk.

Journal article

Fields, W, Tedeschi, C, Foltz, J, Myers, T, Heaney, K, more...

Clinical Nurse Specialist: The Journal for Advanced Nursing Practice (2008)

Find It@KUMC | Save

TYPES

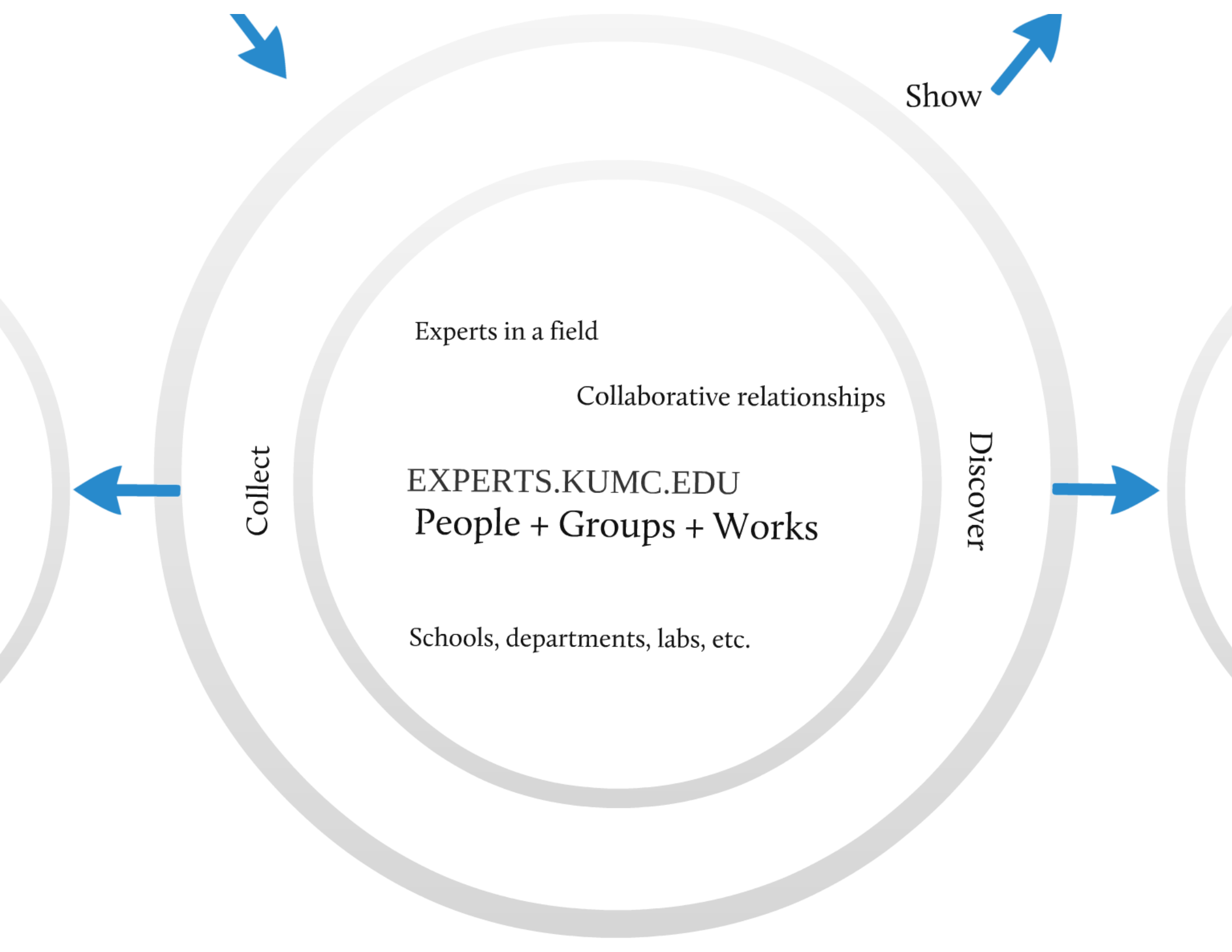
- Articles
- Presentations
- Grants
- Reports
- Book chapters

RESEARCH OUTPUT

SOURCES

- Pubmed.gov
- CINAHL
- Faculty
- A.R. Dykes Library







FindIt!@KUMC

FULL TEXT ACCESS

Archive your work

Institutional Repository

<http://archie.kumc.edu>

Meet Our Experts

Search Library web site

[About](#) [FAQ](#) [Login](#)

Find [experts](#) on campus... Promote their [research](#)... Archive their work

Works [Groups](#) [People](#) [Publications](#) [Publishers](#)

[Advanced](#)

Search Within

Refine Results

"2008"

Formats

Journal article (1)

Groups

Physical Therapy and
Rehabilitation Science (1)
School of Allied Health (1)

Irina V. Smirnova

[Home](#) **Works** [Groups](#)

Results (1)

Show: Sort by: Order: Send to:

A model-based time-reversal of left ventricular motion improves cardiac motion analysis using tagged MRI data

Journal article

Alrefae, Tareq, Smirnova, Irina V., Cook, Larry T., Bilgen, Mehmet
Biomedical engineering online (2008)

[Find It@KUMC](#) | [Save](#)

Find It!

[E-Journals](#) | [Databases](#) | [Dykes Library](#)



Citation

[Edit Citation](#)

Article Title: A model-based time-reversal of left ventricular motion improves cardiac motion analysis using tagged MRI data

Author: Alrefae, Tareq

Journal Title: Biomedical engineering online

ISSN: 1475-925X **Date:** 01/01/2008

Volume: 7 **Page:** 15

1. Get it Online

| Coverage Range | Links to content | Resource |
|----------------|---|---|
| 2002 - present | Article Journal | BioMedCentral |
| 2002 - present | Journal | Directory of Open Access Journals |
| 2002 - present | Article Journal | PubMed Central |
| 2002 - present | Journal | Archie Institutional Repository ← |

Upload files for those works - auto deposit into DSpace repository

Upload Content File

Attaching to Dissertation thesis:

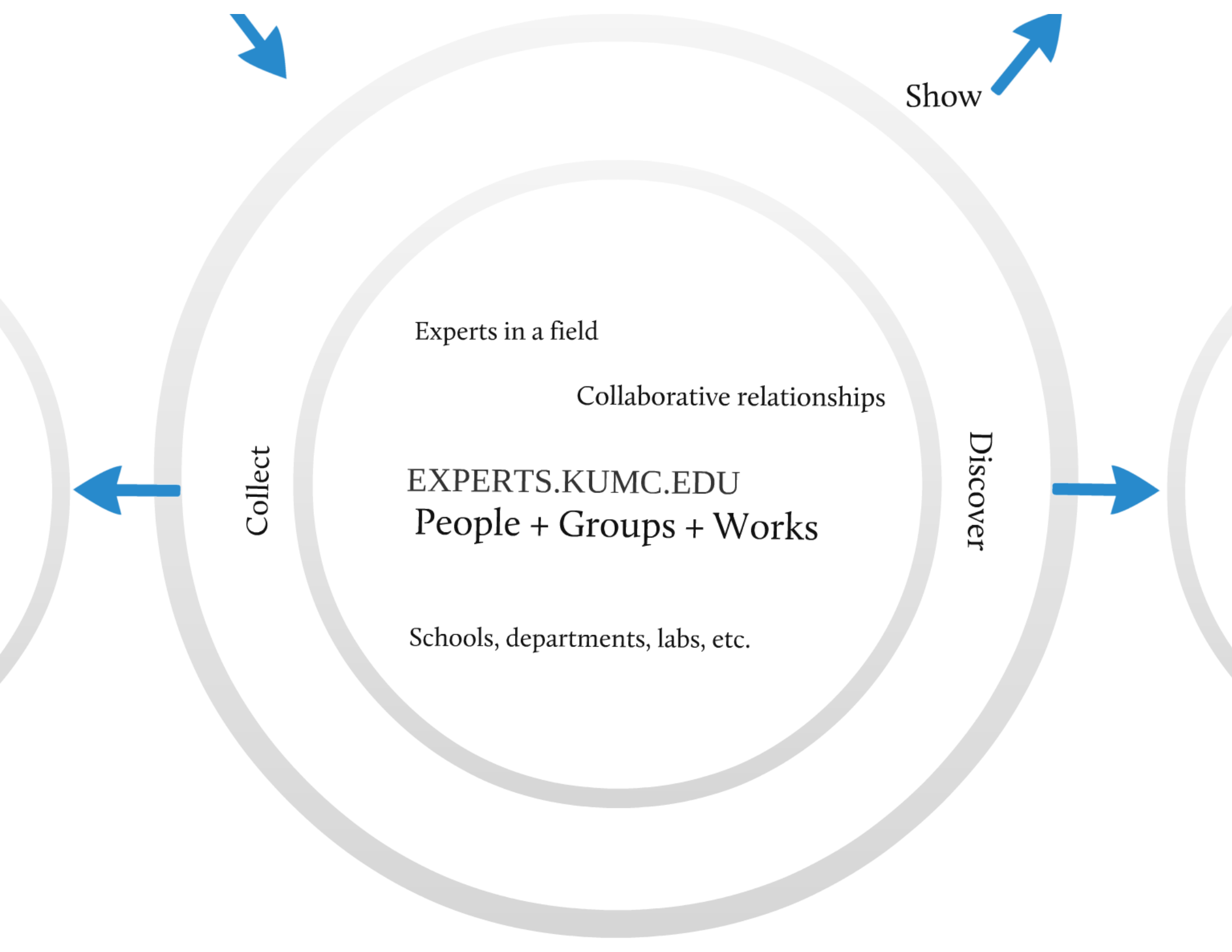
Baird, M.. (2009). Resettlement transition experiences among Sudanese refugee women.. . University of Arizona.

Content Files

Upload File(s): [\[Add More Files\]](#)

Browse...

Upload file(s)



Anatomy and Cell Biology

Overview

[Faculty](#)

[Graduate Program](#)

[Support Staff](#)

[Core Facilities](#)

[Current Trainees](#)

[Postdoctoral Fellows](#)

[Departmental Teaching](#)

[Seminar Series](#)

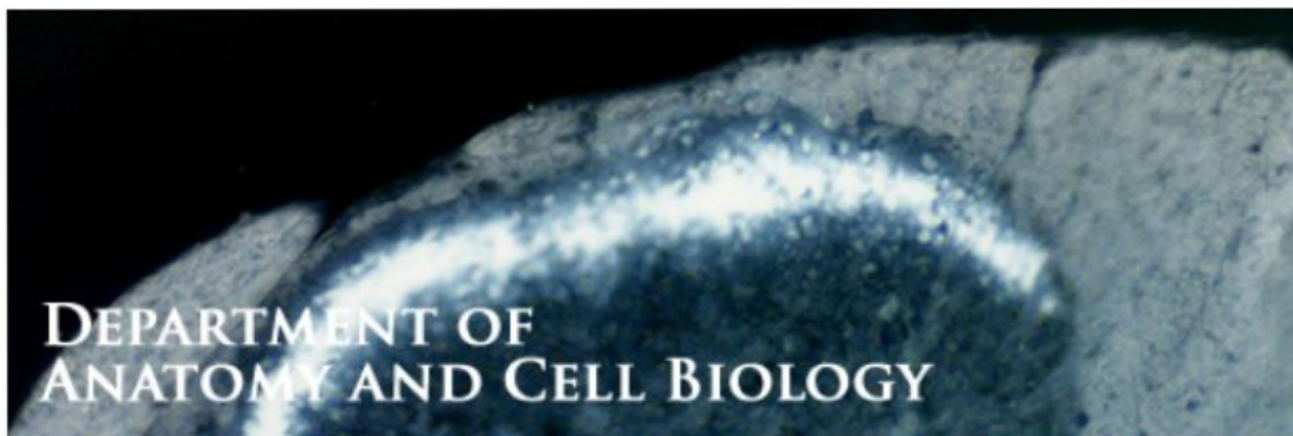
[Departmental Alumni](#)

[Willed Body Program](#)

[NIH Center of Biomedical Research Excellence \(COBRE\): Molecular Regulation of Cell Development and Differentiation](#)

Chair:
Dale R. Abrahamson, PhD

Graduate Studies Director:
Douglas E. Wright, PhD



The Department of Anatomy and Cell Biology is one of the basic science departments at the University of Kansas Medical Center. Our goals are to:

1. develop and sustain prominent research programs in cell and developmental biology;
2. provide an outstanding training environment for graduate students and postdoctoral scientists; and
3. deliver a superb educational experience for medical students.

As a measure of our success, our research laboratories are funded by numerous grants from the National Institutes of Health, the American Heart Association, the Cystic Fibrosis Foundation and other agencies; many of our trainees go on to positions at prestigious educational or commercial institutions; and our department has been recognized by first year medical students as



Recent Publications

Oestrogen increases nociception through ERK activation in the trigeminal ganglion: evidence for a peripheral mechanism of allodynia.

Development of kidney glomerular endothelial cells and their role in basement membrane assembly

Cellular origins of type IV collagen networks in developing glomeruli

Stem cell therapy for Alport syndrome: the hope beyond the hype

 [Subscribe to this Feed](#)



Robert M. Klein, PhD

Research Focus/Clinical Interests

Inflammation is a response to injury that allows the tissues and organs of the body to heal in an organized manner. That process of repair is orchestrated by small proteins, which function as intercellular signals, called cytokines. Cytokines may act in a beneficial way to augment cell survival and normal function or through detrimental mechanisms leading to programmed cell death (known as apoptosis). One class of cytokines is known as the chemokines. The name is derived from a contraction of chemoattractant and cytokine. Chemokines signal specific cells to migrate to the site of inflammation. In peripheral systems, the key cells that are attracted during inflammation are neutrophils and monocyte-derived macrophages. In the CNS, the response is almost entirely monocyte-derived with microglia, the macrophages of the brain, playing a critical role.

Recent Publications

All of these studies focus on microglia and cytokines/chemokines as well as their role in influencing normal neuronal function, differentiation, and aging.

[Oestrogen increases nociception through ERK activation in the trigeminal ganglion: evidence for a peripheral mechanism of allodynia.](#)

Journal article Liverman, C. S., Brown, J. W., Sandhir, R., Klein, R. M., McCarson, K., more... Cephalalgia : an international journal of headache (2009) The mitogen-activated protein kinase, extracellular signal-regulated kinase (ERK), is activated in experimental models of chronic pain, and is also activated by oestrogen. We used an established...

[Ghrelin is expressed in trigeminal neurons of female mice in phase with the estrous cycle.](#)

Journal article Puri, Veena, Chandrala, Syam, Puri, Sanjeev, Daniel, Carrie Gobar, Klein, Robert M., more... Neuropeptides (2006) Several disorders mediated by the trigeminal nerve including migraine and temporomandibular disorder (TMD) are more common in women than in men, and painful attacks are often linked to the menstrual cycle. Estrogen receptors...

[Altered expression of pro-inflammatory and developmental genes in the fetal brain in a mouse](#)

Additional Resources

[Presentations](#)

[Posters](#)

[Web sites](#)

[Department](#)
[Institute](#)
[Center](#)
[Lab](#)

Co-authors at KUMC

Robert M. Klein, PhD

Professor of Anatomy
and Cell Biology
Associate Dean,
Professional
Development and
Faculty Affairs
rklein@kumc.edu
Mailing address

Groups

GENERAL INFORMATION

- [About Us](#)
- [News from KUMC Leadership](#)
- [Maps & Directions](#)
- [Outreach Services](#)
- [Public Affairs](#)

EDUCATION

- [School of Allied Health](#)
- [School of Medicine](#)
- [School of Nursing](#)
- [Graduate Studies](#)
- [Continuing Education](#)
- [Residencies & Fellowships](#)

RESEARCH

- [Centers & Resources](#)
- [Researchers](#)

INFORMATION FOR

- [Alumni](#)
- [Faculty & Staff](#)
- [Students](#)
- [Patients](#)
- [Prospective Students](#)
- [Donors](#)
- [Prospective Employees](#)



1 2 3

Today Upcoming

Events for Wednesday, March 3, 2010

all day

Change Crusaders
8:00 AM - 9:00 AM

◆High-dose Ascorbate Enhances GemcitabineChemothe...
8:00 AM - 9:00 AM

Internal Medicine Grand Rounds: "Design
.....

FEATURED

- [Advocacy for Higher Education](#)
- [February 23 Faculty Council Presentation](#)
- [Budget Fact Sheet](#)
- [KUMC Budget and NCI Designation](#)
- [KU's University Budget News](#)
- [Time to Get it Right: Five-Year Update](#)

News

- [Checking In with Barbara Atkinson](#)
EVC newsletter - Feb 25, 2010
- [The Leukemia & Lymphoma Society and The University of Kansas Cancer Center Advance Novel Drug to Clinic in 13 Months](#)
- Feb 25, 2010
- [Doctors donate \\$200,000 for new KU Medical Center simulation center](#)
Lawrence Journal-World - Feb 23, 2010
- [KU researchers find maternal heredity link for Alzheimer's Disease](#)
- Feb 17, 2010
- [Learning an Instrument Could be Music for the Brain](#)
Fox 4 News - Feb 15, 2010

News Archive



September 2010

Oppor

Results/Conclusions

Inter

KUMC-wide implementation by September 2010

Collect research output -
integrate into existing web pages

Public access conversations are easier
(but more education is needed)

BibApp + Repository =



awareness

usage of OA and grey lit

Interest in KU-wide Meet Our Experts

Opportunity for library to redefine services

Upload your work to the repository

Contribute to the repository

Upload your work to the repository

Upload your work to the repository

BibApp + Repository =
+ research
+ image of UM and its
+ impact

Interest in KU-wide Meet Our Experts

Upload files for those works -
auto deposit into
DSpace repository

Upload Content File

Attaching to DSpace repository
From 10/2010, DSpace will auto deposit any files uploaded to the repository...
if they are:

Content File

Upload File:

Cancel

Results/Conclusions

Visit <http://experts.kumc.edu>

EXPERTS.KUMC.EDU is a Bibapp site. Learn more at <http://www.bibapp.org>