

*Honoring*  
**Ralph I. Canuteson, M.D.**



**K.P.H.A.**  
**SAMUEL J. CRUMBINE BANQUET**  
**April 12, 1956**  
**Topeka, Kansas**

## THE SAMUEL J. CRUMBINE MEDAL A KANSAS PUBLIC HEALTH ASSOCIATION AWARD

In 1946, Kansas' famous pioneer State Health Officer, Samuel J. Crumbine, M.D., was the honor guest at the annual banquet of the Kansas Public Health Association in Wichita. This visit to Kansas was a great joy to his friends and admirers in public health and was widely publicized by the Kansas press. Doctor Crumbine gained Nation-wide recognition as a result of his campaign to abolish the common drinking cup, and was the spearhead of the attack on two other disease carriers—the housefly and the common roller towel.

It is only fitting that the life and accomplishments of this pioneer in public health be memorialized by honoring, in his name, other workers who have contributed to the health and well-being of their fellow citizens. In 1952, the Samuel J. Crumbine Medal was created as a Kansas Public Health Association Award for meritorious service to public health, and at the banquet that year medals were presented to the current and all past honorees, including Doctor Crumbine who was present. Although candidates for the Award are considered every year, the Award is not necessarily made annually.

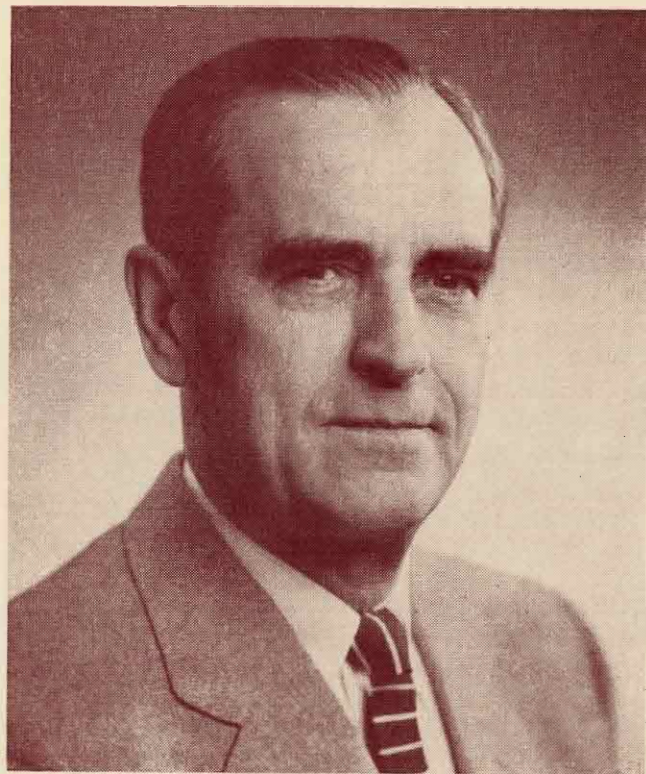
The list of past recipients follows:

- 1946—Samuel J. Crumbine, M.D.\*
- 1947—Clarence H. Kinnaman, M.D.
- 1948—Charles H. Lerrigo, M.D.\*
- 1951—Earnest Boyce, C.E.
- 1952—E. V. McCollum, Ph.D.
- 1954—Earle G. Brown, M.D.
- 1955—Karl A. Menninger, M.D. and  
William C. Menninger, M.D.

\*Deceased

### **HONORING DOCTOR CANUTESON**

In recognition of his outstanding contributions to public health, the Kansas Public Health Association has chosen Ralph Irving Canuteson, M.D., as 1956 recipient of the Samuel J. Crumbine Medal. A native of Wisconsin, Doctor Canuteson has earned this distinction in the field of public health through his many years as Director of Student Health at the University of Kansas, Lawrence, Kansas, and for his leadership and work in state and national voluntary health associations, especially those concerned with tuberculosis control. His friends and colleagues in the Kansas Public Health Association are proud to pay tribute to Doctor Canuteson.



RALPH I. CANUTESON, M.D.

## DOCTOR CANUTESON

### *Early Life*

Ralph Irving Canuteson, M.D., was born April 12, 1895, at Arcadia, Wisconsin, the son of Edward A. and Emma Parsons Canuteson. He graduated from high school at Galesville, Wisconsin. The advent of World War I interrupted his pre-medical education at McAllister College in St. Paul, Minnesota. Doctor Canuteson enlisted in the 32nd Infantry Division, Wisconsin National Guard in July of 1917. He was promoted to sergeant and served in France during World War I. While in France he attended officers candidate school and was commissioned a Second Lieutenant, Infantry and assigned to the 6th Division. He returned to the United States and was discharged in May of 1919.

He married Elsie Parker of Galesville, Wisconsin, May 27, 1920.

After receiving his A.B. degree from the University of Wisconsin in 1924, he attended the University of Minnesota, receiving a B.M. degree in 1926, and an M.D. degree in 1927.

From April 1927 until August 1928 he served as a staff physician of the health service at the University of Wisconsin. In September 1928, he was appointed Director of Student Health at the University of Kansas which position he still holds.

### *Work at the University of Kansas*

As Director of Student Health at the University of Kansas, Doctor Canuteson has been serving as Medical Adviser and Health Officer for the students on the campus. The emphasis of this service has been on the prevention of illness rather than the alleviation and healing of disease. In this position he has been a counselor and adviser to many young physicians and pre-medical students.

The Student Health office was originally located in a remodeled residence at 1406 Tennessee Avenue. After a few years in this location, Doctor Canuteson had demonstrated the value of a full-time director of Student Health and the need for more adequate facilities. In 1930, a Lawrence citizen, Mrs. Elizabeth M. Watkins, made a financial gift to the University to build and equip the present Watkins Memorial Hospital. Doctor Canuteson took a very active part in designing and supervising the construction of the building, which was primarily to provide clinics and out-patient service for students, and secondarily to provide hospital care. Doctor Canuteson convinced the University administrators of the importance of such measures as routine tuberculin tests and chest x-rays for all students, teachers, and others on the campus and of requiring thorough physical examinations of students before they are permitted to participate in intra-mural or intracollegiate athletics.

During the twenty-seven years of Dr. Canuteson's assignment as Director of Student Health at the University of Kansas, 45,922 new students have enrolled at the University. Dr. Canuteson has been responsible for these thousands of young individuals receiving a thorough indoctrination in the value of preventive medicine, including annual physical examinations to determine the possibility of potential pathology.

### ***National College Health Work***

Doctor Canuteson has taken a great interest in college health programs throughout the nation, holding the following positions in the American College Health Association: Secretary-Treasurer, 1940-1944; President, 1944-1947; member of the Governing Council since 1940. He served as chairman of major committees for the Second Conference on Health in Colleges in 1936, as chairman of the Third Conference in 1947, and chairman of a major committee for the Fourth Conference in 1954. In October, 1954, with a health educator from the National Tuberculosis Association, he participated in a special survey of the Student Health Services and Health Education Facilities at Dillard University, New Orleans, Louisiana. Doctor Canuteson also served as chairman of the editorial committee of the Health Programs for Colleges Report of the Third National Conference on Health and Colleges, sponsored by the National Tuberculosis Association in 1948.

### ***Leadership in Voluntary Health Associations***

In addition to his interest in school health, Doctor Canuteson has an impressive record of work with various state and national voluntary health associations. Many hours of his time have been devoted willingly and constructively to these groups. He has served as president of the Kansas Tuberculosis and Health Association from 1951 to the present. He has been a board member of this association since 1934. He has also been a member of the Board of Directors of the Na-

tional Tuberculosis Association since 1951, and in 1954, he served as president of the Mississippi Valley Trudeau Society. Since 1942, he has served as chairman of the Douglas County Chapter of the American Red Cross Blood Program and was president of the Kansas Heart Society in 1951.

### ***Other Activities***

In 1930 and 1948, Doctor Canuteson attended summer postgraduate sessions in internal medicine at Harvard University. He served as an instructor in hygiene at Stanford University during the summer quarters of 1937 and 1938.

His trips to Europe in 1939 and 1950, are indicative of his continuous interest in health problems both local and worldwide. During these trips he visited Pasteur Institute in Paris, attended meetings of the World Health Organization in Geneva, and the meeting of the International Union against Tuberculosis in Copenhagen. He also visited the Director of Tuberculosis Control, British Medical Service, in London, attended a meeting of the British Medical Association in Liverpool, visited the Secretary of Norwegian Health Insurance Plan in Oslo, and the Division of Tropical Medicine in Rome.

Doctor Canuteson's main hobby is Woodworking. He has personally built a cabin in the northern Minnesota woods, complete with carport, guest quarters, fireplace, and slide for his boat. He also owns a farm southwest of Lawrence, in which he takes a great deal of interest and pride.

### ***Memberships and Honors***

Doctor Canuteson is an Associate of Medicine in the University of Kansas School of Medicine, a Fellow of the American College of Preventive Medicine, and a Diplomat of the American Board of Preventive Medicine and Public Health. He was elected to Alpha Omega Alpha, Medical Fraternity in 1930; and Sigma Xi, honorary Science Fraternity in 1935.

### ***Author of Published Articles***

Doctor Canuteson's keen interest and ability, and the esteem in which he is held by his colleagues is evidenced by his published articles in professional journals, the titles of some of which follow:

*Comparison of Intermediate and Two-dose Tuberculin Tests*, Journal Lancet, April 1939.

*Health Service in the College Program*, Journal Lancet, November, 1947.

*Health Service Objectives*, Journal Lancet, December, 1945.

*Hypothyroidism, A Clinical Study*, with Robert A. Jordan, M.D., Journal Lancet, 1948.

*Infectious Mononucleosis*, Journal Kansas Medical Society, June, 1933.

*Looking Ahead in Health Service*, Journal Lancet, July, 1946.

*Pneumoconiosis, with Report of Cases*, Wisconsin Medical Journal, November, 1928.

*Student Health Services in Universities*, Journal Kansas Medical Society, August, 1930.

*Study of Physical Examination Records in Health Services*, Journal Lancet, August, 1939.

*The Possible Presence of a Reagin-like Factor in Normal Human Serum*, with N. P. Sherwood, M.D., and Glenn C. Bond, Ph.D., American Journal Syphilis, Gonorrhea and Venereal Disease, March, 1951.

*Tuberculosis Case-Finding in College*, Journal Kansas Medical Society, October, 1938.

*Wolff-Parkinson-White Syndrome*, with Robert A. Jordan, M.D., Journal Lancet, February, 1949.



—  
"Our youth will dwell in a land of health  
and fair sights and sounds." Plato.  
—

## KANSAS PUBLIC HEALTH ASSOCIATION

### 1955-1956 Executive Committee

\* \* \* \* \*

Dwight F. Metzler. . . . . President  
C. Henry Murphy, M.D. . . . . President-Elect  
Willard R. Bellinger, D.D.S. . . . . Vice-President  
Thomas R. Hood, M.D. . . . . Past President  
Evelyn Ford. . . . . Secretary-Treasurer

#### Members at Large:

Virginia Pence  
Edna Cheney, R.N.

#### Sectional Representatives:

Robert H. Riedel, M.D.  
Geraldine Newell, R.N.  
Samuel W. Hoover  
B. W. Tucker

\* \* \* \* \*

#### Crumbine Award Committee

Thomas R. Hood, M.D.	Lewis W. Andrews
Roberta E. Foote, R.N.	Vernon M. Winkle, M.D.
Homer F. Davis	James M. Mott, M.D.
	M. Leon Bauman, M.D.