

# **PRI** ANNUAL REPORT 2003

---

Letter from the Director  
About PRI  
Research Centers and Workgroups  
Research Infrastructure  
Staff, Affiliated Faculty, and Scholars  
Grant Activity  
Publications and Work Products

---

Dr. Steven Maynard-Moody, Director

Policy Research Institute  
The University of Kansas - Blake Hall  
1541 Lilac Lane, Rm. 607  
Lawrence, KS 66044-3177  
785-864-3701, E-mail: [pri@ku.edu](mailto:pri@ku.edu)

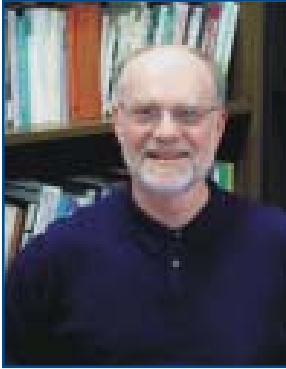
## Table of Contents

---

Letter from the Director .....	3
Letter from the Vice Provost for Research .....	4
About PRI .....	5
Organizational Structure (Figure) .....	5
Research Centers and Workgroups .....	6
Research Centers .....	6
Center for Economic and Business Analysis .....	6
Kansas Center for Community Economic Development .....	7
Center for Environmental Policy .....	8
Center for International and Political Analysis .....	9
Center for Metropolitan Studies .....	9
Research Workgroups .....	10
Health Disparities Workgroup .....	10
Law and Society Workgroup .....	10
Social Marketing Workgroup .....	11
Research Infrastructure .....	12
Computing and Data Library .....	12
Grant Support and Administration .....	13
Publications, Conferences, and Seminars .....	13
Survey Research Center .....	14
Staff, Affiliated Faculty, and Scholars .....	16
PRI Staff .....	16
PRI Affiliated Faculty .....	20
PRI Scholars .....	26
Grant Activity .....	29
Submitted Proposals .....	29
Funded Proposals .....	30
PRI Sponsored Projects: Awards & Expenditures, FY 2000-2003 (Figure) .....	32
2003 Publications and Work Products .....	33

## Letter from the Director

---



Founded in the Fall of 2000, the Policy Research Institute is a new research center. As director, I am often asked, “What is PRI?” or “What does PRI do?” In an era when agencies are advised to be “branded” and leaders are admonished to provide “clear vision,” I find these questions embarrassingly difficult to answer. The *2003 Annual Report*, our first, attempts to address these questions. I hope you can find a few moments to explore its pages.

Over the past three years, PRI has become a “commons” where researchers from across the university – from social science departments, but also the Schools of Law, Education, Social Welfare, Medicine, and Engineering – share ideas and collaborate in research teams.

As you look through our *Annual Report*, you will quickly see that these researchers pursue a wide-range of subjects. From analyzing police-stops to designing models to help predict genocide, from exploring the barriers to women and minorities in high-tech jobs to studying the roles of women in peace movements in Latin America, from examining how firms respond to environmental regulations to looking at international debt relief, PRI researchers undertake research of national and international importance.

Furthermore, PRI provides policy research and technical assistance to communities across Kansas. You’ll find us studying Kansas tax policy, providing benefit-cost analysis of local economic incentives, measuring the effects of social marketing campaigns, answering questions about community demographics and researching school finance measures, welfare reform, children’s health, rural health care, and transportation – the list is long.

What threads weave this diverse research together? Much of our research is not policy research in the narrow sense of contributing directly to the deliberations and actions of government and public agencies, although some of our work does so. Rather, PRI researchers share a common orientation towards research – we look out at the social world, whether it is local or global, and are drawn to social problems. We develop rigorous and probing research with a goal of deepening our understanding, and perhaps guiding the remediation, of these problems. Our work is theoretical but looks outward. It helps us see and understand social problems in new and deeper ways, and we believe that this understanding is the foundation of good policy.

Successful and creative research must be nurtured. PRI staff work closely with researchers to refine proposals, find the needed (and hard to get) resources to support their work, and then help manage the endless financial and contractual details of grant-funded research. During the research phase, our Survey Research Lab collects data while our Computing and Data Center finds and analyzes secondary data. When it’s time to share findings with the research community, PRI staff publishes reports and organizes e-journals, conferences, and seminars. As an extension of all that we do, the PRI web site has evolved into an important research tool as well as a repository of our many activities (<http://www.ku.edu/pri/>).

In the bottom-up world of university research, what PRI does is what PRI researchers and staff do. And, as you can see from this *Annual Report*, they do a great deal of important work.

Best Regards,

*Steven Maynard-Moody*

## Letter from the Vice Provost for Research

---



Dear Colleagues,

It is with great pleasure that I endorse this inaugural annual report from KU's Policy Research Institute. Within the covers of this report, director Steven Maynard-Moody and his excellent staff have compiled information that is both informative and interesting.

When the Policy Research Institute came into being with an expanded vision far beyond the old Institute for Public Policy and Business Research, few of us would have guessed the many innovative ways the organization would foster new research directions. Its expertise in the areas of public policy, metropolitan studies, and the economics of the state, region, and nation make PRI a vital link between the University, state and local governments, the business community, and the citizens of Kansas.

In the three-plus years since its inception, PRI has managed to involve many more faculty in its research purview. Those faculty receive excellent research assistance and have a supportive forum for interdisciplinary research within PRI. This support enables faculty to pursue coveted peer-reviewed research grants in areas ranging from the microcosm of an individual neighborhood to broad national issues and concerns. The Institute's public service mandate is also well served by its focus on economic development issues in the state of Kansas.

We in KU's Office of Research congratulate PRI on its numerous successes to date. I'm sure our many researchers in the social sciences and other areas join me in saying "Thank you for a job well done" to this fine organization.

Sincerely,

A handwritten signature in black ink that reads "James A. Roberts". The signature is written in a cursive style with a long horizontal line extending from the end of the name.

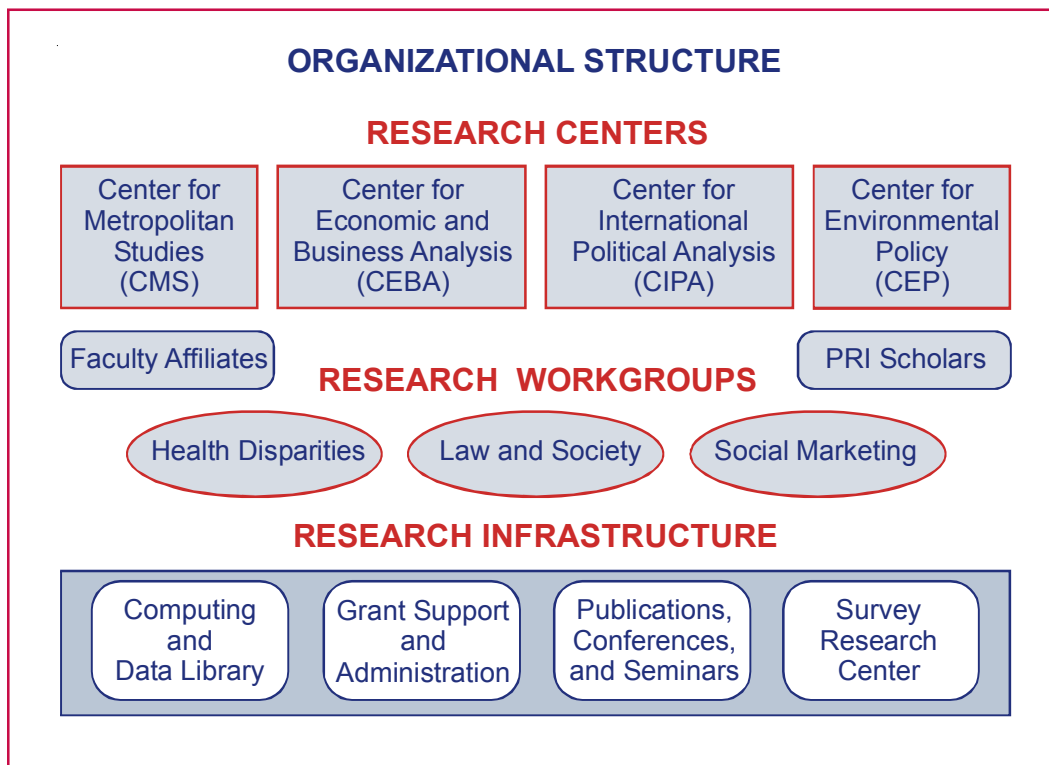
James A. Roberts  
Vice Provost for Research

## About PRI

The Policy Research Institute (PRI), formerly the Institute for Public Policy and Business Research (IPPBR), was created in 2000 by the University of Kansas Center for Research, Inc. to provide broad, university expertise in the areas of social, public policy, and economic research to the state, region, and nation. By attracting and encouraging the research of groups and individuals from a wide range of the University’s social science disciplines, PRI is becoming an intellectual center for social and policy research at the University of Kansas. To this end, PRI has the following goals: 1) to facilitate and support social science research in the areas of local, state, national, and international needs; 2) to broaden faculty involvement in the Institute’s research program; 3) to carry out research on economic development issues in Kansas and Kansas localities; and 4) to increase the portfolio of funded research.

In fulfilling these goals, PRI provides an active link between the University, state and local governments, the business community, and the citizens of Kansas.

The organizational structure of PRI is shown below.



As the organizational structure illustrates, the Research Infrastructure comprises the Institute’s foundation, or building blocks. Indeed, these four critical activities play a significant role in the success of PRI’s Research Centers, Workgroups, Scholars, and Faculty Affiliates.

## Research Centers and Workgroups

The Policy Research Institute (PRI) is a dynamic organization whose mission is to conduct “use-inspired basic social and policy research.” Attracting and encouraging the research of groups and individuals from a wide range of the University’s social science disciplines is our primary objective. PRI’s research centers, research workgroups, faculty affiliates and scholars work within an infrastructure of research support staff and services. This structure, which fosters flexibility and creative collaboration, allows the Institute to adapt and change based on faculty interest and development.

Centers were developed around major areas of research interest where multiple projects and disciplines are typically involved. Centers are likely to be stable over time. Workgroups are more fluid in nature, reflecting the current interests of researchers. Depending on the research focus of faculty and staff, the nature and composition of the workgroups may change – some workgroups may evolve into centers while others may no longer be relevant, making way for the evolution of new workgroups.

### RESEARCH CENTERS

PRI has four research centers: the **CENTER FOR ECONOMIC AND BUSINESS ANALYSIS (CEBA)**, the **CENTER FOR ENVIRONMENTAL POLICY (CEP)**, the **CENTER FOR INTERNATIONAL POLITICAL ANALYSIS (CIPA)**, and the **CENTER FOR METROPOLITAN STUDIES (CMS)**.



◆ **THE CENTER FOR ECONOMIC AND BUSINESS ANALYSIS** research focuses on state and local economic development, economic impact analysis, and tax research. Faculty affiliated with **CEBA** bring additional expertise to the Center including gender differences in employment, analysis of work and the performance of work, school finance and state aid allocation policies and practices, workforce training and community economic development, and international and developmental economics.

People:

**JOSHUA L. ROSENBLUM**, Director of **CEBA** and Professor of Economics

**RONALD A. ASH**, Professor of Business

**ELIZABETH ASIEDU**, Assistant Professor of Economics

**BRUCE D. BAKER**, Associate Professor of Teaching and Leadership

**DAVID BURRESS**, PRI Research Economist

**DONNA GINTHER**, Associate Professor of Economics and PRI Scholar

**GENNA HURD**, Co-Director of **KCCED** and PRI Research Assistant

**LUKE MIDDLETON**, PRI Research Assistant

**PATRICIA OSLUND**, PRI Research Economist

## Current Activities:

In 2003, the following grants, totalling over \$200,000, were awarded to CEBA staff and affiliated faculty:

“Business Taxes and Cost in Kansas and Nearby States, 2003 Update”

“Innovative Activity, and Opportunities and Capacity for Life Science- and Technology-Based Economic Growth in the Greater Kansas City Area”

“Special Bonds Evaluation”

“The Determinants of Foreign Direct Investment Policies (SGER)”

The City of Lawrence - multiple economic development grants and activities

CEBA director [JOSHUA L. ROSENBLOOM](#) organized the 2003 Kansas Economic Policy Conference, “Thirst for Growth: Water and Our Economic Future.” One-hundred-forty people from across the state attended, and, for the first time, the conference had a satellite link to attendees in the western part of the state, Ulysses, Kansas.

Professor [ROSENBLOOM](#) and [RONALD ASH](#), Professor of Business, continued work on an NSF grant, “Characteristics and Career Paths of Current IT Workers.” A 5-part seminar series, “Understanding the Pipeline: Differences by Race, Sex and Ethnicity in Education, Training, and Careers,” was conceived around the grant and was held during the spring semester.

[JOSHUA L. ROSENBLOOM](#), was awarded a \$128,000 grant, “Innovative Activity, and Opportunities and Capacity for Life Science- and Technology-Based Economic Growth in the Greater Kansas City Area” from KCCatalyst. Co-PIs on the grant were [DAVID BURRESS](#), PRI Research Economist and [SONIA MANZOOR](#), Assistant Professor, Economics. Through the development of an innovation index, this project examined the innovative activity and culture of the Greater Kansas City Area relative to peer metropolitan areas. The final report, *The Kansas City Economy: Performance, Innovation, and Resources for Future Economic Progress* will contribute to economic development strategies for the Kansas City metro area.

PRI continues to do important work for Kansas and its diverse communities. Functioning as a part of CEBA, and in collaboration with Kansas State University, the [KANSAS CENTER FOR COMMUNITY ECONOMIC DEVELOPMENT \(KCCED\)](#), which is funded by the U.S. Department of Commerce, is a national model for bringing strategic planning to struggling rural communities. Staff conduct research relating to rural community economic development, provide educational programs and training, and offer technical advice to these communities on a wide range of economic development matters. In the past year KCCED began work with the Standing Rock Sioux in North and South Dakota.

## People:

[GENNA HURD](#), Co-Director of KCCED and PRI Research Assistant

[CHARLES E. KRIDER](#), Project Director of KCCED and Professor of Business

[LUKE MIDDLETON](#), PRI Research Assistant

## Current Activities:

“Technical Assistance to the Standing Rock Sioux Reservation,” a grant from the U.S. Dept. of Commerce, Economic Development Administration, was awarded to KCCED staff, [CHARLES E. KRIDER](#) (PI), [GENNA HURD](#), and [LUKE MIDDLETON](#). This project involves assisting the Standing Rock Sioux in North and South Dakota with economic development activities.

The annual KCCED conference on community economic development, with approximately 200 participants from across Kansas, is the leading forum in the state for focusing on community economic development for rural areas.

“Year 15 Supplemental Grant for the 2003 KCCED Conference, and Kansas Center for Economic Development,” for \$90,000. Funding Agency: U.S. Department of Commerce-EDS.

Grants for Technical Assistance to various counties and local economic development agencies: Montgomery County Action Council, East Central Kansas Economic Opportunity Corporation, El Centro, Inc., Linn County, Washington County, Reno County, Bourbon County, and Harvey County.

PRI Technical Reports: Nos. 64-68, 70, 72, *Economic Trends Reports* for Douglas County, Baldwin City, Eudora, Lecompton, Lawrence, Linn County, Standing Rock Counties (ND, SD).

◆ **THE CENTER FOR ENVIRONMENTAL POLICY** examines various dimensions of environmental policy from an integrated perspective, engaging the social sciences, engineering studies, planning, and legal studies.

People:

**DIETRICH H. EARNHART**, Director of **CEP** and Associate Professor of Economics  
**KARL BROOKS**, Assistant Professor of Environmental Studies  
**JOHN CHRISTOPHER BROWN**, Assistant Professor of Geography  
**SORAYA CARDENAS VALLEJO**, Assistant Professor of Sociology  
**DOROTHY DALEY**, Assistant Professor of Political Science and Environmental Studies, and PRI Scholar.  
**LEISHA DEHART-DAVIS**, Assistant Professor of Public Administration  
**TATSUJI EBIHARA**, Assistant Professor of Civil and Environmental Engineering  
**ROBERT L. GLICKSMAN**, Distinguished Professor in the School of Law  
**DON HAIDER-MARKEL**, Associate Professor of Political Science  
**TRACY ELIZABETH MCMILLAN**, Assistant Professor of Urban Planning  
**SIDNEY SHAPIRO**, Dean for Research and John M. Rounds Professor of Law  
**VAL SMITH**, Associate Professor of Biology  
**STACEY SWEARINGEN WHITE**, Assistant Professor of Urban Planning  
**ANDREW WHITFORD**, Assistant Professor of Political Science and Environmental Studies

Current Activities:

**DOROTHY DALEY** received a grant, “Superfund Remediation and Public Participation: Do Community Advisory Groups Improve Public Satisfaction,” from the Environmental Protection Agency to study the influence of Community Advisory Groups and public participation on public satisfaction with EPA decision making in the Superfund program in Region 7 (Kansas, Missouri, Iowa, Nebraska).

**DIETRICH H. EARNHART**, PI, and Co-PIs **DON HAIDER-MARKEL**, **TATSUJI EBIHARA**, and **ROBERT L. GLICKSMAN** continued research on their \$341,230 Environmental Protection Agency (EPA) STAR Grant, “Shaping Corporate Environmental Behavior and Performance: The Impact of Enforcement and Non-Enforcement Tools.” The interdisciplinary research team is studying the factors that shape corporate environmental behavior and performance at individual facilities in the industrial sector of chemical and allied products. The goal is to determine the effects of various government interventions and community pressure on environmental decisions.



◆ **THE CENTER FOR INTERNATIONAL POLITICAL ANALYSIS** supports international research that is outside the boundaries of traditional centers or in areas of the world not covered by other university area studies programs. The Center received renewed funding from the National Science Foundation and the Swiss Peace Foundation in 2003.

People:

**PHILIP SCHRODT**, Co-Director of CIPA and Professor of Political Science

**DEBORAH J. "MISTY" GERNER**, Co-Director of CIPA and Professor of Political Science

**BRAD LEWIS**, Researcher, CIPA

Current Activities:

**PHILIP SCHRODT** (PI) and **DEBORAH J. GERNER** were awarded a grant, "Political Monitoring of Palestine," which allows them the opportunity to analyze the on-going conflict between Israelis and Palestinians. Using the *Kansas Event Data System (KEDS)*, CIPA records and studies political event data from around the world. This data is then used to predict political change. As part of their research on the Middle East, they continued their work on the NSF grant, "Analyzing the Dynamics of International Mediation Process," with **GERNER** as PI.

"Warning Methodology to Anticipate Genocide and Politicide (Genocide III)," was awarded by the Science Applications International Corporation, (**SCHRODT**). This project studies the effectiveness of computer modeling in predicting acts of violence.

◆ **THE CENTER FOR METROPOLITAN STUDIES**, a cooperative effort between the Department of Public Administration, the Edwards Campus, and the Policy Research Institute, provides policy research and analysis to greater Kansas City in the areas of education, health care, transportation, housing, law enforcement, and toxic waste.

People:

**THOMAS LONGORIA**, Director of CMS and Associate Professor of Public Administration

**H. GEORGE FREDERICKSON**, Distinguished Professor of Public Administration

**STEVEN MAYNARD-MOODY**, Director of PRI and Professor of Public Administration

Current Activities:

CMS staff applied for "Building Organizations and Building Community: Increasing Civic Participation of Latinos in Kansas," a grant from the Carnegie Foundation, and "The Suburbanization of Latinos in the Midwest," a grant from the U.S. Department of Housing and Urban Development. "Research Skills for Nonprofit Sector and Community Leaders" is a collaborative effort with CMS, Continuing Education, and community-based partners. The Center is working on a grant proposal, "Community Outreach Partnership Center (COPC)," to the U.S. Department of Housing and Urban Development.

As part of the Center's community outreach efforts, Director **THOMAS LONGORIA** made three presentations on issues of suburbanization of the Latino population. Two of these were: *Latinos in Kansas City: Demographic Changes and Implications for Governance* at the Cambio de Colores Conference, in Kansas City, MO; and *Latinos in Kansas: A Sociological and Political Profile* at the 32<sup>nd</sup> Annual State Convention of the League of United Latin American Citizens (LULAC), in Topeka, Kansas.

CMS is working closely with the Schools of Social Welfare and Education to strengthen KU's engagement in Kansas City, Kansas.

## RESEARCH WORKGROUPS

PRI currently has three workgroups: the **HEALTH DISPARITIES WORKGROUP**, the **LAW AND SOCIETY WORKGROUP**, and the **SOCIAL MARKETING WORKGROUP**. The workgroups may change over time depending on the research focus of scholars and faculty. Some workgroups may evolve into research centers.



- **THE HEALTH DISPARITIES WORKGROUP** focuses on differences in health status and access to quality health care based on gender, race-ethnicity, and social class.

People:

**SHIRLEY A. HILL**, Associate Professor of Sociology

**MARY K. ZIMMERMAN**, PRI Scholar and Professor of Sociology and Health Policy & Management in the School of Medicine at the KU Medical Center.

Current Activities:

In 2003 **MARY K. ZIMMERMAN** (PI) (with Robert Lee and Stephen Magnus – both at KUMC) and **PATRICIA OSLUND** received a \$100,000 grant, "Local Funding for Health Services in Rural Communities," from the Robert Wood Johnson Foundation. **ZIMMERMAN** submitted a proposal, "The Significance of Age in Breast Cancer Experience," to NIH for \$185,000. Professors **ZIMMERMAN** and **HILL** resubmitted a proposal to NIH, "Social Environmental Influences on Birth Outcomes."

- **THE LAW AND SOCIETY WORKGROUP** studies the role of law in the administrative and policy process.

People:

**CHARLES EPP**, Associate Professor of Public Administration

**DON HAIDER-MARKEL**, Associate Professor of Political Science

**STEVEN MAYNARD-MOODY**, PRI Director and Professor of Public Administration

Current Activities:

The **LAW AND SOCIETY WORKGROUP** has two major projects, both funded by the National Science Foundation.

"Administrative Legalization: Sources and Consequences in American Cities." **CHARLES EPP**, PI, is currently writing a book manuscript based on this research.

"Reconstructing Law on the Street: The Influence of Citizen Characteristics on Traffic Law Enforcement." **CHARLES EPP**, **STEVEN MAYNARD-MOODY**, and **DON HAIDER-MARKEL** comprise the research team and are currently examining the survey data on drivers' experiences about being stopped by the police.

- **THE SOCIAL MARKETING WORKGROUP** evaluates the effectiveness of policy makers' attempts to effect change and achieve policy goals through marketing campaigns.

People:

**STEVEN MAYNARD-MOODY**, PRI Director and Professor of Public Administration

**DON HAIDER-MARKEL**, Associate Professor of Political Science

**SUSAN MERCER**, Assistant Director, PRI

**ELAINE SHARP**, Professor of Political Science

**SURENDRA SINGH**, Professor in the School of Business

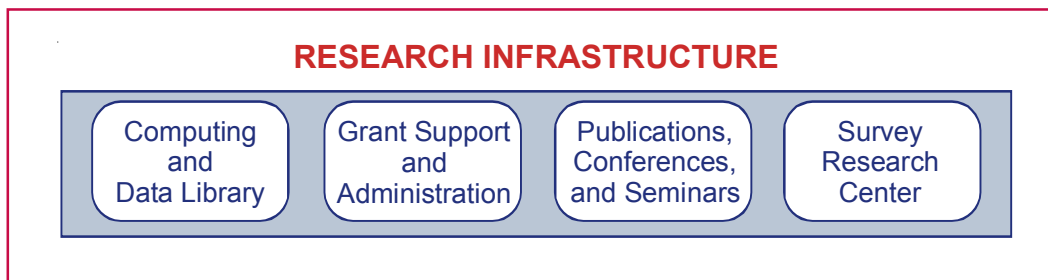
Current Activities:

**STEVEN MAYNARD-MOODY**, **DON HAIDER-MARKEL**, **MARK JOSLYN**, **SURENDRA SINGH**, and **SUSAN MERCER** are evaluating the impact of the "Kansas Children's Campaign," with a grant from the *Kansas Action for Children*.

## Research Infrastructure

PRI's Research Infrastructure includes the computing and data library; grant support and administration; publications, conferences and seminars; and the Survey Research Center. These four important activities provide the foundation for PRI's research activities.

PRI also provides research space for projects. During the past year, PRI reorganized its physical space on the 6th floor of Blake Hall to maximize available workspace for undergraduate and graduate research assistants who work on many different funded projects. The flexible design of the 18 workstations has fostered collaboration and teamwork.



- **COMPUTING AND DATA LIBRARY** - PRI computing staff designs and maintains the computing infrastructure of the Institute. This includes the local area network, the Institute's servers, and the workstations and software used by the research and office staff and the survey center.

The staff also develops and maintains an online collection of Census and other social and economic data. The Kansas Data Archive supports the *Kansas Statistical Abstract* and the services of the **KANSAS CENTER FOR COMMUNITY ECONOMIC DEVELOPMENT**. Online services include: the ability to create custom tables, graphs, and maps of Kansas city and county data; profiles of Kansas data for any aggregation of Census geography for 2000 Summary Files 1 and 3; population pyramids; legislator lookup by street address; and county and city profiles.

Within its role as a component of the Census State Data Center, PRI computing also offers custom data programming services to University staff and students, and the public.

People:

**LARRY HOYLE**, Director of **COMPUTING SERVICES**

**XANTHIPPE STEVENS**, Information Specialist

**THELMA HELYAR**, Librarian and Information Specialist

Current Activities:

The PRI computing staff developed and maintains: 1) the Kansas Data Page at <http://www.ku.edu/pri/ksdata/ksdata.shtml> which had over 36,000 hits in 2003; and 2) the "Political District Data" page at <http://www.ku.edu/pri/ksdata/vote/>, which is linked to the *Legislator Directory* from the *Kansas State Library Page*. This application had over 80,000 hits in 2003. Every legislator's home Web page links to one of PRI's custom Census Summary File 1 profiles as "District Demographics."

PRI computing staff did the majority of the testing of the SF4 Profile SAS code for the national cooperative effort. These summaries will be used in many states.

LARRY HOYLE developed and maintained code to produce tabulations for the Children's Client Status Reports for Office of Social Policy Analysis, KU School of Social Welfare.

HOYLE developed and co-taught LAS792, "Managing Research Data," beginning in 2002. XANTHIPPE STEVENS also helped develop and co-taught the Academic Computing Services workshop *GIS Special Topics: Taming TIGER- Census Geography Introduction*.

The Academic Data Research Services Alliance (ADRSA) is an alliance between the Digital Library, Academic Computing Services, and PRI to provide assistance in locating and analyzing data. STEVENS is on the steering committee and is the principal contact for data requests from PRI. The ADRSA web site can be found at: <http://www.ku.edu/adrsa/>.

- **GRANT SUPPORT AND ADMINISTRATION - GRANT SUPPORT AND ADMINISTRATION** is one of PRI's key strengths. PRI provides comprehensive support for grant activities to faculty and researchers through its grant support and administration unit. From funding searches, proposal development, and budgets to administration of the awarded project, PRI handles all the details.

NANCY CAYTON MYERS helps researchers find sources of funding for proposals and conducts funding searches tailored to specific areas of research interest. MYERS also assists with proposal writing and provides assistance with each step of the grant preparation process, including proofreading and editing, drafting of general information about the University of Kansas and PRI, obtaining letters of support, filling out forms, meeting grant guidelines, coordinating the approval process with the KU Center for Research (KUCR) proposal services office, and mailing proposals to agencies or uploading files into FastLane. With expertise in budget preparation, MYERS assists researchers with developing project budgets. CHARLOTTE TALLEY, administrative specialist, assists Myers with proposal development and preparation.

Once the Principal Investigator (PI) is notified that the proposal has been awarded funding, PRI continues to provide support to researchers by administering the grant. JUDY SCHRICK, Accountant, and TALLEY assist with purchasing and hiring, and manage project payroll. Shrick also manages all sponsored project financial accounts to ensure that agency guidelines are followed and helps keep PIs informed of their project's financial standing. She is an important link between the PI and KUCR, assisting with the management of all grants and contracts.

People:

NANCY CAYTON MYERS, Grant Development Coordinator

JUDY SCHRICK, Accountant

CHARLOTTE TALLEY, Administrative Specialist

Current Activities:

Grant support services prepares proposals for submission to Federal, state, local and private agencies for funding. It administers all grants awarded to PRI and to the faculty affiliated with PRI.

- **PUBLICATIONS, CONFERENCES, AND SEMINARS -** PRI provides an active link between the University, state and local governments, the business community, and the citizens of Kansas. Through publications, conferences, and seminars, PRI disseminates social, public policy, and economic research results, and projects developed in conjunction with its research.

## People:

**GENNA HURD**, Co-Director of KCCED

**LAURA KRIEGSTROM STULL**, Conference Coordinator and Graphic Designer

**CHARLOTTE TALLEY**, Administrative Specialist

## Publications:

*The Kansas Statistical Abstract 2002*, 37th Edition, published 2003.

PRI Research Report: *Ninth Assessment of the Science, Engineering and Math Infrastructure at Three Universities in Kansas*.

*Performance of the Economy, Lawrence/Douglas County, Kansas: 2002*.

*Lawrence/Douglas County Economic Indicators Report: First Quarter 2003*.

*The Economic Barometer: A Quarterly Economic Report, 2nd quarter, 2003* (Lawrence).

*The Kansas City Economy: Performance, Innovation, and Resources for Future Economic Progress*. Final report for the KCCatalyst grant (first draft).

## Conferences:

2003 Kansas Economic Policy Conference, *Thirst for Growth: Water and our Economic Future*. Annual Kansas policy conference, 140 attendees, with a first-time satellite link to attendees in Ulysses, Kansas, University of Kansas, Lawrence, KS.

15th Annual Kansas Center for Community Economic Development Conference, *Economic Development in Hard Times: Keeping Communities Strong* (co-sponsor). Annual community economic development conference, with 177 participants from Kansas and the region, Hutchinson, KS.

9th Annual Rural Policy Symposium, *Crafting Our Own Bootstraps: Making the Regional Approach Work* (co-sponsor), Kansas State University, Manhattan, KS.

## Seminars and Workshops:

Spring 2003 Seminar Series co-sponsored with The Hall Center for the Humanities, *Understanding the Pipeline: Differences by Race, Sex and Ethnicity in Education, Training, and Careers*. Five seminars at the University of Kansas, Lawrence, KS.

Kansas Space Grants Consortium (KSGC) performance and results workshop to help the KSGC prepare a 15-year review to NASA, Council Grove, KS.

United Tribes Technical College (UTTC) workshop on economic development planning and leadership, North Dakota.

- **SURVEY RESEARCH CENTER** - The Institute's **SURVEY RESEARCH CENTER (SRC)** offers local, state, national, and international survey capacity. Equipped with the latest integrated technologies, the Survey Research Center features a Computer Assisted Telephone Interviewing (CATI) system that allows survey research to be conducted accurately and efficiently.

The **SRC** has capabilities for in-house research, contract research, and assisting other university units with the following types of surveys: mail, computer assisted telephone interviews, focus groups interviews, and personal interviews.

A staff of professionally trained survey researchers provides assistance during all phases of a survey, from initial questionnaire development to the final report. The physical space was reorganized in 2003, making the modern facility even more efficient and spacious while increasing the call stations by three.

## People:

**DON HAIDER-MARKEL**, SRC Director and Associate Professor of Political Science

**MATTHEW KAUFMAN**, SRC Manager

#### Current Surveys:

East Central Kansas Economic Opportunity Corporation Client Survey: This grant included a mail survey to 1,700 clients of the East Central Kansas Economic Opportunity Corporation (ECKAN) to measure the use of services that ECKAN provides and to assess client's beliefs about the effectiveness of these programs. The survey was designed by a team of ECKAN and PRI members. Principal Investigator and Project Coordinator: [DON HAIDER-MARKEL](#).

Environmental Decision-Making and Public Perceptions Survey: the SRC compiled data from approximately 350 surveys mailed to individuals who took part in local environmental decision making. The survey studied the role that public participation plays in the decision process. Principal Investigator: [DOROTHY DALEY](#).

Environmental Protection Agency (EPA) Chemical Facility Survey: In 2002, the SRC began random CATI interviews with EPA wastewater-permitted chemical facilities nationwide. The EPA-sponsored survey was designed to determine and isolate the effects of various government interventions, including inspection, federal fines, federal injunctive relief and supplemental environmental projects (SEP), and state fines. A research team from economics, political science, law, and engineering management designed the survey. Study Director: [DON HAIDER-MARKEL](#); Principal Investigator: [DIETRICH EARNHART](#).

Kansas Children's Action Campaign Evaluation Survey: The SRC began approximately 600 CATI interviews with adult Kansans to assess how opinions and knowledge of policy issues affecting children in the state of Kansas are changing. The survey is the second in a three panel series. The results will be used to inform Kansas policymakers and community leaders of citizen opinion on a variety of issues. Principal Investigator: [STEVEN MAYNARD-MOODY](#)

Kansas City Driving Survey: Approximately 2,000 CATI interviews of adult drivers in the Kansas City metropolitan area will be completed by January 2004 with funding from the National Science Foundation. Respondents are being asked about driving habits and experiences. The survey is oversampling African-American drivers and is part of an NSF grant, "Administrative Legalization: Sources and Consequences in American Cities." Co-PIs: [CHARLES EPP](#), [DON HAIDER-MARKEL](#), and [STEVEN MAYNARD-MOODY](#).

Kansas City Health Survey: The SRC conducted approximately 400 CATI interviews of adult residents of the Kansas City Region to assess how and when people use various technologies to obtain health care information. The survey was a faculty grant funded by the University of Kansas Center for Research, Inc (KUCR). Principal Investigator: [DON HAIDER-MARKEL](#).

TANF Recipients Survey: SRC conducted CATI interviews with randomly selected TANF (Temporary Aid to Needy Families) Welfare recipients in Missouri. The study was part of a larger project conducted with TANF recipients nationwide. The survey assessed the experiences of TANF recipients and the impact TANF has on their lives. It involved researchers from the University of Kansas Medical Center and PRI. Project Coordinator: [PATRICIA OSLUND](#).

## Staff, Affiliated Faculty, and Scholars

---

### PRI STAFF

**STEVEN MAYNARD-MOODY** is Director of the Policy Research Institute and a Professor of Public Administration. In addition to his duties as director, Maynard-Moody maintains an active role on many research projects. He is also a liaison between the Institute and the University, the State of Kansas, potential clients, and the general public. His research interests include policy evaluation, administrative decision making, and organization behavior. **MAYNARD-MOODY** is a member of the **SOCIAL MARKETING** and the **LAW AND SOCIETY** Workgroups. In 2003, his most recent book, *Cops, Teachers, Counselors: Stories from the Front-Lines of Public Service* (with Michael Musheno, Ann Arbor: University of Michigan Press), was published. This is based on research funded by the National Science Foundation, "Justice in the Delivery of Government Services: Decision Norms of Street-Level Bureaucrats."

**SHARON ASHWORTH**, a Ph.D. candidate in the Department of Ecology and Evolutionary Biology, is a Research Assistant with the **CENTER FOR ENVIRONMENTAL POLICY** at PRI for the fall semester of 2003. Ms. Ashworth's primary research interests are associated with wetland ecology, restoration ecology, and plant community ecology. She uses wetland restorations as experiments for understanding vegetation dynamics as they relate to succession, resource use, and competition.

**DAVID BURRESS** is a member of PRI's **CENTER FOR ECONOMIC AND BUSINESS ANALYSIS**. As a Research Economist, he develops economic models of relationships between Kansas sectors, such as the Input-Output and Social Accounting Matrix models; and evaluates technology transfer programs using the ROPI (Return on Public Investment) system, which has been applied to the Kansas Technology Enterprise Corporation. He studies the effects of government policies and programs on the Kansas economy and the theory and practice of Cost-Benefit Analysis. He is also interested in transportation, telecommunications, business taxes, Internet access, workforce training, and multisectoral modeling.

**THELMA HELYAR**, PRI Information Manager, presides over the PRI Library and helps PRI maintain an active role as a component of the Kansas State Data Center. In fulfilling this role, she provides census and other data to PRI research staff, the university community, and the public. **HELYAR** is editor of the *Kansas Statistical Abstract*. Helyar retired in October 2003 after 27 years with PRI.

As Director of PRI **COMPUTER SERVICES**, **LARRY HOYLE** supervises a staff responsible for computing support for PRI staff and PRI's role as a Census State Data Center component. As a researcher, he is interested in the use of the World Wide Web for dynamic information delivery and visualization. **HOYLE**, along with Mickey Waxman of the Academic Computer Services Department, developed and teaches a course on data management using SAS and other tools that cover concepts of access, management, and storage of research data. **HOYLE** and **XANTHIPPE STEVENS** have developed a Web facility that allows anyone to aggregate a customized area from Census geography and generate a profile for that area. They have also implemented an online service that allows anyone to retrieve a list of legislators for any address in Kansas.

**GENNA HURD** is Co-Director of the **KANSAS CENTER FOR COMMUNITY ECONOMIC DEVELOPMENT (KCCED)**, which functions as a part of **CEBA** in collaboration with Kansas State University. As co-director, she fosters relationships with rural communities, coordinates



and leads regional and community workshops, organizes the annual [KCCED](#) conference, and assists with the management of the KCCED county-level database. She conducts research relating to rural community economic development and strategic planning and prepares reports related to the Center. She was CO-PI on the year-15 renewal grant from the Department of Commerce, EDA, to fund [KCCED](#). [HURD](#) also conducted four economic trend projects and two grant-funded surveys. She has been a researcher on the Kansas NSF Experimental Program to Stimulate Competitive Research (EPSCoR) program, and, in 2003, completed the program report, *Ninth Assessment of the Science, Engineering, and Mathematical Infrastructure at Kansas State University, The University of Kansas, and Wichita State University* (Kansas NSF EPSCoR).

[MATTHEW KAUFMAN](#), [SURVEY RESEARCH CENTER](#) Manager, has a Master's of Urban Planning from the University of Kansas and is currently working on a Master's of Political Science. As [SRC](#) manager, [KAUFMAN](#) assists in survey construction, data collection, and analysis for faculty grants and for a variety of public and private organizations. He also supervises student employees who work in the [SRC](#).

[HOLLY KREBS](#) is a Research Assistant with the [CENTER FOR ENVIRONMENTAL POLICY](#). Her research interests are housing, transportation, and related urban development issues. [KREBS](#) assisted [DOROTHY DALEY](#) in implementation of a survey for EPA-funded research regarding community participation in decisions about Superfund sites' clean-up. She also assisted the [SOCIAL MARKETING WORKGROUP](#) with implementing a survey for the Kansas Children's Campaign Evaluation.

[BRAD LEWIS](#), Research Assistant at PRI, is an Information Specialist with the [CENTER FOR INTERNATIONAL POLITICAL ANALYSIS](#). He completed his undergraduate degree in Political Science and History. He will be entering Law School in the Fall of 2004. He is interested in researching U. S. foreign policy, international law, and the interaction between sovereign states and International Inter-Governmental Organizations (IGOs).

[SUSAN MERCER](#), Assistant Director of PRI, manages PRI's operations including the Research Infrastructure as well as PRI's fiscal, human, and facilities resources. During the past year, she facilitated the reorganization of PRI's physical space on the 6<sup>th</sup> floor of Blake Hall as well as the remodel of the [SURVEY RESEARCH CENTER](#) in Frasier Hall. In addition, she is a member of the [SOCIAL MARKETING WORKGROUP](#) and coordinates the PRI Scholars program. [MERCER](#) is a research team member on several Institute projects and has expertise in focus group research. During 2003, Mercer conducted focus groups for Rosenbloom's research project: "Characteristics and Career Paths of Current IT Workers." She also developed focus group protocols for Sondra Beverly's "Banking on Family Child Care Evaluation Study" and Rosenbloom's "KCCatalyst: Tech Base of the KC Metro Area" projects for which she will be conducting focus groups in 2004.

[LUKE MIDDLETON](#), PRI Research Assistant, and member of the [CENTER FOR ECONOMIC AND BUSINESS ANALYSIS](#), conducts research primarily for the City of Lawrence, the Lawrence Chamber of Commerce, and Douglas County on the performance of the local economy. In this capacity, he produces quarterly economic indicator reports for the Chamber. He also produces economic indicator reports of the local and state economy. [MIDDLETON](#) analyzes tax abatement requests for the City of Lawrence and does quarterly ACCRA cost of living surveys. He also works with the [KANSAS CENTER FOR COMMUNITY ECONOMIC DEVELOPMENT](#). In 2003, he produced seven Economic Trends reports for various cities and counties and assisted with facilitation of strategic planning exercises for communities, including the Standing Rock Reservation (ND, SD). Along with [DAVID BURRESS](#) and [PATRICIA OSLUND](#), he worked on *Business Taxes and Costs: A Cross State Comparison, 2003 Update*.

As PRI GRANT DEVELOPMENT Coordinator, **NANCY CAYTON MYERS** assists research staff and PRI affiliated faculty with grant preparation and coordinates grant proposal submissions for PRI. **CAYTON MYERS** seeks funding opportunities, interprets funding guidelines, develops proposal budgets, and assists with other documents related to grant submissions. She also serves as a liaison between researchers and The University of Kansas Center for Research, Inc., which reviews and approves all grant proposals and contracts. **CAYTON MYERS** also seeks and maintains information on funding sources for policy-related research. In 2003, **CAYTON MYERS** helped secure NSF small grant funding for a project examining the determinants of foreign direct investments for Economics faculty. She also assisted PRI's Center for International Political Analysis in obtaining funds from the CIA for a project designed to help predict genocide/politicide in several middle-eastern and African countries. Other major awards in 2003 include \$130,000 in funds to study the life sciences and technology business environment in the greater Kansas City area, and \$117,000 in funds to evaluate the efforts of the Kansas Health Foundation to increase collaboration among agencies and systems that affect children's health.

**PATRICIA OSLUND**, PRI Research Economist, is a member of the **CENTER FOR ECONOMIC AND BUSINESS ANALYSIS**. Her current areas of research include state and local economic development, the role of science and technology in economic growth, state and local public finance, and welfare reform. Recently **OSLUND** co-authored the report *Business Taxes and Costs: A Cross-State Comparison*, funded by Kansas, Inc. In addition, she and other researchers from the KU Medical Center recently completed a survey of current and recent welfare recipients, funded by the Department of Health and Human Services and the State of Missouri.

**JUDY SCHRICK**, Accountant I, coordinates payments for PRI and for sponsored projects. She manages the Institute's payroll operations and appoints faculty, staff, and students to grants. She also prepares monthly financial reports for project principal investigators and prepares the Institute's monthly budget reports for the assistant director.

**XANTHIPPE STEVENS**, Information Specialist for the **DATA LIBRARY**, maintains the PRI Web site, maintains and updates the Kansas Data Archive, and provides research support to PRI staff and faculty. As part of the U.S. Census Bureau's State Data Center Network, she assisted in testing SAS code to generate Census 2000 Summary File 4 profiles. Expanding PRI's role in GIS activities across campus, she co-taught a workshop, *GIS II: Taming Tiger - An Introduction to Census Geography*, with Rhonda Houser of the KU Libraries. She was also invited as a guest lecturer to present Census data and geography for GEO358: Geographic Information Science. To assist the public during State redistricting, she created an application called "Find Your Legislator", that lists congressional, state senate, state house, and state board of education representatives for each county and allows users to enter their address to view their representatives.

**LAURA KRIEGSTROM STULL** is Coordinator for **PUBLICATIONS, CONFERENCES, AND SEMINARS**. As Conference Coordinator, she organizes PRI's seminars and conferences. She was coordinator of the 2003 Kansas Economic Policy Conference, "Thirst for Growth: Water and Our Economic Future," co-sponsored by League of Kansas Municipalities. She also coordinated a five-part seminar series sponsored by PRI and the Hall Center for the Humanities, University of Kansas. As graphic designer, she is responsible for designing and preparing printed material and PDF files, computer graphics, and displays. Some of her products include the annual *Kansas Statistical Abstract (KSA)* and the on-line *Kansas Policy Review*. She designed and produced the final report for a grant from KCCatalyst, *The Kansas City Economy: Performance, Innovation, and Resources for Future Economic Progress*.

**CHARLOTTE TALLEY**, Administrative Specialist, provides support for grant development, Center and Workgroup activities, assists with purchasing and payroll, and provides support for other Institute activities. **TALLEY** assists with event planning and presentation of PRI's conferences and seminars. She also organizes the monthly PRI Luncheon. As a member of the editorial team for the *Kansas Statistical Abstract*, she facilitates the collection and preparation of data for publication. Beginning in the fall of 2003, along with two students she supervises, **TALLEY** began a long term project to scan PRI Technical Reports and Monographs to electronic format for posting on the Institute's web site.

## PRI AFFILIATED FACULTY

One of PRI's primary objectives is to be a catalyst for individual and collaborative social science research. In 2003, PRI had more than 30 affiliated faculty members, including PRI Scholars, from 16 departments and programs across the University: public administration, political science, urban planning, geography, environmental studies, social welfare, communications studies, economics, education, engineering, sociology, business, law, Latin American studies, women's studies, and health policy and management at the KU Medical Center. This affiliation not only sparked numerous collaborations but also provided an important outlet for researchers to share ideas, gather feedback, and establish important connections.

**RONALD A. ASH** is a Professor in the School of Business and is affiliated with the **CENTER FOR ECONOMIC AND BUSINESS ANALYSIS**. His research interests center on the analysis of work, the performance of work, and human individual differences. Current research projects include: determinants of team leader emergence; personality determinants of compensation preferences and satisfaction with work; and characteristics and career paths of information technology workers. His areas of expertise include job and work analysis, personnel selection, personality assessment, performance appraisal and management, executive/managerial skills assessment and coaching, and research design and methodology. **ASH** and **JOSHUA ROSENBLUM**, Director of **CEBA**, continued work on their NSF grant, "Characteristics and Career Paths of Current IT Workers," which explores the reasons for the under-representation of women and some minority groups in the Information Technology (IT) workforce.

**MARY CHRISTINE BANWART** is Assistant Professor of Communication Studies. Professor Banwart's primary research focuses on political campaign communication—campaign advertising, news coverage, candidate Web sites, debates—as well as the influence of gender in politics, and on leadership. Her writings examine the strategic use of advertising in political campaigns, the gender gap, and news coverage in mixed-gender political races. Her current projects analyze the role of gender in political knowledge and cynicism, debate styles of political candidates, and candidate message development across multiple forms of mass media. **BANWART** was a co-recipient of the 2003 Central States Communication Association Federation Prize for research on analyzing gender in U.S. Senate, House, and gubernatorial debates.

**LORRAINE BAYARD DE VOLO**, Assistant Professor of Political Science and Women's Studies, is affiliated with the **CENTER FOR INTERNATIONAL POLITICAL ANALYSIS**. She is interested Latin American politics, social movements and women, and war and peace movements in Latin America. She was awarded a 2-year, NSF grant, "Women Waging War and Peace in Latin America," to study and fill existing gaps in the literature on gender and war by analyzing the mobilization of women in contemporary Latin America (Argentina, Colombia, Mexico, and Nicaragua). She also received a \$35,000 U.S. Institute for Peace grant, "Women's Nonviolent Actions in Latin America." In 2003 she worked on a new research project on comparative women's mobilizations in wartime in Nicaragua, Cuba, Colombia, Chiapas, Mexico, and Argentina. **BAYARD DE VOLO** was awarded the Silver Anniversary Award for distinguished teaching by the 25-year alumni class at the 2002-03 University of Kansas commencement ceremony.

**SONDRA BEVERLY**, Assistant Professor in the School of Social Welfare, has research interests in programs and policies related to welfare reform, asset accumulation, material hardship, and the use of financial services by low-income individuals. **BEVERLY** (PI), and PRI researchers **PATRICIA OSLUND** and **JOSHUA L. ROSENBLUM**, were awarded a four-year, \$117,000

grant to evaluate the effects of matched savings accounts and financial education for family childcare providers. "Banking on Family Child Care Evaluation Study" is sponsored by the Local Initiatives Support Corporation (LISC), Chicago. In 2003 she received the Outstanding Research Award from the Society for Social Work and Research for the article, "Material Hardship in the United States: Evidence from the Survey of Income and Program Participation," published in *Social Work Research*.

**KARL BROOKS**, Assistant Professor, holds a joint appointment in the History Department and the Environmental Studies Program. He is affiliated with PRI's [CENTER FOR ENVIRONMENTAL POLICY](#). He has researched hydroelectric law and policy in the postwar American Northwest, with implications for environmental quality, economic change, and regional development. His publications include *Unplugging the New Deal: Hells Canyon High Dam and the Postwar Northwest* (forthcoming), and *Wind in the Trees: The Emergence of American Environmental Law, 1945-1980*, (due 2004, University Press of Kansas). His research interests include politics and law of the environment, postwar social and cultural history, and history of environmental policy with special reference to wildlife, agriculture, and suburbs. He received his J.D. in 1983 and served three terms in the Idaho State Senate. **BROOKS** was a speaker at PRI's 2003 Kansas Economic Policy Conference, *Thirst for Growth: Water and Our Economic Future*.

**J. CHRISTOPHER BROWN** is Assistant Professor in the Geography Department and the Environmental Studies Program. **BROWN** is affiliated with the [CENTER FOR ENVIRONMENTAL POLICY](#). His research interests include political and ecological dynamics of rural development and conservation, biogeography, development institutions and policy, non-governmental organizations (NGOs), human-environment relations, and Latin America, Amazonia, and Brazil. His broad background in biology and Latin American studies contributes to his research of development in humid, tropical areas, especially the Brazilian Amazon. His current projects include the impact of internationally funded sustainable development projects on NGO activity in the state of Rondonia, Brazil; human and environmental dynamics of the expansion of soybean cultivation and other cropping in the Amazon; and measuring the impact of tropical deforestation on the presence and diversity of native bee species in the western Amazon.

**SORAYA CARDENAS VALLEJO** is Assistant Professor of Sociology and is affiliated with the [CENTER FOR ENVIRONMENTAL POLICY](#). **CARDENAS** specializes in environmental sociology with an emphasis on global water scarcity. She has done work in Queretaro, Mexico, on how government responds to Global water scarcity. Her key research area is qualitative research, and race and ethnicity.

**LEISHA DEHART-DAVIS** is Assistant Professor of Public Administration. She is a policy analyst and program evaluator, analyzing alternative options for addressing policy problems and evaluating the effectiveness of public programs. Her research interests include Internet citizen participation in environmental issues, environmental permit program evaluation, meta-analysis of environmental evaluations, environmental policy analysis and program evaluation. She is affiliated with PRI's [CENTER FOR ENVIRONMENTAL POLICY](#).

**TATSUJI EBIHARA** is Assistant Professor of Civil/Environmental/Architectural Engineering and is affiliated with PRI's [CENTER FOR ENVIRONMENTAL POLICY](#). His primary research interests are in the areas of biological waste treatment processes, stormwater pollution, and environmental management systems. His goal is to perform collaborative, multi-disciplinary research projects that promote the development of improved waste treatment processes and improved industrial operations that reduce the release of harmful substances to the environment.

**CHARLES EPP**, Associate Professor of Public Administration, is interested in judicial politics and policy, administrative law, political theory, civil liberties, and civil rights. **EPP** is a member of the **LAW AND SOCIETY WORKGROUP**. Along with **STEVEN MAYNARD-MOODY** and **DON HAIDER-MARKEL**, **EPP** is PI on an NSF grant to study racial profiling and examine the notion that policies adopted by legislatures, executives, and public bureaucracies are frequently revised through the discretionary actions of front-line public officials. The grant, "Reconstructing Law on the Street: The Influence of Citizen Characteristics on Traffic Law Enforcement" focuses on one group in particular, law-enforcement officers, by examining survey data and oversight policies. **EPP** is also PI on an NSF grant, "Administrative Legalization: Sources and Consequences in American Cities."

**H. GEORGE FREDERICKSON**, Edwin O. Stene Distinguished Professor of Public Administration, is in the **CENTER FOR METROPOLITAN STUDIES**. His research interests are bureaucracy and democracy, public administration ethics, and public policy; and his international work takes him frequently to the Far East. For the 2003-2004 academic year, **FREDERICKSON** has been appointed the John G. Winant visiting professor of American government by the department of politics and international relations at the University of Oxford in England. He has also been appointed as a visiting fellow at Balliol College of the University of Oxford for the same period.

**DEBORAH J. GERNER** is Co-Director of the **CENTER FOR INTERNATIONAL POLITICAL ANALYSIS** and Professor of Political Science. **GERNER'S** research interests are in the areas of U.S. and comparative foreign policy; the Arab-Israeli conflict and Palestinian nationalism; mediation, conflict resolution, and crisis early warning. **GERNER**, along with **PHILIP SCHRODT**, is currently working on two funded projects "Political Monitoring of Palestine," funded by the Swiss Peace Foundation, and "Analyzing the Dynamics of International Mediation Processes," funded by the National Science Foundation. Both projects use Kansas Event Data System (KEDS) software to code political events found in English-language news reports and use the data to monitor on-going conflicts and assess the effectiveness of mediation strategies. **GERNER** also received a Fulbright Scholarship for Lecturing and Faculty Development in International Studies at Birzeit University, West Bank. The research has been delayed due to suspension of the program by the U.S. State Department.

**ROBERT L. GLICKSMAN**, Distinguished Professor, School of Law and Courtesy Professor, Environmental Studies, is the Robert W. Wagstaff Professor of Law at the University of Kansas. **GLICKSMAN'S** research interests are in environmental law, including pollution control and public natural resources law. Current projects include issues relating to environmental law enforcement, issuance of back-end adjustments to laws controlling pollution, management of roadless areas in the national forests, environmental assessment under the National Environmental Policy Act, and standing to sue in federal court for violations of environmental laws. **GLICKSMAN** is part of a team that received a three-year grant from the EPA to study the effectiveness of various government interventions on corporate performance and compliance with water pollution legislation. He is affiliated with the **CENTER FOR ENVIRONMENTAL POLICY**.

**DON HAIDER-MARKEL** is Director of the **SURVEY RESEARCH CENTER** and Associate Professor of Political Science. He is also affiliated with the **LAW AND SOCIETY WORKGROUP** and the **SOCIAL MARKETING WORKGROUP**. His research and teaching is focused on public policy, public opinion, and political participation. He has authored and co-authored several articles, book chapters, and a book in a range of issue areas, including the environment, gay politics, gun control, abortion, hate crimes, and citizen militia groups. He has been recipient and co-recipient of grants from the EPA STAR program, the NSF, and the American

Psychological Foundation. As director of the [SURVEY RESEARCH CENTER](#), he oversees survey construction, data collection, and analysis for university faculty and a variety of public and private organizations; and also advises clients on public administration and public policy research.

[JOHN JAMES KENNEDY](#) is Assistant Professor of Political Science. His research interests include local governments and institutional change in developing countries, political development in China, and survey work in developing countries. [KENNEDY](#) is PI on "Local Democratic Elections within a Non-democracy: Village Election in the People's Republic of China," a grant proposal submitted to the American Philosophical Society and the KU Center for Research, Inc. These projects will serve as a foundation for an NSF CAREER proposal Kennedy will submit in 2004.

[JOANN KEYTON](#) is Professor of Communication Studies. Her research interests include sexual harassment, organizational culture, organizational team effectiveness, and relationship development across organizations. Professor Keyton was awarded a grant, "Evaluation of the Children's Health Systems Transformation," from the Kansas Health Foundation.

[CHARLES E. KRIDER](#) is Professor of Business and Project Director of the [KANSAS CENTER FOR COMMUNITY ECONOMIC DEVELOPMENT \(KCCED\)](#), which is part of the [CENTER FOR ECONOMIC AND BUSINESS ANALYSIS](#). As project director of [KCCED](#), [KRIDER](#) works with rural communities on local economic development strategies. [KRIDER'S](#) research interests are workforce training and development, determinants of employee satisfaction and retention, and state economic development strategies, particularly technology and workforce training. [KRIDER](#) (PI) and [GENNA HURD](#) (Co-PI) were awarded a grant, "Technical Assistance to the Standing Rock Sioux Reservation," by the U.S. Department of Commerce, Economic Development Administration. This project is part of [KCCED](#) and involves assisting the Standing Rock Sioux in North and South Dakota with economic development. [LUKE MIDDLETON](#), PRI Research Assistant, also worked on this grant.

[TRACY ELIZABETH MCMILLAN](#) is an Assistant Professor in the Graduate Program in Urban Planning and is affiliated with the [CENTER FOR ENVIRONMENTAL POLICY](#). Her research interests focus on quantifying the impact of transportation, land use and urban design on public health, community development and household quality of life, focusing particularly on non-motorized transportation modes and disadvantaged populations. Recent research includes the examination of factors that influence parental decision-making about a child's trip to school and the relationship of these factors to urban form, and an evaluation of the California Safe Routes to School program to determine the impact on children's travel behavior of changes to the built environment around schools.

[KEESHA MIDDLEMASS](#) is an Assistant Professor in Political Science. Her research interests are voting rights, representation, and Congress.

[JOSHUA L. ROSENBLOOM](#) is Director of the [CENTER FOR ECONOMIC AND BUSINESS ANALYSIS](#) and Professor of Economics. As director of [CEBA](#), [ROSENBLOOM](#) conducts research in cooperation with the Center's research economists, the [SURVEY RESEARCH CENTER](#), and members of the university and professional community. His current research interests include information technology workforce issues, regional economic development, and the historical development of labor markets in the United States. [ROSENBLOOM](#) and [RONALD ASH](#), Professor of Business, continued work on an NSF grant, "Characteristics and Career Paths of Current IT Workers," to explore the reasons for the under-representation of women and some minority groups in the Information Technology (IT) workforce. An offshoot of

this research was a Spring 2003 Seminar Series, cosponsored with the Hall Center, *Understanding the Pipeline: Differences by Race, Sex and Ethnicity in Education, Training, and Careers*. In addition, Rosenbloom (PI) was awarded a grant from KCCatalyst, "Innovative Activity, and Opportunities and Capacity for Life Science- and Technology-Based Economic Growth in the Greater Kansas City Area," which involved developing an index to examine the innovative activity and culture of the Greater Kansas City Area relative to peer metropolitan areas. Co-PIs were [DAVID BURRESS](#), PRI Research Economist, and [SONIA MANZOOR](#), Assistant Professor of Economics and member of [CEBA](#).

[PHILIP SCHRODT](#) is Co-Director of the [CENTER FOR INTERNATIONAL POLITICAL ANALYSIS](#), and Professor of Political Science. Professor [SCHRODT'S](#) major areas of research are international conflict, U.S. defense policy, and formal models of political behavior, with an emphasis on international politics, and political methodology. His current research projects focus on predicting political change using statistical methods. He is working with [DEBORAH J. GERNER](#) on projects funded by the National Science Foundation and the Swiss Peace Foundation, and also directs a project titled, "Testing Automated Coding for Warning of Genocide and Politicide," funded by the U.S. government's multi-agency State Failures Project. "Warning Methodology to Anticipate Genocide and Politicide (Genocide III)," was awarded to Schrodtt by the Science Applications International Corporation. The project is studying the effectiveness of computer modeling in predicting acts of violence.

[PAUL D. SCHUMAKER](#) is Professor and Chair of Political Science. His long-standing interest concerns democratic processes: the modes of participation that give people influence, and the conditions under which governments are responsive to citizens. He is also interested in political principles that influence people's preferences and activities on specific issues, particularly, the inter-relationships between people and their ethical principles – the conditions when "ethics matter most." He is currently working to develop models of the newer ideologies that are emerging at the beginning of the 21st century.

[SIDNEY SHAPIRO](#) is Dean for Research and the John M. Rounds Professor of Law in the School of Law and is affiliated with the [CENTER FOR ENVIRONMENTAL POLICY](#). [SHAPIRO'S](#) research interests include the philosophy of environmental protection, the choice of regulatory instruments, regulatory law and policy, regulatory enforcement, and process issues relating to rulemaking and permitting. He is the co-author of *Risk Regulation At Risk: Restoring a Pragmatic Approach* (Stanford Press 2003). He has served as a consultant to the Occupational Safety and Health Administration (OSHA), the Administrative Conference of the United States (ACUS), and the Office of Technology Assessment, United States Congress, and has testified before Congress on regulatory and administrative law issues.

[SURENDRA SINGH](#) is Southwestern Bell Chair in Marketing and Director of Research and Ph.D. Programs for the School of Business. His current research interests are in four areas: advertising, including subliminal advertising, processing of pictures in print ads, and promotional strategies of non-profit organizations; services marketing, including service quality judgments, and advertising by service professional; research burnout, including burnout measurement and interaction of research burnout and psychological burnout; and the World Wide Web, including comparison of the Web home pages with advertising, measuring perception of the Web home pages, and mere exposure effects in the banner advertising. Currently, he is doing research on incorporating user input in Web page and site design. [SINGH](#) is affiliated with the [SOCIAL MARKETING WORKGROUP](#).



**VAL H. SMITH** is Associate Professor of Biology and affiliated with the **CENTER FOR ENVIRONMENTAL POLICY**. His research focuses on the relationships between resource supplies and the structure and function of biological systems. His primary area of expertise is phytoplankton ecology, working extensively on the relationships between nutrient loading and the occurrence of bloom-forming blue-green algae in lakes and estuaries worldwide. He has extensive experience in the quantitative comparative analysis of aquatic and terrestrial ecosystems. His current interests include the mechanisms that maintain biodiversity in lakes and old fields and the ecology of invasions by non-indigenous organisms. **SMITH** was awarded a \$365,000 National Science Foundation grant for 2001-2005, "An Experimental Evaluation of the Roles of Local Ecological Processes and Species Pool Effects," to study plant diversity-productivity relationships. **SMITH** is a Co-PI with B. L. Foster.

## PRI SCHOLARS

PRI Scholars are affiliated faculty who receive extra support, such as summer salary, to work on grant proposals or to advance their research endeavors.

**ELIZABETH ASIEDU** is Assistant Professor of Economics and is affiliated with the [CENTER FOR ECONOMIC AND BUSINESS ANALYSIS](#). **ASIEDU** is interested in international and developmental economics. **ASIEDU** was awarded \$39,999 by NSF for her project, "The Determinants of Foreign Direct Investment Policies." Her article, "Debt Relief and Institutional Reform: A Focus on Heavily Indebted Poor Countries," was published in the *Quarterly Review of Economics and Finance*. In 2003 she was invited by the International Monetary Fund (IMF) to be a Visiting Scholar from February to March 2003, in Washington, D.C. She was also presented with the Outstanding Woman Educator Award by the University of Kansas.

**BRUCE D. BAKER** is Associate Professor of Teaching and Leadership in the School of Education. His research focuses on state aid allocation policies and practices, with particular attention to the equity and adequacy of aid for special student populations. He writes extensively on school finance and his research has been published in *The Journal of Education Finance* and *West's Education Law Reporter* and is used by states for school funding decision-making. He has served on a governor's task force on school finance in Kansas, and serves as a consultant to a state policy advisory board for the National Association for Gifted Children. In addition, he is involved extensively with technology applications in school finance for teaching, policy consulting, and research. Baker works with the [CENTER FOR ECONOMIC AND BUSINESS ANALYSIS](#).

**DOROTHY DALEY** is a PRI Scholar and Assistant Professor of Political Science and Environmental Studies. She is affiliated with the [CENTER FOR ENVIRONMENTAL POLICY](#). Her research focuses on decision-making and environmental policy – specifically, environmental politics and policy, hazardous waste remediation and community participation, collaborative environmental decision-making in voluntary environmental programs, environmental justice and public health, and corporate environmental behavior. She is continuing her grant to study the influence of community advisory groups and public participation on public satisfaction with EPA decision making in the Superfund program. The grant, "Superfund Remediation and Public Participation; Do Community Advisory Groups Improve Public Satisfaction," involves Region 7 (KS, MO, IA, NE). In 2003, **DALEY** received a fellowship through the Robert Wood Johnson Health and Society Scholars program at the University of Wisconsin, Madison to study the emerging field of population health.

**DIETRICH H. EARNHART**, a PRI Scholar and staff member, is Director of the [CENTER FOR ENVIRONMENTAL POLICY](#) and Associate Professor of Economics. He is interested in environmental economics, law and economics, comparative economics, and public economics. **EARNHART'S** research focuses on environmental economic issues that involve legal dimensions, such as optimal strategies for enforcing environmental protection laws, the effects of regulatory factors on corporate environmental performance, and the effects of ownership structure on environmental performance in transition economics. His research also examines the valuation of land-related and water-related environmental amenities.

**DONNA GINTHER**, Associate Professor of Economics and PRI Scholar, is affiliated with the [CENTER FOR ECONOMIC AND BUSINESS ANALYSIS](#). Her major fields of study are gender differences in salary and promotion in academia; economics of the family; and economic demography. She is a co-editor of *Technology, Growth and Labor Markets*, (Kluwer Press). She has been published in many journals including the *Journal of the American Statistical Association* and *The Review of Economics and Statistics*. She is currently working on a grant, "Do Social

Institutions Soften the Blow of Family Dissolution? A Cross-National Comparison of the Effect of Family Structure on Children's Socioeconomic Outcomes." The 2003-2004 grant is funded by the University of Kansas General Research Fund for \$7,600 (with Anders Björklund and Marianne Sundström). She was a research economist at the Federal Reserve Bank of Atlanta prior to coming to the University.

**SHIRLEY HILL**, PRI Scholar and member of the [HEALTH DISPARITIES WORKGROUP](#), is Associate Professor and Director of Graduate Studies in the Department of Sociology. **HILL'S** research interests are family caregiving for chronically ill members; inequalities in health status and health care based on gender, race, and class; gender and health policies; childhood socialization; and welfare and health care reform. She is the author of *African American Children: Socialization and Development in Families* (1999), and *Gender Dynamics Among African Americans* (forthcoming). In 2003, **HILL** and **MARY K. ZIMMERMAN** submitted a grant proposal, "Understanding Health Disparities in Birth Outcomes," to NIH (NICHD).

**THOMAS LONGORIA** is Director of the [CENTER FOR METROPOLITAN STUDIES](#) and Associate Professor of Public Administration. His research interests are urban and ethnic politics, public policy, and nonprofit administration. As director of the [CENTER FOR METROPOLITAN STUDIES](#) he leads a cooperative effort between the Department of Public Administration, the Edwards Campus, and PRI to provide policy research and analysis to greater Kansas City in the areas of education, health care, transportation, housing, law enforcement, and toxic waste. He is currently working on a Continuing Education Support Grant to bring research skills to community leaders and the nonprofit sector. He submitted a proposal, "The Suburbanization of Latinos in the Midwest," to the U.S. Department of Housing and Urban Development.

**ELAINE SHARP**, Professor of Political Science, is affiliated with PRI's [SOCIAL MARKETING WORKGROUP](#). Her research interests include local government policies with respect to regulation of sexually explicit businesses, gay rights, control of volatile protest activity, establishment of alternative policies on drug use, and casino development; state policy with respect to elderly drivers; and emergent new class/socio-cultural groupings and their implications for policymaking and economic development at the local level.

**STACEY SWEARINGEN WHITE** is Assistant Professor of Urban Planning in the School of Architecture and Urban Design. She is affiliated with the [CENTER FOR ENVIRONMENTAL POLICY](#). Her research interests include public participation in land-use and environmental planning. Areas of emphasis include: environmental policy implementation and innovation; social conflict over land use; public participation; and environmental planning pedagogy. She received a \$2,500 GRF Grant, "Understanding Environmental Planning Pedagogy." This research used results from a survey of environmental planning educators to predict learning expectations for various types of environmental planning knowledge. An article based on this research has been accepted for publication in the *Journal of Planning Education and Research*.

**CATHERINE WEAVER** is Assistant Professor of Political Science and is affiliated with the [CENTER FOR INTERNATIONAL POLITICAL ANALYSIS](#). **WEAVER** is the KU director for the Globe Futures Program, sponsored by the World Trade Center and International Relations Council of Kansas City. Her research interests are the behavior and change of international organizations, international political economy and globalization, foreign aid and the theory and practice of institutional change, and Russian economic reform. She is currently revising a book manuscript entitled, *The Rhetoric, Reality, and Reform of the World Bank*. She received two grants, a PRI Workshop grant and a KU New Faculty grant.

**ANDREW WHITFORD**, Assistant Professor of Political Science, and PRI Scholar, is affiliated with the **CENTER FOR ENVIRONMENTAL POLICY**. His research interests include American political institutions, executive politics, political economy, regulatory politics, and public policy (including environmental policy). He currently has research projects on the timing of Superfund prosecutions on environmental interest groups litigation strategies in the U.S. Supreme Court, and on alternative energy producers' access to the electricity grid. **WHITFORD** received an NSF grant, "Principal Agent Negotiations with Teams of Agents," to study how various economic incentives influence negotiations.

**O. FIONA YAP** is Assistant Professor of Political Science and is affiliated with the **CENTER FOR POLITICAL ANALYSIS**. She is interested in democratization, political economy, formal and informal institutions, and political bargaining in East Asia.

**MARY K. ZIMMERMAN** is Professor of Sociology and Health Policy and Management in the School of Medicine. She is a PRI Scholar and in the **HEALTH DISPARITIES WORKGROUP**. Her current research areas are long-term care, social inequality and adverse birth outcomes, and local spending for health care. Her recent publications appeared in the *International Journal of Health Services*, the *Journal of Ambulatory Care*, the *Journal of Poverty*, and the *Journal of Health Administration Education*. She was awarded a \$100,000 grant from the Robert Wood Johnson Foundation – "Local Funding for Health Care Services in Rural Counties" – to study local public funding for health care in rural areas and the impact of that funding on the viability of rural health care services. **ZIMMERMAN** and Rodney McAdams, a co-recipient, will be assisted by **PATRICIA OSLUND**, PRI Research Economist. She is Co-PI with **SHIRLEY HILL** (PI) on the grant submitted to NIH (NICHD).

## Grant Activity

---

### SUBMITTED PROPOSALS

"The Determinants of Foreign Direct Investment Policies (SGER)" was submitted to the National Science Foundation by **ELIZABETH ASIEDU** (PI), PRI affiliated faculty member in Economics.

Assistant Professor **LORRAINE BAYARD DE VOLO** applied for a Fulbright Scholarship for "New Century Scholars."

PRI Research Economist **DAVID BURRESS** submitted a grant proposal, "Business Taxes and Costs in Kansas City and Nearby States, 2003 Update." Funding agency: Kansas, Inc.

**LEISHA DEHART-DAVIS** (PI), Assistant Professor of Public Administration, and Co-PIs **DON HAIDER-MARKEL** and **ANDREW WHITFORD**, Political Science, submitted the grant proposal "Agricultural Pesticide Use and Non-Point Source Pollution: Evaluating Information Credibility, Risk, Perception and Practice." Funding Agency: EPA.

**DONNA GINTHER**, (PI), Associate Professor of Economics and member of **CEBA**, was PI on "Gender Differences in Employment Outcomes for Academics in Science and Social Science," a grant proposal submitted to NSF. She also submitted, "Assessing the Impacts of a Living Wage Ordinance in Lawrence, Kansas," to the Lawrence Chamber of Commerce."

PRI Survey Research Center Director, **DON HAIDER-MARKEL** (PI), submitted "ECKAN Client Survey and Data Entry" to the East Central Kansas Economic Opportunity Corporation.

Affiliated faculty members **SHIRLEY HILL** (PI), Associate Professor of Sociology, and **MARY ZIMMERMAN** (Co-PI), Professor of Sociology and Health, Policy and Management, submitted "Social and Environmental Influences on Birth Outcomes" to the National Institutes of Health-NICHHD.

**GENNA HURD** (Co-PI) and **CHARLES E. KRIDER** (PI) submitted two grants, "KCCED: Year 15 Supplemental Grant" for the 2003 KCCED Conference, and "Kansas Center for Economic Development, Year 16," through PRI. Funding Agency: U.S. Department of Commerce-Economic Development Administration.

**JOHN JAMES KENNEDY**, Assistant Professor of Political Science, is PI on "Local Democratic Elections within a Non-democracy: Village Election in the People's Republic of China," which was submitted to the American Philosophical Society and the KU Center for Research.

**JOANN KEYTON**, Professor of Communications Studies, was PI on a proposal, "Evaluation of Children's Health Systems Transformation," submitted to the Kansas Health Foundation.

**TOM LONGORIA**, Director of PRI's **CENTER FOR METROPOLITAN STUDIES** and Associate Professor of Public Administration, submitted a proposal, "The Suburbanization of Latinos in the Midwest," to the U.S. Department of Housing and Urban Development.

**PATRICIA OSLUND**, PRI Research Economist and PI, submitted a proposal “City of Lawrence/Lawrence Chamber of Commerce 2004,” to the Lawrence Chamber of Commerce and the City of Lawrence.

**JOSHUA L. ROSENBLOOM** (PI), Director of **CEBA**, submitted “Innovative Activity, and Opportunities and Capacity for Life Science- and Technology-Based Economic Growth in the Greater Kansas City Area.” Funding agency: KCCatalyst. **ROSENBLOOM**, Co-PI, and **TOM WEISS** (PI), Economics, submitted a grant proposal to NSF: “Estimation of Gross Domestic Product Before 1800: The Colonies and States of the Mid Atlantic Region.”

Two grant proposals, “Warning Methodology to Anticipate Genocide and Politicide” and “Addendum to State Failures Project” were submitted by **PHILIP SCHRODT**, Professor of Political Science and co-director of **CIPA**. Funding agency: CIA/SAIC.

“Ethics Matter: The Role of Ideals in Urban Policy Making” was submitted to the NSF by **PAUL SHUMAKER**, Professor of Political Science.

**ANDREW WHITFORD**, Assistant Professor of Political Science submitted two grant proposals: “Principal-Agent Negotiations with Teams of Agents” to NSF and “Sustainable Local Alternative Energy Development” to the Compton Foundation, Inc.

**FIONA YAP**, Assistant Professor of Political Science, submitted “Bargaining with the Military: Lessons from South Korea,” to the Smith Richardson Foundation. **YAP** also submitted “Bargaining with the Military: Lessons from South Korea and Taiwan” to the National Science Foundation, The Woodrow Wilson International Center for Scholars, the U.S. Institute for Peace, and the Chiang Ching-Kuo foundation for International Exchange.

## FUNDED PROPOSALS

“The Determinants of Foreign Direct Investment Policies,” a grant for \$39,999 from the National Science Foundation, was awarded to **ELIZABETH ASIEDU**, Assistant Professor of Economics and member of **CEBA**. Foreign Direct Investment (FDI) plays an increasingly prominent role in the world economy, especially in developing countries. Both incentive and restrictive investment policies by countries affect FDI flows. Yet, there is no empirical study on the determinants of FDI policy. This project will attempt to transform qualitative data on investment policies into quantifiable measures that can be used for empirical analysis.

**LORRAINE BAYARD DE VOLO**, Assistant Professor of Political Science and Women’s Studies, received a \$49,475 NSF grant, “Women’s Non-Violent Action in Latin America.” **BAYARD DE VOLO’S** research explores women’s non-violent organizing in Latin America, with a goal of better understanding the system of relationships between women’s collective action against war and military repression, their subsequent role in peace talks, and the stability of peace and depth of democracy that follows. The empirical focus is on Latin American wars of the last quarter century, documenting mobilized women’s contributions to peace efforts, innovative strategies to conflict resolution and successful methods of reconstructing war-torn communities. The research funded by the grant will contribute to a book already underway, *Waging War and Peace in Latin America*. Another Latin American/women and war project was funded for \$35,000 by the United States Institute for Peace.

**SANDY BEVERLY**, Assistant Professor in the School of Social Welfare (PI) and PRI researchers **PATRICIA OSLUND** and **JOSHUA L. ROSENBLOOM**, director of **CEBA**, continued work on a four-year, \$117,000 grant to evaluate the effects of matched savings accounts and financial

education for family childcare providers. “Banking on Family Child Care Evaluation Study” is sponsored by the Local Initiatives Support Corporation (LISC), Chicago.

**DAVID BURRESS**, PRI Research Economist and member of the [CENTER FOR ECONOMIC AND BUSINESS ANALYSIS](#), was awarded “Business Taxes and Costs in Kansas and Nearby States, 2003 Update.” The grant for \$39,602 was awarded by Kansas, Inc. **PATRICIA OSLUND**, PRI Research Economist, was Co-PI and **LUKE MIDDLETON** assisted. The report focused on business climate – the structure of state and local business taxes, tax incentives, and operational costs and their effects on economic development and the location of mobile corporations. This provided the state a way to assess its progress toward “competitiveness,” and to identify areas in which policy adjustments could improve the business environment.

**DAVID BURRESS** (PI) was awarded a grant for \$7,800 from the Kansas Department of Commerce & Housing to lead a consortium of economists from four Kansas Regents universities. The “STAR Bonds Evaluation Project” provided standards for the market impact studies that local governments must perform when applying for STAR Bond certification for major economic development projects.

**DONALD HAIDER-MARKEL**, Director of the [SURVEY RESEARCH CENTER](#) and Associate Professor, Political Science, was awarded the “ECKAN Client & Service Provider Survey.” **GENNA HURD**, PRI Research Assistant also worked on the project. The \$7,557 grant was awarded by the East Central Kansas Economic Opportunity Corporation to do a needs assessment survey of clients. Additionally, PRI will use data gathered from the surveys to develop a report on ECKAN’s needs. The clients are in an eight-county area: Anderson, Coffey, Douglas, Franklin, Johnson, Lyons, Miami, and Osage counties.

“Kansas City Health Information Survey,” a grant for \$7,727, was awarded to **DON HAIDER-MARKEL**, [SURVEY RESEARCH CENTER](#) Director, by the KU Center for Research, Inc.

“Evaluation of the Children’s Health Systems Transformation” was awarded to **JOANN KEYTON**, Professor of Communications Studies. The \$117,000, three-year grant from the Kansas Health Foundation was awarded to evaluate a consultant’s ability to increase collaboration among state agencies and systems that impact children’s health. Professor Keyton will create a descriptive and analytical system to evaluate both the process and product of the consultant’s work in establishing networks within Kansas government agencies and nonprofit agencies to enhance children’s health in Kansas.

**CHARLES KRIDER** (PI) and **GENNA HURD** (Co-PI) were awarded “Kansas Center for Community Economic Development, Year 16.” The \$90,000 grant renewal was awarded by the U.S. Department of Commerce for [KCCED](#) programs.

**PATRICIA OSLUND** was awarded a grant for Economic Development Research for the City of Lawrence and the Lawrence Chamber of Commerce for \$15,180.

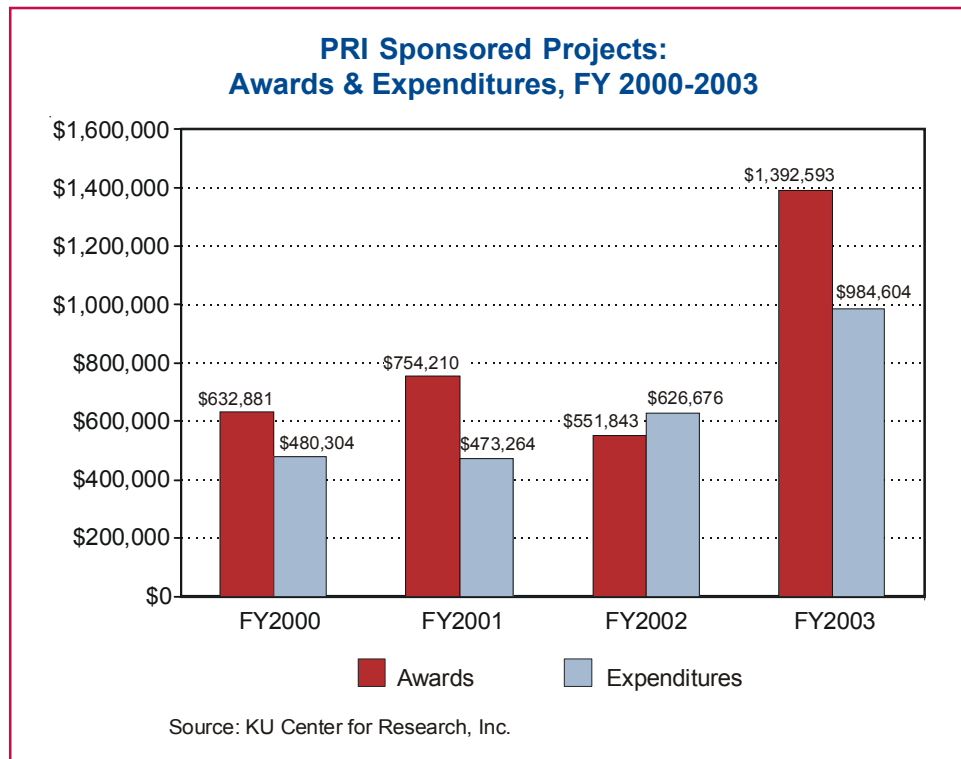
**JOSHUA L. ROSENBLUM**, Director of the [CENTER FOR ECONOMIC AND BUSINESS ANALYSIS](#) was awarded a \$128,746 grant, “Innovative Activity, and Opportunities and Capacity for Life Science- and Technology-Based Economic Growth in the Greater Kansas City Area,” from KCCatalyst. KCCatalyst, a nonprofit organization funded by the Ewing Marion Kauffman Foundation and the Missouri Department of Economic Development, strives to accelerate the formation and growth of life science and technology-based businesses and jobs in the greater Kansas City bi-state region. Co-PIs on the grant are **DAVID BURRESS**, PRI Research Economist and **SONIA MANZOOR**, Assistant Professor of Economics. The study consists of:

1) an assessment of the region's innovative record in comparison to a number of other benchmark communities; 2) an analysis of the industries with the greatest potential for regional economic growth; and 3) and an evaluation of regional capacity to attract and retain enterprises in these industries. The proposed work will contribute to economic development strategies for the Kansas City metro area.

**PHILIP SCHRODT** was awarded \$33,113 for his project, "Warning Methodology to Anticipate Genocide and Politicide (Genocide III)," awarded in 2002 by the Science Applications International Corporation.

**MARY ZIMMERMAN** and **PATRICIA OSLUND** received funding for "Local Funding for Health Services in Rural Communities" through a grant from the Robert Wood Johnson Foundation for \$100,000.

The Institute posted phenomenal growth in new grant awards for Fiscal Year 2003. PRI received 21 new awards totaling just under \$1.4 million during the period from July 1, 2002 through June 30, 2003, up 152 percent from FY 2002. Similarly, grant expenditures also climbed substantially during the same period to nearly \$1 million for a 57 percent increase over the previous fiscal year. The graph below illustrates PRI's growth in research activity by fiscal year.



FY 2003 marked a substantial increase in both sponsored project awards and expenditures. This is an exciting trend and a direct result of our aggressive efforts to identify, engage, and assist talented KU social scientists since 2000. By continuing to identify new researchers for the PRI Scholars program and keeping former and current faculty involved, this trend should continue.



## 2003 Publications and Work Products

---

### SHARON ASHWORTH

#### Journal Submissions:

"Using Joint Estimation of Multiple Regression Equations to Test Stability of Vegetation-Environment Relationships." Submitted to the journal *Ecological Applications*.

"Relative Contributions of Species Pool and Environmental Conditions to Plant Community Richness and Composition in a Series of Restored Wetlands." Submitted to *Wetlands*.

### RONALD A. ASH

#### Journal Article:

Guthrie, J. P., Ash, R. A., and Stevens, C. D. "Are women 'better' than Men? Personality Differences and Expatriate Selection." *Journal of Managerial Psychology* 18(3), 229-243.

### ELIZABETH ASIEDU

#### Journal Article:

"Debt Relief and Institutional Reform: A Focus on Heavily Indebted Poor Countries." *Quarterly Review of Economics and Finance* 43(4), 614-626.

#### Edited Volumes:

"Policy Reform and Foreign Direct Investment to Africa: Absolute Progress but Relative Decline," Saleh Nsouli (ed.), in *The New Economic Partnership for African Development: The Key Challenges*, International Monetary Fund, Washington, D.C. Paper was originally published in the journal *Development Policy Review* (forthcoming).

"Foreign Direct Investment, Wages, Employment and Regional Integration in Africa," Ann Harrison and Kee Kim (eds.), in *Multinationals and Employment at the Start of the 21<sup>st</sup> Century*, International Labor Office (ILO), Geneva (forthcoming).

"On the Determinants of Foreign Direct Investment to Developing Countries: Is Africa Different?" in Saleh Nsouli (ed.), in *The New Economic Partnership for African Development: The Key Challenges*, International Monetary Fund. Paper was originally published in the journal *World Development* (forthcoming).

"Women's Education, Labor Force Participation and Development in Africa," (with Donald Lien) Sylvain Boko, Mina Balamoune and Sitawa Kimuna (eds.), in *Globalization, Liberalization and the Role of Women in African Development*, African World Press/The Red Sea Press, Trenton, New Jersey (forthcoming).

### BRUCE D. BAKER

#### Journal Articles:

Baker, B. D., McIntire, J. "Evaluating State School Funding for Gifted Education Programs." *Roeper Review* 26(3), 173-179.

"The Influence of State Policies on the Internal Allocation of School District Resources: Evidence from the Common Core of Data." *Journal of Education Finance* 29(1), 1-24.

Baker, B. D., Friedman-Nimz, R.C. "Gifted Children, Vertical Equity and State School Finance Policies and Practices." *Journal of Education Finance* 28(4), 523-556.

Green, P. C., Baker, B. D. "Commentary: The Application of Section 1983 to School Finance Litigation." *West's Education Law Reporter* 173(3), 679-696.

Baker, B. D., Duncombe, W. D. "Balancing District Needs and Student Needs: The Role of Economies of Scale Adjustments and Pupil Need Weights in School Finance Formulas." *Journal of Education Finance* 29(2), 97-124.

## Reports:

Baker, B. D., Taylor, L., Vedlitz, A. "Measuring Educational Adequacy in Public Schools." Report to the Texas Select Joint Committee on Education Finance.

"Evaluation of the Suitability of the Kansas School District Finance Act." Expert Testimony in the Case of Montoy v. Kansas. Report commissioned by Husch and Eppenberger (Wichita), Somers, Robb and Robb (Newton) and Schools for Fair Funding, Inc.

"Favoring District Needs over Student Needs: The Adverse Effects of the Kansas School District Finance Act on Minority Children and Children with Disabilities." Expert Witness Testimony in the Case of Robinson v. Kansas. Report commissioned by Husch and Eppenberger (Wichita), Somers, Robb and Robb (Newton) and Schools for Fair Funding, Inc.

**LORRAINE BAYARD DE VOLO**

## Journal Articles:

"Analyzing Politics and Change in Women's Organizations: Nicaraguan Mothers' Voice and Identity." *International Feminist Journal of Politics* 5:1, 92-115.

## Presentations:

"Matriots and Madres Sufridas: Gendered Battles in Nicaragua's Revolution and Contra War." American Sociological Association, August, Atlanta, GA.

**SONDRA BEVERLY**

## Articles:

Hilgert, M. A., Hogarth, J.M., and Beverly, S. G. "Household Financial Management: The Connection Between Knowledge and Behavior. *Federal Reserve Bulletin* 89(7), 309-322.

Beverly, S. G., Moore, A., and Schreiner, M. A. "A Framework of Asset Accumulation Stages and Strategies." *Journal of Family and Economic Issues* 24(2), 143-156.

Sherraden, M., Schreiner, M., and Beverly, S. G. "Income, Institutions, and Saving Performance in Individual Development Accounts." *Economic Development Quarterly* 17(1), 95-112.

## Reports:

Beverly, S. G., and Dailey, C. "Using Tax Refunds to Promote Asset Building in Low-Income Households: Program and Policy Options" (Policy Report). St. Louis, MO: Washington University Center for Social Development.

**J. CHRISTOPHER BROWN**

## Journal Submissions:

Brown, J. Christopher and Mark Purcell. "There's Nothing Inherent about Scale: Political Ecology, the Local Trap, and the Politics of Development in the Brazilian Amazon." *Geoforum*.

Brown, J. Christopher, David S. Brown, and Scott Desposato. "Paving the Way to Political Change: Decentralization of Development in the Brazilian Amazon." Under review. *Political Geography*.

Brown, J. Christopher, Matthew Koeppe, Benjamin Coles, and Kevin Price. "Conversion of Tropical Forest to Soybean Production in the Amazon." Under review. *Ambio*.

Brown, David S., J. Christopher Brown, and Scott Desposato. "Bowling with NGOs: the Politics of Internationally Funded NGO Activity in the Brazilian Amazon." Under review. *British Journal of Political Science*.

**DAVID BURRESS**

## Report:

David Burress, Patricia Oslund, and Luke Middleton. "Business Taxes and Costs in Kansas and Nearby States: 2003 Update," University of Kansas, Policy Research Institute Report No. 271.

## Missouri TANF White Papers:

David Burress, Nancy Dunton, Jan Moore, Byron Gajewski, Donna Ginther, Patricia Oslund, and Joshua Rosenbloom. "Many Barriers Hinder Economic Outcomes" and "Barriers and the Time Limits"; "The Current Recession Will Likely Increase Missouri TANF Rolls."

"Recipients' Work Barriers Pose Risk to State's Ability to Meet Work Requirements."

**DOROTHY DALEY**

## Journal Submissions:

Daley, Dorothy M., James C. Garand, and Margaret Reams. "Liability Standards in State Superfund Programs: A Pooled Cross-Sectional, Time Series Analysis." Revise and resubmit at *Social Science Quarterly*.

Daley, Dorothy M. and David F. Layton. "Superfund Implementation and Environmental Progress: An Empirical Analysis of Remedial Progress." Revise and resubmit at *Policy Studies Journal*.

Daley, Dorothy M. "Superfund's Unintended Consequences: A Firm Level Analysis." Revise and resubmit at *Evaluation Review*.

Daley, Dorothy M. and James C. Garand. "Determinants of State Hazardous Waste Programs: A Pooled Cross-Sectional Time Series Analysis." Revise and resubmit at *American Politics Research*.

**DIETRICH H. EARNHART**

## Publications:

"Regulatory Factors Shaping Environmental Performance at Publicly-Owned Treatment Plants," *Journal of Environmental Economics and Management* (forthcoming).

"Panel Data Analysis of Regulatory Factors Shaping Environmental Performance," *Review of Economics and Statistics* (forthcoming).

"Liability for Past Environmental Contamination and Privatization," *Environmental and Resource Economics* (forthcoming).

"The Effects of Community Characteristics on Polluter Compliance Levels," *Land Economics* (forthcoming).

"The Value of Time: Combining Revealed and Stated Preference Data to Estimate Recreation Demand," *Environmental and Resource Economics* (forthcoming).

"The Countervailing Effects of Atrazine on Water Recreation: How Do Recreators Evaluate Them?" *Water Resources Research* v. 39, pg. 211-223, 2003 (with Val Smith).

"Do Travel Cost Models Value Transportation Properly?" *Transportation Research Part D: Transport and Environment* v. 8, pg. 397-414, 2003.

**DEBORAH J. GERNER**

## Books, Monographs:

Quaker Working Party (of which I was a member and author). *When the Rain Returns: Toward Justice and Reconciliation in Palestine and Israel*. Philadelphia: American Friends Service Committee (forthcoming, April 2004).

Gerner, Deborah J., and Jillian Schwedler, eds. 2004. *Understanding the Contemporary Middle East*, 2nd ed. Boulder: Lynne Rienner, Publishers (available in 2003).

## Articles and Chapters in Books:

Gerner, Deborah J., and Philip A. Schrodt. "Taking Your Academic Expertise Public: Lessons Learned Responding to the 11 September Crisis." [originally published in 2002 in *International Studies Perspectives* 3(2): 221-229] is being reprinted in *Contemporary Essays in Peace Studies in Honor of Anthony Bing*, ed. Caroline Higgins. Richmond, Indiana: Earlham College Press (forthcoming in 2004).

Gerner, Deborah J. 2003. "Middle East: The Palestinian Issue." In *Encyclopedia of Modern Ethnic Conflicts*, ed. Joseph Rudolph. Pp. 161-168. Westport, Conn.: Greenwood Press. Also reprinted as an appendix in *Until the Rain Returns*.

Schrodt, Philip A., and Deborah J. Gerner. "An Event Data Analysis of Third-Party Mediation in the Middle East and Balkans." *Journal of Conflict Resolution* (forthcoming in 2004).

Yilmaz, Omur, and Deborah J. Gerner. 2003. "U.S. and British Mediation Efforts during the 1974 Crisis over Cyprus." *Pew Case Studies in International Affairs*, Institute for the Study of Diplomacy, Georgetown University.

## Other Completed Publications or Research:

Gerner, Deborah J. 2003. "Chronology of Palestinian-Israeli Relations." Middle East Research and Information Project (MERIP). <http://www.merip.org>.

Gerner, Deborah J., Philip A. Schrodt, Ömür Yilmaz, and Rajaa Abu-Jabr. "The Creation of CAMEO (Conflict and Mediation Event Observations): An Event Data Framework for a Post Cold War World." - revise and resubmit at *Journal of Peace Research*.

Gerner, Deborah J. "Mobilization without Emancipation: Palestinian Women, State-Building, and the National Struggle," in *Women in the Global Community*, ed. Valentine Moghadam - book manuscript currently under review.

## Professional Research Presentations:

Gerner, Deborah J., and Ömür Yilmaz. "A Question of Sovereignty: Bahrain, Qatar, and the International Court of Justice." Presented at the annual meeting of the International Studies Association, Portland, Oregon, February 2003.

Schrodt, Philip A., Ömür Yilmaz, and Deborah J. Gerner. "Evaluating 'Ripeness' and 'Hurting Stalemate' in Mediated International Conflicts: An Event Data Study of the Middle East, Balkans, and West Africa." Presented at the annual meeting of the International Studies Association, Portland, Oregon, February 2003.

**DONNA GINTHER**

## Publications:

"Is MIT the Exception? Gender Pay Differentials in Academic Science 1973-1997." *Bulletin of Science, Technology, and Society* 23:1, 21-26.

"Gender Differences in Salary and Promotion for Faculty in the Humanities." *The Journal of Human Resources* 38:1, 34-73 (with Kathy J. Hayes).

"Women in Economics: Moving Up or Falling Off the Academic Career Ladder?" *Journal of Economic Perspectives* (forthcoming with Shulamit Kahn).

## Working Papers:

"Does the Beige Book Move Financial Markets?" Federal Reserve Bank of Atlanta Working Paper 2003-03. (with Madeline Zavodny). Under review at *The Southern Economic Journal*.

"Do Social Institutions Soften the Blow of Family Dissolution?." Mimeo, University of Kansas, (with Anders Björklund and Marianne Sundström).

"Does Family Structure Affect Children's Educational Outcomes?" National Bureau of Economic Research Working Paper 9628, April (with Robert Pollak). Under review at *Demography*.

"Work Activities as Firm-Specific Human Capital: Estimates of the Effects on Wages." Mimeo, University of Kansas (with Dylan Rassier).

Presentations:

"Do Social Institutions Soften the Blow of Family Dissolution?" Economic Demography Workshop at the Population Association of America, April 2003, and European Society for Population Economics Conference, June 2003.

"Women in Economics: Moving Up or Falling Off the Academic Career Ladder?" Southern Economic Association Conference, November 2003.

"Does Science Discriminate Against Women? Evidence from Academia, 1973-1997," Southern Economic Association Conference, November, and Stockholm University, September 2003.

**ROBERT L. GLICKSMAN**

Books:

*Risk Regulation At Risk: Restoring a Pragmatic Balance*, Stanford University Press, 2003, with S. Shapiro.

*Environmental Protection: Law and Policy*, 4th ed. Aspen Publishers, 2003, with D. Markell, D. Mandelker, D. Tarlock & F. Anderson.

Book Updates:

*Public Natural Resources Law*, Three volumes, Thomson/West Group, updated three times annually, with G. Coggins.

Book Chapter:

The CEC's Biodiversity Conservation Agenda in Greening NAFTA: The North American Commission for Environmental Cooperation, D. Markell & J. Knox, eds., 2003.

Presentations:

"Shaping Corporate Environmental Behavior: The Impact of Civil Enforcement," presentation at Albany Law School, Albany, N.Y., November 2003.

"Snowmobiles in Yellowstone: Motorized Recreational Vehicle Use on the Federal Lands," presentation at Forum on Personal Watercraft, Snowmobiles, and ATVs - Personal Use v. Environmental Impacts, Albany Law School, Albany, N.Y., November 2003.

"Recent Developments in Environmental Law: Legislative, Regulatory, and Judicial Highlights," speech at a CLE program on Recent Developments in the Law, in Lawrence, Kansas, June 2003.

"Citizen Suits Against the Federal Government," speech at conference on Environmental Citizen Suits at Thirtysomething: A Celebration & Summit, at Widener University School of Law in Wilmington, DE.

"Law School Casebooks as Teaching and Scholarship Tools," presentation to University of Kansas School of Law Legal Theory Workshop, in Lawrence, Kansas.

**DON HAIDER-MARKEL**

Referred Journal Articles:

Haider-Markel, Donald P., and Kenneth J. Meier. "Legislative Victory, Electoral Uncertainty: Explaining Outcomes in the Battles over Lesbian and Gay Civil Rights." *Review of Policy Research* 20(4):671-690.

Roh, Jongho, and Donald P. Haider-Markel. "All Politics is Not Local: National Forces in State Abortion Initiatives." *Social Science Quarterly* 84(1):15-31.

#### Publications:

Haider-Markel, Donald P. "The New Face of State and Local Government." In *Government in America: People, Politics, and Policy*, 11th ed. George C. Edwards, Martin P. Wattenberg, and Robert L. Lineberry, eds. New York: Addison, Wesley, Longman.

Haider-Markel, Donald P. "Clean Air Act." In *The Encyclopedia of Public Administration and Public Policy*, Ed. David Schultz. New York: Facts on File.

Haider-Markel, Donald P. "Gay Rights." In *Governing America: The Politics of a Divided Democracy*, ed. Robert Singh. New York: Oxford University Press (forthcoming).

Haider-Markel, Donald P. "Gay Rights Movement." In *World Book Encyclopedia*. Chicago: World Book Publishing.

Haider-Markel, Donald P. "Intergovernmental Relations." In *The Encyclopedia of Public Administration and Public Policy*, Ed. David Schultz. New York: Facts on File.

Haider-Markel, Donald P. "South Dakota v. Dole." In *The Encyclopedia of Public Administration and Public Policy*, Ed. David Schultz. New York: Facts on File.

#### Presentations:

"Issue Frames, Perception of Threat, and Support for Counter-Terrorism Policies." Co-author: Mark Joslyn. Presented at the annual meetings of the American Political Science Association.

"Shaping Corporate Environmental Behavior: The Impact of Enforcement and Non-Enforcement Tools." Presented at a University of California, Berkeley sponsored workshop, Corporate Environmental Performance and the Effectiveness of Government Interventions, Berkley, CA, June 2003.

"Political Representation or Backlash? The Positive and Negative Influence of Symbolic Representation in State Legislatures." Presented at the annual meetings of the Midwest Political Science Association, April 2003.

#### LARRY HOYLE

##### Web Site:

*Find Your Legislator*, PRI, (with Xanthippe Stevens). Allows Kansans to find their elected officials by county or user address. Includes demographic profiles for each district: <http://www.ku.edu/pri/ksdata/vote>. Each Kansas legislator homepage has a link to this site.

#### Reports:

Zebley, Linda; Hoyle, Larry; Barket, Alexander; Anderson, Gillian, "Children's Status Reports CMCH Reports FY04 Q1 July - September 2003." Office of Social Policy Analysis, Ronna Chamberlain, Director, School of Social Welfare, University of Kansas, December 2003.

Zebley, Linda; Hoyle, Larry; Barket, Alexander; Anderson, Gillian, "Children's Status Reports CMCH Reports FY03 Q4 April, May, June 2003." Office of Social Policy Analysis, Ronna Chamberlain, Director, School of Social Welfare, University of Kansas, August 2003.

Zebley, Linda; Hoyle, Larry; Barket, Alexander; Anderson, Gillian, "Children's Status Reports CMCH Reports FY03 Q3 January - March 2003." Office of Social Policy Analysis, Ronna Chamberlain, Director, School of Social Welfare, University of Kansas, May 2003.

Zebley, Linda; Hoyle, Larry; Barket, Alexander; Anderson, Gillian. "Children's Status Reports CMCH Reports FY03 Q2 October - December 2002. Office of Social Policy Analysis, Ronna Chamberlain, Director, School of Social Welfare, University of Kansas, February 2003.

**GENNA HURD**

## Reports:

*2002-2003 Annual Report for the Kansas Center for Community Economic Development*, a report required by EDA as part of KCCED's university center grant.

*Ninth Assessment of the Science, Engineering, and Mathematical Infrastructure at Kansas State University, The University of Kansas, and Wichita State University*, for Kansas NSF EPSCoR. PRI Research Report No. 269.

*Montgomery County Non-Resident Worker Survey, 2002*, PRI Technical Report No. 69.

*ECKAN Needs Assessment 2003: Survey of Clients*, PRI Technical Report No. 71.

*Economic Trends Report: Standing Rock Counties* (research for Standing Rock Sioux Reservation in North and South Dakota). PRI Technical Report No. 72.

**JOHN JAMES KENNEDY**

## Journal Articles:

Kennedy, John, Scott Rozelle and Shi Yaojiang. "Elected Leaders and Collective Land: Farmers Evaluation of Village Leaders Performance in Rural China" *Journal of Chinese Political Science* vol. 9, no. 1.

John James Kennedy and Scott Rozelle "Gender and Geography in Village Governance: Women Cadres and Village Committees in Fujian, China." Under submission to *Political Geography*.

**JOANN KEYTON**

## Book Chapter:

Observing Group Interaction. In R. Y. Hirokawa, R. Cathcart, L. Samovar, & L. Henman (Eds.), *"Small Group Communication: Theory and Practice,"* 8th ed., pp. 256-266. Belmont, CA: Wadsworth.

## Journal Article:

"Teaching a Pig to Sing?" *Management Communication Quarterly* 16, 453-458.

## Competitively Selected Presentations:

"Teaching about Communication Context When Context is Different." Russian Communication Association, National Communication Association, Miami.

Cissna, K. N., Scheibel, D., McMillan, J. J., and Keyton, J. "The Natural History of a Manuscript: Authoring, Reviewing, and Editing." Communication Theory Division, Southern States Communication Association, Birmingham.

Keyton, J., Anderson, K., Manning, J., Ozley, R. R., and Soliz, J. "Communication at the Crossroads: Investigating Structural Equation Modeling." Graduate Student Caucus, Central States Communication Association, Omaha.

Keyton, J., Messersmith, A., and Morris, T. "Case Pedagogy for Teaching Organizational Communication." Instructional Resources Interest Group, Central States Communication Association, Omaha.

Keyton, J., Russo, T. C., Ozley, R., and Pilgram, M. "Communication at the Crossroads: Organizational Communication from the Ground Up." Organizational and Professional Communication Interest Group, Central States Communication Association, Omaha.

Keyton, J., Beom, K., Fischer, C., Kennedy, P., Kidd, M. A., Richards, K. D., and Titus, S. "HP and Compaq: Merger Heaven or Hell." Organizational Communication Interest Group, Western States Communication Association, Salt Lake City.

**STEVEN MAYNARD-MOODY**

## Book:

*Cops, Teachers, Counselors: Stories from the Front Lines of Public Service*, Ann Arbor: University of Michigan Press, 2003. Book based on NSF-funded research on justice norms of street-level workers. With Michael Musheno.

## Presentation:

"Beyond Implementation: A Sketch of a Theory of Policy Enactment," at the Annual Research Conference of the Association for Public Policy Analysis and Management, Washington, D.C., November.

**SUSAN MERCER**

## Focus groups for the following grants:

KCCatalyst "Innovative Activity, and Opportunities and Capacity for Life Science" (Joshua L. Rosebloom, PI).

NSF "Characteristics and Career Paths of Current IT Workers" (Joshua L. Rosenbloom, PI).

## Reports:

*NSF Information Technology Workforce Focus Group Report*, March 2003.

**LUKE MIDDLETON**

## PRI Technical Reports:

*No. 64: Economic Trends Update: Douglas County*

*No. 65: Economic Trends Report: Baldwin City*

*No. 66: Economic Trends Report: Eudora*

*No. 67: Economic Trends Report: Lecompton*

*No. 68: Economic Trends Report: Lawrence*

*No. 70: Economic Trends Report: Linn County*

*No. 72: Economic Trends Report: Standing Rock Counties (ND, SD).*

## Reports for Lawrence Chamber of Commerce:

*Performance of the Economy, Lawrence/Douglas County, Kansas: 2002*

*Lawrence/Douglas County Economic Indicators Report: First Quarter 2003*

*The Economic Barometer: A Quarterly Economic Report, 2nd quarter 2003*

## Presentation:

Lawrence Chamber of Commerce Leadership Lawrence class, "Douglas County: An Economic Snapshot."

**NANCY CAYTON MYERS**

## Grants assistance, highlighting the following:

NSF small grant funding for a project examining the determinants of foreign direct investments for Economics faculty. Seed funding may lead to a larger grant from NSF in 2004.

PRI's Center for International Political Analysis in obtaining funds from the CIA for a project designed to help predict genocide/politicide in several Middle-Eastern and African countries.

\$130,000 in funds to study the life sciences and technology business environment in the greater Kansas City area.

\$117,000 in funds to evaluate the efforts of the Kansas Health Foundation to increase collaboration among agencies and systems that affect children's health.



**PATRICIA OSLUND**

## Report:

*Business Taxes and Costs: A Cross-State Comparison*, funded by Kansas, Inc. (co-author with David Burress and Luke Middleton).

*The Current Recession Will Likely Increase Missouri TANF Rolls*. (with David Burress, Nancy Dunton, Jan Moore, Byron Gajewski, Donna Ginther, and Joshua Rosenbloom).

## Survey:

*TANF Recipients Survey*. Survey of current and recent welfare recipients, funded by the Department of Health and Human Services and the State of Missouri. Project coordinator, with researchers from the KU Medical Center.

**JOSHUA L. ROSENBLOOM**

## Journal Articles:

"Conjectural Estimates of Economic Growth in the Lower South, 1720 to 1800," (with Thomas Weiss and Peter C. Mancall), "History Matters: Economic Growth, Technology, and Population, Essays in Honor of Paul A. David," Stanford, CA: Stanford University Press, 2004 (forthcoming).

"Workforce," *Encyclopedia of Human Computer Interaction*, with Brandon DuPont.

"Path Dependence and the Origins of Cotton Textile Manufacturing in New England," Forthcoming in David Jeremy and Douglas A. Farnie, eds., *The Cotton Industry in International Perspective*. Oxford: Oxford University Press.

## Reports:

*The Kansas City Economy: Performance, Innovation, and Resources for Future Economic Progress*. Final report for a grant from KCCatalyst.

## Reviews:

Perez, Carlota. "Technological Revolutions and Financial Capital: the Dynamics of Bubbles and Golden Ages," *Choice*, March.

## Presentation:

"Characteristics and Career Paths of IT Workers," at the NSF ITWF PI's conference in Albuquerque, NM. From research on a grant with Ron Ash, "Characteristics and Career Paths of IT Workers in the Kansas City Area." Developed an on line survey instrument for this same grant.

**PHILIP SCHRODT**

## Book Reviews:

Donald J. Puchala (ed). "Visions of International Relations." *Journal of Politics* 65:263-264, February.

## Presentations:

"Evaluating 'Ripeness' and 'Hurting Stalemate' in Mediated International Conflicts." International Studies Association, Portland, OR, February 2003 (with Deborah J. Gerner and Omur Yilmaz).

"Event Data Analysis: An Historical Overview" and "Early Warning in Academia: Research Studies." One-hour presentations at the Workshop for FAST Experts, Swiss Peace Foundation, Bern, Switzerland, March 2003.

"Current Challenges in Event Data Analysis." School of Engineering and Applied Science, George Washington University, April 2003.

"Workshop of Automated Content Analysis." One-hour workshop at the APSA Organized Section on Political Methodology Summer Meetings, July 2003.

"Data-driven Models for the Analysis of International Security in Central Asia." Workshop in Security in Central Asia: Methods and Models. MIT, September 2003.

"Power Laws, Self-Organized Criticality and Co-Adaptation in International Behavior." Workshop on Power Laws in the Social Sciences, Center for Social Complexity, George Mason University, October 2003.

#### SIDNEY SHAPIRO

Books:

*Risk Regulation At Risk: Restoring A Pragmatic Approach*, 2003, Stanford Press, with Robert Glicksman.

*Regulatory Law And Policy: Cases And Materials*, 3rd ed., 2003, LexisNexis, with Joseph Tomain.

Journal Articles:

"Administrative Procedure and the Decline of the Trial," *51 Kansas Law Review* 473, with Richard Levy.

"The Missing Perspective," *The Environmental Law Forum* March/April, with Robert Glicksman.

#### ELAINE SHARP

Journal Articles:

"Local Government and the Politics of Decency," *Social Science Quarterly*, June.

"Metropolitan Structure and the Sex Business," in *Metropolitan Governance: Conflict, Competition and Cooperation*, in Richard Feiock, ed., Georgetown University Press (in press).

Additional:

A book-length manuscript, titled *Morality Issues and Local Politics*, under review by the University Press of Kansas.

A data set on crashes by state and age group, licensing rates by state and age group, and licensing policies on elderly driver policies that will be presented in 2004 at the Midwest Political Science Association meetings.

#### PAUL D. SCHUMAKER

Book Chapter:

"Electoral College Reforms at the State Level: Choices and Tradeoffs," with Bruce Oppenheimer, forthcoming in *The State of Elections: From Florida to Reform*, edited by Robert Watson, University Press of Florida.

Publications:

"Dangerous Ideas: A Conceptual Framework for Anticipating Threats to Pluralist and Decent Societies." As an outgrowth work on ideologies (GIGS), this was solicited by CIA's Strategic Assessment Group (probable chapter in a book about ideologies in the 21st Century).

Presentation:

"Globalism and the False Ideological Consensus of the Post-Cold War Era," at Thammasatt University in Bangkok, Thailand.

**SURENDRA SINGH**

## Book Chapter:

Rosen, Dennis and Surendra Singh, "An Investigation of the Subliminal Embed Effect on Multiple Measures of Advertising Effectiveness," Reprinted in Robinson-Riegler, M.B., & Robinson-Riegler, G. L., Eds. *Readings in Cognitive Psychology: Applications, Connections, and Individual Differences*, Boston: Allyn & Bacon, 2004 (forthcoming).

## Presentation:

Lee, Sangoon, S. Mishra and S. N. Singh, "The Effect of Pleasant Ambient Scents on Services," EURO-TIMS 2003, Istanbul, Turkey.

**VAL SMITH**

## Publications:

Lennon, J. T., V. H. Smith, and A. R. Dzialowski. "Invasibility of Plankton Food Webs Along a Trophic State Gradient." *Oikos* 103:191-203.

Dzialowski, A. R., J. T. Lennon, W. J. O'Brien, and V. H. Smith. "Predator-induced Phenotypic Plasticity in the Exotic cladoceran *Daphnia lumholtzi*." *Freshwater Biology* 48:1593-1602.

Horner-Devine, C., M. Leibold, V. Smith, and B. Bohannon. "Bacterial Diversity Patterns Along a Gradient of Primary Productivity." *Ecology Letters* 6:1-10.

Wilson, B. A., V. H. Smith, F. deNoyelles, and C. K. Larive. "Ecological Impact Assessment of Three Pharmaceutical and Personal Care Product Chemicals Using Freshwater Algal Assemblages." *Environmental Science and Technology* 37:1713-1719. (For the associated technical review, see Schipper, O. *Environmental Science and Technology* 37:162A-164A).

Smith, V. H. 2003. Eutrophication of Freshwater and Marine Ecosystems: A Global Problem." *Environmental Science and Pollution Research* 10:126-139.

Havens, K. E., R. T. James, T. L. East, and V. H. Smith. "N:P Ratios, Light Limitation, and Cyanobacterial Dominance in a Subtropical Lake Impacted by Non-point Source Nutrient Pollution." *Environmental Pollution* 122:379-390.

**XANTHIPPE STEVENS**

## Surveys:

Developed the IT Workforce Survey in SAS as part of a research grant for Joshua L. Rosenbloom and Ronald A. Ash.

Stevens Geocoded traffic stops in the Kansas City Metropolitan area to ascertain the demographic information of the neighborhood where the stop occurred For the KC Metro Traffic Stops Project. Wrote a SAS program to perform a reverse search online and extract address information

## Custom Maps:

Stevens computer-generated custom maps appear in PRI's *The City of Lawrence Economic Trend Report* by Luke Middleton and in KCCED's county-level *Economic Trend Reports* for Montgomery County, Cloud County, Linn County, and the Standing Rock Sioux Reservation (ND, SD).

## Presentations:

One-on-one technology sessions to provide local economic development leaders with personal assistance in locating data online for their communities. Co-hosted three roundtable discussions with Luke Middleton on "Community Health Indicators-Where to Get the Data," which focused on free data available from PRI and KCCED. *15th Annual KCCED Economic Development Conference*, Hutchinson, KS, April 2003.

Workshop presentation on information on Census 2000 for the KU Libraries Government Documents Reference Training. It was structured to educate reference librarians on the history of the census program and the types and sources of census data.

Co-taught an Academic Computing Services workshop with Rhonda Houser, GISII: Taming TIGER - An Introduction to Census Geography. The workshop covered the geography of census, sources of spatial and demographic data, and how to join the two types of data within a GIS.

Guest Lecturer in GEO358: Geographic Information Science, Geography Department, Fall 2003. Lecture presented the geography of census, sources for spatial and demographic census data, and a few practical applications for these data in a GIS.

#### **LAURA KRIEGSTROM STULL**

Publications:

*2002 Kansas Statistical Abstract* - online. Design of publication and production of maps and graphs, September 2003.

*The Kansas City Economy: Performance, Innovation, and Resources for Future Economic Progress*. Design of final report for the KCCatalyst grant, December 2003. Report completed in early 2004.

*The Economic Barometer: A Quarterly Economic Report*, 2nd quarter, 2003 and 3rd quarter, 2003. Design and production of new online economic indicators report for Lawrence Chamber of Commerce.

Logo

Design of logo and flyer for the 2003 Spring Seminar Series, *Understanding the Pipeline: Differences by Race, Sex and Ethnicity in Education, Training, and Careers*, cosponsored by PRI and the Hall Center for the Humanities at the University of Kansas, Spring 2003.

Conferences and Seminars:

Coordinator of the 2003 Kansas Economic Policy Conference, *Thirst for Growth: Water and Our Economic Future*, October 2003.

Coordinator of the 5-part spring seminar series, *Understanding the Pipeline: Differences by Race, Sex and Ethnicity in Education, Training, and Careers*.

#### **CATHERINE E. WEAVER**

Publications or Research:

*The Hypocrisy of International Organizations: Rhetoric, Reality and Reform in the World Bank*. Ph.D. Dissertation, defended 1 May 2003, University of Wisconsin-Madison. (currently under revision for review by Cornell University Press).

Daniel Nielson, Michael Tierney, and Catherine Weaver. "The Argument is the Incentive: Agency, Organizational Culture and the World Bank's Strategic Compact." Article currently under review at *International Studies Quarterly*.

Presentations:

"Rethinking IO Reform: Staffing Changes and Bureaucratic Reform Within Multilateral Development Banks," Co-authored paper (with Michael Tierney and Dan Nielson) presented at the American Political Science Association Annual Meeting, Philadelphia, September 2003.

"The Changing Composition of World Bank Staff: Screening and Selection as a Means of Agency Control," Co-authored paper (with Michael Tierney and Dan Nielson) presented at the International Studies Association Annual International Conference, Budapest, Hungary, June 2003.

"Principles and Principals? Prospects for Theoretical Synthesis in the Study of International Organization," Co-chair (with Michael Tierney) of a roundtable panel at the International Studies Association Annual International Conference, Budapest, Hungary, June 2003. Panelists included Michael Barnett, Frank Schimmelfennig, Duncan Snidal, Roland Vaubel, and Celeste Wallander.

"Dissolving Disputes and Building Bridges: Exploring IO Behavior and Change." Paper presented at the International Studies Association Annual Conference, February 2003, Portland, Oregon.

#### STACEY SWEARINGEN WHITE

Journal Article:

"Sustainable campuses and campus planning: experiences from a classroom case study at the University of Kansas," *International Journal of Sustainability in Higher Education* 4:344-356.

White, Stacey Swearingen and James M. Mayo. "Learning Expectations in Environmental Planning: Predictions and Interpretations," *Journal of Planning Education and Research* (forthcoming).

#### FIONA YAP

Journal Articles:

"Non-Electoral Responsiveness Mechanisms: Evidence from the Asian Less-Democratic Newly Industrialized Countries." *British Journal of Political Science* 33:491-514.

"Government's credible commitment in economic policy-making: Evidence from Singapore," *Policy Sciences* (forthcoming).

Revised Book Manuscript:

*Political Economy of Citizens' Cooperation: Evidence from South Korea, Taiwan, Singapore, and Malaysia*. Revised book manuscript resubmitted to editor for review, with publication commitment from the editorial committee at Lynne Rienner Publishers.

Under Review:

"Agenda Control, Budgetary Politics, and Democracy: Effects on Government Spending in the Asian Newly Industrialized Countries."

"Bargaining in the Less-Democratic NICs: Model and Evidence from South Korea, Taiwan, Singapore, and Malaysia."

Presentations:

Chair and discussant of panel "Organizing Voters and Parties in Asian Democracies" at the Annual Midwest Political Science Association conference in Chicago, April 2003.

Organized panel, "Methodological Issues in the Analysis of Comparative Politics Data" at the Annual Midwest Political Science Association conference in Chicago, April 2003.

#### MARY K. ZIMMERMAN

Journal Article:

Jacqueline Litt and Mary K. Zimmerman. "Global Perspectives on Gender and Carework." *Gender & Society* 17:3. Co-edited this issue and wrote the introduction.

Final Grant Report:

Rosemary Chapin, Mary Zimmerman, Kelley Macmillan, Roxanne Rachlin. July, 2003. Final Report. "Examination of the Use of Medicare Home Health Services and Informal Caregiving and Their Relationship to Successful Community Tenure." State of Kansas Department on Aging and State of Kansas Department of Social and Rehabilitation Services.

## Book Chapter:

Mary K. Zimmerman, Rodney McAdams, and Burton P. Halpert. "Funding Health Services in the Rural United States: Federal Policies and Local Solutions" in Nina Glasgow, Lois W. Morton and Nan Johnson, eds. *Critical Issues in Rural Health*. Iowa State Press (in press).

## Papers/Presentations:

Mary K. Zimmerman and Rodney McAdams. "Publicly Funded Local Health Care in Rural Areas," American Sociological Association, Atlanta, August 2003.

Jan Thomas and Mary K. Zimmerman. "Beauty and Biology: Another Repackaging of Women's Health Care" Society for the Study of Social Problems, Atlanta, August 2003.

Kelley Macmillan, Jeanne Hayes, Rosemary Chapin, Roxanne Rachlin and Mary Zimmerman. "Community Tenure of Older Adults: The Role and Cost-Effectiveness of Community-Based Services in Lieu of Permanent NF Placement" Gerontological Society, San Diego.

Rosemary Chapin, Mary Zimmerman, Kelley Macmillan, Roxanne Rachlin and Colleen Reed. "Longitudinal Research Policy Implications: Comparison of Community Dwelling Older Adults' Long Term Care Needs to Permanent NF Residents." Gerontological Society, San Diego.