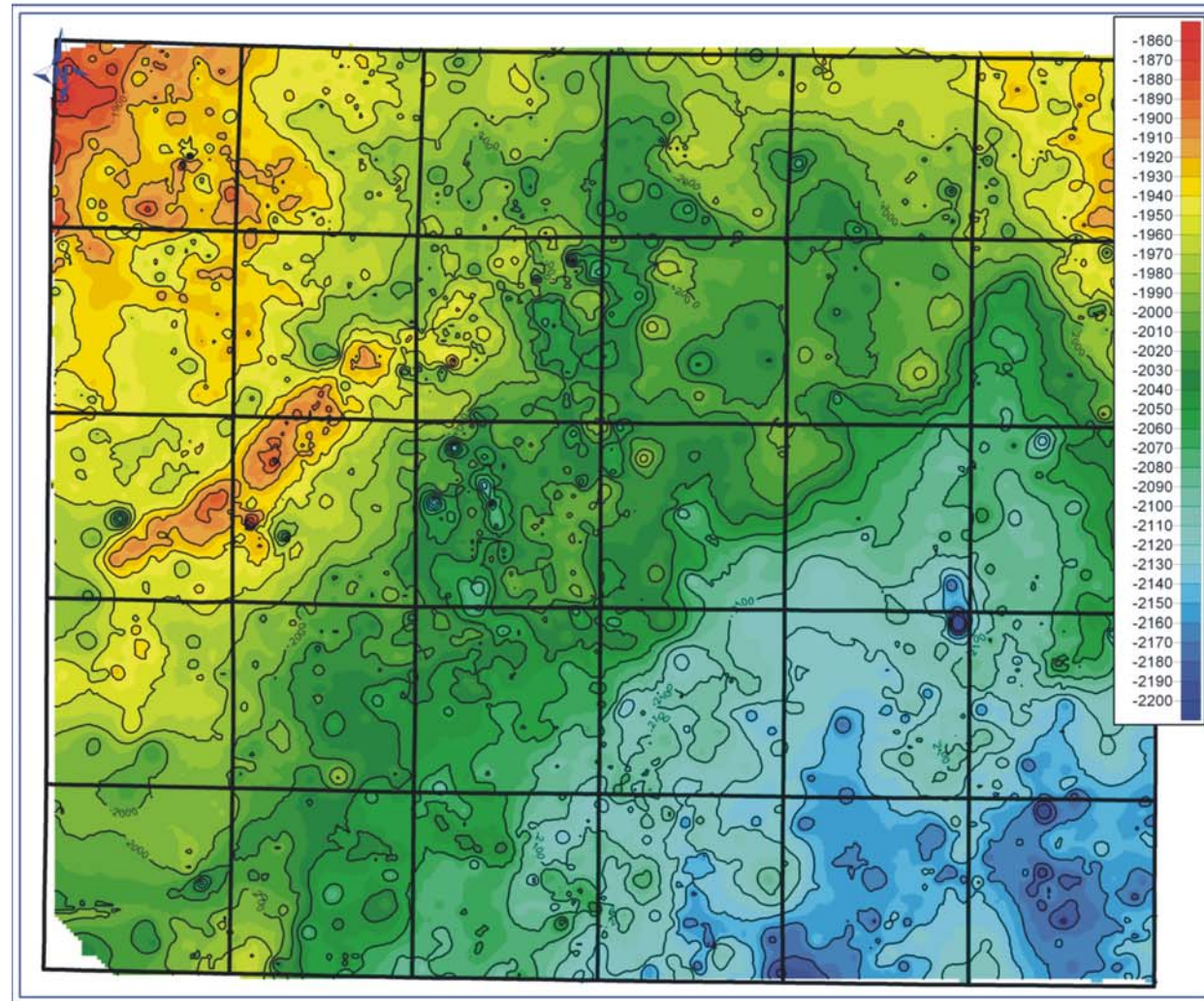
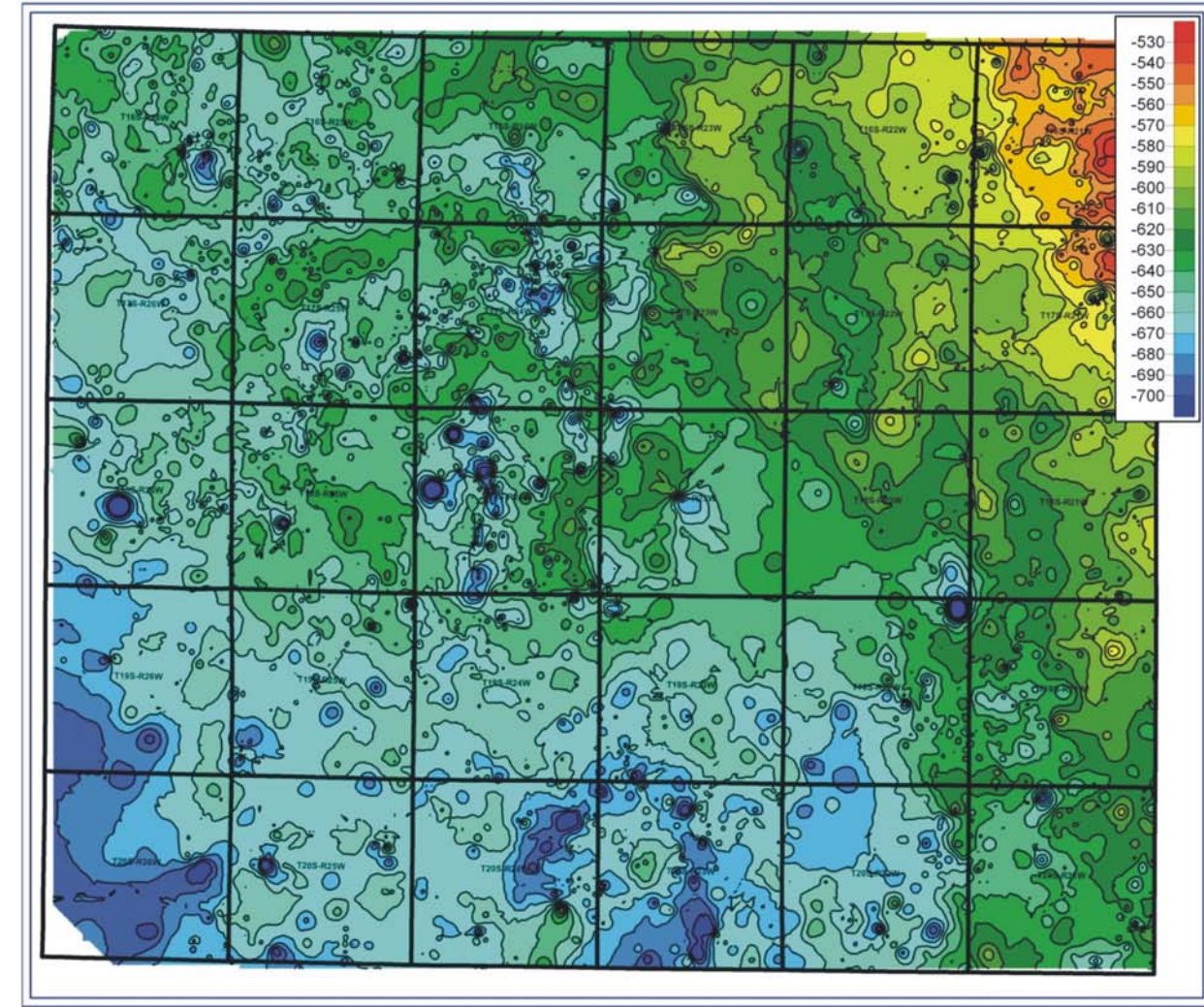


Mississippian structure map  
without Heebner Shale surface  
removed

Mississippian structure map  
with Heebner surface  
removed



Subtract  
Heebner Shale  
surface  
→



6 mi 10 km N

6 mi 10 km N

**Figure 3.5.** Maps showing the contoured structure with left representing present day configuration and right showing post-Heebner deformation removed. Note the Aldrich Anticline in west-central Ness County was not present during the Pennsylvanian. Color contours on 10 feet intervals and outlined contours are on 20 feet intervals. Depths in feet subsea.