



Figure 1.1 Page from *Bear's Heart Ledger* National Museum of the American Indian. Photograph by Carmel Guadagno. Used with permission.

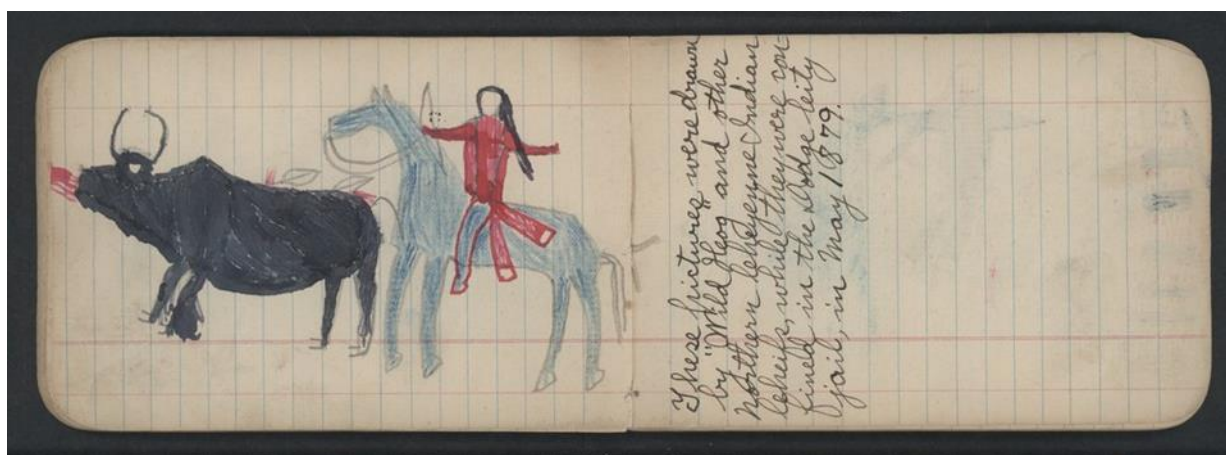


Figure 2.1 "Pictures Drawn by Wild Hog and Other Cheyenne Indians, pgs. 41-40 Rotated 180 Kansas Historical Society Archive, Kansas Memory. Fair Use.



Figure 2.1 *Kansas Historical Society sign located in front of the archive and museum complex. Image mine.*

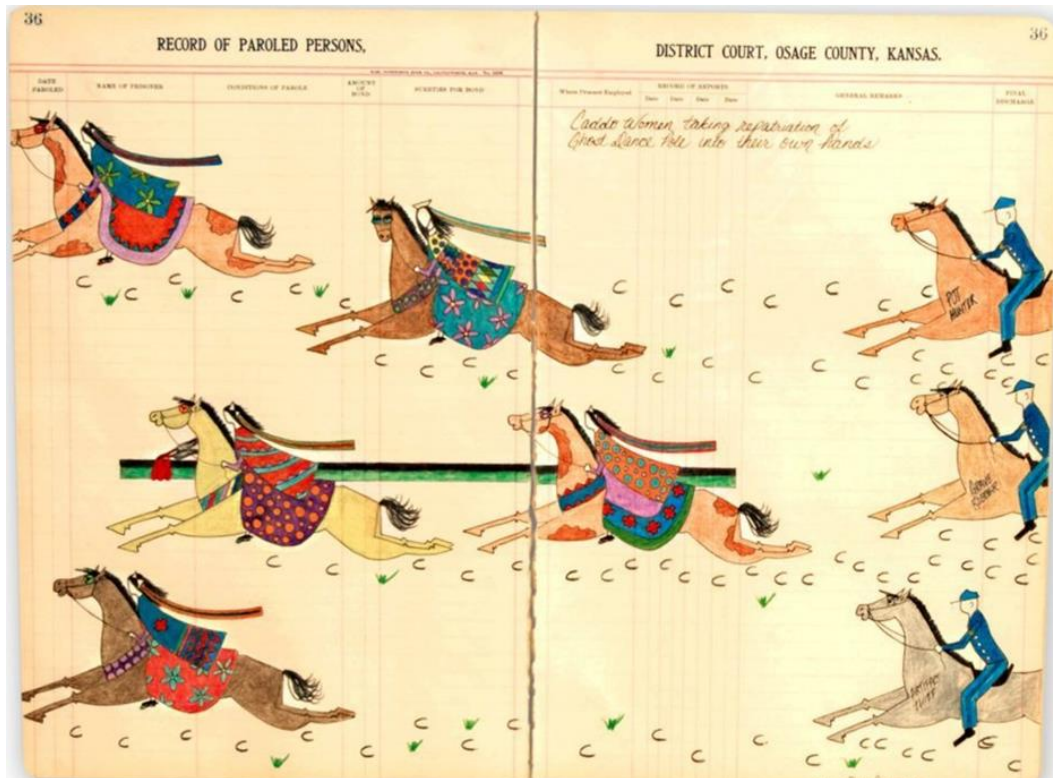


Figure 2.3 *“Caddo Women taking repatriation of Ghost Dance Pole into own hands,” Dolores Purdy-Corcoran, Kansas Historical Society Archive, Kansas Memory. Fair Use.*



Figure 3.1 “America” at main entrance to Alexander Hamilton U.S. Custom House. Library of Congress. Fair Use.



Figure 3.2 A mid-19th century Upper Missouri man's shirt tells tales of battle through its painted designs. It hangs at the entry of “Unbound: Narrative Art of the Plains” at the Smithsonian's National Museum of the American Indian in New York. Photo by Joshua Voda, NMAI. Used with permission.

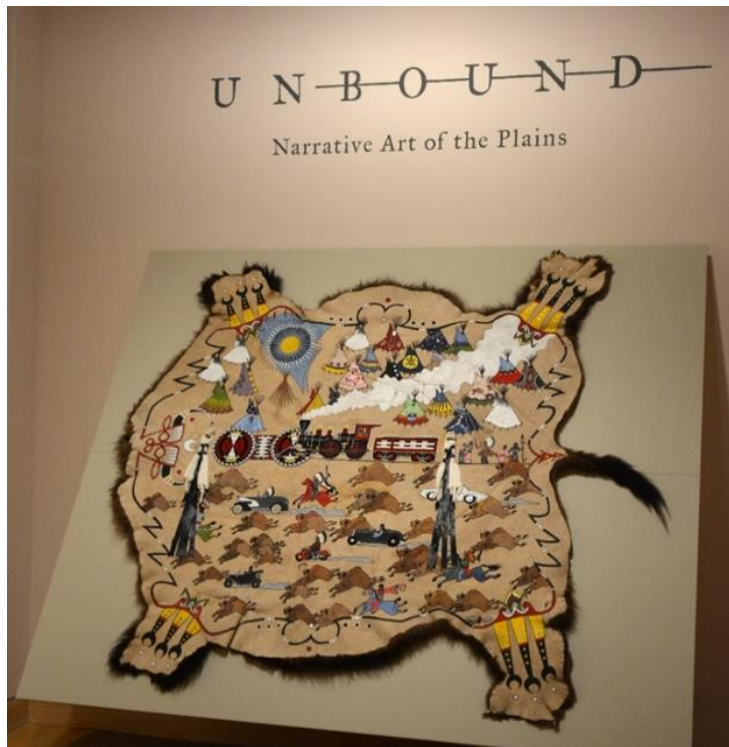


Figure 3.3 “Conductors of Our Own Destiny, Dallin Maybee. *It greets visitors to the contemporary section of the “Unbound: Narrative Art of the Plains” exhibit. Photo by Joshua Voda, NMAI. Used with permission.*

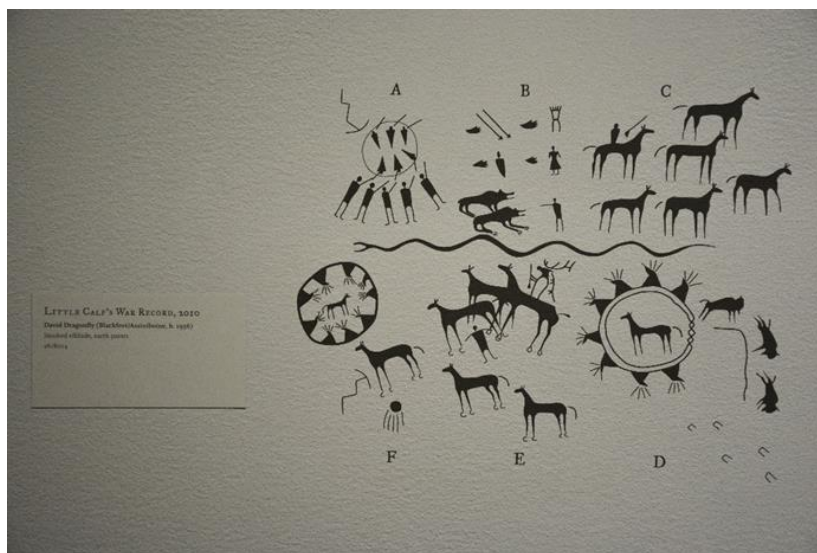


Figure 3.4 A graphic legend explains the detail found within “Little Calf’s War Record,” a painted elkhide by David Dragonfly (2010). *Photo by Joshua Voda, NMAI. Used with permission.*

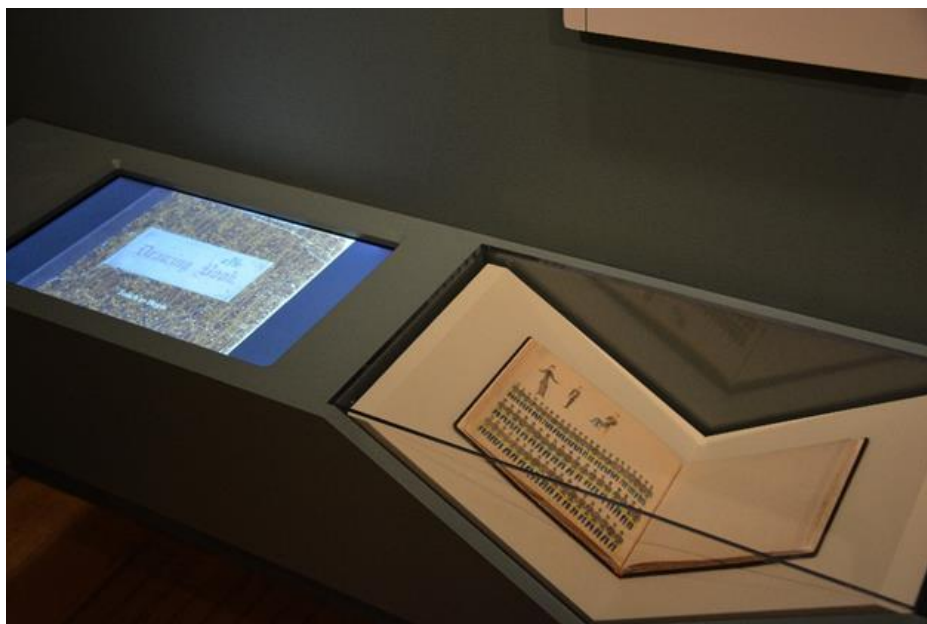


Figure 3.4 Ledger books by Bear's Heart (seen here) and Zotom have been digitized for visitors to be able to scan through the entirety of the books. Photo by Joshua Voda, NMAI. Used with permission.



Figure 4.1 Hand Games, Dwayne Wilcox, National Museum of the American Indian, Smithsonian Institution. Used with permission.



Figure 4.2 Independence Day, Lauren Good Day Giago National Museum of the American Indian, Smithsonian Institution. Used with permission.

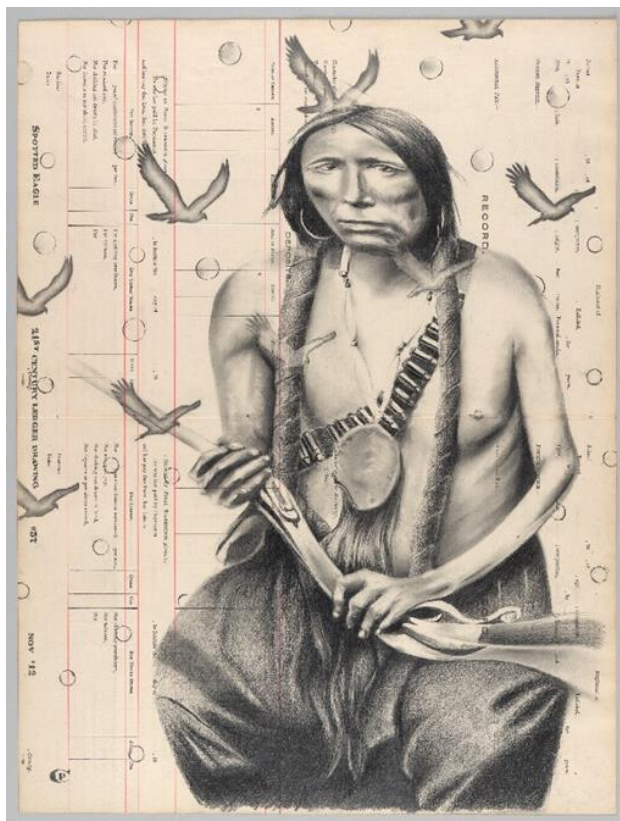


Figure 4.3 Spotted Eagle, Chris Pappan, 2012, National Museum of the American Indian, Smithsonian Institution. Used with permission.



Figure 4.3 Identity Protection, Dallin Maybee, 2015, National Museum of the American Indian, Smithsonian Institution. Used with permission.



Figure 5.1 James Welch Google Doodle (November 18, 2016). Fair Use.



Figure 5.2 Multimodal Conversations between Google Doodle and Terrance Guardipee’s “Mountain Chief” Fair Use; Used with permission.



Figure 5.3 Tyler Read Graffiti in Rapid City, South Dakota. Fair Use.