

e/022./205

**FREE
TAKE ONE**

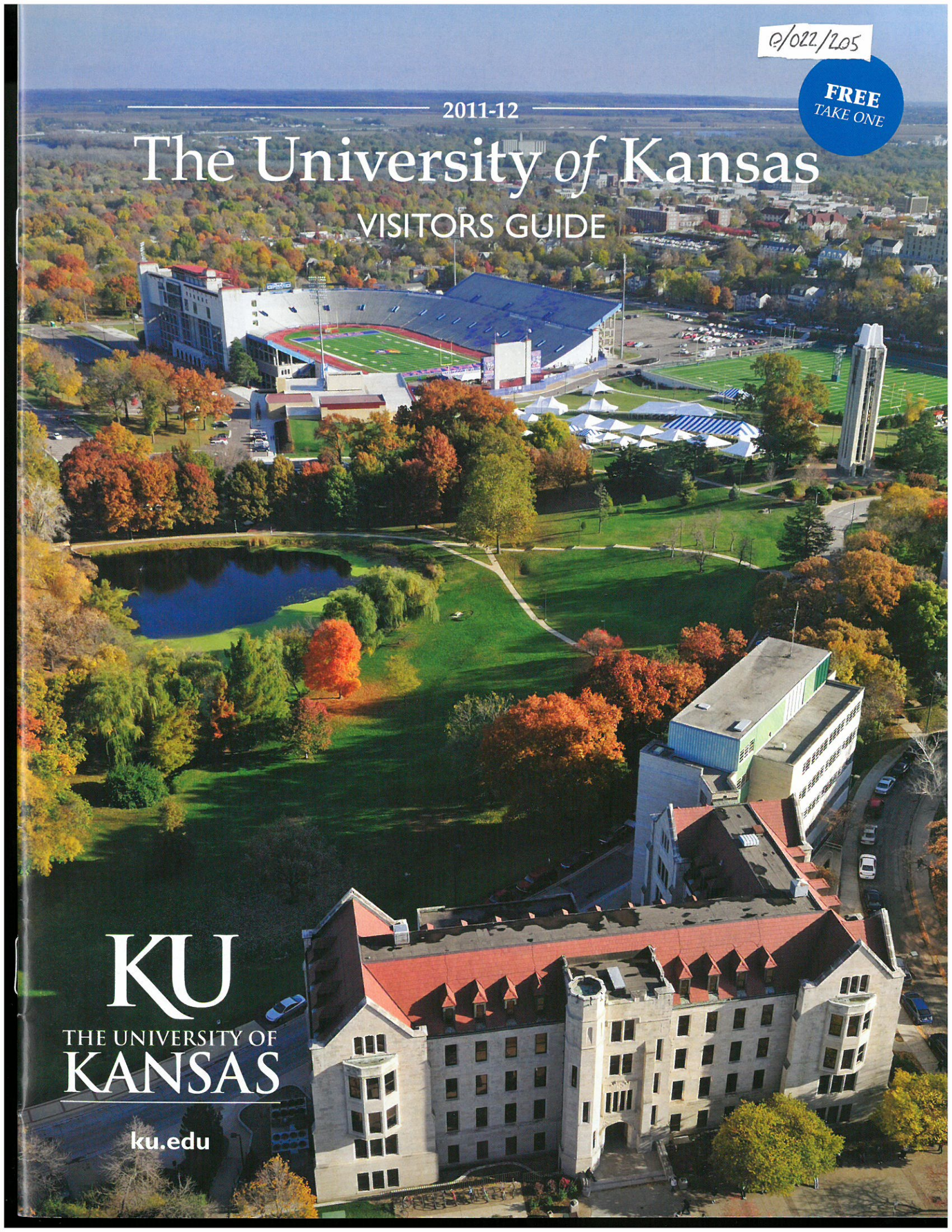
2011-12

The University of Kansas

VISITORS GUIDE

KU
THE UNIVERSITY OF
KANSAS

ku.edu



Free Attractions

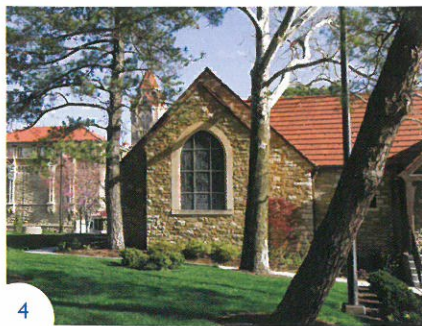
Spend your day enjoying our 29,000 trees, hilltop views, fountains, and colorful meadows. Or head inside to enjoy acclaimed museums offering fun for the family and insight into art, natural history, politics, athletics, and more.



2



3



4

1. **Art and Design Gallery**
300 Art and Design Building
1467 Jayhawk Blvd.
art.ku.edu/about/art_design_gallery.shtml
This exhibition space features works by students, faculty, and visiting artists. **Hours:** 1–4:30 p.m. Sun., 8:30 a.m.–4:30 p.m. Mon.–Wed., 8:30 a.m.–9 p.m. Thurs., 8:30 a.m.–1:30 p.m. Fri. 785-864-4401.
2. **Audio-Reader Sensory Garden**
1120 W. 11th St.
reader.ku.edu/garden.shtml
Audio-Reader is a free service that provides audio recordings of print materials for visually impaired people. This garden is designed to engage all the senses. Plants with interesting textures intermingle with fragrant leaves of mint and lavender. The sounds of wind chimes join the chirping of birds visiting the feeders. Plants are in raised beds, making a hands-on experience easy for pedestrians and wheelchair users. 785-864-4634.
3. **Booth Family Hall of Athletics**
Allen Fieldhouse
1651 Naismith Drive
kuathletics.com/hallofathletics
This all-sports museum includes interactive exhibits, championship trophies, and memorabilia from coaches, teams, and athletes, past and present. KUStore.com, located inside the museum, sells mementos and fan favorites. **Hours:** 10 a.m.–5 p.m. Mon.–Sat. (Game day hours vary.) 785-864-7050.
4. **Danforth Chapel**
1405 Jayhawk Blvd.
danforth.ku.edu
This interfaith, nondenominational chapel, dedicated April 2, 1946, is popular for weddings and private contemplation. **Hours:** 7:30 a.m.–10 p.m. Mon.–Fri. 785-864-4861.

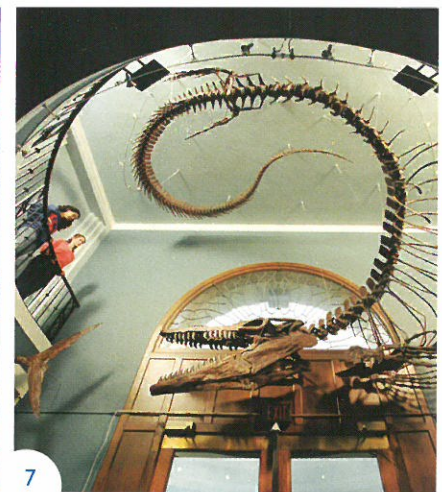
5. **Dole Institute of Politics**
2350 Petefish Drive
doleinstitute.org
Named for KU alumnus and former U.S. Sen. Bob Dole, this center holds the former presidential candidate's congressional archives. It also features history exhibits on Dole's life, a stained-glass American flag, columns from the World Trade Center, and a memory wall/photo kiosk honoring World War II veterans from Kansas. **Hours:** Noon–5 p.m. Sun., 9 a.m.–5 p.m. Mon.–Sat. 785-864-4900.
6. **Memorial Drive**
Between West Campus Road and Mississippi Street
Three of KU's war memorials are located along this winding road: the Korean War Memorial, the Memorial Carillon and Campanile, and the Vietnam War Memorial. The drive overlooks Memorial Stadium and the Kansas Union, both of which are World War I memorials. See pages 16–17 for map.
7. **Natural History Museum**
Dyche Hall
1345 Jayhawk Blvd.
www.nhm.ku.edu
This museum's exhibits focus on the biological diversity of Kansas and the Great Plains. The fossil exhibits of extinct mammals, dinosaurs, reptiles, and fish are especially popular. The Panorama of North American plants and animals contains realistic scenes of animal and plant life from Alaska to Mexico. **Hours:** Noon–5 p.m. Sun., 9 a.m.–5 p.m. Tues.–Sat. 785-864-4450.

8. Pharmacy Museum

School of Pharmacy Building
2010 Becker Drive
The museum on the School of Pharmacy Building's second level features a timeline on notable developments in the field, displays on milestones in KU pharmacy research, historic drug ads, and information on modern techniques. The museum also houses an old-fashioned soda fountain.
Hours: 8 a.m.–5p.m. Mon.–Fri. 785-864-3591.



5



7

9. Potter Lake/Marvin Grove

Potter Lake, constructed in 1910, is one of the loveliest spots on campus and is a popular hangout for students, especially on sunny days. The wooded and hilly area surrounding the lake is known as Marvin Grove.

10. Spencer Museum of Art

1301 Mississippi St.
www.spencerart.ku.edu
Long recognized as one of the finest university art museums in the nation, the Spencer houses an internationally known collection of nearly 36,000 artworks and artifacts in all media. Significant holdings include East Asian art; medieval art; European and American paintings, sculpture and prints; photography; Japanese Edo-period painting and prints; textiles and quilts; 20th century Chinese painting; and an ethnographic collection of about 10,000 Native American, African, Latin American, and Australian works. **Hours:** Noon–4 p.m. Sun., 10 a.m.–4 p.m. Tues.–Wed., 10 a.m.–8 p.m. Thurs., 10 a.m.–4 p.m. Fri.–Sat. 785-864-4710.



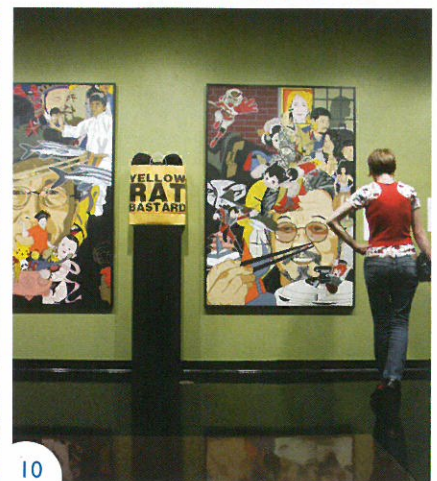
6

II. Wilcox Classical Museum

103 Lippincott Hall
1410 Jayhawk Blvd.
wilcoxmuseum.ku.edu
This museum features antiquities such as vases, coins, small sculptures, lamps and architectural terra cottas, and full-size replicas of well-known works of Greek and Roman sculpture. **Hours:** 9 a.m.–4 p.m. Mon.–Fri. 785-864-3153.



9



10

Athletic Venues



Memorial Stadium is nestled among hundreds of trees, providing an idyllic setting for Saturday afternoon gridiron contests. Many of KU's athletics facilities are on the other side of the Hill, radiating out from revered Allen Fieldhouse. For tickets to Kansas Athletics events, call 785-864-3141 or visit the ticket office at Allen Fieldhouse. Ticket office hours are 9 a.m.–5 p.m. Mon.–Fri. To order online: kutickets.com.

Allen Fieldhouse

1651 Naismith Drive
Men's and women's basketball

Alvamar Golf and Country Club

1800 Crossgate Drive
Men's and women's golf

Anschutz Sports Pavilion

1575 Irving Hill Road
Men's and women's indoor track and field

Arrocha Ballpark

1560 Oliver Drive
Softball

Jayhawk Tennis Facility

5200 Clinton Parkway
Women's tennis

Hoglund Ballpark

1545 Allen Fieldhouse Drive
Baseball

Horejsi Family Athletics Center

1550 Allen Fieldhouse Drive
Women's volleyball

Jayhawk Soccer Complex

19th Street and Naismith Drive
Women's soccer

Kansas Rowing Boathouse

220 Indiana St.
Women's rowing

Memorial Stadium

1101 Mississippi St.
Football and men's and women's outdoor track and field

Rim Rock Farm

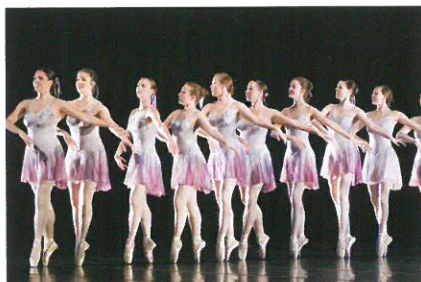
2276 Burnett Lane
Men's and women's cross country

Robinson Gymnasium

1301 Sunnyside Ave.
Women's swimming and diving

Performing Arts Venues

From symphony concerts to world-class theater, there's always something to do at KU.



Bales Organ Recital Hall

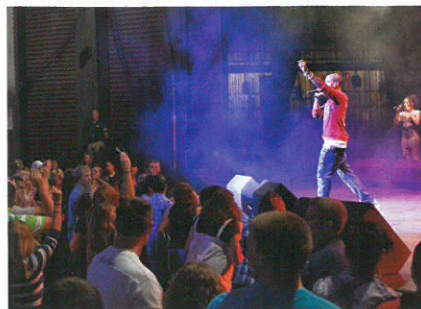
Lied Center
bales.ku.edu

One of the finest facilities in the country, this hall provides optimum acoustical balance for the 35-foot-tall organ pipes. For information about performances, call 785-864-3436 or 785-864-2787.

Lied Center

1600 Stewart Drive
lied.ku.edu

This 2,000-seat performing arts center hosts world-class artists in music, dance, and theatre. For tickets, call 785-864-2787 or visit the Lied Center ticket office 11 a.m.–6 p.m. Mon.–Fri. (summer hours, May 10–Aug. 13, noon–5:30 p.m. Mon.–Fri.)



Murphy Hall

1530 Naismith Drive
kutheatre.com

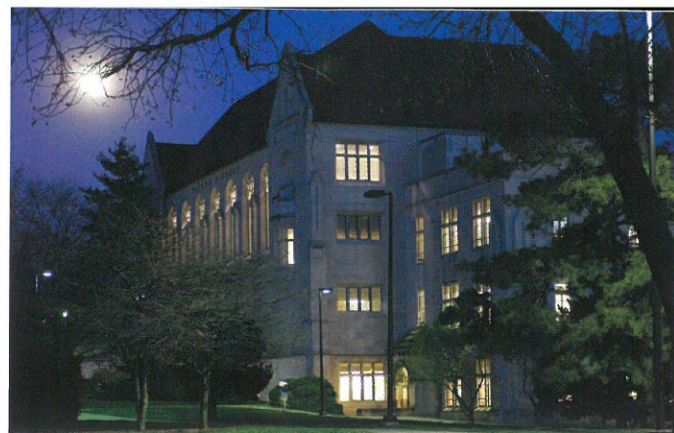
This building houses the Crafton-Preyer Theatre, Inge Theatre, Robert Baustian Theatre, and Swarouth Recital Hall. For tickets to University Theatre events, call 785-864-3982 or stop by the ticket office at 311 Murphy Hall. Ticket office hours are noon–5 p.m. Mon.–Fri.

Student Union Activities

Kansas Union
suaevents.com

SUA hosts events for students and the public, including concerts, lectures, and comedic performances. Tickets can be purchased at the SUA box office on the fourth floor of the Kansas Union 9 a.m.–5 p.m. Mon.–Fri. Call 785-864-SHOW for more information.

Meeting Places



Watson Library

KU Visitor Center

1502 Iowa St.
visitorcenter.ku.edu



This is a good first stop for all campus visitors. The center provides brochures, maps, exhibits, tours, and other introductory information about KU. It also houses the Office of Admissions.

Adams Alumni Center

1266 Oread Ave.
www.kualumni.org

This building is home to the KU Alumni Association. The Adams center has reception areas; conference and meeting rooms; a lounge; and a library. Public parking available in the Mississippi Street Parking Garage.

Hall Center for the Humanities

900 Sunnyside Ave.
hallcenter.ku.edu

The Hall Center's primary mission is to support research in the humanities, arts, and social sciences, especially of an interdisciplinary kind, at KU. Its renowned Humanities Lecture Series has brought to campus speakers such as author Vladimir Nabokov and novelist and essayist Salman Rushdie. The center has conference rooms and a small concert/lecture space.

Sabatini Multicultural Resource Center

1299 Oread Ave.
oma.ku.edu

This center houses staff and program offices for the Office of Multicultural Affairs, an auditorium, and academic support and study rooms for students. Public parking available in the Mississippi Street Parking Garage.

Spencer Research Library

1450 Poplar Lane
spencer.lib.ku.edu

This library is home to the University Archives, the Kansas Collection (which includes manuscripts, historical photographs, maps, architectural drawings, books, newspapers, film, and videotapes that document the "Kansas experience"), and Special Collections. Public parking available in the Mississippi Street Parking Garage.

Spooner Hall

1340 Jayhawk Blvd.
thecommons.ku.edu

Spooner Hall, the university's first library, was listed on the National Register of Historic Places in 1974. The space on the main level, known as the Commons, is used for meetings, workshops, symposia, lectures, and exhibits on the arts, sciences, and humanities. Public parking available in the Mississippi Street Parking Garage.

Watson Library

1425 Jayhawk Blvd.
lib.ku.edu

This library houses collections in social sciences, humanities, education, journalism, and social welfare; administrative and processing offices; conservation laboratory; and computer classrooms. A new gallery space on the third floor features revolving exhibits that highlight library collections and campus scholarship. Public parking available weekdays in the Mississippi Street Parking Garage and weekends along Jayhawk Boulevard.



Academic Resources and Customer Service Centers



Pulse Coffee Bar, Hashinger Hall

Department of Student Housing

422 W. 11th St.

www.housing.ku.edu

On-campus housing is convenient and affordable and helps students succeed academically. Studies show that students who live in campus housing are more satisfied with college, earn higher GPAs, and are more likely to graduate on time. KU operates eight residence halls, 12 scholarship halls, and three apartment complexes.

On-campus housing provides meal plans, on-site staff for safety, security systems, leadership and job opportunities, Internet, social and educational events, Academic Resource Centers, and KU Card-operated laundries.

Residence halls: Six are co-ed. Men occupy one wing, the lobby is in the center, and women occupy the other wing. Two halls house only women. The residence halls house between 280 to 912 students each. Many options are available, including private rooms with shared baths, traditional rooms, and suites for two or four people.

Scholarship halls: Residents take part in cooking and cleaning their halls in exchange for a reduced housing rate. Residents are not required to have earned an academic scholarship from KU to live in a scholarship hall.



Housing tours are 11:30 a.m.–1:30 p.m. Monday–Saturday in McCollum, Lewis, and Hashinger halls on Engel Road. Student tour guides will meet you at the front desk. No reservations required. Scholarship hall tours are offered 3–5 p.m. Monday–Saturday when classes are in session. Meet at the Crawford Community Center, 1346 Louisiana St. Student tour guides will be available, and no reservations are required.

Apartments: Jayhawker Towers and Stouffer Place, for single students and families, offer greater privacy, a 24-hour information and resource center, on-site staff, Internet access, KU Card-operated laundry, and optional meal plans. Sunflower Apartments are for university guests.

Continuing Education

1515 St. Andrews Drive

continuinged.ku.edu

Drawing upon the strength of KU's world-class faculty, Continuing Education offers courses for working professionals, independent study courses for KU credit, the Aerospace Short Courses program, the Osher Lifelong Learning Institute for older adults, the Kansas Fire and Rescue Training Institute, and the Kansas Law Enforcement Training Center. Continuing Education serves more than 70,000 people of all ages and backgrounds.



Kansas Union

1301 Jayhawk Blvd.

union.ku.edu

The union is a hub for student interaction, activities, and more. Each level features historical displays about the university, including 25 museum-quality history panels, the first Baby Jay costume, the Big Tooter steam whistle, the KU Women's Hall of Fame, and the Jennings Jayhawks — a collection of more than 1,000 items, some dating back to the early 1900s

Hours while school is in session:

Noon–9 p.m. Sun., 7 a.m.–11 p.m.

Mon.–Fri., 8 a.m.–11 a.m. Sat.

785-864-4651.

Level 1: Hawk's Nest lounge area, Jaybowl, and Milton's Coffee

Level 2: KU Bookstores

Level 3: Market food court, Impromptu Café, KJHK 90.7 FM, Salon Hawk, and FedEx Office

Level 4: Student art gallery, Hawk Shop convenience store, ATMs and banking, KU Info booth, Kaplan Test Prep, Student Involvement and Leadership Center, Student Union Activities, KU Card Center, and Pulse Coffee Bar

Levels 5 and 6: Meeting and reception rooms and Woodruff Auditorium

Walking Tour

Jayhawk Boulevard is the heart of the KU campus. As you make your way along the thoroughfare, you will view historic buildings, statues, and other landmarks.



2

1. **Snow Hall** (1930)
Style: Collegiate Gothic
Named for: KU's fifth chancellor, Francis Snow



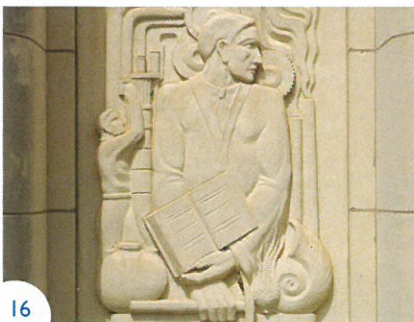
5

2. **Strong Hall*** (1911-24)
Style: Classical Revival
Named for: KU's sixth chancellor, Frank Strong
 📷 Strong Hall's Jayhawk statue is perfect for pictures. Visit in early morning or late afternoon, when the sun most evenly lights Strong Hall. Add a unique perspective by taking a photo looking up from below the big bronze bird, or shoot straight ahead to capture the bright flowerbeds in the photo.



10

3. **Bailey Hall*** (1900)
Style: Romanesque
Named for: Chemistry professor E.H.S. Bailey, creator of the Rock Chalk Chant



16

4. **Lippincott Hall*** (1905)
Style: Greek Revival
Named for: KU's fourth chancellor, Joshua Lippincott
 📷 Take a photo from far enough away to capture all of the Daniel Chester French memorial statue, "Uncle Jimmy Green," and the hall's pillars. You could also try standing just inside the pillars and shooting out toward Fraser Hall for a unique photo.

5. **Dyche Hall*** (1902)
Style: Venetian Romanesque
Named for: Professor, taxidermist, and explorer Lewis Lindsay Dyche

6. **Kansas Union** (1927)
Style: Collegiate Gothic
 📷 Visit the Traditions Tower in mid- or late morning, while the sun lights up the Spencer Museum of Art, the campanile, Marvin Grove, and Memorial Stadium. From the fifth or sixth floors you can capture a wide view through the windows. Or pose in front of the "Classic Jayhawk" statue out front.

7. **Smith Hall** (1967)
Style: Modernist
Named for: Donor Irma I. Smith
 📷 Evening light is best for shooting the Moses statue in front of Smith Hall, directly across Jayhawk Boulevard east of the union. Don't miss "Burning Bush," the hall's stained-glass window just north of the statue.

8. **Spooner Hall*** (1894)
Style: Romanesque Revival
Named for: Philanthropist William B. Spooner, uncle of Chancellor Francis H. Snow

9. **Danforth Chapel** (1947)
Style: Gothic Revival
Named for: Donor William H. Danforth

10. **Fraser Hall** (1967)
Style: Modern
Named for: KU's second chancellor, John Fraser

11. **Watson Library** (1924)
Style: Collegiate Gothic
Named for: Carrie Watson, KU librarian from 1887 to 1921
 📷 For a unique composition, stand just in front of the flowers around the limestone bulletin boards at the sidewalk from Jayhawk Boulevard to the library. Shoot low-to-high to get the flowers in the foreground and Fraser in the background.



Want more?

 Use our free iPhone app to view a searchable campus map to pinpoint your location and look up building information. The app also includes videos, campus news, and checklists for applicants and admitted students.

To download: connect.ku.edu

12. Stauffer-Flint Hall (1898)

Style: Romanesque

Named for: Topeka media magnate Oscar Stauffer and longtime journalism professor Leon N. Flint

13. Wescoe Hall (1973)

Style: Modernist

Named for: KU's 10th chancellor, W. Clarke Wescoe

14. Budig Hall (1997)

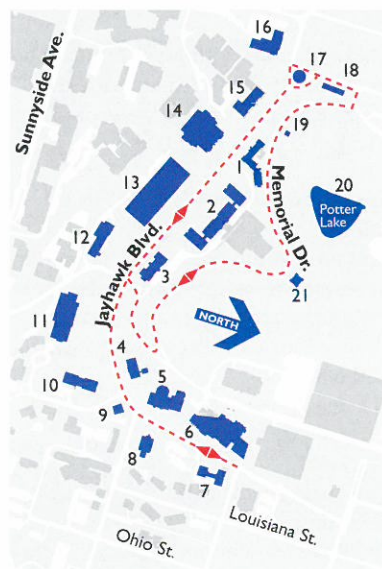
Style: Collegiate Gothic

Named for: KU's 14th chancellor, Gene Budig

15. Marvin Hall (1909)

Style: Collegiate Gothic

Named for: James Marvin, KU's third chancellor, and his son, F.O. Marvin, first dean of engineering




16. Lindley Hall (1943)

Style: Art Moderne

Named for: KU's seventh chancellor, Ernest Lindley

17. Chi Omega Fountain (1955)

 Visit in the late afternoon, pointing your camera east with Jayhawk Boulevard stretching out in the distance.

Memorial Drive runs from West Campus Road east to Mississippi Street. It complements the campanile, honoring the 277 KU alumni, students, faculty, and staff who died in World War II and the more than 7,000 who served, and overlooks Memorial Stadium, a World War I tribute.

18. Vietnam War Memorial (1986)

This memorial was the first on-campus commemoration of the war in the nation.


19. Korean War Memorial (2005)

 Go in the late afternoon and take the picture seated on the ground and looking up to capture the bright blue sky. This creates a nice contrast with the red bricks surrounding the memorial and the statue, "Korean Cranes Rising."




19

20. Potter Lake (1911)

 The evening light is gorgeous around Potter Lake. The bridge is a particularly nice spot for photos.

21. Memorial Campanile (1951)

 Try sitting or standing on the bench down the hill northeast of the campanile to get the entire landmark in your shot. Similar views exist on the northwest side, near Potter Lake.



20

* Building is on National Register of Historic Places  Photo tip