



KUMC clinics care for military families

The Center for Child Health and Development at KU Medical Center has been hosting pediatric diagnostic outreach clinics across the state for more than a decade. By visiting sites such as Fort Leavenworth several times a year, clinicians can provide diagnoses and treatment plans for military children before the family might transfer to another base.

[Full Story](#)

TODAY'S HEADLINES



Solving a medieval solar puzzle

New work in Nature Magazine co-authored by Adrian Melott, KU professor of physics, has zeroed in on the cause of a medieval radiation burst researchers began exploring earlier this year.

[Full Story](#)



Spencer museum receives NEA grant

National Endowment for the Arts Chairman Rocco Landesman announced Tuesday that the Spencer Museum of Art at KU is one of 832 nonprofit organizations nationwide to receive an NEA Art Works grant.

[Full Story](#)

CAMPUS NEWS



Research-sharing session announced

The third in a series of research-sharing sessions for faculty will take place at 4 p.m. Friday, Nov. 30, at The Commons in Spooner Hall. Presenters comes from electrical engineering, sociology, visual art and other disciplines.

[Full Story](#)



KU Jazz Vespers

The KU School of Music will present Jazz Vespers at 7:30 p.m. Dec. 6 at the Lied Center. Joining the student performers will be professors Chuck Berg and Vince Gnojek, saxophone; Professor John Stephens, voice; and Dean Robert Walzel, clarinet and saxophone.

[Full Story](#)

TODAY'S EVENTS

LECTURE

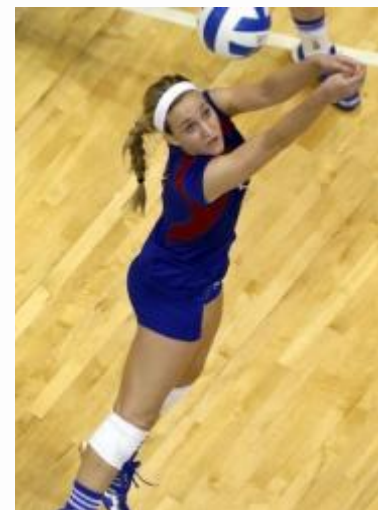
[Bold Aspirations Visitor and Lecture Series: Sir Robert Worcester](#)

The Relevance of the Magna Carta to the 21st Century
7:30 p.m., Thursday, Nov. 29
Dole Institute of Politics
[View all events](#)

TWITTER

[@suaevents](#): Want to see your favorite campus celeb be made into a dance star? Here's how to nominate for KU's Dancing w the Stars- <http://ow.ly/fD6y8>
[View all tweets](#)

FEATURED MULTIMEDIA



ATHLETICS

[Jayhawks to host NCAA volleyball tournament starting Friday afternoon.](#)

More: [photos](#) | [videos](#)

KU IN THE NEWS

Huffington Post (Nov. 29, 2012)
[Ancient Solar Flare Caused Radioactive Carbon Spike In 8th Century, Research Suggests](#)

CONNECT



connect.ku.edu

CAMPUS LINKS

[Chancellor's messages](#)
[Provost e-news](#)
[KUMC leadership messages](#)
[KUMC](#)
[KU Alumni Association](#)
[Edwards Campus](#)
[Kansas Public Radio](#)

KU Today is produced by the [Office of News and Media Relations](#), a division of Public Affairs.

Timothy Caboni, vice chancellor for Public Affairs, caboni@ku.edu
Jill Jess, director, News and Media Relations, jilljess@ku.edu

Office of News and Media Relations
1314 Jayhawk Blvd.
Lawrence, KS 66045
Phone: 785-864-3256
Fax: 785-864-3339
kurelations@ku.edu
<http://www.news.ku.edu>

©2012 The University of Kansas | www.ku.edu

The University of Kansas prohibits discrimination on the basis of race, color, ethnicity, religion, sex, national origin, age, ancestry, disability, status as a veteran, sexual orientation, marital status, parental status, gender identity, gender expression and genetic information in the University's programs and activities. The following person has been designated to handle inquiries regarding the non-discrimination policies: Director of the Office of Institutional Opportunity and Access, IOA@ku.edu, 1246 W. Campus Road, Room 153A, Lawrence, KS, 66045, (785)864-6414, 711 TTY.