

[This document contains the author's accepted manuscript. For the publisher's version, see the link in the header of this document.]

## Genetic diversity and structure in two species of *Leavenworthia* with self-incompatible and self-compatible populations

V A Koelling, J L Hamrick and R Mauricio  
University of Georgia

### Paper citation:

Koelling, V. A., J. L. Hamrick, and R. Mauricio. 2011. Genetic diversity and structure in two species of *Leavenworthia* with self-incompatible and self-compatible populations. *Heredity* 106: 310-318. doi:10.1038/hdy.2010.59

### Keywords:

*Leavenworthia*; self-incompatibility; selfing; genetic diversity; mating system

### Abstract:

Self-fertilization is a common mating system in plants and is known to reduce genetic diversity, increase genetic structure and potentially put populations at greater risk of extinction. In this study, we measured the genetic diversity and structure of two cedar glade endemic species, *Leavenworthia alabamica* and *L. crassa*. These species have self-incompatible (SI) and self-compatible (SC) populations and are therefore ideal for understanding how the mating system affects genetic diversity and structure. We found that *L. alabamica* and *L. crassa* had high species-level genetic diversity ( $H_e=0.229$  and  $0.183$ , respectively) and high genetic structure among their populations ( $F_{ST}=0.45$  and  $0.36$ , respectively), but that mean genetic diversity was significantly lower in SC compared with SI populations (SC vs SI,  $H_e$  for *L. alabamica* was  $0.065$  vs  $0.206$  and for *L. crassa* was  $0.084$  vs  $0.189$ ). We also found significant genetic structure using maximum-likelihood clustering methods. These data indicate that the loss of SI leads to the loss of genetic diversity within populations. In addition, we examined genetic distance relationships between SI and SC populations to analyze possible population history and origins of self-compatibility. We find there may have been multiple origins of self-compatibility in *L. alabamica* and *L. crassa*. However, further work is required to test this hypothesis. Finally, given their high genetic structure and that individual populations harbor unique alleles, conservation strategies seeking to maximize species-level genetic diversity for these or similar species should protect multiple populations.

## Genetic Diversity and Structure in Two Species of *Leavenworthia* With Self-incompatible and Self-compatible Populations

Vanessa A. Koelling\*, J. L. Hamrick‡, and Rodney Mauricio\*

\*Department of Genetics, University of Georgia, Athens, GA 30602, USA, ‡Department of Plant Biology, University of Georgia, Athens, GA 30602, USA

Keywords: *Leavenworthia*, self-incompatibility, selfing, genetic diversity, mating system

Corresponding author: Vanessa A. Koelling, Current Address: Department of Ecology and Evolutionary Biology, University of Kansas, Lawrence, KS 66045, USA, Fax: (785) 864-5860 E-mail: [vkoelling@ku.edu](mailto:vkoelling@ku.edu)

Running Title: Mating System and Genetic Diversity in *Leavenworthia*

Word Count for Main Text: 4,266

## ABSTRACT

Self-fertilization is a common mating system in plants and is known to reduce genetic diversity, increase genetic structure, and potentially put populations at greater risk of extinction. In this study, we measured the genetic diversity and structure of two cedar glade endemic species, *Leavenworthia alabamica* and *L. crassa*. These species have self-incompatible (SI) and self-compatible (SC) populations and are therefore ideal for understanding how the mating system affects genetic diversity and structure. We found that *L. alabamica* and *L. crassa* had high species-level genetic diversity ( $H_e=0.229$  and  $0.183$  respectively) and high genetic structure among their populations ( $F_{ST}=0.45$  and  $0.36$  respectively), but that mean genetic diversity was significantly lower in SC compared to SI populations (SC vs. SI,  $H_e$  for *L. alabamica* was  $0.065$  vs.  $0.206$  and for *L. crassa* was  $0.084$  vs.  $0.189$ ). We also found significant genetic structure using maximum-likelihood clustering methods. These data indicate that the loss of SI leads to the loss of genetic diversity within populations. In addition, we examined genetic distance relationships between SI and SC populations to investigate possible population history and origins of self-compatibility. We find there may have been multiple origins of self-compatibility in *L. alabamica* and *L. crassa*. However, further work is required to test this hypothesis. Finally, given their high genetic structure and that individual populations harbor unique alleles, conservation strategies seeking to maximize species-level genetic diversity for these or similar species should protect multiple populations.

## INTRODUCTION

The evolution of self-fertilization from a predominantly outcrossing mating system is a common form of mating system evolution in plants (Stebbins, 1970) and has also occurred repeatedly in hermaphroditic animals (Jarne and Auld, 2006). Shifting to a self-fertilizing mating system increases homozygosity, reduces effective population sizes (Pollak, 1987; Schoen and Brown, 1991), and may reduce genetic diversity (Jarne and Städler, 1995; Hamrick and Godt, 1996; Nybom, 2004; Glémin et al., 2006). Given that the rate of evolution is a function of the level of genetic variance (Fisher, 1930), populations or species engaging in substantial inbreeding may be more likely to go extinct than those that outcross.

Inbreeding also changes the partitioning of genetic variation among populations thereby increasing genetic structure (Wright, 1951; 1965). In plants, species with mixed-mating or predominantly selfing mating systems have greater genetic differentiation among populations compared to outcrossers (Hamrick and Godt, 1996; Nybom, 2004). Selfing species may also experience recurrent extinction and recolonization events, which have important implications for species conservation since these metapopulation dynamics will further reduce genetic diversity and increase genetic structure (Ingvarsson, 2002). Furthermore, inbreeding may also have more pronounced negative effects in endemic plant species, which often have low genetic diversity and high structure compared to widespread congeners (Cole, 2003). It is therefore especially critical to understand the effects of mating system variation on the genetic diversity and structure of endemic, selfing plants.

Most studies of the effect of mating system on population genetics have utilized a comparative approach; choosing closely related taxa differing only in mating system (e.g., Fenster and Ritland, 1992; Charlesworth and Charlesworth, 1995; Williams et al., 2001). In the present study, we take advantage of a mating system polymorphism in two highly endemic sister taxa: *Leavenworthia alabamica* and *L. crassa* to explicitly test the effects of mating system on genetic diversity and structure.

*Leavenworthia* has long been a genus of historical importance in plant evolutionary genetics with the work of Reed Rollins and David Lloyd. Within both *Leavenworthia alabamica* and *L. crassa* there are self-incompatible (SI) and self-compatible (SC) populations (Rollins, 1963; Lloyd, 1965). The ancestral mating system in the family (Bateman, 1955) and genus (Lloyd, 1967; Beck et al., 2006) is sporophytic self-incompatibility, and its genetic control is likely the same as in other mustard genera (Busch et al., 2008). Within *Leavenworthia*, a small genus of eight annual species, self-fertilization has evolved at least four times and perhaps more if there were multiple origins of SC within *L. alabamica* and *L. crassa* (Rollins, 1963; Beck et al., 2006).

SC populations of *L. alabamica* and *L. crassa* set seed autogamously and have distinctive floral morphology from their SI counterparts (Lloyd, 1965; Lyons and Antonovics, 1991; Busch, 2005). Lloyd (1965) found that SC populations had smaller flowers, reduced anther-stigma distance, and shorter styles relative to SI populations, as well as anthers that dehisced towards rather than away from the stigma. Based on a combination of autogamy rates, floral traits, and vegetative morphology, Lloyd (1965) divided populations of *L. alabamica* into six land races (one SI and five SC), and *L.*

*crassa* into 15 (four SI and 11 SC). In addition to well-documented SI and SC in both species, *L. alabamica* and *L. crassa* are sister species (Beck et al., 2006) that share the same life-history, mode of pollination, and method of seed dispersal (Rollins, 1963; Lloyd, 1965), making it possible to compare mating system effects without the confounding influence of these other factors. Thus, these sister species offer a unique opportunity to examine the parallel effects of mating system evolution on genetic diversity and structure of populations.

Although there have been previous studies of mating system and its impact on genetic diversity and structure in *L. alabamica* and *L. crassa* (Solbrig, 1972; Solbrig and Rollins, 1977; Charlesworth and Yang, 1998; Liu et al., 1998, 1999; Busch, 2005), their results may have been biased due to limited sampling both within and among populations. Here we utilize significantly more loci and larger population sample sizes to address the following questions: 1) Do SI and SC populations differ in genetic diversity? 2) How are populations structured genetically? 3) What are the genetic relationships between SI and SC populations? We then discuss these data with respect to the evolution of self-compatibility within *L. alabamica* and *L. crassa* and their conservation.

## MATERIALS AND METHODS

*Study Species and Population Sampling*—*Leavenworthia alabamica* and *L. crassa* are limestone glade endemics within the Brassicaceae (Rollins, 1963; Beck et al., 2006). Limestone glades are characterized by thin calcareous soil over a dolomitic

limestone base (Baskin et al., 1995). *L. alabamica* and *L. crassa* are winter annuals, growing during winter months when the soil is extremely wet. They germinate in the fall (Sept.-Nov.), with flowering and fruiting occurring mid-March to early May (Rollins, 1963; Lloyd, 1965). Both are pollinated by generalist bee species (Lloyd, 1965).

Glades of *L. alabamica* and *L. crassa* are patchily distributed within the Moulton and Tennessee Valleys of northwestern Alabama (Rollins, 1963). *L. crassa* occurs within two counties in the eastern Moulton Valley, whereas *L. alabamica* occurs in four counties, one of which (Colbert Co.) is located in the Tennessee Valley (Fig. 1). Their ranges overlap in Morgan Co., where possible hybrids have been observed (Lloyd, 1965). We collected seeds from 10 populations of *L. alabamica* and 5 of *L. crassa* (Fig. 1). Fewer populations were collected for *L. crassa* due to habitat destruction.

Seeds were collected from individuals every few meters along transects spanning each population. The number of individuals sampled varied with population size (estimated visually). Populations tended to be either large (>1,000 individuals) or small (<500 individuals). GPS coordinates were recorded and geographic distances calculated between populations using the software GENEPOP (Rousset, 2008).

We used the race maps from Lloyd (1965) to determine the breeding system of each population. For *L. alabamica*, races sampled were: a1=SI; a2=SC; a3=SC; Tuscumbia=SC; and Russellville=SC (Table 1). For *L. crassa*, we sampled four races: c1=SI; c3=SI; c5=SC; c15=SC (Table 2). It is important to note that race c5 was in close geographic proximity to race c3 and that the two overlapped in some areas of Lloyd's

map. Thus, it is possible that CR55 is actually race c3 since self-pollinations were not performed.

*Genetic Analyses*—Seeds from each population were grown in The University of Georgia greenhouses. Seeds were planted in Fafard (Syngenta Group Co., Agawam, Massachusetts, USA) potting soil mixed with lime (approximately 128g lime per bag), and rosettes were transplanted into 15 cm pots. Plants were watered daily and fertilized weekly with Peter's 20-10-20 Peat Lite Special at ~250 ppm. Once rosettes were large enough, leaf tissue was snap frozen in liquid nitrogen and stored in a -80°C freezer until extraction of allozyme proteins. Due to variation in germination, sample sizes varied among populations (see Tables 1 and 2).

Each individual was crushed with a mortar and pestle, and an extraction buffer (Wendel and Parks, 1982) was added to solubilize and stabilize the enzymes. Enzyme extracts were absorbed onto chromatography paper wicks and stored at -80°C until starch gel (11%) electrophoresis. We resolved the following enzymes for *L. crassa*: diaphorase (DIA), fluorescent esterase (FE), leucine-amino peptidase (LAP), malate dehydrogenase (MDH), malic enzyme (ME), 6-phosphogluconate dehydrogenase (6-PGDH), phosphoglucoisomerase (PGI), shikimate dehydrogenase (SKDH), triose-phosphate isomerase (TPI), and UTP-glucose-1-phosphate (UGPP). These enzymes were also resolved for *L. alabamica*, including one additional enzyme: colorimetric esterase (CE). For *L. alabamica*, we scored 19 loci on 11% starch gels using the following gel-electrode buffer combinations: Buffer 34: (CE-1, CE-2, DIA-1, DIA-2, LAP-1, LAP-2, PGI-1, PGI-2, TPI-1, TPI-2, and UGPP); Buffer 8: FE-1, FE-3, FE-4, and



ME); Buffer 11: MDH, 6-PGDH-1, SKDH-2, and UGPP). For *L. crassa*, we used four gel-electrode buffer combinations to score 16 loci: Buffer 34: (DIA-1, DIA-2, LAP-1, LAP-2, PGI-1, PGI-2, TPI-1, TPI-2); Buffer 4: (6-PGDH-1 and SKDH-2); Buffer 8-: (FE-1, FE-3, FE-4, and ME); Buffer 11: (MDH and UGPP). Three additional loci were scored for *L. alabamica* that could not be resolved sufficiently for *L. crassa*. All loci were numbered sequentially, with the most anodal locus given the number one. The stain recipe for DIA is given in Cheliak and Pitel (1984), and for UGPP is given in Manchenko (1994). Recipes for all other stains and buffers are found in Soltis et al. (1983).

*Statistical Analyses*—Measures of genetic diversity were calculated for *L. alabamica* and *L. crassa* (Hamrick and Godt, 1989), and for SI and SC populations (Hedrick 2005) using GenAlEx 6.3 (Peakall and Smouse, 2005): percentage of polymorphic loci (P), mean number of alleles per locus (A) and per polymorphic locus (AP), effective number of alleles ( $A_e$ ), and observed ( $H_o$ ) and expected ( $H_e$ ) heterozygosity. Population values (Tables 1 and 2) are given subscript “p”. We report the unbiased estimator of  $H_e$  (Nei and Chesser, 1983) in all tables. Following Schoen and Brown (1991), we also calculated the coefficient of variation for mean  $H_{ep}$  of each species, and for mean  $H_{ep}$  of SI and SC populations of each species.

We compared mean population values of *L. alabamica* and *L. crassa* for each genetic diversity measure using Welch's t-tests performed in JMP 6.0 (SAS Institute, 2005) as in Mable and Adam (2007). We also performed t-tests to examine mean differences in genetic diversity between SI and SC populations of each species. In addition, we used FSTAT (Goudet, 2001) to compare mean  $H_{ep}$  values of SI and SC

populations of each species. We used 1000 permutations of the data to compute the variance around  $H_{ep}$ . Since population size was highly correlated with SI status (Tables 1 and 2), its affect on genetic diversity was not examined separately. In addition, we tested deviations from Hardy-Weinberg equilibrium at each polymorphic locus, using GENEPOP (Rousset, 2008) to calculate the fixation index ( $F$ ; Wright, 1922) and conduct Fisher's global exact tests (Guo and Thompson, 1992).

We computed Nei's genetic identity ( $I$ ) and distance ( $D$ ) values for each pair of populations (Nei, 1972) within species using GenAlEx 6.1 (Peakall and Smouse, 2005). We then used Nei's  $D$  to construct a UPGMA phenogram in PHYLIP 3.68 (Felsenstein 2005) for each species to examine genetic distance relationships between populations. In addition, we tested isolation by distance within each species using Rousset's (1997) measure of genetic distance,  $F_{ST}/(1-F_{ST})$ , and calculated by GENEPOP (Rousset, 2008). A Mantel test was used to determine if there was a significant positive correlation between genetic and log-transformed geographic distance (Mantel, 1967).

To estimate the proportion of total genetic diversity found between populations at each polymorphic locus, we calculated between-population genetic structure ( $F_{ST}$ ) of both species using AMOVA (Excoffier et al., 1992; Michalakis and Excoffier, 1996) in GenAlEx 6.1 (Peakall and Smouse, 2005). This was done for all populations of each species, as well as for SI and SC populations separately. Calculations were based on 16 and 12 polymorphic loci for *L. alabamica* and *L. crassa*, respectively.  $F_{ST}$  values were tested for significance against 9999 random permutations of the data.

We also examined genetic differentiation of *L. alabamica* and *L. crassa* populations using the clustering method of Pritchard et al. (2000) implemented in Structure 2.3.2. This program probabilistically assigns each individual to  $k$  clusters or populations, and individuals can be assigned to one or more populations as an indication of admixture. We ran the program using admixture and independent allele frequency models from  $k=1$  to 20 for *L. alabamica* and  $k=1$  to 10 for *L. crassa*, with 10 replicates at each  $k$ , and 100,000 MCMC reps after a burn-in period of 10,000. Log-likelihood values are assigned to each  $k$ , and we used the method described in the Structure manual to determine optimal  $k$  (i.e., the optimal  $k$  has the smallest ln likelihood value with the least variance between reps of the same  $k$ ). We also used the alternative method of Evanno et al. (2005), which determines  $k$  using first and second order derivatives of the  $-\ln$  probability of the data, as well as the second order derivative divided by the standard deviation. For each species' optimal  $k$ , the program Distruct (Rosenberg, 2004) was used to display the clustering results. We then compared the results from Structure to those of Instruct (Gao et al., 2007), which assumes non-random mating and was designed for species with significant self-fertilization.

Finally, Filatov and Charlesworth (1999) found evidence that balancing selection maintains DNA nucleotide polymorphism at the cytosolic PGI locus in the closely related *Leavenworthia stylosa*. Three polymorphisms conferred amino acid charge changes, although none were correlated with the allozyme mobility classes documented by Charlesworth and Yang (1998). Much lower levels of nucleotide polymorphism were observed in *L. alabamica* (Busch, 2005) and *L. crassa* (Liu et al., 1999) at this locus, but

we cannot rule out the possibility that PGI is under balancing selection. To make sure that our results were not dependent on a locus experiencing selection, we re-ran all analyses with PGI excluded. Our results did not change, so we report only analyses with all loci included.

## RESULTS

*Genetic diversity within species* — For *L. alabamica*, 16 of 19 loci were polymorphic (84.2%) in at least one population, whereas *L. crassa* had a slightly lower number, 12 of 16 loci (75.0%; Table 3). *L. alabamica* had AP=3.38, and *L. crassa* had AP=3.17. There were also differences in A (3.00 v. 2.63),  $A_e$  (1.47 v. 1.32), and  $H_e$  (0.229 v. 0.183). The species did not differ significantly in their mean population values for any measures of genetic diversity. The range of population values was larger in *L. crassa* for P, A, and AP, but smaller for  $A_e$  and  $H_e$ . Range differences are likely due to the number of populations sampled for each species. For all species-level measures, *L. alabamica* had more genetic diversity than *L. crassa*.

*Genetic diversity within populations*—We found that genetic diversity within populations depended on their SI status (Tables 1 and 2). For *L. alabamica*, populations designated by Lloyd (1965) as SC had significantly lower ( $p < 0.05$ )  $A_e$  (1.11 v. 1.38),  $H_{op}$  (0.059 v. 0.142), and  $H_{ep}$  (0.065 v. 0.206), but not P (47.37 v. 63.17), A (30.75 v. 39.17), or AP (2.24 v. 2.68) (Table 4).  $H_{ep}$  was significantly different in both the JMP (t-test) and FSTAT (permutation) analysis. In line with expectations, the coefficient of variation of mean  $H_{ep}$  was higher for SC populations than SI populations (62.37% v. 17.76%).

For *L. crassa*, the permutation analysis showed that SC populations had significantly ( $p < 0.05$ ) lower mean  $H_{ep}$ . However, SI and SC populations did not differ significantly for any genetic diversity measure in the t-test analysis, although the mean value of all measures was lower in SC populations (Table 4). It seems likely that other measures in addition to  $H_{ep}$  would have been significantly different between SI and SC populations had more *L. crassa* populations been sampled.

Within *L. alabamica*, observed genotype frequencies conformed to Hardy-Weinberg expectations in all populations for only 12.5% of polymorphic loci. There were 68 cases (62.9%) of fixation indices significantly different from zero ( $p < 0.05$ ); 62 were cases of heterozygote deficiency and six were cases of heterozygote excess. Overall,  $F_{IS}$  for *L. alabamica* was 0.290, and 0.320 and 0.285 for only SI and SC populations, respectively. Observed genotype frequencies of *L. crassa* conformed to Hardy-Weinberg expectations in all populations for only 16.7% of polymorphic loci. Fixation indices significantly differed from zero ( $p < 0.05$ ) in 28 cases (71.8%), with 25 cases of heterozygote deficiency and three cases of heterozygote excess. For *L. crassa*, overall  $F_{IS}$  was 0.364, and 0.340 and 0.410 for only SI and SC populations, respectively. These data indicate that most loci exhibit inbreeding in all populations of both species.

Nine (mean frequency=0.120) and six (mean frequency=0.193) private alleles were within five *L. alabamica* and four *L. crassa* populations, respectively. In *L. alabamica*, Hatton had four private alleles, followed by Landers (2), with Speck, StCross, and CPCC each having one private allele. *L. crassa* populations with private alleles were CR55 (2), NCP (2), CR203 (1) and Bramlett (1). Interestingly, one private

allele in CR55 is also only found in CPCC in *L. alabamica*. CPCC (Pop. 9) is an isolated *L. alabamica* population within close geographic proximity to populations of *L. crassa* (Fig. 1). The presence of this allele in one *L. alabamica* and one *L. crassa* population may suggest gene flow has occurred.

*Genetic structure and differentiation*—The proportion of total genetic variation explained by differences between populations ( $F_{ST}$ ) of *L. alabamica* was 0.450 (Table 3) and was significantly different from zero. This value drops to 0.174 and rises to 0.693 when considering only SI and SC populations, respectively. Mean genetic identity among populations of *L. alabamica* was  $0.913 \pm 0.010$ , with a range from 0.831 to 0.943 (Table 1). Landers had the lowest mean genetic identity with other *L. alabamica* populations. Pairwise population estimates of  $F_{ST}$  ranged from 0.042 (Speck and Winchell) to 0.714 (Landers and CPCC). A significant positive correlation between genetic and geographic distance was detected ( $p=0.008$ ), indicating that there is isolation by distance between *L. alabamica* populations.

For *L. crassa*,  $F_{ST}$  was 0.358 (Table 3), which was significantly different from zero. As for *L. alabamica*, this value drops to 0.235 and rises to 0.577 when considering only SI and SC populations, respectively. Mean genetic identity among populations of *L. crassa* was  $0.906 \pm 0.016$ , and ranged from 0.863-0.937 (Table 2). Quarry and Bramlett had the lowest mean genetic identity with other populations. Pairwise  $F_{ST}$  values ranged from 0.046 (CR55 and NCP, populations in closest geographic proximity) to 0.758 (Quarry and Bramlett, both of the highly SC race c15). We did not detect a significant correlation between genetic and geographic distance in *L. crassa* ( $p>0.1$ ), suggesting

only weak isolation by distance. However, this may be an artifact of the limited number of populations sampled for *L. crassa*.

We also examined population genetic differentiation using Nei's I and D, and used the D values to construct a UPGMA phenogram for each species (Fig. 2). Mean I was  $0.924 \pm 0.009$  and  $0.922 \pm 0.021$  for *L. alabamica* and *L. crassa* populations, respectively.

The Structure analysis yielded optimal  $k = 6$  and  $k = 4$  for *L. alabamica* and *L. crassa*, respectively (Fig. 3). The Evanno et al. (2005) methods did not show clear peaks for our data (results not shown), but did show the greatest rate of change in the likelihood values at  $k = 6$  and  $k = 4$ , and these results were also obtained by using the Structure manual method. In *L. alabamica* the first cluster was formed by Isbell, Winchell, and Russell, the second by Tuscumbia and CPCC, the third by Speck and CR46, the fourth by Hatton, the fifth by Landers, and the sixth by StCross. In *L. crassa* the first cluster was formed by CR203 and Bramlett, the second by CR55, the third by Quarry, and the fourth by NCP. Instruct (Gao et al., 2007) identified the same clusters at these  $k$  (results not shown).

## DISCUSSION

Inbred populations generally have less genetic diversity (Jarne and Städler, 1995; Hamrick and Godt, 1996; Nybom, 2004; Glémin et al., 2006), potentially putting populations at increased risk of extinction. Increased population genetic structure is also associated with inbreeding (Hamrick and Godt, 1996; Nybom, 2004) and that population

extinction could cause the loss of genetic variation within species. To better understand the genetic consequences of mating system change on endemic plants, we examined its population genetic effects in the cedar glade endemics *L. alabamica* and *L. crassa*. We also looked at the genetic relationship between SI and SC populations to make inferences about population history and the evolution of self-compatible populations.

The genetic consequences of mating system change in *Leavenworthia* were examined previously, but with a number of limitations. Solbrig (1972) first compared genetic diversity in SI and SC species using allozymes. He reported a weak association between self-compatibility and lower allozyme diversity. However, he used few populations and an inaccurate measure of genetic diversity (Berg and Hamrick, 1997), reporting the number of homozygous individuals versus those showing some segregation in a population rather than identifying alleles and quantifying expected genetic diversity. Solbrig and Rollins (1977) sampled more populations, but used the same measure of genetic diversity as Solbrig (1972). It is therefore difficult to interpret the results of these studies.

Charlesworth and Yang (1998) also estimated genetic diversity in SI and SC species of *Leavenworthia*, but found unexpected results. The SI *L. stylosa* and SC *L. uniflora* and *L. torulosa* had, respectively, high and low measures of heterozygosity as expected, but selfing populations of *L. alabamica* and *L. crassa* had mainly high heterozygosity (ranging from ~0.2-0.4); measures close to those of outcrossing populations (~0.43-0.47). In addition, genetic structure was unexpectedly low for *L. alabamica* and *L. crassa*. However, sample sizes were limited.



In contrast, Liu et al. (1998; 1999) found low DNA sequence diversity in selfing *L. crassa* populations at three alcohol dehydrogenase loci and one locus of phosphoglucosomerase (PgiC), respectively. Busch (2005) analyzed the PgiC locus of three populations of *L. alabamica* (one SI and two SC) and found significantly less sequence variation in the SC populations. Although they used only a few loci, the results were consistent with less genetic diversity occurring within selfing populations.

*Genetic diversity within populations*—We found less neutral genetic diversity in SC populations compared to SI populations for most measures (Table 4), a result consistent with inbreeding in SC populations. Our results differ from Charlesworth and Yang (1998) in that we found much lower expected heterozygosity in both SI and SC populations (Tables 1 and 2). This difference likely stems from the fact that we sampled more and different loci, and that we had larger sample sizes for most populations. Furthermore, our result agrees with low DNA sequence diversity in SC populations of *L. crassa* (Liu et al. 1998; 1999) and *L. alabamica* (Busch, 2005), and with Mable and Adam's (2007) study of genetic diversity in *Arabidopsis lyrata*, another mustard species with both SI and SC populations.

We found high fixation indices in both SI and SC populations, with most loci exhibiting heterozygote deficiency and only a few cases of heterozygote excess. Charlesworth and Yang (1998) also found high fixation indices in SI and SC populations of *L. alabamica* and *L. crassa*, suggesting that SI populations may experience inbreeding high enough to reduce heterozygosity. This is possible given that low levels of autogamy and/or pseudo-compatibility are documented in SI races of *L. alabamica*

and *L. crassa* (Lloyd, 1965; 1968; Busch et al., 2010). Pseudo-compatibility can fluctuate depending on environmental conditions (Levin, 1996); in some years SI populations may produce a significant number of progeny through self-fertilization.

*Genetic diversity and structure within species—L. alabamica and L. crassa* exhibited similarly high levels of genetic diversity (Table 3) and high genetic structure between populations (see  $F_{ST}$  values in Table 3 and clustering results in Fig. 3). Our estimates of genetic structure are higher than those of Charlesworth and Yang (1998) and suggest that gene flow between populations is low. Given that limestone glades are geographically disjunct, the average distance between populations was approximately 10 km (Fig. 1), and seeds of these species are gravity-dispersed, low gene flow between populations is expected. These genetic structure values also agree with those found in other annual species with gravity-dispersal and selfing (Hamrick and Godt, 1996). However, species-level genetic diversity for both *L. alabamica* and *L. crassa* was higher than most plant species with similar life-history traits. It seems likely that the high levels of genetic diversity observed are due to the maintenance of allelic variation in SI populations, variation that may then spread to SC populations through occasional gene flow events.

*Genetic relationships between populations and the evolution of self-compatibility—*Our evidence suggests that there may have been multiple origins of self-compatibility in *L. alabamica* and *L. crassa*. In Fig. 2A, the *L. alabamica* selfing populations Tuscumbia, Russell, and CPCC clustered together and Landers was the most genetically distant from all populations. In the Structure analysis (Fig. 3A),

Tuscumbia and CPCC formed a cluster, whereas Russell was more closely allied to SI populations (Isbell, Speck, Winchell) and Landers formed a distinct cluster. A large geographic distance separates Tuscumbia and CPCC (Fig. 1), making their clustering unlikely to result from current gene flow. The two SC populations sampled in *L. crassa* were not genetically similar (Fig. 2B, 3B). These results are consistent with multiple origins of self-compatibility in these species. Multiple origins of self-compatibility have also been found in *Arabidopsis lyrata* (Hoebe et al., 2009). However, the observed genetic distance between these populations may be due to local drift and/or selection post-establishment and does not reflect population phylogeny. Since we cannot determine ancestral relationships from our allozyme dataset, further work using markers suited to phylogeographic questions, such as cpDNA (Avice, 2000), is needed to truly test whether self-compatibility has evolved repeatedly within these two species.

*Implications for conservation*—In both *L. alabamica* and *L. crassa*, SI populations had high genetic diversity and SC populations low. Also, populations were highly genetically structured and likely experience infrequent gene flow. However, private alleles were present in some populations, two of which were SC, demonstrating that individual populations contain unique genetic variation. In addition, prior work has shown that SI and SC populations differ substantially in floral morphology (Lloyd, 1965; Lyons and Antonovics, 1991; Busch, 2005), suggesting that there are at least some quantitative genetic differences between populations with different mating systems. Thus, the overall genetic diversity of *L. alabamica* and *L. crassa* depends upon the conservation of multiple populations of both mating types, and any efforts to conserve *L.*

*alabamica* or *L. crassa* should consider these population genetic factors when designing a conservation strategy.

#### ACKNOWLEDGMENTS

We thank the Bramlett family and The Nature Conservancy of Alabama for access to property, J. Busch, T. Haselkorn, S. Scott, J. Estill, L. Mitchell, and M. Brown for help with seed collections, E. Hedgepeth and J. Wolf for aid with gel electrophoresis, and G. Schneider for map-making assistance. We also thank two anonymous reviewers for comments on the manuscript. Part of this work was carried out by using the resources of the Computational Biology Service Unit from Cornell University, which is partially funded by Microsoft Corporation. A Ruth L. Kirschstein National Research Service Award from the National Institutes of Health to V. A. K. funded this work.

Conflict of Interest: The authors declare no conflict of interest.

#### REFERENCES

- Avise JC (2000). *Phylogeography*. Harvard University Press: Cambridge.
- Baskin JM, Webb DH, Baskin CC (1995). A floristic plant ecology study of the limestone glades of northern Alabama. *Bull Torrey Bot Club* **122**: 226-242.
- Bateman AJ (1955). Self-incompatibility systems in angiosperms III. Cruciferae. *Heredity* **9**: 53-68.
- Beck JB, Al-Shehbaz IA, Schaal BA (2006). *Leavenworthia* (Brassicaceae) revisited: testing classic systematic and mating system hypotheses. *Syst Bot* **31**: 151-159.
- Berg EE, Hamrick JL (1997). Quantification of genetic diversity at allozyme loci. *Can J For Res* **27**:415-424.

- Busch JW (2005). The evolution of self-compatibility in geographically peripheral populations of *Leavenworthia alabamica* (Brassicaceae). *Am J Bot* **92**: 1503-1512.
- Busch JW, Sharma J, Schoen DJ (2008). Molecular characterization of *Lal2*, an SRK-like gene linked to the S-locus in the wild mustard *Leavenworthia alabamica*. *Genetics* **178**: 2055-2067.
- Busch JW, Joly S, Schoen DJ (2010). Does mate limitation in self-incompatible species promote the evolution of selfing? The case of *Leavenworthia alabamica*. *Evolution*, in press.
- Charlesworth D, Charlesworth B (1995). Quantitative genetics in plants: the effect of the breeding system on genetic variability. *Evolution* **49**: 911-920.
- Charlesworth DB, Yang Z (1998). Allozyme diversity in *Leavenworthia* populations with different inbreeding levels. *Heredity* **81**: 453-461.
- Cheliak WM, Pitel JA (1984). Techniques for starch gel electrophoresis of enzymes from forest tree species. Information report P1-X-42. Petawawa National Forestry Institute, Canadian Forestry Service, Agriculture, Chalk River, Ontario.
- Cole CT (2003). Genetic variation in rare and common plants. *Annu Rev Ecol Evol S* **34**: 213-237.
- Evanno G, Regnaut S, Goudet J (2005). Detecting the number of clusters of individuals using the software STRUCTURE: a simulation study. *Mol Ecol* **14**: 2611-2620.
- Excoffier L, Smouse PE, Quattro JM (1992). Analysis of molecular variance inferred from metric distances among DNA haplotypes: application to human mitochondrial DNA restriction data. *Genetics* **131**: 479-491.
- Felsenstein J (2005). PHYLIP (Phylogeny Inference Package) version 3.68. Distributed by the author. Department of Genome Sciences, University of Washington, Seattle.
- Fenster CB, Ritland K (1992). Chloroplast DNA and isozyme diversity in two *Mimulus* species (Scrophulariaceae) with contrasting breeding systems. *Am J Bot* **79**: 1440-1447.
- Filatov DA, Charlesworth D (1999). DNA polymorphism, haplotype structure and balancing selection in the *Leavenworthia* PgiC locus. *Genetics* **153**: 1423-1434.

- Fisher RA (1930). *The Genetical Theory of Natural Selection*. Clarendon Press: Oxford.
- Gao H, Williamson S, Bustamante CD (2007). A Markov Chain Monte Carlo approach for joint Inference of population structure and inbreeding rates from multilocus genotype data. *Genetics* **176**: 1635-1651.
- Glémin S, Bazin E, Charlesworth D (2006). Impact of mating systems on patterns of sequence polymorphism in flowering plants. *P Roy Soc B-Biol Sci* **273**: 3011-3019.
- Goudet J (2001). FSTAT, a program to estimate and test gene diversities and fixation indices (version 2.9.3). Available from <http://www.unil.ch/izea/software/fstat.html>.
- Guo SW, Thompson EA (1992). Performing the exact test of Hardy-Weinberg proportions for multiple alleles. *Biometrics* **48**: 361-372.
- Hamrick JL, Godt MJW (1989). Allozyme diversity in plant species. Pp. 43-63 in *Plant Population Genetics, Breeding and Genetic Resources*. A. H. D. Brown, M. T. Clegg, A. L. Kahler, and B. S. Weir. Sinauer: Massachusetts.
- Hamrick JL, Godt MJW (1996). Effects of life history traits on genetic diversity in plant species. *Philos T Roy Soc B* **351**: 1291-1298.
- Hedrick PW (2005). *Genetics of Populations*. Jones and Bartlett: Boston.
- Hoebe PN, Stift M, Tedder A, Mable BK (2009). Multiple losses of self-incompatibility in North-American *Arabidopsis lyrata*?: phylogeographic context and population genetic consequences. *Mol Ecol* **18**: 4924-4939.
- Ingvarsson PK (2002). A metapopulation perspective on genetic diversity and differentiation in partially self-fertilizing plants. *Evolution* **56**: 2368-2373.
- Jarne P, Auld JR (2006). Animals mix it up too: the distribution of self-fertilization among hermaphroditic animals. *Evolution* **60**: 1816-1824.
- Jarne P, Städler T (1995). Population genetic structure and mating system evolution in freshwater pulmonates. *Cell Mol Life Sci* **51**: 482-497.
- Levin DA (1996). The evolutionary significance of pseudo-self-fertility. *Am Nat* **148**: 321-332.
- Liu F, Zhang L, Charlesworth DB (1998). Genetic diversity in *Leavenworthia* populations with different inbreeding levels. *P Roy Soc B-Biol Sci* **265**: 293-301.

- Liu F, Charlesworth DB, Kreitman M (1999). The effect of mating system differences on nucleotide diversity at the phosphoglucose isomerase locus in the plant genus *Leavenworthia*. *Genetics* **151**: 343-357.
- Lloyd DG (1965). Evolution of self-compatibility and racial differentiation in *Leavenworthia* (Cruciferae). *Contrib Gray Herb Harv* **195**: 3-134.
- Lloyd DG (1967). The genetics of self-incompatibility in *Leavenworthia crassa* Rollins (Cruciferae). *Genetica* **38**: 227-242.
- Lloyd DG (1968). Pollen tube growth and seed set in self-incompatible and self-compatible *Leavenworthia* (Cruciferae) populations. *New Phytol* **67**: 179-195.
- Lyons EE, Antonovics J (1991). Breeding system evolution in *Leavenworthia*: breeding system variation and reproductive success in natural populations of *Leavenworthia crassa* (Cruciferae). *Am J Bot* **78**: 270-287.
- Mable BK, Adam A (2007). Patterns of genetic diversity in outcrossing and selfing populations of *Arabidopsis lyrata*. *Mol Ecol* **16**: 3565-3580.
- Manchenko GP (1994). *Handbook of Detection of Enzymes on Electrophoretic Gels*. CRC Press: Ann Arbor.
- Mantel N (1967). The detection of disease clustering and a generalized regression approach. *Cancer Res* **27**: 209-220.
- Michalakis Y, Excoffier L (1996). A generic estimation of population subdivision using distances between alleles with special reference for microsatellite loci. *Genetics* **142**: 1061-1064.
- Nei M (1972). Genetic distance between populations. *Am Nat* **106**: 283-292.
- Nei M, Chesser RK (1983). Estimation of fixation indices and gene diversities. *Ann Hum Genet* **47**: 253-259.
- Nybom H (2004). Comparison of different nuclear DNA markers for estimating intraspecific genetic diversity in plants. *Mol Ecol* **13**: 1143-1155.
- Peakall R, Smouse PE (2006). GENALEX 6: genetic analysis in Excel. Population genetic software for teaching and research. *Mol Ecol Notes* **6**: 288-295.
- Pollak E (1987). On the theory of partially inbreeding finite populations. I. Partial selfing. *Genetics* **117**: 353-360.

- Pritchard JK, Stephens M, Donnelly P (2000). Inference of population structure using multilocus genotype data. *Genetics* **155**: 945-959.
- Rollins RC (1963). The evolution and systematics of *Leavenworthia* (Cruciferae). *Contrib Gray Herb Harv* **192**: 3-98.
- Rosenberg NA (2004). Distruct: a program for the graphical display of population structure. *Mol Ecol Notes* **4**: 137-138.
- Rousset F (1997). Genetic differentiation and estimation of gene flow from *F*-statistics under isolation by distance. *Genetics* **145**: 1219-1228.
- Rousset F (2008). GENEPOP'007: a complete re-implementation of the GENEPOP software for Windows and Linux. *Mol Ecol Resour* **8**: 103-106.
- SAS Institute (2005). JMP version 6.0.
- Schoen DJ, Brown AHD (1991). Intraspecific variation in population gene diversity and effective population size correlates with the mating system in plants. *Proc Natl Acad Sci USA* **88**: 4494-4497.
- Solbrig OT (1972). Breeding system and genetic variation in *Leavenworthia*. *Evolution* **26**: 155-160.
- Solbrig OT, Rollins RC (1977). Evolution of autogamy in species of the mustard genus *Leavenworthia*. *Evolution* **31**: 265-281.
- Soltis DE, Haufler CH, Darrow DC, Gastony GJ (1983). Starch gel electrophoresis of ferns: a compilation of grinding buffers, gel and electrode buffers, and staining schedules. *Am Fern J* **73**: 9-27.
- Stebbins GL (1970) Adaptive radiation of reproductive characteristics in angiosperms. I. Pollination mechanisms. *Annu Rev Ecol Evol S* **1**: 307-326.
- Wendel JF, Parks CR (1982). Genetic control of isozyme variation in *Camellia japonica* L. *J Hered* **73**: 197-204.
- Williams CF, Ruvinsky J, Scott PE, Hews DK (2001). Pollination, breeding system, and genetic structure in two sympatric *Delphinium* (Ranunculaceae) species. *Am J Bot* **88**: 1623-1633.
- Wright S (1922). Coefficient of inbreeding and relationships. *Am Nat* **56**: 330-338.



Wright S (1951). The genetical structure of populations. *Ann Eugen* **15**: 323-354.

Wright S (1965). The interpretation of population structure by F-statistics with special regard to systems of mating. *Evolution* **19**: 395-420.

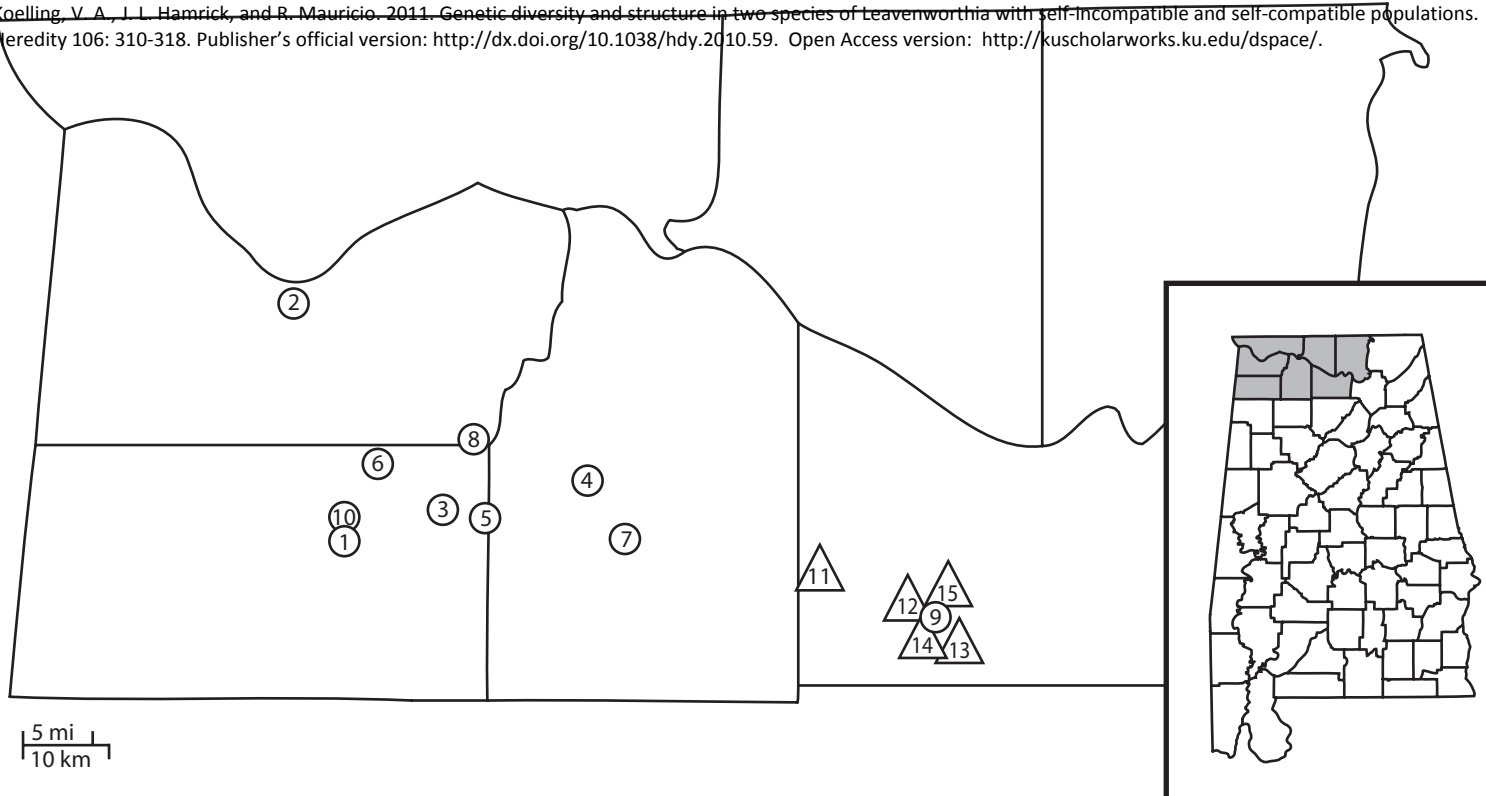
## TITLES AND LEGENDS TO FIGURES

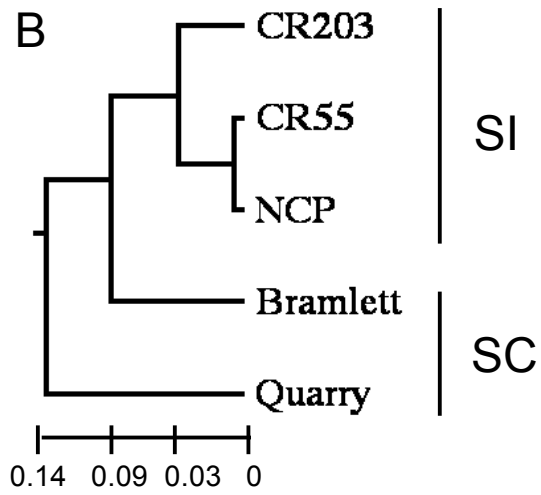
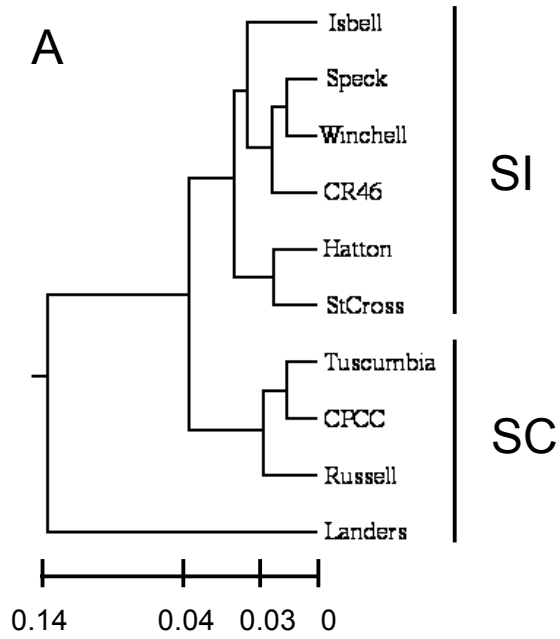
Figure 1: Geographic distribution of sampled populations of *L. alabamica* and *L. crassa* within northwestern Alabama. *L. alabamica* populations (circles) are numbered 1-10: Isbell, Tuscumbia, Speck, Hatton, Winchell, Russell, Landers, StCross, CPCC, and CR46, respectively. *L. crassa* populations (triangles) are numbered 11-15: CR203, CR55, Quarry, Bramlett, and NCP, respectively. The inset (lower right) shows the location of the map area (shaded) within Alabama. *L. alabamica*'s range extends from population 2 to 9, and *L. crassa*'s from population 11 to 13.

Figure 2: UPGMA phenograms of 10 *L. alabamica* and 5 *L. crassa* populations based on Nei's (1972) genetic distance values: (A) *L. alabamica* populations, (B) *L. crassa* populations. Branch lengths represent genetic distances (see scale). SI=self-incompatible, SC=self-compatible.

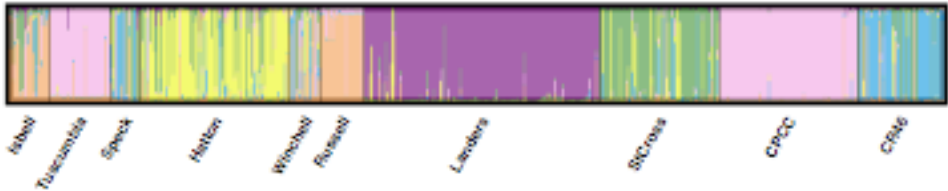
Figure 3: Bar plot of assignment of individual genotypes to each of  $k$  subpopulations using the clustering method of the program Structure: (A) *L. alabamica* individuals were assigned to 6 subpopulations, (B) *L. crassa* individuals were assigned to 4 subpopulations. The different colors in each plot represent the  $k$  subpopulations. Physical populations sampled for each species are also shown.

Koelling, V. A., J. L. Hamrick, and R. Mauricio. 2011. Genetic diversity and structure in two species of *Leavenworthia* with self-incompatible and self-compatible populations. *Heredity* 106: 310-318. Publisher's official version: <http://dx.doi.org/10.1038/hdy.2010.59>. Open Access version: <http://kuscholarworks.ku.edu/dspace/>.





A



B

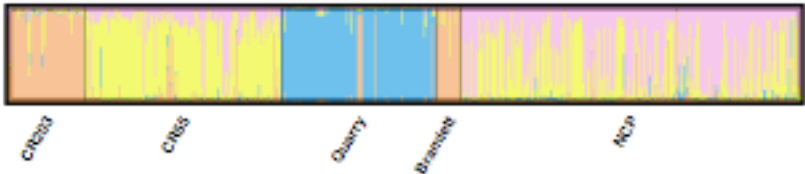


Table 1: Genetic diversity for *L. alabamica* populations. Populations are ordered by size and self-incompatibility status. Standard errors are shown where available.  $P_p$  = percent polymorphic loci; Total  $A_p$  = total number of alleles per population (including monomorphic loci);  $AP_p$  = mean number of alleles per polymorphic locus;  $A_{ep}$  = mean effective number of alleles per locus;  $H_{op}$  = observed heterozygosity;  $H_{ep}$  = expected heterozygosity (genetic diversity);  $I$  = Nei's genetic identity.

Pop.	N	Pop. Size	SI Status	Lloyd's Race <sup>§</sup>	$P_p$ (%)	Total $A_p$	$AP_p$	$A_{ep}$	$H_{op}$	$H_{ep}$	Mean $I$
Isbell	30	L	SI	a1	57.9	40	2.91	1.45 ± .121	0.182 ± .053	0.234 ± .056	0.9295
Speck	23	L	SI	a1	68.4	40	2.62	1.45 ± .116	0.145 ± .046	0.246 ± .051	0.938
Hatton	112	L	SI	a1	68.4	42	2.77	1.34 ± .129	0.114 ± .041	0.167 ± .053	0.9191
Winchell	24	L	SI	a1	57.9	38	2.73	1.42 ± .124	0.137 ± .042	0.222 ± .054	0.9432
StCross	90	L	SI	a1	63.2	37	2.5	1.24 ± .070	0.110 ± .031	0.156 ± .039	0.9206
CR46	65	S	SI	a1	63.2	38	2.58	1.38 ± .048	0.165 ± .050	0.214 ± .051	0.9291
Landers	177	L	SC	a2	63.2	40	2.75	1.20 ± .078	0.065 ± .022	0.125 ± .039	0.8309
CPCC	104	S	SC	a3	52.6	31	2.2	1.07 ± .056	0.055 ± .050	0.038 ± .027	0.909
Tuscumbia	46	S	SC	Tuscumbia	42.1	27	2	1.07 ± .052	0.057 ± .051	0.041 ± .026	0.9114
Russell	32	S	SC	Russellville	31.6	25	2	1.09 ± .053	0.059 ± .049	0.057 ± .029	0.9032

§ Lloyd, 1965.

Table 2: Genetic diversity statistics for *L. crassa* populations. Populations are ordered by size and self-incompatibility status. Standard errors are shown where available.  $P_p$  = percent polymorphic loci; Total  $A_p$  = total number of alleles per population (including monomorphic loci);  $AP_p$  = mean number of alleles per polymorphic locus;  $A_{ep}$  = mean effective number of alleles per locus;  $H_{op}$  = observed heterozygosity;  $H_{ep}$  = expected heterozygosity (genetic diversity);  $I$  = Nei's genetic identity.

Pop.	N	Pop. Size	SI Status	Lloyd's Races <sup>§</sup>	$P_p$ (%)	Total $A_p$	$AP_p$	$A_{ep}$	$H_{op}$	$H_{ep}$	Mean $I$
NCP	255	L	SI	c3	68.7	37	2.91	1.23 ± .090	0.102 ± .035	0.150 ± .047	0.9346
CR203	57	S	SI	c1	62.5	31	2.5	1.42 ± .114	0.158 ± .058	0.229 ± .058	0.9224
CR55	148	S	SC	c5	62.5	32	2.6	1.16 ± .063	0.075 ± .027	0.109 ± .036	0.9366
Bramlett	19	S	SC	c15	25	21	2.25	1.09 ± .057	0.010 ± .005	0.061 ± .035	0.8736
Quarry	116	S	SC	c15	25	22	2.5	1.14 ± .080	0.039 ± .031	0.082 ± .042	0.8628

§ Lloyd, 1965.

Table 3: Comparisons of species-level diversity and genetic structure for *L. alabamica* and *L. crassa*. Standard errors are shown where available. P = percent of polymorphic loci; AP = mean number of alleles per polymorphic locus; A = mean number of alleles per locus (including monomorphic loci);  $A_e$  = mean effective number of alleles per locus;  $H_e$  = mean expected heterozygosity (gene diversity);  $F_{ST}$  = among population genetic structure.

	P (%)	AP	A	$A_e$	$H_e$	$F_{ST}$
<i>L. alabamica</i>	84.2	3.38	3	1.47	0.229	0.45
Mean Population Values	56.8 ± 3.75	2.51 ± .104	1.88 ± .070	1.27 ± .050	0.150 ± .015	-
Range	31.6-68.4	2.00-2.91	1.32-2.21	1.07-1.45	0.038-0.246	-
<i>L. crassa</i>	75	3.17	2.63	1.32	0.183	0.36
Mean Population Values	48.7 ± 9.76	2.55 ± .106	1.79 ± .106	1.21 ± .057	0.126 ± .020	-
Range	25.0-68.7	2.25-2.91	1.31-2.31	1.09-1.42	0.061-0.229	-



Table 4: Comparison of mean genetic diversity statistics for self-incompatible (SI) and self-compatible (SC) populations of *L. alabamica* and *L. crassa*. Means are shown with standard errors. The number of populations (N) is shown in the first column.  $P_p$  = percent polymorphic loci; Total  $A_p$  = total number of alleles per populations (including monomorphic loci);  $AP_p$  = mean number of alleles per polymorphic locus;  $A_{ep}$  = mean effective number of alleles per locus;  $H_{op}$  = observed heterozygosity;  $H_{ep}$  = expected heterozygosity (genetic diversity).

	N	$P_p$ (%)	Total $A_p$	$AP_p$	$A_{ep}$	$H_{op}$	$H_{ep}$
<i>L. alabamica</i>							
SI	6	63.17 ± 1.92	39.17 ± .749	2.68 ± .060	1.38 ± .033	0.142 ± .011	0.206 ± .015
SC	4	47.37 ± 6.80	30.75 ± 3.31	2.24 ± .177	1.11 ± .062	0.059 ± .002	0.065 ± .020
<i>L. crassa</i>							
SI	2	65.6 ± 3.10	34.00 ± 3.00	2.70 ± .205	1.32 ± .095	0.173 ± .054	0.189 ± .039
SC	3	37.5 ± 12.50	25.00 ± 3.51	2.45 ± .104	1.13 ± .021	0.055 ± .043	0.084 ± .014