




Article

# The Meta-Position of Phe<sup>4</sup> in Leu-Enkephalin Regulates Potency, Selectivity, Functional Activity, and Signaling Bias at the Delta and Mu Opioid Receptors

Robert J. Cassell <sup>1,†</sup>, Krishna K. Sharma <sup>2,†</sup> , Hongyu Su <sup>1</sup>, Benjamin R. Cummins <sup>3</sup>, Haoyue Cui <sup>4</sup>, Kendall L. Mores <sup>1</sup>, Arryn T. Blaine <sup>1</sup>, Ryan A. Altman <sup>2,\*</sup>  and Richard M. van Rijn <sup>1,5,6,\*</sup> 

<sup>1</sup> Department of Medicinal Chemistry and Molecular Pharmacology, College of Pharmacy, Purdue University, West Lafayette, IN 47907, USA; rcassell@purdue.edu (R.J.C.); Su147@purdue.edu (H.S.); kmores@purdue.edu (K.L.M.); harri374@purdue.edu (A.T.B.)

<sup>2</sup> Department of Medicinal Chemistry, The University of Kansas, Lawrence, KS 66045, USA; sharma.979@osu.edu

<sup>3</sup> Department of Chemistry, Purdue University, West Lafayette, IN 47907, USA; bcummins96@gmail.com

<sup>4</sup> College of Wuya, Shenyang Pharmaceutical University, Shenyang 110016, China; Cuihy1@shanghaitech.edu.cn

<sup>5</sup> Purdue Institute for Drug Discovery, Purdue University, West Lafayette, IN 47907, USA

<sup>6</sup> Purdue Institute for Integrative Neuroscience, Purdue University, West Lafayette, IN 47907, USA

\* Correspondence: raaltman@ku.edu (R.A.A.); rvanrijn@purdue.edu (R.M.v.R.)

† These authors contributed equally to this work.

Academic Editors: Mariana Spetea and Helmut Schmidhammer

Received: 20 November 2019; Accepted: 10 December 2019; Published: 12 December 2019

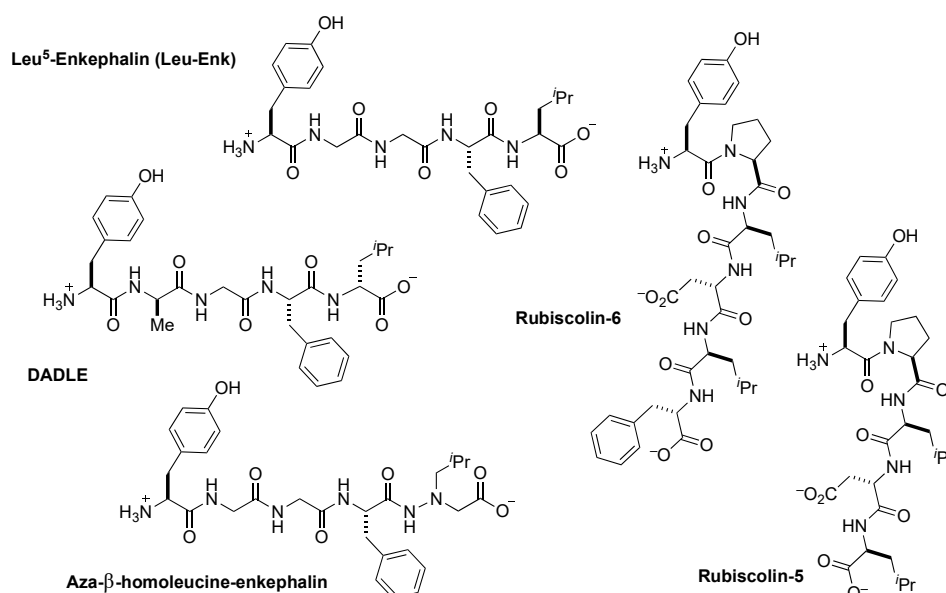


**Abstract:** As tool compounds to study cardiac ischemia, the endogenous  $\delta$ -opioid receptors ( $\delta$ OR) agonist Leu<sup>5</sup>-enkephalin and the more metabolically stable synthetic peptide (D-Ala<sup>2</sup>, D-Leu<sup>5</sup>)-enkephalin are frequently employed. However, both peptides have similar pharmacological profiles that restrict detailed investigation of the cellular mechanism of the  $\delta$ OR's protective role during ischemic events. Thus, a need remains for  $\delta$ OR peptides with improved selectivity and unique signaling properties for investigating the specific roles for  $\delta$ OR signaling in cardiac ischemia. To this end, we explored substitution at the Phe<sup>4</sup> position of Leu<sup>5</sup>-enkephalin for its ability to modulate receptor function and selectivity. Peptides were assessed for their affinity to bind to  $\delta$ ORs and  $\mu$ -opioid receptors ( $\mu$ ORs) and potency to inhibit cAMP signaling and to recruit  $\beta$ -arrestin 2. Additionally, peptide stability was measured in rat plasma. Substitution of the meta-position of Phe<sup>4</sup> of Leu<sup>5</sup>-enkephalin provided high-affinity ligands with varying levels of selectivity and bias at both the  $\delta$ OR and  $\mu$ OR and improved peptide stability, while substitution with picoline derivatives produced lower-affinity ligands with G protein biases at both receptors. Overall, these favorable substitutions at the meta-position of Phe<sup>4</sup> may be combined with other modifications to Leu<sup>5</sup>-enkephalin to deliver improved agonists with finely tuned potency, selectivity, bias and drug-like properties.

**Keywords:** Leu-enkephalin; beta-arrestin; mu opioid receptor; delta opioid receptor; biased signaling; DADLE; ischemia; plasma stability

## 1. Introduction

Leu<sup>5</sup>-enkephalin (Tyr<sup>1</sup>-Gly<sup>2</sup>-Gly<sup>3</sup>-Phe<sup>4</sup>-Leu<sup>5</sup>, Figure 1) is an endogenous opioid peptide produced in vertebrate species including rodents, primates and humans [1–4] that results from the metabolism of proenkephalin or dynorphin [5]. Pharmacologically, Leu<sup>5</sup>-enkephalin agonizes the  $\delta$  opioid receptor ( $\delta$ OR) with moderate selectivity over the  $\mu$  opioid receptor ( $\mu$ OR), but does not significantly interact with the  $\kappa$  opioid receptor [6]. As a neurotransmitter in pain circuits, Leu<sup>5</sup>-enkephalin possesses antinociceptive properties [7], whereas peripherally, the peptide demonstrates cardiovascular effects [8]. Over the last two decades, improved pharmacological characterization of opioid pathways has revealed that activation of an opioid receptor can trigger two distinct pathways,  $\beta$ -arrestin-dependent or  $\beta$ -arrestin-independent (i.e., G protein-mediated) and that these pathways differentially modulate antinociception and side effect profiles [9]. Despite the increasing number of studies that implicate  $\delta$ OR mediated  $\beta$ -arrestin recruitment with various (patho)physiological effects, such as tolerance [10], alcohol intake [11,12] and  $\delta$ OR agonist-induced seizures [10], the role of  $\beta$ -arrestin recruitment towards  $\delta$ OR-induced cardioprotection remains unclear.



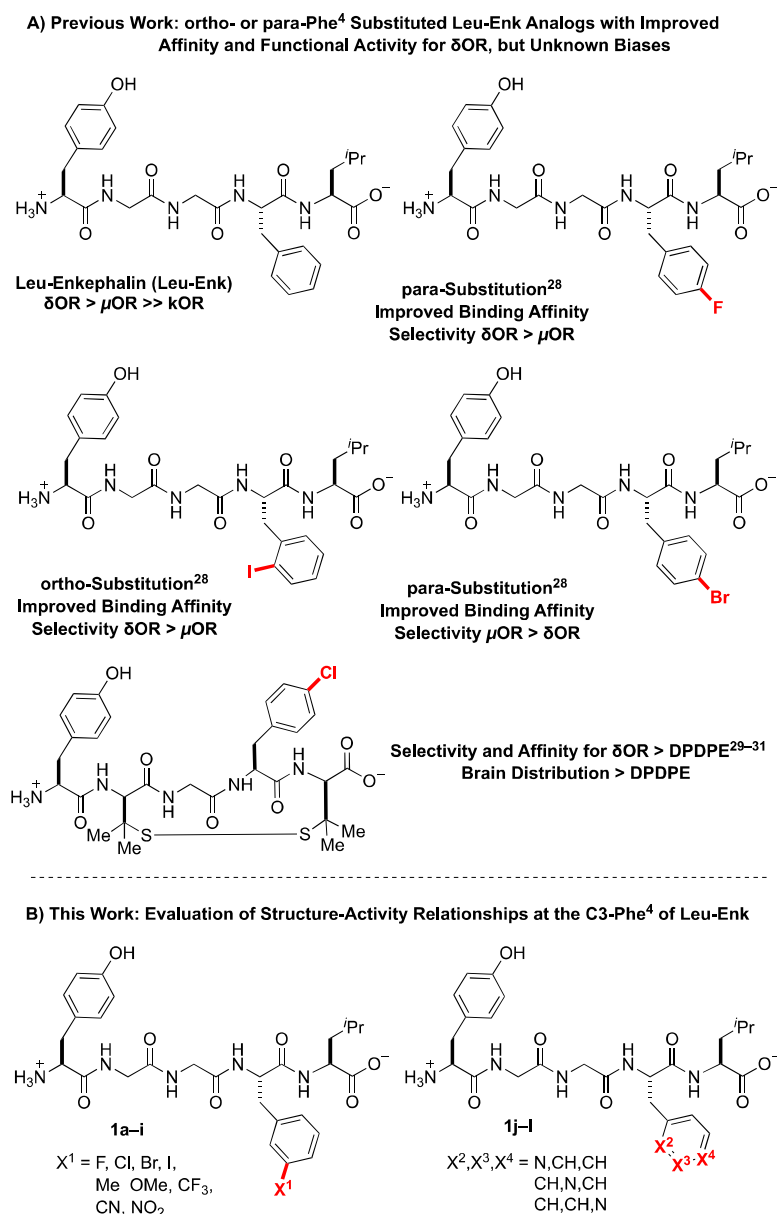
**Figure 1.** Overview of unbiased (Leu<sup>5</sup>-enkephalin and DADLE) and biased (Aza- $\beta$ -Homoleucine-Enkephalin, Rubiscolin-5 and -6)  $\delta$ OR peptides.

From a translational perspective, peptide-based probes provide an ideal tool for studying the cardioprotective effects of the  $\delta$ OR, given their low brain penetration. While numerous enkephalin-like peptides have been synthesized that interact with excellent potency and selectivity for  $\delta$ ORs and  $\mu$ ORs [13], a majority of studies [14] investigating  $\delta$ OR involvement in ischemia have utilized the synthetic peptide D-Ala<sup>2</sup>, D-Leu<sup>5</sup>-enkephalin (DADLE, Figure 1) [15,16], because DADLE possesses improved proteolytic stability and improved selectivity for  $\delta$ ORs over  $\mu$ ORs relative to Leu<sup>5</sup>-enkephalin [6,17]. However, DADLE's discovery in 1977 [18], predated identification of  $\beta$ -arrestin as a modulator of opioid signaling [14,19–21]. With the use of contemporary cellular assays it is now apparent that DADLE pharmacologically signals similarly to Leu<sup>5</sup>-enkephalin, though it recruits  $\beta$ -arrestin 2 (arrestin 3) slightly more efficaciously. Given the similarities between DADLE and Leu<sup>5</sup>-enkephalin, it is unclear to what degree  $\beta$ -arrestin recruitment contributes to or detracts from these peptides' *in vivo* cardioprotective efficacy, and new analogs with distinct pharmacological profiles are necessary to probe these contributions.

To better investigate the role of  $\delta$ OR-mediated  $\beta$ -arrestin signaling in ischemic protection, the development of  $\delta$ OR selective agonists that have either low, intermediate or high  $\beta$ -arrestin is

desired; however, reports of  $\delta$ OR selective peptide-based biased ligands remain limited. Recently, the naturally occurring peptides rubiscolin-5 and -6 (Figure 1) were classified as G protein-biased ( $\beta$ -arrestin 2 efficacy = 15% and 20%, respectively;  $\delta$ OR bias factor = 2.0)  $\delta$ OR selective peptides, albeit with only micromolar potencies [22]. While a number of synthetic peptides display nanomolar potencies at  $\delta$ ORs, such as aza- $\beta$ -homoleucine-enkephalin ( $\beta$ -arrestin 2 efficacy = 64%;  $\delta$ OR bias factor = 5.2) [23] and Dmt-Tic analogs [24], these peptides all recruit  $\beta$ -arrestin 2 far more efficaciously than the rubiscolins (UFP-512: cAMP potency 0.4 nM,  $\beta$ -arrestin 2 potency = 20 nM, efficacy = 60%) [23–25]. Additionally, these latter biased compounds, including aza- $\beta$ -homoleucine-enkephalin and Dmt-Tic-Gly-NH-Ph, have at best 10-fold selectivity for  $\delta$ ORs over  $\mu$ ORs and actually super-recruit  $\beta$ -arrestin 2 at  $\mu$ OR [23,24], which is likely to cause adverse, undesired in vivo effects [26,27]. As such, our goal was to identify novel and potent  $\delta$ OR peptide agonists with varying degrees of  $\beta$ -arrestin recruitment efficacy, and that importantly have improved  $\delta$ OR selectivity over  $\mu$ OR while limiting  $\beta$ -arrestin recruitment at  $\mu$ OR.

A collection of previously published structure activity relationship studies on Leu<sup>5</sup>-enkephalin directed us to Phe<sup>4</sup> as a position that can modulate  $\delta$ OR and  $\mu$ OR potency and selectivity (Figure 2A) [28]. Specifically, ortho and para substitutions on Phe<sup>4</sup> can modulate binding affinity and selectivity between opioid receptors [28], and halogenation of the para-position of Leu<sup>5</sup>-enkephalin and endomorphin 1 in particular appears to enhance  $\delta$ OR affinity while reducing  $\mu$ OR affinity [28]. Corroborating research has further shown that halogenation of the para position of Phe<sup>4</sup> of [D-Pen<sup>2</sup>,D-Pen<sup>5</sup>]enkephalin (DPDPE) enhanced  $\delta$ OR selectivity, potency, peptide stability, central nervous system (CNS) distribution, and antinociceptive potency compared to unsubstituted DPDPE [29–31]. Thus, halogenation at Phe<sup>4</sup> may provide Leu<sup>5</sup>-enkephalin derivatives that can be used to study not only cardiac but also cerebral ischemia [32,33]. We herein report structure-activity-relationship trends at the meta-position of Phe<sup>4</sup> of Leu<sup>5</sup>-enkephalin (Figure 2B), demonstrating that substitution at this position variously regulates  $\delta$ OR and  $\mu$ OR affinity and G-protein activity, enables the fine-tuning of  $\beta$ -arrestin 2 recruitment to both  $\delta$ OR and  $\mu$ OR, and further increases the plasma stability of the derived peptides. Combined, these features provide a clear direction for designing the next-generation of Leu<sup>5</sup>-enkephalin analogs with well-defined biases and improved stabilities.



**Figure 2.** Substituents of Phe<sup>4</sup> of Leu<sup>5</sup>-enkephalin Affect Pharmacodynamic, Stability, and Distribution Properties.

## 2. Results and Discussion

### 2.1. Design Considerations

To probe the meta position of Phe<sup>4</sup>, we initially considered known structure-activity-relationship trends at the ortho and para positions of this residue. Considering that halogenated substituents at these positions perturbed binding affinity,  $\delta$ OR selectivity, and stability properties of the Leu<sup>5</sup>-enkephalin [28], we initially hypothesized that meta-halogenated analogs might similarly perturb the parent scaffold (Figure 3A, **1a–1d**). An additional set of analogs bearing electron-donating (**1e–1f**) and -withdrawing groups (**1g–1i**) would further probe interactions at this site, including the electronic character of the Phe<sup>4</sup> ring. Finally, pyridine analogs (**1j–1l**) would present H-bond accepting contacts about the ring, as well as provide analogs that present dipoles at similar vectors as to previously successful halogenated substituents.

## A) Leu-Enk Analogs Prepared

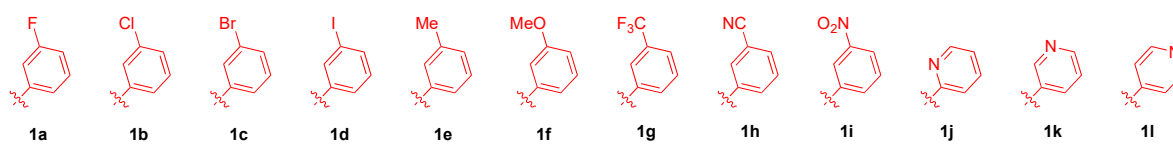
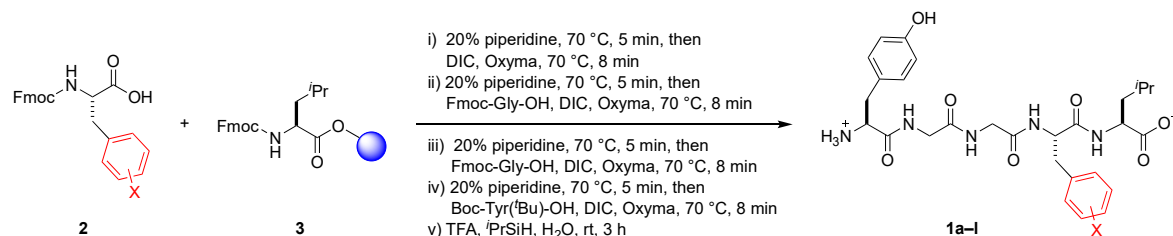
B) Synthetic Route to Phe<sup>4</sup>-Substituted Leu-Enk Analogues

Figure 3. Peptide Synthesis of Phe<sup>4</sup>-Substituted Analogs of Leu<sup>5</sup>-enkephalin.

## 2.2. Solid Phase Synthesis of Peptides

All peptides were synthesized using a rapid solid phase peptide synthesis protocol on an automated peptide synthesizer using an Fmoc protection strategy [34,35] and *N,N'*-diisopropylcarbodiimide and oxyma as the coupling reagents (Figure 3B). Fmoc-Leu-Wang resin was utilized as a starting template for this synthetic protocol. All coupling steps and Fmoc-deprotection steps were carried out at 70 °C under an atmosphere of N<sub>2</sub>. Cleavage from the resin was performed using TFA/triisopropylsilane/H<sub>2</sub>O. Purification of the synthesized peptides was performed by reverse-phase high performance liquid chromatography (RP-HPLC), and analysis of purity was performed using ultra-performance liquid chromatography (UPLC). All desired peptides were obtained in ≥95% purity before submitting for pharmacological evaluation.

## 2.3. Pharmacological Characterization

To characterize our substituted analogs, we assessed binding affinity by competition radioligand binding, G protein potency and efficacy using a cAMP GloSensor assay and β-arrestin 2 recruitment via PathHunter assays at both the δOR and μOR. Using Leu<sup>5</sup>-enkephalin as well as DAMGO (for μOR), as reference compounds, substitution of the meta position of Phe<sup>4</sup> (1a–1i) generally increased binding affinity for the δOR (Table 1, *K*<sub>i</sub> = 0.023–0.93 nM; Leu<sup>5</sup>-enkephalin = 1.26 nM) and μOR (*K*<sub>i</sub> = 0.059–0.98 nM; Leu<sup>5</sup>-enkephalin = 1.7 nM). The improved binding affinity correlated with improved functional activation of the G protein pathway at both the δOR and μOR, while providing near-full agonist activity at the δOR (Table S1, 92–100% efficacy) relative to Leu<sup>5</sup>-enkephalin, and mostly near-full agonist activities at the μOR (Table S1, 85–105% efficacy; Leu<sup>5</sup>-enkephalin = 100% efficacy vs. DAMGO).

At the δOR, meta-substituted analogs recruited β-arrestin 2 with a range of potencies (Table 2, EC<sub>50</sub>: 0.56–49 nM; Leu<sup>5</sup>-enkephalin = 8.9 nM) with near-full efficacies (Table 2, 91–130%; Leu-enkephalin = 100%), and likewise at the μOR, analogs recruited β-arrestin 2 with a broad range of potencies (Table 2, EC<sub>50</sub>: 36–589 nM; Leu-enkephalin = 977 nM) and efficacies (Table 2, 60–96% relative to DAMGO; Leu-enkephalin = 60%; Figure 4). Interestingly, DADLE recruited β-arrestin 2 more efficaciously than Leu<sup>5</sup>-enkephalin at both δOR (126%) and μOR (99%). Picoline analogs 1j–1l, generally showed reduced affinity at both receptors (Table 1, δOR *K*<sub>i</sub> = 6.2–33 nM; μOR *K*<sub>i</sub> = 9–158 nM), which further correlated with decreased G protein activation of the receptors (Table 2, δOR IC<sub>50</sub> = 4.6–48 nM; μOR IC<sub>50</sub> = 41–302 nM). At the δOR, the low affinity of pyridyl-substituted analogs correlated with low β-arrestin 2 recruitment (Table 2, EC<sub>50</sub> = 100–1122 nM; 84–98% efficacy), though these substitutions drastically affected β-arrestin 2 recruitment though the μOR (Table 2, EC<sub>50</sub> = 1.3–41.6 μM; 36–70% efficacy).

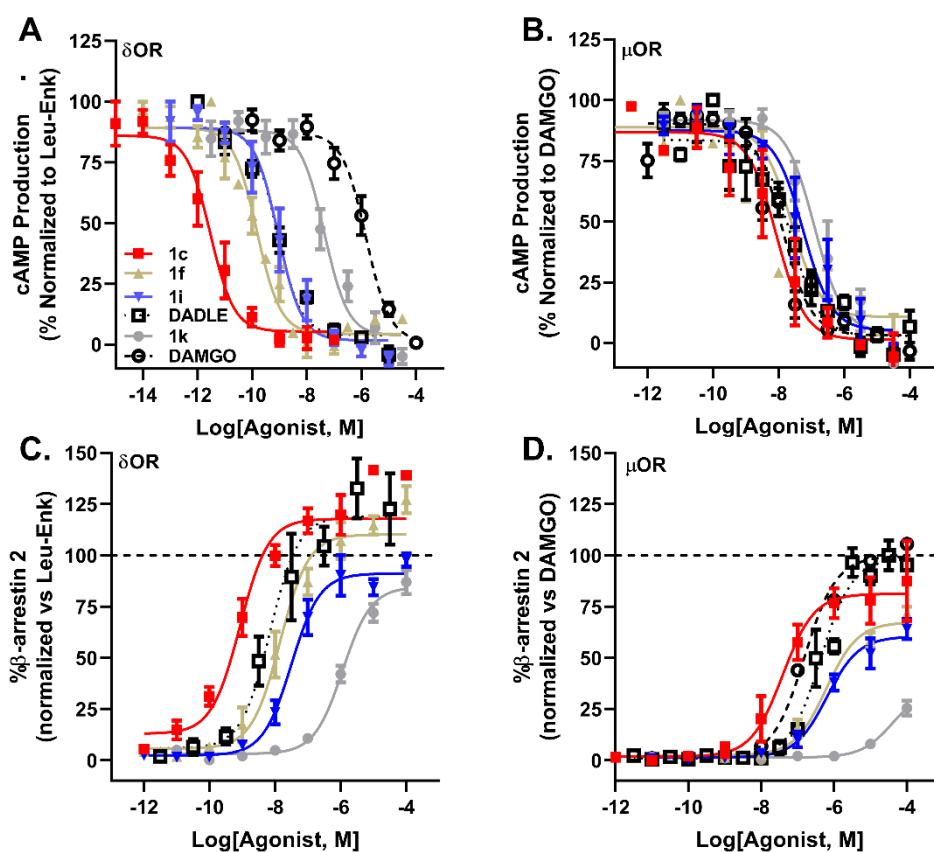
**Table 1.** Meta Substituted Phe<sup>4</sup> Analogs of Leu<sup>5</sup>-enkephalin Increase Affinity at  $\delta$ OR and  $\mu$ OR.

	$pK_i \pm \text{SEM}$ ( $\delta$ OR)	$K_i$ (nM)	$pK_i \pm \text{SEM}$ ( $\mu$ OR)	$K_i$ (nM)	Binding Selectivity ( $\delta$ OR vs $\mu$ OR)
<b>1a</b> (F)	9.48 $\pm$ 0.1	0.33	9.12 $\pm$ 0.4	0.76	2.3
<b>1b</b> (Cl)	9.87 $\pm$ 0.1	0.13	10.14 $\pm$ 0.2	0.072	0.55
<b>1c</b> (Br)	10.35 $\pm$ 0.2	0.045	9.90 $\pm$ 0.3	0.13	2.9
<b>1d</b> (I)	10.64 $\pm$ 0.2	0.023	9.86 $\pm$ 0.5	0.14	6.1
<b>1e</b> (Me)	9.86 $\pm$ 0.1	0.14	9.86 $\pm$ 0.1	0.14	1.0
<b>1f</b> (OMe)	9.31 $\pm$ 0.1	0.49	9.07 $\pm$ 0.1	0.85	1.7
<b>1g</b> (CF <sub>3</sub> )	9.93 $\pm$ 0.1	0.12	10.23 $\pm$ 0.3	0.059	0.49
<b>1h</b> (CN)	9.17 $\pm$ 0.3	0.68	9.52 $\pm$ 0.1	0.30	0.44
<b>1i</b> (NO <sub>2</sub> )	9.03 $\pm$ 0.2	0.93	9.01 $\pm$ 0.1	0.98	1.05
<b>1j</b> (2-pyr)	8.21 $\pm$ 0.1	6.17	8.04 $\pm$ 0.2	9.12	1.5
<b>1k</b> (3-pyr)	7.48 $\pm$ 0.1	33.1	6.80 $\pm$ 0.1	158	4.8
<b>1l</b> (4-pyr)	7.69 $\pm$ 0.1	20.4	7.41 $\pm$ 0.1	38.9	1.9
<b>DADLE</b>	9.01 $\pm$ 0.1	0.98	8.80 $\pm$ 0.1	1.58	1.6
Leu <sup>5</sup> -enkephalin	8.90 $\pm$ 0.1	1.26	8.77 $\pm$ 0.1	1.70	1.3
DAMGO	-	-	9.01 $\pm$ 0.1	0.98	-

All compounds were tested in three independent trials.

**Table 2.** Meta-substituted Phe<sup>4</sup> Analogs of Leu<sup>5</sup>-enkephalin Display Enhanced  $\delta$ OR and  $\mu$ OR Potency for cAMP Inhibition and  $\beta$ -arrestin 2 Recruitment, But Vary in  $\beta$ -arrestin Recruitment Efficacy.

Compound	cAMP				$\beta$ -Arrestin 2					
	$pIC_{50} \pm \text{SEM}$ ( $\delta$ OR)	$IC_{50}$ (nM)	$pIC_{50} \pm \text{SEM}$ ( $\mu$ OR)	$IC_{50}$ (nM)	$pEC_{50} \pm \text{SEM}$ ( $\delta$ OR)	$EC_{50}$ (nM)	$\delta$ OR Efficacy (% $\pm$ SEM)	$pEC_{50} \pm \text{SEM}$ ( $\mu$ OR)	$EC_{50}$ (nM)	$\mu$ OR Efficacy (% $\pm$ SEM)
<b>1a</b> (F)	9.47 $\pm$ 0.2	0.39	8.10 $\pm$ 0.2	7.94	8.01 $\pm$ 0.2	9.77	107 $\pm$ 9	6.24 $\pm$ 0.1	575	75 $\pm$ 13
<b>1b</b> (Cl)	10.66 $\pm$ 0.3	0.022	7.52 $\pm$ 0.1	30.2	8.77 $\pm$ 0.2	1.70	130 $\pm$ 10	7.17 $\pm$ 0.2	67.6	96 $\pm$ 8
<b>1c</b> (Br)	10.52 $\pm$ 0.3	0.030	8.00 $\pm$ 0.4	10	9.25 $\pm$ 0.2	0.56	116 $\pm$ 7	7.45 $\pm$ 0.2	35.5	79 $\pm$ 6
<b>1d</b> (I)	10.61 $\pm$ 0.2	0.025	8.37 $\pm$ 0.3	4.27	8.95 $\pm$ 0.2	1.12	111 $\pm$ 7	7.33 $\pm$ 0.2	46.8	70 $\pm$ 3
<b>1e</b> (Me)	10.41 $\pm$ 0.3	0.039	8.43 $\pm$ 0.3	3.72	8.46 $\pm$ 0.2	3.46	105 $\pm$ 5	6.73 $\pm$ 0.2	186	71 $\pm$ 3
<b>1f</b> (OMe)	9.84 $\pm$ 0.3	0.14	8.09 $\pm$ 0.3	8.12	7.93 $\pm$ 0.2	11.7	106 $\pm$ 5	6.23 $\pm$ 0.1	589	67 $\pm$ 3
<b>1g</b> (CF <sub>3</sub> )	9.97 $\pm$ 0.4	0.11	8.61 $\pm$ 0.4	2.45	8.39 $\pm$ 0.2	4.07	108 $\pm$ 9	7.25 $\pm$ 0.2	56.2	71 $\pm$ 3
<b>1h</b> (CN)	9.46 $\pm$ 0.3	0.35	7.92 $\pm$ 0.3	12.0	7.77 $\pm$ 0.2	17.0	91 $\pm$ 5	6.8 $\pm$ 0.2	158	68 $\pm$ 4
<b>1i</b> (NO <sub>2</sub> )	9.33 $\pm$ 0.3	0.47	7.31 $\pm$ 0.4	49.0	7.31 $\pm$ 0.2	49.0	96 $\pm$ 6	6.27 $\pm$ 0.1	537	60 $\pm$ 6
<b>1j</b> (2-pyr)	8.34 $\pm$ 0.2	4.57	7.39 $\pm$ 0.4	40.7	7.00 $\pm$ 0.2	100	92 $\pm$ 13	5.87 $\pm$ 0.1	1349	70 $\pm$ 4
<b>1k</b> (3-pyr)	7.32 $\pm$ 0.2	47.9	6.63 $\pm$ 0.4	234	5.95 $\pm$ 0.1	1122	85 $\pm$ 6	4.38 $\pm$ 0.1	41687	36 $\pm$ 7
<b>1l</b> (4-pyr)	7.52 $\pm$ 0.2	30.2	6.52 $\pm$ 0.3	302	6.40 $\pm$ 0.2	398	98 $\pm$ 6	4.43 $\pm$ 0.1	37153	64 $\pm$ 11
<b>DADLE</b>	9.09 $\pm$ 0.2	0.81	7.45 $\pm$ 0.1	35.5	7.92 $\pm$ 0.4	12.0	126 $\pm$ 10	6.33 $\pm$ 0.1	468	99 $\pm$ 3
Leu <sup>5</sup> -enkephalin	8.99 $\pm$ 0.1	1.02	7.34 $\pm$ 0.2	45.7	8.05 $\pm$ 0.1	8.91	100	6.01 $\pm$ 0.1	977	61 $\pm$ 3
DAMGO	5.91 $\pm$ 0.2	1230	7.82 $\pm$ 0.1	15.1	<5	-	-	6.80 $\pm$ 0.1	158	100



**Figure 4.** Modifications of Phe<sup>4</sup> of Leu<sup>5</sup>-enkephalin Produces Analogs with Divergent and Distinct Signaling Profiles. Inhibition of cAMP production by **1c** (■), **1f** (▲), **1i** (▼), **1k** (●), Leu<sup>5</sup>-enkephalin (□) and DAMGO (○) in HEK cells expressing  $\delta$ OR (A) and  $\mu$ OR (B). Recruitment of  $\beta$ -arrestin 2 by **1c**, **1f**, **1i**, **1k**, Leu-Enk and DAMGO in CHO cells expressing  $\delta$ OR (C) and  $\mu$ OR (D).

Within these overall trends, specific analogs show unique profiles. Meta-chlorination, -bromination, or -iodination (**1b–1d**) produced high-affinity analogs of Leu<sup>5</sup>-enkephalin that super-recruited  $\beta$ -arrestin 2 and that drastically increased functional selectivity (Table 3). These increases in affinity at  $\delta$ OR linearly correlate ( $R^2 = 0.998$ ) with the atomic van der Waals radii (H, 1.20 Å; Cl, 1.77 Å; Br, 1.92 Å; I, 2.06 Å) [36], and might suggest a halogen bonding interaction similar to those previously explored at the ortho position of Phe<sup>4</sup> [28]. However, the distinct vectors at which a sigma-hole would present from the ortho vs. meta positions suggest that the specific residues engaged through meta-substitution are likely distinct from those previously identified through ortho-substitution [28], and future computational collaborative work might enable a better understanding of the unique binding interactions between the  $\delta$ OR and meta-halogenated analogs of Leu<sup>5</sup>-enkephalin. Notably, the meta-chlorinated and -brominated analogs (**1b**, and **1c**) are 500–900-fold more potent in cAMP assays at  $\delta$ OR than at  $\mu$ OR, despite exhibiting little differences in binding affinity at  $\delta$ OR relative to  $\mu$ OR (Table 1). Interestingly, the meta-Cl analog (**1b**) had stronger bias towards G protein-signaling at  $\delta$ OR (Table 3, bias factor 1.6), but towards  $\beta$ -arrestin 2 recruitment at  $\mu$ OR relative to Leu<sup>5</sup>-enkephalin (Table 3, bias factor 0.004) as well as DAMGO (Table 3, bias factor 0.3), which provides a unique pharmacological profile for future uses. In contrast, meta-F and -CN and -NO<sub>2</sub>-substitutions (**1a,h,i**) improved  $\delta$ OR functional selectivity (Table 3), but lost  $\beta$ -arrestin 2 potency at  $\delta$ OR relative to Leu<sup>5</sup>-enkephalin. Additionally, meta-OMe and -NO<sub>2</sub> substitution (**1f**, **1i**) provided both potent and biased analogs, with G protein coupling activities comparable to Leu<sup>5</sup>-enkephalin (Table 2, IC<sub>50</sub> = 0.14–0.47 nM vs. 1.02 nM), but with improved bias factors relative to Leu<sup>5</sup>-enkephalin at both  $\delta$ OR (Table 3, bias factor 6.9–7.5) and  $\mu$ OR (Table 3, bias factor 8.4–11.1). Of these two analogs, the -NO<sub>2</sub>-substituted analog **1i**

exhibited higher  $\delta$ OR functional G protein selectivity (Table 3, 104-fold  $\delta$ OR selectivity) relative to the –OMe analog **1f** (Table 3, 58-fold  $\delta$ OR selectivity). Though pyridyl-substituted analogs (**1j–1l**) showed poor potency and efficacy for the  $\delta$ OR and  $\mu$ OR relative to Leu<sup>5</sup>-enkephalin (Table 2), the 3- and 4-pyridyl analogs (**1k–1l**) showed strong bias at  $\mu$ OR (Table 3, bias factor 17–331), when compared to the full agonist DAMGO. However, if instead of DAMGO, Leu<sup>5</sup>-enkephalin was used as the reference compound, most analogs, with the exception of **1k** and **1l** lost G protein bias (Table 3, bias factor < 1), because the analogs generally were more potent and efficacious than Leu<sup>5</sup>-enkephalin in recruiting  $\beta$ -arrestin 2 at  $\mu$ OR (Table 2), with the exception of **1k** (Table 2, 36% recruitment efficacy). Given that exogenous Leu<sup>5</sup>-enkephalin analogs in vivo would compete with endogenous Leu<sup>5</sup>-enkephalin and not DAMGO, our results highlight the limitations of interpreting bias factors (particularly using an unnatural compound, such as DAMGO, as a reference) and the associated risk of using bias factor as a major driver of lead optimization.

**Table 3.** Meta-substituted Phe<sup>4</sup> Analogs of Leu<sup>5</sup>-enkephalin Display a Range of Selectivity and Bias Profiles.

Compound	G Protein Selectivity ( $\delta$ OR vs $\mu$ OR)	Bias Factor		
		$\delta$ OR	$\mu$ OR (DG = Ref)	$\mu$ OR (LE = Ref)
<b>1a</b> (F)	20	1.8	22.2	0.36
<b>1b</b> (Cl)	1372	3.2	0.3	0.004
<b>1c</b> (Br)	333	1.3	1.2	0.02
<b>1d</b> (I)	171	3.5	3.2	0.05
<b>1e</b> (Me)	95	4.3	11.5	0.19
<b>1f</b> (OMe)	58	7.5	8.4	0.14
<b>1g</b> (CF <sub>3</sub> )	22	2.0	4.3	0.07
<b>1h</b> (CN)	34	6.8	5.4	0.09
<b>1i</b> (NO <sub>2</sub> )	104	6.9	11.1	0.18
<b>1j</b> (2-pyr)	8.9	4.0	17.2	0.27
<b>1k</b> (3-pyr)	4.9	6.7	331.1	5.89
<b>1l</b> (4-pyr)	10	2.2	63.7	1.08
<b>DADLE</b>	44	0.5	2.3	0.035
Leu <sup>5</sup> -enkephalin	45	1	4.9	1
DAMGO	0.012	-	1	0.003
Aza- $\beta$ -homoleucine <sup>¶</sup>	9.9 [23]	5.2 <sup>¶</sup>	-	1.2
Rubiscolin-5	-	2.0 [22]	-	-

<sup>¶</sup> from reference 26 using BRET ( $\beta$ -arrestin 2) and EPAC (cAMP) assays. DG = DAMGO, LE = Leu<sup>5</sup>-enkephalin.

Compared to **DADLE**, the Leu<sup>5</sup>-enkephalin analogs **1b** and **1c** displayed a similar signaling bias profile, but were more potent and selective for  $\delta$ OR, and thus may provide a better tool compound to target  $\delta$ ORs for the treatment of cardiac ischemia. However, compounds **1b** and **1c** are also more potent than **DADLE** at recruiting  $\beta$ -arrestin 2 to  $\mu$ OR, resulting in a lower bias factor (Figure 4). In contrast, analog **1i** has a favorable pharmacology relative to **DADLE**, with similar selectivity as **1c**, but improved G-protein bias at  $\delta$ OR and  $\mu$ OR relative to **DADLE**. Given the potential adverse effects associated with strong  $\mu$ OR-mediated  $\beta$ -arrestin 2 recruitment, analog **1k** is potentially useful, as it exhibited weak  $\beta$ -arrestin 2 recruitment (36% efficacy) and concomitant strong bias factor for G-protein signaling. However, cAMP potency for **1k** at  $\delta$ OR was more than one log unit weaker than **DADLE**, and thus it may be necessary further optimize the ligand by increasing  $\delta$ OR potency in the cAMP assay, while retaining the low  $\mu$ OR  $\beta$ -arrestin 2 recruitment efficacy (Figure 4).



#### 2.4. Stability

The stability of all compounds to Sprague Dawley rat plasma was assessed to study the influence of the meta- and picoline/pyridine-substitutions at Phe<sup>4</sup> relative to Leu<sup>5</sup>-enkephalin (Table 4). For this parent compound, the predominant known routes of metabolism and clearance occur through cleavage of Tyr<sup>1</sup>-Gly<sup>2</sup> by aminopeptidase *N* [37,38], and of Gly<sup>3</sup>-Phe<sup>4</sup> by angiotensin converting enzyme [39], and combined, the plasma metabolism occurs with a half-life ( $t_{1/2}$ ) of < 10 min. In general, meta substituted Phe<sup>4</sup> analogs exhibited improved plasma stability compared with Leu<sup>5</sup>-enkephalin with half-lives typically >20 min. The 3-fluoro derivative (**1a**) was the most stable analog with a half-life of 82.3 min. From UPLC-mass spectrometry analysis of degradation fragments, meta-substitution did not greatly impede the proteolysis at the Tyr<sup>1</sup>-Gly<sup>2</sup> site, but instead slowed digestion at the Gly<sup>3</sup>-Phe<sup>4</sup> site (Table 4). Thus, the improved stability of our Phe<sup>4</sup>-substituted analogs presumably derived from perturbation/deceleration of angiotensin-converting enzyme activity. Picoline peptides also displayed improved stability though interestingly, UPLC-mass spectrometry analysis indicated that degradation of all pyridyl-substituted analogs (**1j–1l**) predominantly occurred through Tyr<sup>1</sup>-Gly<sup>2</sup> as opposed to meta-substituted analogs **1a–1i** that degraded through cleavage of Gly<sup>3</sup>-Phe<sup>4</sup>.

**Table 4.** Rat Plasma Stability of Leu<sup>5</sup>-enkephalin and Its Analogs.

Compound	Half-Life (min)	95% CI	Degradation Products (First Appearance)
Leu <sup>5</sup> -enkephalin	9.4	6.3–4.5	Gly-Gly-Phe-Leu (5 min) Phe-Leu (10 min)
<b>1a</b> (F)	82.3	68.0–102.6	Gly-Gly-(meta-F)Phe-Leu (5 min) (meta-F)Phe-Leu (60 min)
<b>1b</b> (Cl)	37.8	26.5–56.6	Gly-Gly-(meta-Cl)Phe-Leu (5 min) (meta-Cl)Phe-Leu (30 min)
<b>1c</b> (Br)	21.5	12.7–38.7	Gly-Gly-(meta-Br)Phe-Leu (5 min) (meta-Br)Phe-Leu (15 min)
<b>1d</b> (I)	13.2	11.4–15.2	Gly-Gly-(meta-I)Phe-Leu (5 min) (meta-I)Phe-Leu (15 min)
<b>1e</b> (Me)	39.5	30.0–53.5	Gly-Gly-(meta-Me)Phe-Leu (5 min) (meta-Me)Phe-Leu (20 min)
<b>1f</b> (OMe)	46.1	30.4–75.6	Gly-Gly-(meta-OMe)Phe-Leu (5 min) (meta-OMe)Phe-Leu (20 min)
<b>1g</b> (CF <sub>3</sub> )	44.5	35.0–59.1	Gly-Gly-(meta-CF <sub>3</sub> )Phe-Leu (5 min) (meta-CF <sub>3</sub> )Phe-Leu (30 min)
<b>1h</b> (CN)	33.0	24.0–47.0	Gly-Gly-(meta-CN)Phe-Leu (5 min) (meta-CN)Phe-Leu (20 min)
<b>1i</b> (NO <sub>2</sub> )	28.8	16.8–55.8	Gly-Gly-(meta-NO <sub>2</sub> )Phe-Leu (5 min) (meta-NO <sub>2</sub> )Phe-Leu (20 min)
<b>1j</b> (2-pyr)	26.8	15.4–53.7	(2-pyridyl)Ala-Leu (5 min) Gly-Gly-(2-pyridyl)Ala-Leu (30 min)
<b>1k</b> (3-pyr)	54.0	29.0–127.0	(3-pyridyl)Ala-Leu (10 min) Gly-Gly-(3-pyridyl)Ala-Leu (20 min)
<b>1l</b> (4-pyr)	78.1	47.5–165.4	(4-pyridyl)Ala-Leu (10 min) Gly-Gly-(4-pyridyl)Ala-Leu (30 min)

### 3. Methods

#### 3.1. Synthetic Chemistry-General Considerations

Unless specified, all chemicals were purchased from commercial sources and used without further purification. All solvents used for synthesis were of analytical grade and used without further purification. Proton nuclear magnetic resonance ( $^1\text{H-NMR}$ ) spectra, and carbon nuclear magnetic resonance ( $^{13}\text{C-NMR}$ ) spectra were recorded on a Bruker AVIII 500 AVANCE spectrometer with a CPDUL cryoprobe (500 and 126 MHz, respectively) or a Bruker DRX 500 spectrometer (500 and 126 MHz, respectively). Fluorine nuclear magnetic resonance ( $^{19}\text{F-NMR}$ ) spectra were recorded on a Bruker AVIII 500 AVANCE spectrometer with a CPDUL BBFO cryoprobe (376 MHz) or a Bruker DRX 500 spectrometer (376 MHz). Chemical shifts ( $\delta$ ) for protons are reported in parts per million (ppm) downfield from tetramethylsilane, and are referenced to proton resonance of solvent residual peak in the NMR solvent (MeOD- $d_4$ :  $\delta = 4.87$  ppm or DMSO- $d_6$ :  $\delta = 2.50$  ppm). Chemical shifts ( $\delta$ ) for carbon are reported in ppm downfield from tetramethylsilane, and are referenced to the carbon resonances of the solvent residual peak (MeOD- $d_4$ :  $\delta = 49.1$  ppm or DMSO- $d_6$ :  $\delta = 39.52$  ppm).  $^{19}\text{F-NMR}$  chemical shifts ( $\delta$ ) are reported in ppm with respect to added internal standard:  $\text{PhCF}_3$  ( $\delta = -63.72$  ppm). NMR data are represented as follows: chemical shift (ppm), multiplicity (s = singlet, d = doublet, dd = doublet of doublets, t = triplet, q = quartet, sept = septet, m = multiplet), coupling constant in Hertz (Hz), and integration. Exact mass determinations were obtained by using electrospray ionization using a time of flight mass analyzer (Waters LCT Premiere).

Peptides were synthesized using an Aapptec Focus XC automated peptide synthesizer coupled with a heating system using a solid phase peptide synthesis protocol using Fmoc chemistry. Preparative RP-HPLC was performed using an appropriate column and solvent system (described below) and final purity of peptides was determined by UV area % from UPLC analysis. Peptides were purified by Teledyne ISCO EZ Prep system on RediSep<sup>®</sup> C18 Prep column (30  $\times$  250 mm, 100  $\text{\AA}$ ). Purity analysis of final peptides was carried out using a Waters UPLC Acquity system equipped with a PDA e $\lambda$  detector (200 to 400 nm) and a HSS T3 C18 column, (1.8  $\mu\text{M}$ , 2.1  $\times$  50 mm column), using one of two methods. Protocol A: gradient elution of 2% MeCN with 0.1% formic acid in  $\text{H}_2\text{O}$  to 98% MeCN over 2.5 min, then holding at 98% MeCN for 3 min at a flow rate of 0.6 mL/min. Protocol B: gradient elution of 2% MeCN with 0.1% formic acid in  $\text{H}_2\text{O}$  to 98% MeCN over 2.5 min, then holding at 98% MeCN for 1 min at a flow rate of 0.7 mL/min at 40  $^\circ\text{C}$ . Plasma stability was also assessed using the above UPLC column and solvent gradient program using a Waters H class Plus Acquity UPLC system coupled with a QDa detector using protocol B.

#### 3.2. Synthesis of Peptides

Peptides were synthesized using a solid phase peptide synthesis protocol using an Aapptec Focus XC automated peptide synthesizer coupled with a heating system using the Fmoc chemistry and Wang resin as solid support [34]. To prepare the resin for synthesis, a reaction vessel equipped with a sintered glass bottom was charged with Fmoc-Leu-Wang resin (0.2 mM), and swelled in a mixture of dichloromethane and DMF (1:1) for 15 min. The resin was then transferred to a peptide synthesizer reaction vessel. The resin was deprotected twice using 20% piperidine in DMF for 5 min at 70  $^\circ\text{C}$ . Subsequently, an Fmoc-protected amino acid was double coupled with the Leucine-wang resin by treating with  $N,N'$ -diisopropylcarbodiimide (3.0 equiv., 0.2 M in DMF) and Oxyma (3.0 equiv., 0.2 M in DMF) at 70  $^\circ\text{C}$  for 8 min. Completion of coupling reactions was monitored by a Kaiser's test for the initial peptide [40]. Each coupling was followed by removal of the Fmoc group using 20% piperidine in DMF at 70  $^\circ\text{C}$  for 5 min and repeated once. The cycle of the Fmoc removal and coupling was repeated with subsequent Fmoc-protected amino acids to generate the desired resin-bound peptide. Cleavage of the peptide from resin and concomitant deprotection of the side chain protecting groups was carried out by shaking in TFA/triisopropylsilane/ $\text{H}_2\text{O}$  (95/2.5/2.5; 5 mL), at ambient temperature for 3 h. Subsequent filtration afforded the peptide in the filtrate and the volume was reduced to 0.2 mL.

Then, the crude peptides were precipitated by adding cold diethyl ether, and the crude peptides were then purified by RP-HPLC. Synthesized peptides were characterized by NMR, and the high-resolution mass spectroscopy.

### 3.3. Materials Used in the Cellular Signaling Assays

Leu<sup>5</sup>-enkephalin and forskolin, were purchased from Sigma-Aldrich (St. Louis, MO USA). (D-Ala<sup>2</sup>, N-MePhe<sup>4</sup>, Gly-ol) enkephalin (DAMGO) was purchased from Tocris Bioscience (Minneapolis, MN, USA). Radiolabels were from Perkin Elmer (Waltham, MA, USA).

### 3.4. Cell Culture and Biased Signaling Assays

cAMP inhibition and  $\beta$ -arrestin 2 recruitment assays were performed as previously described [12]. In brief, for cAMP inhibition assays HEK 293 (Life Technologies, Grand Island, NY, USA) cells were transiently transfected in a 1:3 ratio with FLAG-mouse  $\delta$ OR, or HA-mouse  $\mu$ OR and pGloSensor22F-cAMP plasmids (Promega, Madison, WI, USA) using Xtremegene9 (Sigma). Two days post-transfection cells (20,000 cells/well, 7.5  $\mu$ L) were seeded in low volume Greiner 384-well plates (#82051-458, VWR, Batavia, IL, USA) and were incubated with Glosensor reagent (Promega, 7.5  $\mu$ L, 2% final concentration) for 90 min at room temperature. Cells were stimulated with 5  $\mu$ L drug solution for 20 min at room temperature prior to stimulation with 5  $\mu$ L forskolin (final concentration 30  $\mu$ M) for an additional 15 min at room temperature. For  $\beta$ -arrestin recruitment assays, CHO-human  $\mu$ OR PathHunter  $\beta$ -arrestin 2 cells or CHO-human  $\delta$ OR PathHunter  $\beta$ -arrestin 2 cells (DiscoverX, Fremont, CA, USA) were plated (2,500 cells/well, 10  $\mu$ L) one day prior to stimulation with 2.5  $\mu$ L drug solution for 90 min at 37 °C/5% CO<sub>2</sub>, after which cells were incubated with 6  $\mu$ L cell PathHunter assay buffer (DiscoverX) for 60 min at room temperature as per the manufacturer's protocol. Luminescence for each of these assays was measured using a FlexStation3 plate reader (Molecular Devices, Sunnyvale, CA, USA).

### 3.5. Radioligand Binding Assay

For the binding assay 50  $\mu$ L of a dilution series of peptide was added to 50  $\mu$ L of 3.3 nM [3H]DPDPE ( $K_d = 3.87$  nM) or 2.35 nM of [3H]DAMGO ( $K_d = 1.07$  nM) in a clear 96 well plate. Next, 100  $\mu$ L of membrane suspension containing 7  $\mu$ g protein was added to the agonist wells and incubated for 90 min at room temperature. The reaction mixture was then filtered over a GF-B filter plate (Perkin Elmer) followed by four quick washes with ice-cold 50 mM Tris HCl. The plate was dried overnight, after which 50  $\mu$ L scintillation fluid (Ultimagold uLLT) was added and radioactivity was counted on a Packard TopCount NXT scintillation counter. All working solutions were prepared in a radioligand assay buffer containing 50 mM Tris HCl, 10 mM MgCl<sub>2</sub>, and 1 mM ethylenediaminetetraacetic acid at pH 7.4.

### 3.6. Calculation of Bias Factor

Bias factors were calculated using the operational model equation in Prism 8 to calculate Log R ( $\tau/K_A$ ) (Table S2) as previously described [12]. Subsequently, bias factors were calculated using Leu<sup>5</sup>-enkephalin as reference compound for  $\delta$ OR and using either DAMGO or Leu<sup>5</sup>-enkephalin as reference compound for  $\mu$ OR, respectively. Leu<sup>5</sup>-enkephalin and DAMGO were more potent in the cAMP (G protein) assay than in the  $\beta$ -Arrestin 2 recruitment assay, and thus were not unbiased, but rather G protein-biased to begin with. A bias factor > 1 meant that the agonist was more G protein-biased than the reference compound; A bias factor < 1 meant that the agonist was less G protein-biased than the reference compound.

### 3.7. Data and Statistical Analysis

All data are presented as means  $\pm$  standard error of the mean, and analysis was performed using GraphPad Prism 8 software (GraphPad Software, La Jolla, CA). For in vitro assays, nonlinear regression was conducted to determine pIC<sub>50</sub> (cAMP) or pEC<sub>50</sub> ( $\beta$ -arrestin 2 recruitment). Technical replicates were used to ensure the reliability of single values, specifically each data point for binding and  $\beta$ -arrestin recruitment was run in duplicate, and for the cAMP assay in triplicate. The averages of each independent run were counted as a single experiment and combined to provide a composite curve in favor of providing a 'representative' curve. In each experimental run, a positive control/reference compound was utilized to allow the data to be normalized and to calculate the log bias value. A minimum of three independent values were obtained for each compound in each of the cellular assays.

### 3.8. Assessment of Plasma Stability

Sprague Dawley rat plasma containing K<sub>2</sub>-ethylenediaminetetraacetic acid (Innovative Research, MI, USA) was transferred into 300  $\mu$ L aliquots and stored at  $-20$  °C until use. The plasma stabilities of Leu<sup>5</sup>-enkephalin and its synthesized analogs were determined in plasma diluted to 50% with saline (isotonic sodium chloride solution; 0.9% *w/v*) [41]. An aliquot of the resulting solution (25  $\mu$ L) was incubated at 37 °C for 15 min before the addition of a solution of a Leu<sup>5</sup>-enkephalin analog (25  $\mu$ L of a 100  $\mu$ M isotonic NaCl solution; 0.9% *w/v*). After adding analog, an aliquot of the mixture was removed at each indicated time point (0, 5, 10, 15, 20, 30, 60, 120, 240 min) and immediately quenched with 100  $\mu$ L of a methanol solution containing 20  $\mu$ M Fmoc-Leu-OH as an internal standard. The resulting peptide solutions were centrifuged at 13,000 rpm for 15 min at 4 °C on tubes equipped with 2000 MW filtrate tubes (Sartorius, USA). Then, the filtrate was transferred into vials and a 5  $\mu$ L sample of the resulting solution was analyzed on an UPLC system coupled with a QDa detector. For quantitative determination, area-under-the-curve for the peaks corresponding to the UV chromatogram was measured for both the Leu<sup>5</sup>-enkephalin analog and the internal standard. Determination of half-life ( $t_{1/2}$ ) was carried out by using the GraphPad Prism one-phase decay method.

## 4. Conclusions

Meta-substitutions of Phe<sup>4</sup> of Leu<sup>5</sup>-enkephalin were generally well tolerated and certain substitutions improved affinity, potency,  $\delta$ OR selectivity and stability of this endogenous opioid. The generated pharmacological data herein may aid computational modeling efforts to reveal ligand-receptor interactions at  $\delta$ OR and  $\mu$ OR that will guide the development of novel peptides with tuned selectivity and signaling profiles. The novel Leu<sup>5</sup>-enkephalin analogs have superior  $\delta$ OR selectivity over  $\mu$ OR relative to DADLE, the gold-standard peptide for studying the role of  $\delta$ OR in cardiac ischemia. Additionally, the analogs generally have lower  $\beta$ -arrestin recruitment efficacy at  $\mu$ OR, which could further reduce potential adverse in vivo effects. Finally, relative to DADLE, the meta-substituents tune the bias profile at  $\delta$ OR (either more or less biased towards G-protein signaling), and the resulting tool compounds should be useful for investigating the importance of  $\delta$ OR mediated  $\beta$ -arrestin signaling in the peptides cardioprotective effects.

**Supplementary Materials:** The following are available online, Specifically, for compounds **1a–l**: Additional pharmacological characterization, stability data, NMR spectra and characterization data for peptides, UPLC traces for determining purity. Table S1: Efficacy of cAMP inhibition of Meta-substituted Phe<sup>4</sup> Analogs of Leu<sup>5</sup>-enkephalin at  $\delta$ OR and  $\mu$ OR. Table S2: LogR values for Meta-substituted Phe<sup>4</sup> Analogs of Leu-enkephalin at  $\delta$ OR and  $\mu$ OR in the cAMP and  $\beta$ -arrestin 2 ( $\beta$ -arr2) assays. 95% confidence intervals are presented between parentheses.

**Author Contributions:** R.J.C. data acquisition and analysis, supervision and original draft preparation. K.K.S. design, synthesis, and analysis of analogs, original draft preparation. H.S. data acquisition and analysis. B.R.C. data acquisition and analysis. H.C. data acquisition and analysis. K.L.M. data acquisition and analysis. A.T.B. data acquisition and analysis. R.A.A. design and conceptualization, data analysis, original draft preparation, funding acquisition and supervision. R.M.v.R.: design and conceptualization, data analysis, original draft preparation, funding acquisition and supervision. All authors proofread and approved the final draft.

**Funding:** This research was funded by the National Institute on Alcohol Abuse and Alcoholism grants AA025368, AA026949, AA026675 (R.M.v.R.) and the National Institute on Drug Abuse grants DA045897 (R.M.v.R.) and DA036730 (R.A.A.) of the National Institutes of Health, and funds provided by the Purdue Institute for Drug Discovery and the Purdue University Department of Medicinal Chemistry and Molecular Pharmacology. NMR Instrumentation was provided by NIH Shared Instrumentation Grants (S10OD016360 and S10RR024664), NSF Major Research Instrumentation Grants (9977422 and 0320648), and an NIH Center Grant (P20GM103418). The APC was funded by DA036730 (R.A.A.).

**Conflicts of Interest:** All authors declare no biomedical financial interests or potential conflicts of interests.

## References

1. Hughes, J.; Smith, T.W.; Kosterlitz, H.W.; Fothergill, L.A.; Morgan, B.A.; Morris, H.R. Identification of two related pentapeptides from the brain with potent opiate agonist activity. *Nature* **1975**, *258*, 577–580. [[CrossRef](#)]
2. Comb, M.; Seeburg, P.H.; Adelman, J.; Eiden, L.; Herbert, E. Primary structure of the human Met- and Leu-enkephalin precursor and its mRNA. *Nature* **1982**, *295*, 663–666. [[CrossRef](#)]
3. Ikeda, Y.; Nakao, K.; Yoshimasa, T.; Yanaihara, N.; Numa, S.; Imura, H. Existence of Met-enkephalin-Arg6-Gly7-Leu8 with Met-enkephalin, Leu-enkephalin and Met-enkephalin-Arg6-Phe7 in the brain of guinea pig, rat and golden hamster. *Biochem. Biophys. Res. Commun.* **1982**, *107*, 656–662. [[CrossRef](#)]
4. Simantov, R.; Kuhar, M.J.; Pasternak, G.W.; Snyder, S.H. The regional distribution of a morphine-like factors enkephalin in monkey brain. *Brain Res.* **1976**, *106*, 189–197. [[CrossRef](#)]
5. Akil, H.; Owens, C.; Gutstein, H.; Taylor, L.; Curran, E.; Watson, S. Endogenous opioids: Overview and current issues. *Drug Alcohol Depend.* **1998**, *51*, 127–140. [[CrossRef](#)]
6. Raynor, K.; Kong, H.; Chen, Y.; Yasuda, K.; Yu, L.; Bell, G.I.; Reisine, T. Pharmacological characterization of the cloned kappa-, delta-, and mu-opioid receptors. *Mol. Pharmacol.* **1994**, *45*, 330–334.
7. Belluzzi, J.D.; Grant, N.; Garsky, V.; Sarantakis, D.; Wise, C.D.; Stein, L. Analgesia induced in vivo by central administration of enkephalin in rat. *Nature* **1976**, *260*, 625–626. [[CrossRef](#)]
8. Schaz, K.; Stock, G.; Simon, W.; Schlor, K.H.; Unger, T.; Rockhold, R.; Ganten, D. Enkephalin effects on blood pressure, heart rate, and baroreceptor reflex. *Hypertens. (Dallas, Tex. 1979)* **1980**, *2*, 395–407. [[CrossRef](#)]
9. Violin, J.D.; Crombie, A.L.; Soergel, D.G.; Lark, M.W. Biased ligands at G-protein-coupled receptors: Promise and progress. *Trends Pharmacol. Sci.* **2014**, *35*, 308–316. [[CrossRef](#)]
10. Vicente-Sanchez, A.; Dripps, I.J.; Tipton, A.F.; Akbari, H.; Akbari, A.; Jutkiewicz, E.M.; Pradhan, A.A. Tolerance to high-internalizing delta opioid receptor agonist is critically mediated by arrestin 2. *Br. J. Pharmacol.* **2018**, *175*, 3050–3059. [[CrossRef](#)]
11. Robins, M.T.; Chiang, T.; Mores, K.L.; Alongkronrusmee, D.; van Rijn, R.M. Critical Role for Gi/o-Protein Activity in the Dorsal Striatum in the Reduction of Voluntary Alcohol Intake in C57Bl/6 Mice. *Front. Psychiatry* **2018**, *9*, 112. [[CrossRef](#)]
12. Chiang, T.; Sansuk, K.; Van Rijn, R.M.  $\beta$ -Arrestin 2 dependence of  $\delta$  opioid receptor agonists is correlated with alcohol intake. *Br. J. Pharmacol.* **2016**, *173*, 332–343. [[CrossRef](#)]
13. Remesic, M.; Lee, Y.S.; Hruby, V.J. Cyclic Opioid Peptides. *Curr. Med. Chem.* **2016**, *23*, 1288–1303. [[CrossRef](#)]
14. Zhang, J.; Ferguson, S.S.G.; Barak, L.S.; Bodduluri, S.R.; Laporte, S.A.; Law, P.-Y.; Caron, M.G. Role for G protein-coupled receptor kinase in agonist-specific regulation of  $\delta$ -opioid receptor responsiveness. *Proc. Natl. Acad. Sci.* **1998**, *95*, 7157–7162. [[CrossRef](#)]
15. Borlongan, C.V. Delta opioid peptide (D-ALA 2, D-LEU 5) enkephalin: Linking hibernation and neuroprotection. *Front. Biosci.* **2004**, *9*, 3392. [[CrossRef](#)]
16. Wolf, A.; Luszczyk, E.R.; Beilman, G.J. Hibernation-Based Approaches in the Treatment of Hemorrhagic Shock. *SHOCK* **2018**, *50*, 14–23. [[CrossRef](#)]
17. Uchiyama, T.; Kotani, A.; Kishida, T.; Tatsumi, H.; Okamoto, A.; Fujita, T.; Murakami, M.; Muranishi, S.; Yamamoto, A. Effects of various protease inhibitors on the stability and permeability of [D-Ala<sup>2</sup>,D-Leu<sup>5</sup>]enkephalin in the rat intestine: Comparison with leucine enkephalin. *J. Pharm. Sci.* **1998**, *87*, 448–452. [[CrossRef](#)]

18. Beddell, C.R.; Clark, R.B.; Lowe, L.A.; Wilkinson, S.; Chang, K.J.; Cuatrecasas, P.; Miller, R. A conformational analysis for leucine-enkephalin using activity and binding data of synthetic analogues. *Br. J. Pharmacol.* **1977**, *61*, 351–356. [[CrossRef](#)]
19. Kovoor, A.; Nappey, V.; Kieffer, B.L.; Chavkin, C.  $\mu$  and  $\delta$  Opioid Receptors Are Differentially Desensitized by the Coexpression of  $\beta$ -Adrenergic Receptor Kinase 2 and  $\beta$ -Arrestin 2 in *Xenopus* Oocytes. *J. Biol. Chem.* **1997**, *272*, 27605–27611. [[CrossRef](#)]
20. Bohn, L.M.; Lefkowitz, R.J.; Gainetdinov, R.R.; Peppel, K.; Caron, M.G.; Lin, F.T. Enhanced morphine analgesia in mice lacking beta-arrestin 2. *Science* **1999**, *286*, 2495–2498. [[CrossRef](#)]
21. Whistler, J.L.; Chuang, H.; Chu, P.; Jan, L.Y.; von Zastrow, M. Functional Dissociation of  $\mu$  Opioid Receptor Signaling and Endocytosis. *Neuron* **1999**, *23*, 737–746. [[CrossRef](#)]
22. Cassell, R.J.; Mores, K.L.; Zervas, B.L.; Mahmoud, A.H.; Lill, M.A.; Trader, D.J.; van Rijn, R.M. Rubiscoins are naturally occurring G protein-biased delta opioid receptor peptides. *Eur. Neuropsychopharmacol.* **2019**, *29*, 450–456. [[CrossRef](#)]
23. Bella Ndong, D.; Blais, V.; Holleran, B.J.; Proteau-Gagné, A.; Cantin-Savoie, I.; Robert, W.; Nadon, J.-F.; Beauchemin, S.; Leduc, R.; Piñeyro, G.; et al. Exploration of the fifth position of leu-enkephalin and its role in binding and activating delta (DOP) and mu (MOP) opioid receptors. *Pept. Sci.* **2018**, *111*, e24070. [[CrossRef](#)]
24. Vezzi, V.; Onaran, H.O.; Molinari, P.; Guerrini, R.; Balboni, G.; Calò, G.; Costa, T.; Calò, G.; Costa, T. Ligands raise the constraint that limits constitutive activation in G protein-coupled opioid receptors. *J. Biol. Chem.* **2013**, *288*, 23964–23978. [[CrossRef](#)]
25. Aguila, B.; Coulbault, L.; Boulouard, M.; Leveille, F.; Davis, A.; Toth, G.; Borsodi, A.; Balboni, G.; Salvadori, S.; Jauzac, P.; et al. In vitro and in vivo pharmacological profile of UFP-512, a novel selective delta-opioid receptor agonist; correlations between desensitization and tolerance. *Br. J. Pharmacol.* **2007**, *152*, 1312–1324. [[CrossRef](#)]
26. Raehal, K.M.; Walker, J.K.L.; Bohn, L.M. Morphine Side Effects in  $\beta$ -Arrestin 2 Knockout Mice. *J. Pharmacol. Exp. Ther.* **2005**, *314*, 1195–1201. [[CrossRef](#)]
27. Soergel, D.G.; Subach, R.A.; Burnham, N.; Lark, M.W.; James, I.E.; Sadler, B.M.; Skobieranda, F.; Violin, J.D.; Webster, L.R. Biased agonism of the  $\mu$ -opioid receptor by TRV130 increases analgesia and reduces on-target adverse effects versus morphine: A randomized, double-blind, placebo-controlled, crossover study in healthy volunteers. *Pain* **2014**, *155*, 1829–1835. [[CrossRef](#)]
28. Rosa, M.; Caltabiano, G.; Barreto-Valer, K.; Gonzalez-Nunez, V.; Gómez-Tamayo, J.C.; Ardá, A.; Jiménez-Barbero, J.; Pardo, L.; Rodríguez, R.E.; Arsequell, G.; et al. Modulation of the Interaction between a Peptide Ligand and a G Protein-Coupled Receptor by Halogen Atoms. *ACS Med. Chem. Lett.* **2015**, *6*, 872–876. [[CrossRef](#)]
29. Toth, G.; Kramer, T.H.; Knapp, R.; Lui, G.; Davis, P.; Burks, T.F.; Yamamura, H.I.; Hruby, V.J. [D-Pen<sup>2</sup>,D-Pen<sup>5</sup>]enkephalin analogues with increased affinity and selectivity for delta opioid receptors. *J. Med. Chem.* **1990**, *33*, 249–253. [[CrossRef](#)]
30. Weber, S.J.; Greene, D.L.; Sharma, S.D.; Yamamura, H.I.; Kramer, T.H.; Burks, T.F.; Hruby, V.J.; Hersh, L.B.; Davis, T.P. Distribution and analgesia of [3H][D-Pen<sup>2</sup>, D-Pen<sup>5</sup>]enkephalin and two halogenated analogs after intravenous administration. *J. Pharmacol. Exp. Ther.* **1991**, *259*, 1109–1117.
31. Weber, S.J.; Greene, D.L.; Hruby, V.J.; Yamamura, H.I.; Porreca, F.; Davis, T.P. Whole body and brain distribution of [3H]cyclic [D-Pen<sup>2</sup>,D-Pen<sup>5</sup>] enkephalin after intraperitoneal, intravenous, oral and subcutaneous administration. *J. Pharmacol. Exp. Ther.* **1992**, *263*, 1308–1316. [[PubMed](#)]
32. Grant Liska, M.; Crowley, M.G.; Lippert, T.; Corey, S.; Borlongan, C.V. Delta Opioid Receptor and Peptide: A Dynamic Therapy for Stroke and Other Neurological Disorders. In *Handbook of Experimental Pharmacology*, 1st ed.; Emily, J., Ed.; Springer: Cham, Switzerland, 2017; pp. 277–299.
33. He, X.; Sandhu, H.K.; Yang, Y.; Hua, F.; Belser, N.; Kim, D.H.; Xia, Y. Neuroprotection against hypoxia/ischemia:  $\delta$ -opioid receptor-mediated cellular/molecular events. *Cell. Mol. Life Sci.* **2013**, *70*, 2291–2303. [[CrossRef](#)]
34. Shenmar, K.; Sharma, K.K.; Wangoo, N.; Maurya, I.K.; Kumar, V.; Khan, S.I.; Jacob, M.R.; Tikoo, K.; Jain, R. Synthesis, stability and mechanistic studies of potent anticryptococcal hexapeptides. *Eur. J. Med. Chem.* **2017**, *132*, 192–203. [[CrossRef](#)]
35. Mahindra, A.; Sharma, K.K.; Jain, R. Rapid microwave-assisted solution-phase peptide synthesis. *Tetrahedron Lett.* **2012**, *53*, 6931–6935. [[CrossRef](#)]
36. Bondi, A. van der Waals Volumes and Radii. *J. Phys. Chem.* **1964**, *68*, 441–451. [[CrossRef](#)]

37. Weinberger, S.B.; Martinez, J.L.J. Characterization of Hydrolysis of [ Leu ] enkephalin in Rat Plasma. *J. Pharmacol. Exp. Ther.* **1988**, *247*, 129–135.
38. Roques, B.; Noble, F. Dual inhibitors of enkephalin-degrading enzymes (neutral endopeptidase 24.11 and aminopeptidase N) as potential new medications in the management of pain and opioid addiction. *NIDA Res. Monogr.* **1995**, *147*, 104–145.
39. Suzanne, E.T.; Kenneth, L.A. Leucine-Enkephalin Metabolism in Brain Microvessel Endothelial Cells. *Peptides* **1994**, *15*, 109–116.
40. Sarin, V.K.; Kent, S.B.; Tam, J.P.; Merrifield, R.B. Quantitative monitoring of solid-phase peptide synthesis by the ninhydrin reaction. *Anal. Biochem.* **1981**, *117*, 147–157. [[CrossRef](#)]
41. Beaudeau, J.L.; Blais, V.; Holleran, B.J.; Bergeron, A.; Pineyro, G.; Guérin, B.; Gendron, L.; Dory, Y.L. N-Guanidyl and C-Tetrazole Leu-Enkephalin Derivatives: Efficient Mu and Delta Opioid Receptor Agonists with Improved Pharmacological Properties. *ACS Chem. Neurosci.* **2019**, *10*, 1615–1626. [[CrossRef](#)]

**Sample Availability:** Upon reasonable request and based on material in hand, compounds **1a–11** can be distributed in a timely fashion by Dr. Altman. However, as supplies are finite, we cannot guarantee every request can be accommodated.



© 2019 by the authors. Licensee MDPI, Basel, Switzerland. This article is an open access article distributed under the terms and conditions of the Creative Commons Attribution (CC BY) license (<http://creativecommons.org/licenses/by/4.0/>).