

KANSAS PUBLIC HEALTH ASSOCIATION

Salutes

Roberta E. Foote, R. N.

and

James M. Mott, M. D.



SAMUEL J. CRUMBINE BANQUET

Wichita, Kansas

April 18, 1963

SERVICE RECOGNITION AWARD

To give recognition to members who have given long and faithful service in the field of public health, the Kansas Public Health Association has established a Service Recognition Award. This Award is presented to those who are selected by a committee composed of the President of the Association and the Chairman of each Section. The Award in the form of a Certificate, was presented for the first time in 1956.

PAST RECIPIENTS

- 1956—Miss Cassandra Ritter
Mary C. Bure, R.N.
- 1957—Alice M. Finley, R.N.
Ivan F. Shull, M.P.H.
- 1958—Sarah Zeller, R.N.
James T. Newton
- 1959—Bertha H. Campbell
Melvin O. Johnson, B.S.
- 1960—C. Herbert Munger, M.D.
Jesse M. Reddy
- 1961—Flora Acton McKinley
Evan E. Wright
- 1962—Bernard J. Langdon
Margaret P. Shadoan, R.N.



ROBERTA ELIZABETH FOOTE, R.N.

ROBERTA ELIZABETH FOOTE, R.N.

Roberta Elizabeth Foote was born in Coldwater, Michigan, February 2, 1898, the first child of Jay B. and Alice Barnhart Foote. Her father tells of the blizzard through which he walked to get a physician. But as he tells it, with a touch of his wonderful humor, "She's been worth it." Her father was later invalided for some years by the Spanish American War. He was able to do some of the housework while Roberta's mother taught high school. On Roberta, as the oldest of four children, also fell a great deal of the responsibility for the home.

Education:

Albion High School, Albion, Michigan, lists in its 1916 graduating class the name of Roberta Elizabeth Foote. She attended Albion College for two years before entering the Michigan University Hospital Training School for Nurses on January 1, 1919. In 1921 she obtained her "R.N."

A truly educated person never stops learning. Miss Foote exemplifies this adage. She spent the academic year 1926-27 at the Merrill-Palmer Institute in Detroit, Michigan. While working as a school nurse back in Albion, she acquired an A.B. degree from Albion College in 1928. To cap her academic career, she received her M.A. in Public Health Nursing from Columbia University in New York City, in 1939.

Career:

As she tells it, ever since the day after she received her R.N., Miss Foote has been in public health, she has never

done any other kind of nursing since, except to care for close relatives during their illnesses.

Her first job was as school nurse in Albion, Michigan, from 1921 till 1925. Because of her love for children, she enjoyed this period of working with school children, but she went on to other jobs. For the next year she was a Health Educator with the Michigan Tuberculosis Association.

In 1927, she went back to her first love, school nursing, in Albion, Michigan. She stayed with this job until 1933 when she joined the staff of the Kellogg Foundation and was assigned to the Eaton County Health Department at Charlotte, Michigan. It didn't take her long to move from staff nurse to Supervisor of Public Health Nurses. From 1939 to 1942, she worked in two other Kellogg Foundation Counties in the Hillsdale and Calhoun County Health Departments as Senior Supervisor.

Then in 1942 the St. Louis County Health Department, Clayton, Missouri, secured her services as an Educational Director. She stayed there until 1946 when Dr. Fred Mayes did a good job of luring her to Kansas to become the Public Health Nursing Educational Director. In 1951, she became the Director of Public Health Nursing for the Kansas State Board of Health, the position she holds at this time.

Through her ability to develop potential capabilities in others, she has built up a full staff of nurses in the Kansas State Board of Health, including ten district public health nurses.

She is not only highly competent in her profession and

position; she is loved by everyone who comes in contact with her. The district public health nurses she has supervised have found in her, not only a fine director, but a dear friend as well. She is interested in the work they do, and also in their personal lives. When necessary to scold for sins of omission or commission, she can do so without leaving any resentment—only a determination to do better. There is no higher praise for an administrator than this.

Special Activities:

Miss Foote has been active in her profession not only in the states where employed, but on the national level as well. She was secretary of the public health nursing section of the American Nurses Association from 1956-60.

She was a member of the Expert Advisory Committee on Federal Traineeships on the U. S. Public Health Service in 1956-58.

She is a Fellow in the American Public Health Association. She was president of the Kansas Public Health Association in 1954.

In 1960 she was chosen to be included in Who's Who Among American Women.

She has been active in the Kansas State Nurses Association and the Kansas League for Nursing.

When the Kansas State Nurses Association, the Kansas League for Nursing and the State Board of Nurses Registration decided that a survey of the nursing resources of Kansas was needed, Miss Foote was chosen to be chairman of the Executive Committee of this survey. It was a huge job, but it was accomplished.

She is a firm believer in higher education for nurses, and has worked hard to make it possible for registered nurses to secure the necessary education to advance in their jobs. She has also worked for nursing legislation such as school nurse certification and a more flexible nurse practice act.

She is an active member of the First Methodist Church in Topeka, Kansas. She has taught Sunday School there and participates in other church-related activities.

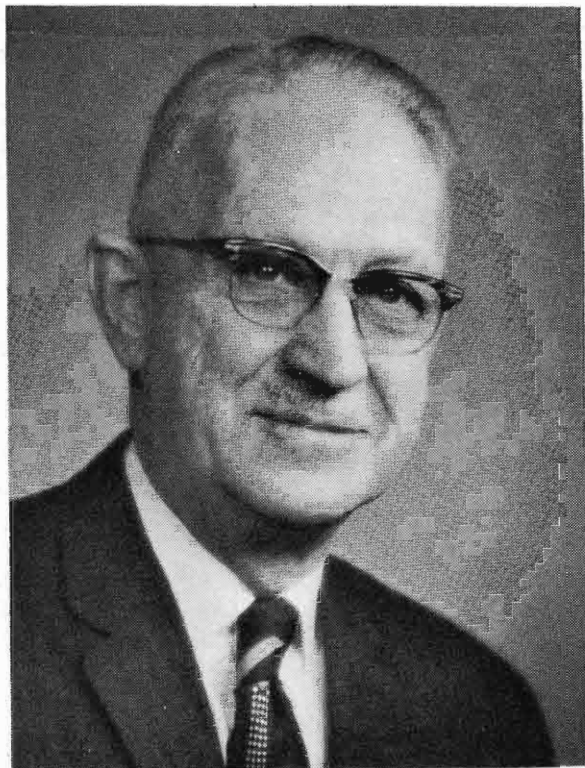
For hobbies, she is an ardent bird watcher and a member of the Audubon Society. She enjoys working or just puttering around in the yard of the home she shares with her father and a friend.

In January, 1963, she thoroughly enjoyed a trip to Hawaii, so that is not on the usual list of things to do after retirement. On that list, though, is the plan to write another book. This one will be "Great-Grandmother Stories" as a supplement to the one she has already written entitled "Great-Grandfather Stories." As you can guess, these books deal with the rich history of the Foote family.

When her friends and co-workers try to analyze her ability and personality, they finally give up with the words—"She's just Roberta. There's no one quite her equal." There is nothing more that can be added to a word picture of our dear Roberta. With no further ado, the Kansas

Public Health Association hereby salutes Roberta Elizabeth Foote and bestows upon her the 1963 Service Recognition Award.

* * * *



JAMES M. MOTT, M.D.

JAMES M. MOTT, M.D.

From Kansas City, Missouri, to Topeka, Kansas, in 70 years may seem slow, but Doctor Mott crowded many activities over a wide range of area into that span of his life.

Education:

All of his primary and secondary education was received in Kansas City, Missouri. At the age of 18 he entered Baker University at Baldwin, Kansas. Here, as well as later at Kansas University, he starred at football to the point of being all-conference center in both leagues of the respective schools.

His internship was at St. Margaret's Hospital in Kansas City, Kansas, with graduation from the Kansas University Medical School in 1921. As a truly professional man, Doctor Mott kept learning through day-to-day experiences and study, but even that was not enough. In 1945, he attended the Michigan University School of Public Health to get his Public Health Administration academic training.

Career:

Doctor Mott opened his private practice in Tonganoxie in June, 1921, and moved it over to Lawrence in 1927. In addition to his private practice, he served as the K. U. Athletic Association team physician for four years. The fateful and fortunate move into Public Health was made in 1934 when he was named part-time Superintendent of Public Health for the City of Lawrence.

During these years he maintained an active interest in military affairs. The shadows of World War II reached

out to call Doctor Mott into active duty with the 35th Division, Kansas National Guard, in 1940. In due time he became the post surgeon and Commanding Officer of a 500-bed hospital in Anchorage, Alaska. In January, 1943, he established a hospital on Amchitka, at the tip of the Aleutians to care for casualties from the Altu-Kiska Campaign. After completing this assignment and a bit of "warming up", he was assigned to the Second Army, San Antonio, Texas, as assistant surgeon in June, 1944. A year later he resigned active military life to become director of the Lawrence-Douglas County Health Department.

In September, 1951, Jim—as most of us know him—came to the Kansas State Board of Health as the State Epidemiologist. It didn't take him long to prove himself. By the following March he was given additional responsibilities by being named director of the Division of Preventable Diseases, consisting of Epidemiology, Tuberculosis, and Venereal Disease Control.

Family:

In 1917, Jean Glasscock, daughter of Doctor S. S. Glasscock, Kansas City, Kansas became his bride. Their first child died at the age of four. Their son, James M. Mott, Jr., is a psychiatrist and analyst in Los Angeles. Their daughter, Betty Anne, is married to Thomas S. Mackie and lives in Arlington, Texas. The latest count of grandchildren stood at seven.

Of his wife, Doctor Mott is quoted as saying: "Attention to problems in public health have been made much

easier for me because of the full cooperation of the girl who was a doctor's daughter, a doctor's wife and a doctor's mother."

Special Activities:

His special field of preventive medicine actually began in 1923 when he participated in the first use of toxin-antitoxin for diphtheria control. In 1934, it was emphasis on whooping cough; in 1941, it was tetanus; in 1954, it was Salk polio vaccine and in 1962, Sabin oral polio vaccine.

Always active in professional organizations, Doctor Mott got his start by being secretary of the Douglas County Medical Society for six years before becoming its president. He is presently active on several committees in both the Kansas and the Shawnee County Medical Societies.

Although a part of his professional career, his activities with the Kansas National Guard come under the category of Special Activities. In 1957, he retired with the rank of Colonel after serving ten years as the Guard's state surgeon. Since then he has served as a civilian medical advisor to the adjutant general. Parallel to this segment of his career, was his position as alternate for the deputy director of medical aspects of civil defense for all of Kansas for the years, 1951 through 1960.

In addition to his active participation in the County and State Medical Societies, Doctor Mott is a Fellow of the American Public Health Association, a member of the American Medical Association and the American Thoracic Society.

The Kansas Tuberculosis and Health Association has recently honored him for his contributions to public health. Now the Kansas Public Health Association brings additional honor to this grand servant of the public by saluting him and awarding him the 1963 Service Recognition Award.

* * * *

KANSAS PUBLIC HEALTH ASSOCIATION

1962-63 Executive Committee

Herman A. Janzen President
Charles F. Haughey, M.D. President-elect
J. Lee Mayes Vice-President
Robert H. Riedel, M.D. Past-President
Waldo W. Wilmore Secretary-Treasurer

Members at Large:

Hilda Le Cuer, R.N.
Rosalie Osburn, R.N.

Sectional Representatives:

Health Officers Joseph Henning, M.D.
Public Health Nursing Marion Belleville, R.N.
Sanitation William A. Salero
Special Services Grover Dotzour
A.P.H.A. James F. Aiken, Jr.

* * * *

Committee for Service Recognition

Herman A. Janzen
Marion Belleville Joseph Henning, M.D.
Grover Dotzour Keith Nash