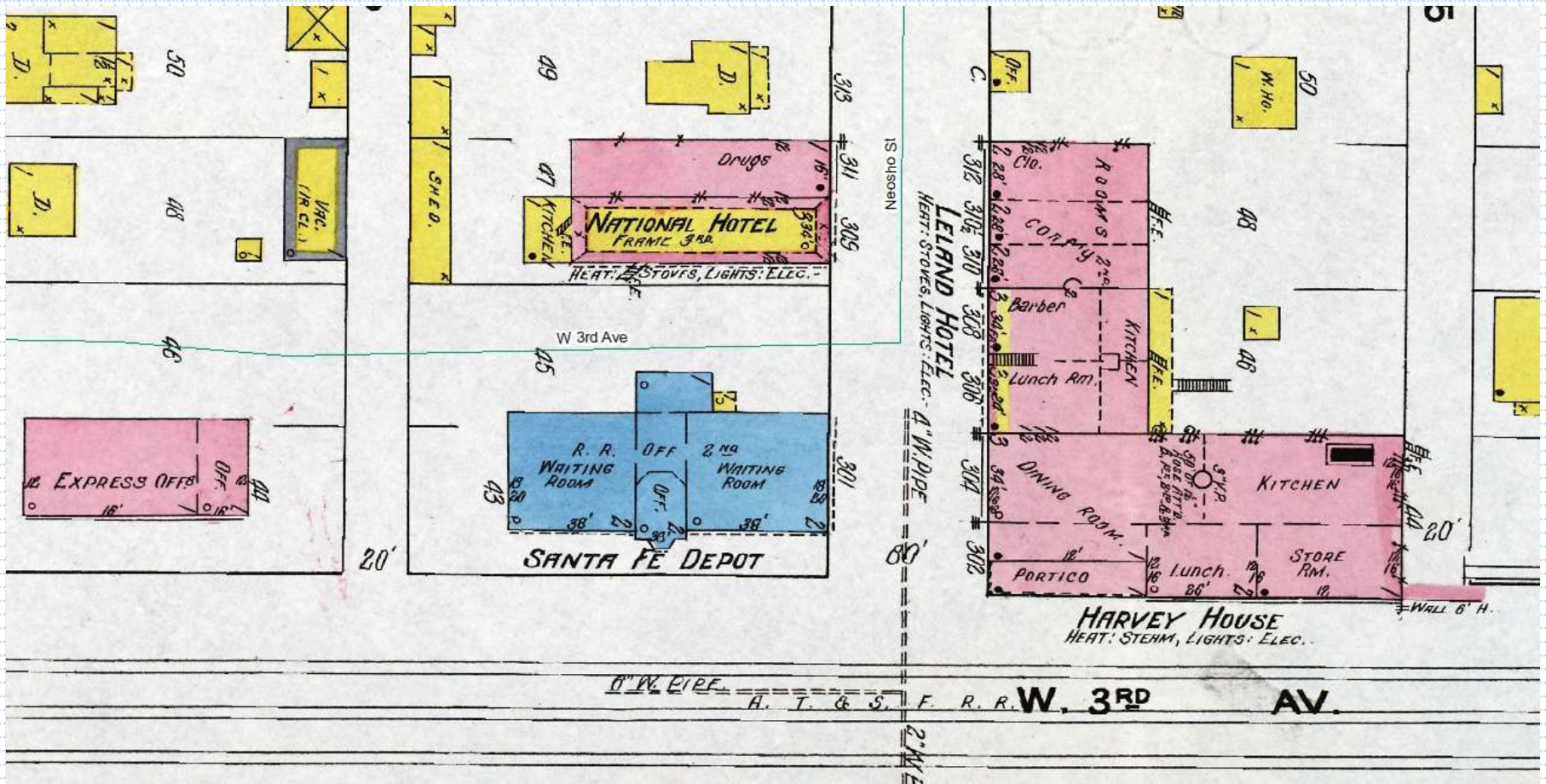


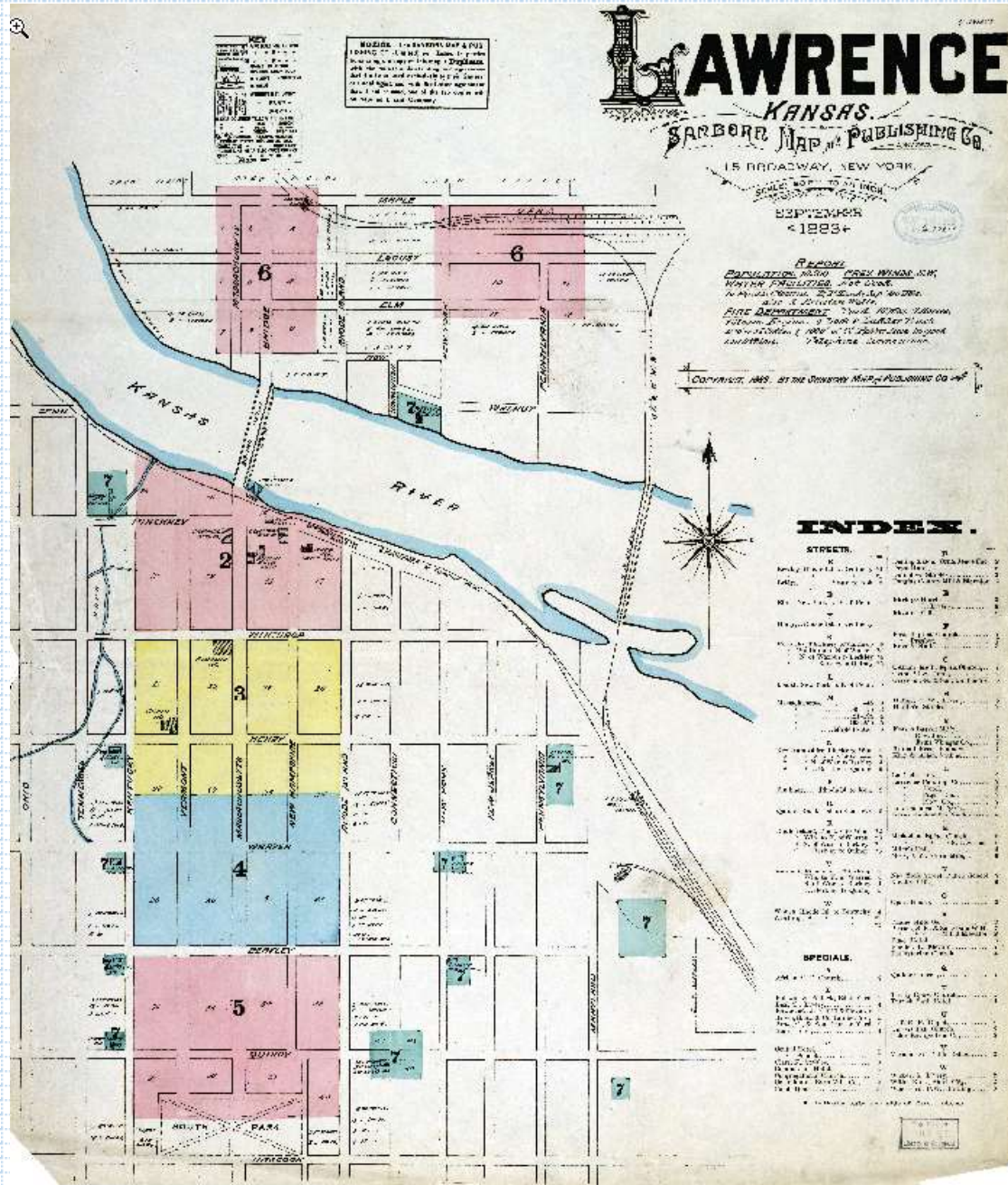
Burning Down the Mouse: Fired Up About Historical Maps



*Rhonda Houser, GIS Analyst,
University of Kansas Libraries*

Sanborn Indexes

- Created in 1867 to assess **fire insurance liability** in urban areas
- **Indexes** show area covered by maps in set, local details, directory, conditions and services related to fire hazard



Sanborn Map Details

- **Maps show** roads, businesses (some residences), industry, schools, churches, water bodies, buildings in detail

KEY

NO. OF STORIES	3	FIRE WALL 6 IN. AB. ROOF
SHINGLE ROOF	*	" " 12 " " "
COMPOSTN ROOF	●	" " 18 " " "
SLATE or TIN ROOF	○	FRAME PARTITION
STEAM BOILER	☐	OPENING & IRON DOOR
WINDOWS	☐	WINDOWS " " SHUTTERS
STABLE	☐	WINDOW IN 1 ST STORY
BLDGS COLORED YELLOW ARE FRAME		" 1 ST & 3 RD "
" " RED " BRICK		" 2 ND & 4 TH "
" " BLUE " STONE		
" " GREEN SPECIALS		

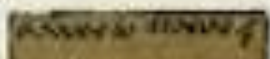
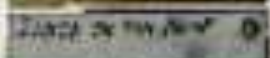
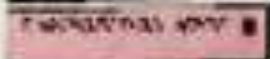
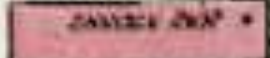
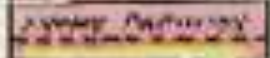
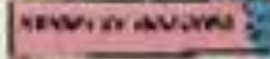
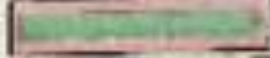

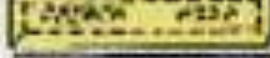
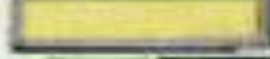

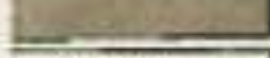

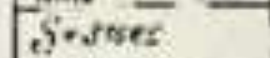


(5) (29) INDICATE RELATIVE HEIGHTS
 ALTERNATE STREET NOS ARE ACTUAL
 CONSECUTIVE " " ARBITRARY
 BROKEN LINE NEAR BLDG - WOOD CORNICE
 SOLID " " " METAL "

(24) CLOTH LINED

COUNTING FROM LEFT TO RIGHT WHILE LOOKING TOWARDS BUILDING.
 DOT REPRESENTS OPENING

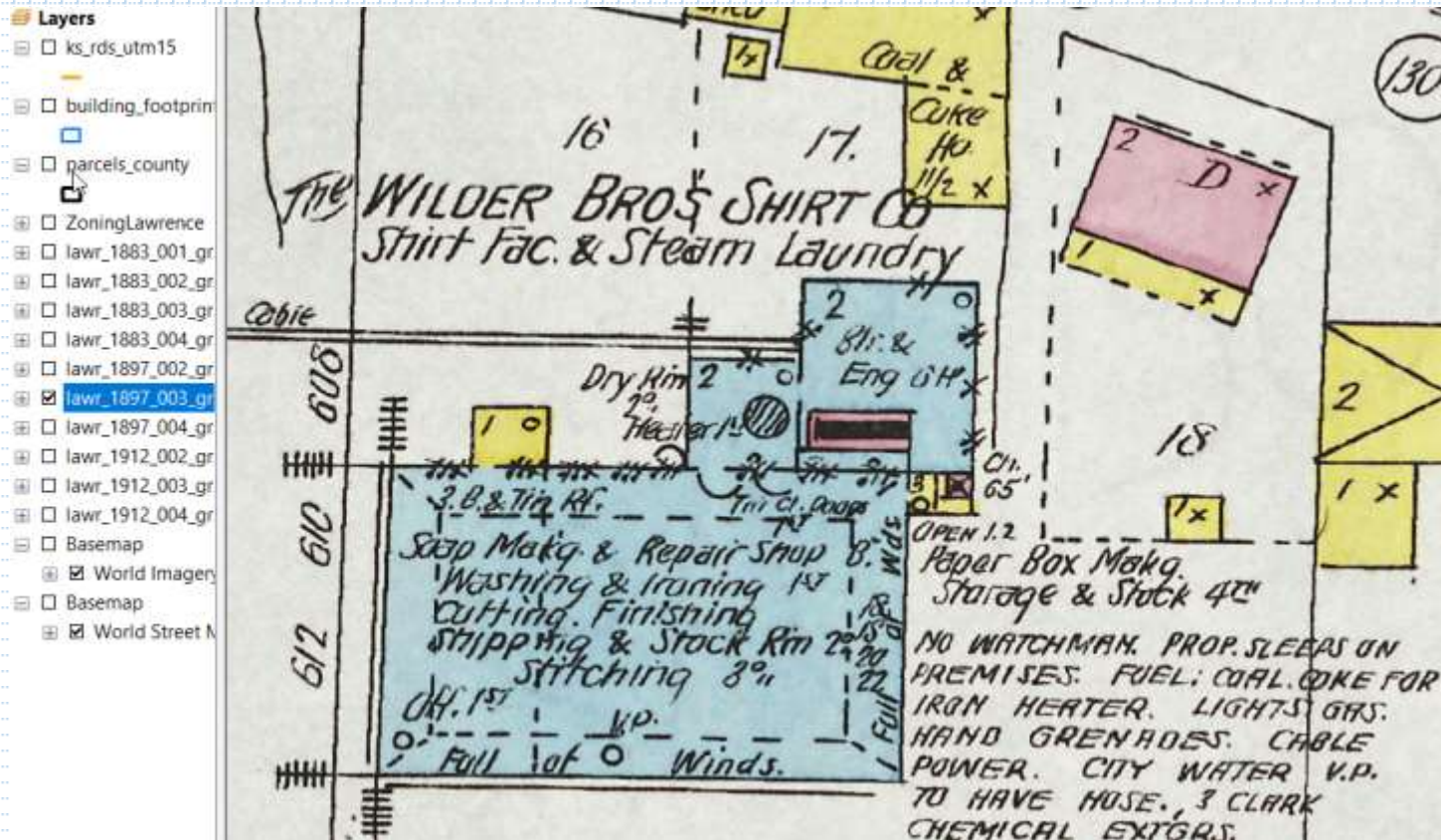
KEY



-  Fire proof construction
-  Iron building
-  Brick building with metal cornice
-  " " " " frame
-  " " " " side
-  " " " " stone front
-  Brick special
-  " " " " with frame side
-  Frame building
-  " " " " iron clad
-  " " " " special
-  Adobe building
-  Wall 1st no openings through it
-  " " " " with openings
-  Fire wall 6 inches above roof
-  " " " " "

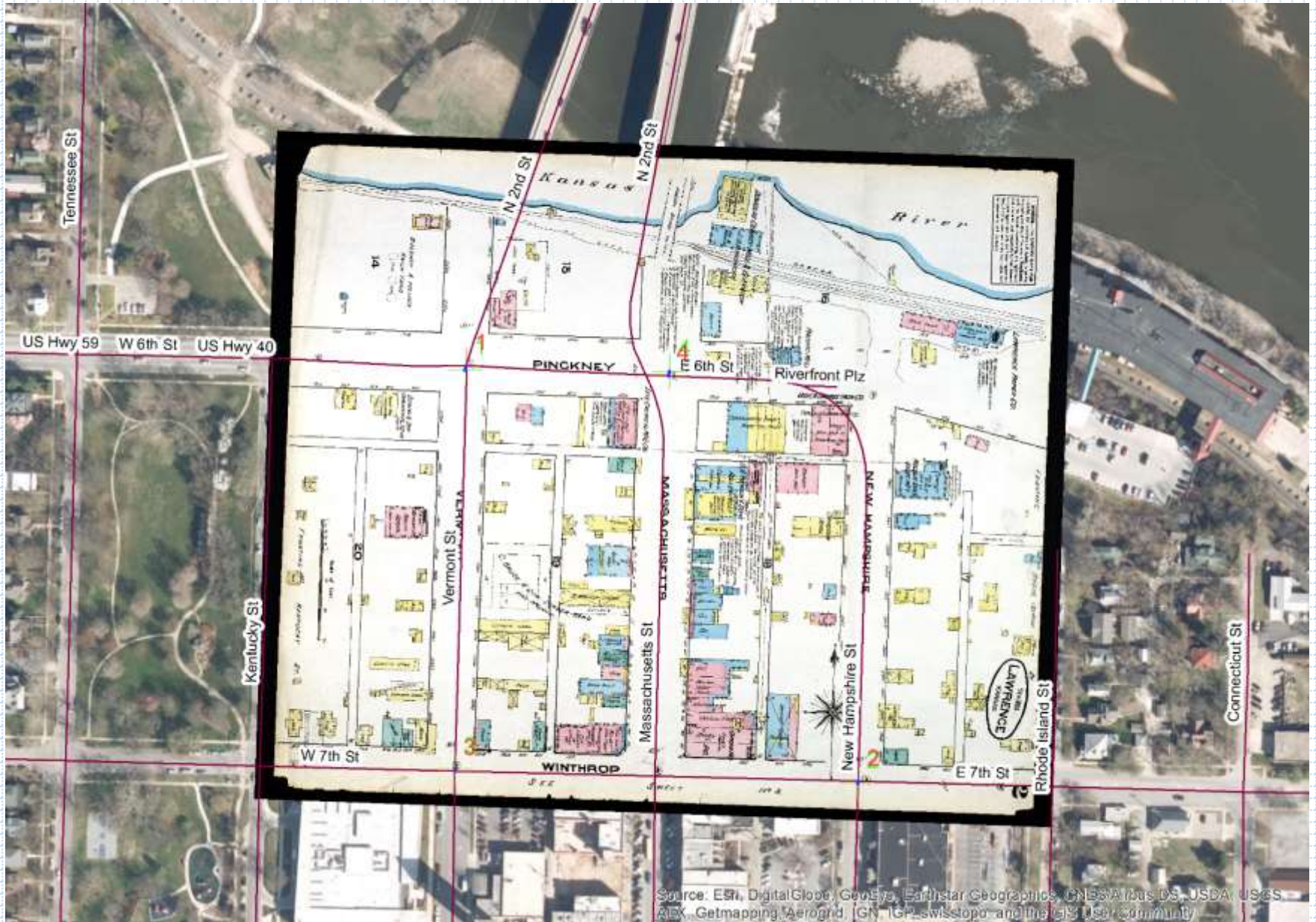
-  17
 -  18
 -  24
 -  Opening in division wall with iron door
 -  " " " " standard iron door
 -  Windows with iron shutters
 -  Window opening in first story
 -  " " " " second
 -  Windows " " 2nd & 3rd stories
 -  " " " " 2nd & 4th
 -  Stable
 -  horizontal steam boiler
 -  Vertical " " "
 -  Brick chimney
 -  17 Elevations
 -  18 Iron " " "
 -  19 Fire alarm box
 -  20 Automatic sprinklers
 -  IEP Independent electric plant
 -  AFA Automatic fire alarm
- Reference to adjoining sheet

Kansas Collection



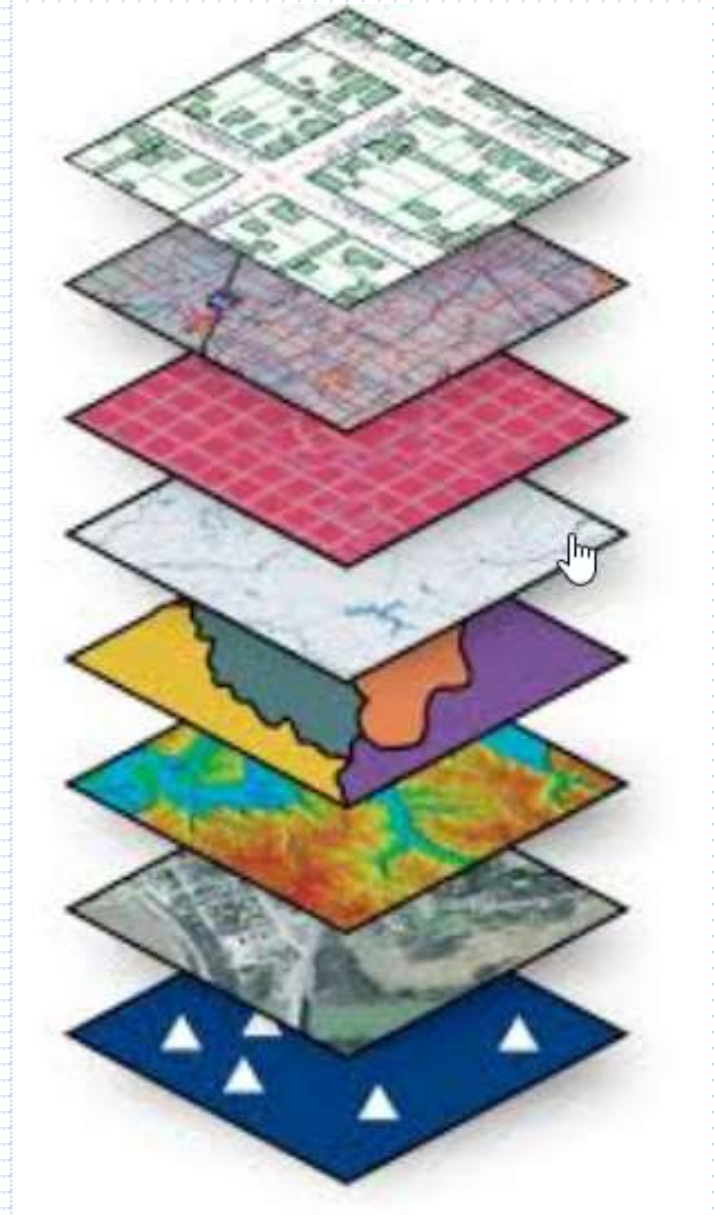
- Cover 241 Kansas towns and cities (1883-1922).
- Digital maps will continue to be a rich, local collection.
- Georeferenced maps will be a unique resource.

Georeference

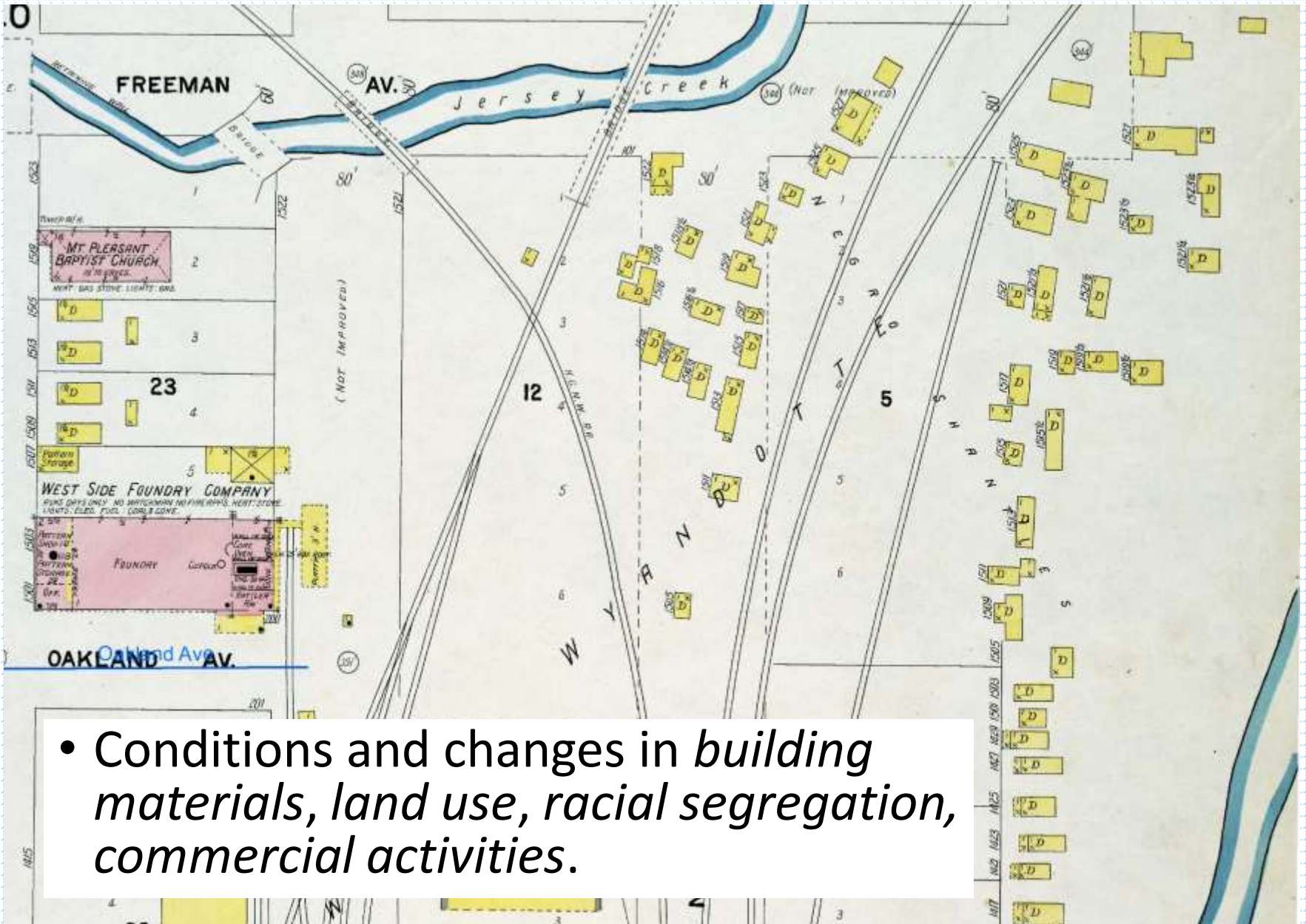


Use of the Georeferenced Maps

- Architecture, genealogy, history, urban geography
- Research and teaching, government, cultural institutions
- GIS software with other data
- Web map with basic data



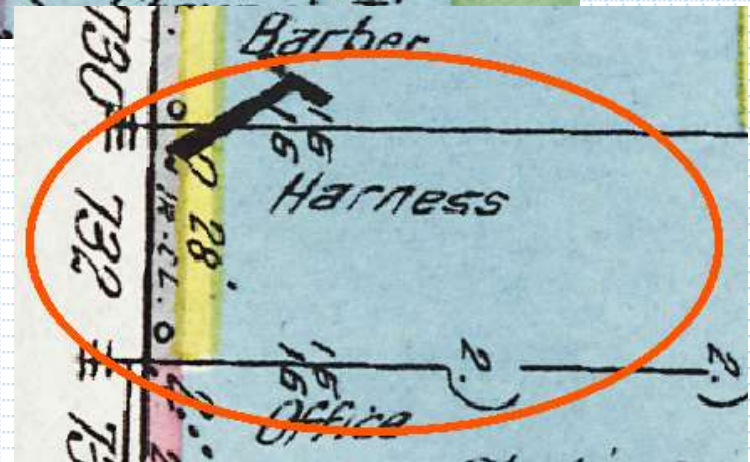
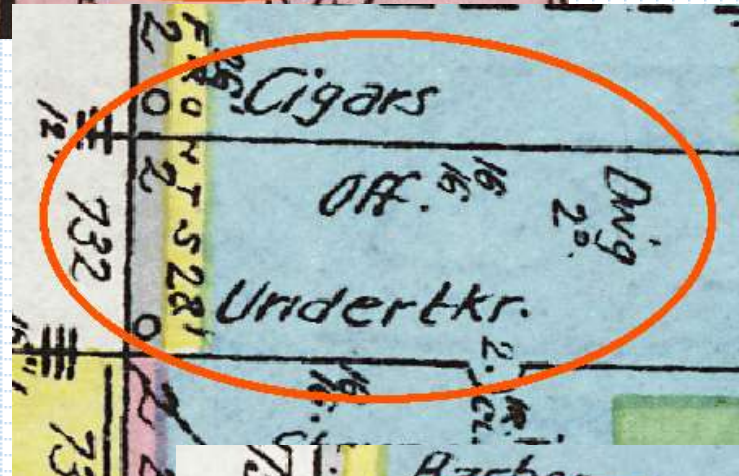
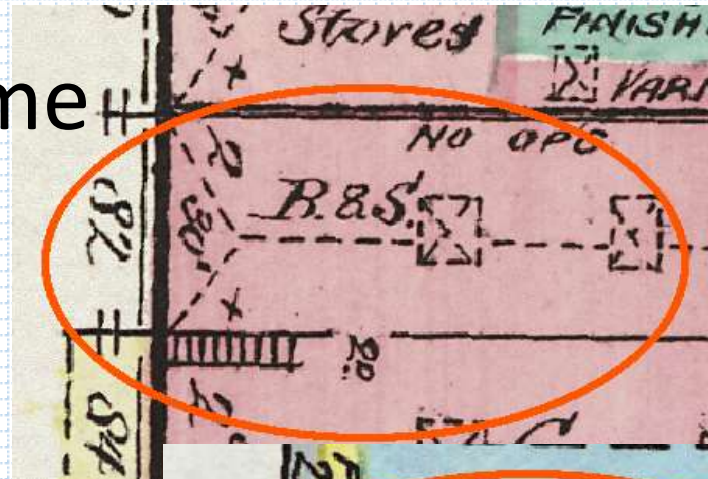
Geographic Questions



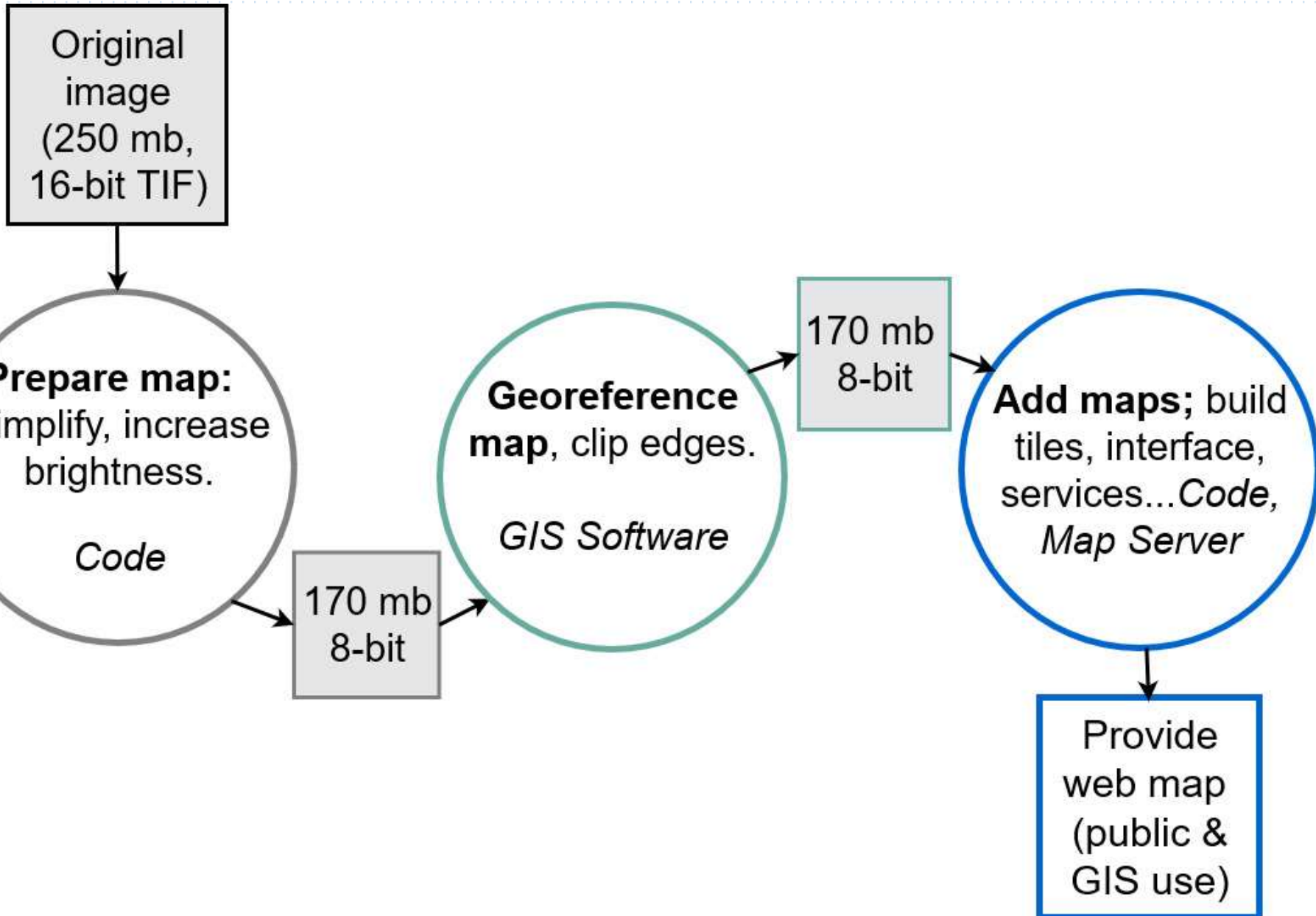
- Conditions and changes in *building materials, land use, racial segregation, commercial activities.*

Drilling Down in Time

- **1883:** B&S?
- **1897:** Undertaker
- **1912:** Harnesses
- **Currently:** Kitchen supply store



Project Workflow



Staff

Students – georeference, manage data



IT Staff - develop workflows, manage data, prepare maps, run map server, build web map

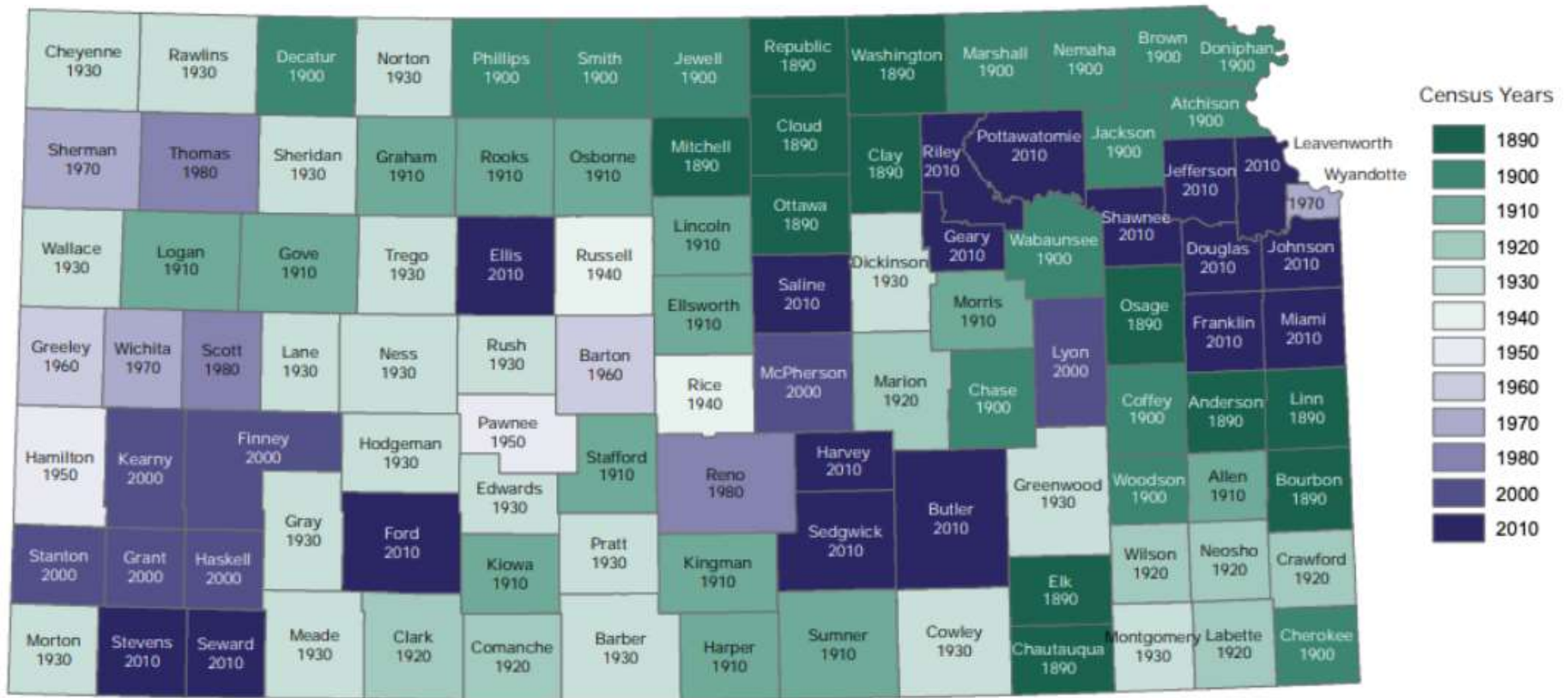


GIS Analyst - coordinate & promote project, develop workflows, oversee students, georeference, manage data



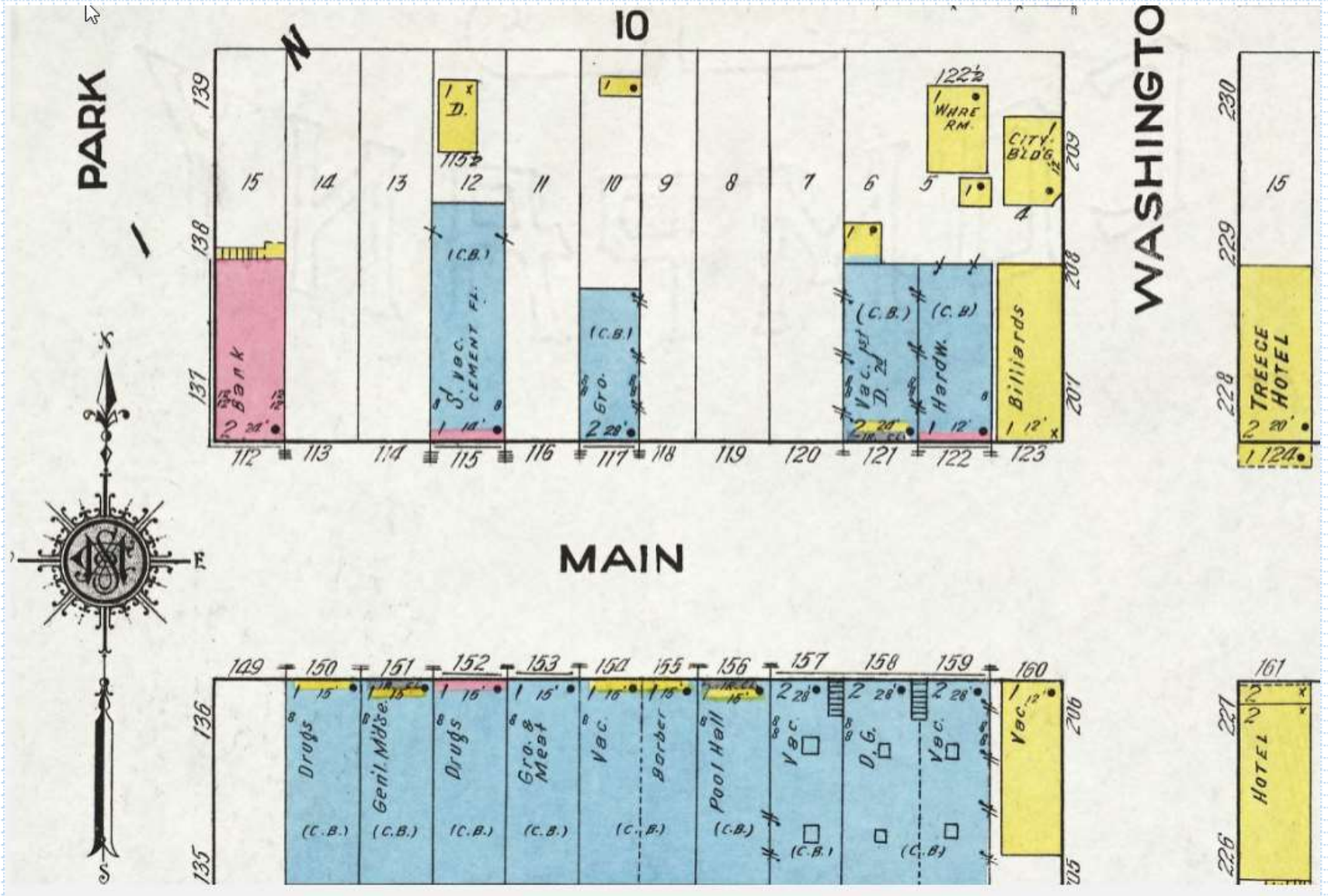
The Heyday: Peak Population 1890-2010

Census Year of Maximum Population by Kansas County
1890-2010



Source: Institute for Policy & Social Research, The University of Kansas; data from U.S. Census Bureau, Decennial Census.

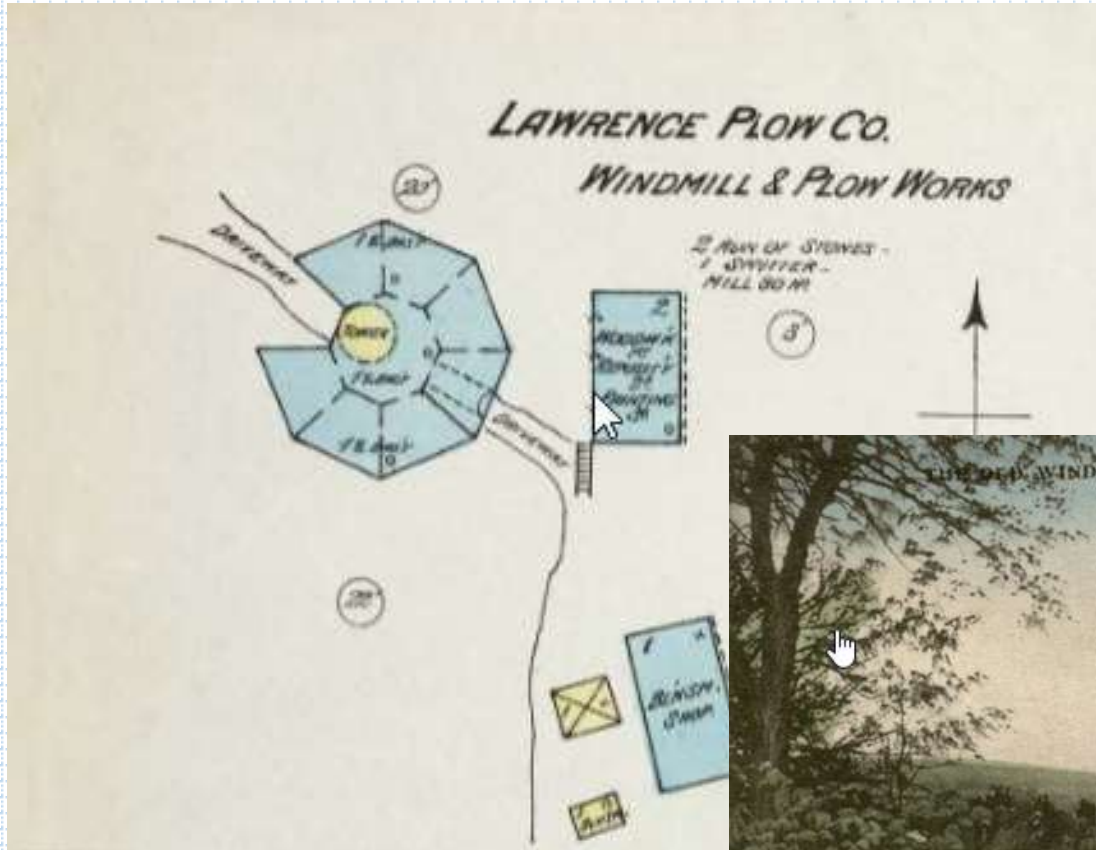
Treece: A mining town that is no more...







The "Old Dutch Windmill"



View of Lawrence With Windmill and North College

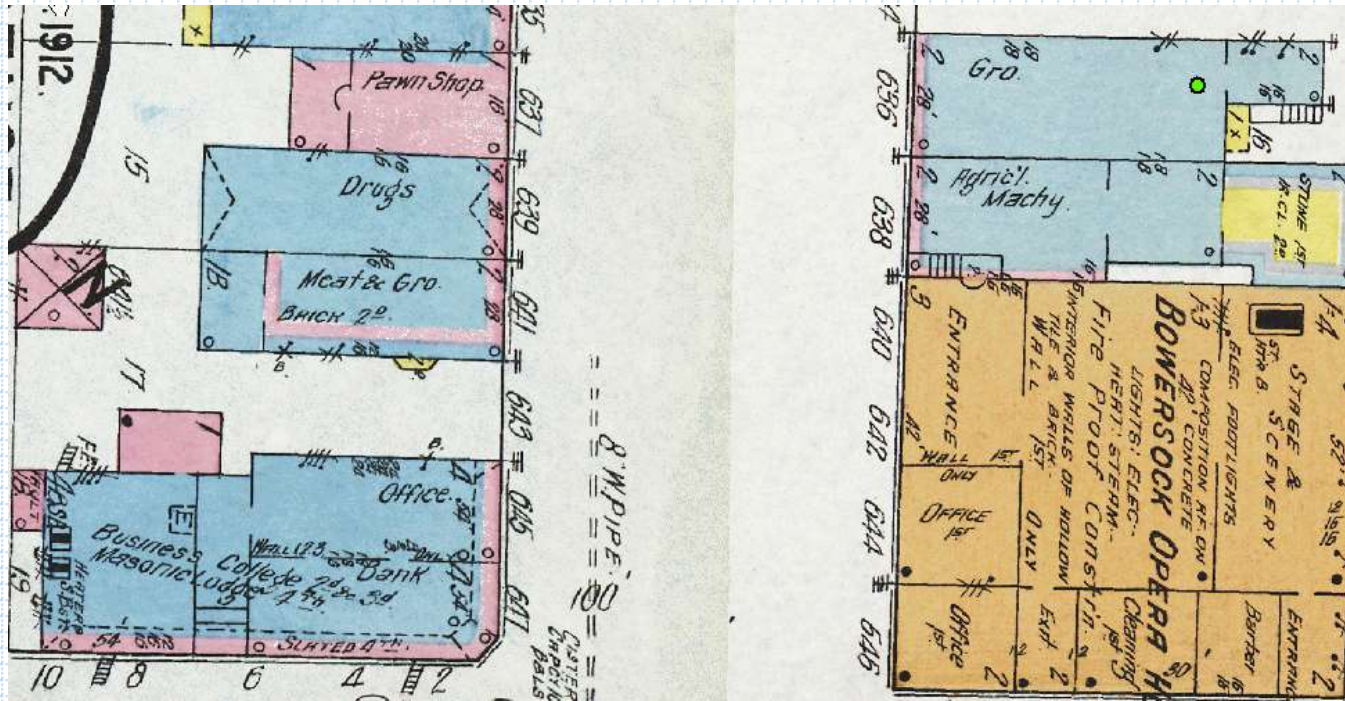


Milestones

- MAGIC grant: student(s) georeferenced ca. 600 maps
- Overall: team has georeferenced over 5,600 maps since 2017
- Ca. 11,000 total maps



Thank You



Spencer Research Library Kansas Collection

KU Libraries Innovation Fund

Co-workers- KU Libraries and Information Technology

Mid-America GIS Consortium

Questions and comments?

rhouser@ku.edu