

Building boom tapers off, but projects abound

By BOB PITTMAN
J-W Staff Writer

What do you do if your house is too old and too small but your budget rules out a move to a roomier, more modern address?

You expand, modernize, or otherwise make the best of what you have.

On Mount Oread, Kansas University officials are taking that same approach in an era when new construction can be out of the question.

"Nationally, the main emphasis is on major repairs and additions," said Allen Wiechert, director of facilities planning at Kansas University.

That trend has translated into several KU projects during 1983-84, such as a massive Haworth Hall addition, the replacement of Bailey Hall's mechanical systems and an addition to the Botanical Research building on KU's West Campus.

"THERE'S A SPECIAL move on campuses to preserve what has already been built," Wiechert said. "The massive building that we've seen over the past two decades is coming to an end. People are stepping back and looking at what they call the infrastructure."

But that's not to say that the KU projects have all stayed small — in scope or price.

During the past year, several major projects were rising throughout campus:

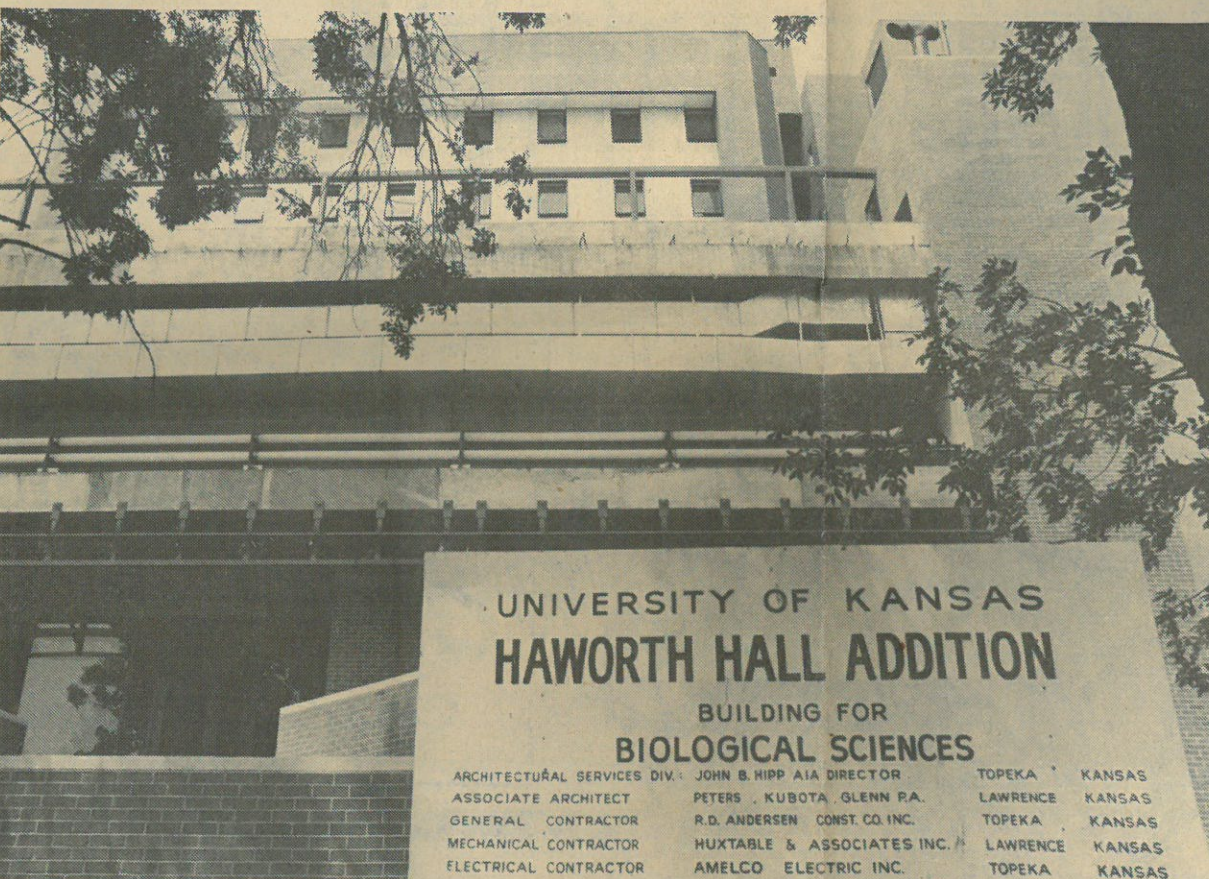
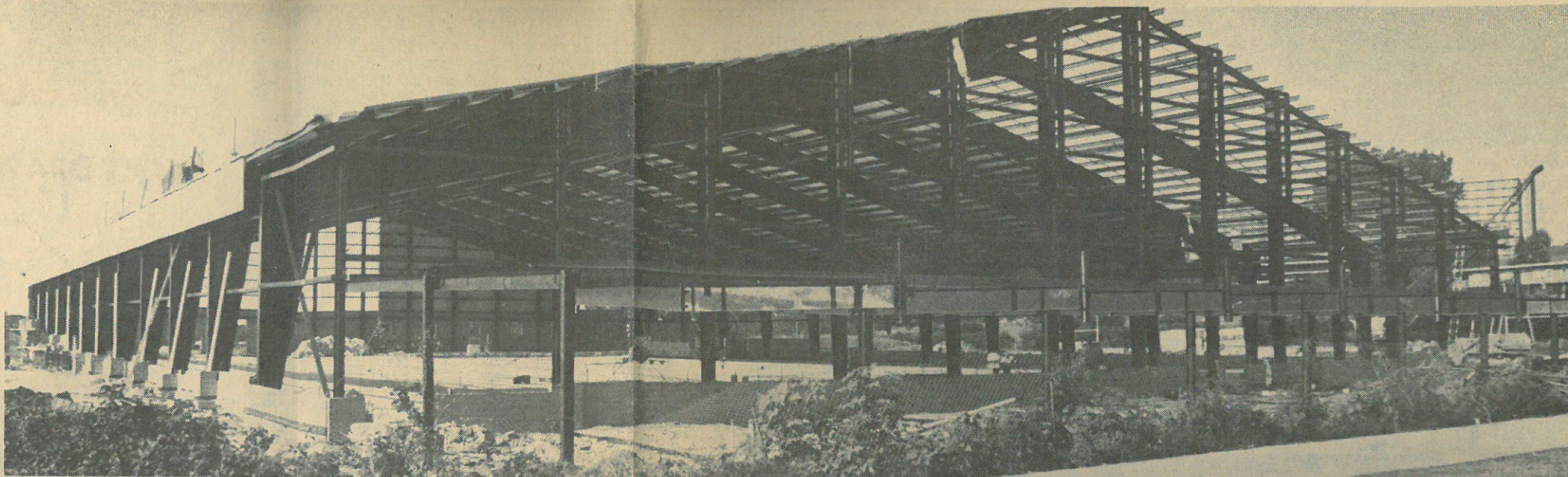
In the largest, an eight-story, \$12 million addition to Haworth Hall is taking shape on the southern ridge of Mount Oread. The addition will make Haworth the second largest building on campus, second only to Malott Hall.

When work is completed at the site on the north side of Sunnyside Avenue, the addition will house biological studies at the university, according to Wiechert. But that's not likely to come until fall of 1985.

Plans call for the addition to contain about 140 classrooms, laboratories and special purpose rooms, bringing the total space to 104,000 square feet.

THE ADDITION will be connected to Malott by a two-level 100-foot-long overhead walkway. Malott houses physical science programs and KU's School of Pharmacy.

The 1982 Kansas Legislature approved the funds for the addition, part of KU's long-range building



UNIVERSITY OF KANSAS HAWORTH HALL ADDITION

BUILDING FOR BIOLOGICAL SCIENCES

| | | | |
|-----------------------------|-------------------------------|----------|--------|
| ARCHITECTURAL SERVICES DIV. | JOHN B. HIPP AIA DIRECTOR | TOPEKA | KANSAS |
| ASSOCIATE ARCHITECT | PETERS, KUBOTA, GLENN P.A. | LAWRENCE | KANSAS |
| GENERAL CONTRACTOR | R.D. ANDERSEN CONST. CO. INC. | TOPEKA | KANSAS |
| MECHANICAL CONTRACTOR | HUXTABLE & ASSOCIATES INC. | LAWRENCE | KANSAS |
| ELECTRICAL CONTRACTOR | AMELCO ELECTRIC INC. | TOPEKA | KANSAS |

(Staff photos by Larry Funk)

Two current KU projects: At top, the Anschutz Sports Pavilion, a steel-framed building, has been going up rapidly this summer just west of Allen Fieldhouse. The \$12 million Haworth Hall addition will add to KU's biological science facilities.

Anschutz, of Denver, Colo., is covering nearly half the cost of the building, tabbed as an indoor workout facility for KU athletes.

ANSCHUTZ IS originally from Russell. He attended KU from 1929 to 1932, operating an oil and gas business after college and managing ranch properties.

KU officials haven't revealed the specific amount of Anschutz's gift

donations.

The one-floor facility is to be about 250 feet wide and 390 feet long, with a stone and brick facing to blend with the fieldhouse.

Inside, there will be a 70-yard artificial turf football field and a track with field event areas on its perimeter.

The building will also include seating for spectators.

DO YOU RECOGNIZE THIS STORE?



IT'S YOUR FULL SERVICE GIFT STORE

Wedding • Anniversary
Birthday • Baby Shower

Collections
723 Mass. St.

BRING THIS AD IN AND RECEIVE
20% OFF ANY REGULARLY PRICED ITEMS THRU AUG. 31

Does not pertain to holds or special orders



Expires 12-31-84



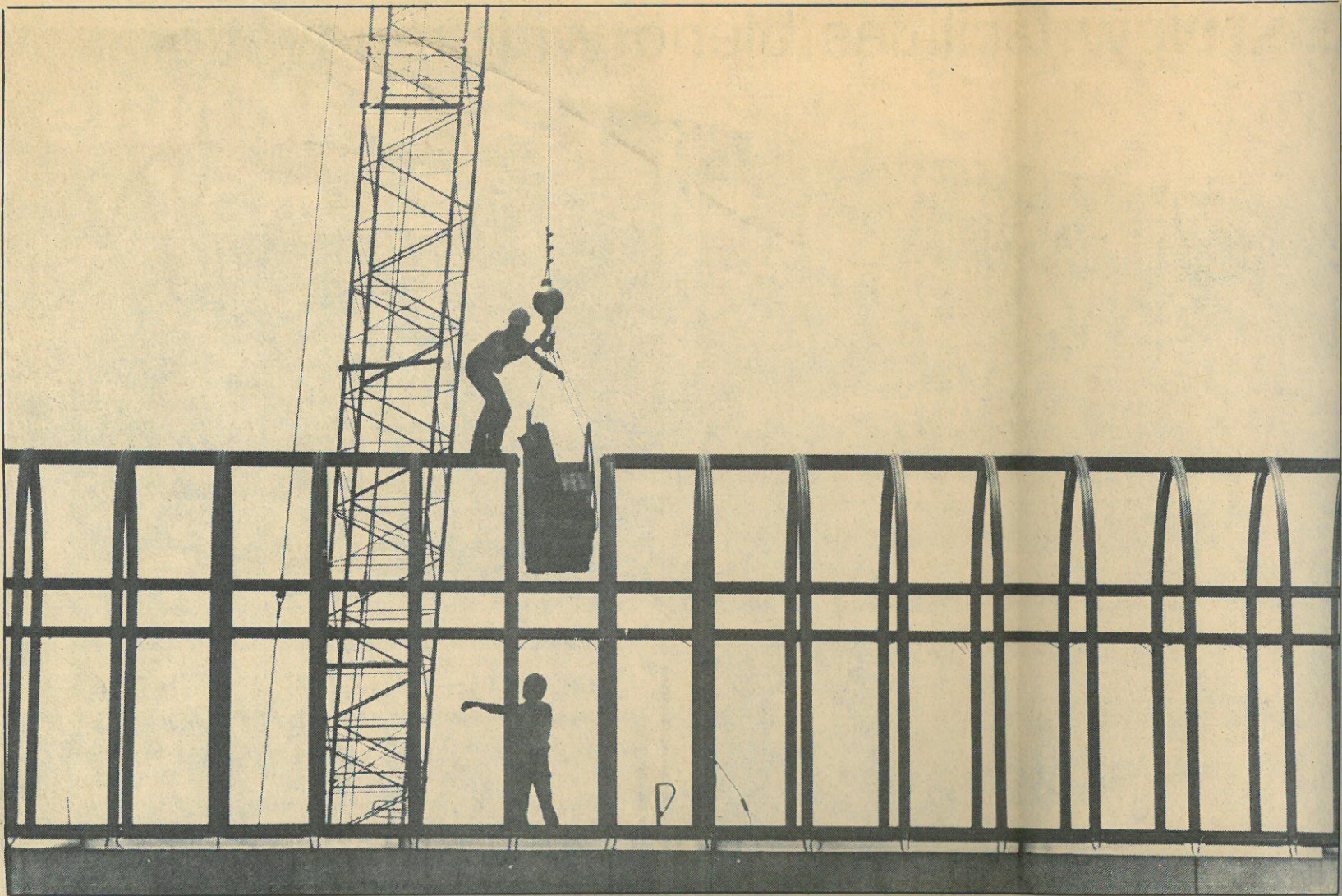
\$1.00 OFF
Any Double Pizzas

842-1212

NAME _____

ADDRESS _____

DATE _____



(Staff photo by Doug Bradley)

With help from a crane, workers assemble arches of a walkway between the Haworth addition and Malott Hall.

Building a future brick by brick

(Continued from page 15A)

the building this fall, Wiechert said.

Students in KU's School of Education are expected to reap the benefits this fall of a summertime project that replaced the old building's air-conditioning and heating systems, according to Wiechert.

The \$400,000 project in Bailey Hall was contracted by Piping Contractors of Kansas, based in Topeka, and financed mainly by funds the university had on hand.

"The old systems were completely worn out," Wieckert said.

Across Iowa Street, on the university's West Campus, another project is still under way.

CALLED A "small addition" by Wiechert, construction at the Botanical Research building is providing space for the university's herbarium and for botanical research.

Completion is targeted for September for the project, which is privately funded by the Bridwell Foundation.

The addition, holding 4,000 gross square feet, is costing about \$360,000, Wiechert said.

Looking into the near future at KU, officials are still working on plans for a major new science library, and are lining up funds for a \$6.5 million Snow Hall renovation.

The Kansas Union should also



(Staff photo by Larry Funk)

Dave Cathcart, left, and Dean Adams install ductwork in Bailey Hall this summer.

soon benefit from a planned facelift, to the tune of about \$4 million.

Wiechert said that project will be "phased in" to minimize inconveniences in the union, which receives heavy use from visitors, students and faculty.

D. Andersen Construction Topeka is the contractor. e southwest of the Haworth another big project has been taking shape this summer: chutz Sports Pavilion. officials announced plans for facility just west of Allen use in January.

A major donation by Fred B.



• Vending
2 Conven
For A
900 Missis

come