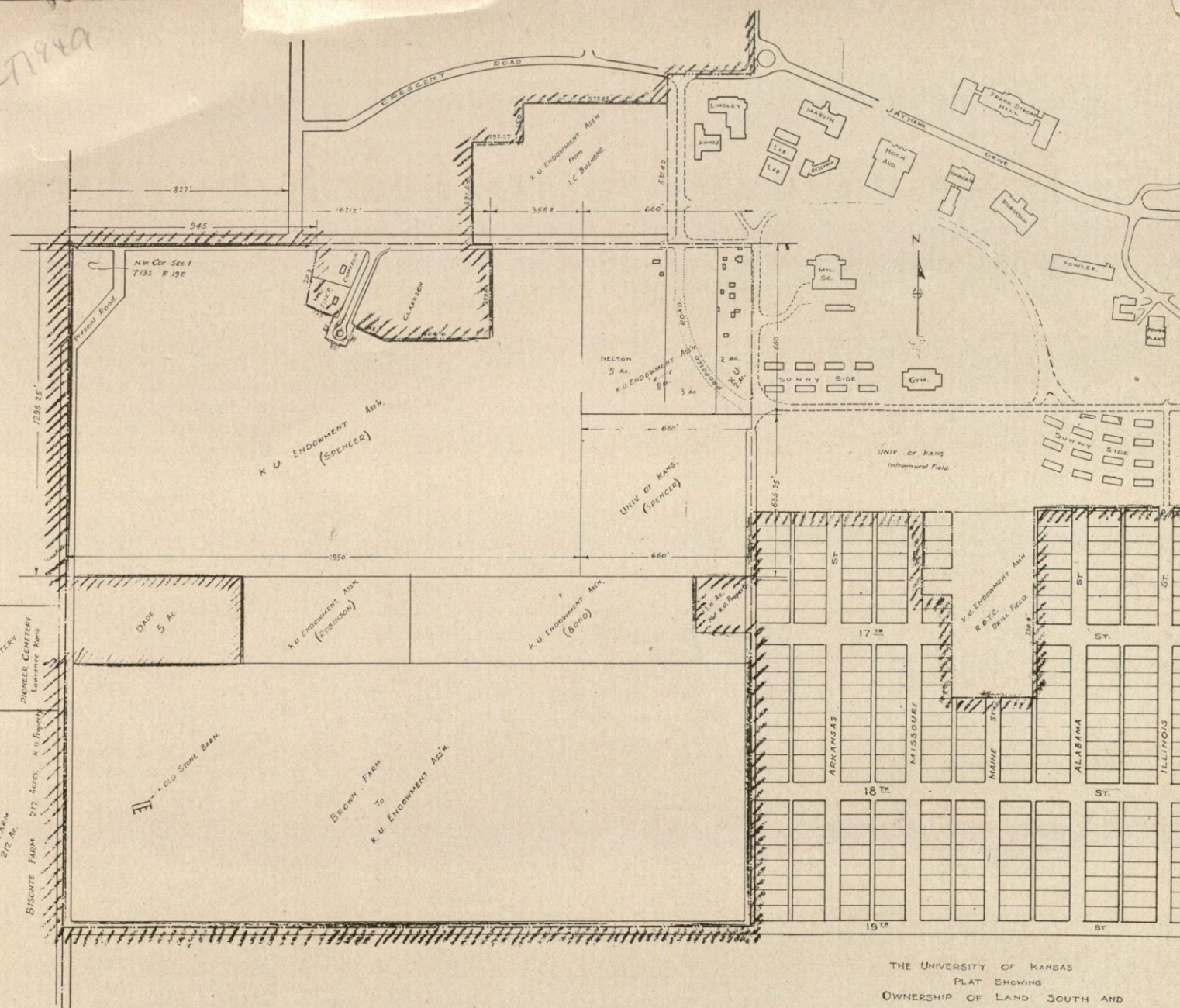


047949



THE UNIVERSITY OF KANSAS  
 PLAT SHOWING  
 OWNERSHIP OF LAND SOUTH AND  
 WEST OF UNIVERSITY CAMPUS  
 May 6-1945  
 F.A. RUSSELL  
 Lawrence, Kans.

HOW THE CAMPUS IS GROWING. All the open space in the lower left-hand corner of this chart is now part of the University of Kansas campus, most of it purchased by the K.U. Endowment Association in past recent months. Also, not shown on this map is another 212-acre addition, the Bisonte farm. All this lies to the southwest of the present campus, which is indicated in this drawing by diagrams of familiar buildings. Landmarks to distinguish the westward extent of these tracts are the old pioneer cemetery and the old stone barn, which will be remembered for its buttresses. Altogether, nearly 400 acres have been added. It is this area which will provide expansion for future additions.

# Enrollment Reaches 8,754

Mid-summer predictions of a 15 per cent drop in enrollment this fall proved to be an overestimate when the final figures were counted. The actual decrease in enrollment, as compared with last year, was less than 10 per cent. A total of 8,754 students enrolled for this 84th year, 434 of them at the School of Medicine in Kansas City.

The decline conforms with an expected slump in enrollment among veterans. While veterans, who total 3,626 this year, are 1,360 less than last year, the total enrollment is down only 999 from last year's record of 9,753.

This shows that the number of non-veterans is increasing. Another point of interest regarding veterans at K.U. is that one out of every eight is paying his own way.

Of the 8,754 students, 1,998 are new students. The ratio of men to women is 3.17.

Two schools, the Graduate School and the School of Education, have increased this fall. The College of Liberal Arts and Sciences remains at the largest school, with 3,308 students.

Enrollment figures for 1948 and 1949 are given below:

	ENROLLMENT by SCHOOLS	
	1948	1949
College	3,841	3,308
Engineering	2,180	1,700
Graduate	688	761
Business	889	707
Medicine	589	596
Fine Arts	589	541
Education	469	510
Pharmacy	241	221
Law	227	204
Journalism	150	133
Duplicate enrollments	—120	
<b>TOTAL</b>	<b>9,743*</b>	<b>8,681*</b>

\* Minus late enrollments.



0.124/  
Pent

FOR IMMEDIATE RELEASE

LAWRENCE, KAS., Aug. -- A leading nominee for the city's worst traffic bottleneck is being eliminated on the University of Kansas campus.

Buildings and grounds workmen, equipped with power shovel and pneumatic drills, are cutting away a portion of Mount Oread so that the Indiana street approach on the south slope can be widened.

The concrete street, normally 30 feet wide, gradually narrowed to 19 feet. The minimum width was at the steepest ascent and at a curve that was banked slightly outward rather than inward. The curve was also a "bling" one since the hill just west of Watson library blocked the view of drivers going up and down.

Not only will the street be widened to a full 30 feet all the way to Jayhawk drive, the main campus thoroughfare, but the vision-impeding hill is being leveled. Both projects involve the breaking up of a solid rock strata but the work will be completed when school starts next month.

Despite the heavy vehicular traffic on the dangerous curve, even minor accidents have been rarities.

ty/25Aug49

- KU -