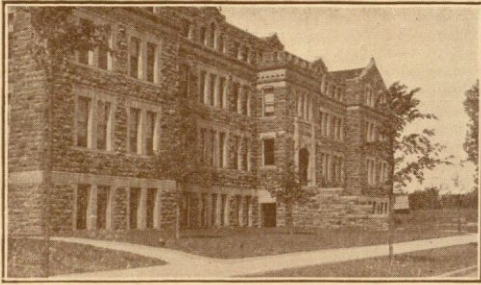


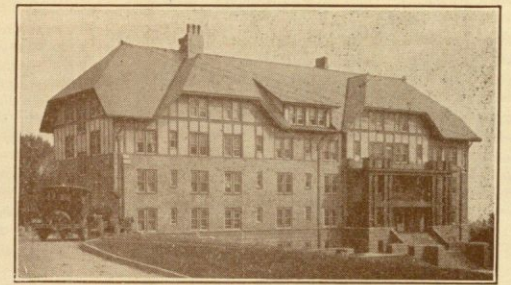
The University of Kansas

Lawrence

1929



Engineering Building



Woman's Dormitory

The University of Kansas

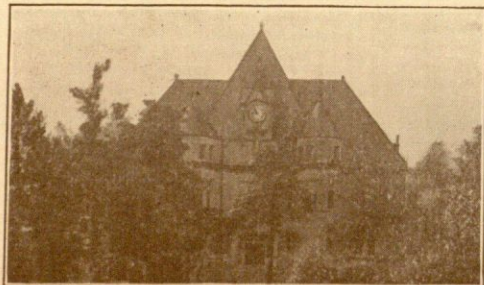
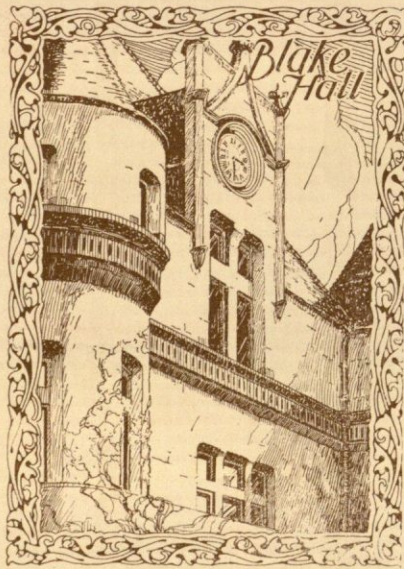
Founded at Lawrence; opened, September, 1866.

Now has campus of 160 acres at Lawrence; ten acres for the School of Medicine at Kansas City, Kan.

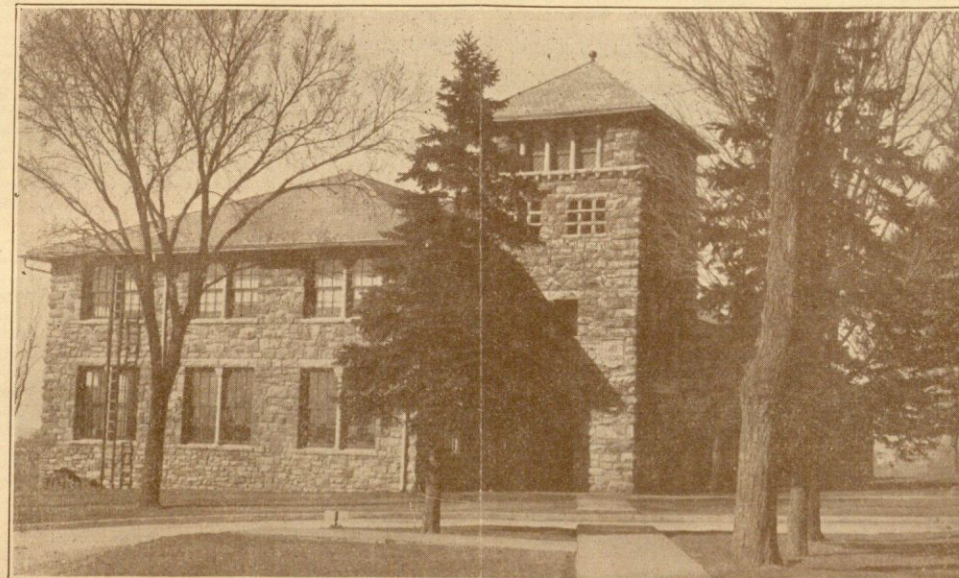
Has 22 major buildings at Lawrence; five large units for Medical School at Kansas City.

Winter registration at Lawrence exceeds 4,200; annual registration, exclusive of extension and correspondence classes is nearly 6,000.

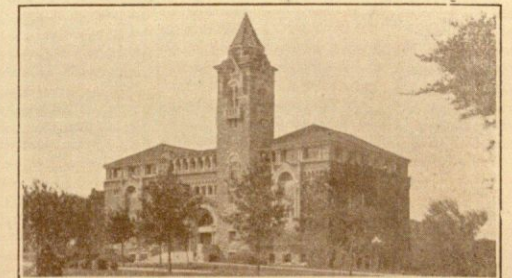
Exceptionally ably faculty—On science faculties, for example, one sixth listed in "Men of Science" are "starred men of science."



Blake Hall (Physics)



Fowler Shops



Dyche Natural History Museum

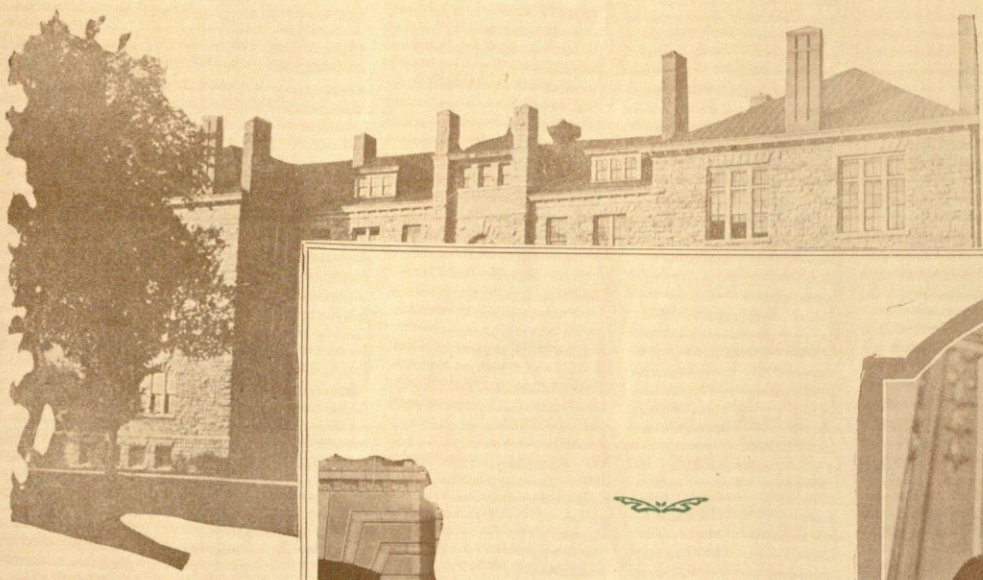


Bell Memorial Hospital

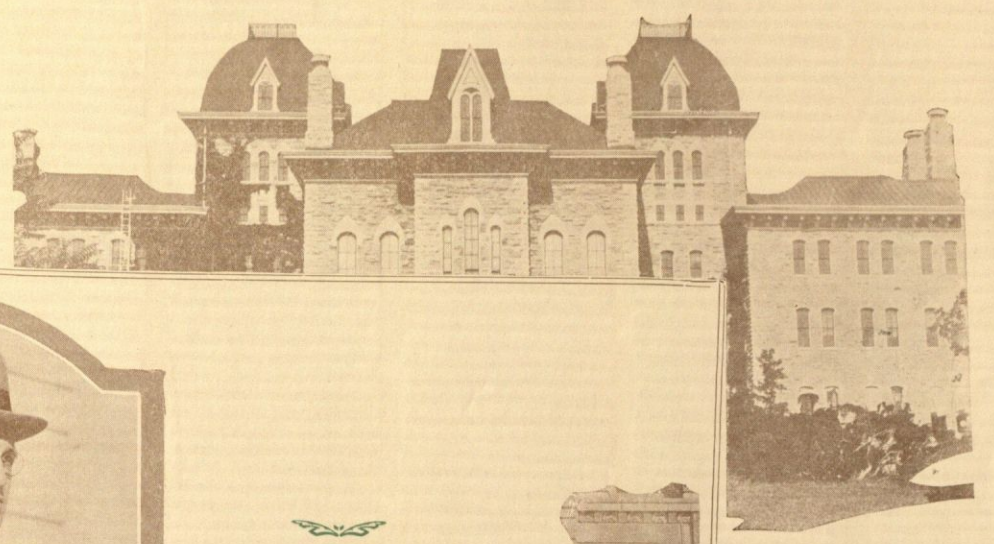
THE PICTURES herein are just a few, picked more or less at random, to give a faint idea of the scope of the University of Kansas, at Lawrence, and at Kansas City, Kan. Catalogs, and other information may be obtained by addressing GEORGE O. FOSTER, Registrar, Lawrence, Kan.



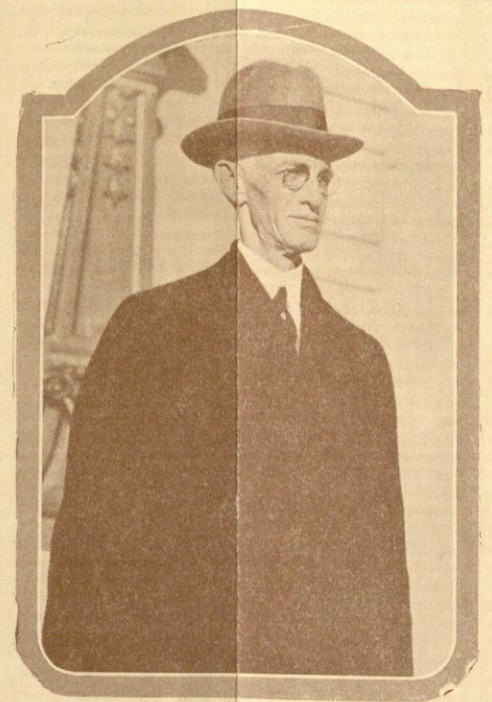
Shrines in Thayer Art Collection



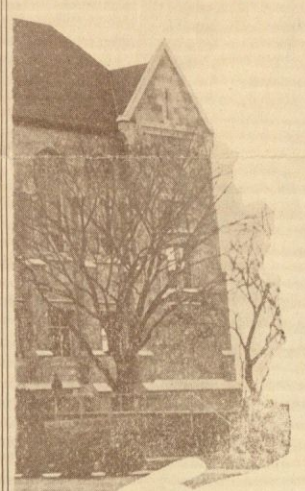
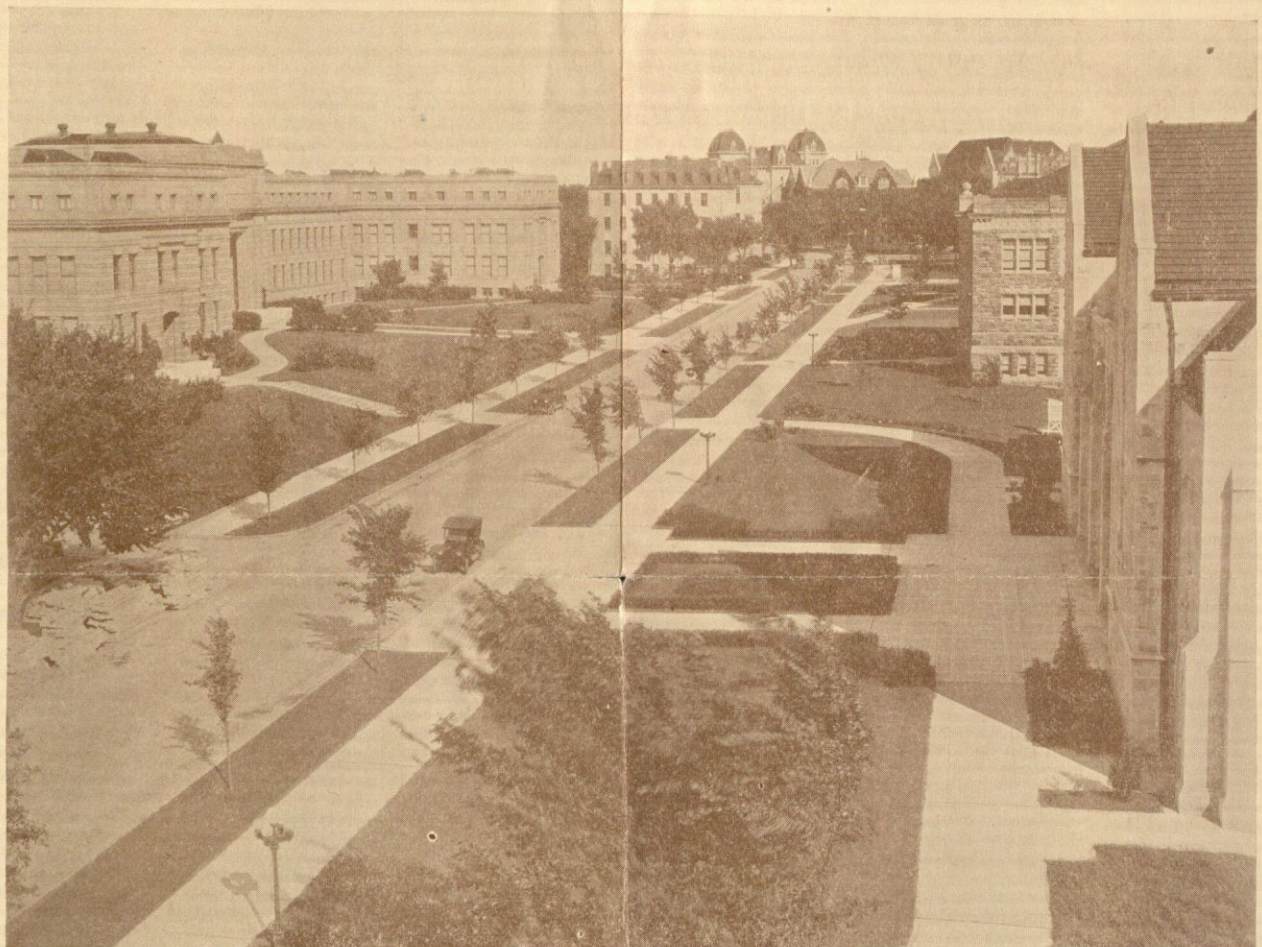
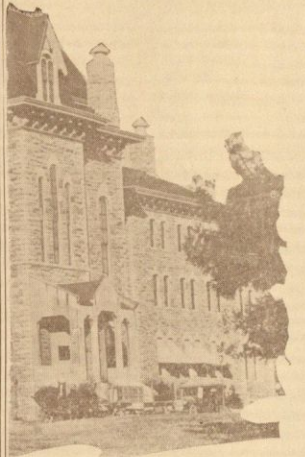
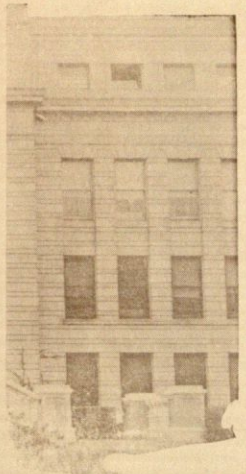
Chemistry



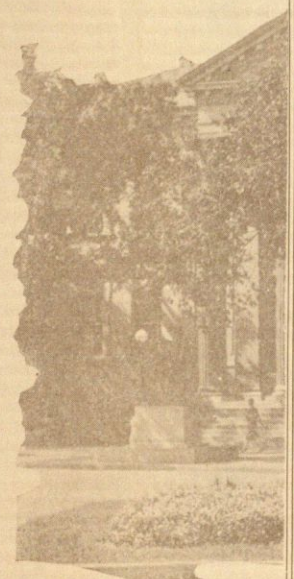
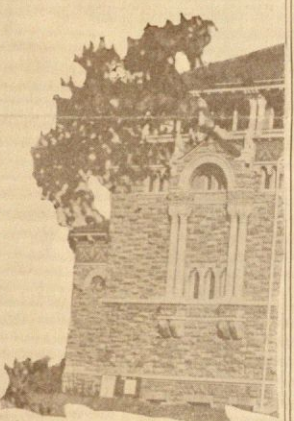
Fraser



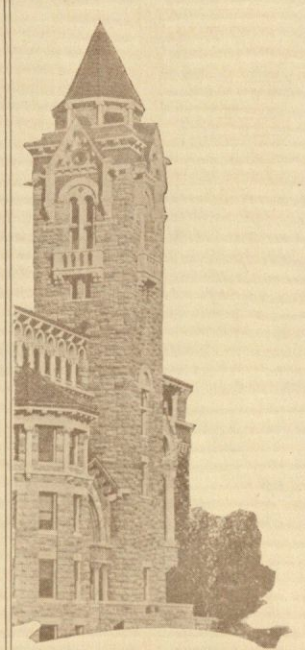
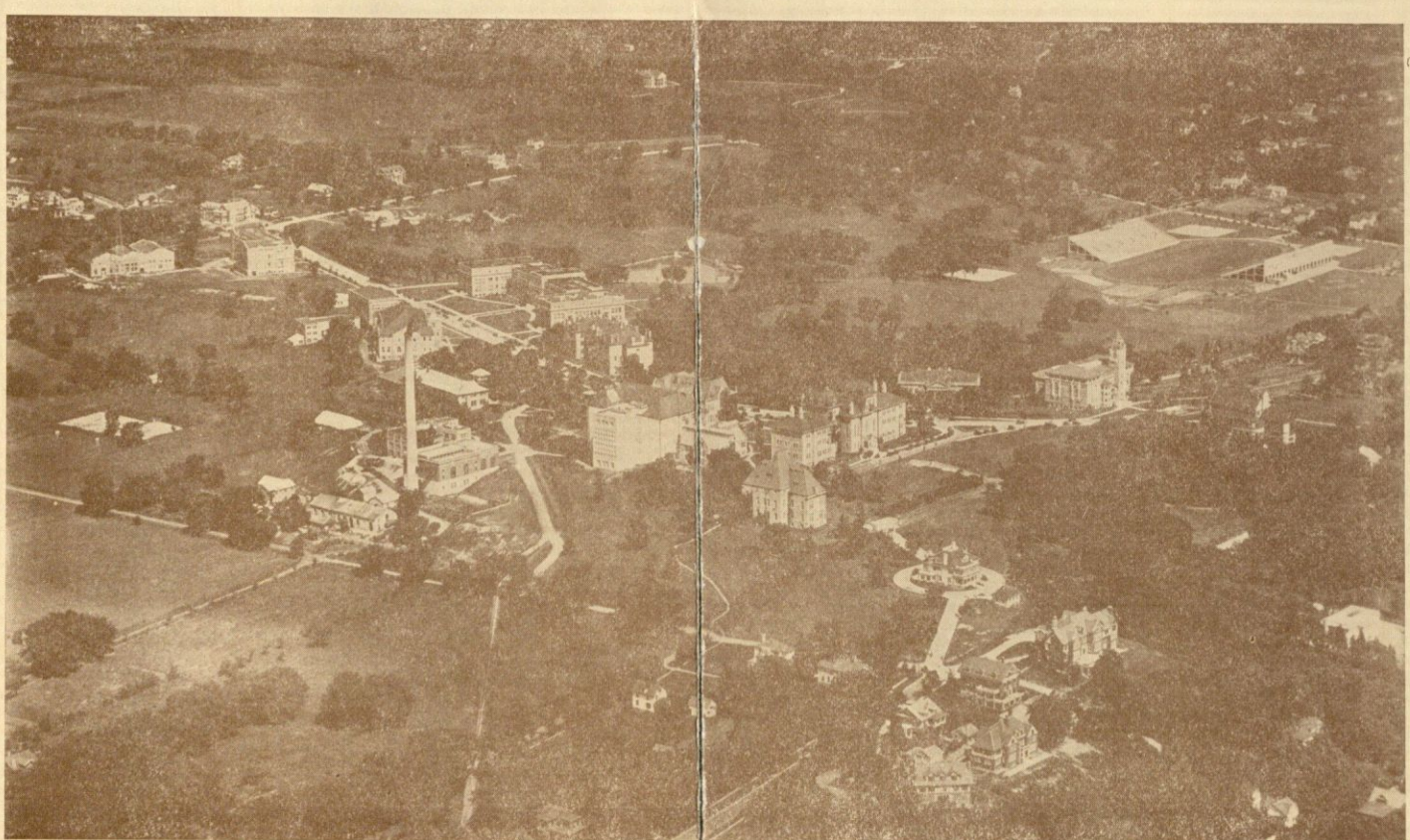
Chancellor F. H. LINDLEY



Library



Law



Dycbe

