

Sixty-Eighth
Annual Commencement
University of Kansas

Baccalaureate Services



The Memorial Stadium
Sunday, June 9, 1940
7:30 o'clock

† *P r o g r a m* †

PROCESSIONAL, "Grand Commencement March"

Arranged by *William Ward, '40*

UNIVERSITY OF KANSAS BAND

RUSSELL L. WILEY, Director

INVOCATION *THE REV. HOWARD E. KOELB*
Minister to the First Baptist Church

HYMN *Seymour*

Softly now the light of day
Fades upon my sight away;
Free from care, from labor free,
Lord, I would commune with Thee.

Thou, whose all-pervading eye
Naught escapes, without, within,
Pardon each infirmity,
Open fault and secret sin.

Soon, for me, the light of day
Shall forever pass away:
Then, from sin and sorrow free,
Take me, Lord, to dwell with Thee.

Thou who, sinless, yet has known
All of man's infirmity:
Then, from Thine eternal throne,
Jesus, look with pitying eye.

Amen.

SCRIPTURE READING *THE REV. H. LEE JONES*
Minister to the Unitarian Church

PRAYER *THE REV. EDWIN F. PRICE*
Minister to Students, Wesley Foundation,
and Dean, Kansas School of Religion

SONG, GLORIA IN EXCELSIS Don Dooley, '36
UNIVERSITY MEN'S GLEE CLUB
JOSEPH F. WILKINS, Director

BACCALAUREATE SERMON, "A Sense of
Responsibility" THE REV. JOHN CHARLES SCHROEDER
Professor of Homiletics and Pastoral
Theology, Yale University

HYMN Duke Street

O God, beneath Thy guiding hand
Our exiled fathers cross'd the sea;
And when they trod the wintry strands,
With pray'r and psalm they worshipp'd Thee.

Thou heard'st, well pleased, the song, the prayer,
Thy blessing came; and still its power
Shall onward, through all ages, bear
The memory of that holy hour.

Laws, freedom, truth, and faith in God
Came with those exiles o'er the waves;
And where their pilgrim feet have trod,
The God they trusted guards their graves.

And here Thy name, O God of love,
Their children's children shall adore,
Till these eternal hills remove,
And spring adorns the earth no more. Amen.

BENEDICTION THE REV. DUNCAN E. MCGREGOR
Minister to the Evangelical Church

RECESSIONAL, "ONWARD KANSAS" Jack Laffer, '39
Arranged by WILLIAM WARD, '40
THE UNIVERSITY BAND

COMMEMORATION SERVICE

FOR THOSE WHO HAVE DIED DURING THE
YEAR AND WHO BY THEIR LIVES BROUGHT
HONOR TO THE UNIVERSITY OF KANSAS



HOCH MEMORIAL AUDITORIUM
TWO O'CLOCK, SUNDAY, JUNE NINTH
NINETEEN HUNDRED FORTY



Professor Charles S. Skilton at the Organ

“O, REST IN THE LORD” *Mendelssohn*
Helen Peters

“LARGO” *Handel*
Reading of Memorial List, Allen Crafton

“BE THOU FAITHFUL UNTO
DEATH” *Mendelssohn*
Clayton Krehbiel

VIOLONCELLO OBBLIGATO
Jack Stephenson



*O may I join the choir invisible
 Of those immortal dead who live again
 In minds made better by their presence: live
 In pulses stirred to generosity, in deeds of daring
 rectitude, in scorn
 Of miserable aims that end with self, in thoughts
 sublime that pierce the night like stars,
 And with their mild persistence urge man search
 To vaster issues. So to live is heaven.*

—George Eliot.



Samuel Ainsworth
 Clara Wilson Albright
 Florence Hendry Alford
 Joseph Savage Alford
 Elijah S. Andis

Willis G. Banker
 Ferdinand G. Bartel
 Joshua William Beede
 Angie Scammon Black
 Anna Murphy Blandford
 Elmer Elia Bloom
 William Edwin Borah
 Fred H. Bowersock
 Charles E. Branine
 Burtis Breese
 Ray Ambrose Brown
 Jessie M. Arter Busch

F. D. Candler
 John E. Carlson
 Ralph E. Chadwick
 Annis Francena Chaffee
 May Rush Coleman
 Herbert M. Cowan
 Manuel H. Curts

Charles Leland Davies
 Elizabeth Burchard Davis
 Ova Partis Davis
 John Heins Degen
 Paul Adam Diehl
 Paul Addison Dinsmoor
 Earl Marcus Doll
 Charles Prentice Donald
 Thomas Francis Doran

Eleanor Draper
 Lloyd Duffee

Daniel Else
 John Hubert English
 Frank Exline

Abijah Fairchild
 Louise Smith Farrell
 Willis Harry Finrock
 Hugh Thomas Fisher
 Ray D. Fraker
 A. Markle French
 Charles S. Fulton

Clara S. Gillham
 Nettie Goodell
 Nicasio G. Gonzalez
 Ella Pearson Granger
 Edward W. Greenlee
 John Knox Greenlee
 Wylie R. Griffin
 W. A. Griffith
 George F. Guthrie

Sammye Hall
 Billy Scott Hamilton
 Alvin Bert Harrison
 Marguerite Barnes Hart
 Holly E. Hayes
 Frank Cecil Heariold
 Thomas H. Hooper
 Charles R. Hoyt
 Arthur E. Huddleston
 Jeannette Oliver Humphrey

Edward P. Irwin

Florence Hale Jones
John Jackson Jones
Walter Casius Jones
Lee Judy
Robert J. Justice

Charles C. Kehl
Florence Finch Kelly
J. F. Kimball
Pearl Bradford Kimble
Charles V. King
Phil Knowlton
Harold Phillip Kuhn

Amy Langworthy
Sadie Cooper Lawson
Vera Marjorie Simmons Lehman
Zoe Leis
Julien Liepman
John Edward Linsheid
Nancy Longenecker

Mary Myers Marshall
Robert James McClure
Laura E. Rose Middleknuff
Clyde Winwood Miller
Esther Mitchell
Quincy Brady Mitchell
Rolla Mitchell
Robert Merritt Morris
Pearl Fuller Mundis

James Naismith
Guy Olen Neal
Oak Nevitt
Edith Achning Noll
Glennys Hilts Noonan

Ralph T. O'Neil
Paul J. Ost

Nellie Griswold Beatty Palmer
Wade Roscoe Parks
Edward W. Patterson
Larry M. Peace
Ralph Pfouts
Carl E. Phillips
Augusta Hannah Pierson
Marion Pinkham
William Pirschell
George Plummer

Issie Brander Potts
Burton Homer Pugh

Amos Quinlan

Albert Earl Reed
William Henry Reynolds
John Jacob Rhodes
Ella B. Ridenour
Mariam Sheldon Ripley
A. A. Rodgers
Ames Rogers
R. F. Roller
George A. Rush
Roy Dean Russell

Edwin Parker Sample
Lizzie Flora Farr Schmucker
Lottie Blanche Skofstad
Helen Blair Smith
Henry Fremont Smith
Richard Cecil Smith
Wayne Bowers Smith
Jack Albert Spencer
Earl Stanton
Robert Lowrey Stewart
Samuel V. Stewart
Ella Dougherty Still
Clarence Cristopher Swarens

Lucy E. Gleason Tabor
Harold James Terrill
David J. Teviotdale
Henry S. Tremper

Vera Atkinson Veatch

Edmund Kurt Walter
Clarence L. Waring
Henry Clay Waters
William J. Watson
Fred C. West
Harriet Williams Whitehill
Russell Whitman
Ray Wick
Elizabeth Bethers Wilcox
Roy O. Willett
George Weldon Wolf
Lorna Millikin Wood
Charles P. Woodbury

The Sixty-Eighth Annual

COMMENCEMENT



UNIVERSITY OF KANSAS, LAWRENCE

UNIVERSITY OF KANSAS
LAWRENCE

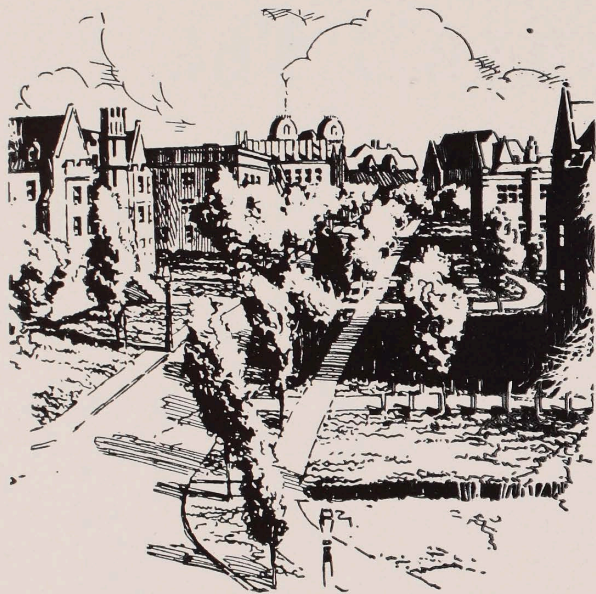
GENERAL PROGRAM

of Events, Forums, Exhibits



Sixty-eighth Annual
COMMENCEMENT

June 7 to 10, 1940



THE UNIVERSITY OF KANSAS

Commencement, 1940

Seventy-four years ago, on September 12, 1866, the doors of old North College were first opened, to admit a preparatory class of fifty-five young people. Seven years later, in 1873, the University held its first Commencement Exercises, graduating three young men and one young woman out of this first class.

This year the University will observe its sixty-eighth annual Commencement with a class of more than a thousand young men and women eager to step out and make a place for themselves in the world,—a thousand young men and women trained in the arts and sciences, trained for business and for the professions.

This Commencement also marks the end of the University's first year under the administration of Deane W. Malott, who was graduated from the University in 1921, and who, on July 1, 1939, became its eighth Chancellor.

Programs of the Commencement events, the Commencement Forums and Exhibits, together with details of the celebration next year of the Diamond Jubilee of the founding of the University, are given on succeeding pages of this general program.

The University points with particular pride to the establishment this year of three dormitories providing for one hundred and eighteen self-supporting men students. A detailed description of these dormitories is also included in this program.



Board of Regents

FRED M. HARRIS,
Chairman,
Board of Regents.

COMMENCEMENT WEEK PROGRAM

FRIDAY, JUNE 7

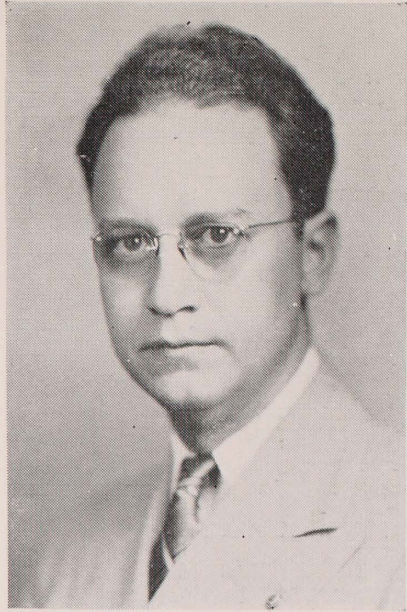
8:00 p.m. Commencement Recital, School of Fine Arts, Hoch Auditorium.

SATURDAY, JUNE 8

- 10:00 a.m. Alumni Registration opens, Memorial Union.
- 1:00 p.m. Golf for Visiting Alumni, Lawrence Country Club.
- 3:00 p.m. Baseball, Class of 1940 vs. Alumni-Faculty.
- 3:30 p.m. Panel-Forum, "America Looks at Europe's War." Prof. John Ise, Prof. H. B. Chubb, and Dr. Lyle S. Powell. Fraser Theatre.
- 4:00 p.m. Engineers' Annual Meeting, Marvin Hall.
- 5:30 p.m. Torch Chapter of Mortar Board Annual Reunion Dinner, Evans Hearth.

The Governor

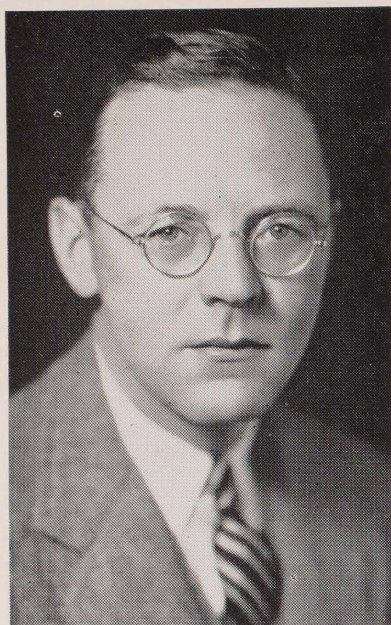
PAYNE H. RATNER
Governor,
State of Kansas.



- 6:00 p.m. Sachem Powwow, Memorial Union Building.
- 7:30 p.m. Open Air Band Concert, Campus North of Library.
- 8:30 p.m. University Reception, Memorial Union.
- 9:30 p.m. Alumni-Senior Reunion Dance, Memorial Union.

SUNDAY, JUNE 9

- 11:00 a.m. Commencement Services in all Lawrence Churches.
- 12:30 p.m. Class of 1890 Dinner, Evans Hearth.
- 2:00 p.m. Open House at all University Buildings.
- 2:15 p.m. Commemorative Service, Hoch Auditorium.
- 3:30 p.m. Premiere Showing K.U. Movies, Hoch Auditorium.
- 4:00 p.m. Open Air Band Concert, Fowler Grove.
- 4:30 p.m. Class Reunions, Memorial Union.
- 7:00 p.m. Baccalaureate Services, Memorial Stadium.



Baccalaureate

DR. JOHN CHARLES SCHROEDER,
 Professor of Homiletics and Pastoral
 Theology, Yale University.

BACCALAUREATE SERVICES

PROCESSIONAL, "Grand Commencement March,"	
	<i>Arranged by William Ward, '40</i>
INVOCATION	THE REV. HOWARD E. KOELB Minister to the First Baptist Church
HYMN	Seymour
SCRIPTURE READING	THE REV. H. LEE JONES Minister to the Unitarian Church
PRAYER	THE REV. EDWIN F. PRICE Minister to Students, Wesley Foundation, and Dean, Kansas School of Religion
SONG, "GLORIA IN EXCELSIS"	Don Dooley, '36
BACCALAUREATE SERMON "A Sense of Responsibility"	
	THE REV. JOHN CHARLES SCHROEDER Professor of Homiletics and Pastoral Theology, Yale University
HYMN	Duke Street
BENEDICTION	THE REV. DUNCAN E. MCGREGOR Minister to the Evangelical Church
RECESSIONAL, "Onward Kansas"	Jack Laffer, '39

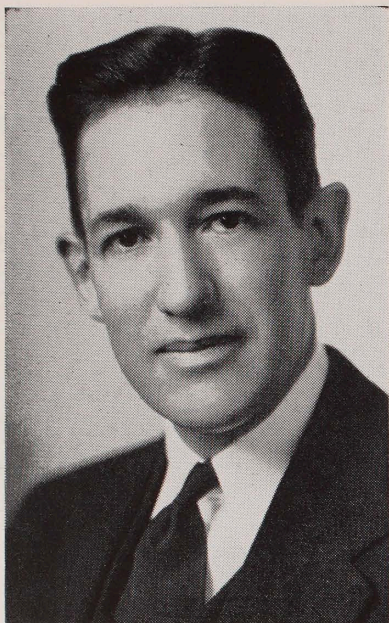
Alumni Speaker

WILLIAM ALLEN WHITE, fs'90,
Editor Emporia Gazette.



MONDAY, JUNE 10

- 7:15 a.m. Class of 1940 Breakfast, Memorial Union Bldg.
- 7:45 a.m. Strawberry Breakfast, Henley House, for all past and present Y.W.C.A. members.
- 9:45 a.m. Annual Alumni Association Meeting, Fraser Hall. Address by William Allen White.
- 12:15 p.m. University Luncheon, Memorial Union.
- 3:30 p.m. Endowment Association Trustees Meeting, 303-b, Frank Strong Hall.
- 3:30 p.m. Symposium, "Industrial Expansion in Kansas." Dr. R. C. Moore, Professor of Geology and Director of the Kansas State Geological Survey; W. C. McNown, Professor of Civil Engineering; and John H. Ruckman, Consulting Engineer. Fraser Theatre.
- 4:00 p.m. Phi Beta Kappa annual meeting, Spooner Thayer.
- 7:00 p.m. Commencement Exercises, Memorial Stadium.

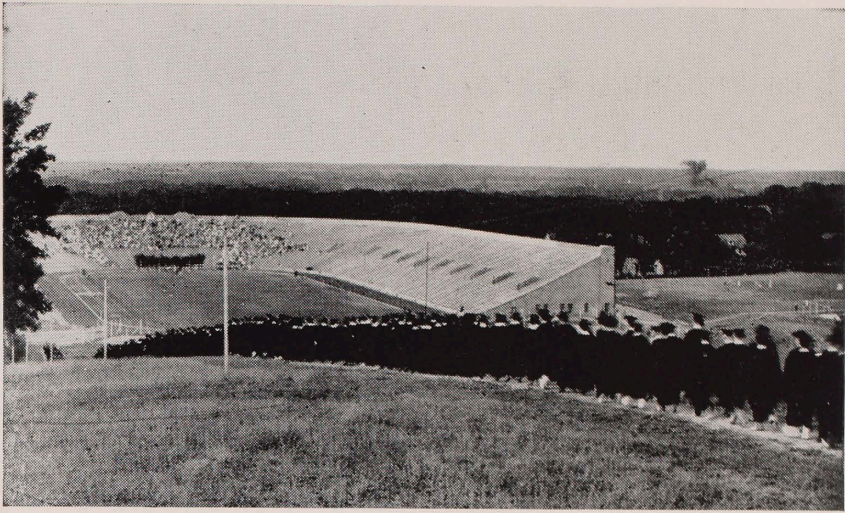


Commencement

DEANE W. MALOTT,
Chancellor,
University of Kansas.



W. T. MARKHAM
Official Representative,
Board of Regents.



COMMENCEMENT EXERCISES

PROCESSIONAL:

“Grand Commencement March,” Arranged by *William Ward*

THE UNIVERSITY OF KANSAS BAND

RUSSELL L. WILEY, *Director*

INVOCATION: THE REV. HAROLD G. BARR
Minister to the First Christian Church

GREETINGS: THE HONORABLE PAYNE H. RATNER
Governor of the State of Kansas

GREETINGS: THE HONORABLE W. T. MARKHAM
Member of the Board of Regents

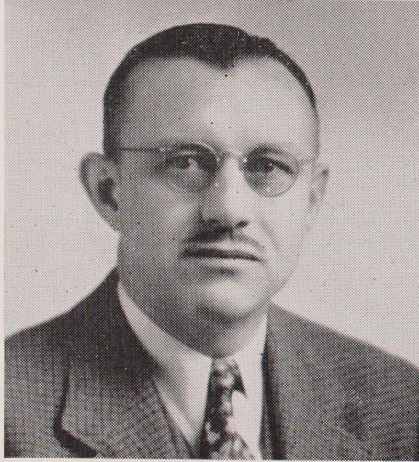
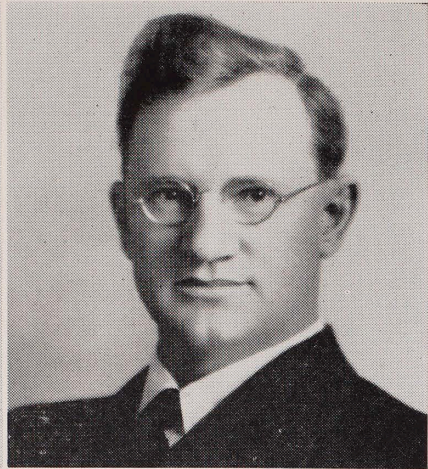
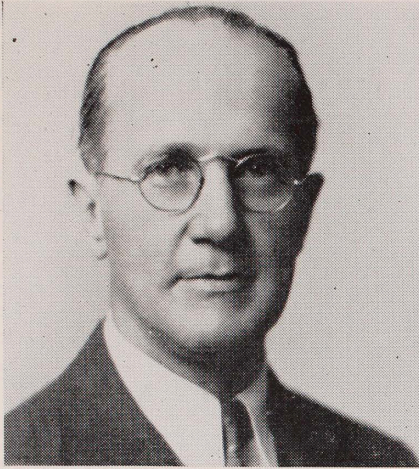
CONFERRING OF DEGREES: CHANCELLOR DEANE W. MALOTT

PRESENTATION OF DIPLOMAS, THE HONORABLE FRED M. HARRIS
Chairman of the Board of Regents

BENEDICTION: THE REV. ALFRED J. BELL
Minister to the Trinity Lutheran Church

THE CRIMSON AND THE BLUE: Led by DONALD M. SWARTHOUT
Dean of the School of Fine Arts

RECESSIONAL: “Tramp, Tramp, Tramp” *Victor Herbert*
THE UNIVERSITY OF KANSAS BAND



COMMENCEMENT FORUMS

International, state, and campus topics are the subjects of the three Commencement Forums this spring.

Arranged by Prof. E. O. Stene of the political science department, these Forums are intended for alumni, parents of graduating seniors, faculty members, and other patrons of the University. They have been planned to be both educational and entertaining.

"America Looks at Europe's War." A panel discussion in Fraser theatre, 3:30 o'clock Saturday afternoon, will have the following speakers:

H. B. Chubb, associate professor of political science and lecturer on international affairs.

John Ise, professor of economics and well-known lecturer and author on economic subjects.

Dr. Lyle S. Powell, Lawrence physician, colonel in U.S. reserve medical corps, aviator in World War, and world traveller.

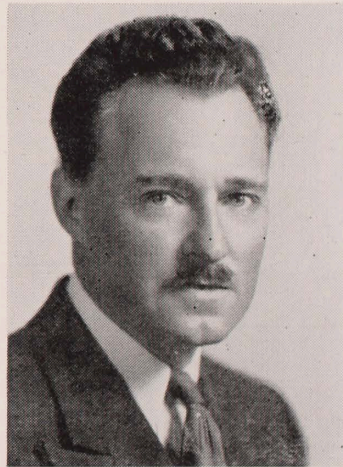
"Far Above the Golden Valley," premiere showing of new K.U. movie, 3:30 o'clock Saturday afternoon, Hoch auditorium. This movie was written and directed by Prof. Allen Crafton of the speech and dramatic art department and all roles were taken by students.

"Industrial Expansion In Kansas." A speech symposium in Fraser theatre, 3:30 o'clock, Monday afternoon, will have the following speakers:

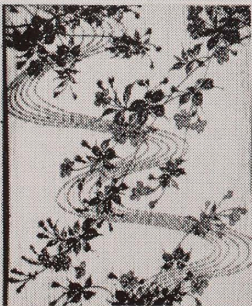
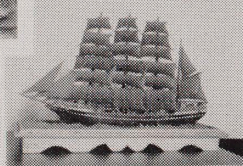
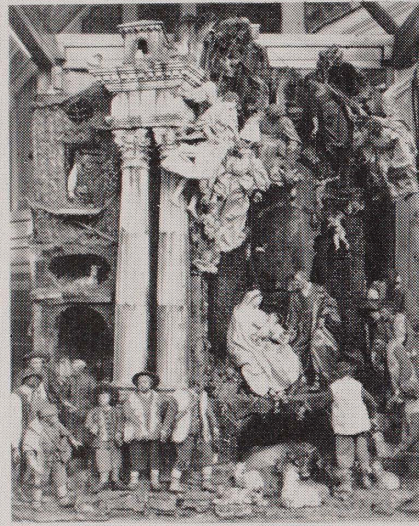
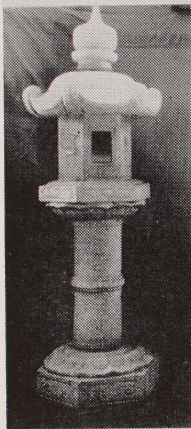
R. C. Moore, professor of geology and director of the Kansas State Geological Survey.

W. C. McNown, professor of civil engineering.

John H. Ruckman, Topeka, industrial engineer.



ON OPPOSITE PAGE, READING FROM TOP TO BOTTOM, LEFT TO RIGHT, ARE DR. R. C. MOORE, PROF. JOHN ISE, PROF. W. C. MCNOWN, PROF. H. B. CHUBB, DR. LYLE S. POWELL, AND MR. JOHN H. RUCKMAN. ABOVE, PROF. ALLEN CRAFTON.



COMMENCEMENT EXHIBITS

MEMORIAL UNION

The Memorial Union, where Commencement registration headquarters are maintained, is the center of student social life and is always the place where alumni meet when they return. In addition to the main lounge, it has a beautiful ballroom on the second floor; three distinctive banquet and meeting rooms, as well as a music room with a Carnegie set of records and player, on the third floor; a cafeteria, with group dining room in connection, on the level below the main lounge; and a soda fountain, and student offices on the Mississippi street level below the cafeteria. A special hostess will be on duty on the music room floor during the Commencement period. The Union is a gift to the University from alumni as part of the World War Memorial. The other part of the memorial is the Stadium. Recent classes and other groups have helped finish the Union.

DYCHE MUSEUM OF NATURAL HISTORY

Rapid progress is being made on the reconstruction of Dyche Museum of Natural History, but the building will not be open at this Commencement season. When finally completed Dyche Museum will house one of the most complete and elaborate collections of mammals and birds of its kind in any college museum in America.

SPOONER-THAYER MUSEUM OF ART

The Thayer Collection of Art, gift of Mrs. W. B. Thayer as a memorial to her husband, is displayed on the three floors of Spooner-Thayer Building.

The exhibits on the main floor include a rare and interesting group of eighteenth century Italian figures; carvings of lacquer, ivory, jade, crystal and amber; Oriental rugs, brocades and embroideries; pewter, copper, bronze and silver; pottery, porcelain and glass from many countries; and several types of furniture. A library of books on art, history and travel is in the north-west room of this floor. Also in this room is the stamp collection pre-

sented last year by Harriet Greissinger Brown, fa'95. In the southwest room are the Martin Memorial windows; the 18th century English porcelain and pottery, given by Mr. and Mrs. F. P. Burnap, of Kansas City; 18th century furniture; and some porcelain and pottery from the Thayer Collection. Two cases of manuscripts and old books from the collection of F. B. Dains may be seen in the central room.

The galleries on the second floor display paintings and prints, musical instruments and furniture. The permanent collection of paintings by American artists occupies the central gallery. In the south gallery is an exhibition of sculpture by Bernard Frazier, fa'29, of the Department of Design. A group of 16th century line engravings from the Marvin collection, recently presented to the Museum by George March, '08, and Mary Atkinson March, fs, will be on view in the north gallery. In a case in this room is a copy of the Kelmscott Edition of the Works of Chaucer, designed by William Morris, and often called the most beautiful book in the world. There is also a page from the first Caxton edition of *The Canterbury Tales*. These are a loan from the collection of Chester Woodward, '96, of Topeka.

The ground floor contains the collection of American Indian Art, American coverlets, hooked rugs, dolls, and some Colonial furniture; also examples of quilt blocks from the Hall Collection of Quilt Patterns, and some Persian, East Indian, and Paisley Shawls. There is a special exhibit of shoes from many countries presented some years ago by Anne Wilder, fs'96.

Illustrated on page 12 are a bronze Buddha, two Lafayette plates, a copper lustre pitcher, Japanese Stone Lantern, an Italian arrangement of Presepe figures of the Nativity, Enoch Wood's Diana, a Staffordshire Bust of Washington, an old blue plate and sugar bowl, a model of a Clipper Ship, a Japanese Stencil, and Italian Presepe Wandering Minstrels. These are only a few of the thousands of interesting things on display in the Museum.

FRASER-WILCOX CLASSICAL MUSEUM

The Wilcox Museum of Classical Antiquities is found in the south wing, second floor, rooms 206, 208, 210, Fraser Hall. The collection contains several reliefs, fifteen full-sized plaster casts, illustrating Greek and Roman sculpture, and a dozen slabs of the north frieze and twenty of the east frieze of the Parthenon.

The museum contains a good-sized collection of specimens of building stones used in Roman structures; inscriptions, vases, lamps, cinerary urns, lock and keys, articles of dress, and specimens of Roman glass. In addition there are numerous photographs illustrating Greek and Roman topography and life, and many other interesting exhibits of classical antiquities. The aim of the museum is to make more vivid the life of ancient times.

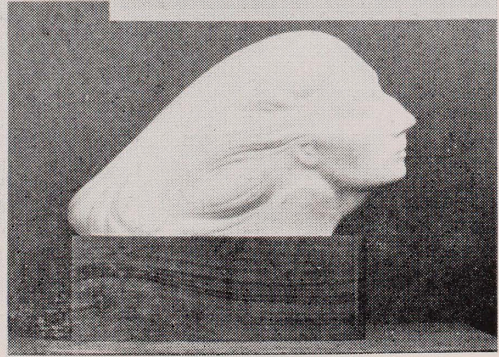
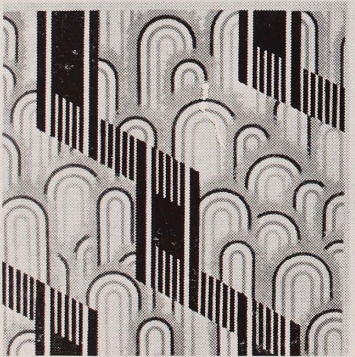
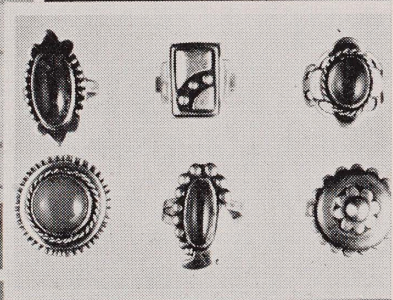
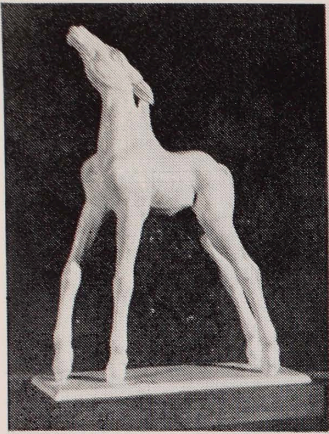
WATSON LIBRARY

The University Library contains some 310,000 volumes catalogued and classified, and a large amount of unbound and uncatalogued material. The library receives more than 2,300 different periodicals and publications of learned societies either through purchase, gift, or exchange. At present, the volumes are housed under crowded conditions, and the Library is badly in need of more shelf space.

The special exhibits to be seen this year are: Facsimiles of historical letters by Napoleon, Nelson, Louis XVI and others, on the second floor; and an exhibit of early maps of North America from the Vollbehr collection on the third floor.

REFERENCE ROOM OF WATSON LIBRARY





BAILEY CHEMICAL LABORATORIES

The departments of Chemistry, Biochemistry, and Chemical Engineering, and the School of Pharmacy are housed in the Bailey Chemical Laboratories. These divisions have prepared several exhibits, and guides will be available for showing and explaining the exhibits and for special demonstrations.

Production of Liquid Air and demonstration of its most striking properties, Room 7, basement.

The laboratories of the Chemical Engineering Department are located in rooms 24, 24D, 24E, 24H, 24I, in the basement of Bailey Chemical Laboratory. Equipment installed in rooms 24 and 24E is used in teaching the principles of the Unit Operations of Chemical Engineering and Process Development. The Fuels and Lubricants laboratory is located in room 24I. These laboratories are well equipped, but further development is not possible because of insufficient housing facilities. A modest beginning has been made in research activities which is supported by industry and the state. The close linkage of this department to industry is of direct benefit to student body and staff. Further development in this direction also depends on more laboratory space.

FRANK STRONG HALL—FINE ARTS

The third floor of the Frank Strong Hall is given over to the Department of Design (West Strong Hall) and Department of Drawing and Painting (East Strong Hall). Exhibitions of student work may be seen in the various class rooms and corridors on this floor. The exhibitions of current art work, illustrated on opposite page, are by students of the Department of Design and include textiles, wall papers, posters, pottery, jewelry and metal work, woodcarving, bookbinding, art in industry and public school art projects. These may be seen in rooms 308, 310, 314, 316, 320 and in the corridors of West Strong Hall. The exhibitions of current art work by students of the Department of Drawing and Painting may be seen in room 325 and in the corridors of East Strong Hall. Room 323 houses the Brynwood Collection of Paintings lent to the University by Mr. Chester Woodward of Topeka.

HAWORTH HALL

Haworth Hall houses a fine collection of minerals, rocks and invertebrate fossils. The minerals may be seen in room 102. A special and spectacular exhibit of fluorescent minerals is on display in Room 5.

The paleontological collections contain more than 250,000 specimens of invertebrates representing fossiliferous rocks from the oldest to the youngest, both from Europe and North America, and an extensive collection of coal measures, Cretaceous, Tertiary plant fossils. Exhibits of invertebrate fossils arranged according to geological age and biologic classification are displayed.

Special attention is directed to the Geological map and the topographic relief model of Kansas hung on the east and west walls of the ground floor. On the east wall of the upper floor is a large and excellent geologic cross-section of Kansas, showing all the formations cropping out at the surface and underground across the state from east to west. Attention is called also to an oil well derrick built to scale, and several models showing mining operations underground.

The new Department of Petroleum Engineering is situated in the northeast portion of the basement. At present, facilities are available to care for 12 students during a single laboratory period. Equipment has recently been purchased or constructed for complete core analysis and for high pressure gas-liquid investigations. A natural gas laboratory is situated in the south section of the basement, where the research work is conducted and where complete analyses of hydrocarbon gases may be made, precise temperature control utilized, and intermediate pressure studies safely conducted.

The Department of Mining and Metallurgical Engineering displays the equipment used in concentrating ores and in assaying them, also the methods used in the microscopical examination of metals and alloys. There is an interesting exhibition of metals and of models of underground mining methods.

The Ceramics laboratory is in the extreme south part of the building.

SNOW HALL

Snow Hall is the home of the Bacteriology, Botany, Entomology, and Zoology departments. The Francis Huntington Snow Entomological Collections are in room 317. These collec-

tions consist of more than 500,000 specimens, including a great many species, over a thousand of which are represented by types. The Coleoptera collection is especially complete, containing 10,000 specimens. A display of insects is also shown in room 302.

The exhibit of the Botany Department consists of mounted ferns and grasses, which may be seen in the hall on the fourth floor.

The collections of the Zoology Department are in rooms 201 and 220. The lower hall contains a series of lighted aquaria with specimens of Kansas fish and turtles.

MARVIN HALL—ENGINEERING

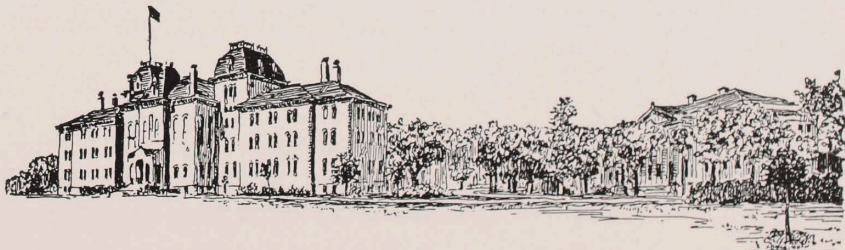
The various engineering laboratories will be open to visitors. Special attention is directed to the exhibition of student work of the Department of Architecture on the third floor. In the basement at the east end are the concrete road and applied mechanic testing laboratories and in the west end the water laboratory of the State Board of Health. Several dioramas showing improper and proper water well construction are on display on the basement floor.

The University's broadcasting station, KFKU, is of much interest to visitors and is in room 202 of the Engineering Laboratory Building behind Marvin Hall. In this same building are the electrical, mechanical and aeronautical laboratories. The wind tunnel is under the stadium.

ASTRONOMICAL OBSERVATORY

The William Pitt 27-inch Reflecting Telescope will be open for inspection, and also a number of astronomical photographs recently secured with it.

A complete set of photographs showing various stages of the annular eclipse of the sun on April 7, 1940, taken with the 6-inch refractor in Conroe, Texas, will also be on display.



The Seventy-Fifth Anniversary

The principal celebration of the 75th anniversary of the University of Kansas will be unfolded a year from now at the 1941 Commencement exercises.



PROF. U. G. MITCHELL

"You shall have a college which shall be a school of learning and at the same time perpetuate the memory of those martyrs of liberty" Amos A. Lawrence, 1856.

The operating committee has decided to group all the diamond anniversary events into a four-day period and not scatter them throughout several months of time. This means that the crowds which will visit the campus next June for the Sixty-ninth Commencement will be able to join in the commemoration of the three-quarters of a century which has elapsed since the opening of the Univer-

sity in 1866 and the completion of its 75 years of service to the state of Kansas.

"A few days later Quantrill's raid on Lawrence occurred, and, of course all thought of the school project was abandoned."
—Newspaper clipping 1863.

The operating committee which now is pushing forward the anniversary plans is headed by T. H. Marshall, professor of chemical engineering. The chairmen of the six sub-committees who are working with Marshall include Dean D. M. Swarthout, Leonard Axe, Bert A. Nash, Fred Montgomery, Fred Ellsworth, members of the University staff, and Ray T. Wright, alumnus and Lawrence business man.

And when the matter of the location of a state university arose, Lawrence made it known that it would rather have the university than the state capital.

This committee is working under the supervision of the general seventy-fifth anniversary committee, appointed in 1938 by

former Chancellor E. H. Lindley, and headed by U. G. Mitchell, professor of mathematics. The general committee laid a broad ground work, fixed tentative dates for the celebration, and planned several events which would lead logically to the finale next spring. Then it stepped aside. One month ago the operating committee moved into action.

The Unitarian, Congregational, Presbyterian and Episcopal churches had tried to start a school here, but, after difficulties, one and then the other abandoned the attempt.

The spring of 1941 was decided upon for the climax of the celebration because it will mark the completion of seventy-five years of service by the University of Kansas.

Small groups of students were coming up the hill, some of them riding on horseback. The sound of hammer and saw could be heard, for North College was not quite completed that September morning.

Seventy-four years ago on July 19, the Board of Regents elected the first faculty—E. J. Rice, acting president and professor of belles lettres and mental and moral science, D. H. Robinson, professor of languages, and F. H. Snow, professor of mathematics and natural science.

One man to teach all philosophy. One man to teach all languages. One man to teach all mathematics and science. What Kansas must owe to these three!

Seventy-four years ago on September 12, the University opened the doors of old North College to "twenty-six young ladies and twenty-nine young gentlemen," who were admitted to the preparatory department for the first term.

A plain square building without beauty of architecture and in its rooms no library or apparatus of any kind . . . across the river the shining steel rails of the Union Pacific building westward.

Because some events important in the history of the University occurred prior to 1866, each of them a milestone and all of them worthy



PROF. T. H. MARSHALL



NORTH
COLLEGE

FIRST UNIVERSITY
BUILDING

ERECTED IN 1866
RAZED IN 1918

of commemoration, the general committee already has presented several preliminary programs.

Perhaps the most important preliminary program was the dinner and radio broadcast Nov. 2, 1938, commemorating the seventy-fifth anniversary of the proclamation by Governor Thomas Carney which located the University at Lawrence. At that dinner William Allen White gave the address which was broadcast nationally, and former Governor Huxman was present.

Mr. White spoke of the marks of an educated man, while Chancellor Lindley in introducing him recounted some of the achievements of the University in the three-quarters of a century.

Then on April 18 of this year came another phase of the celebration—the banquet honoring the 50th anniversary of the founding of Phi Beta Kappa and Sigma Xi at K.U. Dean E. B. Stouffer of the Graduate School was the speaker and 80-page pamphlets were printed recounting the complete history and membership of these two honorary organizations.

Numerous side-lights have come into the 75th anniversary picture in recent months. The committee is considering the possibility of capitalizing on the following:

1. Reopening of Dyche Museum, which has been closed for repairs since 1932. The reconstructed building will house one of the best natural history museums in collegiate ranks.

2. Publication of Prof. Robert Tafts' picture-history of the University.

3. Formal presentation of three new men's dormitories to K. U., especially Alumni Place which was purchased through gifts by alumni.

Only one history of the University has been published, that by Miles W. Sterling, veteran professor of Greek, in 1891. Mr. Sterling is now retired and lives near the campus.

The principles which have been laid down by the general committee and upon which the 75th anniversary is based, include the following:

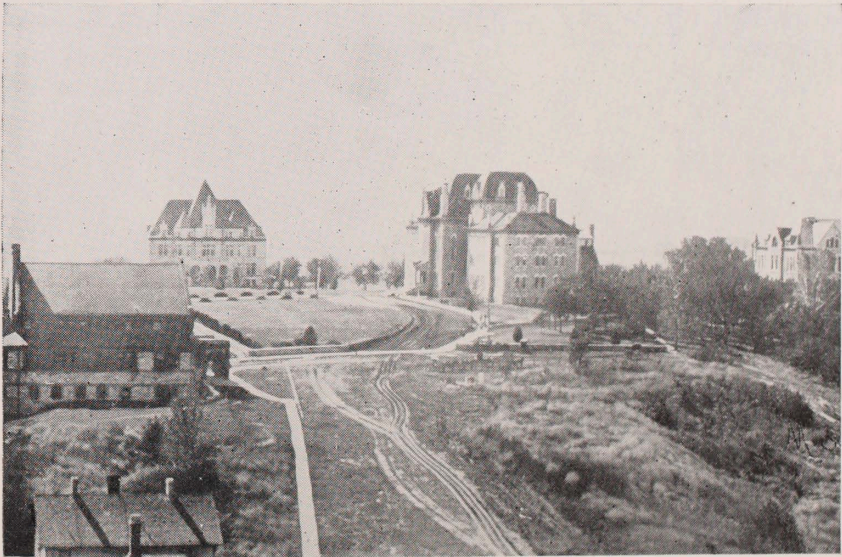
1. To honor those persons within and without the University who have made major contributions to its up-building.

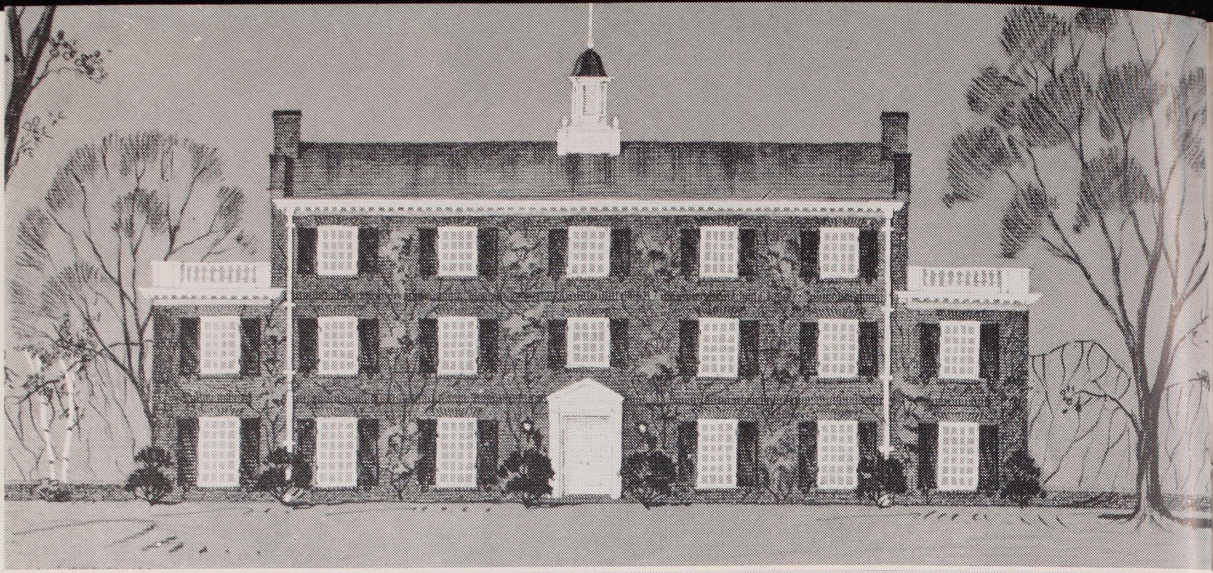
2. To give impetus to the cause of education.

3. To promote fellowship and unity among the alumni of the University and to bring a large number of alumni to the campus at one time.

5. To show alumni and citizens of the state what the University is as it exists today.

THE FIRST BUILDINGS ON THE PRESENT CAMPUS, READING FROM LEFT TO RIGHT—
SPOONER-THAYER ART MUSEUM, ORIGINALLY THE LIBRARY; BLAKE HALL;
FRASER HALL; AND OLD SNOW HALL.





Men's Dormitories at K. U.

For 74 years the University of Kansas has had no dormitories for men students. But the dawn of the 75th anniversary year will find three men's dorms on the campus—all owned and equipped by the University and 118 men living in them.

One of the dorms came as a result of a lot of hard work and a purchase, another directly as a gift, and the third directly as a gift. All three arrived within a year's time, without cost to the state, and somewhat like the A-B-C's.

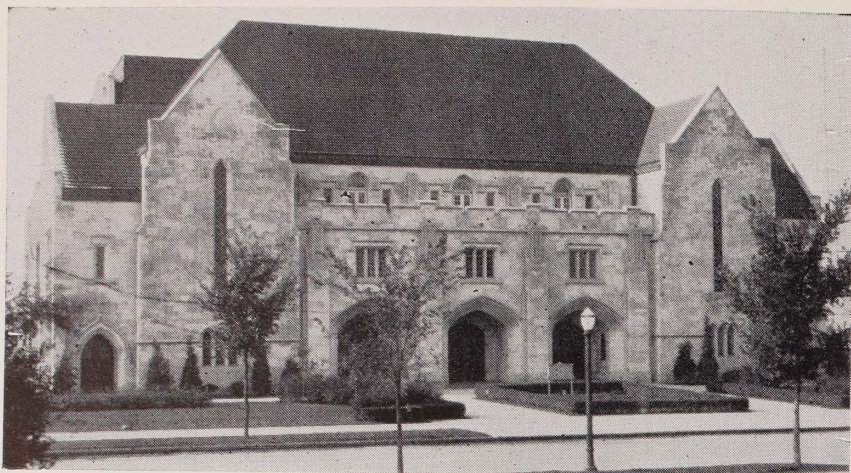
And so for brevity, let's call them A, B, and C.

A stands for Alumni Place. This historic property stands with its house and three acres of ground at the east edge of the campus on Fourteenth street, directly south of Spooner-Thayer museum. The Endowment Association purchased it last December from the Acacia fraternity. The house is being remodeled and redecorated and in September will accommodate 40 men students. The project was conceived a year ago by the Endowment Association as a seventy-fifth anniversary gift of alumni to their University, and a campaign for funds was immediately launched.

B stands for the John Battenfeld hall, now under construction. This 3-story brick house of Georgian architectural style, is being built on the south part of Alumni Place by Mr. and Mrs. J. R. Battenfeld of Kansas City, Mo. When it is completed by September and is filled with 52 men students it will stand as a memorial by the Battenfelds to the memory of their son, John, who was killed in a motor car crash near Lawrence last December. The son was a junior in the University at the time of his death. The Battenfelds also will furnish the dorm.

C stands for the former Chancellor's residence. This 3-story red brick house directly east of Spooner-Thayer museum was for more than forty years the home of K.U. chancellors. However, when the late Mrs. Elizabeth Watkins left by will her beautiful hill-top home to the University, it was redecorated, connected with K.U. utility lines, and occupied by Mr. and Mrs. Malott. This left the old home unoccupied. During this school year it

ON OPPOSITE PAGE, READING FROM TOP TO BOTTOM, ARE BATTENFELD HALL, THE FORMER CHANCELLOR'S RESIDENCE, AND ALUMNI PLACE.



HOCH AUDITORIUM—WHERE BACCALAUREATE AND COMMENCEMENT EXERCISES
WILL BE HELD IN CASE OF INCLEMENT WEATHER.

has been rented by a semi-organized group of men students, but in September it will be managed by the University as a dormitory. It accommodates 26.

The three houses—all within the distance of a hop-step-and-jump—will be managed by the University, with responsibility delegated to student leaders. Occupancy will be granted on the basis of house scholarships, each one estimated in value at \$100.

The holder of a scholarship will pay about \$18 per month for both board and room and will work about two hours a day around the house on assigned jobs. He may cook, wash dishes, make beds. Or he may sweep, dust, or rake the lawn. He will help to keep the place clean and will reduce expenses by sharing work as well as costs.

The scholarships, applications for which were sent throughout the state, will be granted to men students on the basis of character, need, intelligence, and studious habits. Their purpose is to provide a way for self-supporting men to attend the University, who, because of financial reasons, could not do so otherwise.

So now the A-B-C's are ready to take their place beside the three dormitories for women students—Corbin, Miller, and Watkins halls.

GENERAL INFORMATION

All students being graduated are referred to the Senior Reminder for instructions.

The faculties of the University will assemble in the East Corridor of Frank Strong Hall at 6:45 p.m., both Sunday evening and Monday evening. The University Marshal is Prof. J. J. Wheeler.

In case of inclement weather on Sunday evening or Monday evening, exercises will be held in Hoch Auditorium which will be reserved for ticket holders until 7:25 p.m.

TICKETS FOR COMMENCEMENT EXERCISES

Reservation tickets that will admit to special sections of the Stadium, or the Auditorium where the exercises will be held in case of rain, should be obtained by those entitled to them. Tickets will not be necessary to gain general admission to the Stadium.

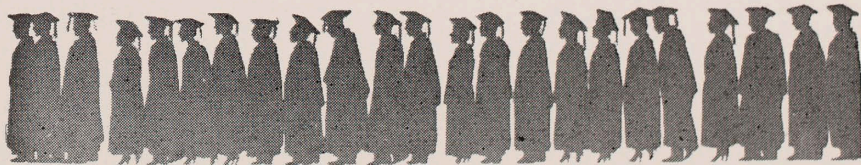
GRADUATING STUDENTS. Each graduating student is entitled to two tickets to the Commencement Exercises. These will be given out Friday, June 7, and Saturday, June 8, in Room 202, Robinson Gymnasium.

Alumni receive their tickets when they register at the Memorial Union Building.

TICKETS FOR ALUMNI-SENIOR LUNCHEON

GRADUATING STUDENTS. Each graduating student is entitled to one ticket to the University Luncheon. These tickets are not transferable, and may be obtained upon application at the ticket desk in Memorial Union, Saturday, June 8.

ALUMNI. Alumni are entitled to one ticket each, upon application to Prof. E. B. Dade, after having registered at Alumni Headquarters, at the Memorial Union. Arrangements for these tickets must be made before 10 a.m., Monday, June 10.



Program Revision

W. L. White of Emporia, foreign correspondent, who has just returned from the European war zone, will speak in Hoch Auditorium at 2:45 o'clock Sunday afternoon, June 9. The Commemorative Service will be advanced fifteen minutes to 2 o'clock. The premiere showing of the campus movie will follow immediately Mr. White's speech.

Sixty-eighth Annual
COMMENCEMENT

June 7 to 10, 1940



Program of Events

UNIVERSITY OF KANSAS
LAWRENCE

Program of Events

FRIDAY, JUNE 7

8:00 p.m. Commencement Recital, School of Fine Arts, Hoch Auditorium.

SATURDAY, JUNE 8

- 10:00 a.m. Alumni Registration Opens, Memorial Union.
- 1:00 p.m. Golf for Visiting Alumni, the Lawrence Country Club.
- 3:00 p.m. Baseball, Class of '40 vs. Alumni-Faculty, Intramural Field.
- 3:30 p.m. Panel-Forum, "European Situation," Fraser Theatre.
- 4:00 p.m. Engineers' Annual Meeting, Marvin Hall.
- 5:30 p.m. Torch Chapter Mortar Board Reunion.
- 6:00 p.m. Sachem Powwow.
- 7:30 p.m. Open Air Band Concert on Campus.
- 8:30 p.m. University Reception, Memorial Union.
- 9:30 p.m. Alumni-Senior Reunion Dance, Memorial Union.

SUNDAY, JUNE 9

- 11:00 a.m. Commencement Exercises at all Lawrence Churches.
- 12:30 p.m. Reunion Dinner, Class of 1890, Evans Hearth.
- 2:00 p.m. Open House at all University Buildings.
- 2:15 p.m. Commemorative Service, Hoch Auditorium.
- 3:30 p.m. Premiere Showing of K.U. Movies, Hoch Auditorium.
- 4:00 p.m. Band Concert, Fowler Grove.
- 4:30 p.m. Class and Group Reunion Dinners. All Reunion Headquarters at Memorial Union.
- The Senior Alumni (Graduates of 1889 and previous)
- The Class of 1900.
- The Law Class of 1910.
- The Class of 1915.
- The Class of 1930.
- 7:00 p.m. Baccalaureate Services, Memorial Stadium. Sermon by Dr. John Charles Schroeder, Professor of Homiletics and Pastoral Theology, Yale University.

MONDAY, JUNE 10

- 7:15 a.m. Class of 1940 Breakfast, Memorial Union Building.
- 9:45 a.m. Annual Alumni Association Meeting, Fraser Hall. Address by William Allen White.
- 12:15 p.m. University Luncheon, Memorial Union.
- 3:30 p.m. Panel-Forum, "Industrial Expansion in Kansas," Fraser Theatre.
- 4:00 p.m. Phi Beta Kappa Annual meeting, basement Spooner-Thayer Museum.
- 7:00 p.m. Commencement Exercises, Memorial Stadium.

MASSACHUSETTS

1910





FRANK STRONG HALL

The University of Kansas
requests the honor of your presence
at their

Sixty-eighth Annual Commencement Exercises

Monday, June tenth

Nineteen hundred forty

seven p. m.

Lawrence, Kansas

General Program for 1940 Commencement

FRIDAY, JUNE 7

- 8:00 p. m. Commencement Recital, School of Fine Arts,
Hoch Auditorium.

SATURDAY, JUNE 8

- 9:00 a. m. Golf for Visiting Alumni, Lawrence Country Club.
10:00 a. m. Alumni Registration Opens, Memorial Union.
3:00 p. m. Baseball, Class of '40 vs. Alumni-Faculty.
3:30 p. m. Panel-Forum—"European Situation,"
Fraser Theatre.
4:00 p. m. Engineers' Annual Meeting, Marvin Hall
5:30 p. m. Torch Chapter Mortar Board Reunion.
6:00 p. m. Sachem Powwow.
7:30 p. m. Open Air Band Concert on Campus.
8:30 p. m. University Reception, Memorial Union.
9:30 p. m. Alumni-Senior Reunion Dance, Memorial Union.

SUNDAY, JUNE 9

- 11:00 a. m. Commencement Exercises at All Lawrence Churches.
2:00 p. m. Open House at All University Buildings.
2:15 p. m. Commemorative Service, Hoch Auditorium.
3:30 p. m. Premier Showing—K. U. Movies, Hoch Auditorium.
4:00 p. m. Band Concert, Fowler Grove.
4:30 p. m. Class and Group Reunion Dinners. All Reunion
Headquarters at Memorial Union.
7:00 p. m. Baccalaureate Services, Memorial Stadium. Sermon
by Dr. John Charles Schroeder, Professor of
Homiletics and Pastoral Theology, Yale University.

MONDAY, JUNE 10

- 7:15 a. m. Class of 1940 Breakfast, Memorial Union Building.
9:45 a. m. Annual Alumni Association Meeting, Fraser Hall.
Address by William Allen White.
12:15 p. m. University Luncheon, Memorial Union.
3:30 p. m. Panel-Forum—"Industrial Expansion in Kansas,"
Fraser Theatre.
4:00 p. m. Phi Beta Kappa Annual Meeting.
7:00 p. m. Commencement Exercises, Memorial Stadium.

Class Officers and Committees

Class of 1940

OFFICERS AND COMMITTEES

Henry SchwallerPresident
Betty Jane BoddingtonVice-President
Eldreth CadwaladerTreasurer
Mary GarrisonSecretary

Invitation Committee

John Oakson—Chairman
Buster Davidson
Margaret Stookey
Eva Ruth Meinke

Publicity Committee

Harry Hill—Chairman
Walt Meininger
Marilyn McBride

Cap & Gown Committee

Andy Hibbard—Chairman
Dwight Kurth
Jim Brockett

Class Memorial Committee

Bob McKay—Chairman
J. D. Ramsey
Jim Harris
Patricia Eisenhower

Reception & Dance Committee

Dick Mize—Chairman
Bob Moore
Buelah Grunwald
Jean Crawford

Senior Breakfast Committee

Bill Waugh—Chairman
Juliette Trembly
Peg McCarty
Dan Hopkins

Class Prophecy Committee

Jim Robertson—Chairman
Reginald Buxton

Class History Committee

Dick McCann—Chairman
Stewart Jones

Alumni Membership

Velma Wilson—Chairman
Irving Kuraner
Harold Wilson

Senior Employment Committee

Mac Wynne—Chairman
Bob Galloway

College of Liberal Arts and Sciences

CANDIDATES FOR THE DEGREE OF BACHELOR OF ARTS

- Donald Abbuehl
Harry James Akers
John Harry Allderdice
*Dorothy Nelson Allen
*Frances Allen
Howard S. Alley
E. Maxine Almon
*Victor Earl Amend
Crystelle Anderson
Eugene Glen Anderson
Leota Jean Anderson
William Follett Anderson
Alfred A. Arky
William D. Arnold
*D. Kendall Austin
Howard V. Bair
*Esther Baker
Willa Henrietta Baker
Lena Rose Baldwin
Billie Ball
R. Clifford Banks
Marianna Bantleon
Elizabeth Decima Barclay
Rosamond Barland
Audrey Frances Bateman
*Evert Cleon Beaty
*John L. Beckner
Ruth Margaret Beckwith
James Adrian Bell
*Mary Louise Bell
Vernon A. Berkey
*Virginia Winifred Beverly
Cathleen Beyer
Phyllis Evelyn Birrer
Clyde Dale Blake, Jr.
Jane Dudley Blaney
Elizabeth Jane Boddington
Alice Christine Bodman
*Sarah Bodwell
Robert E. Bolinger
*Betty Patricia Bond
*Edward W. Borger, Jr.
- *Althea Louise Bowen
Betty Ladd Bowman
Virginia L. Bowser
Richard H. Boyce
*Arthur Klein Boyd
Wilfred Boswald Bozeman, Jr.
*Betty Joan Bradley
Robert Austin Bradley
*Delmar Oscar Branson
*Richard Eugene Brazee
Blanche Anna Brewer
Gordon Dexter Brigham
William Daniel Bright
Wallace James Brockett
Robert Miles Brooker
Robert Wright Brooks
*Venice Joyce Brosamer
Donald Siemer Brose
Betty C. Brown
Lela Madeline Brown
Margaret Elizabeth Brown
Ruth Olive Brown
*Silas Christian Brown
Anne Wandelohr Browning
Martha Lynde Browning
Betty Jane Brune
*Eugene Earle Buchanan
Dennis Darwin Buck
*Ruth Amelia Buehler
*Helen Naomi Buhler
*Lloyd L. Burgert
Kathleen Burner
Charles Roderick Burton
Curtis Andrew Burton
*Robert Jackson Busby
Louise Edna Bush
Freda Elizabeth Butterfield
Ivan Warren Cain
*Louise Elizabeth Calhoun
Kendall Carl Campbell
Charles Thomas Carr
*Edward Robert Carr

* Degrees granted since June 1939

CANDIDATES FOR THE DEGREE OF BACHELOR OF ARTS
(Continued)

Mack A. Carter	Hugh Leo Dwyer
Eleanor Cavert	*Dorothy Jean Dyer
*John Sansom Chalfant	Aubrey V. Earhart
George Carper Chaney	Donald Price Ebling
Mary Anna Chapman	Barbara Grace Edmonds
Virginia Annette Christie	Esta Marie Eisele
John Monahan Claflin	Melchior Enna
Nell M. Clark	Raymond Kirk Faris
Virginia V. Clay	Gene Richard Feaster
Ruth Elizabeth Clickner	Gerald L. Fiedler
Princzetta Elizabeth Clinch	Mary Jeanne Fitz-Gerald
Lloyd Herbert Coale	*William Robert Fitzgerald
William Irving Coldwell, Jr.	*Joseph Simeon Flipper
Elijah C. Cole	Helen Ruth Focht
Florence Marie Columbia	*Charles H. Fore
*Mary Joe Connell	*Katheryne Simona Foster
William Alexander Conroy	*William L. Fowler
Sarah Ruth Cook	*Zenith Mae Fowler
John Corbett, Jr.	Marjorie Mae Fox
Dale Herbert Corley	Alma Lillian Franklin
Nella Lee Corwin	Francis Dunn Franklin
Mary Margaret Cosgrove	Kermit Franks
*Elizabeth Jane Coulter	Alexander Fraser
*Robert Barton Cowan	*Marjorie Loretta Frazier
Frieda Eileen Cowles	*Carl Monroe Friesen
Ole Robert Cram, Jr.	Stanley Richard Friesen
Quentin Cramer	*Richard Gage
John Elwin Crary	Howard Elton Garrett
Jean Anne Crawford	Mary Eloise Garrison
Charles William Cross	Eloise Maxine Gasaway
*H. Carlisle Cummings	Oliver M. Gilliland
Alice Eleanor Curry	Robert Johnston Gilliland
Charles Ewing Curry	*Marion Lee Goehring
*V. Louise Cutter	Harry L. Goldberg
*Steven Vincente David	Harriet Louise Goodwin
Gwendolynn Josaphyne Davis	*Kenneth Graeber
Donald Dale DeFord	Wilma Jean Grant
Dorothy Marie Deichert	Max D. Graves
Joseph James Dickason	Maurine Gray
Loretta Mae Diggs	Irene Louise Grayson
Marianne Cory Dillon	Morton Green
*Paul Bennett Dobbs	Patricia Cordelia Green
*Lester Cates Doerr	Jerry Lee Griffith
Margaret Grace Dole	*Paul Hughston Grubb
*Wallace Dooley	Robert Stephen Guy
Henry Samuel Dreher, Jr.	Franklin C. Haas
Earling Edwin Dumler	*John Max Haight
*Fenlon Anson Durand	John Winston Hall

* Degrees granted since June 1939

CANDIDATES FOR THE DEGREE OF BACHELOR OF ARTS
(Continued)

Merle Moreen Hall	Doris Johnson
Loren Wilfern Hallam	James Irving Johnson
Willie Bea Harmon	Muriel Helen Johnson
*Charles Kenneth Harris	Harold Houston Jones, Jr.
*Claib Bosworth Harris	Stewart Jones
*Marguerite Harris	Harold George Kaufman, Jr.
William Fortna Hughes Harris	Joseph Foster Kell, Jr.
William Tucker Harris	Sam H. Kellam
*Robert Phillip Harrison	*Elizabeth Ellinor Kemp
Moselyn Sybil Harshberger	Donald Audley Kessler
James Samuel Hartzell	Elizabeth Kester
Robert Fulton Haugh	*Grace Marie King
Thelma Deay Haverty	Earl Ray Kinney
Helen Louise Hay	Mary Elizabeth Kirsch
Donald Bales Hayman	*Carl S. Knox
*Harriet Heath	Robert Miller Knox
Dorothy Helen Heathman	Lloyd Harlan Koelling
Dale Frederick Heckendorn	Walter Peter Krause
*Orval E. Hemphill	Marjorie Jean Kresie
Susan C. Henderson	*Harriet Idalette Kruger
Selma Lorraine Hensler	Irving Kuraner
Francis William Herndon	Dorothea Lacey
Ella Maxine Hess	*Joseph Howard Langworthy, Jr.
*Eugene W. Hiatt	Ruth Katherine Laughlin
*Edward Andrew Hibbard	Joy Ritch Lawson
Fern Darlene Hill	Margaret Louise Lawson
Richard Hastings Hill	*Madeleine Charlotte Leipscher
*Elon L. Hiller	Dorothy Deneise Lemoine
Leone Marie Hoffman	William Obert Lenhart
Richard Douglas Hogin	Leone Lentz
*Edna Mae Hollis	Chester Merral Lessenden, Jr.
Henry G. Horak	*Clay Warden Lewis, Jr.
Marion Bartlett Horn	*Euqia Ann Lewis
*Edward Evans Hoskins	Mary Natalia Lewis
*Jeannette Louise Houk	William Lewis
*Julia Myra Hudson	Moyne Wendell Lichlyter
*Marion Frances Hughes	Ruth Lucille Linck
Robert Edwards Hunt	*Mildred Messenheimer Lindley
Leslie Luther Hutchinson	*George Smith Lindsay
Jane Irwin	Harry Irvine Linn
Martha Jo Irwin	*Sidney S. Linscott, Jr.
John Ise, Jr.	*Donna Dorothy Linsdale
Etta Mae Jackson	Louis John Lipovsky
Bessie Mae Jamison	Warren Harold Littlejohn
Elizabeth Jacqueline Jarrott	Mary Alice Livingston
*Lillian E. Jessup	George Wilson Logue
*Mary Virginia Johns	*Evelyn Longerbeam
Charles Francis Johnson	Mary Lorraine Loriaux

* Degrees granted since June 1939

CANDIDATES FOR THE DEGREE OF BACHELOR OF ARTS
(Continued)

Lorraine Love	James Nelson, Jr.
Robert Emmet Lucy	Wilma Irene Nelson
Robert Standley Luke	Mary Lucile Neubauer
J. Neill Lysaught	Ernestine Jane Nichols
Richard Dyer MacCann	Mary Kenton Noel
Alys Magill	Genevieve Altha Nolan
Edwin Robert Maier	Esther Marguerite Norman
Robert Louis Marietta	Mollie Lisbeth North
Alexia Marks	Marie Helen Norton
*Martha Markwell	John J. Oakson
Betty Earlene Martin	Gordon Worth O'Brien
Johanna Corrine Martin	*Raymond Wilson O'Brien
Virginia Lee Mattingly	*James Paul O'Neill
Marilyn McBride	Kalman Anthony Oravetz
Margaret D. McCarty	D. William Overton
Marmaduke D. McComas, Jr.	Barbara Jane Owen
Edna Mae McConnell	Luelma Beryl Park
*Margaret M. McCoy	Edna May Parks
Mary Jane McCoy	Fred Edward Patrick, Jr.
Walter Lee McCroskey	C. Worth Payton
Robert William McIntire	*Frances E. Perkins
Phyllis Mae McPherson	Mary Jane Perkins
Betty Martin McVey	*Doris Gwennette Perney
Cordell David Meeks	Jean Perry
*Norman Richard Meeks	Martin John Peterson
Milton Victor Meier	John Albert Pettis
Walter W. C. Meininger	Betty Jane Pirtle
*Bertha Louise Mendenhall	Joyce Elizabeth Platt
Ernestine Deaton Menges	*Retha Pearl Poos
Jack A. Menish	*Kenneth Eugene Postlethwaite
Charles William Mills	Don Franklin Powell
Robert Lawrence Minor	John David Ramsey
Maurine Anita Mong	*Mary Jane Reid
Marvin Marion Moon	Glendon Earl Rewerts
*Charles Boyd Morgan	Inez Claire Rice
Carl Albert Moritz	Isabel Rice
Thomas James Morris, Jr.	Ralph E. Richardson
Joy Morrison	*Margaret Henrietta Ridley
Ada Louise Moseley	John Rolland Riisoe
*Russell Alden Mosser	Hartien S. Ritter
John William Murrew	*Agnes L. Robbins
*Margaret Elizabeth Nanninga	Monte Elizabeth Robbins
Lois Aline Naylor	*Flora Frances Roberts
Clarence Adkins Neal, Jr.	Cleojeane Smith Robertson
Patricia Esther Neal	James Richard Robertson
*Harriet Wetz Neale	Orealia Clara Robinson
Harry B. Neis	*Kenneth Paul Rockhill
*Harold Garwood Nelson	Mary Virginia Rodriguez

* Degrees granted since June 1939

CANDIDATES FOR THE DEGREE OF BACHELOR OF ARTS

(Continued)

- *Sara Elizabeth Rogers
 Virginia Rose
 John Q. Royce
 Helen Margaret Runyon
 Mable Savage
 Everett Niles Schrader
 Betty Jean Schultheis
 Barbara Evalyn Scott
 *Ira O. Scott, Jr.
 Rosmary Garnet Sebesta
 Faith Lorene Seeley
 Pauline Martha Sheldon
 *Pauline Eletha Sherman
 Uarda Sherry
 *Charles Robert Shields
 Alexander Shifrin
 David Lee Shirk
 Mary Virginia Shirley
 Samuel Burr Sifers
 Jay Simon
 Jeanette Singleton
 *Martha Singleton
 *Jay Leland Sitterley
 Mary Ellen Skonberg
 William Arthur Smiley, Jr.
 *Elizabeth Finley Smith
 *George Rockwell Smith
 Lucretia Alice Smith
 Marjorie Clare Smith
 Pauline Louise Snyder
 William Leslie Spearman
 Otto Paul Spehr
 Francis Milton Spencer
 *Frank Hall Spink, Jr.
 Stanford Splitter
 Marion Esther Springer
 Harriet E. Stephens
 *Martha Ellen Study
 *Mary Emily Sturhahn
 Dorothy Sullivan
 Mary Ellen Sullivan
 Robert W. Sullivan
 John M. Sullivant
 Ralph Edward Sweeney
 Jean Talbott
 Raymond Ronald Tate
 *George William Thomas
 *Dorothy May Thompson
 Mary Annetta Thompson
- Joseph Anton Tihen
 John Edwin Tilly
 *Gerhart R. Tonn
 Myrna Juliette Trembly
 William James Truxal
 Betty VanArsdale
 *Alice Rosetta VanBuskirk
 Robin Arnold VanMeter
 *Harriet Ruth VanZandt
 Charles William Vickers
 Dorothydean Viets
 *Herbert Webster Voorhies
 *Nannie Virginia Wade
 Nadyne Wakefield
 Stuart Boston Walker
 *Frances Cowan Warde
 *Anita Loreine Warden
 Ruth Margaret Warren
 Frank Howard Welch
 *Mary Gertrude Welch
 Roger Paul Weltmer
 *Laurence S. Werges
 *Earl M. West
 Lois Isabel West
 Edwin G. Westerhaus
 *Phyllis E. Wetherill
 *John P. White
 Donald Claire Widner
 Janet Frances Wilkinson
 Doris Jeanne Williams
 *Leone Lucille Willis
 Lyle Wilmot Willits
 Louise Wills
 Virginia Wills
 Frank W. Wilson, Jr.
 Harold Wesley Wilson, Jr.
 Velma Neville Wilson
 Melvin Clinton Wood
 Patricia Woodward
 Henry F. C. Wright
 Phyllis Lorraine Wyatt
 John MacDonald Wynne
 *Byron Augustus Yost
 Beth Young
 Leilyn Malhorn Young
 Emily Jane Yount
 Anthony Dvorak Zbranek
 Joy Francelene Zentmyer
 Helene Marie Zimmerman

*Degrees granted since June 1939

CANDIDATES FOR THE DEGREE OF BACHELOR OF SCIENCE
IN NURSING

Clara Lucille Baker

Emma Louise Kretzmann

Flora Elva Jung

Frances Preshia Stephenson

CANDIDATES FOR THE DEGREE OF BACHELOR OF SCIENCE
IN MEDICINE

V. Dale Alquist

William Rowland Miller

Harvey Lewis Bogan

*John V. Plett

Dean Kent Brooks

Edgar Leroy Robinson

Shirley E. Clark

*Paul Hatfield Royse

John Barney Dixon

*Alfred F. Schmidt

Rex Allen Gish

Robert R. Snook

Jack W. Graves

Wayland A. Stephenson

Lyman Lyle Harrison, Jr.

*William H. Tyler

*Theodore Reed Maxson

Floyd Weston Wells

*Glenn E. Millard

G. Raymond Wempe

Jay Kay Wisdom

*Degrees granted since June 1939

School of Engineering and Architecture

CANDIDATES FOR THE DEGREE OF BACHELOR OF SCIENCE IN ARCHITECTURE

*Charles Samuel Ash, Jr.	*Joy Scamman
Clare Frances Jones	Ira Sutton, Jr.
Paul Frederic Lewis	*Richard Wright Tippin
Jane Winifred Waring	

CANDIDATES FOR THE DEGREE OF BACHELOR OF SCIENCE IN ARCHITECTURAL ENGINEERING

*Jackson Alfred Dean	Richard Arthur Good
Glenn Arthur Foy	*Herbert G. Hermann, Jr.
Stanford Eugene Thomas	

CANDIDATES FOR THE DEGREE OF BACHELOR OF SCIENCE IN CHEMICAL ENGINEERING

*Byron B. Blackburn	Robert Raymond Moore
William Paul Clenny	Gordon Victor Ramseier
LeRoy Earl Colburn, Jr.	Vincent Carl Rethman
*John Craig Duer	Stafford Louis Ruhlen
Joseph Frederick Gieck	*Howard Reed Sailors
Linden Wells Greene, Jr.	*J. Lyle Samples
John Bernard Hagan, Jr.	William John Sorenson
John William Hall, Jr.	James Wilford Tharp
Melvin Richard Hefty	Hobert Carl Twiehaus
Harold W. Herbert	Wyatt Luther Walker
Clarence Edward Kelley	John K. Ward
Arthur W. Lorenz, Jr.	Henry T. White, Jr.
*John Weaver McCasin	Charles Raymond Wiles
Otis Ray McIntire	Jacob Emery Wyatt, Jr.
Robert Naylor Mitchell	Oliver Leon Yarham

CANDIDATES FOR THE DEGREE OF BACHELOR OF SCIENCE IN CIVIL ENGINEERING

William B. Davis	Dwight Fox Metzler
*Donald Lee Flanders	Alexander Clark Mitchell
*Herman Alvin Janzen	*Dee Alden Patterson
*Ray Goodman Lawrence	*Everett Raymond Watson
*Robert Wilson McLeod	Arthur Ernest Williamson

*Degrees granted since June 1939

CANDIDATES FOR THE DEGREE OF BACHELOR OF SCIENCE
IN ELECTRICAL ENGINEERING

*William Ransome Ayres	Paul Gleissner Morse
*Frederick Emerson Brooks, Jr.	H. Brewster Powers
David Parker Corkill	G. Schuyler Rice, Jr.
*George M. Gilmore	Richard Bergin Scott
Charles Herbert Gleason	Ray M. Smith
Myron Lee Harries	Louis Poehler Smithmeyer
Charles Hedges	Fred August Tegeler
Boyd Hill Henley	Martin K. Thomen, Jr.
Robert William Huller	Dale Wymo Whitaker
Hugh Wallace Magruder	Richard Neibel White

CANDIDATES FOR THE DEGREE OF BACHELOR OF SCIENCE
IN MECHANICAL ENGINEERING

*Alan N. Ayers	Lester Eugene Hey
Alvin Lee Barnett	Daniel Arthur Hirschler
Frank Carter Brock	William Mackey Johnstone
George Peter Bunn, Jr.	Rudy Kovach
Russell Chitwood, Jr.	Dwight Daeschner Kurth
*Gene Austin Cormany	*Don R. LaMont
Robert B. Doolittle	Thomas James Levell
Clement Anton Durna	James Brinsmade Lonsdale
Joseph Wray Fogwell	*Clarence H. McCabe
Loren Henry Frink	Joe McCoy
*Edward Alfred Fuchs	James Almarin Nottingham
Donald Lyle Funkhouser	*Charles Kenneth Razak
Jesse Elbert Gamber	George Webster Russell, Jr.
Walter Perry Glancy	Ralph Houghton Sills
Charles M. Grant, Jr.	Francis Neiland Thudium
Stewart Sill Gray	Everett W. Vaughn
Harold Finis Groebe	Raymond R. Wagner
Frank Joseph Hahn	Halbert E. Whitaker
Harold William Haight	Ernest Milton Wilkey
John Andrew Hamilton	David Edwin Young

CANDIDATE FOR THE DEGREE OF BACHELOR OF SCIENCE
IN INDUSTRIAL ENGINEERING

*Wade M. Green

CANDIDATES FOR THE DEGREE OF BACHELOR OF SCIENCE
IN MINING ENGINEERING

*Frank H. Alexander	John Edgar Corydon Elliot
Oren Cecil Baptist	Winford Leon Ferry
Conrad Harold Besinger	Vernon Aila May
Elmer Wilson Burdorff	John Mason Thompson, Jr.

CANDIDATES FOR THE DEGREE OF BACHELOR OF SCIENCE
IN PETROLEUM ENGINEERING

Leo Haskell Johnstone	Lewis Leonard Stallard
Elburt Seaton Miles	Charles Robert Tibbets
Harold Robert Sells	Hubert G. Walker

Robert B. Wilkins

* Degrees granted since June 1939

School of Business

CANDIDATES FOR THE DEGREE OF BACHELOR OF SCIENCE IN BUSINESS

- *Charles Shirk Arthur, Jr.
William C. Asher
Margaret Frances Austill
- *Nathan Axel
William T. Bailey
Ellis Bernal Barnhill
Vernon L. Bartram
Richard Robert Baskett
A. Clarence Bean
- *Frank Taylor Beckett, Jr.
- *Oscar Dwight Beverly
Donald C. Brain
Clifford Brass
- *Harry Hoffman Brown
Victor L. Bryant
- *Marie Nadine Burke
- *Samuel Alexander Caldwell
Wallis LeRoy Campbell
Richard F. Cary
T. Kenneth Cedarland
Marion Joyce Champlin
Donald Kurtz Clinger
Doris Evelyn Coleman
Jean Wilfred Coleman
Arthur Jesse Collins
John Arthur Cosgrove
Virgil Le Roy Courtright
Raymond Cormie Davidson
Guy Foster Davis, Jr.
Oris Omer Day
J. Keith Deay
Earle W. Deeble
Ambrose L. Dempsey
Joseph A. Diebold, Jr.
Charles William West Dowling
Charles William Dukes
- *Edward Wesley Dvorak
William Wyatt Eagle
- *Albert Port Early
- *Howard L. Edmonds
Norman S. Edmonds
Patricia Eisenhower
- *Eldon J. Elliot
- Thomas Edwin Evans
Olga Beth Farney
Roselyn Mary Felten
- *Edgar Seaman Finley
John Lacue Fisher
Wayne George Fixley
- *Loren Thurlow Florell
- *Robert Finley Frakes
Robert Francis Galloway
Henry J. Gempeler
Robert E. Glotzbach
John Burton Goins
William H. Graves
- *Virgil V. Green
Lloyd Vincent Gress
- *Robert Cooper Guthrie
- *Kenneth Milton Hamilton
Ralph Arthur Hammond
- *John George Hampton
James Dexter Harris
Raymond William Harris
Melvin K. Hass
William C. Hayes
- *Eugene Leslie Haynes
Robert A. Hedges
- *Norman See Hemphill
Leo A. Henrichs
Howard Dean Hielt
Thomas M. Higgins, Jr.
- *John C. Hocevar, Jr.
Bill B. Hoffine
- *William Hogan
Daniel Robert Hopkins
Harold Lee Hosford
Howard Everitt Hosford
Betty Hughes
- Winifred Carol Jameson
Arnold William Johnson
Harold Edwin Johnson
- *De Forest Jones
James Alexander Jones
Marguerite Fern Jones
- *Eugene L. Kadel

*Degrees granted since June 1939

CANDIDATES FOR THE DEGREE OF BACHELOR OF SCIENCE
IN BUSINESS

(Continued)

Jack Harry Kaiser	Pauline La Nette Richards
Raymond Leo Kelley	Leslie Ivan Rieger
*Cecil E. Kennedy	*John L. Robinson
Stuart S. Keown	Sidney Rothman
*William Francis Kiley	Lucy Ellen Rundell
*Ralph Roy Kingsland	*Glenn Edgar Russell
Merle William Kleweno	Walter Edward Russell
Norman Charles Kraemer	Joseph Greason Ryan
Jack Powell Ledyard	Betty Gene Sayles
Virgil James Leigh	*Lyle Keith Schaaf
George Maurice Lock	W. Keith Schuerman
Walter Morgan Loder	Henry Schwaller
William S. Lohman	Bertha Mildred Scott
Harrison Kenneth Long	Robert Hazen Shaeffer
*Rodney E. Loughmiller	N. Warren Shupe
Charles Groves Lucas	Henry Harold Sinning
*Alfred Campbell Mann	*Charles Thomas Skinner, Jr.
Clyde William Masheter	Clyde Lewis Smith
Robert Bernard Mater	Robert Nelson Smith
Ivan Joseph May	Wesley A. Songer
Robert Budge McKay	Robert Glen Sourk
*Patrick James McLean	Guy Vincent Spencer
*Francis Bernard McNamee	Chester Byron Spray
Everett Earl McPheeters	Wallace Franklin Springer, Jr.
Ronald Darnell Milam	Margaret Theo Strattan
Douglas Franklin Miller	Delson H. Thelen
James R. Mitchell	David A. Thiel
Walter Richard Mize	Ramona Crowley Thiel
William Henry Monroe	J. Mac Tinklepaugh
J. Morris Moon	Warren J. Turner
Francis Lloyd Moore	*William Hutchison Udell
Ernest Aldrich Morse	Bruce Herbert Voran
Verle Allen Myers	Roderick West Wakeland
John Pratt Naramore	Heinz R. Walther
*Charles Wayne Nees	Robert Tracy Ward
Kenneth J. Nelson	Jack Wassmer
Thomas George O'Donnell	Leonard Erbie Watson
*Stanley R. Olson	William Kansas Waugh, Jr.
Frank Seaver Owen	Edwin H. Wienecke
*Charles Ellsworth Paddock, Jr.	Ernest Edward Wiles
Harris Charles Pearson	Robert Eugene Wiley
Kermit Lee Roy Peterson	Harry James Winkler
Helen Vera Pierce	Darwin Harris Wolkow
Lester Fred Pojezny	Paul F. Wray
Robert Allen Powell	Betty Ann Yankee
Earle K. Radford, Jr.	Charles David Yeomans
Leo W. Rhodes	Bruce L. Zink

Anthony George Zollo

*Degrees granted since June 1939

School of Education

CANDIDATES FOR THE DEGREE OF BACHELOR OF SCIENCE IN EDUCATION

Virginia Henrietta Anderson	Flora Savilla Kauffman
Martha Jane Andrews	Placida Rose Koelzer
*Frank J. Anneberg, Jr.	Barbara E. Lawhon
*Eldora H. Ashcraft	Mickie Learnard
Marie Goff Austin	Mabel Theresia Lofgren
Margaret Ann Barber	Elsie Eunice Lowell
Margaret Barclay	*Avis Shotwell Mansur
Ethel Viola Beaman	*Donis Ellen McDermond
Eugene Edwin Billups	*Maurice Edron McGaugh
Margaret Edith Black	*Ruth Margaret Montzingo
Marie Elizabeth Bloomfield	Lora Beth Moore
Wilma Nadine Brooks	Ruth Mary Nelson
Adeline Marie Brown	*Pearl Willis Otto
Mary Kathleen Bunce	*Robert N. Palmer
Marion Estelle Clark	Helen Mae Peters
*Josephine Amanda Cook	Rebecca Opal Rages
John William Crutcher	Vergie P. Ray
*Orville Lloyd Dawson	*Max Cummings Replogle
Bonnell Beatrice Deisher	Daniel Jackson Rhule, Jr.
Grace Louise De Tar	Veta Rogers Riegel
Anna Wilhelmina Erickson	*Mattie Hansel Roan
*Esther Erickson	Jack Harding Sands
Gordon Wesley Fielder, Jr.	Lillian Sands
Helen Allen Finch	Lily Schmidt
*Mary Agnes Gaberdiel	Virginia Schooling
Alice Gengelbach	James H. Shuler
Katherine Louise Graves	Gerald Lamont Smith
James Wilbur Greene	*Mary Anna Fields Smith
Eleanor Louise Gregory	*Gertrude M. Taylor
William S. Hall	*Mildred M. Thomann
Jack Milton Happy	Howard George Trabant
Victory Agnes Hawkey	Lucille Beatrice Traynor
Julia Ruth Henry	*Joseph B. Trimeloni
*Lola Irene Higley	Gearldine Ulm
Margaret Anne Hyde	Alva Edward Wilkinson
Chester Eugene Hynes	Lois Helen Wisler
*Helen Mildred Jennings	Kathryn Marie Zenor

*Degrees granted since June 1939

School of Fine Arts

CANDIDATES FOR DEGREE OF BACHELOR OF MUSIC EDUCATION

*Rose Eleanor Black	Martha Louise Jackson
Ethelyne Marguerite Burns	Mary Frances Jackson
Anitanne Jacqueline Clements	Curtis M. Johnson
Jack Corwin Dalby	*Anna Ruth Kains
Lawrence Paul David	Gail Little
Julia Bain Eidson	Lorraine McIntrye
Priscilla Louise Greenlee	John Hummel Moore
*David Ralph Grindol	*Perry W. Pangrac
Leona Mae Hall	Howard Wendell Plank
Howard Bartels Harms	Anna Margaret Rightmire
Arthur G. Harris	Kenneth Lee Shook
Alice Corinne Harrison	Hilda Cecelia Slentz
Jean Lilith Henderson	Douglas J. Tarbet
Charles Cecil Hopkins, Jr.	Treva Emmeline Thompson
Gwen Marie Hunt	*Gilbert G. Towne

Marjorie Alice Ward

CANDIDATES FOR DEGREE OF BACHELOR OF MUSIC

Frederick Curtis Allen	Betty Lou Mechem
C. Vincent Bleecker	Eva Ruth Meinke
*Helen Elizabeth Campbell	*Alice Marie Meyn
Helen Dill Goode	Adrian Edward Pouliot
Arlouine Goodjohn	Mary Jane Schlaegel
*Shirley Miller Kell	Clarice Emily Sloan
W. Arnold Lynch	Paul Hugo Stoner

CANDIDATES FOR DEGREE OF BACHELOR OF FINE ARTS

Michael Franklin Andrews	*Lois Marion Lessert
Alta Florence Armstrong	*Jeanne Lorraine Mantele
Dora Juanita Brown	Charles Albert McDonald
Helen Josefin Cady	Jeanne McKnight
George Richard Eschbaugh	Albert Nicholas Muzenick
*Hazel Gladys Fanning	Marguerite Sue Myers
Helen C. Fincke	Doris Evelyn Nelson
Beulah Marjorie Grunwald	Mildred Faye Nelson
Richard James Harwood	Miriam Eloise Pohl
*Robert Frederick Kahn	Charles William Shipley
Gertrude Louise Kaufmann	Edgar Allen Stareck
Rene Kiskadden	Margaret Louise Stookey
Martha Jane Krehbiel	*Laura Elizabeth Thompson
George Edward Leather	Charles Raymond Toberen

*Walter Arthur Yost

*Degrees granted since June 1939

School of Law

CANDIDATES FOR DEGREE OF BACHELOR OF LAW

Alfred J. Anderson	Paul Andrew Lackie
William C. Baisinger, Jr.	Leon Ernest Lallier
*E. Keith Beard	Herbert Louis Lodge
*Edward M. Beougher	John Milton Lostutter
Leo Brenneisen	Oscar Austin Mall
Norman Loose Brown	Daniel Benjamin Marshall, Jr.
Eugene Earle Buchanan	Claudia Maxine Maxwell
*Charles Myers Cassel	Glenn E. McCann
*Lawrence Edmond Christenson	Cordell David Meeks
*William Winston Cochrane	Henry A. Onsgard, Jr.
Chester Alden Fleming	Edmund Lowell Page
Donald Charles Foss	*Hugh Phillips
Leighton Archer Fossey	*Marvin D. Price
Ima Mae Goehring	*James Vincent Riddel
Charles Edgar Henshall	J. Logan Shuss
Ulice Merton Hoover	John David Stewart
Floyd Marvin Kelly	*James Samuel Terrill
Charles Hazen Kimball	Frank Wilson Thompson
*Walter Kuehner, Jr.	Kenneth B. Wallace

Charles W. Ward

* Degrees granted since June 1939

School of Pharmacy

CANDIDATES FOR DEGREE OF BACHELOR OF SCIENCE IN PHARMACY

Betty Lou Adair

Dorothy Jane Adair

*Harold Arthur Bauman

Betty Jane Blackburn

Harry Cedric Caldwell, Jr.

Donald Lewis Cluster

*William Lowell Davis

Donald Vance Fortney

Bernard Hugo Walburn

Pershing Dean Frederick

*John Emmett Greene, Jr.

Virginia N. Kaspar

Charles Jeremiah Kleine

Guy Gurney Norris

Harold Noel Nyman

Jack Bowen Robertson

Alfred A. Swann

* Degrees granted since June 1939

School of Medicine

CANDIDATES FOR THE DEGREE OF DOCTOR OF MEDICINE

Arthur Adelman	Paul R. Leffler
Glenn Harris Baird	Herlan Orville Loyd
John R. Barnhill	Joseph Warren Manley
Fred Daniel Baty	Richard Gordon Meisburger
Monti Louis Belot	Morgan L. Mollohan
Louis John Bonanno	Victor Reuben Moorman
B. Earle Brickey	George Loren Norris
Vernon P. Brickey	Max Ensign Pfuetze
Thomas Sherman Brownell	Harold E. Poole
Norman A. Burkett	Marjorie McDonald Pyle
Howard Curtis Burkhead	Dan O. Ratzloff
Frank Lawrence Bynum	Forrest Eugene Richert
Arthur Samuel Cain, Jr.	Harry Marshall Roach
Clayton Wayne Clark	Harold A. Rosier
Garland Leroy Campbell	Edward A. Samuelson
James William Campbell	Ambrose Byron Shields
Gordon Clare Cook	Ronald A. Simpson
Alfred Gossett Dietrich	Clarence Hart Steele
Rutherford Scott Duemler	Marvin Omar Steffen
Harold L. Dyer	Hugh Stephens
DeMerle Emery Eckart	Richard Lee Sutherland
Eugene Klassen Enns	Frank Augustus Taber
Helen Leone Finley	Charles D. Terry
Bernard Berlin Gadwood	Dean Jack Tiller
Norman Arthur Galitzki	Donald Warren Todd
Glen Harley Garrett	Newman V. Treger
Karl Barnard Gonser	Lester Elden Ulrey
William Henry Guthrie	Ronald C. Vetter
Glen S. Harman	Larry E. VinZant
Charles Franklin Henderson	John David Way
Elmer A. Hof	William Eldon Wendel
John Allison Holmes	Claude Samuel Whitson
John Bennett Jarrott	Robert Benjamin Wilson
Ralph E. Jordan	Walton Clay Woods

Robert Paul Wright

* Degrees granted since June 1939

CANDIDATES FOR THE CERTIFICATE OF NURSING

Clara Lucille Baker	Esther Kovar
Charlotte Louise Bell	Margery Joyce McKim
Martha Esther Brill	Nadine Olive Nice
Ethel Dolores Cash	M. Nina Phipps
Geraldine Erma Cowley	Velma Maxine Reeves
Lillian Marie Crenshaw	M. Christine Ridgely
Marion Arlene Cross	Mary Alice Root Bain
Lucille Mae Dittman	Gladys Minnie Schulz
Doris Ethel Francis	Bertha Irene Spire
Anne Louise Friesen	Frances Preshia Stephenson
Laura Jane Goodall	Alpha Mae Tainter
Dorothy Grier	Frances Burlene Thurman
Rose Virginia Hawkins	Mabel Ellen Toothaker
Gladys Hester	Elsie Uppendahl
Lora Nelle Jones	Dorothy Agnes Warner
Flora Elva Jung	Doris Marjory White
Agnes Maxine Justis	Dolores Ellene Williamson
Ruth May King	Ferne Katherine Wineinger
	Mary Jo Winter

* Degrees granted since June 1939

COLLEGE CROFTERS
KANSAS CITY

University Luncheon



UNIVERSITY OF KANSAS

Sixty-Eighth Annual Commencement

LUNCHEON PROGRAM

Toastmaster, PAUL ENDACOTT, e'23
Alumni President



Responses from representatives of

Class of 1940

Class of 1930

Class of 1915

Class of 1900

Class of 1890

SENIOR ALUMNI

Classes which have passed their golden anniversary

Awarding of Gold Medals to 50-year Class

Distinguished guests will be introduced.

Chancellor Deane W. Malott, '21.

SONGS by a chosen group from Men's Glee Club, including University songs and some of the more joyful numbers from their repertoire—"The Laughing Song," by Abt and "Sourwood Mountains," a Kentucky mountain folk tune.



NOTE—This program is necessarily informal. The order of events will be arranged to suit the convenience of the occasion. Classes at the tables are expected to furnish such songs and cheers as their taste, ingenuity and ability permit.

MENU

STUFFED PEACH SALAD

CRISP WAFER



BAKED HAM—RAISIN SAUCE

CREAMED NEW POTATOES AND NEW PEAS

SPANISH WHOLE KERNEL CORN



LOGANBERRY ICE



ASSORTED ROLLS

PRESERVES



RELISHES

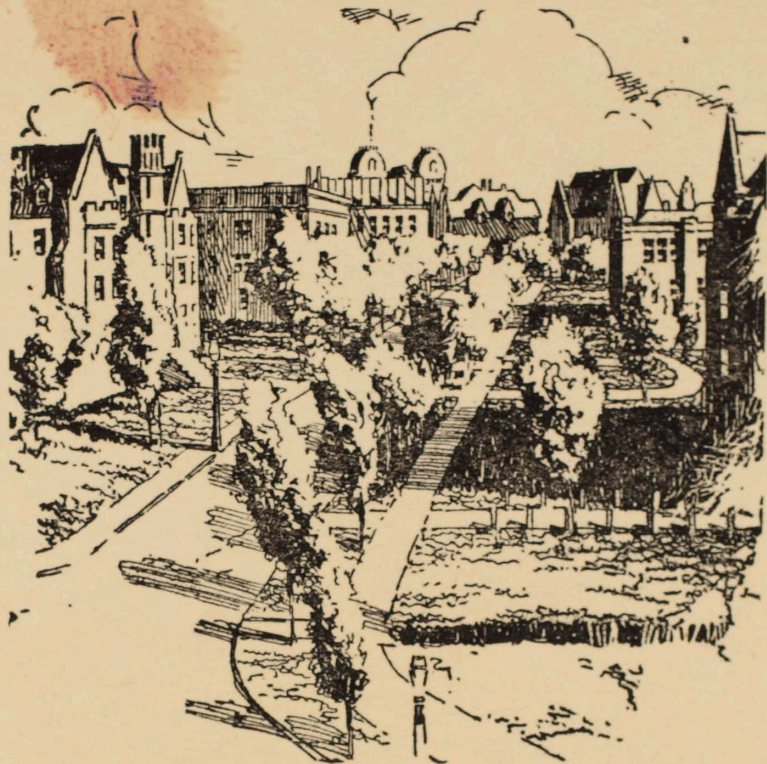


INDIVIDUAL CHERRY PIES

WHIPPED CREAM

COFFEE

1940



HILL TOP, Mount Oread

I ne'er come up this blessed hill,
Where youth is in the sun,
But that my pulses faster thrill,
My heartbeats swifter run.

I ne'er come up those blessed steps,
And view the valley o'er,
But that my heart a vigil keeps
More hopeful than before.

I ne'er come up these blessed heights,
Where youth is in the van,
But that I see aloft the lights,
And hear the pipes of Pan.

Leslie E. Wallace.

1940
62
#68



COMMENCEMENT

UNIVERSITY
OF KANSAS

JUNE 10 - 1940
SEVEN O'CLOCK

The Academic Procession

THE UNIVERSITY MARSHALS

THE CHANCELLOR AND THE GOVERNOR

THE BOARD OF REGENTS

DEANS OF THE SEVERAL SCHOOLS

FACULTIES OF THE SCHOOLS

THE CANDIDATES FOR DEGREES

THE GRADUATE SCHOOL

THE SCHOOL OF MEDICINE

THE SCHOOL OF LAW

THE SCHOOL OF BUSINESS

THE SCHOOL OF EDUCATION

THE SCHOOL OF PHARMACY

THE SCHOOL OF FINE ARTS

THE SCHOOL OF ENGINEERING AND ARCHITECTURE

THE COLLEGE OF LIBERAL ARTS AND SCIENCES



THE COLOR OF THE TASSEL ON THE ACADEMIC CAP DESIGNATES THE SCHOOL TO WHICH THE STUDENT BELONGS:

GRADUATE SCHOOL - BLACK	PHARMACY - - - - - OLIVE
MEDICINE - - - - - GREEN	FINE ARTS - - - - - BROWN
LAW - - - - - PURPLE	ENGINEERING AND
BUSINESS - - - - - DRAB	ARCHITECTURE - - ORANGE
EDUCATION - - LIGHT BLUE	COLLEGE - - - - - WHITE

The Order of Exercises

PROCESSIONAL:

"Grand Commencement March" - - - Arranged by *William Ward*
THE UNIVERSITY OF KANSAS BAND
RUSSELL L. WILEY, *Director*

INVOCATION - - - - - THE REV. HAROLD G. BARR
Minister to the First Christian Church

GREETINGS - - - - - THE HONORABLE PAYNE H. RATNER
Governor of the State of Kansas

GREETINGS - - - - - THE HONORABLE W. T. MARKHAM
Member of the Board of Regents

CONFERRING OF DEGREES - - - CHANCELLOR DEANE W. MALOTT

PRESENTATION OF DIPLOMAS - THE HONORABLE FRED M. HARRIS
Chairman of the Board of Regents

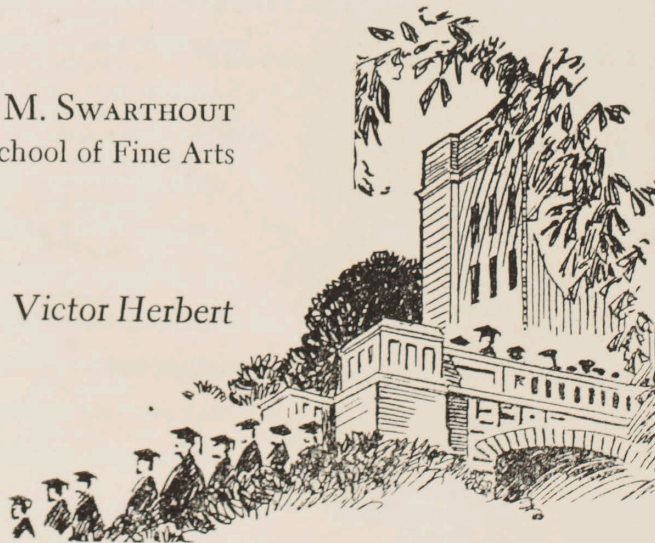
BENEDICTION - - - - - THE REV. ALFRED J. BEIL
Minister to the Trinity Lutheran Church

CRIMSON AND THE BLUE:

Led by DONALD M. SWARTHOUT
Dean of the School of Fine Arts

RECESSIONAL:

"Tramp, Tramp, Tramp" - - - *Victor Herbert*
THE UNIVERSITY BAND



* * * * *

. . . "A University training is the great ordinary means to a great but ordinary end; it aims at raising the intellectual tone of society, at cultivating the public mind, at purifying the national taste, at supplying true principles to popular enthusiasm and fixed aims to popular aspiration, at giving enlargement and sobriety to the ideas of the age, at facilitating the exercise of political power, and refining the intercourse of private life."

—NEWMAN

* * * * *

CANDIDATES FOR DEGREES

COLLEGE OF LIBERAL ARTS

Presented by DEAN PAUL B. LAWSON

Bachelor of Arts

- | | | | |
|---|--|---|--|
| DONALD ABBUEHL
Atchison | BETTY PATRICIA BOND
El Dorado | GEORGE CARPER CHANEY
Independence | BARBARA GRACE EDMONDS
Lawrence |
| HARRY JAMES AKERS
Coffeyville | *EDWARD W. BORGER, Jr.
El Dorado | VIRGINIA ANNETTE CHRISTIE
Paola | ESTA MARIE EISELE
Silver Lake |
| JOHN HARRY ALLDERDICE
Coldwater | ALTHEA LOUISE BOWEN
Independence | JOHN MONAHAN CLAFLIN
Kansas City | CATHERINE HOLMES EVANS
Portland, Mich. |
| *DOROTHY NELSON ALLEN
Marion | BETTY LADD BOWMAN
Kansas City, Mo. | NELL M. CLARK
Troy | KIRK FARIS
Kansas City, Mo. |
| *FRANCES ALLEN
Lawrence | VIRGINIA L. BOWSER
Merriam | VIRGINIA V. CLAY
Parsons | †CLAUDE CALVIN FARLEY
Kansas City |
| HOWARD S. ALLEY
Burbank, Calif. | *ARTHUR KLEIN BOYD
Hutchinson | RUTH ELIZABETH CLICKNER
Hutchinson | GENE RICHARD FEASTER
Winfield |
| E. MAXINE ALMON
Coffeyville | WILFRED B. BOZEMAN, Jr.
Lawrence | LLOYD HERBERT COALE
Kansas City | MARY JEANNE FITZ-GERALD
Tulsa, Okla. |
| *VICTOR EARL AMEND
Horton | BETTY JOAN BRADLEY
St. Louis, Mo. | ELIJAH C. COLE
Lawrence | *WILLIAM ROBERT FITZGERALD
Waterville |
| CRYSTELLE ANDERSON
Tescott | ROBERT AUSTIN BRADLEY
Atchison | FLORENCE MARIE COLUMBIA
Parsons | *JOSEPH SIMEON FLIPPER
Kansas City, Mo. |
| EUGENE GLEN ANDERSON
Kansas City, Mo. | †DELMAR OSCAR BRANSON
Osawatomie | *MARY JOE CONNELL
El Dorado | HELEN RUTH FOCHT
Newton |
| WILLIAM FOLLETT ANDERSON
Chanute | RICHARD EUGENE BRAZEE
Iola | WILLIAM ALEXANDER CONROY
Kansas City | *CHARLES H. FORE
St. Joseph, Mo. |
| WILLIAM D. ARNOLD
Garden City | BLANCHE ANNA BREWER
Leavenworth | DALE HERBERT CORLEY
Garden City | †KATHERYNE SIMONA FOSTER
Wadsworth |
| D. KENDALL AUSTIN
Topeka | GORDON DEXTER BRIGHAM
Lawrence | MARY MARGARET COSGROVE
Topeka | *WILLIAM L. FOWLER
Lawrence |
| *ESTHER BAKER
Derby | WILLIAM DANIEL BRIGHT
Paola | *ELIZABETH JANE COULTER
Wellington | *ZENITH MAE FOWLER
Norton |
| WILLA HENRIETTA BAKER
Leavenworth | ROBERT MILES BROOKER
Marion | ROBERT BARTON COWAN
Parker | MARJORIE MAE FOX
Lawrence |
| LENA ROSE BALDWIN
Lawrence | ROBERT WRIGHT BROOKS
Wichita | OLE ROBERT CRAM, Jr.
St. Francis | ALMA LILLIAN FRANKLIN
Hutchinson |
| *BILLIE BALL
Kansas City | *VENICE JOYCE BROSAMER
Topeka | JOHN ELWIN CRARY
McPherson | FRANCIS DUNN FRANKLIN
Kansas City, Mo. |
| R. CLIFFORD BANKS
Kansas City, Mo. | LELA MADELINE BROWN
Alton | JEAN ANNE CRAWFORD
Lawrence | KERMIT FRANKS
Winfield |
| MARIANNA BANTLEON
Edwardsville | RUTH OLIVE BROWN
Hill City | *H. CARLYSLE CUMMINGS
Lawrence | ALEXANDER FRASER
Kansas City, Mo. |
| ELIZABETH DECIMA BARCLAY
Grinnell | SILAS CHRISTIAN BROWN
Lawrence | ALICE ELEANOR CURRY
Kansas City | *MARJORIE LORETTA FRAZIER
Athol |
| *EVERT CLEON BEATY
Parsons | ANNE WANDELOHR BROWNING
Lee's Summit, Mo. | V. LOUISE CUTTER
Kansas City, Mo. | *CARL MONROE FRIESEN
Hillsboro |
| *JOHN L. BECKNER
Colby | MARTHA LYNDE BROWNING
Lee's Summit, Mo. | †STEVEN VINCENTE DAVID
Valley Stream, N.Y. | STANLEY RICHARD FRIESEN
Cheney |
| RUTH MARGARET BECKWITH
Hiawatha | BETTY JANE BRUNE
Independence | DONALD DALE DeFORD
Alton | *RICHARD GAGE
Minneapolis |
| JAMES ADRIAN BELL
Baguio, Philippine Islands | EUGENE EARLE BUCHANAN
Chanute | DOROTHY MARIE DEICHERT
Lawrence | HOWARD ELTON GARRETT
Shawnee |
| *MARY LOUISE BELL
Meridian, Idaho | *RUTH AMELIA BUEHLER
Claffin | JOSEPH JAMES DICKASON
Kansas City | MARY ELOISE GARRISON
Ottawa |
| VERNON A. BERKEY
Mulberry | *HELEN NAOMI BUHLER
Lawrence | LORETTA MAE DIGGS
Emporia | ELOISE MAXINE GASAWAY
Kansas City |
| *VIRGINIA WINIFRED BEVERLY
Burlingame | *LLOYD L. BURGERT
Lawrence | MARIANNE CORY DILLON
Kansas City, Mo. | OLIVER M. GILLILAND
Kansas City, Mo. |
| PHYLLIS EVELYN BIRNER
Grainfield | KATHLEEN BURNER
Sabetha | PAUL BENNETT DOBBS
Williamsburg | ROBERT JOHNSTON GILLILAND
Hutchinson |
| CLYDE DALE BLAKE, Jr.
Hays | CHARLES RODERICK BURTON
Galveston, Texas | LESTER CATES DOERR
McCracken | *MARION LEE GOEHRING
Lawrence |
| JANE DUDLEY BLANEY
Kansas City, Mo. | *ROBERT JACKSON BUSBY
Lawrence | *WALLACE DOOLEY
Kansas City | HARRY L. GOLDBERG
Kansas City, Mo. |
| ELIZABETH JANE BODDINGTON
Kansas City | LOUISE EDNA BUSH
Englewood | HENRY SAMUEL DREHER, Jr.
Luray | HARRIET LOUISE GOODWIN
Baxter Springs |
| ALICE CHRISTINE BODMAN
Kansas City, Mo. | *LOUISE ELIZABETH CALHOUN
Kansas City | EARLING EDWIN DUMLER
Dodge City | *KENNETH GRAEBER
Lawrence |
| *SARAH BODWELL
Kansas City, Mo. | CHARLES THOMAS CARR
Kansas City, Mo. | *FENLON ANSON DURAND
Junction City | WILMA JEAN GRANT
El Dorado |
| ROBERT E. BOLINGER
Merriam | *EDWARD ROBERT CARR
Kansas City | *DOROTHY JEAN DYER
Topeka | MAURINE GRAY
Chanute |
| | ELEANOR CAVERT
Independence | AUBREY V. EARHART
Hutchinson | IRENE LOUISE GRAYSON
Overland Park |
| | *JOHN SANSON CHALFANT
Bucklin | DONALD PRICE EBLING
Lindsborg | |

* Assigned to class of 1939

† Assigned to class of 1938

‡ Assigned to class of 1937

- *MORTON GREEN
Brooklyn, N.Y.
- PATRICIA CORDELIA GREEN
Lawrence
- JERRY LEE GRIFFITH
Iola
- *PAUL HUGHSTON GRUBB
Galena
- ROBERT STEPHEN GUY
Newton
- JOHN MAX HAIGHT
Paola
- JOHN WINSTON HALL
Tulsa, Okla.
- *CHARLES KENNETH HARRIS
Ottawa
- *CLAIB BOSWORTH HARRIS
Garnett
- *MARGUERITE HARRIS
Lawrence
- WILLIAM TUCKER HARRIS
Kansas City, Mo.
- *ROBERT PHILLIP HARRISON
Lawrence
- MOSELYN SYBIL HARSHBERGER
Dodge City
- °ROBERT FULTON HAUGH
Lawrence
- DONALD BALES HAYMAN
Formoso
- *HARRIET HEATH
Peabody
- DOROTHY HELEN HEATHMAN
Arkansas City
- DALE F. HECKENDORN
Newton
- ORVAL E. HEMPHILL
Baldwin
- SUSAN C. HENDERSON
Baxter Springs
- *SELMA LORRAINE HENSLER
Kansas City, Mo.
- *FRANCIS WILLIAM HERNDON
Kansas City
- *EUGENE W. HIATT
Kansas City
- EDWARD ANDREW HIBBARD
Toronto
- FERN DARLENE HILL
Topeka
- *ELON L. HILLER
Hutchinson
- LEONE MARIE HOFFMAN
Kansas City, Mo.
- RICHARD DOUGLAS HOGIN
Kansas City
- *EDNA MAE HOLLIS
Kansas City
- HENRY G. HORAK
Kansas City
- MARION BARTLETT HORN
Rocky River, Ohio
- *EDWARD EVANS HOSKINS
Tonganoxie
- *JEANNETTE LOUISE HOUK
Lawrence
- *JULIA MYRA HUDSON
Smith Center
- *MARION FRANCES HUGHES
Lawrence
- ROBERT EDWARDS HUNT
Lawrence
- JANE IRWIN
Kansas City, Mo.
- MARTHA JO IRWIN
Topeka
- ETTA MAE JACKSON
Kansas City
- BESSIE MAE JAMISON
Kansas City
- *LILLIAN E. JESSUP
Kansas City
- †MARY VIRGINIA JOHNS
Lawrence
- CHARLES FRANCIS JOHNSON
Coffeyville
- DORIS JOHNSON
Kansas City, Mo.
- MURIEL HELEN JOHNSON
Topeka
- HAROLD HOUSTON JONES, Jr.
Winfield
- STEWART JONES
Neodesha
- HAROLD G. KAUFMAN, Jr.
Kansas City, Mo.
- JOSEPH FOSTER KELL, Jr.
Lawrence
- SAM H. KELLAM
Cherryvale
- *ELIZABETH ELLINOR KEMP
Kansas City, Mo.
- DONALD AUDLEY KESSLER
Newton
- ELIZABETH KESTER
Lawrence
- GRACE MARIE KING
Lawrence
- EARL RAY KINNEY
Ida May, W.Va.
- MARY ELIZABETH KIRSCH
Paragould, Ark.
- *CARL S. KNOX
Lawrence
- LLOYD HARLAN KOELLING
Lawrence
- WALTER PETER KRAUSE
Kansas City, Mo.
- MARJORIE JEAN KRESIE
Meriden
- *HARRIET IDALETTE KRUGER
Kansas City
- IRVING KURANER
Leavenworth
- DOROTHEA LACEY
Kansas City, Mo.
- *JOSEPH H. LANGWORTHY, Jr.
Leavenworth
- RUTH KATHERINE LAUGHLIN
Bonner Springs
- JOY RITCH LAWSON
Independence
- MARGARET LOUISE LAWSON
Kansas City, Mo.
- MADELEINE C. LEIPSCHER
Kansas City, Mo.
- DOROTHY DENEISE LEMOINE
Kansas City, Mo.
- WILLIAM OBERT LENHART
Trenton, Mo.
- LEONE LENTZ
Salina
- *CLAY WARDEN LEWIS, Jr.
Topeka
- *EUGIA ANN LEWIS
Kansas City
- MARY NATALIA LEWIS
Salina
- WILLIAM LEWIS
Atwood
- MOYNE WENDELL LICHLYTER
El Dorado
- RUTH LUCILLE LINCK
Salina
- *MILDRED M. LINDLEY
Lawrence
- *GEORGE SMITH LINDSAY
Kansas City
- SIDNEY S. LINSKOTT, Jr.
Erie
- *DONNA DOROTHY LINSDALE
Lawrence
- LOUIS JOHN LIPOVSKY
Barberton, Ohio
- *WARREN H. LITTLEJOHN
Kansas City
- MARY ALICE LIVINGSTON
Kingman
- GEORGE WILSON LOGUE
Lawrence
- †EVELYN LONGERBEAM
Herington
- LORRAINE LOVE
Oberlin
- ROBERT EMMET LUCY
Wynne, Arkansas
- ROBERT STANDLEY LUKE
Galena
- J. NEILL LYSAUGHT
Kansas City
- RICHARD DYER MacCANN
Wichita
- EDWIN ROBERT MAIER
Arkansas City
- ROBERT LOUIS MARIETTA
Salina
- ALEXIA MARKS
Lawrence
- *MARTHA MARKWELL
Hays
- BETTY EARLENE MARTIN
Tulsa, Okla.
- JOHANNA CORRINE MARTIN
Paola
- VIRGINIA LEE MATTINGLY
Odessa, Mo.
- MARILYN McBRIDE
Wichita
- MARGARET D. McCARTY
Salina
- EDNA MAE McCONNELL
Downs
- MARGARET M. McCOY
Garden City
- MARY JANE McCOY
Emporia
- ROBERT WILLIAM McINTIRE
Olathe
- PHYLLIS MAE McPHERSON
Topeka
- BETTY MARTIN McVEY
Kansas City, Mo.
- †CORDELL DAVID MEEKS
Kansas City
- *NORMAN RICHARD MEEKS
Wichita
- *MILTON VICTOR MEIER
Herington
- WALTER W. C. MEININGER
Louisville, Ky.
- PERTHA LOUISE MENDENHALL
Leavenworth
- ERNESTINE DEATON MENGES
Leavenworth
- CHARLES WILLIAM MILLS
Lawrence
- ROBERT LAWRENCE MINOR
St. Joseph, Mo.
- MAURINE ANITA MONG
Neodesha
- MARVIN MARION MOON
Dodge City
- CHARLES BOYD MORGAN
Ottawa
- JOY MORRISON
Denton, Texas
- ADA LOUISE MOSELEY
Bartlesville, Okla.
- RUSSELL ALDEN MOSSER
Lawrence
- *MARGARET E. NANNINGA
Willis
- LOIS ALINE NAYLOR
Wellsville
- CLARENCE ADKINS NEAL, Jr.
Kansas City, Mo.
- PATRICIA ESTHER NEAL
Wichita
- HARRIETT WETZ NEALE
Kansas City, Mo.
- HARRY B. NEIS
Wellsville
- *HAROLD GARWOOD NELSON
Marion
- MARY LUCILE NEUBAUER
Kansas City
- ERNESTINE JANE NICHOLS
Osawatomie
- MARY KENTON NOEL
Lee's Summit, Mo.
- GENEVIEVE ALTHA NOLAN
Chanute
- MOLLIE LISBETH NORTH
Lawrence
- MARIE HELEN NORTON
Kansas City
- GORDON WORTH O'BRIEN
Russell
- *RAYMOND WILSON O'BRIEN
Osawatomie
- †JAMES PAUL O'NEILL
Lawrence
- KALMAN ANTHONY ORAVETZ
Newark, N.J.
- D. WILLIAM OVERTON
Lawrence
- EDNA MAY PARKS
Kansas City, Mo.
- FRED EDWARD PATRICK, Jr.
Mission
- C. WORTH PAYTON
Arkansas City
- FRANCES E. PERKINS
Lawrence
- *DORIS GWENNETTE PERNEY
Topeka
- JEAN PERRY
Lawrence
- MARTIN JOHN PETERSON
Newton, Mass
- BETTY JANE PIRTLE
Kansas City
- JOYCE ELIZABETH PLATT
Lake City
- *RETHA PEARL POOS
Beverly Station, Mo.
- *KENNETH E. POSTLETHWAITE
Mankato
- JOHN DAVID RAMSEY
Kansas City, Mo.
- MARY JANE REID
Iola
- GLENDON EARL REWERTS
Leoti
- INEZ CLAIRE RICE
Kansas City
- ISABEL RICE
Wathena
- RALPH E. RICHARDSON
Thayer
- *MARGARET H. RIDLEY
St. Louis, Mo.
- JOHN ROLLAND RIISOE
Kinsley
- *AGNES L. ROBBINS
Dodge City
- MONTE ELIZABETH ROBBINS
Lawrence
- FLORA FRANCES ROBERTS
Lawrence
- CLEOJEANE S. ROBERTSON
Moline
- *KENNETH PAUL ROCKHILL
Eureka
- MARY VIRGINIA RODRIGUEZ
Horton
- *SARA ELIZABETH ROGERS
Tulsa, Okla.
- VIRGINIA ROSE
Paola
- JOHN Q. ROYCE
Salina
- HELEN MARGARET RUNYON
Peabody

* Assigned to class of 1939

† Assigned to class of 1938

° Assigned to class of 1933

MABLE SAVAGE Florence	WILLIAM LESLIE SPEARMAN Lawrence	WILLIAM JAMES TRUXAL Great Bend	JANET FRANCES WILKINSON Kansas City, Mo.
EVERETT NILES SCHRADER Hutchinson	OTTO PAUL SPEHR Hoisington	BETTY VANARSDALE Wichita	DORIS JEANNE WILLIAMS Lawrence
BETTY JEAN SCHULTHEIS Kansas City, Mo.	FRANCIS MILTON SPENCER Topeka	*ALICE ROSETTA VANBUSKIRK Kincaid	*LEONE LUCILLE WILLIS Lawrence
BARBARA EVALYN SCOTT Syracuse	*FRANK HAIL SPINK, Jr. Kansas City, Mo.	HARRIET RUTH VANZANDT Hutchinson	LYLE WILMOT WILLITS Kansas City, Mo.
IRA O. SCOTT, Jr. Garden City	STANFORD SPLITTER Frederick	DOROTHYDEAN VIETS Lawrence	LOUISE WILLIS Tulsa, Okla.
FAITH LORENE SEELEY Russell	MARION ESTHER SPRINGER Lawrence	*HERBERT WEBSTER VOORHIES Kansas City	VIRGINIA WILLIS Tulsa, Okla.
PAULINE ELETHA SHERMAN Topeka	HARRIET E. STEPHENS Topeka	*NANNIE VIRGINIA WADE Wichita	HAROLD WESLEY WILSON, Jr. Horton
UARDA SHERRY Burlingame	*MARTHA ELLEN STUDY Springfield, Mo.	*FRANCES COWAN WARDE Lawrence	VELMA NEVILLE WILSON Meade
CHARLES ROBERT SHIELDS Kinsley	*MARY EMILY STURHAHN Topeka	*ANITA LOREINE WARDEN Parsons	PATRICIA WOODWARD Salina
*DAVID LEE SHIRK Lawrence	MARY ELLEN SULLIVAN Ulysses	RUTH MARGARET WARREN Topeka	HENRY F. C. WRIGHT Dodge City
MARY VIRGINIA SHIRLEY Chanute	ROBERT W. SULLIVAN Salina	FRANK HOWARD WELCH Independence, Mo.	PHYLLIS LORRAINE WYATT Plains
SAMUEL BURR SIPERS Kansas City, Mo.	JOHN M. SULLIVANT Eudora	*MARY GERTRUDE WELCH Lawrence	JOHN MacDONALD WYNNE Hays
JEANETTE SINGLETON Kansas City, Mo.	JEAN TALBOTT Kansas City, Mo.	ROGER PAUL WELTMER Beloit	*BYRON AUGUSTUS YOST Sabetha
†MARTHA SINGLETON Kansas City, Mo.	*GEORGE WILLIAM THOMAS Kansas City	†LAURENCE S. WERGES Lawrence	BETH YOUNG Kansas City, Mo.
*JAY LELAND SITTERLEY Great Bend	*DOROTHY MAY THOMPSON Lawrence	*EARL M. WEST Arkansas City	LEILYN MALHORN YOUNG Leavenworth
MARY ELLEN SKONBERG Kansas City, Mo.	MARY ANNETTA THOMPSON Concordia	LOIS ISABEL WEST Lawrence	EMILY JANE YOUNT Arkansas City
WILLIAM ARTHUR SMILEY, Jr. Junction City	JOSEPH ANTON TIHEN Harper	EDWIN G. WESTERHAUS Florence	ANTHONY DVORAK ZBRANEK Neosho, Mo.
*ELIZABETH FINLEY SMITH Kansas City, Mo.	JOHN EDWIN TILLY Kansas City	*PHYLLIS E. WETHERILL Kansas City, Mo.	JOY FRANCELLENE ZENTMYER Willis
*GEORGE ROCKWELL SMITH Pratt	*GERHART R. TONN Haven	*JOHN P. WHITE Parsons	HELENE MARIE ZIMMERMAN Dodge City
LUCRETIA ALICE SMITH Topeka	MYRNA JULIETTE TREMBLY Lawrence	DONALD CLAIRE WIDNER Baxter Springs	

387

Bachelor of Science in Nursing

CLARA LUCILLE BAKER Ozawkie	FLORA ELVA JUNG Lawrence	EMMA LOUISE KRETZMANN Sylvan Grove	FRANCES PRESHIA STEPHENSON Norton
--------------------------------	-----------------------------	---------------------------------------	--------------------------------------

4

Bachelor of Science in Medicine

HARVEY LEWIS BOGAN Gas	JACK W. GRAVES Topeka	WILLIAM ROWLAND MILLER Lyons	*ALFRED F. SCHMIDT Canton
DEAN KENT BROOKS Lawrence	LYMAN LYLE HARRISON, Jr. Marysville	*JOHN V. PLETT Buhler	ROBERT R. SNOOK Topeka
SHIRLEY E. CLARK Great Bend	*THEODORE REED MAXSON Iola	EDGAR LEROY ROBINSON Lawrence	WAYLAND A. STEPHENSON Lawrence
JOHN BARNEY DIXON Kansas City, Mo.	*GLENN E. MILLARD Topeka	*PAUL HATFIELD ROYSE Elk City, Okla.	*WILLIAM H. TYLER Kansas City
REX ALLEN GISH Lawrence			FLOYD WESTON WELLS Asherville

18-409

SCHOOL OF ENGINEERING AND ARCHITECTURE

Presented by DEAN IVAN C. CRAWFORD

Bachelor of Science in Architecture

CHARLES SAMUEL ASH, Jr. Topeka	†FOSTER CLARK PARRIOTT Denver, Colo.	IRA SUTTON, Jr. Lawrence	JANE WINIFRED WARING Kansas City
CLARE FRANCES JONES Leavenworth	JOY SCAMMAN Rock Port, Mo.	RICHARD WRIGHT TIPPIN Kansas City, Mo.	

7

Bachelor of Science in Architectural Engineering

*JACKSON ALFRED DEAN Pratt	GLENN ARTHUR FOY Hutchinson	RICHARD ARTHUR GOOD Iola	HERBERT G. HERRMANN, Jr. Kansas City, Mo.
* Assigned to class of 1939	‡ Assigned to class of 1937	† Assigned to class of 1938	STANFORD EUGENE THOMAS St. Joseph, Mo.

5

Bachelor of Science in Chemical Engineering

*BYRON B. BLACKBURN New Albany	MELVIN RICHARD HEFTY Valley Falls	VINCENT CARL RETHMAN Seneca	WYATT LUTHER WALKER Kansas City, Mo.
WILLIAM PAUL CLENNY Kansas City	HAROLD W. HERBERT Kansas City, Mo.	STAFFORD LOUIS RUHLEN Woodbine	JOHN K. WARD Kansas City
LEROY EARL COLBURN, Jr. Kansas City	CLARENCE EDWARD KELLEY Hamilton, Mo.	HOWARD REED SAILORS Dodge City	HENRY T. WHITE, Jr. Kansas City, Mo.
JOHN CRAIG DUER Lawrence	ARTHUR W. LORENZ, Jr. Topeka	*J. LYLE SAMPLES Conway Springs	CHARLES RAYMOND WILES Parsons
JOSEPH FREDERICK GIECK Kansas City	*JOHN WEAVER McCASLIN Kincaid	WILLIAM JOHN SORENSON Kansas City	JACOB EMERY WYATT, Jr. Kansas City, Mo.
JOHN BERNARD HAGAN, Jr. Kansas City, Mo.	ROBERT NAYLOR MITCHELL Lawrence	JAMES WILFORD THARP Independence	OLIVER LEON YARHAM Lawrence
JOHN WILLIAM HALL, Jr. Kansas City	ROBERT RAYMOND MOORE Topeka	HOBERT CARL TWIEHAUS Independence, Mo.	

27

Bachelor of Science in Civil Engineering

JOE M. CLARK Overland Park	*HERMAN ALVIN JANZEN Hillsboro	DWIGHT FOX METZLER Carbondale	*EVERETT RAYMOND WATSON Topeka
WILLIAM B. DAVIS Mankato	*RAY GOODMAN LAWRENCE Smith Center	*ALEXANDER CLARK MITCHELL Lawrence	ARTHUR ERNEST WILLIAMSON Troy
*DONALD LEE FLANDERS Ellsworth	*ROBERT WILSON McLEOD Smith Center	*DEE ALDEN PATTERSON Kansas City	

11

Bachelor of Science in Electrical Engineering

*WILLIAM RANSOME AYRES Kansas City, Mo.	CHARLES HERBERT GLEASON Wichita	*HUGH WALLACE MAGRUDER Lawrence	RAY M. SMITH Nevada, Mo.
FREDERICK E. BROOKS, Jr. Austin, Texas	MYRON LEE HARRIES Wakeeney	PAUL GLEISSNER MORSE Abilene	LOUIS POEHLER SMITHMEYER Topeka
DAVID PARKER CORKILL Nortonville	CHARLES HEDGES Hickman Mills, Mo.	H. BREWSTER POWERS Kansas City	*MARTIN K. THOMEN, Jr. Orange, Texas
*GEORGE M. GILMORE Overbrook	ROBERT WILLIAM HULLER Emporia	G. SCHUYLER RICE, Jr. Kansas City, Mo.	DALE WYMO WHITAKER Almena
		RICHARD BERGIN SCOTT Kansas City, Mo.	

17

Bachelor of Science in Industrial Engineering

†WADE M. GREEN
Lawrence

1

Bachelor of Science in Mechanical Engineering

*ALAN N. AYERS Lawrence	*JESSE ELBERT GAMBER Great Bend	LESTER EUGENE HEY Baldwin City	JOE McCOY McPherson
GEORGE PETER BUNN, Jr. Bartlesville, Okla.	WALTER PERRY GLANCY Parkerville	DANIEL ARTHUR HIRSCHLER Emporia	JAMES ALMARIN NOTTINGHAM Lawrence
GENE AUSTIN CORMANY Kansas City, Mo.	†CHARLES M. GRANT, Jr. Topeka	RUDY KOVACH Columbus	*CHARLES KENNETH RAZAK Collyer
ROBERT B. DOOLITTLE University City, Mo.	STEWART SILL GRAY Kansas City, Mo.	DWIGHT DAESCHNER KURTH Hutchinson	FRANCIS NEILAND THUDIUM Baldwin
CLEMENT ANTON DURNA New York City, N.Y.	FRANK JOSEPH HAHN Lawrence	†DON R. LaMONT Lawrence	RAYMOND R. WAGNER Ellinwood
JOSEPH WRAY FOGWELL Burlingame	HAROLD WILLIAM HAIGHT Ottawa	THOMAS JAMES LEVELL Kansas City	HALBERT E. WHITAKER Lawrence
LOREN HENRY FRINK Lawrence	JOHN ANDREW HAMILTON Kansas City	JAMES BRINSMADE LONSDALE Kansas City, Mo.	DAVID EDWIN YOUNG Kansas City, Mo.
EDWARD ALFRED FUCHS Kansas City, Mo.		CLARENCE H. McCABE Garnett	

30

Bachelor of Science in Mining Engineering

FRANK H. ALEXANDER Topeka	CONRAD HAROLD BESINGER Stanberry, Mo.	MAURICE B. HANSELL, Jr. Kansas City, Mo.	‡RAY TAYLOR Las Cruces, N.M.
OREN CECIL BAPTIST Uniontown	ELMER WILSON BURDORFF Lawrence	VERNON AILA MAY Longton	JOHN MASON THOMPSON, Jr. Independence

8

Bachelor of Science in Petroleum Engineering

ELBURT SEATON MILES Kansas City, Mo.	LEWIS LEONARD STALLARD Parsons	HUBERT G. WALKER Lancaster, Wisc.
HAROLD ROBERT SELLS Effingham	CHARLES ROBERT TIBBETS San Antonio, Texas	ROBERT B. WILKINS Liberal

* Assigned to class of 1939

† Assigned to class of 1938

‡ Assigned to class of 1937

‡ Assigned to class of 1905

6-112

SCHOOL OF FINE ARTS

Presented by DEAN DONALD M. SWARTHOUT

Bachelor of Music Education

*ROSE ELEANOR BLACK Lawrence	*DAVID RALPH GRINDOL Grantville	CURTIS M. JOHNSON Fort Collins, Colo.	HOWARD WENDELL PLANK Ottawa
ETHEL YNE M. BURNS Lawrence	LEONA MAE HALL Topeka	ANNA RUTH KAINS Clarksville, Mo.	ANNA MARGARET RIGHTMIRE Oklahoma City, Okla.
ANITANNE J. CLEMENTS Madison	HOWARD BARTELS HARMS Hillsboro	GAIL LITTLE Fort Scott	DOUGLAS J. TARBET Leavenworth
JACK CORWIN DALBY Topeka	ALICE CORINNE HARRISON St. Francis	LORRAINE McINTYRE Olathe	TREVA EMMELINE THOMPSON Colony
LAWRENCE PAUL DAVID Concordia	JEAN LILITH HENDERSON Topeka	JOHN HUMMEL MOORE Atchison	*GILBERT G. TOWNE Beverly
JULIA BAIN EIDSON Topeka	GWEN MARIE HUNT Lawrence	†PERRY W. PANGRAC Kiowa	*MARJORIE ALICE WARD Lawrence
PRISCILLA LOUISE GREENLEE Holton			

25

Bachelor of Music

FREDERICK CURTIS ALLEN Milwaukee, Wis.	Theory and Composition	*SHIRLEY MILLER KELL Lawrence	Piano	ADRIAN EDWARD POULIOT Damar	Piano
*HELEN ELIZABETH CAMPBELL Downs	Voice	BETTY LOU MECHEM Kansas City, Mo.	Voice	MARY JANE SCHLAEGEL Kansas City, Mo.	Voice
HELEN DILL GOODE Lawrence	Piano	EVA RUTH MEINKE Loring	Piano	CLARICE EMILY SLOAN Topeka	Voice
ARLOUINE GOODJOHN Leavenworth	Voice	*ALICE MARIE MEYN Lawrence	Voice	PAUL HUGO STONER Lawrence	Violin

12

Bachelor of Fine Arts

MICHAEL FRANKLIN ANDREWS Central City, Pa.	Public School Art	CHARLES ALBERT McDONALD Nickerson	Design
ALTA FLORENCE ARMSTRONG St. Louis, Mo.	Design	JEANNE McKNIGHT Lawrence	Painting
DORA JUANITA BROWN Lawrence	Design	ALBERT NICHOLAS MUZENICK Kansas City	Design
GEORGE RICHARD ESCHBAUGH Lawrence	Design	*MARGUERITE SUE MYERS Kansas City, Mo.	Design
*HAZEL GLADYS FANNING Melvern	Public School Art	DORIS EVELYN NELSON Salina	Public School Art
HELEN C. FINCKE Kansas City	Drawing and Painting	MILDRED FAYE NELSON Lawrence	Public School Art
BEULAH MARJORIE GRUNWALD St. Joseph, Mo.	Public School Art	MIRIAM ELOISE POHL Boone, Iowa	Design
RICHARD JAMES HARWOOD Wichita	Design	CHARLES WILLIAM SHIPLEY Topeka	Design
*ROBERT FREDERICK KAHN Lawrence	Public School Art	EDGAR ALLEN STARECK Benton	Drawing and Painting
GERTRUDE LOUISE KAUFMANN Kansas City, Mo.	Public School Art	MARGARET LOUISE STOOKEY Topeka	Design
MARTHA JANE KREHBIEL Kansas City, Mo.	Public School Art	LAURA ELIZABETH THOMPSON Horton	Public School Art
GEORGE EDWARD LEATHER Atchison	Design	CHARLES RAYMOND TOBEREN New York City, N.Y.	Public School Art
LOIS MARION LESSERT Cheyenne Agency, S.D.	Public School Art	*WALTER ARTHUR YOST Cummings	Public School Art
*JEANNE LORRAINE MANTELE Halstead	Public School Art		

27-64

SCHOOL OF PHARMACY

Presented by DEAN L. D. HAVENHILL

Bachelor of Science in Pharmacy

BETTY LOU ADAIR Topeka	HARRY CEDRIC CALDWELL, Jr. Pratt	PERSHING DEAN FREDERICK Wilson	GUY GURNEY NORRIS Garden City
DOROTHY JANE ADAIR Topeka	DONALD LEWIS CLUSTER St. Joseph, Mo.	*JOHN EMMETT GREENE, Jr. Sabetha	JACK BOWEN ROBERTSON Oxford
*HAROLD ARTHUR BAUMAN Harper	WILLIAM LOWELL DAVIS Blue Rapids	VIRGINIA N. KASPAR Wilson	ALFRED A. SWANN Wilsey
BETTY JANE BLACKBURN Madison	DONALD VANCE FORTNEY Tecumseh	CHARLES JEREMIAH KLEINE Lawrence	BERNARD HUGO WALBURN Salina

* Assigned to class of 1939

† Assigned to class of 1938

16

SCHOOL OF EDUCATION

Presented by DEAN RAYMOND A. SCHWEGLER

Bachelor of Science in Education

VIRGINIA H. ANDERSON <i>St. Louis, Mo.</i>	GRACE LOUISE DeTAR Coffeyville	PLACIDA ROSE KOELZER Seneca	VETA ROGERS RIEGEL Trousdale
MARTHA JANE ANDREWS Abilene	*ESTHER ERICKSON Kansas City	MICKIE LEARNARD Lawrence	*MATTIE HANSEL ROAN Kansas City
*FRANK J. ANNEBERG, Jr. Leavenworth	GORDON WESLEY FIELDER, Jr. Lawrence	ELSIE EUNICE LOWELL Olathe	JACK HARDING SANDS Lawrence
*ELDORA H. ASHCRAFT WaKeeney	*MARY AGNES GABERDIEL Hutchinson	*AVIS SHOTWELL MANSUR <i>Richmond, Mo.</i>	LILY SCHMIDT Walton
MARIE GOFF AUSTIN Dodge City	KATHERINE LOUISE GRAVES Garden City	*DONIS ELLEN McDERMOND Lawrence	VIRGINIA SCHOOLING Lawrence
ETHEL VIOLA BEAMAN Uniontown	JAMES WILBUR GREENE Jewell City	*MAURICE EDRON McGAUGH Lawrence	GERALD LAMONT SMITH Rozel
EUGENE EDWIN BILLUPS <i>Kansas City, Mo.</i>	ELEANOR LOUISE GREGORY Kansas City	*RUTH MARGARET MONTZINGO Attica	*MARY ANNA FIELDS SMITH Kansas City
MARIE E. BLOOMFIELD Fort Scott	WILLIAM S. HALL Mission	RUTH MARY NELSON Newton	*GERTRUDE M. TAYLOR Bethel
WILMA NADINE BROOKS Yates Center	JACK MILTON HAPPY Ottawa	*PEARL WILLIS OTTO <i>Kansas City, Mo.</i>	*MILDRED M. THOMANN <i>St. Joseph, Mo.</i>
ADELINE MARIE BROWN Alton	VICTORY AGNES HAWKEY Kansas City	*ROBERT N. PALMER Lawrence	HOWARD GEORGE TRABANT Lawrence
MARY KATHLEEN BUNCE Louisburg	JULIA RUTH HENRY Lawrence	HELEN MAE PETERS Cuba	*JOSEPH B. TRIMELONI <i>Central City, Penn.</i>
*JOSEPHINE AMANDA COOK Pratt	LOLA IRENE HIGLEY Cummings	VERGIE P. RAY Mulvane	GEARLDINE ULM Lawrence
*ORVILLE LLOYD DAWSON Lawrence	CHESTER EUGENE HYNES Kansas City	MAX CUMMINGS REPLOGLE Coldwater	LOIS HELEN WISLER Harper
BONNELL BEATRICE DEISHER <i>Odessa, Mo.</i>	*HELEN MILDRED JENNINGS Kansas City	DANIEL JACKSON RHULE, Jr. <i>Aspinwall, Penn.</i>	KATHRYN MARIE ZENOR Hutchinson
	FLORA SAVILLA KAUFFMAN Topeka		

* Assigned to class of 1939

57

University Teacher's Diploma

E. MAXINE ALMON Coffeyville	WILMA NADINE BROOKS Yates Center	KATHERINE LOUISE GRAVES Garden City	MARJORIE JEAN KRESIE Meriden
VICTOR EARL AMEND Horton	ADELINE MARIE BROWN Alton	PATRICIA CORDELIA GREEN Lawrence	HARRIET IDALETTE KRUGER Kansas City
CHARLES McCELLEN AMYX Lawrence	CLARENCE L. BRUMBACK Hutchinson	JAMES WILBUR GREENE Jewell City	JOY RITCH LAWSON Independence
CRYSTELLE ANDERSON Tescott	MARY KATHLEEN BUNCE Louisburg	ELEANOR LOUISE GREGORY Kansas City	MICKIE LEARNARD Lawrence
VIRGINIA H. ANDERSON <i>St. Louis, Mo.</i>	LOUISE EDNA BUSH Englewood	WILLIAM S. HALL Mission	WILLIAM LEWIS Atwood
MARTHA JANE ANDREWS Abilene	MARY JOE CONNELL El Dorado	JACK MILTON HAPPY Ottawa	DONNA DOROTHY LINSDALE Lawrence
FRANK J. ANNEBERG, Jr. Leavenworth	JOSEPHINE AMANDA COOK Pratt	VICTORY AGNES HAWKEY Kansas City	EVELYN LONGERBEAM Herington
ELDORA H. ASHCRAFT WaKeeney	ORVILLE LLOYD DAWSON Lawrence	DOROTHY HELEN HEATHMAN Arkansas City	ELSIE EUNICE LOWELL Olathe
MARIE GOFF AUSTIN Dodge City	BONNELL BEATRICE DEISHER <i>Odessa, Mo.</i>	JULIA RUTH HENRY Lawrence	AVIS SHOTWELL MANSUR <i>Richmond, Mo.</i>
WILLA HENRIETTA BAKER Leavenworth	ONITA Z. DELLINGER Dodge City	LOLA IRENE HIGLEY Cummings	JOHANNA CORRINE MARTIN Paola
LENA ROSE BALDWIN Lawrence	GRACE LOUISE DeTAR Coffeyville	ELON L. HILLER Hutchinson	MARGARET D. McCARTY Salina
MARIANNA BANTLEON Edwardsville	LESTER CATES DOERR McCracken	EDNA MAE HOLLIS Kansas City	MARY JANE McCOY Emporia
ELIZABETH DECIMA BARCLAY Grinnell	ESTHER ERICKSON Kansas City	JULIA M. HUDSON Smith Center	DONIS ELLEN McDERMOND Lawrence
ETHEL VIOLA BEAMAN Uniontown	GORDON WESLEY FIELDER, Jr. Lawrence	ROBERT EDWARDS HUNT Lawrence	MAURICE EDRON McGAUGH Lawrence
RUTH MARGARET BECKWITH Hiawatha	ZENITH MAE FOWLER Norton	CHESTER EUGENE HYNES Kansas City	ERNESTINE DEATON MENGES Leavenworth
MARY LOUISE BELL <i>Meridian, Idaho</i>	ALMA LILLIAN FRANKLIN Hutchinson	MARTHA JO IRWIN Topeka	NANCY MARGARET MOORE <i>Cameron, Mo.</i>
EUGENE EDWIN BILLUPS <i>Kansas City, Mo.</i>	KERMIT FRANKS Winfield	ETTA MAE JACKSON Kansas City	RUSSELL ALDEN MOSSER Lawrence
PHYLLIS EVELYN BIRRER Grainfield	MARY AGNES GABERDIEL Hutchinson	HELEN MILDRED JENNINGS Kansas City	RUTH LORRAINE MURPHY Kansas City
JANE DUDLEY BLANEY <i>Kansas City, Mo.</i>	HOWARD ELTON GARRETT Shawnee	MURIEL HELEN JOHNSON Topeka	MARGARET E. NANNINGA Lawrence
MARIE E. BLOOMFIELD Fort Scott	HARRIET LOUISE GOODWIN Baxter Springs	FLORA SAVILLA KAUFFMAN Topeka	PATRICIA ESTHER NEAL Wichita
BETTY PATRICIA BOND El Dorado	REGINALD HAROLD GRABLE Elkhart	CARL S. KNOX Lawrence	RUTH MARY NELSON Newton
BETTY LADD BOWMAN <i>Kansas City, Mo.</i>	WILMA JEAN GRANT El Dorado	PLACIDA ROSE KOELZER Seneca	ERNESTINE JANE NICHOLS Osawatomie

MARY KENTON NOEL <i>Lee's Summit, Mo.</i>	MONTE ELIZABETH ROBBINS Lawrence	PAULINE ELETHA SHERMAN Topeka	MILDRED M. THOMANN <i>St. Joseph, Mo.</i>
RUTH HILDEGARD NYBLAD <i>Kansas City, Mo.</i>	FLORA FRANCES ROBERTS Lawrence	DAVID LEE SHIRK El Dorado	DOROTHY MAY THOMPSON Lawrence
RAYMOND WILSON O'BRIEN Osawatomie	MARY VIRGINIA RODRIGUEZ Horton	JEANETTE SINGLETON <i>Kansas City, Mo.</i>	HOWARD GEORGE TRABANT Lawrence
PEARL WILLIS OTTO <i>Kansas City, Mo.</i>	HELEN MARGARET RUNYON Peabody	MARY ELLEN SKONBERG <i>Kansas City, Mo.</i>	JOSEPH B. TRIMELONI <i>Central City, Penn.</i>
HELEN MAE PETERS Cuba	JACK HARDING SANDS Lawrence	ELIZABETH FINLEY SMITH <i>Kansas City, Mo.</i>	GEARLDINE ULM Lawrence
VERGIE P. RAY Mulvane	LILY SCHMIDT Walton	GERALD LAMONT SMITH Rozel	DORIS JEANNE WILLIAMS Lawrence
MAX CUMMINGS REPLOGLE Coldwater	VIRGINIA SCHOOLING Lawrence	MARY ANNA FIELDS SMITH Kansas City	LOIS HELEN WISLER Harper
DANIEL JACKSON RHULE, Jr. <i>Aspinwall, Penn.</i>	EVERETT NILES SCHRADER Hutchinson	WILLIAM LESLIE SPEARMAN Lawrence	DORCILLE WYRICK Leavenworth
ISABEL RICE Wathena	BARBARA EVALYN SCOTT Syracuse	MARY EMILY STURHAHN Topeka	BYRON AUGUSTUS YOST Sabetha
RALPH E. RICHARDSON Thayer	MARION ALBERTA SEAMANS Lawrence	MARY ELLEN SULLIVAN Ulysses	EMILY JANE YOUNT Arkansas City
VETA ROGERS RIEGEL Trousdale	FAITH LORENE SEELEY Russell	GERTRUDE M. TAYLOR Bethel	KATHRYN MARIE ZENOR Hutchinson
MATTIE HANSEL ROAN Kansas City			

133-190

SCHOOL OF BUSINESS

Presented by DEAN FRANK T. STOCKTON

Bachelor of Science in Business

*CHARLES SHIRK ARTHUR, Jr. Lawrence	EARLE W. DEEBLE Salina	JAMES DEXTER HARRIS <i>Denver, Colo.</i>	GEORGE MAURICE LOCK Lawrence
MARGARET FRANCES AUSTILL Lawrence	†ONITA Z. DELLINGER Dodge City	RAYMOND WILLIAM HARRIS Lawrence	WALTER MORGAN LODER Hutchinson
NATHAN AXEL <i>New York, N.Y.</i>	CHARLES W. W. DOWLING <i>Millvale, Pa.</i>	MELVIN K. HASS Herington	WILLIAM S. LOHMAN Oskaloosa
*WILLIAM T. BAILEY Hoxie	*EDWARD WESLEY DVORAK Salina	EUGENE LESLIE HAYNES Lawrence	HARRISON KENNETH LONG Salina
ELLIS BERNAL BARNHILL Lawrence	ALBERT PORT EARLY Harper	ROBERT A. HEDGES Wichita	*RODNEY E. LOUGHMILLER Onaga
VERNON L. BARTRAM Topeka	*HOWARD L. EDMONDS Baxter Springs	*NORMAN SEE HEMPHILL Lawrence	CHARLES GROVES LUCAS Ottawa
*FRANK TAYLOR BECKETT, Jr. <i>Kansas City, Mo.</i>	NORMAN S. EDMONDS Lawrence	LEO A. HENRICHS Athol	ALFRED CAMPBELL MANN <i>Kansas City, Mo.</i>
*OSCAR DWIGHT BEVERLY Burlingame	PATRICIA EISENHOWER Junction City	HOWARD DEAN HIETT Haven	CLYDE WILLIAM MASHETER Sabetha
DONALD C. BRAIN Pamona	ELDON J. ELLIOT Coffeyville	THOMAS M. HIGGINS, Jr. <i>Kansas City, Mo.</i>	ROBERT BUDGE MCKAY Wichita
*HARRY HOFFMAN BROWN Wichita	THOMAS EDWIN EVANS Kansas City	*JOHN C. HOCEVAR, Jr. Girard	*PATRICK JAMES McLEAN Concordia
VICTOR L. BRYANT Arkansas City	*OLGA BETH FARNEY Kiowa	BILL B. HOFFINE Lawrence	*FRANCIS BERNARD McNAMEE Leavenworth
*MARIE NADINE BURKE Kansas City	ROSELYN MARY FELTEN Kansas City	*WILLIAM HOGAN Wellsville	RONALD DARNELL MILAM Oil Hill
*SAMUEL A. CALDWELL <i>Kansas City, Mo.</i>	*EDGAR SEAMAN FINLEY Cottonwood Falls	DANIEL ROBERT HOPKINS Kansas City	DOUGLAS FRANKLIN MILLER Ft. Scott
WALLIS LEROY CAMPBELL Salina	JOHN LACUE FISHER <i>Kansas City, Mo.</i>	HAROLD LEE HOSFORD Topeka	JAMES R. MITCHELL Valley Falls
RICHARD F. CARY Hutchinson	WAYNE GEORGE FIXLEY Osawatomie	HOWARD EVERITT HOSFORD Topeka	WALTER RICHARD MIZE Atchison
T. KENNETH CEDARLAND Bonner Springs	*LOREN THURLOW FLORELL Topeka	BETTY HUGHES Lawrence	WILLIAM HENRY MONROE Fairview
MARION JOYCE CHAMPLIN Long Island	*ROBERT FINLEY FRAKES Elk Falls	WINIFRED CAROL JAMESON Lawrence	J. MORRIS MOON El Dorado
DORIS EVELYN COLEMAN Holton	ROBERT FRANCIS GALLOWAY Marysville	ARNOLD WILLIAM JOHNSON Axtell	FRANCIS LLOYD MOORE Lawrence
ARTHUR JESSE COLLINS Topeka	HENRY J. GEMPELER <i>Monroe, Wisc.</i>	HAROLD EDWIN JOHNSON Osage City	ERNEST ALDRICH MORSE Abilene
JOHN ARTHUR COSGROVE Olathe	ROBERT E. GLOTZBACH Wamego	*DE FOREST JONES Kansas City	VERLE ALLEN MYERS Chanute
VIRGIL Le ROY COURTWRIGHT <i>Kansas City, Mo.</i>	JOHN BURTON GOINS <i>Breckenridge, Mo.</i>	EUGENE L. KADEL Scottsville	CHARLES WAYNE NEES <i>Brazil, Ind.</i>
RAYMOND CORMIE DAVIDSON Hutchinson	*VIRGIL V. GREEN Greensburg	RAYMOND LEO KELLEY Kansas City	THOMAS GEORGE O'DONNELL Hutchinson
GUY FOSTER DAVIS, Jr. <i>Scotia, N.Y.</i>	LLOYD VINCENT GRESS Kansas City	*CECIL E. KENNEDY Smith Center	*STANLEY R. OLSON Erie
*J. KEITH DEAY Chanute	*ROBERT COOPER GUTHRIE Garden City	¶WILLIAM FRANCIS KILEY <i>Kansas City, Mo.</i>	*CHARLES E. PADDOCK, Jr. <i>Louisville, Ky.</i>
* Assigned to class of 1939	*KENNETH MILTON HAMILTON Manchester	RALPH ROY KINGSLAND Effingham	KERMIT LEE ROY PETERSON <i>Bentonville, Ark.</i>
§ Assigned to class of 1935	§JOHN GEORGE HAMPTON Kinsley	NORMAN CHARLES KRAEMER Marysville	HELEN VERA PIERCE Lawrence
† Assigned to class of 1938			
‡ Assigned to class of 1937			

- | | | | |
|--|---|--|---|
| LESTER FRED POJEZNY
<i>Oklahoma City, Okla.</i> | LYLE KEITH SCHAAF
Toronto | MARGARET THEO STRATTAN
<i>New York City, N.Y.</i> | WILLIAM KANSAS WAUGH, Jr.
Eskridge |
| ROBERT ALLEN POWELL
Wichita | W. KEITH SCHUERMAN
Salina | DELSON H. THELEN
Kansas City | EDWIN H. WIENECKE
<i>Tulsa, Okla.</i> |
| EARLE K. RADFORD, Jr.
<i>Kansas City, Mo.</i> | HENRY SCHWALLER
Hays | J. MAC TINKLEPAUGH
Kansas City | ERNEST EDWARD WILES
Macksville |
| LEO W. RHODES
Wichita | ROBERT HAZEN SHAEFFER
Atchison | WARREN J. TURNER
Mankato | ROBERT EUGENE WILEY
Hutchinson |
| PAULINE LA NETTE RICHARDS
Lawrence | *HENRY HAROLD SINNING
Holton | WILLIAM HUTCHISON UDELL
Kansas City | HARRY JAMES WINKLER
Kansas City |
| LESLIE IVAN RIEGER
Fairview | *CHARLES THOMAS SKINNER, Jr.
<i>Kansas City, Mo.</i> | BRUCE HERBERT VORAN
Pretty Prairie | DARWIN HARRIS WOLKOW
Wichita |
| JOHN L. ROBINSON
Lawrence | *CLYDE LEWIS SMITH
Dodge City | RODERICK WEST WAKELAND
Independence | *PAUL F. WRAY
Lawrence |
| LUCY ELLEN RUNDALL
Norton | ROBERT NELSON SMITH
Ft. Scott | HEINZ R. WALTHER
Salina | BETTY ANN YANKEE
<i>Kansas City, Mo.</i> |
| GLENN EDGAR RUSSELL
Wichita | WESLEY A. SONGER
Neodesha | *ROBERT TRACY WARD
<i>Kansas City, Mo.</i> | CHARLES DAVID YEOMANS
Lawrence |
| JOSEPH GREASON RYAN
<i>Brooklyn, N.Y.</i> | CHESTER BYRON SPRAY
Lawrence | JACK WASSMER
<i>Kansas City, Mo.</i> | BRUCE L. ZINK
Turon |
| BETTY GENE SAYLES
<i>Kansas City, Mo.</i> | WALLACE F. SPRINGER, Jr.
<i>Pinckneyville, Ill.</i> | LEONARD ERBIE WATSON
Augusta | ANTHONY GEORGE ZOLLO
<i>Waterbury, Conn.</i> |

146

SCHOOL OF LAW

Presented by DEAN FREDERICK J. MOREAU

Bachelor of Laws

- | | | |
|--|--|---|
| ALFRED J. ANDERSON, A.B. 1938
Iola | IMA MAE GOEHRING, A.B. 1938
Lawrence | GLENN E. McCANN, A.B. 1938
Elk City |
| E. KEITH BEARD, A.B. 1936, Sterling
College, A.M. 1937, Chicago Univ.
Fowler | CHARLES EDGAR HENSHALL, A.B. 1938
Osborne | CORDELL DAVID MEEKS, A.B. 1940
Kansas City |
| *EDWARD M. BEOUGHER, A.B. 1937
Grinnell | ULICE MERTON HOOVER, A.B. 1936
Lawrence | HENRY A. ONSGARD, Jr., A.B. 1937,
University of Wichita
Wichita |
| LEO BRENNISEN, A.B. 1938
Kansas City | FLOYD MARVIN KELLY, A.B. 1938
Lawrence | EDMUND LOWELL PAGE, B.S. 1937,
St. Benedict's College
Atchison |
| NORMAN LOOSE BROWN, A.B. 1938
Lawrence | CHARLES HAZEN KIMBALL, A.B. 1938
Parsons | *HUGH PHILLIPS
Eldon, Mo. |
| EUGENE EARLE BUCHANAN, A.B. 1940
Chanute | *WALTER KUEHNER, Jr.
Chanute | *MARVIN D. PRICE, A.B. 1935, Baker Univ.
Baldwin City |
| CHARLES MYERS CASSEL, A.B. 1938
Lawrence | PAUL ANDREW LACKIE, A.B. 1937,
McPherson College
McPherson | *JAMES VINCENT RIDDEL, A.B. 1937,
University of Wichita
Wichita |
| *LAWRENCE EDMOND CHRISTENSON
Olsburg | LEON ERNEST LALLIER, A.B. 1937
Bethel | J. LOGAN SHUSS, A.B. 1938
Larned |
| *WILLIAM WINSTON COCHRANE,
B.S. Bus. 1934
<i>Kansas City, Mo.</i> | HERBERT LOUIS LODGE, A.B. 1938
Independence | JOHN DAVID STEWART, A.B. 1938
Wellington |
| CHESTER ALDEN FLEMING
Lawrence | OSCAR AUSTIN MALL, A.B. 1937
Broughton | *JAMES SAMUEL TERRILL, A.B. 1937
Ulysses |
| DONALD CHARLES FOSS, A.B. 1938
Garfield | DANIEL BENJAMIN MARSHALL, Jr.
A.B. 1938
Lawrence | FRANK WILSON THOMPSON, A.B. 1938
Iola |
| LEIGHTON ARCHER FOSSEY, A.B. 1938
Nickerson | CLAUDIA MAXINE MAXWELL,
B.S. 1938, Kansas State
Lawrence | CHARLES W. WARD, A.B. 1938
Peabody |

Degrees are from the University of Kansas unless otherwise noted.

36

THE RESERVE OFFICERS TRAINING CORPS

Presented by LT. COL. KARL F. BALDWIN, P.M.S.&T.

Appointed Second Lieutenant in the Infantry Section, Officers Reserve Corps

- | | | | |
|--|--|---|-------------------------------------|
| PAT ANTHONY BARELLI
<i>Kansas City, Mo.</i> | DANIEL ROBERT HOPKINS
<i>Kansas City, Mo.</i> | †STANLEY FELLER PARR
Topeka | ROBERT NELSON SMITH
Fort Scott |
| DONALD SIEMER BROSE
Clay Center | HAROLD LEE HOSFORD
Topeka | THEODORE LOGAN RAYMOND
<i>Kansas City, Mo.</i> | CARL JOHN SPEHR
Hoisington |
| *ELDRETH K. CADWALADER
Topeka | STEWART JONES
Neodesha | CLARENCE JUNIOR ROBINSON
Newton | DOUGLAS JAMES TARBET
Leavenworth |
| ALVIN FORREST GRAUERHOLZ
Kensington | BENJAMIN S. MANDEVILLE
Lawrence | REX RUSSELL SAGE
Oberlin | LEILYN MALHORN YOUNG
Leavenworth |
| MAURICE CLAVELLE HOLDEN
Cherryvale | THOMAS JAMES MORRIS, Jr.
Wichita | WILLIAM A. SMILEY, Jr.
Junction City | |

* Assigned to class of 1939

† Assigned to class of 1938

19

Appointed Second Lieutenant in the Coast Artillery Section, Officers Reserve Corps

MARVIN BARNES ALLEN Lawrence	*JOSEPH FREDERICK GIECK Kansas City	WILLIAM HENRY MONROE Fairview	LEONARD IVO SCHROETER Topeka
CHARLES JOHN BAER Topeka	CLARENCE THOMAS HAMMOND Osawatomie	RAYMOND TARDIN NAPIER Morris Plains, N.J.	KENNETH FORD TROUP Kansas City
DONALD DALE DeFORD Alton	ROBERT LOUIS MARIETTA Salina	GODFREY SCHUYLER RICE, Jr. Kansas City, Mo.	†THOMAS TUDOR WALTON Kansas City, Mo.
SAMUEL EDWIN FORSYTH Medicine Lodge	JAMES RAYMAN MITCHELL Valley Falls	GEORGE ELLSWORTH RIPPEY Sedalia, Mo.	ROBERT WESLEY WILLIAMS Sterling

* Appointed at close of camp, 1940

† Certificate of Eligibility, not 21 years of age at present

16-35

SCHOOL OF MEDICINE

Presented by DEAN HARRY R. WAHL

Certificate of Nursing

CLARA LUCILLE BAKER, B.S. in Nursing 1940 Ozawkie	DOROTHY GRIER Pratt	BERTHA IRENE SPIRE Marysville
MARY ALICE ROOT BAIN Olathe	ROSE VIRGINIA HAWKINS Columbus	FRANCES PRESHIA STEPHENSON, B.S. in Nursing 1940 Norton
CHARLOTTE LOUISE BELL Columbus	GLADYS HESTER Kansas City, Mo.	ALPHA MAE TAINTER Kansas City
MARTHA ESTHER BRILL, B.S. in Home Economics and Nursing 1940, Kansas State College Westmoreland	LORA NELLE JONES Glen Elder	FRANCES BURLENE THURMAN Abilene
ETHEL DOLORES CASH Ottawa	FLORA ELVA JUNG, B.S. in Nursing 1940 Lawrence	MABEL ELLEN TOOTHAKER, B.S. in Home Economics and Nursing 1940, Kansas State College Protection
GERALDINE ERMA COWLEY Cottonwood Falls	AGNES MAXINE JUSTIS Kansas City	ELSIE UPPELDAHL Scott City
LILLIAN MARIE CRENSHAW Kansas City	RUTH MAY KING, B.S. in Home Economics and Nursing 1940, Kansas State College Council Grove	DOROTHY AGNES WARNER, B.S. in Home Economics and Nursing 1940, Kansas State College Goodland
MARION ARLENE CROSS, B.S. in Home Economics and Nursing 1940, Kansas State College Wilson	ESTHER KOVAR Rossville	DORIS MARJORY WHITE DeBois, Nebr.
LUCILLE MAE DITTMAN Kansas City	MARGERIE JOYCE McKIM Salina	DOLORES ELLENE WILLIAMSON, B.S. in Home Economics and Nursing 1940, Kansas State College Little River
DORIS ETHEL FRANCIS Wichita	NADINE OLIVE NICE Parsons	FERNE KATHERINE WINEINGER Kansas City
ANNE LOUISE FRIESEN North Newton	M. NINA PHIPPS Irwin, Mo.	MARY JO WINTER, B.S. in Home Economics and Nursing, 1940, Kansas State College Dresden
LAURA JANE GOODALL, B.S. in Home Economics and Nursing 1940 Kansas State College Coats	VELMA MAXINE REEVES Louisburg	
	M. CHRISTINE RIDGELY, A.B. 1935, MacMurray College Springfield, Ill.	
	GLADYS MINNIE SCHULZ Great Bend	

37

Certificate of Laboratory Work

BETTY BARNES, A.B. 1939 Leavenworth	ERMAL IRENE DEARBORN, B.S. 1939, Kansas State College, Manhattan Manhattan	CHARLOTTE STAFFORD, A.B. 1939 Neodesha
PHYLLIS IRENE BOYLE, B.S. 1939, Kansas State College, Manhattan Manhattan	GEORGIANA ALICE FIX, A.B. 1932, Indiana University Kansas City	OLLIE IRENE STONE, A.B. 1939 Horton
RUTH CAROLINE CADY, A.B. 1934; A.M. 1935 Lawrence	DOROTHY OWSLEY BALLARD, A.B. 1939 Overland Park	MARY ELIZABETH WILSON, A.B. 1939 Ness City

9

Certificate of Residency

ARTHUR WILBUR EVANS, A.B. 1934; M.D. 1938. One year Eureka	HUBERT M. FLOERSCH, A.B. 1931; B.S. in Med. 1933; M.D. 1935 Four years Topeka	HENRY FRANCIS QUINN, B.S. in Med. 1933; M.D. 1936. Three years Kansas City, Mo.
JOHN C. FARIS, M.D. 1936, Washington U. One year Caruthersville, Mo.	RAE ARTHUR RICHESON, A.B. 1930, State U. of Iowa; M.D. 1936, State U. of Iowa. Three years Marshalltown, Iowa	DAVID JAMES STUMP, A.B. 1933; M.D. 1936. Three years Kansas City, Mo.
WALLACE E. NISSEN, B.S. 1934, U. of S. Dakota; M.D. 1937, Rush Med. College. One year Artesian, South Dakota	FRED MAYES, B.S. in Med. 1936; M.D. 1938. One year Kansas City	

8

Certificate of Interneship

- | | | |
|--|--|---|
| JAMES DALE BENNETT, A.B. 1935; M.D. 1939
Eskridge | W. HENRY MERRITT, A.B. 1934, U. of Colo.; M.D. 1939, U. of Colo.
Denver, Colo. | HARRY STATLAND, M.D., 1939
Kansas City, Mo. |
| ROBERT JAMES BOODY, A.B. 1936; M.D. 1939
Kansas City, Mo. | RAYMOND LANCING PENDLETON, M.D. 1939
Independence | GORDON STANLEY VOORHEES, B.S. 1937; M.D. 1939
Leavenworth |
| BERNARD A. DONNELLY, M.D. 1939
Parsons | RAYMOND DONALD PRUITT, B.S. 1933, Baker U.; B.A. 1936, Oxford U.
M.D. 1939
Kansas City | WESLEY NESTOR WARVI, A.B. 1932, Northland College; M.S. 1937, U. of Wisc.; M.D. 1939, U. of Wisc.
Madison, Wisc. |
| HENRY WALLACE LANE, A.B. 1933; M.A. 1935; M.D. 1939
Kansas City | | |

10

Doctor of Medicine

- | | | |
|---|--|---|
| ARTHUR ADELMAN
Kansas City, Mo. | HELEN LEONE FINLEY, A.B. 1934, College of Emporia
Emporia | FORREST EUGENE RICHERT, A.B. 1936, Kansas State Teachers College,
Pittsburg
Wichita |
| GLENN HARRIS BAIRD, A.B. 1932
Agenda | BERNARD BERLIN GADWOOD, B.S. Med. 1938
Kansas City, Mo. | HARRY MARSHALL ROACH
Lawrence |
| JOHN R. BARNHILL, A.B. 1936, University of Wichita
Wichita | NORMAN ARTHUR GALITZKI, A.B. 1936, B.S. 1937, Washburn College
Topeka | HAROLD A. ROSIER
Belton, Mo. |
| FRED DANIEL BATY, B.S. Med. 1938
Tribune | GLEN HARLEY GARRETT
Clay Center | EDWARD A. SAMUELSON
Kansas City |
| MONTI LOUIS BELOT, A.B. 1936, A.M. 1938
Clyde | KARL BARNARD GONSER, B.S. Med. 1938
Leavenworth | AMBROSE BYRON SHIELDS, B.S. Med. 1938
Wellsville |
| LOUIS JOHN BONANNO, A.B. 1936
Kansas City | WILLIAM HENRY GUTHRIE, B.S. 1931, Northwestern University
Garden City | RONALD A. SIMPSON
Hutchinson |
| B. EARLE BRICKEY, B.S. 1926, A.B., M.S. 1933, Kansas State Teachers College, Pittsburg
Partridge | GLEN S. HARMAN, A.B. 1937
Atchison | CLARENCE HART STEELE, A.B. 1936
Sabetha |
| VERNON P. BRICKEY, B.S. 1933, Kansas State Teachers College, Pittsburg
Partridge | CHARLES FRANKLIN HENDERSON
Parsons | MARVIN OMAR STEFFEN, B.S. 1929, McPherson College
Ellinwood |
| THOMAS SHERMAN BROWNELL, B.S. Med. 1938
Kansas City, Mo. | ELMER A. HOF, A.B. 1937
Kansas City | HUGH STEPHENS, A.B. 1936
Kansas City |
| NORMAN A. BURKETT, A.B. 1937
Newton | JOHN ALLISON HOLMES, B.S. Med. 1938
Lawrence | RICHARD LEE SUTHERLAND, B.S. 1933, University of Missouri
Kansas City, Mo. |
| HOWARD CURTIS BURKHEAD, A.B. 1937
Mound City | JOHN BENNETT JARROTT
Hutchinson | CHARLES D. TERRY
Ellsworth |
| FRANK LAWRENCE BYNUM
Emporia | RALPH E. JORDAN, B.S. 1939, York College
Beloit | DEAN JACK TILLER, B.S. Med. 1938
Fairview |
| ARTHUR SAMUEL CAIN, Jr., A.B. 1936
Leavenworth | PAUL R. LEFFLER, B.S. 1925, Kansas State Teachers College, Pittsburg
McCune | DONALD WARREN TODD, B.S. Med. 1938
Clay Center |
| CLAYTON WAYNE CLARK, A.B. 1937
Centerville | HERLAN ORVILLE LOYD, A.B. 1935
Salina | NEWMAN V. TREGER, A.B. 1937
Independence |
| GARLAND LEROY CAMPBELL
Wichita | JOSEPH WARREN MANLEY, B.S. 1929, Washburn College
Ashland | LESTER ELDEN ULREY, A.B. 1937
St. John |
| JAMES WILLIAM CAMPBELL
Kansas City, Mo. | RICHARD GORDON MEISBURGER
Overland Park | RONALD C. VETTER, A.B. 1935, B.M. 1936, McPherson College
Lawrence |
| KARL AYDELOTTE CATLIN, A.B. 1932, University of Wichita
Eureka | MORGAN L. MOLLOHAN, A.B. 1936, University of Wichita
Wichita | LARRY E. VINZANT, A.B. 1936, University of Wichita
Salina |
| GORDON CLARE COOK, A.B. 1937
Galena | VICTOR REUBEN MOORMAN, A.B. 1937
Nickerson | JOHN DAVID WAY, A.B. 1934
Pittsburg |
| ALFRED GOSSETT DIETRICH, A.B. 1937
Kansas City, Mo. | GEORGE LOREN NORRIS, A.B. 1932, A.M. 1938
Olathe | WILLIAM ELDON WENDEL, A.B. 1936, University of Wichita
Wichita |
| RUTHERFURD SCOTT DUEMLER, A.B. 1934, Kansas State Teachers College, Pittsburg
Pittsburg | MAX ENSIGN PFUETZE
Manhattan | CLAUDE SAMUEL WHITSON, A.B. 1936, University of Wichita
Wichita |
| HAROLD L. DYER, A.B. 1936
Oberlin | HAROLD E. POOLE, A.B. 1934, College of Emporia
Emporia | ROBERT BENJAMIN WILSON
Kansas City |
| DeMERLE EMERY ECKART, A.B. 1937
Tescott | MARJORIE McDONALD PYLE, B.S. 1933, Kansas State College
Kansas City | WALTON CLAY WOODS, A.B. 1937
Kansas City, Mo. |
| EUGENE KLASSEN ENNS
Newton | DAN O. RATZLOFF, B.S. 1934
Newton | ROBERT PAUL WRIGHT, A.B. 1934, Washburn College
Denison |

Degrees are from the University of Kansas unless otherwise noted.

69-133

THE GRADUATE SCHOOL

Presented by DEAN ELLIS B. STOUFFER

Master of Arts

- | | | | |
|--|--------------|---|-------------|
| LYLE O. AMBERG, Howard, A.B. 1938, University of Kansas
<i>Thesis: Orientation studies in phenyl p-tolyl ether.</i> | Chemistry | RUTH MARIE FAUROT, Smith Center, A.B. 1938, Park College
<i>Thesis: The influence of Victor Hugo on Algernon Charles Swinburne.</i> | English |
| FRANK J. ANNEBERG, Jr., Leavenworth, A.B. 1933, B.S. Educ. 1939, University of Kansas
<i>Thesis: A study of public school accidents in Kansas City, Missouri.</i> | Education | JOSEPH SIMEON FLIPPER, Kansas City, Missouri, A.B. 1939, University of Kansas
<i>Thesis: A course in beginning algebra designed to give training in reflective thinking.</i> | Education |
| BENJAMIN FRANKLIN BARRETT, Topeka, A.B. 1938, Washburn College
<i>Thesis: Agricultural labor and unemployment compensation: A study of the exclusion of agricultural labor by the social security act of 1935 and the amendments of 1939.</i> | Economics | ARDIS H. HAMILTON, Spickard, Missouri, English, A.B. 1930, University of Kansas
<i>Thesis: A detailed interpretation of the text of T. S. Eliot's <i>The Waste Land</i>.</i> | English |
| M. LEON BAUMAN, Lawrence, B.S. 1925, Oklahoma Agricultural and Mechanical College
<i>Thesis: A study of Brucella Abortus.</i> | Bacteriology | DONALD TRUMAN HARBERSON, Lawrence, A.B. 1938, Washburn College
<i>Thesis: The tendency toward collectivism in commercial banking.</i> | Economics |
| RALPH W. BLOXOM, Pratt, A.B. 1922, Southwestern College
<i>Thesis: Facts relating to the educational and social background of a representative group of Kansas educators.</i> | Education | MAURICE A. HATCH, Lawrence, A.B. 1936, University of Kansas
<i>Thesis: The Latin letters of Roger Ascham and John Sturm: A translation.</i> | English |
| JOHN MARTIN BURGER, Independence, A.B. 1939, University of Kansas
<i>Thesis: The Desargues Quadrangle-Quadrilateral configuration in ordinary and modular projective planes.</i> | Mathematics | JOSEPH S. HENRY, Waco, Texas, A.B. 1916, Wiley College
<i>Thesis: A diagnostic and remedial study in arithmetic fundamentals with integers.</i> | Education |
| IRA GILMAN COLLINS, Parker, A.B. 1938, University of Kansas
<i>Thesis: A study of slow lactose fermenting bacteria in drinking water supplies of Kansas.</i> | Bacteriology | NATHAN KNOLL HERSH, Holton, A.B. 1938, Baker University
<i>Thesis: The ordinary linear differential equation with constant coefficients.</i> | Mathematics |
| CLARICE CRAWFORD, Spring Hill, A.B. 1937, University of Kansas
<i>Thesis: A concordance to <i>The Two Noble Kinsmen</i> by Shakespeare and Fletcher.</i> | English | JAMES L. HIGHT, Lawrence, A.B. 1936, University of Colorado
<i>Thesis: The embryological development of the pigmented tissue in the eye of the chick.</i> | Anatomy |
| EARL HAMILTON DEARBORN, Manhattan, A.B. 1938, University of Kansas
<i>Thesis: The determination of the pH of circulating blood and the pH changes in the coronary circulation of the dog.</i> | Physiology | EUNICE R. HYRE, Lawrence, A.B. 1927, University of Kansas
<i>Thesis: Circles associated with three non-collinear points.</i> | Mathematics |
| OWEN ALLEN DeWOODY, Ottawa, A.B. 1937, University of Kansas
<i>Thesis: A study of asphalt produced from some western Kansas crude oils.</i> | Chemistry | GEORGE WILLIAM INESON, Waterbury, Connecticut, A.B. 1939, University of Michigan
<i>Thesis: The conception of the ideal poet in the early nineteenth century.</i> | English |
| GUSTAVE A. EDIGER, North Newton, B.S. 1932, Bethel College
<i>Thesis: Reduction of aromatic nitro and dinitro compounds with ammonium sulfide.</i> | Chemistry | FRANK LEWIS IRWIN, Lyndon, A.B. 1938, University of Kansas
<i>Thesis: A study of 298 campers at Camp Gravois (summers 1938 and 1939).</i> | Education |
| IVAN DALE EMBERS, Inman, B.S. 1938, McPherson College
<i>Thesis: Studies on the Clemmensen reaction.</i> | Chemistry | WILLIAM P. JENSEN, Ames, Iowa, B.S. 1937, Iowa State College
<i>Thesis: Newspaper libel in Iowa.</i> | Journalism |
| JOHN LAWRENCE ENDACOTT, Lawrence, A.B. 1937, University of Kansas
<i>Thesis: The Rorschach test and juvenile delinquency: A sociopsychobiological approach.</i> | Psychology | BERT WILLIAM JOHNSON, Phillipsburg, A.B. 1935, Washburn College
<i>Thesis: Studies in the semantics of animal names in English.</i> | English |
| BARBARA FARLEY, Hutchinson, A.B. 1936, University of Kansas
<i>Thesis: The objectives in the teaching of the social studies in Kansas.</i> | Education | ROBERT MAX KELLEY, Lamoni, Iowa, A.B. 1934, State University of Iowa
<i>Thesis: Motor carrier regulation in Kansas.</i> | Economics |
| ROBERT L. FAUCETT, Independence, Missouri, A.B. 1938, University of Kansas
<i>Thesis: A study of the "Vi" antigen of E. typhi.</i> | Bacteriology | EUGENE ELLIS KENAGA, Midland, Michigan, B.S. 1939, University of Michigan
<i>Thesis: <i>Halobatinae</i> of the Snow collection.</i> | Entomology |

- WILLIAM HENRY KESTER, Lawrence, A.B. 1937,
University of Kansas
Thesis: The statistical demand function for labor. Economics
- LOUIS CORNEILUS KUITERT, Kalamazoo, Michigan,
A.B. 1939, Kalamazoo College
Thesis: Gecrinae in University of Kansas collections. Entomology
- BARBARA GEVENE LANDRITH, Lawrence, A.B. 1939,
University of Kansas
*Thesis: A study of certain aspects of children's
thinking with special reference to mental age.* Psychology
- G. WALDEMAR LINDBERG, Hastings, Nebraska, B.S. 1927,
McPherson College
*Thesis: The status of venereal disease instruction in
Kansas high schools.* Education
- ROBERT CURTIS LOMMASSON, Topeka, A.B. 1938,
University of Kansas
*Thesis: Comparative anatomy within the
genus chamaesyce.* Botany
- MERVEL P. LUNN, Kansas City, Missouri, A.B. 1935,
Park College
*Thesis: The history and administration of the Kansas
Forestry, Fish and Game Commission.* Political Science
- GLADYS L. MASON, Fort Scott, A.B. 1937,
University of Kansas
Thesis: James Boswell in the eyes of his contemporaries. English
- NILA BYRL McCONN, Fort Scott, A.B. 1930,
University of Kansas
*Thesis: The portrayal of New England life by
Harriet Beecher Stowe.* English
- MILDRED HUNGATE McCORMACK, Kansas City, Missouri,
B.S. Educ. 1934, Teachers College of
Kansas City
Thesis: A famous story reader for grade V. Education
- ARTHUR R. MILLER, Lawrence, A.B. 1935,
University of Kansas
*Thesis: An analysis of the problem of one-teacher
school district reorganization in Kansas with
special reference to Douglas County.* Education
- WINSTON RIVARD MILLER, Lawrence, A.B. 1936,
University of Kansas
Thesis: Studies on natural bacteriolysins. Bacteriology
- MABEL MIZE, Harper, A.B. 1925, Ottawa University
*Thesis: A cultural-vocational curriculum in business
education.* Education
- KENNETH BOYD MOORE, Pratt, A.B. 1938,
University of Kansas
Thesis: Scientific attitudes and climatic fluctuations. Psychology
- DALLAS MYERS, Beason, Illinois, B.S. 1931,
Illinois Wesleyan University
*Thesis: Status of biological sciences in Illinois
high schools.* Education
- HARVEY F. NELSON, Coyville, A.B. 1934,
Ottawa University
Thesis: An economic history of Chanute, Kansas. History
- VETE NOWOSINSKE, Kansas City, Kansas, A.B. 1939,
University of Kansas
Thesis: Studies of sulfuric acid solutions. Chemistry
- EDNA ELVERA NYQUIST, McPherson, A.B. 1931,
McPherson College
Thesis: The prose works of Lord Dunsany. English
- THOMAS GROVER ORR, Jr., Kansas City, A.B. 1938,
University of Kansas
Thesis: A study of the origin of osteoclasts. Anatomy
- CURTIS V. PACKARD, Lawrence, A.B. 1934,
University of Kansas
*Thesis: A study of the endodermis as it occurs in the
roots of a few herbaceous angiosperms.* Botany
- NORMA PARRY, Kansas City, A.B. 1932, Park College
Thesis: Fiction as a source for American drama. English
- I. HAMILTON PERKINS, Lawrence, Ph.C. 1934, B.S. 1935,
University of Kansas
*Thesis: A study of the latent tendency toward sickling
of the erythrocytes of normal Negroes in
Lawrence, Kansas.* Bacteriology
- RUTH RAYNOLDS, Clay Center, A.B. 1925,
University of Kansas
*Thesis: A study of the personal essay in the first ten
years of the Atlantic Monthly as an indication of
the merit and culture of the period.* English
- ANNA CHRISTINE REARICK, Santa Rosa, New Mexico,
A.B. 1917, University of Kansas
Thesis: Stuart Pratt Sherman, critic. English
- JULIE NORMA REHG, El Dorado, A.B. 1938,
University of Kansas
*Thesis: The femmes pratiques et logiciennes in the
surprises de l'amour of Marivaux.* French
- GERALDINE PETTIT-ROGERS, Neodesha, A.B. 1923,
University of Kansas
*Thesis: Science as an influence on the writings of
Oliver Wendell Holmes.* English
- DONALD HUGHES RONEY, Topeka, A.B. 1933,
University of Kansas
Thesis: The research problem in unemployment insurance. Political Science
- GERTRUDE RUTTAN, Lawrence, A.B. 1925,
Kansas Wesleyan University
*Thesis: A comparison between language and non-
language groups in the achievement of English
grammar and vocabulary.* Education
- JESSIE MARIE SAILER, Independence, A.B. 1939,
University of Kansas
*Thesis: The European Jewish question as presented
by Jerome and Jean Tharaud.* French
- JOSEPHINE LANTZ SAMS, Salina, A.B. 1924,
University of Kansas
*Thesis: The status of physical education for girls in
the senior high schools of Kansas.* Education
- MAURICE LEROY SHOBE, Wellington, A.B. 1935,
University of Kansas
*Thesis: Teaching problems in the Osawatomie school
system.* Education
- MARLOW CANON SHOLANDER, Topeka, A.B. 1936,
University of Kansas
*Thesis: Some properties of a space whose points are
matrices of point sets.* Mathematics
- MARY LOUISE SMITH, Topeka, A.B. 1928,
Washburn College
Thesis: Freta a la vida by Manuel Linares Rivas. Spanish
- WILLIAM JONATHAN SMITHER, Wichita, A.B. 1939,
University of Wichita
*Thesis: "Realismo" and "realidad" in the novels of Miguel
de Unamuno.* Spanish
- CLARENCE RAY SPONG, Great Bend, B.S. 1932,
Ottawa University
*Thesis: An analysis of certain factors involved in the
study of plane geometry.* Education
- JAMES MATHER SPRAGUE, Lawrence, A.B. 1938,
University of Kansas
*Thesis: A study of the hyoid apparatus of the mammalian
subfamily Cricetinae.* Zoology
- ISAAC GLENN STEVENSON, Parsons, A.B. 1937, Bethel
College
Thesis: Orientation studies of 4-chloro diphenyl ether. Chemistry

- HELEN GLADYS COPELAND SUTHERLAND, (deceased),
Quenemo, B.S.Educ. 1921, University of Kansas
*Thesis: Dartmoor life as seen through the Widecombe
edition of Eden Phillpotts' novels.* English
- DOROTHY MIKSCH SUTTON, Topeka, A.B. 1939,
Washburn College
*Thesis: A study of laughter and humor in kindergarten
children.* Psychology
- DONALD WAYNE TAYLOR, Topeka, A.B. 1939,
Baker University
*Thesis: The remembering of visual form: A comparison
of theories of memory.* Psychology
- GARTH JOHNSON THOMAS, Lawrence, A.B. 1938,
Kansas State Teachers College of Pittsburg
*Thesis: Intersensory relations: The influence of vision
on sound localization.* Psychology
- ZELMA D. THOMPSON, Fort Scott, A.B. 1925,
University of Kansas
Thesis: A floral study of Bourbon County, Kansas. Botany
- ERNST A. UHRLAUB, Lawrence, A.B. 1921, University
of Kansas
*Thesis: A study of the amount of activity of high
school players in the game of basketball.* Education
- OTTO D. UNRUH, North Newton, A.B. 1928,
University of Kansas
*Thesis: Schisms of the Russian Mennonites of Harvey,
McPherson, and Reno Counties, Kansas.* Sociology
- PORTIA LOYETTA VAUGHAN, Tablequah, Oklahoma,
A.B. 1928, B.M. 1929, McPherson College
*Thesis: An investigation of music as taught in a
government Indian school in Oklahoma.* Education
- THADDEUS HUG WHITE, Manhattan, A.B. 1939,
University of Kansas
*Thesis: The influence of irradiated ergosterol upon the
rate of disappearance of intravenously injected
calcium chloride, and the corresponding changes
in inorganic and ionic blood calcium; inorganic
(acid free) phosphate; protein; and N. P. N.* Physiology
- MARY GOSHORN WILLIAMS, Lawrence, A.B. 1938,
University of Kansas
*Thesis: Growth of perception in children as revealed
in responses to the Rorschach cards.* Psychology
- WALDO W. WILMORE, Newton, A.B. 1934,
University of Missouri
*Thesis: Relative validity of three group readiness
tests in predicting reading achievement.* Education
- LUCILLE DANTE WILSON, Larned, A.B. 1933,
University of Kansas
Thesis: An attempt to predict teaching success. Education

78

Master of Science

- DUCIE CORNELL CHADS, Medicine Lodge, B.S.Ch.E.
1938, University of Kansas
Thesis: Oil-field brine corrosion inhibition studies. Chemical Engineering
- EDWARD WILLIAM HOKANSON, Spokane, Washington,
B.S. (C.E.) 1938, University of Idaho
*Thesis: The installation of a photo-elasticity
laboratory at the University of Kansas.* Civil Engineering
- GEORGE CONGDON HOLLINGER, Tulsa, Oklahoma,
B.S.Min.E. 1939, University of
Kansas
Thesis: Subsurface measurements. Petroleum Engineering
- KURT SPRENGLING, Chicago, Illinois, B.S. (M.E.)
1938, University of Illinois
*Thesis: Cable tool drilling: A study of the relation
between the natural frequencies of the cable
tool system and the operating strokes per
minute.* Petroleum Engineering
- HAYDEN ZIMMERMAN, Kansas City, Missouri, B.S.M.E.
1934, Georgia School of
Technology
*Thesis: Coal combustion as a function of furnace
volume.* Mechanical Engineering

5

Master of Music Education

- OSCAR L. BUTLER, Ottawa, A.B. 1939, Ottawa University
- HAL DAVIS DELLINGER, Dodge City, B.M.E. 1939, University of
Kansas
- RALPH HAWLEY, Lawrence, B.M.E. 1936, B.M. 1937, University
of Kansas
Thesis: A melodic method for clarinet.
- PAUL LAWRENCE MARTS, Lawrence, B.S.Mus. 1933, B.S.Educ.
1936, Kansas State Teachers College of Emporia
- LOUIS LUDWIG MASER, Fort Pierce, Florida, B.M.E. 1939,
University of Kansas
- HAZEN L. RICHARDSON, Ottawa, B.M. 1921, B.M.E. 1933,
Bethany College
- W. GLENN RUFF, Burdett, B.S.Educ. 1930, Fort Hays Kansas State
College
- JOYCE ELLEN WENTZ, Atchison, B.M. 1930, University of Kansas
Thesis: Musical training of elementary school teachers in service.

8

Master of Science in Education

- EVERETT IRVIN BASSETT, Kansas City, B.S.Educ. 1932, Kansas State Teachers College of Pittsburg
Thesis: The loss of Negro pupils from junior high school.
- HERSCHEL ALBERT BILLINGSLEY, Kansas City, B.S.Educ. 1934, Kansas State Teachers College of Emporia
Thesis: An analysis of Edgar Watson Howe's style of writing as a unit in high school English.
- DESSA JANE BUSH, Lawrence, B.S.Educ. 1932, Kansas State Teachers College of Emporia
Thesis: A study of art education for the elementary grades and a course of suggested activities with possible outcomes.
- GORDON HENRY CLUCAS, St. Louis, Missouri, B.S.Educ. 1938, University of Kansas
Thesis: A five-year study of the accidents on the St. Louis Board of Education playgrounds.
- FRED WILLIAM DOEPKE, Wichita, B.S.Educ. 1931, Kansas State Teachers College of Emporia
Thesis: Commercial education in Kansas high schools, 1934-1935 and 1937-1938.
- DENE R. EDGERTON, Kansas City, B.S.Educ. 1932, Kansas State Teachers College of Emporia
Thesis: A suggested county administrative unit for Wyandotte County, Kansas.
- EDWIN E. FINK, Lawrence, B.S.Educ. 1922, Fort Hays Kansas State College
Thesis: Bookkeeping in high school as preparation for accounting in college.
- EARL ROBERT FOSTER, Warrensburg, Missouri, B.S.Educ. 1926, Central Missouri State Teachers College
Thesis: Preparation and study of results of a true-false test in general college chemistry.
- KENNETH S. HILL, Turon, B.S.Educ. 1936, Kansas State Teachers College of Pittsburg
Thesis: A comparative study of the high schools of Reno County, Kansas, exclusive of Hutchinson High School, for school years 1937-38 and 1938-39.
- WILLIAM E. HODGES, Wichita, B.S.Educ. 1933, University of Kansas
Thesis: The extent to which arithmetic is used in the rural areas of central Kansas.
- WILLIAM HIRAM HOGUE, Ottawa, B.S.Educ. 1917, Kansas State Teachers College of Emporia
Thesis: Effect of modern practices in school promotion.
- IDA PAULINE JOHNSON, Emmett, B.S.Educ. 1934, Kansas State Teachers College of Emporia
Thesis: A study of two methods of teaching sophomore English.
- CLARENCE WILEY LYND, Arkansas City, B.S.Educ. 1931, Kansas State Teachers College of Pittsburg
Thesis: The operation of guidance programs and services in nine high schools in Kansas, 1938-39.
- GEORGE W. NUNN, Chillicothe, Missouri, B.S.Educ. 1938, Central Missouri State Teachers College
Thesis: A study of history tests used in high schools and colleges in eastern Kansas and western Missouri.
- CLIFFORD JOHN OLANDER, Kansas City, B.S.Educ. 1931, Kansas State Teachers College of Pittsburg
Thesis: Desired qualifications and tenure of coaches in Kansas high schools.
- HELEN ELIZABETH SHAW, Lawrence, B.S.Educ. 1925, University of Kansas
Thesis: Factors relating to reading success in primary grades.
- LAWRENCE ROBERT SIMPSON, Blue Mound, B.S.Educ. 1928, Baker University
Thesis: Developing citizenship in high school through student participation.

17

Master of Education

- HERBERT M. BENTLEY, Jr., Topeka, A.B. 1925, Sterling College
- ALBERT L. CROSS, Merriam, A.B. 1921, Baker University
- JESSE MONROE DREW, Kansas City, B.S. 1929, Lincoln University
- CARL FLIPPER, Jr., Columbia, South Carolina, A.B. 1936, Washburn College
- RACHEL KATHERINE GARD, Iola, A.B. 1929, University of Kansas
- URSULA CHRISTINE HENLEY, Lawrence, B.S.Educ. 1932, University of Kansas
- LOUISA HOTZ, Brookville, B.S.Educ. 1931, Fort Hays Kansas State College
- GERTRUDE STOELZING, Minneapolis, B.S.Educ. 1934, Kansas State Teachers College of Emporia
- VIVIAN NAOMI STRANGE, Perry, A.B. 1921, University of Kansas
- LESTER GEORGE WOOD, Kansas City, Missouri, B.S.Educ. 1929, Central Missouri State Teachers College

10

Master of Business Administration

- TOM HANCOCK, Lawrence, B.S.Bus. 1936, University of Kansas
Thesis: The collegiate business trainee.
- JOHN C. HOCEVAR, Jr., Girard, B.S.Bus. 1939, University of Kansas
Thesis: Group hospitalization insurance in the United States.
- FRANK HUBERT ROBERTS, Larned, B.S.Bus. 1938, University of Kansas
Thesis: Income phases of capital stock dividends and rights.

3

Chemical Engineer

- LLOYD FENTON CHRISTIANSON, Bartlesville, Oklahoma, B.S.Ch.E. 1935, University of Kansas
Thesis: A study of desalting crude petroleum and the use of sand filters for the disposal of oil-field brines.
- TRUMAN M. GODFREY, Winchester, Massachusetts, B.S. 1913, University of Kansas
Thesis: Recent advances in the manufacture of hydrogenated shortening.

2

Civil Engineer

JOSEPH JACOBS, Seattle, Washington, B.C.E. 1889, University of Kansas
Thesis: Report on the questionnaire concerning various economic phases of our state highway problems, released on February 28, 1934, by the State Highway Commission of the state of Washington.

BEN L. WILLIAMSON, Lawrence, B.S.C.E. 1933, University of Kansas
Thesis: Investigation of the pollution of the Fox and East rivers and of Green Bay in the vicinity of the city of Green Bay in the state of Wisconsin.

2

Doctor of Philosophy

LLOYD L. BOUGHTON, Lawrence, B.S.Pharm. 1926, State University of Iowa; M.S. 1932, University of Kansas
Thesis: The effects of life cycle therapeutic dosage administration of drugs to albino rats. *Physiology*

DONALD EDMUND FLETCHER, Little Rock, Arkansas, A.B. 1931, A.M. 1932, University of Kansas
Thesis: The influence of color and form vision upon the progress of medical students in microscopic anatomy. *Anatomy*

CLAUDE HAROLD BROWN, Lawrence, B.S. 1931, M.S. 1934, Kansas State Teachers College of Pittsburg
Thesis: The conflict between the theoretical and the practical in mathematics and mathematics teaching. *Education*

E. THAYER GASTON, Lawrence, A.B. 1923, B.M. 1937, Sterling College; A.M. 1938, University of Kansas
Thesis: A study of the trends of attitudes toward music in school children with a study of the methods used by high school students in sight-reading music. *Education*

LEWIS L. CORIELL, Lawrence, Bacteriology, A.B. 1934, State University of Montana; A.M. 1936, University of Kansas
Thesis: Studies on natural immunity in the cat. *Bacteriology*

ELZA O. HOLMES, Jr., Coldwater, A.B. 1933, Southwestern College; A.M. 1936, University of Kansas
Thesis: Studies of liquid junction potentials: I. Liquid junction potential studies in aqueous solutions of the chlorides of sodium, cadmium, and calcium; II. Activity coefficients and ionic transference numbers in aqueous cadmium chloride solutions. *Chemistry*

MARY FEE, Lawrence, B.S.Educ. 1930, M.S. Educ. 1932, University of Kansas
Thesis: Functional grammar and its relation to correct English usage. *Education*

AMOS L. LINGARD, Princeton, B.S. 1935, Ottawa University; A.M. 1937, University of Kansas
Thesis: A study of mercury-oil emulsions. *Chemistry*

8-133-1274

The University this year is graduating the largest class in its history, granting a total of 1274 degrees and certificates to approximately 1200 different persons. In addition to Kansas, 28 other states and the Philippine Islands are represented in this year's graduating class.



ACADEMIC HONORS and AWARDS

HONORS STUDENTS

- GORDON WORTH O'BRIEN of Russell, a senior in the College, *General Honors and Honors in English*.
MARION B. HORN, of Rocky River, Ohio, a senior in the College, *Honors in Sociology*.
EDNA MAE PARKS, of Kansas City, Missouri, a senior in the College, *Honors in Sociology*.
ISABEL RICE of Wathena, a senior in the College, *Honors in English*.
IRVING KURANER of Leavenworth, a senior in the College, *Honors in Political Science*.
RICHARD D. MACCANN of Wichita, a senior in the College, *Honors in Political Science*.
IRA O. SCOTT, JR., of Garden City, a senior in the College, *Honors in Political Science*.
RUTH M. WARREN of Lawrence, a senior in the College, *Honors in Political Science*.
MAC WYNNE of Hays, a senior in the College, *Honors in Political Science*.

FELLOWSHIPS AND SCHOLARSHIPS AT OTHER INSTITUTIONS

The following graduates of the University of Kansas have received fellowships at other institutions for the year 1940-1941:

- KATHARINE O. ASTON, Lawrence, A.B. 1937, University of Kansas, Fellowship in German at *Bryn Mawr College*.
RICHARD H. BOYCE, Kansas City, A.B. 1940, University of Kansas, Tuition and Room Scholarship in Journalism at the *State University of Iowa*.
EUGENE EARLE BUCHANAN, Chanute, A.B., LL.B. 1940, University of Kansas, University Fellowship in Law at *Columbia University*.
ELIJAH C. COLE, Lawrence, A.B. 1940, University of Kansas, Research Fellowship in Public Administration at the *University of Minnesota*.
JEAN ANNE CRAWFORD, Lawrence, A.B. 1940, University of Kansas, Scholarship in Economics at the *Fletcher School of Law and Diplomacy*.
MATTIE ESTELLA CRUMRINE, Lawrence, A.B. 1924, A.M. 1926, University of Kansas, University Scholarship in French at *Yale University*.
MARION BARTLETT HORN, Rocky River, Ohio, A.B. 1940, University of Kansas, Scholarship in Social Work at the *University of Nebraska*.
IRVING KURANER, Leavenworth, A.B. 1940, University of Kansas, Scholarship in Law at *Columbia University*.
JOHN V. LINTNER, Wichita, A.B. 1939, University of Kansas, University Fellowship in Economics at *Harvard University*.
RICHARD DYER MACCANN, Wichita, A.B. 1940, University of Kansas, Graduate Scholarship in Political Science at *Stanford University*.
ROBERT LOUIS MARIETTA, Salina, A.B. 1940, University of Kansas, Graduate Scholarship in Public Administration at *Syracuse University*.
DUNBAR SIMS McLAURIN, Langston, Oklahoma, A.B. 1937, Southwestern College, A.M. 1938, University of Kansas, Fellowship in Economics at the *University of Illinois*.
CARL ALBERT MORITZ, Marysville, A.B. 1940, University of Kansas, Graduate Residence Scholarship in Geology at *Columbia University*.
MARIE HELEN NORTON, Kansas City, A.B. 1940, University of Kansas, Two-year Fellowship in Psychiatric Social Work at *Smith College*.
JOHN DAVID RAMSEY, Kansas City, Mo., A.B. 1940, University of Kansas, Scholarship in Law at *Harvard University*.

- JAMES W. SPRAGUE, Lawrence, A.B. 1938, A.M. 1940, University of Kansas, Jeffries Wyman Scholarship in Biology at *Harvard University*.
RICHARD HARLAN STARK, Topeka, A.B. 1938, University of Kansas, University Fellowship in Mathematics at *Northwestern University*.
DONALD WAYNE TAYLOR, Topeka, A.B. 1939, Baker University; A.M. 1940, University of Kansas, University Fellowship in Psychology at *Harvard University*.
WILLIAM JAMES TRUXAL, Great Bend, A.B. 1940, University of Kansas, University Scholarship in German at *Ohio State University*.
MAC WYNNE, Hays, A.B. 1940, University of Kansas, Graduate Scholarship in Political Science at *Stanford University*.

FELLOWSHIPS AND SCHOLARSHIPS AT THE UNIVERSITY OF KANSAS

Appointments to Fellowships and Scholarships in the Graduate School for the year 1940-1941 have been announced as follows:

University Fellowships

- WILLIAM DEWITT FIELD, Lawrence, A.B. 1936, A.M. 1938, University of Kansas, *Entomology*.
DAVID FORD MCFARLAND, JR., State College, Pennsylvania, A.B. 1938, A.M. 1940, Pennsylvania State College, *History*.
JOHN DAVIS NAFF, Atlanta, Georgia, A.B. 1939, A.M. 1940, University of Alabama, *Geology*.

University Scholarships

- LOIS GERALDINE ALDOUS, Manhattan, B.S. 1940, Kansas State College, *History*.
WILLIAM THOMAS BELT, Kansas City, Missouri, A.B. 1939, University of Kansas, *Spanish*.
GEORGE K. HAUPTFUEHRER, Wichita, A.B. 1937, B.M. 1940, Friends University, *Music*.
MARJORIE GRACE HOUSTON, Kansas City, A.B. 1938, University of Kansas, *English*.
JEAN LOUISE LAMBERT, Hutchinson, A.B. 1940, Friends University, *Chemistry*.
REECE IVAN SAILER, Roseville, Illinois, A.B. 1938, University of Kansas, *Entomology*.
IRA O. SCOTT, JR., Garden City, A.B. 1940, University of Kansas, *Political Science*.
HARRIET STEPHENS, Topeka, A.B. 1940, University of Kansas, *English*.
STEPHEN L. STOVER, McPherson, A.B. 1940, McPherson College, *History*.
DOROTHYDEAN VIETS, Lawrence, A.B. 1940, University of Kansas, *Entomology*.

The Edwin Emery Slosson Scholarship in Science

- WELLESLEY JAMISON DODDS, Faulkton, South Dakota, B.S. 1938, South Dakota State College, *Physics*.

The Selden Lincoln Whitcomb Fellowship in Comparative Literature

- GORDON WORTH O'BRIEN, Russell, A.B. 1940, University of Kansas, *English*.

Summerfield Scholarships

- Summerfield Scholarships for a freshman group for the academic year 1940-1941 have been awarded to: WILLIAM BROWNLEE, Hutchinson; WALKER BUTIN, Chanute; NORMAND BUTTS, Hutchinson; CLARENCE ENGLE, Topeka; CARL R. HINES, Wichita; RALPH MICHNER, Wichita; MANSFIELD MILLER,

Onaga; RICHARD MILLER, Hutchinson; THORNTON McCLANAHAN, Lawrence; ROBERT McCONNELL, Wichita; ARTHUR NELSON, Lawrence; G. WILLIAM PORTER, Wichita; CLIFFORD REYNOLDS, Lawrence; THEODORE YOUNG, Oxford.

Competitive Scholarships for Women

The following Scholarships for freshman women have been awarded for 1940-1941: *The W.S.G.A. Honor Scholarship* to DONNA JEAN STEMBER of Ozawkie; *The Donnelly Honor Scholarships* to: KATHLEEN CARROLL of Mulvane; BARBARA JOYCE DUREE of Dodge City; VIRGINIA MABEL HEDGES of Wichita; JOY MAY MILLER of Wichita; MARY CHARLOTTE ROBSON of Waverly; and MAXINE PHYLLIS WARD of Wichita; *The Sadie A. Lawson Honor Scholarship* to FRANCES BLAIR of Dillon; *The Otto Springer Honor Scholarship* to FRANCES MARY DOUTZOUR of Wichita.

Scholarships in Residence Halls

The Holders of Miller Hall Scholarships for the Year 1939-1940 were as follows: MARY MARGARET ANDERSON, Minneapolis; PATRICIA BOWMAN, Topeka; MARY CRANMER, Conway Springs; MARY R. GANS, New Cambria; MARGARET JUNE GRAY, Pratt; BETTY JEAN HEISER, Anthony; ELENORA DORA HILST, Preston; LAURA LOUISE HOLSTE, Ludell; HELEN ELIZABETH HOUSTON, Kansas City; GLADYS HUBER, Valley Falls; BETTY KIMBLE, Mulvane; MARY MADGE KIRBY, Stilwell; IVA JEANNE KNIGHT, Chapman; VIOLA MAY KNOCHE, Paola; FREDA LOUISE LAWSON, McPherson; ETTA LEONARD, Topeka; MARY E. JANES, Eureka; HELEN E. MARTIN, Paola; VERLEEN MILLER, Hutchinson; RUTH MORITZ, Marysville; SARAI MOHLER, Topeka; IRENE NEIS, Wellsville; EVELYN NIELSON, Monument; EUNICE NIELSON, Atchison; ESTHER MARGUERITE NORMAN, Edwardsville; COLLEEN POORMAN, Wichita; BARBARA A. REBER, Kansas City, Mo.; LOUISE IRENE ROSS, Dover; MARY SCHULTES, Leavenworth; JEANNE SCOTT, Topeka; DORIS SHOLANDER, Topeka; BARBARA SMITH, Waverly; RUTH SPENCER, Russell; STANET STOLTENBERG, Holyfood; MARY ESTHER TIPPIN, Topeka; LOUISE TROUTWEIN, Topeka; BETTY JANE THOMAN, Kansas City; ALICE TIMPE, Easton; DOROTHY MAY WIGGINS, Ellsworth; KATHRYN MARIE ZENOR, Hutchinson.

The Holders of Watkins Hall Scholarships for the Year 1939-1940 were as follows: LEORA ADAMS, Clay Center; JOAN BRADLEY, Greensburg; ROSE ETTA CARR, Osawatomie; ELIZABETH VIRGINIA CURRY, Wichita; ADDIE MAY EGBERT, Topeka; BARBARA EDMONDS, Kansas City; HERTA EICHTERSHEIMER, Newark, N.J.; KATHERINE EBERHARDT, Kansas City; ROSELYN FELTON, Kansas City; LILLIAN FISHER, Leavenworth; MARY ALICE FLYN, Kansas City; JANICE GARTRELL, Beagle; MARY GREEN, Carbondale; VIRGINIA GSELL, Olathe; GENEVIEVE JANE HARMAN, Tonganoxie; DOROTHY LOUISE HENDRIKSON, Atchison; MARIAN B. HORN, Rocky River, Ohio; MARY JEAN HULL, Wichita; MURIEL HELEN JOHNSTON, Topeka; EVELYN MARIE KAMPRATH, Leavenworth; BETH KIRBY, Muncie; ESTHER KNOCHE, Paola; RUTH KNOCHE, Paola; MARGERY LEWIS, Atwood; BERNICE E. MALM, Silver Lake; JOHANNA CORRINE MARTIN, Paola; MARY FRANCES McANAW, Excelsior Springs, Mo.; RUTH L. MERCER, Wellington; VERDA LEE MILLER, Bethel; MARCIA MOLBY, Salina; IMOGENE MORRIS, Moline; MARY ELLEN ROACH, Lowmont; VIRGINIA MAUDE ROSE, Paola; RUTH MARGARET WARREN, Lawrence; NADINE ETHEL SCHUERMAN, Enid, Okla.; JOYCE STANDIFERD, Salina; EILEEN SMITH, Moline; BETTY THORN, Parsons; HELEN E. WILSON, Mulvane.

The Holders of The Men's Residence Halls Scholarships for the Year 1940-1941 are as follows: ROBERT AKEY, Pittsburg; JOHN J. ANDERSON, Minneapolis; RALPH ANDERSON, Pratt; JAMES M. ARNOLD, Downs; VAL JEAN ASHBY, Topeka; DONALD ATCHISON, Carbondale; BOB BAKER, Valley Center; RICHARD BEAHM, Bison; OLIVER J. BAEKE, Clay Center; ELDEN L. BEEBE, Bucklin; ARTHUR BENNER, Leavenworth; ROBERT E. BERGIN, Bogue; DAVID R. BOYLAN, Kansas City, Kans.; RICHARD BURGE, Kansas City, Kans.; LESLIE BUTTERFIELD, Iola; DONALD CAYLOR, Horton; ROBERT COLLETT, Wellington; HARLAN COPE, Greensburg; ROBERT COLEMAN, Junction City; JOHN M. DAVIS, Topeka; WILBUR DeHART, St. Joseph, Mo.; DALTON EASH, Anthony; DALE EWING, Lyons; WILLIAM

FALSTROM, Bethel; MAC FLOYD FREDERICK, Sterling; ROBERT GIBBON, Howard; C. A. GILMORE, Neodesha; WILLIAM GILSTRAP, Topeka; WILMER GOERING, McPherson; CURVIN GREEN, Kansas City, Mo.; CHARLES GUDGER, Osawatomie; NORRIS HAIGHT, Paola; TOM HANEY, Partridge; VELORIES HARLAN, Eureka; TOM HARRIS, Abilene; JAMES HAUPTLI, Downs; HENRY HILDEBRAND, Fowler; JOHN HYNDMAN, Wellington; NEAL JACOBS, Atchison; CLAUDE JOHNSON, Leavenworth; KENNETH JOHNSON, Kansas City, Mo.; LeROY JOHNSON, Marysville; LLOYD M. JONES, Osage City; PAUL JUELFS, McPherson; RALPH KARST, Hill City; GROVER R. KELLER, Neal; JOSEPH Q. KELLER, Neal; JACK L. KENDALL, Wichita; FRANCIS KLEE, McCracken; ROBERT KLOEPPER, Lancaster; JOHN KREAMER, Downs; DALE LAMPING, Seneca; WILLIAM LEADER, Leoti; DALE LEMON, Parker; WENDELL H. LINK, Emporia; LYLE LITTON, Stockton; LYNN LITTON, Stockton; LOWEN, WARREN, Ottawa; WILLIAM MACKIE, Wadsworth; EUGENE MANAHAN, Wellington; RICHARD MANKIN, Kansas City, Kansas; RUSSEL MILLS, Paola; WILEY MITCHELL, Valley Falls; ROLAND MORGAN, Dwight; C. H. MULLEN, Marion; DEWEY NEMAC, Agenda; HERMAN NEWMAN, Valley Falls; RAY NORTH, Kansas City, Mo.; DWAYNE OGLESBY, Cullison; GEORGE OMER, Oakley; WORTH PAYTON, Arkansas City; BEN PETREE, St. Joseph, Mo.; JOE PFAFF, Strawn; ROGER A. PRIOR, Emporia; JACK RAMSEY, Kansas City, Kans.; CHARLES READ, Leavenworth; WILLIAM REARDON, Kanopolis; GLESSNER REIMER, Kansas City, Mo.; CHARLES ROHLER, Ellis; DAVID D. ROSEN, Topeka; ELLVIN SANDELL, McPherson; THOMAS SCHAMAUN, Dighton; PAUL SCHAUER, Louisburg; J. W. SEUSER, LaCrosse; GLEN R. SEWELL, Sabetha; JAMES SHIMBERG, Leavenworth; LEONARD SMITH, Larned; GLENN ST. AUBYN, Russell; JOHN C. STERRETT, Topeka; WILLIAM STOWELL, Hays; FRED STULTS, Kansas City, Kans.; ROBERT TALMADGE, Kansas City, Kans.; FRANKLIN TAYLOR, Hutchinson; RICHARD TAYLOR, Norton; CHARLES TODD, Topeka; WENDELL TOMPKINS, Council Grove; WILLIS TOMPKINS, Council Grove; MILTON TRUAX, Cimarron; FRANK VRATIL, Larned; JOHN T. WAGGONER, Wagoner, Okla.; CHARLES WEBER, Neodesha; BILLY WEGMAN, Conway; ROBERT WHITE, Norton; CLAUDE WHITE, Wichita; JOE WIELAND, Norton; PAUL WISE, Topeka; ROBERT WITT, Hays; JOHN WOELK JR., Russell; WILLIAM WOOLSTON, Atchison; GEORGE WORRAL, Kansas City, Kans.; MAX LEE WYMORE, Topeka; MARVIN ZOSCHKE, Junction City.

Other Gift Scholarships

- A.A.U.W. (Lawrence Branch) Scholarship to MABEL YEATON, of Lawrence, a junior in the College.
- A.A.U.W. (Lawrence Branch) Scholarship to MAURICE ABELE of Lawrence, a senior graduating this year from the Liberty Memorial High School.
- The Arthur Jerome Boynton Memorial Scholarship* to JAMES MEREDITH of Wichita, a junior in the College.
- The Lathrop Bullene Memorial Scholarship* to DOROTHY WEIDMANN of Kansas City, a junior in the College.
- The Frances Schlegel Carruth Scholarship* to the graduate of the Lawrence Memorial High School passing the best examination in two-year entrance German at the University to THORNTON McCLANAHAN.
- The Christmas Vesper Scholarship Fund in Art* to VICTOR KALIN of Belleville, a sophomore in the School of Fine Arts; HAROLD BURNS of Raymond, a sophomore in the School of Fine Arts; GAIL LOCKWOOD of Liberal, a junior in the School of Fine Arts; ROSE MARIE RICHARDSON of Lawrence, a sophomore in the School of Fine Arts; JOHN SHERMAN of Neodesha, a freshman in the School of Fine Arts; and DOROTHY WIGGINS of Ellsworth, a freshman in the School of Fine Arts.
- The Christmas Vesper Scholarship Fund in Music* to ALFRED GALLUP of Lawrence, a freshman in the School of Fine Arts; LORENZO FULLER of Stockton, a senior in the School of Fine Arts; MARJIE HORNER of Topeka, a freshman in the School of Fine Arts; SARAI MOHLER of Topeka, a junior in the School of Fine Arts; JAMES QUY of Ft. Scott, a sophomore in the School of Fine Arts; LOREN WITHERS of Monett, Missouri, a junior in the School of Fine Arts; and MARVIN ZOSCHKE of Junction City, a high school senior.
- The Class of 1913 (25th Anniversary) Scholarship* to MARY AGNES

GABERDIEL of Hutchinson, a senior in the School of Education.

The Donnelly Scholarships for 1939-1940 to: DAN MERRIOTT, JUNE DRAPER, MINERVA DAVIS, WINIFRED HILL, EILEEN MARTIN, all of Lawrence, and NADINE HUNT of Herington.

The Charles S. Griffin Memorial Scholarship to ROBERT E. TREKELL of Wellington, a junior in the College.

The Herbert Spencer Hadley Memorial Scholarship to CYRUS RICKETTS, a second year Law student, of Paola.

The Aldie Haver Scholarship to MOYNE W. LICHLYTER of Eldorado, a senior in the College and freshman in the School of Medicine.

The Marcella Howland Memorial Scholarship to ESTHER FAYE ANDERSON of Richland, a junior in the College; O'THENE HUFF of Mulvane, a junior in the College; ELEANOR SWAN of Erie, a junior in the College; ILENE WAGNER of Concordia, a junior in the College and MARJORIE M. WILEY of Lawrence, a junior in the College.

The Ida M. Hyde Scholarship to DOROTHY JEAN VIETS, Lawrence, A.B. 1940, University of Kansas, Entomology.

The Eliza Matheson Innes Memorial Scholarship to ROSEMARY F. JONES of Tonkawa, Oklahoma, a junior in the College.

The George Innes Memorial Scholarship to DORIS K. WINZER of Douglass, a junior in the College.

The George Innes Music Scholarship to JESSE JUNE COCHREN of Whiting, a sophomore in the School of Fine Arts; and BETTY BUCHANAN of Lawrence, a sophomore in the School of Fine Arts.

The Hulda Ise Memorial Scholarship to HELEN ARDIS HOLLABAUGH of Overbrook, a junior in the School of Business.

Modern Book Club Scholarship for 1939-1940 to JOHN P. URICH, of Lawrence, a senior in the College.

The Eliza Parry Memorial Scholarship to CATHERINE COOPER of Garden City, a junior in the School of Fine Arts; JEANNE SCOTT of Topeka, a freshman in the School of Fine Arts; EVA TEAGARDEN of Phillipsburg, a junior in the School of Fine Arts; and JOE VAN SICKLE of Ottawa, a junior in the School of Fine Arts.

The Porter Scholarship in the School of Medicine to MARJORIE M. PYLE of Manhattan.

The Stephenson Scholarship to MARGARET FULTZ of Osawatomie, a freshman in the School of Fine Arts; ROBERT GLOTZBACH of Wamego, a senior in the School of Business; EUGENE NININGER of McPherson, a sophomore in the School of Fine Arts; and WILLIAM WARD of Norton, a senior in the School of Fine Arts.

The Luella F. Stewart Music Scholarship to MARSHALL BUTLER of Hopkinsville, Kentucky, a sophomore in the School of Fine Arts; and CATHERINE RUTH GIBSON of Storm Lake, Iowa, a junior in the School of Fine Arts.

The Luella F. Stewart Art Scholarship to ELDEN TEFFT of Lawrence, a freshman in the School of Fine Arts; and CHARLOTTE STEEL of Bartlesville, Oklahoma, a junior in the School of Fine Arts.

The Harry C. Thurnau Scholarship to ELON L. HILLER of Hutchinson, a senior in the College.

Torch chapter of Mortar Board Scholarship to FRED A. LEE RUNDLELL of Norton, a senior in the School of Business.

The University Women's Club Scholarship to MINTA MARY McDONALD of Eureka, a 2nd year Law student.

The Edna Osborne Whitcomb Scholarship in Creative Writing for 1939-1940 to JANE RAUP ROBISON of Timken, a junior in the College, and LAURA LOUISE HOLSTE of Ludell, a junior in the College; same award for 1940-1941 to JANE RAUP ROBISON of Timken, a junior in the College and SIGRID ELAINE STEEPER of Kansas City, Missouri, a sophomore in the College.

The Caroline Mumford Winston Memorial Scholarship to VIRGINIA BELL of Lawrence, a junior in the School of Education.

W.S.G.A. Scholarship to BETTY JEANNE BOURASSA of Topeka, a freshman in the College.

Loan Scholarships

American Bankers Association Loan Scholarship to KERMIT STIRTZ LORENZ of Topeka, a junior in the School of Business.

The Lucinda Smith Buchan Loan Scholarship for 1939-1940 to EDNA MAY PARKS of Kansas City, Missouri, a senior in the College.

Class of 1911 Loan Scholarship for 1939-1940 to THOMAS J. LEVELL of Kansas City, a senior in the School of Engineering and Architecture.

The Class of 1932 Memorial Loan Scholarship to WALLACE DOOLEY of Kansas City, a senior in the College.

The Class of 1932 Loan Scholarship for 1939-1940 to MISS VIRGINIA RIZZO of Lawrence, a junior in the College.

The D.A.R. (Betty Washington Chapter) Loan Scholarship to MARGARET OGDEN of Eudora, a junior in the College and GRACE E. SCHROETTER of Silver Lake, a junior in the College.

The Eldorado Pan-Hellenic Loan Scholarship for 1939-1940 to MRS. JOSEPHINE SAMS of Salina, a student in the Graduate School.

The Friends in Council Scholarship to ROWLAND RAUP of Timken, a junior in the College.

The Ingleside Club Loan Scholarship for 1939-1940 to MARY KATHERINE MORROW of Oskaloosa, a junior in the College.

The Kansas City Alumni Loan Scholarship for 1939-1940 to ROBERT A. BRADLEY of Atchison, a senior in the College and PHIL J. ANTRIM of Spivey, a sophomore in the School of Medicine.

The Kansas Council of Teachers of Journalism Loan Scholarship to KENNETH JACKSON of Arma, Kansas, a sophomore in the College.

The Kappa Beta Loan Scholarship to LILLIAN M. TUTTLE of Coffeyville, a senior in the College.

Lucie March Memorial Scholarship to FRANCES ANN ALLEN of Newton, a freshman in the School of Medicine.

The J. C. NeuenSchwander Memorial Scholarship to PAUL S. WISE of Topeka, a sophomore in the College.

No Name Club Loan Scholarship for 1939-1940 to DOROTHY WEIDEMAN of Lawrence, a junior in the School of Business.

The Omicron Nu Scholarship to LENA SCHROEDER of Paola, a junior in the School of Education.

Pi Lambda Theta Loan Scholarship for 1939-1940 to CLEO JEANNE ROBERTSON of Moline, a senior in the College.

The Pi Lambda Theta Scholarship to RUTH YEOMANS of Lawrence, a senior in the School of Education.

The Lucille Brown Rankin Loan Scholarship in Design to DOROTHEA THOMPSON of Ft. Collins, Colorado, a freshman in the School of Fine Arts.

The David C. Rowlands Scholarship to LOUIS E. WEINBERG of Oskaloosa, a junior in the School of Fine Arts.

The Helen K. Stevens Memorial Scholarship (Chi Omega) to HELEN MAE PETERS of Cuba, a senior in the School of Education.

The Tennola Club Loan Scholarship for 1939-1940 to JOYCE CHAMPLIN of Long Island, a senior in the School of Business.

The Gertrude Bullene Weaver Memorial Scholarship to LLOYD ESTES of Eudora, a sophomore in the College.

Gertrude Bullene Weaver Loan Scholarship for 1939-1940 to HAROLD R. SELLS of Effingham, a senior in the School of Engineering and Architecture, ROWLAND S. RAUP of Timken, a junior in the College, and JACK N. MARTIN of Lawrence, a senior in the College.

W.S.G.A. Scholarship for 1939-1940 to MARY McDONALD of Eureka, a second year student in the School of Law.

W.S.G.A. Loan Scholarship for 1939-1940 to BETH M. HINKSON of Lawrence, a sophomore in the College.

PRIZES

Prizes have been awarded as follows to students of the University of Kansas in the academic year 1939-1940:

The University Honor Award for 1939 to the senior man whose influence on University student life was adjudged most wholesome and helpful, to PAUL WALTER MORITZ of Marysville, Kans.

Acting Award for excellence in acting to REOLA DURAND of Hoisington, a freshman in the College and LORENZO FULLER of Stockton, a senior in the School of Fine Arts.

- The *Alpha Chi Sigma Award* for outstanding achievement in chemistry and chemical engineering to DONALD D. DEFORD, of Alton, a senior in the College. Honorable mention in recognition of the outstanding work through their college careers to OTIS RAY McINTIRE of Gardner, a senior in the School of Engineering and Architecture and CHARLES WILES of Parsons, a senior in the School of Engineering and Architecture.
- The *Alpha Kappa Psi Medallion* to the ranking junior man in the School of Business to SAMUEL RICHARD HEPWORTH of Topeka.
- The *Alpha Rho Chi Medal* to the graduating senior in architecture for leadership, service and promise of real professional merit through his attitude and personality to CHARLES SAMUEL ASH JR. of Topeka, a senior in the School of Engineering and Architecture.
- The *American Institute of Architects Medal* for excellence in architectural work through the course to JOY SCAMMON of Rock Port, Missouri, a senior in the School of Engineering and Architecture.
- American Institute of Chemical Engineers National Problem Contest*, first honorable mention to OTIS RAY McINTIRE, a senior in the School of Engineering and Architecture from Gardner, Kans.
- The *Kansas State Section of the American Society of Civil Engineers Award* to the civil engineering graduate having the highest scholastic standing for four years, to DWIGHT F. METZLER of Carbondale, a senior in the School of Engineering and Architecture.
- The *Kansas City Section of the American Institute of Electrical Engineers Award* for the best student paper presented to BREWSTER POWERS of Kansas City, a senior in the School of Engineering and Architecture and second prize to DALE WHITAKER of Almena, a senior in the School of Engineering and Architecture and RICHARD B. SCOTT of Kansas City, Mo., a senior in the School of Engineering and Architecture.
- The *American Society of Mechanical Engineers Regional Award* to JAMES ALMARIN NOTTINGHAM of Lawrence, a senior in the School of Engineering and Architecture.
- The *American Pharmaceutical Association Membership Award* to PERSHING FREDERICK of Wilson, a senior in the School of Pharmacy.
- The *William Herbert Carruth Memorial Poetry Prizes*:
No first prize awarded.
Tied for second and third prizes: RICHARD MACCANN of Wichita, a senior in the College and MAYNARD FOX of Hays, a student in the Graduate School.
Honorable Mention to KIRK FARIS of Kansas City, Mo., a senior in the College and PEGGY SMITH of Olathe, a sophomore in the College.
- The *Carter Stationery Store Prize in Design* to DONALD FITZGERALD of Waterville, a sophomore in the School of Fine Arts.
- The *Carter Stationery Store Prize for Watercolor* to VIOLET RUTH LAMONT of Lawrence, a junior in the School of Fine Arts.
- The *Lambda Chapter of Chi Omega Prize* for the ranking woman in the department of economics in the College or School of Business to JEAN ANNE CRAWFORD of Lawrence, a senior in the College.
- The *Chittenden Prize* for excellence in Freshman Architectural subjects to GLESSNER WOODROW REIMER of Kansas City, Mo., a freshman in the School of Engineering and Architecture.
- The *Delta Sigma Pi Key* to the ranking man in the School of Business, to KEITH W. SCHUERMAN of Salina, a senior.
- The *Delta Sigma Rho medal* for excellency in debate to LEO W. RHODES of Wichita, a senior in the School of Business.
- Freshman Honor Key* awarded by Alpha of Delta Phi Delta for excellency of work to HOWARD BABCOCK of Wichita, a freshman in the School of Fine Arts.
- The *A. Morris Ginsberg Prize in Medicine* to the Junior student who has done the best work in the Department of Medicine to JAMES G. JANNEY of Dodge City.
- The *Honor Graduates of R.O.T.C.* for highest scholarship and proficiency in military training to DONALD D. DEFORD, Coast Artillery R.O.T.C. Unit, a senior in the College of Liberal Arts and Sciences; ROBERT L. MARIETTA, Coast Artillery R.O.T.C. Unit, a senior in the College of Liberal Arts and Sciences; ALEXANDER C. MITCHELL, Coast Artillery, R.O.T.C. Unit, a senior in the School of Engineering and Architecture; JAMES R. MITCHELL, Coast Artillery, R.O.T.C. Unit, a senior in the School of Business; VINCENT C. RETHMAN, Coast Artillery, R.O.T.C. Unit, a senior in the School of Engineering and Architecture; DANIEL R. HOPKINS, Infantry Unit, a senior in the School of Business; and LELYN M. YOUNG, Infantry Unit, a senior in the College of Liberal Arts and Sciences.
- Jordan Air and Suction Pump Company* first prize first semester to HOWARD BABCOCK of Wichita, a freshman in the School of Fine Arts and first prize second semester to LOUIS WEINBERG of Oskaloosa, a junior in the School of Fine Arts.
- The *Keeler Prize in Painting* to A. WELLINGTON TURNER of Lawrence, a junior in the School of Fine Arts.
- The *Lehn & Fink Gold Medal* for 1940 to DONALD L. CLUSTER of St. Joseph, Mo., a senior in the School of Pharmacy.
- The *Hattie Elizabeth Lewis Prize Essays in Applied Christianity*:
First Prize to FREEMAN W. MEYER of Wathena, for his essay on "Christian Pacificism".
Second Prize to DONALD W. TAYLOR of Topeka, for his essay on "Men of Tomorrow".
Third Prize to JEAN ANNE CRAWFORD of Lawrence for her essay on "Christianity, the Rationale of Democracy."
- The *Midwestern Druggist Awards* to PERSHING FREDERICK of Wilson; BERNARD WALBURN of Salina; ALF OLESON of Belle Plaine; DOROTHY JANE ADAIR of Topeka and BETTY BLACKBURN of Madison, seniors in the School of Pharmacy.
- Onondaga Pottery, Syracuse, New York.* Designs for institutional china accepted for purchase to: RUTH ALVORD of Lawrence, a sophomore in the School of Fine Arts; MICHAEL ANDREWS of Central City, Penn., a junior in the School of Fine Arts; ALICE LOUISE BROWN of Kansas City, a sophomore in the School of Fine Arts; HELEN CADY of Lawrence, a senior in the School of Fine Arts; BEULAH GRUNWALD of St. Joseph, Mo., a senior in the School of Fine Arts; HELEN FINCKE of Kansas City, a senior in the School of Fine Arts; DON FITZGERALD of Waterville, a sophomore in the School of Fine Arts; JUSTINE HOPPER of Kansas City, Mo., a senior in the School of Fine Arts; GERTRUDE KAUFMAN of Kansas City, Missouri, a senior in the School of Fine Arts; RENE KISKADEN of Wichita, a sophomore in the School of Fine Arts; JANE KREHBIEL of Kansas City, Missouri, a senior in the School of Fine Arts; ANN MURRAY of Lawrence, a sophomore in the School of Fine Arts; JEANNE SUNDERLAND of Kansas City, Missouri, a sophomore in the School of Fine Arts; WELLINGTON TURNER of Lawrence, a junior in the School of Fine Arts; FRANCES YORK of Baldwin, a junior in the School of Fine Arts.
- The *Penfold Prizes in Photography* to RUTH SPENCER of Russell, a junior in the College and LELYN YOUNG of Leavenworth, a senior in the College.
- The *Phi Chi Theta Scholarship Key* to the woman in the School of Business ranking highest in scholarship activities and leadership, to LUCY RUNDELL of Norton, a senior.
- The *Rowlands Book Store Prize in Design* to CHARLES WRIGHT of Topeka, a sophomore in the School of Fine Arts.
- The *Rowland Prize for Antique Drawing* to HOWARD BABCOCK of Wichita, a freshman in the School of Fine Arts.
- The *Scarab Medal* for excellence in Sophomore Architectural design to LYMAN ENNIS of Kansas City, Mo., a sophomore in the School of Engineering and Architecture.
- The *Henry Schott Memorial Prizes in Journalism* to GEORGE W. FEY of Marion, a junior in the College and ROSCOE BORN of Osage City, a junior in the College.
- The *Sigma Delta Chi National Scholarship Awards in Journalism* to RICHARD BOYCE of Kansas City a senior in the College; to HARRY HILL of Lawrence, a senior in the College; to MARY ELIZABETH KIRSCH of Paragould, Arkansas, a senior in the College; to MARILYN McBRIDE of Wichita, a senior in the College and to UARDA SHERRY of Burlingame, a senior in the College.
- The *Sigma Tau Scholarship Medal* to the Sophomore in the School of Engineering and Architecture having highest freshman scholastic standing to ARTHUR WAHL of Saxman, a sophomore in the School of Engineering and Architecture and ALBERT J. WIELAND of Norton, a sophomore in the School of Engineering and Architecture.

The Thayer Medal for excellence in architectural design to RICHARD A. GOOD of Iola, a senior in the School of Engineering and Architecture.
The Vernon's Hardware Store Prize in Design to BARBARA SMITH of Waverly, a junior in the School of Fine Arts.

INTERNESHIPS

Interneships for members of the graduating class of the School of Medicine have been awarded as follows:

ARTHUR ADELMAN, Mount Sinai Hospital, Cleveland, Ohio.
GLENN HARRIS BAIRD, University of Kansas Hospitals, Kansas City, Kans.
JOHN R. BARNHILL, General Hospital of Fresno County, Fresno, Calif.
FRED D. BATY, Providence Hospital, Kansas City, Kans.
MONTI LOUIS BELOT, University of Kansas Hospitals, Kansas City, Kans.
LOUIS JOHN BONANNO, St. Joseph Hospital, Kansas City, Mo.
B. EARLE BRICKEY, Kansas City General Hospital, Kansas City, Mo.
VERNON P. BRICKEY, San Bernardino County Charity Hospital, San Bernardino, Calif.
THOMAS SHERMAN BROWNELL, St. Luke's Hospital, Cleveland, Ohio.
NORMAN A. BURKETT, Kansas City General Hospital, Kansas City, Mo.
HOWARD CURTIS BURKHEAD, Monmouth Memorial Hospital, Long Branch, N.J.
FRANK LAWRENCE BYNUM, John Sealy Hospital, Galveston, Texas.
ARTHUR SAMUEL CAIN, JR., Albany Hospital, Albany, N.Y.
GARLAND LEROY CAMPBELL, St. Louis City Hospital, St. Louis, Mo.
JAMES WILLIAM CAMPBELL, University of Kansas Hospitals, Kansas City, Kans.
CLAYTON WAYNE CLARK, City Hospital, Cleveland, Ohio.
GORDON CLARE COOK, Long Island College Hospital, Brooklyn, N.Y.
ALFRED GOSSETT DIETRICH, University of Kansas Hospitals, Kansas City, Kans.
RUTHERFORD SCOTT DUEMLER, Duval County Hospital, Jacksonville, Fla.
HAROLD L. DYER, State University & Crippled Children's Hospitals, Oklahoma City, Okla.
DEMERLE EMERY ECKART, Trinity Lutheran Hospital, Kansas City, Mo.
EUGENE KLASSEN ENNS, St. Joseph Hospital, Kansas City, Mo.
HELEN LEONE FINLEY, Norwegian Lutheran Deaconesses' Home & Hospital, Brooklyn, N.Y.
BERNARD BELIN GADWOOD, St. Vincent's Hospital, Los Angeles, Calif.
NORMAN ARTHUR GALITZKI, San Diego County General Hospital, San Diego, Calif.
GLEN HARLEY GARRETT, Broadlawns, Polk County Public Hospital, Des Moines, Iowa.
KARL BERNARD GONSER, St. John's Hospital, Tulsa, Okla.
WILLIAM HENRY GUTHRIE, Trinity Lutheran Hospital, Kansas City, Mo.
GLEN S. HARMAN, Santa Barbara General Hospital, Santa Barbara, Calif.
CHARLES FRANKLIN HENDERSON, Santa Barbara General Hospital, Santa Barbara, Calif.
ELMER A. HOF, Southern Pacific General Hospital, San Francisco, Calif.
JOHN ALLISON HOLMES, Hospital of Good Shepard, Syracuse, N.Y.
JOHN BENNETT JARROTT, State University & Crippled Children's Hospitals, Oklahoma City, Okla.
RALPH E. JORDAN, Trinity Lutheran Hospital, Kansas City, Mo.
PAUL R. LEFFLER, Lucas County General Hospital, Toledo, Ohio.
HERLAN ORVILLE LOYD, Broadlawns, Polk County Public Hospital, Des Moines, Iowa.
JOSEPH WARREN MANLEY, St. Margaret's Hospital, Kansas City, Kans.

RICHARD GORDON MEISBURGER, St. Luke's Hospital, Kansas City, Mo.
MORGAN L. MOLLOHAN, City Hospital, Akron, Ohio.
VICTOR REUBEN MOORMAN, Roper Hospital, Charleston, S. Carolina.
GEORGE LOREN NORRIS, Albany Hospital, Albany, N.Y.
MAX ENSIGN PFUETZE, St. Mary's Hospital, Duluth, Minn.
HAROLD E. POOLE, University of Kansas Hospitals, Kansas City, Kans.
MARJORIE McDONALD PYLE, University of Kansas Hospitals, Kansas City, Kans.
DAN O. RATZLOFF, University of Kansas Hospitals, Kansas City, Kans.
FORREST EUGENE RICHERT, Gorgas Hospital, Ancon, Canal Zone.
HARRY MARSHALL ROACH, Cincinnati General Hospital, Cincinnati, Ohio.
HAROLD A. ROSIER, University of Kansas Hospitals, Kansas City, Kans.
EDWARD A. SAMUELSON, St. Joseph Hospital, Kansas City, Mo.
AMBROSE BYRON SHIELDS, St. Vincent's Hospital, Portland, Oregon.
RONALD A. SIMPSON, State of Wisconsin General Hospital, Madison, Wisc.
CLARENCE HART STEELE, Kansas City General Hospital, Kansas City, Mo.
MARVIN OMAR STEFFEN, St. Margaret's Hospital, Kansas City, Kans.
HUGH STEPHENS, Santa Barbara Cottage Hospital, Santa Barbara, Calif.
RICHARD LEE SUTHERLAND, Albany Hospital, Albany, N.Y.
FRANK AUGUSTUS TABER, Deaconess Hospital, Spokane, Wash.
CHARLES D. TERRY, Nashville General Hospital, Nashville, Tenn.
DEAN JACK TILLER, Wesley Hospital, Wichita, Kan.
DONALD WARREN TODD, Broadlawns, Polk County General Hospital, Des Moines, Iowa.
NEWMAN V. TREGER, St. Luke's Hospital, Kansas City, Mo.
LESTER ELDEN ULREY, St. Mary's Hospital, Duluth, Minn.
RONALD C. VETTER, University of Kansas Hospitals, Kansas City, Kans.
LARRY E. VINZANT, City Hospital, Akron, Ohio.
JOHN DAVID WAY, King County Hospital, (Harborview), Seattle, Wash.
WILLIAM ELDON WENDEL, St. Margaret's Hospital, Kansas City, Kans.
CLAUDE SAMUEL WHITSON, Trinity Lutheran Hospital, Kansas City, Mo.
ROBERT BENJAMIN WILSON, Kansas City General Hospital, Kansas City, Mo.
WALTON CLAY WOODS, St. Margaret's Hospital, Kansas City, Kans.
ROBERT PAUL WRIGHT, St. Joseph Hospital, Kansas City, Mo.

RESIDENCIES

Residencies and appointments at the University of Kansas Hospitals for 1940-41 have been awarded as follows:

MAX S. ALLEN, Resident in Medicine.
RAYMOND ANDERSON, Resident in Pediatrics.
JAMES L. BEAVER, Resident in Surgery.
ROBERT J. BOODY, Assistant Resident in Medicine.
JOHN BOWSER, Resident in Roentgenology.
HARRY L. DOUGLAS, Assistant Resident in Medicine.
MERRILL W. ETZENHOUSER, Resident in Obstetrics.
GLENN FRANKLIN, Assistant Resident in Surgery.
GRETCHEN GUERNSEY, Resident in Anesthesia.
THOMAS M. JOHNSON, Assistant Resident in Surgery.
HENRY WALLACE LANE, Assistant Resident in Pathology.
FRED MILLS, Resident in Pathology.
ROBERT NEWMAN, Assistant Resident in Pathology.
RAYMOND L. PENDLETON, Assistant Resident in Obstetrics & Gynecology.
PAUL R. RANNIE, Assistant Resident in Anesthesia.
MELVIN RABE, Assistant Resident in Surgery.
JAMES A. REID, Assistant Resident in Out-patient Department.
JACK S. TUCKER, Resident in Gynecology.
JEAN W. WILLOUGHBY, Assistant Resident in Medicine.