

Sixty-Seventh
Annual Commencement
UNIVERSITY OF KANSAS
BACCALAUREATE
SERVICES



THE MEMORIAL STADIUM

SUNDAY, JUNE 11, 1939

7:30 O'CLOCK

Program

PROCESSIONAL, "Grand Commencement March"

..... Arranged by William Ward

UNIVERSITY OF KANSAS BAND

RUSSELL L. WILEY, Director

INVOCATION

THE REV. CHARLES W. THOMAS
Director of the Roger Williams Foundation

HYMN

Seymour

Softly now the light of day
Fades upon my sight away;
Free from care, from labor free,
Lord, I would commune with Thee.

Thou, whose all-pervading eye
Naught escapes, without, within,
Pardon each infirmity,
Open fault and secret sin.

Soon, for me, the light of day
Shall forever pass away:
Then, from sin and sorrow free,
Take me, Lord, to dwell with Thee.

Thou who, sinless, yet hast known
All of man's infirmity:
Then, from Thine eternal throne,
Jesus, look with pitying eye.

Amen.

SCRIPTURE READING

THE REV. C. J. KNOX
Minister to the Centenary Methodist Church

PRAYER

THE REV. THEODORE H. ASZMAN
Minister to the First Presbyterian Church

SONG, MAY OUR MOUTHS BE FILLED WITH THY PRAISE

..... *Rachmaninoff*

WESTMINSTER A CAPPELLA CHOIR
D. M. SWARTHOUT, *Director*

BACCALAUREATE SERMON, THE REV. J. HARRY COTTON
Minister to the Broad Street Presbyterian Church.
Columbus, Ohio

HYMN *Duke Street*

O God, beneath Thy guiding hand
Our exiled fathers cross'd the sea;
And when they trod the wintry strands,
With pray'r and psalm they worshipp'd Thee.

Thou heard'st, well pleased, the song, the prayer,
Thy blessing came; and still its power
Shall onward, through all ages, bear
The memory of that holy hour.

Laws, freedom, truth, and faith in God
Came with those exiles o'er the waves;
And where their pilgrim feet have trod,
The God they trusted guards their graves.

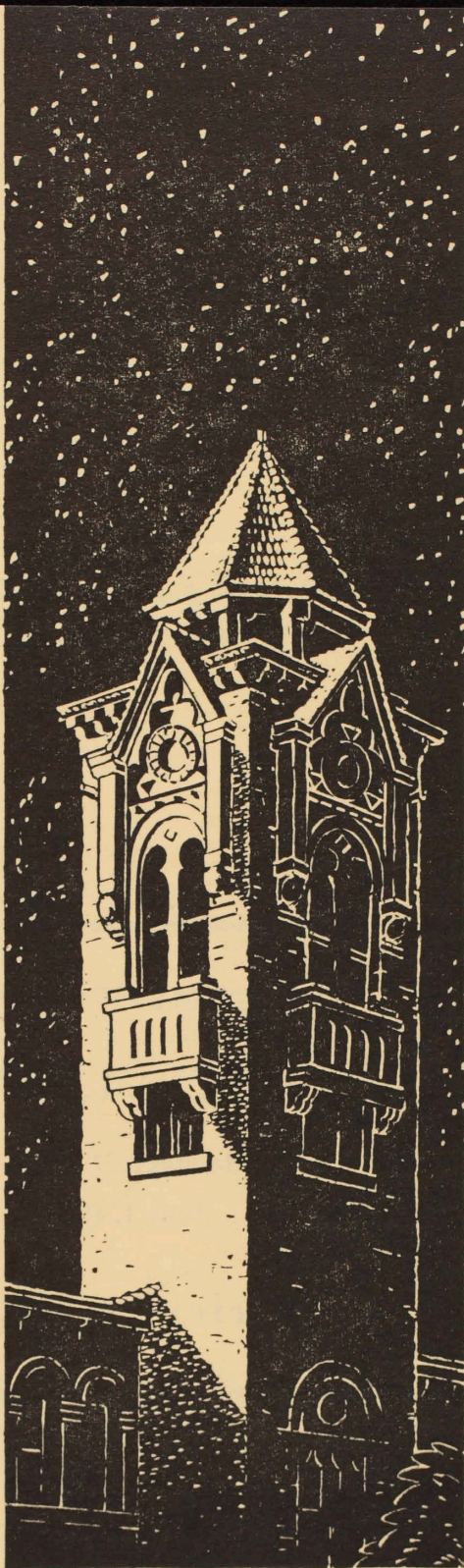
And here Thy name, O God of love,
Their children's children shall adore,
Till these eternal hills remove,
And spring adorns the earth no more.

Amen.

BENEDICTION THE REV. W. LAWSON BROWN
Minister to the Church of the Nazarene

RECESSIONAL, "GRAND MARCH, SKYLINER" *Alford*
THE UNIVERSITY BAND

SIXTY
SEVENTH
ANNUAL



Commencement

UNIVERSITY
OF KANSAS

JUNE TWELFTH • NINETEEN THIRTY NINE • SEVEN O'CLOCK

IN MEMORIAM

ELIZABETH M. WATKINS

January 21, 1861

June 1, 1939

A Friend of Youth

The Order of Exercises

PROCESSIONAL:

"Grand Commencement March" - - - - Arranged by William Ward
THE UNIVERSITY OF KANSAS BAND
RUSSELL L. WILEY, Director

INVOCATION: - - - - -

THE REV. JOSEPH M. KING
Minister to the Plymouth Congregational Church

ADDRESS:

"The Puritan As a Friend of Learning" - - - JAMES BRYANT CONANT
President of Harvard University

GREETINGS: - - - - -

THE HONORABLE PAYNE H. RATNER
Governor of the State of Kansas

GREETINGS: - - - - -

THE HONORABLE H. L. SNYDER
Member of the Board of Regents

CONFERRING OF DEGREES: - - - - -

CHANCELLOR E. H. LINDLEY

PRESENTATION OF DIPLOMAS: - - - - -

THE HONORABLE FRED M. HARRIS
Chairman of the Board of Regents

BENEDICTION: - - - - -

THE REV. JOHN BOWERS
Minister to the Trinity Episcopal Church

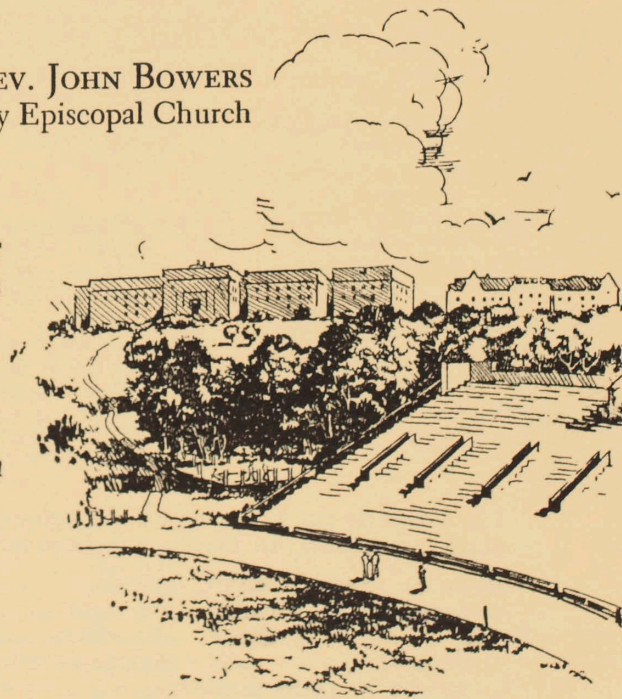
THE CRIMSON AND THE BLUE:

Led by DONALD M. SWARTHOUT
Dean of the School of Fine Arts

RECESSIONAL:

"Spanish March, Bravada"

- - - - - CRUZON
THE UNIVERSITY BAND



The Academic Procession

THE UNIVERSITY MARSHALS

THE CHANCELLOR AND THE SPEAKER

THE BOARD OF REGENTS

DEANS OF THE SEVERAL SCHOOLS

FACULTIES OF THE SCHOOLS

THE CANDIDATES FOR DEGREES

THE GRADUATE SCHOOL

THE SCHOOL OF MEDICINE

THE SCHOOL OF LAW

THE SCHOOL OF BUSINESS

THE SCHOOL OF EDUCATION

THE SCHOOL OF PHARMACY

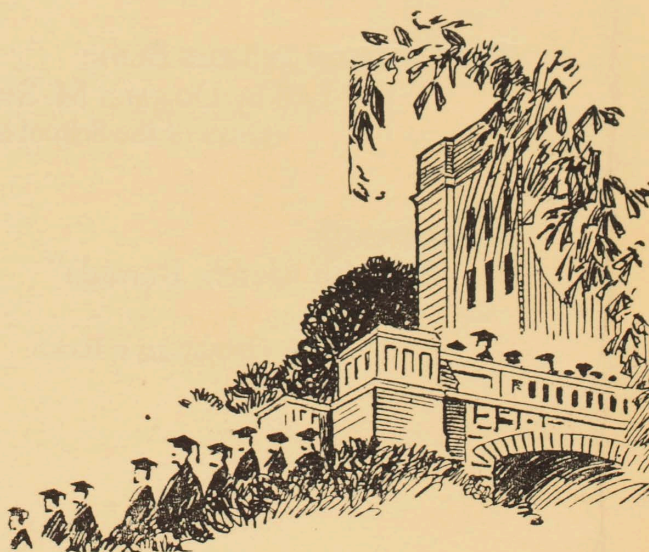
THE SCHOOL OF FINE ARTS

THE SCHOOL OF ENGINEERING AND ARCHITECTURE

THE COLLEGE OF LIBERAL ARTS AND SCIENCES

THE COLOR OF THE TASSEL ON THE ACADEMIC CAP DESIGNATES THE SCHOOL TO WHICH THE STUDENT BELONGS:

GRADUATE SCHOOL - BLACK	PHARMACY - - - - - OLIVE
MEDICINE - - - - - GREEN	FINE ARTS - - - - - BROWN
LAW - - - - - PURPLE	ENGINEERING AND
BUSINESS - - - - - DRAB	ARCHITECTURE - - ORANGE
EDUCATION - - LIGHT BLUE	COLLEGE - - - - - WHITE



CANDIDATES FOR DEGREES

COLLEGE OF LIBERAL ARTS

Presented by PAUL B. LAWSON, Dean

Bachelor of Arts

- | | | | |
|--|---|--|--|
| ✓ HAROLD E. ADDINGTON
Baldwin City <i>Journalism</i> | ✓ BARBARA JANE BOSWELL
Baxter Springs <i>Soc. Sci.</i> | ✓ BETTY LINDLEY COLE
Coffeyville <i>Econ</i> | ✓ RICHARD FLEESON
Sterling <i>Econ</i> |
| ✓ H. SMITH AINSWORTH
Lyons <i>Zoology</i> | ✓ PHILOMENE F. BOURASSA
Topeka <i>Span</i> | ✓ HUBERT P. COLEMAN
Elkhart <i>Geol.</i> | ✓ LOUIS R. FOCKE
LeRoy <i>Journ</i> |
| ✓ LOREN WESLEY AKERS
Centerville <i>Chem.</i> | ✓ JESSIE MARIE BRADBURY
Independence <i>French</i> | * ✓ IRA GILMAN COLLINS
Parker <i>Bact.</i> | ✓ FRANK SHANE FORMAN, Jr.
Kansas City, Mo. <i>Med.</i> |
| ✓ MILTON EDWARD AKERS
Coffeyville <i>English</i> | ✓ VICTOR C. BREEN
El Dorado <i>Law</i> | ✓ CLAIRE LOUISE CONNELLY
Caney <i>Social</i> | ✓ WILLIAM THATCHER FRAZIER
El Dorado <i>Geol.</i> |
| * ✓ HENRY ALDIS
Emporia <i>Zool.</i> | ✓ ELLEN BROWN
Lawrence <i>Psych.</i> | ✓ ESTHER KATHERINE COOPER
Kansas City <i>Span.</i> | ✓ LEROY B. FUGITT, Jr.
Hoisington <i>Geol.</i> |
| ✓ HAROLD EDWARD ALEXANDER
Lawrence <i>Zoology</i> | ✓ MORTON E. BROWNELL, Jr.
Wichita <i>Med.</i> | ✓ RUBY E. CRARY
Kansas City <i>Engl.</i> | |
| ✓ ALLEN HERBERT ANDERSON
Lawrence <i>Chemistry</i> | * ✓ EVELYN MARIE BRUBAKER
Grants Pass, Oregon <i>Social.</i> | * ✓ MARJORIE ALLEE CRUME
Fort Scott <i>Sp. + Dr. Art.</i> | |
| ✓ ROBERT LELAND ANDERSON
Emporia <i>Med.</i> | ✓ DALE W. BRUCE
Coffeyville <i>Law</i> | | * ✓ WILBUR EDWIN GABBERT
Clay Center <i>Zool.</i> |
| ✓ DAVID WALKER ANGEVINE
McPherson <i>Economics</i> | ✓ MALCOLM JAMES BRUMWELL
Leavenworth <i>Zool.</i> | ✓ ELIZABETH LOUISE DAILEY
Chillicothe, Mo. <i>Psych.</i> | ✓ MARGARET LOUISE GARRETT
Lawrence <i>Social.</i> |
| ✓ JOHN MANNEN ARTHUR, III
Kansas City <i>Zoology</i> | ✓ DOROTHY ELAINE BUBLITZ
Kansas City, Mo. <i>Math.</i> | ✓ CHARLES E. DALRYMPLE, Jr.
Lawrence <i>Social</i> | ✓ LUCILLE IRENE GAYNOR
DeSoto <i>Sp. + Dr. Art.</i> |
| * ✓ SAMUEL GLEN ASHLEY
Chanute <i>Zool.</i> | ✓ MATTHEW J. BUCHELE
Cedar Vale <i>Bact.</i> | ✓ DEAN HERBERT DALTON
Pittsburg <i>Math</i> | ✓ RUTH MARIAN GERMANN
Clifton <i>Soc. Sci.</i> |
| ✓ MARY LUCILLE ASLING
Abilene <i>Bacteriology</i> | ✓ DOROTHY AILEEN BUCHER
Kansas City, Mo. <i>Social.</i> | ✓ MARY BORREDELL DALTON
Lawrence <i>Span.</i> | ✓ DELPHINE RUTH GFELLER
Junction City <i>Home Econ.</i> |
| ✓ ZOMA MAE ASPLUND
Enid, Okla. <i>English</i> | ✓ WILLIAM HAROLD BUCK
Junction City <i>Chem.</i> | ✓ VINCENT A. DAVIS, Jr.
Emporia <i>Journ.</i> | ✓ PEGGY ELIZABETH GHORMLEY
Los Angeles, Calif. <i>Social.</i> |
| ✓ JANE PATRICIA ATWATER
Kansas City, Mo. <i>English</i> | * ✓ RAYMOND BUCKLEY
Lawrence <i>Journ.</i> | * ✓ WORDEN ARMOND DAVIS
Garnett <i>Hist.</i> | ✓ WILMA GENE GILL
Bartlesville, Okla. <i>English</i> |
| * ✓ ARTHUR ANDREW AZLEIN
Effingham <i>Hist.</i> | ✓ JOHN MARTIN BURGER
Independence <i>Math</i> | ✓ JANE LEE DAVISON
McLouth <i>Eng.</i> | ✓ CLARA MARGARET GILLE
Lawrence <i>Home Econ</i> |
| | ✓ ROBERT HYDE BUSLER
Kansas City, Mo. <i>Pol. Sci.</i> | * ✓ CLEO ELOISE DeCAMP
Topeka <i>Sp. + Dr. Art.</i> | ✓ WILLIAM JAMES GILSTRAP
Topeka <i>Latin</i> |
| ✓ SALLIE JANE BACHELOR
Kansas City <i>History</i> | ✓ PHILIP EDMOND BUZICK
Lawrence <i>Law</i> | ✓ MARGARET E. DEMING
Oswego <i>Journ.</i> | ✓ SARAH MARGARET GLENN
Lawrence <i>Soc. Sci.</i> |
| ✓ ELVERSON EARL BAKER
Leavenworth <i>Chem.</i> | | * ✓ SALLY JO DEMSEY
Kansas City, Mo. <i>Eng.</i> | ✓ MARVIN T. GOEBEL
Alton, Iowa <i>Journ.</i> |
| ✓ HAZEL ELISBETH BARNES
Leavenworth <i>Bacteriol.</i> | ✓ LARRY LEROY CALKINS
Kansas City <i>Zool.</i> | ✓ MILTON DEUTSCH
Kansas City <i>Med.</i> | ✓ VIOLA JOSEPHINE GORDON
Eudora <i>Biol. Sci.</i> |
| ✓ HARVEY LEE BARRY
Columbus <i>Zoology</i> | * ✓ IDELLA LOUISE CAMPBELL
Salina <i>Social.</i> | ✓ MARGARET ELEANOR DODD
Kansas City <i>Span</i> | * ✓ JAMES DEAN GOUGH
Chanute <i>Bact.</i> |
| ✓ LOUIS BARVICK
Kansas City <i>Zoology</i> | ✓ ELEANOR MARIE CANFIELD
Kansas City, Mo. <i>Social.</i> | ✓ MARY ELIZABETH DOUGLAS
Lawrence <i>Psych.</i> | ✓ JOHN L. GOULD
Concordia <i>Social</i> |
| ✓ DON CLINTON BAUMHARDT
Hutchinson <i>Zoology</i> | ✓ AGNES LUCY CAPLES
Great Falls, Mont. <i>Econ.</i> | ✓ WILLIAM CURTIS DREESE
Lawrence <i>Zool.</i> | * ✓ REGINALD HAROLD GRABLE
Elkhart <i>Bact.</i> |
| ✓ EDWARD EARL BAUMHARDT
Hutchinson <i>Zoology</i> | ✓ ELISABETH H. CARRUTH
Topeka <i>English</i> | | ✓ HELEN LOUISE GRANT
Ellinwood <i>Eng.</i> |
| ✓ ANOL WILLARD BEAHM
Bison <i>Chem.</i> | * ✓ ELTON E. CARTER
Elkhart <i>Journ.</i> | ✓ MARY ANNE EDGERTON
Wichita <i>Art</i> | ✓ WILLIAM DOWNING GRANT
Kansas City, Mo. <i>Econ.</i> |
| ✓ GERTRUDE MARIE BEEBE
Lenexa <i>Journ.</i> | ✓ ARDATH CLAUDINE CAUBLE
Benedict <i>Journ.</i> | * ✓ JANICE LOUISE ELIOT
Lawrence <i>Social.</i> | ✓ JOHN RICHARD GREEN
Independence, Mo. <i>Med.</i> |
| ✓ WILLIAM T. BELT
Kansas City, Mo. <i>Span.</i> | ✓ MARY MARGARET CAVANESS
Paola <i>Home Econ.</i> | ✓ THOMAS A. ELLIS
Burlingame <i>Journ</i> | ✓ CHARLES DALE GRIBBEN
Parsons <i>Chem.</i> |
| ✓ BRUCE JASPER BIRKMIER
St. Francis <i>Psych.</i> | * ✓ MARY EDITH CHALLACOMBE
Topeka <i>English</i> | ✓ PETER A. ERICKSON
Lawrence <i>Pol. Sci.</i> | ✓ JOHN K. GRIFFITH
Hiawatha <i>Zoology</i> |
| ✓ LAWRENCE PRESTON BIRNEY
Bucklin <i>Pol. Sci.</i> | ✓ EDWARD RAYMOND CHRISTIAN
Rozel <i>Med.</i> | ✓ NORMAN G. EVANS
Maple City <i>Hist.</i> | ✓ BLAINE E. GRIMES
Kansas City <i>Econ.</i> |
| * ✓ WAYNE ELIAS BLACKBURN
New Albany <i>Chem.</i> | ✓ CHARLOTTE JUANITA CILEK
Jennings <i>Econ.</i> | ✓ ROBERT WILLIAM EVANS
Iola <i>Eng.</i> | ✓ SAUL JAMES GROSBURG
Brooklyn, N.Y. <i>Zoology</i> |
| ✓ ROBERT EMERSON BLAIR
McPherson <i>Hist.</i> | ✓ MARIAN LORRAINE CLARK
El Dorado <i>Bact.</i> | | ✓ CAROLYN ESTELLE GUIDINGER
Bartlesville, Okla. <i>Psych.</i> |
| ✓ ALMON DeLOS BLANCHAT
Wellington <i>Chem</i> | ✓ GEORGE HENRY CLASEN, Jr.
Washington <i>Journ.</i> | ✓ WILLIAM CARTER FARMER
Paola <i>Pol. Sci.</i> | * ✓ ELLA HALL
Kansas City <i>Social.</i> |
| ✓ KEITH WAYNE BLINN
Hutchinson <i>Law</i> | ✓ J. GORDON CLAYPOOL
Lawrence <i>Zool.</i> | * ✓ WILLIAM M. FERGUSON, Jr.
Wellington <i>Hist.</i> | ✓ SAMMYE ETHEL HALL
Tulsa, Okla. <i>Musica</i> |
| ✓ ALMEDA PEARL BOETH
Kansas City <i>Journ.</i> | ✓ PEGGY MARGUERITE CLAYTON
Lawrence <i>Social</i> | * ✓ ALEXANDER R. FIELDER
Salina <i>English</i> | ✓ BETTY NATOMA HAMMOND
Pomona <i>Eng.</i> |
| | ✓ JAYNE COATS
Wichita <i>Sp. + Dr. Art.</i> | ✓ JOHN K. FINCKE
Kansas City <i>Chem</i> | ✓ MILDRED RUBY HAUSER
Lawrence <i>Latin</i> |
| | * ✓ JOSEPH LAWSON COCHRANE
Hoisington <i>Journ.</i> | | |

* Assigned to class of 1938
† Assigned to class of 1937

- degree granted March 13, 1939

* degree granted November 14, 1938

XX - Two degrees after program

- BETTY JANE HEITMANN Kansas City, Mo. *Home Ec.*
- BERNICE HEKELNKAEMPER Atchison *Home Ec.*
- MARIE FRANCES HERRMAN Appleton City, Mo. *Bact.*
- BLAINE ZOOK HIBBARD Kansas City, Mo. *Zool.*
- CLIFFORD G. HILDRETH McPherson *Econ.*
- ESTHER BERNICE HIRD Lawrence *Social*
- ERNESTINE MAE HODGE Winfield *Sp. Adv. Art*
- CATHARINE H. HOLROYD Cedar Vale *Musis*
- JAMES LOUIS HOOPINGARNER Washington *Chem*
- GRETCHEN E. HORSTMANN Kansas City *Bact.*
- WILLIAM DONALD HORTON Chanute *Med.*
- DOROTHY RUTH HOUSTON Kansas City *Eng.*
- JEAN ARMOUR HOWES Arkansas City *Span.*
- RUTH IRENE HUDSON Fort Scott *Math*
- BEN MEYER HUEY Atchison *Econ.*
- DAVID C. HUMPHREY Mound Valley *Bact.*
- RUTH HURD Abilene *Psych*
- ANNA MARIE HURT Topeka *Social*
- OTIS ELMER JAMES, Jr. Kinsley *Med.*
- JEANNETTE JANUARY Osawatomie *Eng.*
- EDGAR W. JOHNSON, Jr. Boicourt *Med.*
- BETTY ANN JONES Kansas City, Mo. *Span.*
- CECILIA THERESIA JONES Los Angeles, Calif. *Bact.*
- JULIE HEIMBROOK JONES Kansas City, Mo. *Journ.*
- GERALD BERNARD JOYCE Topeka *Bact.*
- MARY LOUISE KANAGA Kansas City, Mo. *Span.*
- RICHARD KANE Bartlesville, Okla. *Hist.*
- LESTER BARNETT KAPPELMAN Lawrence *Journ.*
- IRVING KASS Topeka *Chem*
- DONALD KNIGHT KEEL Arkansas City *Chem.*
- ANNA KATHARINE KIEHL Pittsburg *Eng.*
- NELL KIMBROUGH Denver, Colo. *Bact.*
- FREDERICK W. KING Marion *Med.*
- MARGUERITE KINGMAN Kansas City *Social.*
- ELEANOR M. KLAPPENBACH Tulsa, Okla. *Hist.*
- ISABELLE KLOPPER Topeka *Chem.*
- HELEN LUCILLE KNUTH Herington *Eng.*
- MELVIN EARL KRIGEL Coffeyville *Chem.*
- DALE D. KUNS Bronson *Econ.*
- RICHARD KENNETH La BAN New York, N.Y. *Journ.*
- JOHN HUGHES LAFFER Wichita *Econ.*
- HOWARD MERLE LAMBORN Leavenworth *Zool.*
- BARBARA GEVENE LANDRITH Lawrence *Psych.*
- NORMA JANE LAUDENBERGER Kansas City, Mo. *Hist.*
- JOSEPHINE LAWS Lebo *Home Ec.*
- IRA CLARE LAYTON LeRoy *Zool.*
- MARJORIE JEANNETTE LeMAY Baldwin *Med.*
- JACOB EDWARD LEMMONS Wakeeney *Geol.*
- ALBERT N. LEMOINE, Jr. Kansas City, Mo. *Zool.*
- JESSIE M. LEMON Lawrence *French*
- WILBUR G. LEONARD White City *Pol. Sci.*
- EDWIN A. LEWIS Dodge City *Zool.*
- KENNETH RALPH LEWIS Topeka *Journ.*
- JOHN V. LINTNER, Jr. Wichita *Econ.*
- FRED CLYDE LITTOOY Olathe *Eng.*
- ETHEL PATRICIA LOCK Columbus *Psych.*
- MILTON RANDOLPH LONG, Kansas City, Mo. *Pol. Sci.*
- CHARLES D. LUECK, Jr. Netawaka *Social.*
- PAUL HYATT MacCASKILL Wichita *Law*
- LEONA MAE MACY Scott City *Bact.*
- CHARLES RAYMOND MAGEE Pretty Prairie *Med.*
- SAMUEL BURY MAIER Arkansas City *Eng.*
- TYSON HARVEY MAILEN Cottonwood Falls *Ent.*
- SUSAN MARY MALONEY Lawrence *Span.*
- PAUL ARNOLD MARRIOTT Stafford *Zool.*
- HESTER LORENE MARTIN Wichita *Psych.*
- HUBERT CILLIS MARTIN Coffeyville *Med.*
- RICHARD HENRY MARTIN Burdett *Journ.*
- ELMER LEWIS McCARTY Iola *Sp. Adv. Art*
- MINTA MARY McDONALD Eureka *Law*
- HARRY MORRIS McFarland, Jr. Kansas City, Mo. *Econ.*
- LUCY MARGY McGRAIL Kansas City, Mo. *Social.*
- ZELMA MAE McINTOSH Topeka *Home Ec.*
- MARY FRANCES McKAY El Dorado *Hist.*
- AGNES LOUISE McKIBBIN Wichita *Social.*
- PERRY MICHAEL McNALLY Iola *Geol.*
- BETTY LOU MECHEM Kansas City, Mo. *Musis*
- ELIZABETH ADELINE MEEK Arkansas City *Eng.*
- GORDON R. C. MELGREN Olsburg *Pol. Sci.*
- HAROLD D. MERCER Wellington *Social.*
- WILFRED CHARLES MIESSNER Lawrence *Journ.*
- JEWEL VIRGINIA MILLIGAN Kansas City *Pol. Sci.*
- WILLIAM CALDWELL MITCHELL Independence *Pol. Sci.*
- EMMA LOU MONTGOMERY Oswego *Hist.*
- JANE STIRLING MONTGOMERY Kansas City, Mo. *Eng.*
- NANCY MARGARET MOORE Cameron, Mo. *Sp. Adv. Art*
- SARAH MORGAN Kansas City *Zool.*
- PAUL WALTER MORITZ Marysville *Econ.*
- ROBERT MERRITT MORRIS Arkansas City *Chem.*
- MARGARET MORSE Abilene *Hist.*
- ROBERT JAMES MORTON Green *Chem.*
- CHARLES HOWARD MULLEN, Jr. Marion *Pol. Sci.*
- SALLIE LORRAIN MUNSON Noonan, N. Dak. *Home Ec.*
- GEORGE EDWARD MURPHY Kansas City, Mo. *Zool.*
- RUTH LORRAINE MURPHY Kansas City *Span.*
- ELEANOR WARFIELD MURRAY Douglaston, N.Y. *Hist.*
- MURIEL INGEBORG MYKLAND Chapman *Journ.*
- HOWARD KING NASON Kansas City, Mo. *Chem.*
- MERLIN ELROY NAYLOR Wellsville *Zool.*
- ALICE BODMAN NEAL Kansas City, Mo. *Home Ec.*
- ORLANDO F. NESMITH Belleville *Social.*
- WALDO LUTHER NEWBERG McPherson *Med.*
- ETHEL CHAPMAN NEWLAND Lawrence *Eng.*
- CHARLES MONROE NICE, Jr. Parsons *Bact.*
- JOHN DIBERT NICHOLS Topeka *Psych.*
- ELIZABETH LEE NOEL Glasco *Social.*
- PHILIP CHAMBERS NOHE Kansas City *Med.*
- VETE NOWOSINSKE Kansas City *Chem.*
- RUTH HILDEGARD NYBLAD Kansas City, Mo. *Eng.*
- VIRGINIA R. O'CONNOR Parsons *Eng.*
- MARY LOUISE OLIVER Kansas City *Spanish*
- ELSIE WINONA OLSON Lawrence *Eng.*
- JAMES RICHARD O'NEILL Kansas City *Med.*
- WILLIAM HENRY OSMOND Larned *Physics*
- ELVA ELIZABETH OTTMAN Kansas City, Mo. *Home Ec.*
- DOROTHY MAY OWSLEY Overland Park *Bact.*
- ALICE DANIELS OYLER Lawrence *Journ.*
- THELMA IRENE PAGE El Dorado *Eng.*
- ELIZABETH PAYTON Kansas City, Mo. *Chem.*
- EDWARD ARTHUR PECK Kansas City *Hist.*
- MARY MAXINE PENDLETON Kansas City, Mo. *Social.*
- MILO E. PETERSON Welda *History*
- ZELMA LOUISE PEYTON Lawrence *Journ.*
- EARL NORWOOD PIERCE Towanda *Social.*
- MARTHA ANN PINNEO Salina *Bact.*
- JAMES C. PINNEY Hiawatha *Med.*
- BERNARD BRUCE PIPES Lawrence *Bact.*
- GRACE MARGARET PLAYER Kansas City, Mo. *Eng.*
- ARTHUR A. POINDEXTER Wichita *Econ.*
- WILLIAM EARL PORTER Parsons *Eng.*
- JAMES LEA POSTMA Lawrence *Econ.*
- LOWELL ARTHUR POSTMA Topeka *Chem.*
- ALVA JOHN POWELL Iola *Social.*
- WILLIAM FRED POWERS Glasco *Chem.*
- DAVID PRAGER Fort Scott *Hist.*
- VERNON JAMES QUICK Halstead *Geol.*
- PHILIP MARTIN RAUP Timken *Econ.*
- MILFORD ALBERT RAWLINGS Geuda Springs *Hist.*
- ELIZABETH RAYMOND Lawrence *Eng.*
- BILL READ Iola *Eng.*
- LEO M. READING Paola *Bact.*
- NORMAN MELCHIOR REHG El Dorado *Eng.*
- ELIZABETH RUTH REID Iola *Social.*
- VORRIS MENNO REIST Oberlin *Med.*
- KATHARINE McGEE REWERTS Garden City *Zool.*
- F. LEON REYNOLDS Coffeyville *Span.*
- HELEN CYNTHIA RICE Lawrence *Eng.*
- LUCILE FERN RICH Lyndon *Home Econ.*
- JACK R. RICHARDSON Lawrence *Span.*
- ROBERT QUINN ROHDE Lawrence *Eng.*
- MERRILL JOSEPH ROLLER Altamont *Bact.*
- ROSALIE DELOYT RONEY Marquette *Chem.*
- PASCAL ALLEN RONIGER Hymer *Zool.*
- LELA ISABEL ROSS Dover *Eng.*
- KARL M. RUPPENTHAL Russell *Span.*
- PHILIP RUSSELL Hutchinson *Journ.*
- ALIENE PEACE SABOL Lawrence *Bact.*
- MARIE EDNA SABOL Lawrence *Bact.*
- JANET SAGE Augusta *Eng.*
- ADDENE WINIFRED SAXTON Waverly *Home Econ.*

* Assigned to class of 1938
 † Assigned to class of 1937
 ‡ Assigned to class of 1934

- | | | | |
|---|---|--|--|
| ✓ MARY JANE SCHOCK
Kansas City, Mo. <i>Home Ec.</i> | ✓ MARY NAN STEEL
Bartlesville, Okla. <i>Social</i> | * HERBERT DON TOWSON
Kansas City, Mo. <i>Zool.</i> | ✓ HELEN E. WILKERSON
Lawrence <i>Journ.</i> |
| ✓ HUBERT A. SCHROETER
Topeka <i>Econ.</i> | ✓ VIRGINIA LEE STEEVES
McPherson <i>Social</i> | * MARIAN TREMBLEY
Kansas City <i>Social</i> | ✓ CHARLES C. WILLIAMS
Lyons <i>Deat.</i> |
| ✓ ROBERT L. SCHWAB
Hutchinson <i>Med.</i> | ✓ ROBERT L. STEPHENSON
Topeka <i>Ent.</i> | ✓ RAYMOND DAYTON TRIPP
Herington <i>Pol. Sci.</i> | ✓ HELEN ELIZABETH WILSON
Kansas City <i>Eng.</i> |
| ✓ DAVID HARLOW SCOTT
Lawrence <i>Hist.</i> | ✓ CHARLES GRANT STIPP
Kansas City <i>Zool.</i> | * MARGARET BARR TROMBOLD
Iola <i>Bact.</i> | ✓ MARGARET J. WILSON
Kansas City, Mo. <i>Eng.</i> |
| ✓ MARION ALBERTA SEAMANS
Lawrence <i>Hist.</i> | ✓ DORIS STOCKWELL
Lawrence <i>Econ.</i> | ✓ FRANCIS O. TROTTER, Jr.
Kansas City, Mo. <i>Med.</i> | ✓ MARY ELIZABETH WILSON
Ness City <i>Bact.</i> |
| * ELIZABETH LOUISE SEARLE
Topeka <i>Music</i> | ✓ BILLIE STOECKLER
Topeka <i>Berm.</i> | ✓ JOHN RANDOLPH TYE
Chanute <i>Eng.</i> | * CLARENCE MORRIS WINSLOW
Tonganoxie <i>Psych.</i> |
| ✓ CLIFFORD WAYNE SELLON
Cunningham <i>Deat.</i> | ✓ DANIEL BERNARR STONE
Wellington <i>Bact.</i> | * WILLIAM BENJAMIN TYLER
Parsons <i>Journ.</i> | ✓ ARTHUR HAMLIN WOLF
Topeka <i>Econ.</i> |
| * ESTHER ELIZABETH SHIVELY
LeRoy <i>Social.</i> | ✓ OLLIE IRENE STONE
Horton <i>Bact.</i> | ✓ VIRGINIA VARGA
Kansas City, Mo. <i>Sp. & Dr. Art.</i> | ✓ KARL THEODORE WOLF
Kansas City <i>Psych.</i> |
| ✓ MARY JANE SIGLER
Kansas City <i>Journ.</i> | ✓ BENJAMIN LOGAN STOTTS
Garden City <i>Hist.</i> | ✓ CHARLES W. VARVEL
Fort Scott <i>Chem.</i> | ✓ DORIS ETHELYN WOOD
Kansas City, Mo. <i>Bact.</i> |
| ✓ LAWRENCE M. SIGMUND
Wetmore <i>Law</i> | ✓ JOHN MACLEAN STRATTON
Lawrence <i>Pol. Sci.</i> | * GEORGE von LEONROD, Jr.
Hutchinson <i>Zool.</i> | * KENNETH RUSSELL WOOD
Lawrence <i>Math.</i> |
| ✓ PHYLLIS SIKES
Leonardville <i>Sci. & Art.</i> | ✓ LUCILE STRATTON
Iola <i>Eng.</i> | ✓ ERMA FRANCES WAHL
Kansas City, Mo. <i>Psych.</i> | ✓ BARBARA ELLEN WOODARD
Hutchinson <i>Hist.</i> |
| ✓ MERLE EDWIN SIMMONS
Kansas City, Mo. <i>Span.</i> | ✓ EARL STUCKENBRUCK
Wichita <i>Psych.</i> | ✓ JAMES DONALD WATSON
Claffin <i>Med.</i> | ✓ ATHELIA ANN WOODBURY
Kansas City, Mo. <i>Psych.</i> |
| * DONALD BURGESS SIMPSON
Medicine Lodge <i>Hist.</i> | ✓ NELSON H. SULLIVAN
Kansas City <i>Pol. Sci.</i> | * ALBERTA EUNICE WEBER
Lawrence <i>Home Ec.</i> | * WILL THORNTON WOODMAN
Arkansas City <i>Hist.</i> |
| ✓ AGNES BARBERRY SKOLOUT
Beardsley <i>Journ.</i> | ✓ VINCEL SUNDGREN
Falun <i>Med.</i> | ✓ RANDAL WEED
Lawrence <i>Bact.</i> | ✓ DELOS WOODS
Wichita <i>Social</i> |
| ✓ ALAN ROY SLEEPER, Jr.
Iola <i>Med.</i> | ✓ JAMES NEIL SUSSEX
Kansas City <i>Med.</i> | ✓ EDWARD G. WEGENEK
St. Joseph, Mo. <i>Ent.</i> | * DORCILLE WYRICK
Leavenworth <i>French</i> |
| * MARGARET LOUISE SLENTZ
Lewis <i>Home Ec.</i> | ✓ GERALD DEAN SUTTON
Hoyt <i>Eng.</i> | ✓ EDWARD CLINTON WEIFORD
Kansas City, Mo. <i>Med.</i> | ✓ JONATHAN THOMAS YOE
Independence <i>Journ.</i> |
| ✓ ROBERT JACKSON SLOCOMBE
Peabody <i>Chem.</i> | ✓ GRACE LOUISE TAYLOR
Hutchinson <i>Social</i> | ✓ ROBERT MINGO WELCH
Muskogee, Okla. <i>Social</i> | ✓ JEANNE YOUNGMAN
Kansas City, Mo. <i>Social</i> |
| ✓ ELDON BLAKE SMITH
Kansas City <i>Pol. Sci.</i> | ✓ JEAN THOMAS
Waterville <i>Journ.</i> | ✓ DOROTHY K. WERNER
Lawrence <i>Eng.</i> | ✓ RUBEN ZADIGAN
New York, N.Y. <i>Chem.</i> |
| ✓ LUCILLE HOWARD SMITH
Lyons <i>Hist.</i> | ✓ EVELYN RUTH THOMPSON
Gove <i>Eng.</i> | * L. RICHARD WHITE
Norton <i>Econ.</i> | ✓ JOHN JOSEPH ZAHRADNIK
Kansas City <i>Zool.</i> |
| ✓ SHIRLEY JEAN SMITH
Pittsburg <i>Journ.</i> | ✓ RUTH ELLEN TIMPE
Easton <i>Journ.</i> | * THADDEUS HUG WHITE
Manhattan <i>Zool.</i> | ✓ JOHN W. ZOOK
Larned <i>Bact.</i> |
| ✓ GRETCHEN SPEELMAN
Lawrence <i>Social</i> | ✓ PATRICIA EDSON TOMBAUGH
Burdett <i>Philos.</i> | | |
| ✓ CHARLOTTE PEARL STAFFORD
Neodesha <i>Bact.</i> | ✓ ELON MOWREY TORRENCE
Everest <i>Journ.</i> | | |
| ✓ MARY MILDRED STANLEY
Bushnton <i>Social.</i> | | | |

Bachelor of Science in Nursing

- ✓ DOROTHY JANE SHEARER
Junction City

Bachelor of Science in Medicine

- | | | | |
|---|--|--|-------------------------------------|
| ✓ RALPH WOODS BOHNSACK
Lawrence | ✓ WALTON CHARLES INGHAM
Lawrence | * GAYLORD P. NEIGHBOR
Kansas City | ✓ DOYLE ALEXANDER SHRADER
Sawyer |
| ✓ HAYDEN HACKNEY DONAHUE
Wellington | ✓ JAMES GARFIELD JANNEY, Jr.
Dodge City | ✓ RICHARD HILL O'DONNELL
Hutchinson | ✓ DANIEL LLOYD TAPPEN
Salina |
| ✓ ROBERT MARSHALL DRISKO
Kansas City | ✓ THOMAS JOSEPH LUELLEN
Newton | ✓ JACK WILLIAM REVERE
Kansas City | ✓ LEO FRANCIS WALLACE
Meriden |
| ✓ ROBERT HOWARD DUNHAM
Paola | | | |

SCHOOL OF ENGINEERING AND ARCHITECTURE

Presented by IVAN C. CRAWFORD, Dean

Bachelor of Science in Architecture

- | | | | |
|---|---|---|------------------------------------|
| BENJAMIN SHELDON BOWERS
Ottawa | LESTER HENRY DINSMORE
Keshena, Wis. | THOMAS J. GERAUGHTY
Kansas City, Mo. | CHARLES WILSON STRIEBY
Humboldt |
| RAYMOND LESTER FRIEDSON
Kansas City, Mo. | JOHN CHARLES MORLEY
Kansas City, Mo. | | |

* Assigned to class of 1938

Bachelor of Science in Architectural Engineering

EDMUND ANDREW KREIPE
Tecumseh

*SALVATORE SEBASTIAN PATTI
Kansas City, Mo.

LYLE L. PAXSON
Burr Oak

3

Bachelor of Science in Chemical Engineering

STANLEY A. ALLEMAN Kansas City	*MELVIN GERSHON Kansas City, Mo.	*LUCK LEE MCGREGOR Kansas City, Mo.	GEORGE THOMAS STEVENIN, Jr. Kansas City, Mo.
*LOUIS F. BALLARD, Jr. Pittsburg	GEORGE HEATON GORDON Kansas City, Mo.	HENRY GREEN PARKER Parsons	MERLE RAY STEVENSON Parsons
NORMAN CLARK CARTER St. Joseph, Mo.	DALE VINCENT HAMMOND Parsons	GLENN EDWARD PRICE Merriam	ROBERT D. STROUP Lawrence
DONALD DAN DANNENBERG Kansas City, Mo.	PAUL BLOCHER HODGES Kansas City, Mo.	JOSE RAMOS Parsons	DUARD LEE THOMPSON Kansas City
HAROLD N. ENGEL Merriam	CHARLES HERVY HUBBELL Kansas City, Mo.	WALTER LESLIE RIPPETEAU, Jr. Kansas City, Mo.	JOHN ERNEST VAUGHAN Kansas City, Mo.
BURNETT G. FIRSTENBERGER Topeka	LEWIS M. KIEFFER Lawrence	WALTER O. SCHELLENBERG Fort Scott	†GORDON H. WEYERMULLER Lawrence
WILLIAM KIRK FOSSETT Wellington	*THEODORE FREDERICK KREIPE Tecumseh	DONALD ARTHUR SPALDING Lawrence	

27

Bachelor of Science in Civil Engineering

SOLIVER BASINGER Meade	JOE PETE FORNELLI Cherokee	THEODORE RUSSELL MAICHEL Overbrook	RAYMOND MARVIN ROGERS Toronto
‡HARRY POWELL BEAL Pittsburg	LYLE RAYMOND FOY Hutchinson	DUANE OWEN MAIN Kansas City, Mo.	JAMES ROBERT SHIPLEY, Jr. Lawrence
JAMES W. CAPS Lawrence	JOHN KASPER FREI Topeka	ROBERT ROY MEANS Kansas City, Mo.	ROY ALFRED TOOMEY Kansas City, Mo.
MARVIN E. COX Yates Center	LESTER A. HAUG Seneca	WILBER ELTON PADDEN Toronto	FRANCIS M. VEATCH, Jr. Kansas City, Mo.
*FRANCIS MELVIN DRAKE Topeka	JOHN FRANKLIN HEADRICK Fort Scott	JOHN PROCTOR RITCHIE Wichita	*EDGAR BAILEY WINTON Lawrence
REAMY CURTIS FITCH Frankfort	WILLIAM JOSEPH KARP Kansas City, Mo.	THOMAS B. ROBINSON Kansas City, Mo.	

23

Bachelor of Science in Electrical Engineering

AXEL WILLIAM ANDERSON Iola	WILLIAM LEROY CURTISS St. Joseph, Mo.	CLAUDE A. KETTERING Topeka	*HARRY A. NOBLE, Jr. Kansas City, Mo.
ROBERT LEE BROWNING, Jr. Kansas City, Mo.	SAMUEL LOUIS FOSTER Topeka	HERBERT LEE KRAUSS Topeka	RUSSELL T. ROSENQUIST Kansas City, Mo.
CLAUDE HUBERT BURNS Lawrence	RICHARD FLOYD GRABER Moundridge	†CHARLES ELWOOD LAUB Kansas City	ROBERT STANLEY SKINNER Kansas City, Mo.
*JAMES GORDON CLARKE Lecompton	CHARLES R. GREENLEES, Jr. Lawrence	GEORGE BERNARD LOPER Topeka	HARVEY SAMUEL STEELE Sabetha
CHARLES A. CROUCH Topeka	DONALD MARK HAIGHT Paola	MALCOLM G. MILLER Latham	FERRIS ROTHWELL SUMMERS Kansas City, Mo.
EDWARD LEE CURTIN Kansas City, Mo.	*RAY RICHARD JENNER Chanute	PHILLIP MOVITZ Kansas City	

23

Bachelor of Science in Industrial Engineering

DONALD METZLER Lawrence	*EDWARD SPENCER SAFFORD Augusta	*RICHARD M. SEIBEL, II Amarillo, Texas
----------------------------	------------------------------------	---

3

Bachelor of Science in Mechanical Engineering

GEORGE D. CARTER Lawrence	VIRGIL WAYLAND HACKETT Kansas City, Mo.	EDGAR D. LEIGH Lawrence	JOHN A. TROTTER Topeka
GEORGE HAMILTON COBB Lawrence	*BRANDON S. JENISON Chicago, Ill.	ALBERT SEWARD PALMERLEE Lawrence	ROBERT KECK WILLIAMS Joplin, Mo.
MARTIN L. DENLINGER Lawrence	ROBERT L. KING Kansas City, Mo.	THOMAS R. PALMERLEE Lawrence	HARRY E. YOUNG, Jr. Kansas City
CHARLES EDWARD GAULT Kansas City, Mo.	NORMAN F. KOENIG Topeka	*ELTON EARL RUSH Joliet, Ill.	
CHARLES EUGENE GODFREY Los Angeles, Calif.	PRESTON WALTER LAMPTON Fort Scott	RICHARD INSLEY SUTTON Oskaloosa	

18

* Assigned to class of 1938

† Assigned to class of 1937

§ Assigned to class of 1932

‡ Assigned to class of 1929

Bachelor of Science in Mining Engineering

EDWARD WHITE BAKER
Lawrence
GEORGE CONGDON HOLLINGER
Tulsa, Okla.

JOHN STRATTON PAGE
Ottawa
WRAY ARUNDEL SHOCKLEY
Lawrence

CLIFFORD LEON WILLIS
Thayer
HOWARD WINN
McPherson

6

Bachelor of Science in Petroleum Engineering

J. MARSHALL NYE
Wichita

1

Bachelor of Science, 5 Year

* ALBERT SEWARD PALMERLEE
Lawrence

** THOMAS R. PALMERLEE
Lawrence

** GLENN EDWARD PRICE
Merriam

3-113

SCHOOL OF FINE ARTS

Presented by DONALD M. SWARTHOUT, Dean

Bachelor of Music Education

ROBERT THOMAS BOYLE
Topeka

HAL DAVIS DELLINGER
Dodge City

MARY KATHERINE MARKHAM
Parsons

RAYMOND G. RENOE
Norton

ESTHER MAURINE BROCKWAY
Baldwin City

MARGARET ELEANOR DRAPER
Oswego

*LOUIS LUDWIG MASER
Fort Pierce, Fla.

MARY K. RUTHERFORD
Leavenworth

MAURICE LEROY CATER
Lawrence

*HELEN PATRICIA GLEN
Shawnee, Okla.

EDMONDA ALLEYENE MERCER
Milton

ROSE VIRGINIA STACH
Topeka

*REX ALTON CONNER
McPherson

*BETTY GROVE
Tulsa, Okla.

HELEN MARIE MEYER
Wathena

*MARGARET ICE STOUGH
Mound Valley

ROBERTA LORRAINE COOK
Aspinwall, Pa.

H. LYNN HACKLER
Topeka

ROBERTA ELSBETH MITCHELL
Coffeyville

*EVELYN LOUISE THACKER
Pratt

LEWIS ANDERSON COPELAND
Lawrence

LAURA HELEN JOHNSON
Mound City

EUGENE LEE O'BRIEN
Concordia

EVELYNN E. WHITEFORD
Lawrence

RUTH ANN CRARY
McPherson

*ROYENA LOUISE KIPP
St. John

AVIS ORILLA PETERS
Utica

WARREN HUTTO WILSON
Turner

28

Bachelor of Music

BETTY CHARLENE BARBER
Ralston, Okla.

Violin

JEAN VIRGINIA EICHENBERGER
Macksville

Piano

ELLEN LOUISE MERCER
Paradise

Piano

RUTH ARDIS BOMAN
Fredonia

Piano

NINA GERTRUDE GRIFFITH
Kansas City, Mo.

Piano

*CARROLL ELWIN NICKELS
McLouth

Violin

MARTHA MAXINE BOUCHER
Bartlesville, Okla.

Piano

RITA MARIE GUNSAULLUS
Ft. Scott

Cello

ALICE W. RUSSELL
Lawrence

Piano

*MARY JANE BRUCE
Kansas City

Piano

*CORINNE HIGH
Lawrence

Piano

ELIZABETH LOUISE SEARLE
Topeka

Harp

JANE CHESKY
Halstead

Piano

LUCILE McVEY
Herington

Piano

JOYCE VETTER
Lawrence

Piano

GERALD EDWARD COLE
Topeka

Organ

16

Bachelor of Fine Arts

MARCEL JAMES ALEXANDER
Lawrence

Design

GWENDOLYN MARY EUSTACE
Kansas City

Public School Art

BARBARA BELLE ALLEN
Kansas City

Public School Art

*FRANK CHARLES EWING
Estancia, N.M.

Painting

DOROTHY JANE BLUE
Lawrence

Design

VERGIE JOY FRAZIER
Athol

Public School Art

MARY LOU BORDERS
El Paso, Texas

Design

CLARA L. HAGEN
St. Joseph, Mo.

Public School Art

*WILLIAM HUBERT CAMPBELL
Muncie

Design

MARY HELEN HARRISON
Lawrence

Public School Art

MERIDITH LOUISE DYER
Kansas City, Mo.

Design

MARY VIRGINIA HAWKINSON
Kansas City, Mo.

Design

* Assigned to class of 1938

¶ Assigned to class of 1935

— CHARRIE ANN HAY
Lawrence

— CAROLYN MURROW HENRY
Highland

* CAROL LeROY JOHNSON
Alta Vista

— JUNE JANET JOHNSON
Kansas City, Mo.

* TOM DOUGLAS JONES
Lawrence

Design

Public School Art

Painting

Design

Design

* JAMES THURMAN KEPNER
Joplin, Mo.

— MARGARET ANN MONTGOMERY
Lawrence

MAX NIXON
Augusta

— ELEANOR MARY OVERMIER
Ponca City, Okla.

— ALBERTA VIRGINIA WAID
Cherryvale

Painting

Design

Drawing and Painting

Public School Art

Design

15
7

47
19
6

22-66

SCHOOL OF PHARMACY
Presented by L. D. HAVENHILL, Dean
Bachelor of Science in Pharmacy

— BETTY ROSE BUSENBARK
Wetmore

JOHN G. CYGIEL
Kansas City

ALBERT FRENCH DeFEVER
Fall River

— KATHLEEN DURBIN
Florence

DeWITT MARSHALL HARKNESS
Burlingame

— *OLLIE MAXINE HAVER
Meade

ALBERT ANDERSON LAUGHLIN
Emporia

* LOREN JACK LEONARD
Hewins

CHARLES G. LYON, Jr.
Coldwater

RUSSELL ULMER NESBITT
Kansas City

LLOYD ADAMS ORGAN
Lawrence

MILLARD EUSTACE SCHULZ
Augusta

— ELIZABETH JANE STEWART
Parsons

GEORGE LEO VARNES
Lawrence

4

10 M.

14

SCHOOL OF EDUCATION
Presented by RAYMOND A. SCHWEGLER, Dean
Bachelor of Science in Education

— ALMA HERMIONE BIGELOW
Topeka

— LORETTA ELIZABETH BOYLE
Salina

— CATHERINE JANE CANNON
Dexter, Mo.

* MARCELLA F. CAPE
Coffeyville

CECIL DAREL CASS
Howard

* GORDON HENRY CLUCAS
St. Louis, Mo.

— ESTHER ELIZABETH DeBORD
St. Joseph, Mo.

* ERNEST COURTNEY EDMONDS
Oskaloosa

* ALMA EPHRAIMSON
Kansas City

— DOROTHY EPPS
Kansas City, Mo.

* NADINE FALLEY
Kansas City

— EVALYNN DOLORIS FETHERLIN
Iola

* ANNA JANAVIE FINK
Wichita

CHESTER FRIEDLAND
New York, N.Y.

HELEN FRANCES FUSSMAN
Humboldt

* VIOLETTE GROSSARDT
Cliffin

FLOYD HANSON
Clay Center

* FORREST M. HARDACRE
Smith Center

HELEN HUFFMAN
Lecompton

CURTICE DWIGHT JENKINS
Lawrence

ERNEST HOWARD KLANN
Glendale, Calif.

— MARY KATHLEEN LATTNER
Tulsa, Okla.

— MARY ELIZABETH LEARNARD
Lawrence

JOE MORRIS MARSHALL
Quenemo

PAUL ORMOND MASONER
Lawrence

— VERA LUCILE McCOSKRIE
Overland Park

* GRACE MINOR
Independence, Mo.

* MARGARITA OSMA
Lawrence

* HAZEL JUNE OWEN
El Dorado

— ALICE J. PADEN
Topeka

* EDITH F. PEARSON
Kansas City

* IRENE SOPHIA PEARSON
Kansas City

LAWSON MEREDITH ROBERTS
Lawrence

* VERDA LOUISE ROBERTS
Kansas City

— MARGARET ETHYL SHIRLING
Kansas City, Mo.

MAX L. SIMS
Kinsley

— MARY VIRGINIA STAUFFER
Newton

MANO WILLIAM STUKEY
Hoisington

* KATHERINE CAROLYN SUNJA
Kansas City

* RAYMOND W. SWANSON
Randolph

* ALICE CORA TITT
Kansas City

— MARGARET VAN CLEAVE
Kansas City

* JOHN W. WATERBURY, Jr.
Cherryvale

* MARIE CLEOLA WATSON
Kansas City

— DOROTHY JANE WILL CUTS
Topeka

— MARIE WRIGHT
Kansas City

31
15

46

University Teacher's Diploma

* LOREN WESLEY AKERS
Centerville

✓ MILTON EDWARD AKERS
Coffeyville

— ARTHUR ANDREW AZLEIN
Effingham

✓ SALLIE JANE BACHELOR
Kansas City

✓ GERTRUDE MARIE BEEBE
Lenexa

✓ WILLIAM T. BELT
Kansas City, Mo.

ALMA HERMIONE BIGELOW
Topeka

— BARBARA JANE BOSWELL
Baxter Springs

LORETTA ELIZABETH BOYLE
Salina

— JESSIE MARIE BRADBURY
Independence

— DOROTHY ELAINE BUBLITZ
Kansas City, Mo.

— JOHN MARTIN BURGER
Independence

— CATHERINE JANE CANNON
Dexter, Mo.

— MARCELLA F. CAPE
Coffeyville

— CECIL DAREL CASS
Howard

— CHARLOTTE JUANITA CILEK
Jennings

— PEGGY MARGUERITE CLAYTON
Lawrence

— GORDON HENRY CLUCAS
St. Louis, Mo.

— BETTY LINDLEY COLE
Coffeyville

— ESTHER K. COOPER
Kansas City

* Assigned to class of 1938

† Assigned to class of 1937

— granted December 14, 1938 (College students)

* granted April 1, 1939 (College students)

✓ granted June 12, 1939 (College students)

- | | | | |
|--|---|---|---|
| ✓ RUBY E. CRARY
Kansas City | ✓ MILDRED RUBY HAUSER
Lawrence | ✓ SARAH MORGAN
Kansas City | ✓ MARGARET ELLEN SIMMONS
Lake City |
| ✓ JANE LEE DAVISON
McLouth | HELEN HUFFMAN
Lecompton | ✓ MARGARET MORSE
Abilene | ✓ MERLE EDWIN SIMMONS
Kansas City, Mo. |
| ESTHER ELIZABETH DeBORD
St. Joseph, Mo. | ✓ RUTH IRENE HUDSON
Fort Scott | ✓ SALLIE LORRAIN MUNSON
Noonan, N. Dak. | MAX L. SIMS
Kinsley |
| ✓ CLEO ELOISE DeCAMP
Allen | ✓ RUTH HURD
Abilene | JOHN M. NELSON
Newton | ✓ MARY VIRGINIA STAUFFER
Newton |
| ERNEST COURTNEY EDMONDS
Oskaloosa | ✓ JEANNETTE JANUARY
Osawatomie | ✓ VIRGINIA ROSALIND O'CONNOR
Parsons | MANO WILLIAM STUKEY
Hoisington |
| ALMA EPHRAIMSON
Kansas City | CURTICE DWIGHT JENKINS
Lawrence | ✓ MARY LOUISE OLIVER
Kansas City | ✓ KATHERINE CAROLYN SUNJA
Kansas City |
| DOROTHY EPPS
Kansas City, Mo. | ✓ BETTY ANN JONES
Kansas City, Mo. | MARGARITA OSMAN
Lawrence | ✓ GERALD DEAN SUTTON
Hoyt |
| ✓ NORMAN G. EVANS
Maple City | ✓ MARY LOUISE KANAGA
Kansas City, Mo. | HAZEL JUNE OWEN
El Dorado | RAYMOND W. SWANSON
Randolph |
| ✓ ROBERT WILLIAM EVANS
Iola | ✓ LESTER BARNETT KAPPELMAN
Lawrence | ALICE J. PADEN
Topeka | ✓ JEAN THOMAS
Waterville |
| NADINE FALLEY
Kansas City | ERNEST HOWARD KLANN
Glendale, Calif. | THELMA IRENE PAGE
El Dorado | ✓ EVELYN RUTH THOMPSON
Gove |
| EVALYNN DOLORIS FETHERLIN
Iola | HELEN LUCILLE KNUTH
Herington | EDITH FREDRICKA PEARSON
Kansas City | ✓ RUTH ELLEN TIMPE
Easton |
| ANNA JANAVIE FINK
Wichita | MARY KATHLEEN LATTNER
Tulsa, Okla. | IRENE SOPHIA PEARSON
Kansas City | ALICE CORA TITT
Kansas City |
| CHESTER FRIEDLAND
New York, N.Y. | ✓ NORMA JANE LAUDENBERGER
Kansas City, Mo. | EDWARD ARTHUR PECK
Kansas City | ✓ MARGARET VAN CLEAVE
Kansas City |
| HELEN FRANCES FUSSMAN
Humboldt | MARY ELIZABETH LEARNARD
Lawrence | ✓ BILL READ
Iola | ✓ CHARLES W. VARVEL
Fort Scott |
| ✓ LUCILLE IRENE GAYNOR
De Soto | JESSIE M. LEMON
Lawrence | ✓ NORMAN MELCHIOR REHG
El Dorado | JOHN W. WATERBURY, Jr.
Cherryvale |
| ✓ RUTH MARIAN GERMANN
Clifton | JOE MORRIS MARSHALL
Quenemo | ✓ F. LEON REYNOLDS
Coffeyville | ✓ MARIE CLEOLA WATSON
Kansas City |
| ✓ SARAH MARGARET GLENN
Lawrence | PAUL ORMOND MASONER
Lawrence | LAWSON MEREDITH ROBERTS
Lawrence | ✓ DOROTHY JANE WILLCUTS
Topeka |
| ✓ VIOLA JOSEPHINE GORDON
Eudora | VERNA LUCILE McCOSKRIE
Overland Park | VERDA LOUISE ROBERTS
Kansas City | ✓ HELEN ELIZABETH WILSON
Kansas City |
| MILDRED ELIZABETH GRABLE
Elkhart | ✓ ELIZABETH ADELINE MEEK
Arkansas City | ✓ ROSALIE DELOYT RONEY
Marquette | HUGH ELLIS WIRE
Ottawa |
| VIOLETTE GROSSARDT
Clafin | ✓ GORDON RAYMOND MELGREN
Olsburg | ✓ LELA ISABEL ROSS
Dover | ✓ KENNETH RUSSELL WOOD
Lawrence |
| ✓ BETTY NATOMA HAMMOND
Pomona | ✓ HAROLD D. MERCER
Wellington | MARGARET ETHYL SHIRLING
Kansas City, Mo. | ✓ BARBARA ELLEN WOODARD
Hutchinson |
| FLOYD HANSON
Clay Center | GRACE MINOR
Independence, Mo. | ESTHER ELIZABETH SHIVELY
LeRoy | ✓ MARIE WRIGHT
Kansas City |
| FORREST M. HARDACRE
Smith Center | ✓ EMMA LOU MONTGOMERY
Oswego | ✓ PHYLLIS SIKES
Leonardville | |

111-157

76
35
111

SCHOOL OF BUSINESS
Presented by FRANK T. STOCKTON, Dean
Bachelor of Science in Business

- | | | | |
|---|---|--|--|
| THOMAS BAY ADAMS
Kansas City <i>gen Bus</i> | BRUCE CARLSON, Jr.
Americus <i>gen Bus</i> | LYMAN ALVAH CORLIS, Jr.
Lawrence <i>gen Bus</i> | CLEMENT WILLIAM FAIRCHILD
Kansas City, Mo. <i>gen Bus</i> |
| JACK ALLEN
Lawrence <i>gen Bus</i> | JACK ALLAN CARLSON
Kansas City, Mo. <i>gen Bus</i> | MARVIN MELVIN COX
Kingman <i>gen Bus</i> | ✓ REBECCA FARNEY
Kiowa <i>gen Bus</i> |
| GEORGE H. ANDERSON
Coffeyville <i>acct</i> | HOWARD V. CARPENTER
Belpre <i>gen Bus</i> | CARY INGRAM CROCKETT, Jr.
Fort Leavenworth <i>gen Bus</i> | JESSE R. FAULCONER, Jr.
Kansas City <i>gen Bus</i> |
| WILLIAM B. ASKREN
Caney <i>acct</i> | STEVEN ELLIS CAVE
Dodge City <i>gen Bus</i> | BARCLAY WEBER CUNNINGHAM
Kansas City <i>acct</i> | ✓ MARY DORETHEA FERGUSON
Marysville <i>gen Bus</i> |
| LLOYD DONALD AUTEN
Eureka <i>acct</i> | TED R. CHAPIN
Medicine Lodge <i>market</i> | MARVIN FRANCIS DAGGETT
Reading <i>acct</i> | WILLARD FENTON FIGLEY
Kansas City <i>finance</i> |
| J. ROBERT AYDELOTTE
Fort Scott <i>finance</i> | WALTER CORNELIUS CLAASSEN
Newton <i>finance</i> | PHILIP HOWARD DAWSON
Hutchinson <i>gen Bus</i> | NORMAN EDWIN FISHER
Paola <i>finance</i> |
| BERT F. BARNUM
Topeka <i>gen Bus</i> | ✓ ROBERT WILLARD CLAUSING
Coffeyville <i>gen Bus</i> | ✓ GENEVA MARIE DETLOR
Lawrence <i>acct</i> | WARREN KENNETH FISHER
Paola <i>gen Bus</i> |
| WILLIAM FREDERICK BEATY
Liberal <i>gen Bus</i> | MARION H. COBERLY
Hutchinson <i>gen Bus</i> | * MELVIN ENNIS DODD
Burlington <i>gen Bus</i> | ✓ PHYLLIS DIANA FOUST
Iola <i>gen Bus</i> |
| C. ROBERT BELT
Coffeyville <i>acct</i> | HARRY ISAAC COLDREN, III
Leavenworth <i>acct</i> | * MARION LOUISE DRESSER
Leavenworth <i>gen Bus</i> | KENNETH KEITH FRAIZER
Overland Park <i>acct</i> |
| * DONALD DICKSON BIRD
Arkansas City <i>gen Bus</i> | * DEAN HUDSON COLEMAN
Long Beach, Calif. <i>acct</i> | CHETT ARTHUR ECKMAN
Kansas City <i>gen Bus</i> | FRANCIS EDGAR GALLOWAY
Kansas City, Mo. <i>gen Bus</i> |
| EVAN DAN BOLIN, Jr.
Chanute <i>acct</i> | LESTER MARTIN COMBS, Jr.
Parsons <i>gen Bus</i> | JOHN P. EDWARDS
Paola <i>gen Bus</i> | VIRGIL L. GARRETT
Burlington <i>gen Bus</i> |
| JOSEPH JOHNSON BOWLUS
Coffeyville <i>acct</i> | LAWRENCE CLAYTON CONNER
Goff <i>acct</i> | RALPH ELSON
Smith Center <i>acct</i> | ✓ MARTHA JO GENGLER
Lawrence <i>acct</i> |
| * THOMAS M. BOWLUS
Coffeyville <i>gen Bus</i> | * GEORGE ARTHUR COOKINHAM
Topeka <i>gen Bus</i> | MAURICE A. ENGLISH
Hutchinson <i>market</i> | * ARNOLD REEVE GILBERT
Lawrence <i>finance</i> |
| CLARENCE CLINTON CARLGREN
Concordia <i>gen Bus</i> | LEROY CLARK COOPER
Kansas City <i>acct</i> | * EPHRAIM C. EWING
Kansas City <i>gen Bus</i> | EUGENE S. GOSNEY
Kansas City <i>gen Bus</i> |

* Assigned to class of 1938

- | | | | |
|---|--|---|---|
| WILLIAM A. GOSSAGE, Jr.
Hutchinson | CARL M. JOHNSON
Kansas City, Mo. | CLARK E. MYERS
Rossville | JOHN SARGENT SHELDON
Ottawa |
| *THOMAS RAYMOND GRAYBILL
Kansas City, Mo. | *CLARENCE E. JOHNSTON
Hammond | JACK SHELLY NESSLY
Mulvane | NILES RAYMOND SIEBERT
Canada |
| JULES F. GROGAN, Jr.
Kansas City, Mo. | CYRIL L. JOHNSTON
Lawrence | PHILIP W. NICHOLSON
Ellis | JOSEPH SINGMON
Kansas City, Mo. |
| WILLIAM GERALD GROHNE
Lawrence | HUGH T. JONES, Jr.
Chanute | HENRY JOHNSTON NIXON
Stilwell | DWIGHT ELLSWORTH SISNEY
Topeka |
| *ESTELLE HALL
Pittsburg | MORTON M. JONES
Kansas City, Mo. | JOHN O'BRIEN
Independence | ALFRED ROY SMITH
Lyons |
| NEAL HAMBLETON
De Soto | GEORGE EDWARD KATHARY
Salina | OLEN D. ODEN
Coffeyville | HARRIETTE MILDRED SMITH
Kansas City, Mo. |
| JOHN S. HARROW
Kansas City, Mo. | *EUGENE A. KLEMP
Leavenworth | *PATRICIA OWENS
Kansas City, Mo. | HAROLD E. SNYDER
Cheyenne, Wyo. |
| *CATHERINE ANNE HEINLEIN
Iola | FRANK KOMATZ
W. Mineral | FREDERICK HAROLD PATT
Kansas City, Mo. | JACK SPINES
Wichita |
| CHARLES V. HENDERSON, Jr.
Parsons | WALLACE E. KRAFT
Paola | *DONALD OTTO PHELPS
Lawrence | HARRY L. STUCKENBRUCK
Wichita |
| CHARLES ODEN HEROLD
Anthony | EDWARD VALDEAN KRUGER
El Dorado | CHARLES F. PIERSON
Oakley | JAMES HUBERT SUND
Topeka |
| RAY HESKAMP
Spearville | JEAN BERNARD LARSON
Osage City | *THELMA LORRAINE PYLE
Haviland | *JOSEPH GORDON SUOR
Kansas City, Mo. |
| KENNETH WOODROW HILT
Wellington | DERWARD ODES LAWSON
McCracken | †PRENTICE MYRON QUIRING
Newton | WALTER S. SUTTON
Glendale, Calif. |
| RUSSELL L. HODGE, Jr.
Kansas City, Mo. | JOHN LORD
Kansas City | *RICHARD J. REESE
Ottawa | GEORGE A. THOMPSON, Jr.
St. Joseph, Mo. |
| PAUL I. HOLCOM
Lawrence | PHILIP RODNEY LORD
Emporia | HERBERT HOOVER REGIER
Buhler | JOHN ROBERT TOWNSEND, Jr.
Emporia |
| *JUNE A. HOOVER
Kansas City, Mo. | *JOHN A. MAIER
Parsons | *ANNETTE REID
Howard | *CELESTE MAXINE VEDDER
Kansas City, Mo. |
| *JAMES RUSSELL HOPKINS
Kansas City, Mo. | WILBER ALLEN MANSFIELD
Kansas City, Mo. | JACOB REISS, Jr.
St. Joseph, Mo. | JOHN HENRY VOGEL, Jr.
Stuttgart |
| ELMER L. HORSEMAN, Jr.
Kansas City | *MARGARET MARSHALL
Herington | HAROLD EDWIN ROE
Corbin | WILLIAM ORMAN WANAMAKER
Barnes |
| NATHAN McDONALD HOWARD
Fort Scott | *WENDELL JAY McDONALD
Topeka | JACK SHERWOOD SAWYER
Hutchinson | TRUMAN F. WEIGAND
Emporia |
| RICHARD FORREST HOWARD, Jr.
Arkansas City | J. ROBERT McNAGHTEN
Hutchinson | *CHARLES M. SCHAIBLE
Fairview | GEORGE ROY WHITE, Jr.
Baxter Springs |
| STEPHEN HOLLISTER HOWBERT
Kansas City, Mo. | HARRY MELVIN MEINKE
Linwood | *MARIE PAULINE SCHWARTZ
Paola | GRANVILLE SMITH WILHELM
Kansas City, Mo. |
| HERBERT C. IFFERT
St. Joseph, Mo. | CHARLES ROBERT MEYER
Jewell City | WILLIAM WILSON SEITZ
Salina | LEONARD WOLFE
Meade |
| *ARLEEN GRIFFITH IRVINE
St. Joseph, Mo. | THOMAS H. MOORE
Gardner | ALBERT BERRY SENNE
Lawrence | DONALD EMERSON WOOD
Kansas City, Mo. |
| ROBERT LEE JESSEE
Centralia | WILBUR EUGENE MOSIER
Wichita | *THOMAS F. SEYB
Pretty Prairie | WILFERD W. WORTMAN
Harper |

17 W.
131 men

SCHOOL OF LAW

Presented by FREDERICK J. MOREAU, Dean

Bachelor of Laws

- | | | |
|---|--|--|
| *PRESTON ROGER ANDERSON, B.S. Bus. 1936
Independence | SWAIN WILLIAM HOUSE, A.B. 1937
Cedar Vale | JOAN LOUISE NEWBILL, A.B. 1937
Hutchinson |
| ROBERT McMATH AVERILL, A.B. 1937
Ottawa | STEVE F. HUSTON, A.B. 1937
Chetopa | *JOSEPH SCOTT PAYNE, A.B. 1937
Kansas City |
| OSCAR FRED BELIN, B.S. Bus. 1936
Clay Center | CHARLES BRANINE JOSEPH
Potwin | *JAMES WESLEY PUTNAM, B.S. Educ., 1935, A.B. 1936, K.S.T.C., Emporia; A.M. 1937
Emporia |
| ELBERT BYRON BRAINERD, A.B. 1937
Whitewater | WILLIAM ROY KIRBY, A.B. 1937
Coffeyville | SAM BENEFIEL REDMOND, A.B. 1937
Lawrence |
| HAROLD CHARLES COOK
Ford | ARTHUR SAMUEL KLEIN
Kansas City, Mo. | *EDWARD WILLIAM RICE, A.B. 1936
Salina |
| HARRY SAMUEL DEUTCH, A.B. 1937
Kansas City | BION KOHLER
Wichita | OLIVER DENCIL RINEHART, A.B. 1930
Parker |
| JOHN MARTIN FARLEY, A.B. 1937
Hutchinson | ***PAUL HYATT Mac CASKILL, A.B. 1939
Wichita | RAY BENJAMIN ROBERTS, Jr., A.B. 1937
Peabody |
| EDWARD V. GEARY, A.B. 1936
Lawrence | BURTON C. MADER, A.B. 1936
Florence | JOHN MERRITT ROUNDS, A.B. 1937
Caney |
| *ELMER HOWARD GOERING, A.B. 1937
Moundridge | MORRIS EVERETT MATUSCHKA, A.B. 1935, K.S.T.C. Pittsburg
Pittsburg | JOSEPH RICHARD SHEEDY, A.B. 1937
Fredonia |
| WILLIAM GOUGH, Jr., B.S. Bus. 1936
Chanute | RICHARD MORTON McMILLEN, A.B. 1937
Florence | *HERBERT HADLEY SIZEMORE
Lawrence |
| BILLY V. HAMPTON
Kinsley | EDGAR LOYAL MILES, A.B. 1937
Medicine Lodge | HERMAN WILSON SMITH, Jr., A.B. 1937
Parsons |
| JAMES McCREA HAUGHEY
Concordia | *MILDRED JEAN MITCHELL, A.B. 1936
Kansas City, Mo. | |

Degrees are from the University of Kansas unless otherwise noted.

° Assigned to class of 1933

* Assigned to class of 1938

GEORGE EDWARD STEPHENS, A.B. 1937
Lawrence
*THEODORE CARL TENNY, A.B. 1937
Lawrence

OMER GERALD VOSS, A.B. 1937, Ft. Hays
State College
Phillipsburg

*RICHARD GAYLOR WEAVER, A.B. 1934
Concordia
JAMES ALFRED WILLIAMS, A.B. 1937
Ft. Hays State College
Sharon Springs

Degrees are from the University of Kansas unless otherwise noted.

† Assigned to class of 1937

40
-2W
38 men

THE RESERVE OFFICERS' TRAINING CORPS

Presented by LT. COL. KARL F. BALDWIN, P.M.S.&T.

Appointed Second Lieutenant in the Coast Artillery Section, Officers Reserve Corps

JAMES G. BOUNDS
Paola
GEORGE D. CARTER
Lawrence
ROBERT B. DOOLITTLE
St. Louis, Mo.
WARREN K. FISHER
Paola
JESSE E. GAMBER
Great Bend

MYRON L. HARRIES
Wakeeney
LESTER A. HAUG
Seneca
RICHARD KANE
Bartlesville, Okla.
RAY G. LAWRENCE
Smith Center
JOE McCOY
McPherson

◦ALEXANDER C. MITCHELL
Lawrence
OTIS O. PERKINS
Lawrence
WILLIAM C. SNYDER
Ottawa
HARVEY S. STEELE
Sabetha

JAMES H. SUND
Topeka
MARTIN K. THOMEN, Jr.
Orange, Texas
DALE W. WHITAKER
Almena
JOSEPH A. ZISHKA
Effingham

18

Appointed Second Lieutenant in the Infantry Section, Officers Reserve Corps

WILLIAM B. ASKREN
Caney
WILLIAM F. BEATY
Liberal
†MATTHEW J. BUCHELE
Cedar Vale
JAMES T. CAHILL
Kansas City, Mo.
†SAMUEL A. CALDWELL
Kansas City, Mo.

†LEROY C. COOPER
Kansas City, Mo.
‡CHARLES H. FORE
St. Joseph, Mo.
OMER M. FUNK
Seneca
◦JOHN K. GRIFFITH
Hiawatha

JULES F. GROGAN
Kansas City, Mo.
†JOHN D. HILLIARD
Attica
PAUL B. HODGES
Kansas City, Mo.
‡NORMAN F. KOENIG
Topeka

◦JOSEPH H. LANGWORTHY, Jr.
Leavenworth
SIDNEY S. LINSKOTT, Jr.
Erie
WRAY A. SHOCKLEY
Lawrence
ROBERT T. WARD
Kansas City, Mo.

17

Appointed Second Lieutenant in the Chemical Warfare Section, Officers Reserve Corps

‡WALTER L. RIPPETOE, Jr.
Kansas City, Mo.
VINCENT C. RETHMAN
Seneca

◦ Received Certificate of Eligibility to receive commission when 21 years of age.
† To receive commission upon completion of camp, July 22, 1939.
‡ Received commission February 2, 1939.

2-37

SCHOOL OF MEDICINE

Presented by HARRY R. WAHL, Dean

Doctor of Medicine

RAYMOND B. ANDERSON, A.B. 1935
Ottawa
PAUL SELBY ANDERSON, Jr., A.B. 1935
Sylvan Grove
CLARENCE WILLET ASLING, A.B. 1934,
A.M. 1937
Kansas City
JAMES DALE BENNETT, A.B. 1935
Eskridge
ROBERT JAMES BOODY, A.B. 1936
Kansas City, Mo.
DONALD EUGENE BUX, B.S. Med. 1937
Topeka
WOODROW MARCELLUS CAMPION,
B.S. 1935, University of Wichita
Peck
RAY ALBERT CLARK, A.B. 1935
Kansas City
GUY WILLIAM CRAMER
Elsmore
VERNON DALE CUSHING, B.S. Med. 1937
Downs
CHRISTOPHER GATES DAVIS, A.B. 1935
Kansas City
HUGHES W. DAY
Kansas City
JACK D. De MOTT, A.B. 1936
Independence

BERNARD A. DONNELLY
Parsons
OLIVER EITZEN
Hillsboro
LAWRENCE ELWOOD FILKIN, A.B. 1933
Bonner Springs
LOUIS H. FORMAN, A.B. 1937
Lawrence
PAULINE GARBER, A.B. 1930, Wittenberg
College; A.M. 1933
Lawrence
RICHARD H. GREER, B.S. 1930, Washburn
College
Topeka
THOMAS ROBIN HOOD, A.B. 1935
Lawrence
KENNETH ROSS HUNTER, A.B. 1930,
Southwestern College; M.S. 1932,
Oklahoma A. and M. College
Belle Plaine
FRANK HAROLD JAMES, A.B. 1932,
Northwestern University
Kansas City
FRANKLIN JOHNSON
St. Francis
THOMAS A. KENDIG, A.B. 1935
Phoenix, Ariz.
ARTHUR C. LADD, A.B. 1936
Hutchinson

HENRY WALLACE LANE, A.B. 1933,
A.M. 1935
Lawrence
CARLETON HAROLD LEE, A.B. 1935,
University of Wichita
Wichita
JOHN ALEXANDER MacLEAN
Baldwin
STANTON ALBERT McCOOL, A.B. 1936
Seneca
LEO FRANCIS McKEE
Kansas City
JOE TONY McKIBBEN
Cherokee
MYRON G. MESSENHEIMER, A.B. 1931,
A.M. 1932
Lawrence
DONALD DUNCAN MEYER
Kansas City, Mo.
PAUL RICHARD MILLIGAN, A.B. 1936
Abilene
CLARK HAROLD MILLIKAN
Parsons
EDWARD PAYSON MININGER
Kansas City
RODGER ALLEN MOON, B.S. Med. 1937
Emporia
RAYMOND L. MORROW, A.B. 1930
Wellington

FRANCIS JAMES NASH, B.S. Med. 1937
Green

ARNOLD FRED NOTHNAGEL
Kansas City

GEORGE GERHARD OLEEN
Cleburne

FRANCIS EDWARD O'NEILL, A.B. 1935
Kansas City

RAYMOND LANCING PENDLETON
Independence

CECIL E. PETTERSON, B.S. 1936, Washburn
College
Topeka

RAYMOND DONALD PRUITT, B.S. 1933,
Baker University; A.B. 1936,
Oxford University
Kansas City

JAMES ARMAND REID
Pittsburg

CORBIN E. ROBISON, A.B. 1936, Fort
Bison
Hays Kansas State College

EDGAR P. SERERES
Powhattan

J. HAROLD SHANKLIN
Kansas City

EDWARD E. SHIRCLIFF, Jr., B.S. 1935,
Northwestern University
Hutchinson

NORMAN CLIFFORD SIEBERT, A.B. 1935
Canada

HARRY STATLAND
Kansas City, Mo.

CHARLES STEPHEN STOTTS, A.B. 1936
Benedict

OTIS DWIGHT SWAN, Ph.B. 1934,
University of Wisconsin
Topeka

CLAIR LEO SWANN, B.S. Med. 1937
Leavenworth

JACK T. TERRY
Ellsworth

BURL VEDDER THOMPSON, A.B. 1934,
Kansas State Teachers College
of Pittsburg
Isabel

MARY ELIZABETH THOMPSON, A.B. 1930,
M.S. 1932, University of Wichita
Wichita

HERBERT ALLEN TRACY, A.B. 1936
Neodesha

JOHN W. TURNER, A.B. 1937
Hope

DICK HOLLAND UNDERWOOD, A.B. 1936
Kansas City, Mo.

GORDON STANLEY VOORHEES, B.S. Med.
1937
Leavenworth

FRED E. WADE, A.B. 1936
Kansas City

EVERAL MARION WAKEMAN, A.B. 1936
Fowler

BYRON WESLEY WALTERS
Kansas City

ISADORE J. WAXSE, A.B. 1936
Independence

CLARENCE JACOB WEBER, B.S. 1923,
University of Illinois; Ph.D. 1928,
St. Louis University
Kansas City

JEAN BROWN WILLOUGHBY
Manhattan

HAROLD VERNON WOODS, A.B. 1935
Kansas City

LISLE MILTON WYATT, A.B. 1936
Kansas City, Mo. 70

Certificate of Internship

BUFORD S. CHAPPELL, M.D. 1938, State
of South Carolina Medical College
Winnsboro, South Carolina

HARRY L. DOUGLAS, B.S. 1928, Kansas
State Teachers College, Emporia;
M.D. 1938
Kansas City

PARKER K. HUGHES, M.D. 1938, State
University of Iowa
Des Moines, Iowa

WAYNE EMERSON MONSEES, A.B. 1935;
M.D. 1938
Kansas City, Mo.

ROBERT LEWIS NEWMAN, A.B. 1935;
M.D. 1938
Sterling

HAROLD LOYD PATTERSON, A.B. 1935;
M.D. 1938
Lyons

JESSE DAVID RISING, A.B. 1935;
M.D. 1938
Kansas City, Mo.

ROBERT WOODROW SCHNEIDER, B.S.
1935, University of Wisconsin;
M.D. 1938, University of Wis-
consin Medical School
Monroe, Wisconsin

WILLIAM FRENCH STONE, Jr., A.B.
1935; M.D. 1938
Tulsa, Okla. 9

Certificate of Residency

RALPH CARLISLE ELLIS, M.D. 1937.
One year
Kansas City, Mo.

TOM REID HAMILTON, A.B. 1932,
University of Missouri; M.D.
1935. Three years
Kansas City, Mo.

MORRIS SHERMAN HARLESS, B.S. in
Med. 1931; M.D. 1933.
Five years
Kansas City

LEE HERMAN LEGER, B.S. in Med. 1935;
M.D. 1935. Three years
Goodland

ROBERT PHILIP SMITH, A.B. 1930;
B.S. in Med. 1932; M.D. 1934.
Four years
Junction City 5

Certificate of Laboratory Work

NELDA NADINE BORTZ, A.B. 1938
Attica

MARIAN LOUISE GETTER, A.B. 1938
Arkansas City

DORIS GRIFFIN, A.B. 1938
Washington, D.C.

DOROTHY EVELYN MORGAN, A.B. 1934
De Soto

JUNE OWENS, B.S., Kansas State College,
Manhattan, 1938
Neodesha

DOROTHY BEATRICE STILLIONS, A.B.
1938
Blue Springs, Mo.

BETTE WASSON, A.B. 1938
Tulsa, Okla. 7

Certificate of Nursing

RUTH ARONSON
Kansas City, Mo.

DORIS LEVON AUGUSTUS, B.S. in Home
Economics and Nursing 1939,
Kansas State College
Waterville

ETHEL IRIS COLLINS, B.S. 1936, Kansas
State College
Dwight

LAURA OPAL COPPLE
Mound City

HELEN NADINE DUCKETT
Lamar, Mo.

MARY JANE ELLIOTT
Mishawaka, Ind.

THELMA LOUISE FIESER, B.S. in Home
Economics and Nursing 1939,
Kansas State College
Norwich

MINNIE MAXINE KERLEY GRIMES
Kansas City, Mo.

LORENE HAFFNER
Stahl, Mo.

RUTH ELIZABETH HINES
Bartlesville, Okla.

ELIZABETH IDA JUERGENSEN
Columbus

JANICE ROBERTA LEHMANN
Manhattan

JEANNE MALCOM
Kansas City

DOROTHY NELLE NOELL, B.S. in Home
Economics and Nursing 1939,
Kansas State College
Syracuse

JESSIE LOUISE NORWOOD
Lecompton

HELENE JULIA ORLOFF
Kansas City

LOIS SOCORRO OROPEZA
Kansas City

BEULAH BESS RAMEY
Hugoton

OPAL MAY SCHWANZ
Kiowa

WINIFRED LEE SELLARDS
Topeka

DOROTHY JANE SHEARER, B.S. Nursing,
1939
Junction City

EUNICE ELIZABETH SMITH
Augusta

THERESA ELEANOR SOUDER, B.S. in
Home Economics and Nursing
1939, Kansas State College
Dodge City

MATILDA MARY VOTH
Wichita

THE GRADUATE SCHOOL

Presented by ELLIS B. STOUFFER, Dean

Master of Arts

- | | | | |
|---|----------------|--|---------------------|
| R. STANLEY ALEXANDER, Topeka, B.S. 1936, Washburn College
<i>Thesis: Investigation of the photographic effect of neutrons.</i> | Physics ✓ | SISTER M. AMBROSE CONWAY, Atchison, A.B. 1931, St. Benedict's College
<i>Thesis: A study of the tastes of ninth grade girls in reading.</i> | Education ✓ |
| ARTHUR ANDREW AZLEIN, Effingham, A.B. 1938, University of Kansas
<i>Thesis: The tariff and the Alabama claims.</i> | History ✓ | CLARENCE CRAIG, Lawrence, A.B. 1932, University of Kansas
<i>Thesis: Technological unemployment theory, 1928-1938.</i> | Economics ✓ |
| EDGAR H. BEAHM, Bison, A.B. 1937, University of Kansas
<i>Thesis: Experimental studies on trichinosis.</i> | Bacteriology ✓ | DOROTHY E. CRANE, Leavenworth, A.B. 1922, University of Kansas
<i>Thesis: A study of scores in biology tests.</i> | Education ✓ |
| CLIFFORD EARL BOWLBY, Belle Plaine, A.B. 1931, Friends University
<i>Thesis: A comparative study of the high schools of Sumner County, Kansas, 1936-1938.</i> | Education ✓ | ARTHUR L. CUNKLE, Fort Smith, Ark., A.B. 1938, Arkansas State Teachers College, Conway
<i>Thesis: The concept of property in the general property tax.</i> | Economics ✓ |
| MARIAN LUELLE BROCKWAY, Topeka, A.B. 1934, Washburn College
<i>Thesis: A study of the geographical, occupational, and political characteristics of Congressmen, 1800-1919.</i> | Sociology ✓ | CATHERINE C. DE TAR, Ottawa, B.S. 1932, Ottawa University
<i>Thesis: Inscribed, circumscribed, escribed and nine-point circles of certain families of triangles.</i> | Mathematics ✓ |
| GIRARD T. BRYANT, Topeka, Ph.B. 1926, University of Chicago
<i>Thesis: The Populist movement and the Negro.</i> | History ✓ | FLORENCE EILEEN DILL, Lawrence, A.B. 1936, University of Kansas
<i>Thesis: Leaf anatomy of some Kansas plants in relation to the environmental conditions, with special reference to the water problem.</i> | Botany ✓ |
| JOHN BULLER Jr., Larned, A.B. 1928, Bethel College
<i>Thesis: To discover what policies of business and financial administration of athletics are being employed in high schools of 200 to 600 students in the Seventh Congressional District of Kansas.</i> | Education ✓ | DONALD S. DIXON, Lawrence, A.B. 1937, University of Kansas
<i>Thesis: A survey of the defects of speech in the elementary grades of the public schools of Lawrence, Kansas.</i> | Psychology ✓ |
| MARY BUNCE, Warrensburg, Mo., A.B., B.S. 1937, Central Missouri State Teachers College
<i>Thesis: A critical study of William Morris' Sigurd the Volsung.</i> | English ✓ | ALBERTA DOYLE, Douglass, A.B. 1932, University of Kansas
<i>Thesis: The progressive movement in the Republican party in Kansas, 1902-1917.</i> | History ✓ |
| CHARLES ALBERT BURGTORF, Thayer, A.B. 1925, Baker University
<i>Thesis: An analytical treatment of isogonal conjugate curves.</i> | Mathematics ✓ | SISTER TERESA ANN DOYLE, Atchison, A.B. 1930, St. Benedict's College
<i>Thesis: Catholicism in the poetry of Richard Crashaw, seventeenth-century religious poet.</i> | English ✓ |
| WINNIE HAROLD CARTER, Coffeyville, A.B. 1922, Ottawa University
<i>Thesis: A comparative study of the ninth grade students of the Lawrence, Kansas, high schools.</i> | Education ✓ | JOHN FREDERICK EBELKE, Providence, R.I., A.B. 1937, Brown University
<i>Thesis: Drei Studien zur Geschichte der romantischen Konversionen.</i> | German ✓ |
| PERCY CARUTHERS, Kansas City, A.B. 1933, University of Kansas
<i>Thesis: An analysis of intestinal parasites of the dog (Canis familiaris) to determine whether Echinococcus granulosa or Multiceps multiceps is found in this locality.</i> | Zoology ✓ | WILLIAM DEWITT FIELD, Lawrence, A.B. 1936, University of Kansas
<i>Thesis: A manual of the butterflies and skippers of Kansas (Lepidoptera, Rhopalocera).</i> | Entomology ✓ |
| ETHEL C. CLARK, Montrose, A.B. 1921, University of Kansas
<i>Thesis: Motivating factors in the development of the Workers' Education Movement in the United States.</i> | Sociology ✓ | BURTON REUBEN FISHER, Brooklyn, N.Y., A.B. 1938, Yale University
<i>Thesis: An approach to competition and cooperation.</i> | Psychology ✓ |
| LOUISE CLARKE, Lecompton, A.B. 1934, University of Kansas
<i>Thesis: A critical survey of the educational possibilities of the inmates at the State Training School, Winfield, Kansas.</i> | Education ✓ | OMER MARVIN FUNK, Seneca, LL.B. 1935, A.B. 1937, University of Kansas
<i>Thesis: Development of the functions of the Kansas Corporation Commission.</i> | Political Science ✓ |
| ADA OPALINE COFFEY, Joplin, Mo., A.B. 1932, University of Kansas
<i>Thesis: Joseph Conrad: A dictionary of characters.</i> | English ✓ | HIRAM L. GORDON, Wichita, A.B. 1937, University of Wichita
<i>Thesis: Sherman's March, November 15, 1864-April 18, 1865.</i> | History ✓ |
| LOUIS COHEN, Topeka, B.S. 1935, Washburn College
<i>Thesis: Blood pressure changes following brain ischemia in dogs.</i> | Physiology ✓ | EZRA RODERICK GREER, Kansas City, A.B. 1937, University of Kansas
<i>Thesis: A study of the Genus Pelocoris (Naucoridae).</i> | Entomology ✓ |
| FLOYD I. COLLINS, Argonia, A.B. 1927, Baker University
<i>Thesis: An experiment in personality improvement of high school seniors.</i> | Education ✓ | WILLIAM HENRY GRIFFITH, Bucyrus, A.B. 1921, University of Kansas
<i>Thesis: A study of the salary, training, and tenure of administrators and teachers of the smaller accredited high schools of Kansas, for 1936-37, and a comparison with the year 1926-27.</i> | Education ✓ |

- ANNA EMMA FLORENCE HEDGES, Coffeyville, A.B. 1930, University of California
Thesis: A critical study of three hundred plasmodial blood smears. Zoology
- LEON WILBURNE HEPNER, Coffeyville, A.B. 1938, University of Kansas
*Thesis: Revision of the Genus *Aligia* in America north of Mexico (Homoptera, Cicadellidae).* Entomology
- ELMER LLOYD HILL, Lawrence, A.B. 1936, University of Kansas
Thesis: Studies on the atypical fecal flora of a normally healthy individual. Bacteriology
- ALBERT L. HUNSICKER, Coffeyville, A.B. 1937, University of Kansas
Thesis: The theory and validation of the University of Kansas personality scale. Education
- LEONORA LOUISE JENSEN, Lawrence, A.B. 1935, University of Southern California
Thesis: An analysis of trade union structure with particular reference to the craft and industrial forms. Economics
- JOHN ENOCH JOHNSON, Osage City, A.B. 1936, University of Kansas
Thesis: Some derivatives of 2-amino pentane. Chemistry
- ROBERT HOWARD JORDAN, Kansas City, A.B. 1938, University of Kansas
*Thesis: Intravital technique used in studies on movement and turning of sperm in *Chortophaga viridifasiata*.* Zoology
- ORLAND A. KROBER, McPherson, B.S. 1931, Greenville College
Thesis: On the action of thio acids on the phenacyl thiocyanates the synthesis of 2-thio-4-aryl thiazolines. Chemistry
- EDRA PERCIA LAKE, Atchison, A.B. 1917, Midland College
Thesis: The friendship of Henry Cabot Lodge and Theodore Roosevelt. History
- JOSEPH HOWARD LANE, Jr., Kansas City, Mo., A.B. 1936, University of Kansas City
Thesis: The stratigraphy and fauna of the Winterset limestone of Jackson County, Missouri. Geology
- MARTIN JOSEPH MALONEY III, Lawrence, A.B. 1937, University of Kansas
Thesis: Maxwell Anderson's debt to Shakespeare. English
- PAUL McCABE MAXWELL, Carbondale, A.B. 1920, Baker University
Thesis: A study in free reading in a small Kansas high school. Education
- WILBUR A. McELROY, Denison, B.S. 1931, McPherson College
Thesis: A survey of attitudes of rural school board members toward certain basic school problems. Education
- E. D. MEACHAM, Lorraine, B.S. 1917, Grinnell College
Thesis: A plan of consolidation for the rural schools of Ellsworth County, Kansas. Education
- EDWIN FREDERICK MENZE, Lawrence, B.S. Educ. 1937, University of Kansas
Thesis: Gerhart Hauptmann's religious development. German
- ANNA CATHARYNE MOHLER, Wichita, A.B. 1922, McPherson College
Thesis: Non-news matter in Kansas weekly newspapers. Journalism
- BESSIE ELLEN MOORE, Wakarusa, A.B. 1935, Washburn College
Thesis: Life and work of Robert Simerwell. History
- NOAH WEBSTER MOORE, Jr., Lawrence, A.B. 1937, University of Kansas
Thesis: The non-slaveholding West and the Mexican War, 1846-1848. History
- A. THEODORE MUELLER, Enid, Okla., A.B. 1932, Bethel College
Thesis: Standardized accounting, auditing, and reporting for the municipalities of the State of Kansas. Economics
- OTIS JESSE MUMAW, Onaga, A.B., B.M., 1931, Washburn College
Thesis: The provision of facilities and some other aids for the teaching of music in the high schools of Osage County, Kansas, 1937-38. Education
- GEORGE LOREN NORRIS, Olathe, A.B. 1932, University of Kansas
Thesis: Some cultural and antigenic characteristics of eighty-four strains of dysentery bacilli from Kansas, with their distribution in the state. Bacteriology
- KERMIT EDWARD OPPERMAN, Lawrence, A.B. 1933, University of Kansas
Thesis: The political career of Senator William Alexander Harris. History
- ESTHER PANKRATZ, Moundridge, A.B. 1928, Bethel College
Thesis: A study of four German and four English versions of the Tannhauser Legend. English
- ELSIE RENA PENFIELD, Arkansas City, A.B. 1933, University of Kansas
Thesis: Corrective and remedial reading in eleventh grade English classes (with case studies). Education
- EDNA JANE PENNEY, Grant City, Mo., A.B. 1933, University of Kansas
Thesis: Italy as a haven for English poets of the nineteenth century. English
- ALBERT ELLSWORTH PUGH, Kansas City, A.B. 1927, Ohio State University
Thesis: Determination of gastric acidity in situ with the glass electrode. Physiology
- MILDRED PURSELL, Lawrence, A.B. 1936, University of Kansas
*Thesis: Photodynamic reactions of the protozoan *Chaos chaos* to the effects of the fluorescent dye uranine.* Zoology
- RUTH I. REGIER, Newton, A.B. 1937, Bethel College
Thesis: A survey of patronage in the development of the professional musician. Music
- ROSS MARSHALL ROBERTSON, Lawrence, A.B. 1937, University of Kansas
Thesis: Monopsony and monopsonistic markets. Economics
- CORREL NELSON ROBINSON, Jr., Independence, A.B. 1936, University of Kansas
Thesis: Studies of benzthiazoles and aromatic thiocyanates prepared by direct thiocyanogenation. Chemistry
- HOWARD G. ROUNDS, Ottawa, A.B. 1938, Ottawa University
Thesis: A guidance program for high school seniors. Education
- WILLIAM WALTER RUSSELL, Lawrence, A.B. 1932, Kansas State Teachers College of Pittsburg
Thesis: A study of the achievement of rural and urban ninth grade students in Lawrence, Kansas Education
- CHESTER A. SARGENT, Portis, A.B. 1927, Southwestern College
Thesis: A study of the six-year high school in Kansas. Education
- CLARA ELIZABETH SCHURMAN, McPherson, A.B. 1937, McPherson College
Thesis: Huguenot settlements in Latin America. History
- LOIS ANITA SEAMANS, Lawrence, A.B. 1936, University of Kansas
*Thesis: Growth ratios for *Blattella Germanica*.* Entomology
- CARL H. SENTER, Ottawa, B.S. 1929, Ottawa University
Thesis: Electro-deposition of zinc in the presence of organic addition agents. Chemistry
- FRED LEROY SETTLES, Ottawa, B.S. 1927, Ottawa University
Thesis: A study of attendance in the one-teacher schools of Franklin County, Kansas, for the first four months of the school year, 1938-1939. Education

CHARLES L. SHEPARD, Lawrence, A.B. 1933, University of Kansas
Thesis: The Genus Ormenis (Fulgoridae) in North America north of Mexico. Entomology ✓

CURT SIEMENS, Moundridge, A.B. 1930, Bethel College
Thesis: A study to determine the per cent of the total tax dollar devoted to education in Kansas. Education ✓

JOHN WILLIAM SKIDMORE, Bronson, B.S. 1929, Ottawa University
Thesis: Some administrative uses of tests. Education ✓

ALICE ELIZABETH SMITH, Lawrence, A.B. 1937, University of Kansas
Thesis: A study of the cellular proliferation associated with lesions produced by the larvae of Taenia pisiformis in the cotton-tail rabbit. Zoology ✓

REGINA R. STEIMEL, Emporia, A.B. 1937, University of Kansas
Thesis: The relation of precipitin and anaphylactic sensitizer: passive sensitization with specific precipitates. Bacteriology ✓

DOROTHY JEAN STEPHENSON, Lawrence, A.B. 1938, University of Kansas
Thesis: The Jeanne d'Arc of Peguy. French ✓

KATHERINE KENYON STEWART, Hurlan, A.B. 1931, Washburn College
Thesis: French criticism of four American poets—Poe, Whitman, Dickinson, Robinson. English ✓

HARRY M. SWIFT, Lawrence, A.B. 1936, College of Emporia
Thesis: Administration of agricultural functions in Kansas with particular reference to the Board of Agriculture. Political Science ✓

OTTO W. TIEMEIER, Lincolnville, A.B. 1937, University of Kansas
Thesis: A survey of repaired bone injuries in birds. Zoology ✓

CLYDE W. TOMBAUGH, Burdett, A.B. 1936, University of Kansas
Thesis: A study of the observational performance of the William Pitt 27-inch telescope. Astronomy ✓

HENRY VAN SWEARINGEN, Horton, A.B. 1936, University of Kansas
Thesis: An experimental remedial reading project for college students at the University of Kansas. Education ✓

GEORGE RUBLE WAGGONER, Wagoner, Okla., A.B. 1936, University of Kansas
Thesis: Characterization in Trollope's Barsetshire and Parliamentary novels. English ✓

ROBERT FENCIL WALLACE, Kansas City, Mo., A.B. 1934, University of Kansas
Thesis: The Federal Reserve Bank of Kansas City, 1914-1921. Economics ✓

GEORGE MURLIN WELCH, Merriam, A.B. 1929, Baker University
Thesis: Border warfare in southeastern Kansas, 1856-1859. History ✓

MAX D. WHEATLEY, Kansas City, A.B. 1937, University of Kansas
Thesis: The effect of autolyzed Trichinella spiralis tissue on trichina larvae developing in a host. Zoology ✓

RAYMOND E. WHITLA, Lawrence, A.B. 1932, College of Emporia
Thesis: The geology and ore deposits of the Lost Lake District, Boulder County, Colorado. Geology ✓

DeLOSS E. WINKLER, Atchison, A.B. 1936, University of Kansas
Thesis: The exhaustive chlorination of n-pentane. Chemistry ✓

LOUISE ARLINE YEOMANS, Lawrence, A.B. 1937, University of Kansas
Thesis: A critical study of Turgenev. English ✓

ALFRED RAYMOND YOUNG, Anthony, B.S. 1929, Baker University
Thesis: Appraisal of thirty rural schools of Atchison County, Kansas. Education ✓

SISTER M, MAXINE ZELLER, Atchison, A.B. 1932, Mount St. Scholastica College
Thesis: Solubility relations in the system plumbic acetate-sodium acetate-acetic acid at 30°C. Chemistry ✓

89

Master of Science

HARRY FINCH NARAMORE, Lawrence, B.S.E.E. 1938, University of Kansas
Thesis: Single-phase induction motor theories. Electrical Engineering

1

Master of Music

MAXINE LANE ROCHE, Holton, B.M. 1935, University of Kansas
Thesis: A historical survey of vocal teaching. Voice

WILMA STONER WRAY, Lawrence, B.M. (in piano) 1934, B.M. (in organ) 1936, University of Kansas
Thesis: The organ fugue (from 1750 to 1900). Organ

2

Master of Music Education

ROBERT LeROY BRIGGS, Tulsa, Okla., B.M.E. 1938, University of Kansas

CLARISSA LEONA GRISWOLD, Rossville, B.S. Educ. 1929, Fort Hays Kansas State College

D. JAMES FLORY, Ottawa, B.S.Mus. 1933, Kansas State Teachers College of Emporia

ETHEL ELIZABETH RUPPENTHAL, Lawrence, A.B. 1929, Colorado State Teachers College; B.M.E. 1931, University of Kansas
Thesis: The social significance of music.

4

Master of Science in Education

- AULETTE DESDEMONA ABERNATHY, Kansas City, B.S.Educ. 1931, University of Kansas
Thesis: A study of the socio-economic status and comprehension of high school pupils.
- MINNIE M. BAKER, Independence, Mo., B.S.Educ. 1930, University of Kansas
Thesis: The effects of the study of elementary bookkeeping on speed and accuracy in the use of the fundamental processes of arithmetic and in problem solving.
- ERNEST EDMUND BARNARD, Sabetha, B.S.Educ. 1933, University of Kansas
Thesis: The status of the elementary school teachers of Jefferson County, Kansas, for 1929-30, 1933-34, and 1937-38.
- EARL RAY BEVAN, Independence, B.S.Educ. 1929, Kansas State Teachers College of Emporia
Thesis: A study of some personality deviations of delinquent and non-delinquent boys.
- JEAN COWAN BLOOM, Emporia, B.S.Educ. 1934, University of Kansas
Thesis: The interview as a technique in adjusting the emotional factors affecting the efficiency of classroom teachers.
- HELEN JOY BOLIN, Kansas City, Mo., B.S.Educ. 1930, Northwest Missouri State Teachers College
Thesis: A study of the measurement of reading abilities of thirty-two ungraded class children.
- GENEVIEVE SHEPARD CAIN, Lawrence, Ph.B. 1924, Missouri Valley College
Thesis: Sociological material found in five current magazines.
- C. D. CALDWELL, Larned, B.S.Educ. 1929, Kansas State Teachers College of Pittsburg
Thesis: The history of the development of education in the community of Larned and Pawnee County, Kansas.
- NAOMI LORENE CAMPBELL, Lawrence, B.S.Educ. 1938, University of Kansas
Thesis: Case studies of nine pre-delinquent girls.
- W. LAWRENCE CANNON, Kansas City, Mo., A.B. 1928, Central College
Thesis: A study of the accidents and safety teaching in Southwest High School, Kansas City, Missouri.
- JOHN ELIHU COLE, Winchester, B.S.Educ. 1927, Kansas State Teachers College of Emporia
Thesis: A survey of the status of science instruction in the high schools of the third class cities in Kansas.
- DESSE BERNICE COX, Hot Springs, Ark., B.S.Educ. 1926, University of Kansas
Thesis: A study of the word difficulty of George Eliot's "Silas Marner".
- ROBERT W. FORBES, Cherryvale, B.S.Educ. 1929, Kansas State Teachers College of Emporia
Thesis: The relationship between the ability to recall and the ability to infer when biological materials are used as the situations.
- KENNETH RAY HINKHOUSE, Caldwell, B.S.Educ. 1925, Fort Hays Kansas State College
Thesis: The transportation problem in a consolidated school in Kansas, 1936-1938.
- MARTIN ORVILLE JOHNSON, Rossville, B.M. 1934, Horner Institute
Thesis: A study of choral music methods in third class cities of Kansas.
- MARIAN GERTRUDE LANE, Lawrence, B.S.Educ. 1934, University of Kansas
Thesis: Factors in the prediction of the reading ability of first grade children
- REBEKAH LEIBENGOOD, Lawrence, B.S.Educ. 1934, University of Kansas
Thesis: The value of making collections by pupils in zoology.
- LEWIS ALFRED MARTIN, Independence, B.S.Educ. 1938, Kansas State Teachers College of Emporia
Thesis: The secondary school principal and the community.
- LILLIAN PETERSON McCULLOUGH, Lawrence, B.S.Educ. 1933, University of Kansas
Thesis: A study of attainment in physical education and other subjects made by high school girls.
- LEO REYNOLDS MILLER, Kansas City, Mo., B.S.Educ. 1935, Teachers College of Kansas City
Thesis: An experiment in remedial reading with mentally retarded pupils.
- MARJORIE SIMPSON MUNT, Los Angeles, Calif., B.S.Educ., 1930, University of Kansas
Thesis: A handbook of health and disease for students of secondary schools.
- HULDA J. PEARSON, Kansas City, B.S.Educ. 1932, University of Kansas
Thesis: A study of retarded pupils in the seventh grade.
- KEITH ALLEN ROBERTS, Denison, B.S.Educ. 1935, University of Kansas
Thesis: Attitudes of teachers in service toward their practice teaching course.
- FERDINAND A. SMETHERS, Virgil, B.S.Educ. 1930, Kansas State Teachers College of Emporia
Thesis: A study of the relationship between scores on behavior rating scales and actual behavior problems.
- RAYMOND W. SWANSON, Randolph, B.S.Educ. 1938, University of Kansas
Thesis: Health knowledge tests.
- BERNEC E. TERRELL, Alton, B.S.Educ. 1933, Fort Hays Kansas State College
Thesis: Historical development of the public schools in Rawlins County.
- EMMA VANOUS, Kansas City, B.S.Educ. 1933, University of Kansas
Thesis: A study of the physical needs of junior high school girls.
- MARGARET E. VanSCOYOC, Cimarron, B.S.Educ. 1925, Kansas State Teachers College of Emporia
Thesis: A study of two methods of practice procedure in beginning typewriting in a small high school in Kansas.

28

Master of Education

- LAVERNE ALDEN BROOKS, Wichita, A.B. 1932, University of Wichita
- PAUL BAIRD COOPER, Gridley, B.S.Educ. 1920, Kansas State Teachers College of Emporia
- IDA MARIE GOOD, Perry, B.S.Educ. 1930, Kansas State Teachers College of Emporia
- JOHN JAMES GREENLEE, Americus, B.S.Educ. 1924, Kansas State Teachers College of Emporia
- HAROLD A. HOEGLUND, LeRoy, A.B. 1932, Park College
- WILLIAM HAROLD IRELAND, Wellsville, B.S. 1925, Ottawa University
- CHARLES P. LUCAS, Cadiz, Ohio, B.S.Educ. 1933, Wilberforce University
- ALBERT D. OETTING, Raytown, Mo., B.S.Educ. 1927, Central Missouri State Teachers College
- MENDELL DWIGHT REICHART, Valley Falls, B.S.Educ. 1931, Kansas State Teachers College of Emporia
- CLEO W. RICE, Lamont, A.B. 1931, College of Emporia
- FRANK E. STRICKLER, Dighton, B.S.Educ. 1922, Kansas State Teachers College of Emporia

11

Master of Business Administration

GEORGE ARTHUR COOKINHAM, Topeka, B.S.Bus. 1938, University of Kansas

Thesis: Personal finance with particular reference to its position in commercial banking.

DONALD MAX GAMET, Ottawa, B.S. 1938, Fort Hays Kansas State College

Thesis: Selected problems arising from consolidated balance sheet construction.

H. BRUCE GRIMES, Ottawa, B.S.Bus. 1937, University of Kansas

Thesis: The possible elimination of constitutional exemptions from the Federal Income Tax.

JEROME J. KESSELMAN, Lawrence, B.S.Bus. 1936, University of Kansas

Thesis: An analysis of controversial accounts appearing on industrial financial statements.

WALTER B. MEIGS, Lawrence, B.S.Bus. 1935, University of Kansas

Thesis: The movement toward separation of ownership and control in the automobile industry.

RICHARD GEORGE VOGEL, Tulsa, Okla., B.S.Com. 1931, Kansas State College

Thesis: History of the Kansas sales tax.

6

Electrical Engineer

MYRL RAE DOUGLASS, Edgewood, Penn., B.S.E.E. 1929, University of Kansas

Thesis: A photometric standard and focusing device for search-light type railway signals.

CHARLES VERNE WADDINGTON, Wichita, B.S. 1912, University of Kansas

Thesis: The development of the Kansas Gas and Electric Company system from an engineering point of view.

2

Civil Engineer

CALVIN EUGENE PERKINS, Stillwater, Okla., B.S.C.E. 1927, University of Kansas

Thesis: Choosing pumping equipment for the Bartlesville water plant.

1

Mechanical Engineer

HARRY SHIPP COLEMAN, Pittsburgh, Penn., B.S. 1909, University of Kansas

Thesis: Engineering factors involved in planning, erecting and equipping the new building of Mellon Institute of Industrial Research.

1

Doctor of Philosophy

LAWRENCE EDWARD FORMAN, Detroit, Mich., B.S. 1932, M.S. 1933, B.S.Educ. 1934, North Dakota Agricultural College

Thesis: Some reactions of 1, 3-diamino-2-propanol.

Chemistry ✓

McFREEMAN HYDE, Lawrence, A.B. 1918, William Jewell College; A.M. 1927, University of Missouri

Thesis: Ability grouping: A device for the supervision of instruction.

Education ✓

THAD GERALD McLAUGHLIN, Valley Center, A.B. 1935, University of Wichita

Thesis: The pegmatite dikes of the Bridger Mountains, Wyoming.

Geology ✓

JAMES GARTRELLE PHILLIPS, Lawrence, A.B. 1930, M.S. 1933, University of Oklahoma

Thesis: Some changes in the calcium ion concentration of the blood in conditions of hypercalcemia produced by viosterol, parathyroid extract and intravenous injection of a soluble calcium salt.

Physiology ✓

MORGAN J. RARICK, Lawrence, A.B. 1932, University of Kansas

Thesis: Part I. The reduction of aromatic nitro compounds with sodium alcoholates.
Part II. A precision pressure regulating unit.

Chemistry ✓

BYRON CHARLES SARVIS, Hastings-on-Hudson, N.Y., A.B. 1928, A.M. 1931, University of Kansas

Thesis: A clinical study of the developmental aspects of child thought.

Psychology ✓

GILBERT ULMER, Lawrence, A.B. 1931, Butler University; A.M. 1933, University of Kansas

Thesis: Teaching geometry to cultivate reflective thinking; an experimental study with 1239 high school students.

Education ✓

CHARLES WOLFSON, Lawrence, A.B. 1929, University of Kansas

Thesis: A contribution to the technique of potential difference measurement on single-celled organisms.

Zoology ✓

8-153-1231

This official list contains the names of 1109 different persons, to whom are awarded 1231 degrees and certificates, the largest in the history of the University. In addition to Kansas, 22 other states and the District of Columbia are represented.

Scholastic Honors-Prizes

Fellowships and Scholarships at the University of Kansas

Appointments to Fellowships and Scholarships in the Graduate School for the year 1939-40 have been made as follows:

University Fellowships

- WILLIAM M. BUSH, B.S., 1938, Washburn College, *Physics*.
WILLIAM DEWITT FIELD, A.B. 1936, A.M. 1938, University of Kansas, *Entomology*.
J. MARVIN HAWKER, B.S. Educ. 1928, M.S. 1935, Kansas State Teachers College of Pittsburg, *Education*.
EUGENE A. RAMSKILL, B.S. 1935, Washburn College; A.M. 1937, University of Kansas, *Chemistry*.

University Scholarships

- ELVERSON EARL BAKER, A.B. 1939, University of Kansas, *Chemistry*.
JESSIE MARIE BRADBURY, A.B. 1939, University of Kansas, *French*.
MARY BUNCE, A.B., B.S. 1937, Central Missouri State Teachers College; A.M. 1939, University of Kansas, *English*.
GERALD EDWARD COLE, B.M., 1939, University of Kansas, *Music*.
HAROLD EDWARD ENGLE, B.S. 1939, Kansas State College of Agriculture and Applied Science, *History*.
EDWIN GREENWOOD MARHOFER, A.B. 1937, A.M. 1939, Kansas State Teachers College of Pittsburg, *Chemistry*.
ROBERT EMMETT PYLE, A.B. 1938, University of Kansas, *French*.
ALAN BENJAMIN SHOWALTER, B.S. Educ. 1938, B.S. 1939, Arkansas State College, *Physics*.

Edwin Emery Slossom Scholarship in Science

- WILFRED M. GOOD, A.B. 1936, A.M. 1938, University of Kansas, *Physics*.

Ida M. Hyde Scholarship

- NANCY LEMING, A.B. 1938, Smith College, *Bacteriology*.

Fellowships and Scholarships In Other Institutions

The following graduates of the University of Kansas have received fellowships at other institutions for the year 1939-1940:

- ROBERT STANLEY ALEXANDER, B. S. 1936, Washburn College; A.M. 1938, University of Kansas, George Leib Harrison Fellowship in Astronomy at the University of Pennsylvania.
LAWRENCE PRESTON BIRNEY, A.B. 1939, University of Kansas, Government Internship at the National Institute of Public Affairs, Washington, D.C.
DOROTHY BLUE, B.F.A. 1939, University of Kansas, Exchange Fellowship to Stockholm, Sweden, sponsored by Kappa Kappa Gamma national sorority working with the American Scandinavian Foundation.
STEWART CLARE, A.B., 1935, University of Kansas; M.S. 1937, Iowa State College, University Fellowship in Zoology at the University of Chicago.
HERBERT L. KRAUSS, B.S.E.E. 1939, University of Kansas, Thomas Alva Edison Scholarship at Yale University.
CHARLES EARL RICKART, A.B. 1937, A.M. 1938, University of Kansas, University Fellowship in Mathematics at the University of Michigan.

WILLIAM BUELL SCHAFFRATH, A.B. 1936 Cornell University; A.M. 1938, University of Kansas, University Fellowship in Germanic Languages at Cornell University.

ELDON BLAKE SMITH, A.B. 1939, University of Kansas, Government Internship at the National Institute of Public Affairs, Washington, D.C.

Academic Honors

- HONORS in English to BILL READ of Iola.
HONORS in English to NORMAN REHG of Eldorado, Kansas.
HONORS in English to HELEN RICE of Lawrence, Kansas.
HONORS in Political Science to LAWRENCE PRESTON BIRNEY of Bucklin and ELDON BLAKE SMITH of Kansas City, Kan.

Interneships

- RAYMOND B. ANDERSON, Santa Barbara Gen. Hosp., Santa Barbara, Calif.
PAUL S. ANDRESON, Albany Hospital (Albany Medical College) Albany, N.Y.
WILLET C. ASLING, Huntington Mem. Hosp., Pasadena, Calif.
JAMES DALE BENNETT, University of Kansas Hospitals, Kansas City, Kan.
ROBERT J. BOODY, University of Kansas Hospitals, Kansas City, Kan.
DONALD E. BUX, St. John's Hospital, Tulsa, Okla.
WOODROW M. CAMPION, Cleveland City Hospital, Cleveland, Ohio.
KARL A. CATLIN, Bethany Hospital, Kansas City, Kan.
RAY A. CLARK, St. Joseph Hospital, Kansas City, Mo.
GUY W. CRAMER, St. Margaret's Hospital, Kansas City, Kan.
VERNON DALE CUSHING, Ancker Hospital, St. Paul, Minn.
CHRIS G. DAVIS, Trinity Lutheran Hospital, Kansas City, Mo.
HUGHES W. DAY, Presbyterian Hospital, Denver, Colo.
JACK DEMOTT, Charity Hospital, (Louisiana State U. Medical Center) New Orleans, La.
BERNARD DONNELLY, University of Kansas Hospitals, Kansas City, Kan.
OLIVER EITZEN, St. Mary's Group of Hospitals (St. Louis University Medical School), St. Louis, Mo.
LAWRENCE FILKIN, Atlantic City Hospital, Atlantic City, N.J.
LOUIS M. FORMAN, St. Francis Hospital, Wichita, Kan.
PAULINE GARBER, Huron Road Hospital, East Cleveland, Ohio.
RICHARD GREER, Hurley Hospital, Flint, Mich.
THOMAS ROBIN HOOD, Akron City Hospital, Akron, Ohio.
KENNETH R. HUNTER, San Bernardino Co. Charity Hosp., San Bernardino, Calif.
F. HAROLD JAMES, St. Joseph's Hospital, Tacoma, Wash.
FRANKLIN JOHNSON, St. Luke's Hospital, Jacksonville, Fla.
TOM KENDIG, Henry Ford Hospital, Detroit, Mich.
ARTHUR C. LADD, Grasslands Hospital, Valhalla, New York.
HENRY WALLACE LANE, University of Kansas Hospitals, Kansas City, Kan.
CARLETON H. LEE, St. Margaret's Hospital, Kansas City, Kan.
JOHN ALEXANDER MACLEAN, Medical Center, Jersey City, N.J.
STANTON MCCOOL, San Diego Co. Gen. Hospital, San Diego, Calif.
LEO FRANCIS MCKEE, Elizabeth Hospital, Elizabeth, N.J.
JOE TONY MCKIBBEN, Municipal Hospital, Hartford, Conn.
MYRON G. MESSENHEIMER, Colorado General Hospital (University of Colorado School of Medicine), Denver, Colo.
PAUL MILLIGAN, St. Margaret's Hospital, Kansas City, Kan.

CLARK H. MILLIKAN, *St. Luke's Hospital*, Cleveland, Ohio.
 EDWARD P. MININGER, *Cleveland City Hospital*, Cleveland, Ohio.
 DONALD D. MEYER, *St. Luke's Hospital*, Kansas City, Mo.
 RODGER MOON, *State of Wisconsin General Hospital (University of Wisconsin Medical School)*, Madison, Wisc.
 RAYMOND L. MORROW, *St. Margaret's Hospital*, Kansas City, Kan.
 FRANCIS J. NASH, *Kansas City General Hospital*, Kansas City, Mo.
 ARNOLD F. NOTHNAGEL, *Harper Hospital*, Detroit, Mich.
 GEORGE G. OLEEN, *City Hospital*, Winston-Salem, N. C.
 FRANCIS E. O'NEILL, *Robt. B. Green Memorial Hospital*, San Antonio, Texas.
 RAYMOND L. PENDLETON, *University of Kansas Hospitals*, Kansas City, Kan.
 CECIL E. PATTERSON, *St. Margaret's Hospital*, Kansas City, Kan.
 RAYMOND D. PRUITT, *University of Kansas Hospitals*, Kansas City, Kan.
 JAMES A. REID, *St. Luke's Hospital*, St. Louis, Mo.
 CORBIN ROBINSON, *St. Francis Hospital*, Wichita, Kan.
 EDGAR SERERES, *DePaul Hospital*, St. Louis, Mo.
 J. HAROLD SHANKLIN, *Trinity Lutheran Hospital*, Kansas City, Mo.
 ED. E. SHIRCLIFF, *Santa Barbara General Hospital*, Santa Barbara, Calif.
 NORMAN C. SIEBERT, *Kansas City General Hospital*, Kansas City, Mo.
 HARRY STATLAND, *University of Kansas Hospitals*, Kansas City, Kan.
 CHAS. STEPHEN STOTTS, *Kansas City General Hospital*, Kansas City, Mo.
 O. DWIGHT SWAN, *Roper Hospital (Medical College of the State of South Carolina)*, Charleston, S.C.
 CLAIR LEO SWANN, *St. Joseph Hospital*, Louisville, Ky.
 JACK T. TERRY, *St. Margaret's Hospital*, Kansas City, Kan.
 BURL V. THOMPSON, *Kansas City General Hospital*, Kansas City, Mo.
 MARY THOMPSON, *Emanuel Hospital*, Portland, Oregon.
 HERBERT TRACY, *St. Louis City Hospital*, St. Louis, Mo.
 JOHN W. TURNER, *St. Luke's Hospital*, Jacksonville, Fla.
 DICK H. UNDERWOOD, *St. Louis City Hospital*, St. Louis, Mo.
 GORDON VOORHEES, *University of Kansas Hospitals*, Kansas City, Kan.
 FRED E. WADE, *St. Joseph Hospital*, Kansas City, Mo.
 EVERAL M. WAKEMAN, *Detroit Receiving Hospital*, Detroit, Mich.
 BYRON WALTERS, *St. John's Hospital*, Cleveland, Ohio.
 ISADORE WAXSE, *Jewish Hospital*, Cincinnati, Ohio.
 JEAN BROWN WILLOUGHBY, *Roper Hospital (Medical College of the State of South Carolina)*, Charleston, S. C.
 HAROLD V. WOODS, *Nashville General Hospital*, Nashville, Tenn.
 LISLE M. WYATT, *Madison General Hospital*, Madison, Wisc.

Residencies

Residencies and appointments at the University of Kansas Hospitals for 1939-40 have been awarded as follows:

MAX S. ALLEN, Assistant Resident in Medicine.
 JAMES L. BEAVER, Resident in Surgery.
 JOHN BOWSER, Resident in Roentgenology.
 HARRY L. DOUGLAS, Assistant Resident in Medicine.
 MERRILL W. ETZENHOUSER, Assistant Resident in Pathology.
 WILBUR EVANS, Assistant Resident in Out-patient Department.
 JOHN CHARLES FARIS, Assistant Resident in Surgery.

HUBERT M. FLOERSCH, Resident in Gynecology.
 GLEN FRANKLIN, Assistant Resident in Medicine.
 GRETCHEN GUERNSEY, Assistant Resident in Anesthesia.
 THOMAS M. JOHNSON, Assistant Resident in Surgery.
 FRED MAYES, Resident in Pediatrics.
 FRED MILLS, Assistant Resident in Pathology.
 ROBERT NEWMAN, Assistant Resident in Obstetrics and Gynecology.
 HENRY F. QUINN, Resident in Medicine.
 MELVIN RABE, Assistant Resident in Surgery.
 RAE A. RICHESON, Assistant Resident in Surgery.
 DAVID JAMES STUMP, Resident in Pathology.
 JACK S. TUCKER, Resident in Obstetrics.

Scholarships at the University of Kansas

Scholarships for the Academic Year 1939-1940 have been awarded as follows:

Summerfield Scholarships for a freshman group for the academic year 1939-1940 have been awarded to: JOHN JOE CONARD, Coolidge; JAMES C. DRAPER, Topeka, HOWARD FINK, Winfield; CHESTER GATES, Baldwin; PAUL GILLES, Kansas City; MALCOLM HARNED, Wichita; GEORGE JOHNSON, Oskaloosa; VERLYN NORRIS, Pratt; THOMAS K. OLIVER, Leavenworth; BEN RAGLAND, Hutchinson; HOWARD SELLS, Effingham; WARREN SNYDER, Hutchinson; CARL UNRUH, Pratt; MARK VIESSELMAN, Lawrence; LLOYD WOODBURN, Cleburne.

The Herbert Spencer Hadley Memorial Scholarship to CHARLES W. WARD, Peabody, Kansas, 2nd year law student.

The Porter Scholarship in the School of Medicine to RAYMOND PRUITT of Kansas City, Kansas.

The Arthur Jerome Boynton Memorial Scholarship to J. D. RAMSAY, of Wichita, a junior in the College.

The Lucille Brown Rankin Loan Scholarship in Design to JANE KREHBIEL of Kansas City, Mo., a junior in the School of Fine Arts and MICHAEL F. ANDREWS, of Central City, Pa., a sophomore in the School of Fine Arts.

The Aldie Haver Scholarship to MOYNE W. LICHLYTER of Eldorado, a junior in the College and a pre-medic.

John M. and Nannie A. Lowe Award to IMA MAE GOEHRING of Lawrence, a second year student in the School of Law and JAMES A. WILLIAMS of Sharon Springs, a third year student in the School of Law.

The Friends in Council Loan Scholarship for 1938-1939 to C. H. MULLEN of Marion, a senior in the; College; CECIL STRICKLAND of Fort Dodge, a junior in the School of Engineering and Architecture; ROBERT L. KING of Kansas City, Mo., a senior in the School of Engineering and Architecture; EDNA MAY PARKS of Kansas City, Mo., a junior in the College and ANDREW EDWARD HIBBARD of Toronto, a senior in the College.

Kansas City Alumni Association Loan Scholarship for 1938-1939 to KENNETH RAZAK of Collyer, a senior in the School of Engineering and Architecture.

The D.A.R. (Betty Washington Chapter) Loan Scholarship for 1938-1939 to MARJORIE ALICE WARD of Lawrence, a senior in the School of Fine Arts and BETTY ROSE BUSENBARK of Wetmore, a senior in the School of Pharmacy.

The D.A.R. (Betty Washington Chapter) Loan Scholarship to ADELIENE MARIE BROWN of Alton, an unclassified student in the School of Education, MARY A. GABERDIEL of Hutchinson, a senior in the School of Education and WILMA BROOKS of Yates Center, an unclassified student in the School of Education.

The Round Table Loan Scholarship in honor of Bertha Mix Rice for 1938-1939 to JANE RAUP ROBISON of Timken, a sophomore in the College.

The Pi Lambda Theta Loan Scholarship for 1938-1939 to VIRGINIA SCHOOLING of Lawrence, an unclassified student in the School of Education.

- The Kappa Beta Loan Scholarship for 1938-1939 to ESTHER FAYE ANDERSON of Richland, a sophomore in the College.
- The Lucinda Smith Buchan Memorial Loan Scholarship for 1938-1939 to ISABELLE KLOPPER of Topeka, a student in the Graduate School.
- The American Bankers Association Loan Scholarship to LEO A. HENRICHS of Athol, a senior in the School of Business.
- The David L. Rowlands Memorial Loan Scholarship for 1938-1939 to JOHN A. BACON of Coffeyville, a sophomore in the College.
- The Eliza Matheson Innes Memorial Scholarship to PATRICIA C. GREEN of Lawrence, a junior in the College.
- The George Innes Memorial Scholarship to LUCY E. RUNDELL of Norton, a junior in the School of Business.
- The University Women's Club Scholarship to L. ROSE BALDWIN of Lawrence, a junior in the College.
- A.A.U.W. (Lawrence Branch) Scholarship to ROSEMARY F. JONES of Tonkawa, Oklahoma, a sophomore in the College.
- The American Association of University Women (Junction City Branch) Loan Scholarship to UARDA SHERRY of Burlingame, a junior in the College.
- The Caroline Mumford Winston Memorial Scholarship to NELLA LEE CORWIN of Lawrence, a sophomore in the College.
- W.S.G.A. Scholarship to FRED A. LEE RUNDELL of Norton, a junior in the College.
- The Sarah M. Emery Memorial Scholarship to MARJORIE WILEY of Kinsley, a sophomore in the College.
- The Lathrop Bullene Memorial Scholarship to MABEL LUCILE YEATON of Lawrence, a sophomore in the College.
- The Hulda Ise Memorial Scholarship to DORIS E. NELSON of Salina, a junior in the School of Fine Arts.
- The University Housemothers' Association Scholarship to ETHELYNE M. BURNS of Lawrence, a junior in the School of Fine Arts.
- The Omicron Nu Loan Scholarship to ESTHER FAYE ANDERSON of Richland, a sophomore in the College.
- The Social Welfare Loan Scholarship to LELA M. BROWN of Alton, an unclassified student in the College.
- The Victoria Club Loan Scholarship to JULIE REHG of Eldorado, a student in the Graduate School.
- The Charles S. Griffin Memorial Scholarship to DONALD D. DEFORD of Alton, a junior in the College.
- The Gertrude Bullene Weaver Memorial Loan Scholarship to CARL A. MORITZ of Maryville, a junior in the College and ROBERT E. TREKELL of Wellington, a sophomore in the College.
- The Class of 1911 Loan Scholarship to PAUL FITCH of Minneapolis, a special student in the College.
- The Class of 1912 Loan Scholarship to EDWARD G. WEGENEK of St. Joseph, Missouri, a senior in the College.
- The Class of 1913 (25th Anniversary) Scholarship to MARY MARGARET CAVENESS of Paola, a senior in the College.
- The Class of 1932 Loan Scholarship to CECIL D. STRICKLAND of Fort Dodge, a junior in the School of Engineering and Architecture.
- The Class of 1932 Loan Scholarship for 1938-1939 to CLARENCE WINSLOW of Tonganoxie, a senior in the College.
- The Men's Student Council Loan Scholarship to HUGH HADLEY BRUNER of Lawrence, a sophomore in the College.
- The Goldie R. George Loan Scholarship to LOUIS WEINBERG of Oskaloosa, a sophomore in the School of Fine Arts.
- The Frances Schlegel Carruth Scholarship to the graduate of the Lawrence Memorial High School passing the best examination in two-year entrance German at the University to HERBERT HORNBERGER.
- The Harry C. Thurnau Scholarship for 1938-1939 to ELON LEE HILLER of Hutchinson, a senior in the College.
- The Kansas Council of Teachers of Journalism Loan Scholarship Award to PAUL B. DOBBS of Williamsburg, a junior in the College.
- The Harry C. Thurnau Scholarship to WILLIAM JAMES TRUXAL of Great Bend, a junior in the College.
- The Luella F. Stewart Scholarship in Music to LEONA MAE HALL of Topeka, a junior in the School of Fine Arts.
- The Luella F. Stewart Scholarship in Art to CHARLES R. TOBEREN of New York City, a junior in the School of Fine Arts and ANDREW E. DARLING of Kansas City, Mo., an unclassified student in the School of Fine Arts.
- The George Innes Music Scholarship to EVA RUTH MEINKE of Loring, a junior in the School of Fine Arts.
- The Eliza Parry Memorial Scholarship in Piano to LOIS IRENE WORREL of Atchison, a freshman in the School of Fine Arts.
- The Chandler W. Stephenson Scholarship for 1938-1939 to WINIFRED HILL of Lawrence, a sophomore in the School of Fine Arts.
- The Mu Phi Epsilon Scholarship of Xi Chapter to LUCILE WAGNER of Iola, a graduate student in music.
- The Presser Foundation Scholarship to RUTH SIEG of Greensburg, a freshman in the School of Fine Arts; JUNE J. COCHREN, of Whitney, a freshman in the School of Fine Arts, MARY WAGONER WEINBERG of Oskaloosa, a sophomore in the School of Fine Arts; CURTIS M. JOHNSON of Ft. Collins, Colo., a junior in the School of Fine Arts; EUGENE N. CRABB of McPherson, a freshman in the School of Fine Arts; WILLIAM R. WARD of Norton, a junior in the School of Fine Arts; JOE D. VAN SICKLE of Lawrence, a sophomore in the School of Fine Arts.
- The Breon Fellowship in Research Medicine to DR. JOSEPH LALICH of Kansas City, Kansas.
- The Pi Lambda Theta Loan Scholarship to ETHEL BEAMAN of Moran, an unclassified student in the School of Education and MARTHA LOUISE JACKSON of Bonner Springs, a junior in the School of Fine Arts.
- The Kappa Beta Loan Scholarship to MARY FRANCES JACKSON of Bonner Springs, a sophomore in the School of Fine Arts.
- The Round Table Loan scholarship in honor of Bertha Mix Rice to HELEN HOLLABAUGH of Overbrook, a sophomore in the College.
- The Frank Egbert Bryant Memorial Loan Scholarship to ELSIE LOWELL of Olathe, a junior in the College.
- The Lucinda Smith Buchan Memorial Loan Scholarship to LOIS SCHREIBER of Yates Center, a sophomore in the College and JANE RAUP ROBINSON of Timken, a sophomore in the College.
- The Ingleside Club Loan Scholarship to MARY ELIZABETH JANES of Eureka, a sophomore in the College.
- The Emily V. Berger Memorial Loan Scholarship to GRACE SCHROETTER of Rossville, a sophomore in the College.
- The Tennola Club Loan Scholarship to CRYSTELLE ANDERSON of Tescott, a junior in the College.
- The Holders of Miller Hall Scholarships for the Year 1938-1939 were as follows: MARY MARGARET ANDERSON, Minneapolis; B. JUNE AUMILLER, Topeka; ALICE ULDENE BOYER, Topeka; JESSIE MARIE BRADBURY, Independence; DOROTHY FRANCES CURRY, Topeka; MARGARET JUNE GRAY, Pratt; LEAH LOUISE HIGHFILL, Winfield; ELNORA DORA HILST, Preston; LAURA HOLSTE, Atwood; HELEN ELIZABETH HOUSTON, Kansas City, DOROTHY RUTH HOUSTON, Kansas City, Kan.; GLADYS KATHRYN HUBER, Valley Falls; NELLIE JO HURTGEN, Ruedi, Colo.; BETTY KIMBLE, Mulvane; INA JEANNE KNIGHT, Chapman; VIOLA MAY KNOCHE, Paola; FRED A. LOUISE LAWSON, McPherson; SARAI ELOISE MOHLER, Topeka; SARAH MORGAN, Kansas City, Kan.; EUNICE NIELSON, Atchison; ESTHER MARGUERITE NORMAN, Kansas City, Kan.; ELIZABETH PEYTON, Kansas City, Mo.; JANET A. PINNEY, Hiawatha; LOIS IRENE ROSS, Dover; CELIA ENID SCHUERMAN, Salina; DORIS MARIE SHOLANDER, Topeka; MARY JANE SIGLER, Kansas City, Kan.; BARBARA SMITH, Waverly; RUTH ELOISE SPENCER, Topeka; JANET CAROLINE STOLTENBERG, Holywood; ROSE ELEANOR SWAN, Erie; ESTHER TIPPIN, Topeka; ELIZABETH RITA WHITE, Lead, So. Dak.; LILLY ELLEN WILLIAMS, Russell Springs; HELEN ELIZABETH WILSON, Kansas City, Kan.; MARY ELIZABETH WILSON, Ness City, BARBARA ELLEN WOODARD, Hutchinson; KATHRYN MARIE ZENOR, Hutchinson; CLEOJEANE SMITH, Moline; HELEN BESSIE VAN DYKE, Kansas City, Kan.

The Holders of Watkins Hall Scholarships for the Year 1938-1939 were as follows: BETTY LEE BEATTY, Ellsworth; PHILOMENE BOURASSA, Topeka; ROSE ETTA CARR, Osawatimie; ELIZABETH CURRY, Wichita; DOROTHY DOUGLAS, Olathe; ADDIE MARY EGBERT, Topeka; HERTA EICHTERSHEIMER, Newark, N.J.; ROSELYN FELTON, Kansas City, Kan.; LILLIAN FISHER, Leavenworth; MARJORIE LORETTA FRAZIER, Athol; DELPHINE RUTH GFELLER, Junction City; SARA JANE GRAHAM, Wellsville; GENEVIEVE JUNE HARMAN, Tonganoxie; DOROTHY LOUISE HENDRIKSON, Atchison; MARION BARTLETT HORN, Rocky River, Colo.; LAURA HELEN JOHNSON, Mound City; MURIEL HELEN JOHNSON, Topeka; EVELYN MARIE KAMP-RATH, Leavenworth; RUTH KNOCHE, Paola; MARGERY E. LEWIS, Atwood; BERNICE EVANGELINE MALM, Silver Lake; JOHANNA CORRINE MARTIN, Paola; MARY McANAW, Excelsior Springs, Mo.; MARY MINTA McDONALD, Eureka; RUTH LOUISE MERCER, Wellington; VERDA LEE MILLER, Bethel; MARCIA MOLBY, Salina; IMOGENE M. MORRIS, Moline; MURIEL INGEBORG MYKLAND, Chapman; MARY LOU OLIVER, Kansas City, Kan.; ALICE J. PADEN, Topeka; MARY ELLEN ROACH, Lowmont; VIRGINIA MAUDE ROSE, Paola; LELA ISABEL ROSS, Dover; ADDENE SAXTON, Waverly; NADINE ETHEL SCHUERMAN, Enid, Okla.; AGNES BETTY STRACHAN, Topeka; RUTH TIMPE, Easton; RUTH WARREN, Lawrence; JOYCE STANDIFERD, Salina.

Prizes

Prizes have been awarded as follows to students of the University of Kansas in the academic year 1938-1939:

The University Honor Award for 1938 to the senior man whose influence on University student life was adjudged most wholesome and helpful, to DEAN MOORHEAD of Hugoton, Kan., and DONALD S. VOORHEES of Leavenworth, Kan.

The Hattie Elizabeth Lewis Prize Essays in Applied Christianity: First Prize to JOHN LINTER of Wichita, for his essay on "Reflections on the Current Devaluation of Man."

Second Prize to LENORA JENSEN of Lawrence, for her essay on "Christ and the Science of Morals."

Third Prize to DONALD TAYLOR of Topeka, for his essay on "Man's Quest."

Fourth Prize to PAUL MORITZ of Marysville, for his essay on "New Directors for Youth—the Christian Challenge."

The William Herbert Carruth Memorial Poetry Prizes:

First Prize to KENNETH RALPH LEWIS of Topeka, a senior in the College for his poem "Sonnets from a Diary."

Second Prize to SIGRID ELAINE STEEPER of Lawrence, a freshman in the College for her poem "Bulbs."

Third Prize to RAYMOND KIRK FARIS of Kansas City, Mo., an unclassified student in the College for his poem "My Future Son."

Honorable Mention to RICHARD D. MACCANN of Wichita, a junior in the College and RUTH SPENCE of Hiawatha, an unclassified student in the College.

Nathan Burkan Competition Prize given by the American Society of Composers, Authors, and Publishers. "Copyright Law," to HAROLD C. COOK, 3rd year law.

The A. Morris Ginsberg Prize in Medicine to the Junior student who has done the best work in the Department of Medicine to HAROLE EUGENE POOLE, of Emporia.

The Hannah Oliver Latin Prize, provided by friends of Miss Hannah Oliver, A.B., 1874, associate professor emerita, to WILLIAM J. GILSTRAP of Topeka, a senior in the College.

The Phi Chi Theta Scholarship Key to the woman in the School of Business ranking highest in scholarship activities and leadership, to THELMA LORRAINE PYLE of Haviland, a senior in the School of Business.

The Lambda Chapter of Chi Omega Prize for the ranking woman in the department of economics in the college or School of Business to THELMA LORRAINE PYLE of Haviland, a senior in the School of Business.

The Delta Sigma Pi Key to the ranking man in the School of Business, to EDWARD VALDEAN KRUEGER of Eldorado, a senior in the School of Business.

The Alpha Kappa Psi Medallion to the ranking junior man in the School of Business to WILLIAM KANSAS WAUGH of Eskridge, a junior in the School of Business and W. KEITH SCHUERMAN of Salina, a junior in the School of Business.

The Honor Graduates of R.O.T.C. for highest scholarship and proficiency in military training to WILLIAM F. BEATY, Infantry, R.O.T.C. Unit, a senior in the School of Business and JAMES H. SUND, Coast Artillery R.O.T.C. Unit, a senior in the School of Business.

Honor Award for Distinguished Academic and Military Standing through his four year course to CADET MAJOR WRAY A. SHOCKLEY, Infantry Unit, School of Engineering and Architecture.

The Sigma Tau Scholarship Medal to the sophomore in the School of Engineering and Architecture having the highest freshman scholastic standing to PRESSON SCOTT SHANE of Junction City.

The Kansas State Section of the American Society of Civil Engineers Award to the civil engineering graduate having the highest scholastic standing for four years, to JAMES R. SHIPLEY JR. of Lawrence, a senior in the School of Engineering and Architecture.

The American Society of Mechanical Engineers Regional Award to GEORGE W. RUSSELL of Lawrence, a senior in the School of Engineering and Architecture.

The American Institute of Architects Medal for excellence in architectural work throughout the course to THOMAS J. GERAUGHTY of Kansas City, Mo., a senior in the School of Engineering and Architecture.

The Alpha Rho Chi Medal to the graduating senior in architecture for leadership, service and promise of real professional merit through his attitude and personality to CHARLES W. STRIEBY, of Humboldt, a senior in the School of Engineering and Architecture.

The Sigma Delta Chi National Scholarship Awards in Journalism to HAROLD E. ADDINGTON of Baldwin, a senior in the College; to KENNETH R. LEWIS of Topeka, a senior in the College; to MARY JANE SIGLER of Kansas City, a senior in the College; to RUTH TIMPE of Easton, a senior in the College and to TOM YOE of Independence, a senior in the College.

The Henry Schott Memorial Prizes in Journalism to HARRY HILL of Lawrence, a junior in the College and STEWART JONES of Neodesha, a junior in the College.

The Penfold Prizes in Photography to BERT BRANDT of Wichita, an unclassified student in the College and STUART B. WALKER of Kansas City, Mo., an unclassified student in the College.

The Alpha Chi Sigma Award for outstanding achievement in chemistry and chemical engineering to GEORGE GORDON of Kansas City, Mo., a senior in the School of Engineering and Architecture and to VETE NOWOSINSKE of Kansas City, a senior in the College.

The Rowlands Prize in Antique Drawing to ANN MURRAY of Lawrence, a freshman in the School of Fine Arts.

The Rowlands Prize in Design to HELEN E. ROLFS of Lorraine, a sophomore in the School of Fine Arts.

The Keeler Painting Prize to VIOLET LAMONT of Lawrence, a sophomore in the School of Fine Arts.

The Carter Stationery Prize in Painting to JEANNE A. MCKNIGHT of Lawrence, a junior in the School of Fine Arts.

The Carter Stationery Prize in Design to ROSE MARIE RICHARDSON of Lawrence, a freshman in the School of Fine Arts.

The Good Housekeeping Safety Crusade Poster Contest: Special honorable mention to RICHARD J. HARWOOD of Wichita, a senior in the School of Fine Arts.

The Thayer Medal for excellence in architectural design to JOHN C. MORLEY of Kansas City, Mo., a senior in the School of Engineering and Architecture.

The Scarab Prize for excellence in Sophomore Architectural design to BRUCE B. JOHNSON, of Monett, Mo.

The Alice Chittenden Prize for excellence in Freshman architectural work to F. HAMPTON WHITE of Lawrence.

The Delta Sigma Rho medal for excellency in debate to OMER G. VOSS of Phillipsburg, a senior in the School of Law.

The Vernon's Prize in Design to HAROLD W. BURNS, of Raymond, a freshman in the School of Fine Arts.

Acting Award for excellence in acting to LUCILLE WAGONER of Iola, a student in the Graduate School and to JOHN H. LAFFER of Wichita, a senior in the College.

The Carl Schurz Memorial Foundation Prize to the senior doing outstanding work in the field of German Literature, to KATHERINE ASTON of Lawrence.

American Crayon Company contest: First Prize to VIRGINIA HAWKINSON of Kansas City, Mo., a senior in the School of Fine Arts.

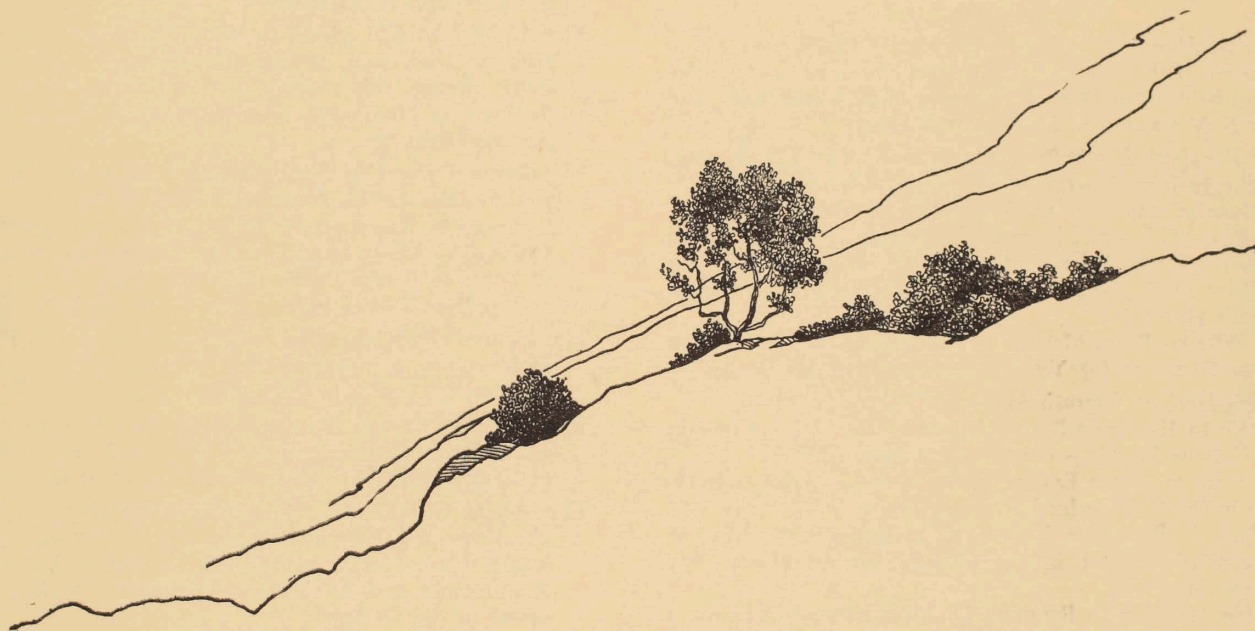
Parents' Day Poster Contest: First Prize to LOUIS WEINBERG of Oskaloosa, a sophomore in the School of Fine Arts.

Western Union Telegraph Contest: Special Honor Mention to BARBARA B. ALLEN of Kansas City, a senior in the School of Fine Arts.

The Lehn & Fink Gold Medal for 1939 to ALBERT A. LAUGHLIN of Topeka, a senior in the School of Pharmacy.

National Live Stock and Meat Board of Chicago poster prize: First prize to ANDREW DARLING of Kansas City, Mo., an unclassified student in the School of Fine Arts; other prizes to JEANNE MANTELLE, Halstead; GERTRUDE KAUFMANN, Kansas City, Mo.; CHARLES W. WRIGHT JR., of Topeka; LOUIS WEINBERG of Oskaloosa and ROBERT SUDLOW of Holton, all in the School of Fine Arts.

Jayhawk Creamery Company trademark prize: first to KEITH STARR of Eudora, a special student in the College; second prize to VIRGINIA HAWKINSON of Kansas City, Mo., a senior in the School of Fine Arts and third prize to MARGUERITE MYERS of Kansas City, Mo., a senior in the School of Fine Arts.



Sixty-eighth Annual
COMMENCEMENT

June 7 to 10, 1940



Program of Events

UNIVERSITY OF KANSAS
LAWRENCE

Program of Events

FRIDAY, JUNE 7

8:00 p.m. Commencement Recital, School of Fine Arts, Hoch Auditorium.

SATURDAY, JUNE 8

9:00 a.m. Golf for Visiting Alumni, the Lawrence Country Club.

10:00 a.m. Alumni Registration Opens, Memorial Union.

3:00 p.m. Baseball, Class of '40 vs. Alumni-Faculty, Intramural Field.

3:30 p.m. Panel-Forum, "European Situation," Fraser Theatre.

4:00 p.m. Engineers' Annual Meeting, Marvin Hall.

5:30 p.m. Torch Chapter Mortar Board Reunion.

6:00 p.m. Sachem Powwow.

7:30 p.m. Open Air Band Concert on Campus.

8:30 p.m. University Reception, Memorial Union.

9:30 p.m. Alumni-Senior Reunion Dance, Memorial Union.

SUNDAY, JUNE 9

- 11:00 a.m. Commencement Exercises at all Lawrence Churches.
- 12:30 p.m. Reunion Dinner, Class of 1890, Evans Hearth.
- 2:00 p.m. Open House at all University Buildings.
- 2:15 p.m. Commemorative Service, Hoch Auditorium.
- 3:30 p.m. Premiere Showing of K.U. Movies, Hoch Auditorium.
- 4:00 p.m. Band Concert, Fowler Grove.
- 4:30 p.m. Class and Group Reunion Dinners. All Reunion Headquarters at Memorial Union.
- The Senior Alumni (Graduates of 1889 and previous)
- The Class of 1900.
- The Law Class of 1910.
- The Class of 1915.
- The Class of 1930.
- 7:00 p.m. Baccalaureate Services, Memorial Stadium. Sermon by Dr. John Charles Schroeder, Professor of Homiletics and Pastoral Theology, Yale University.

MONDAY, JUNE 10

- 7:15 a.m. Class of 1940 Breakfast, Memorial Union Building.
- 9:45 a.m. Annual Alumni Association Meeting, Fraser Hall. Address by William Allen White.
- 12:15 p.m. University Luncheon, Memorial Union.
- 3:30 p.m. Panel-Forum, "Industrial Expansion in Kansas," Fraser Theatre.
- 4:00 p.m. Phi Beta Kappa Annual meeting, basement Spooner-Thayer Museum.
- 7:00 p.m. Commencement Exercises, Memorial Stadium. Address by Chancellor Deane W. Malott.

1939/40
0/17

The University of Kansas

through its
Board of Regents, Chancellor
and Faculties

extends a most cordial
invitation

to all

Alumni, Former Students and
other friends

to be present
at the

Sixty-eighth

Annual Commencement

June seventh to tenth
nineteen hundred
forty



SIXTY
SEVENTH
ANNUAL

Commencement

UNIVERSITY
OF KANSAS

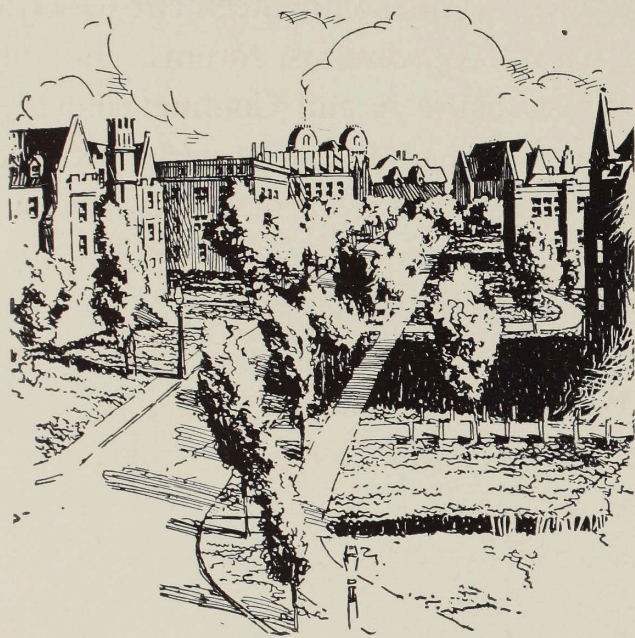


UNIVERSITY OF KANSAS
LAWRENCE

GENERAL PROGRAM
of Events, Forums, Exhibits

Commemorating the nine-
teen years of service by
Chancellor E. H. Lindley

Sixty-seventh Annual
COMMENCEMENT
June 9 to 12, 1939



THE UNIVERSITY OF KANSAS

COMMENCEMENT, 1939

THE University of Kansas this year graduates its sixty-seventh class—a group of a thousand young men and women. The Commencement season is a busy one, filled with class reunions, forums, and the formal exercises of Baccalaureate and Commencement. It is a time when returning alumni meet again with classmates and instructors, and become acquainted again with their University.

As a climax to the three days activities, the senior class will march down the long slope from the north entrance of Frank Strong Hall to Memorial Stadium thus leaving behind, symbolically and in truth, the doors of their University to take place in the field of life.

This year the University also takes special note of the nineteen years of service of Dr. E. H. Lindley, who retires as Chancellor of the University on July 1, 1939. After a year's leave of absence, Dr. Lindley will return as Chancellor Emeritus and become a member of the faculty of the University.

Detailed programs of the Commencement events, together with the Commencement Forums, the Commencement Exhibits, and an account of the nineteen years of Chancellor Lindley's administration are given in succeeding pages of this general program.

Commencement

JAMES BRYANT CONANT,
President,
Harvard University

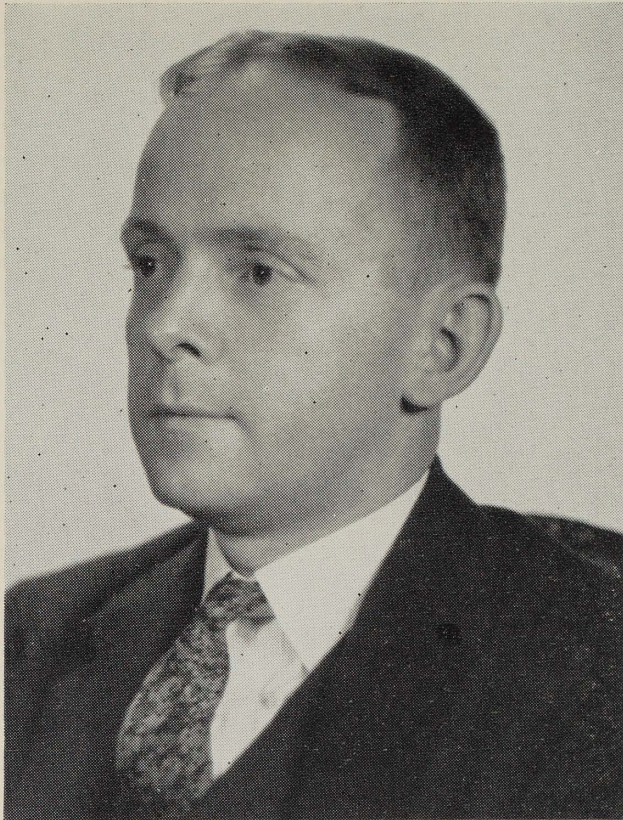


FRIDAY, JUNE 9

- 8:00 p.m. Commencement Recital, School of Fine Arts, Hoch Auditorium.

SATURDAY, JUNE 10

- 9:00 a.m. Golf for Visiting Alumni, Lawrence Country Club.
10:00 a.m. Alumni Registration opens, Memorial Union.
3:00 p.m. Baseball, Class of 1939 vs. Alumni-Faculty, Intramural Field.
3:30 p.m. Conversational Recital, from the works of Frederick Chopin, by John C. Manning, fa'89, San Francisco, Calif., Auditorium Central Frank Strong Hall.



Baccalaureate

REV. J. HARRY COTTON,
Minister to the Broad Street
Presbyterian Church,
Columbus, Ohio.

- 4:00 p.m. Engineers' Annual Meeting, Marvin Hall.
- 5:30 p.m. Torch Chapter of Mortar Board Annual Reunion
Dinner, Evans Hearth.
- 6:00 p.m. Sachem Powwow, Pine Room, Memorial Union.
- 7:30 p.m. Open Air Band Concert, Campus North of Watson
Library.
- 8:30 p.m. University Reception, Memorial Union.
- 9:30 p.m. Alumni-Senior Reunion Dance, Memorial Union.

SUNDAY, JUNE 11

- 11:00 a.m. Commencement Services in All Lawrence Churches.
- 12:30 p.m. Class of 1889 Dinner, Evans Hearth.
- 2:00 p.m. Open House at All University Buildings.

2:30 p.m. University Commemorative Service, Hoch Auditorium.

PROFESSOR CHARLES S. SKILTON at the Organ

"I KNOW THAT MY REDEEMER LIVETH".....Handel
MAXINE ROACH

"LARGO"Handel
Reading of Memorial List, ALLEN CRAFTON

"WHERE'ER YOU WALK".....Handel
JOHN HUGHES LAFFER

3:30 p.m. "Across the Years on Mt. Oread," by Prof. Robert Taft, Hoch Auditorium.

3:30 p.m. Open House, Westminster Hall, for alumni and friends.

4:00 p.m. Open Air Band Concert, Fowler Grove.

4:30 p.m. Class Reunions, Memorial Union.

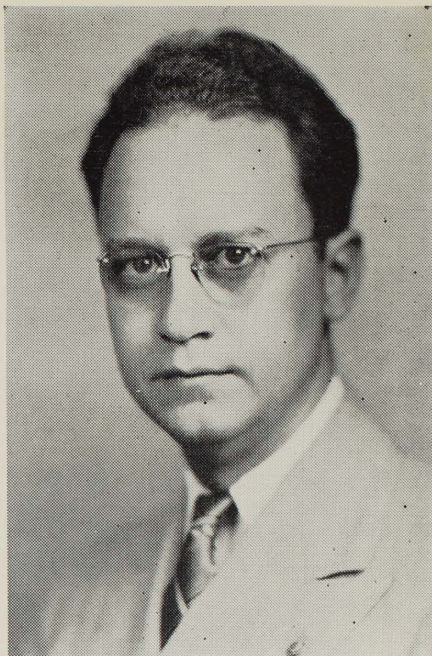


Board of Regents

FRED M. HARRIS,
Chairman,
Board of Regents

The Governor

PAYNE H. RATNER
Governor,
State of Kansas



BACCALAUREATE SERVICES

Sunday, June 11, 7 p.m., Memorial Stadium

PROCESSIONAL, "Grand Commencement March,"

Arranged by William Ward

UNIVERSITY OF KANSAS BAND, RUSSELL L. WILEY, *Director*

INVOCATION THE REV. CHARLES W. THOMAS
Director of the Roger Williams Foundation

HYMN Seymour

SCRIPTURE READING THE REV. C. J. KNOX
Minister to the Centenary Methodist Church

PRAYER THE REV. THEODORE H. ASZMAN
Minister to the First Presbyterian Church

"May Our Mouths Be Filled With Thy Praise," *Rachmaninoff*
WESTMINSTER A CAPPELLA CHOIR, D. M. SWARTHOUT, *Director*

THE BACCALAUREATE SERMON, "A Citizen of Two Worlds,"
THE REV. J. HARRY COTTON
Minister to the Broad Street Presbyterian Church, Columbus, Ohio

HYMN Duke Street
 BENEDICTION THE REV. W. LAWSON BROWN
 Minister to the Church of the Nazarene
 RECESSIONAL, "Grand March, Skylines," Alford
 THE UNIVERSITY BAND

MONDAY, JUNE 12

7:15 a.m. Class of 1939 Breakfast, Memorial Union Bldg.

MASTER OF CEREMONIES, JACK LAFFER

CAMPUS FOURSOME.....DON WOOD, ART WOLF, FRED LAKE, BILL HAYES

CLASS HISTORY.....TOM YOE and LELA ROSE

CLASS PROPHECY.....LOUIS FOCKELE and ROBERTA COOK

PRESENTATION OF CLASS MEMORIAL, CLYDE SMITH, *president Class of '39*

ACCEPTANCE.....CHANCELLOR E. H. LINDLEY

SMOKING OF THE PIPE OF PEACE

CRIMSON AND THE BLUE and the ROCK CHALK, *led by* JACK NESSLY

7:45 a.m. Strawberry Breakfast, Henley House, for all past and present Y.W.C.A. members.

9:45 a.m. Annual Alumni Association Meeting, Fraser Hall. Followed by—

10:00 a.m. Review of Alumni Achievements by Mathilde Henrichs O'Leary, '95.

12:15 p.m. University Luncheon, Memorial Union.

3:30 p.m. Forum: "An Economic Interpretation of the European Situation" by Prof. John Ise, Fraser Theater.



MATHILDE HENRICHS O'LEARY, '95

- 3:30 p.m. Endowment Association Trustees meeting, 303B,
Frank Strong Hall.
- 4:00 p.m. Phi Beta Kappa annual meeting, Spooner-Thayer
Auditorium.
- 7:00 p.m. Commencement Exercises, Memorial Stadium. Ad-
dress by Dr. James Bryant Conant, president of
Harvard University.

COMMENCEMENT EXERCISES

Monday, June 12, 7 p.m., Memorial Stadium

PROCESSIONAL, "Grand Commencement March,"

Arranged by William Ward

UNIVERSITY OF KANSAS BAND, RUSSELL L. WILEY, Director

INVOCATION THE REV. JOSEPH M. KING
Minister to the Plymouth Congregational Church

ADDRESS, "The Puritan As a Friend of Learning,"

JAMES BRYANT CONANT
President of Harvard University

GREETINGS..... THE HONORABLE PAYNE H. RATNER
Governor of the State of Kansas

GREETINGS..... THE HONORABLE H. L. SNYDER
Member of the Board of Regents

CONFERRING OF DEGREES..... CHANCELLOR E. H. LINDLEY

PRESENTATION OF DIPLOMAS.. THE HONORABLE FRED M. HARRIS
Chairman of the Board of Regents

BENEDICTION..... THE REV. JOHN BOWERS
Minister to the Trinity Episcopal Church

THE CRIMSON AND THE BLUE

RECESSIONAL, "Spanish March, Bravada," Curzon

COMMENCEMENT FORUMS

Returning alumni, parents of graduating students, members of the faculty, and other friends of the University are cordially invited to attend the several informative and entertaining discussions planned for the Commencement period by the Committee on Forums. The discussions, described below, are presented by the Committee with distinct pleasure; and those attending are invited to offer suggestions for future meetings of the sort.

CONVERSATIONAL RECITAL FROM THE WORKS OF CHOPIN

JOHN C. MANNING, '89



The artist on this program is the first man to be graduated in music from the University of Kansas. Later he studied under Edward MacDowell and others of note in Boston and under Isador Philipp in Paris. Mr. Manning was a pianist of first rank in New England until 1914 when he went to San Francisco and founded the Manning School of Music. Through that school and his own playing he has established a wide reputation on the West Coast. He returns to his alma mater today to give one of his "Conversational Recitals" for which he has won such favorable comment in colleges and universities as well as other groups on both coasts.

He will be introduced by his old friend, William Allen White.

ACROSS THE YEARS ON MOUNT OREAD
PROFESSOR ROBERT TAFT

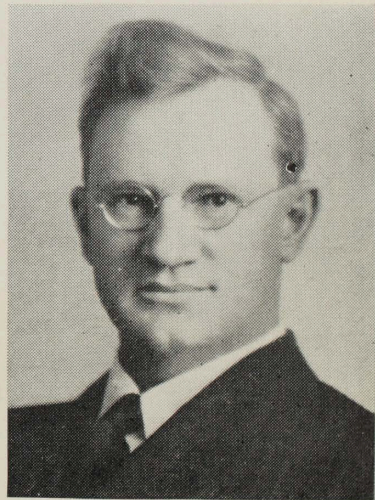


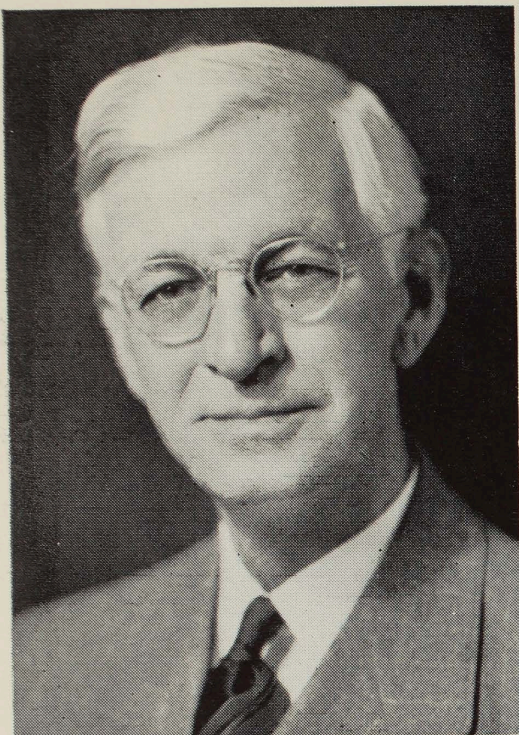
The story of the University of Kansas presented on the screen. Beginning with a background of Kansas at the time the University first opened its doors on September 12, 1866, it has been possible to assemble a collection of pictures, chiefly photographs, that will outline the growth of the University and its life down to the present day. Many unique and interesting pictures have been discovered in search for material illustrative of the history of the University.

AN ECONOMIC INTERPRETATION OF THE
EUROPEAN SITUATION

PROFESSOR JOHN ISE

There can be no simple explanation for the spread of fascism over Europe, but probably economic factors are largely responsible. For various reasons the economic systems of industrially advanced countries, in Europe and elsewhere, have failed to provide employment and economic security; labor and, to some extent, other classes have turned toward radicalism; and fascism has been the answer—a system designed to keep the laborers in their places, and to provide employment and security.





DR. E. H. LINDLEY

*Beloved
Chancellor
of the
University*

1920-1939

MRS. LINDLEY

*Charming
University
Hostess*



NINETEEN YEARS OF SERVICE

THE SIXTY-SEVENTH annual Commencement of the University of Kansas marks the close of nineteen years of distinguished and devoted service to the institution and the state by Dr. Ernest Hiram Lindley, who came here as Chancellor in the fall of 1920. Characterized as the University's most prolific period of growth and expansion, raising it to a high standard comparable to the great educational institutions of other states, Dr. Lindley's tenure of office will be remembered as one of able administration and sympathetic and kindly leadership.

Many fine tributes have been paid Dr. Lindley for his record as head of the State's chief educational institution, but space permits the printing only of the following article by William Allen White, noted editor and author, a former student of the University, and formerly a member of the Board of Regents of the University:

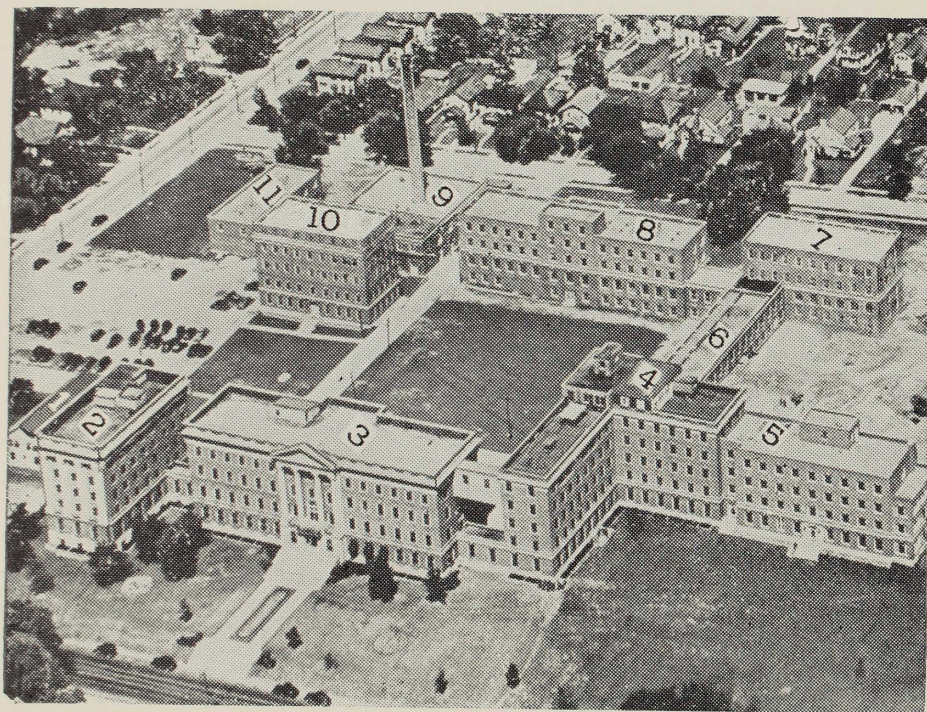
Dr. Lindley's Lasting Imprint

BY WILLIAM ALLEN WHITE

I have known all the Chancellors in the University but one—General Fraser. When I came to the University in the middle eighties, Chancellor Lippincott was in charge. He was the last head of the University who made any pretense to formal piety. In the 1880's a college president was generally supposed to be a preacher. He read the Bible and said a prayer in chapel. Someway religion and higher education were bound together by the thought and customs of the day. So I remember better

than anything else about him, Lippincott's prayers in chapel and the aura of real sanctity which surrounded him. He was the last full time Chancellor who wore square-rigged whiskers. Dr. Frank Snow, who succeeded Lippincott was an evolutionist, head of the biology department, and the religious people of the state attacked him as an atheist, though I used to see him at the Congregational church every Sunday when I went there. But certainly he moved in no odor of sanctity. His chapel prayers were purely perfunctory. He was a scientist. When they dedicated Snow Hall, the great evolutionists of the country came to celebrate the dedication of the building.

After Snow passed, W. C. Spangler was acting Chan-



THE SCHOOL OF MEDICINE AND UNIVERSITY HOSPITALS AT KANSAS CITY
1. Old Dispensary Building. 2. Nurses's Home. 3. Bell Memorial Hospital. 4. Ward Building. 5. Children's Pavilion. 6. Connecting Corridor. 7. Negro Ward. 8. Dispensary. 9. Power Plant and Laundry. 10. Hixon Laboratory for Medical Research. 11. Warehouse.

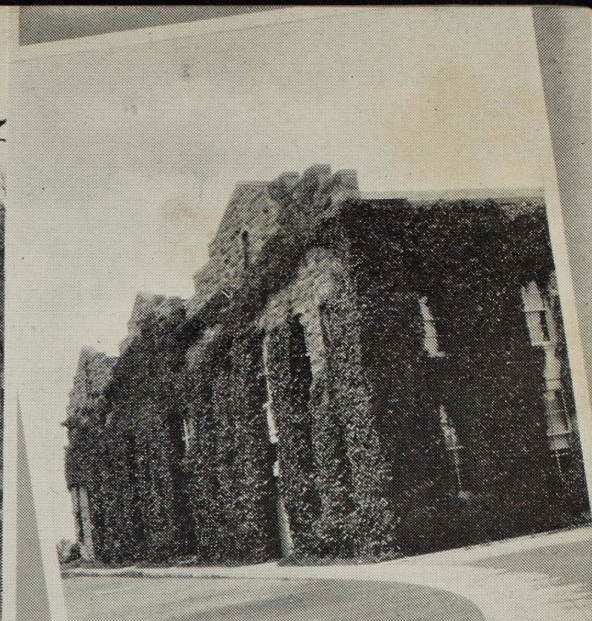
cellor, but his health was frail and we knew that his appointment was impermanent—a stop-gap. But nevertheless he was a competent man and if he could have lived, he would have been a great Chancellor.

By the time Spangler left I was a member of the Board of Regents, when Dr. Frank Strong took charge. Frank Strong was a builder. In his day, which covered nearly two decades, Mount Oread was physically transformed. In those two decades, the first and second decades of the century, the University became a University in fact—somewhat by the mere piling up of brick and mortar—the law building, the engineering building, the original medical school building, the gymnasium, the first units of the Administration building. Someway these buildings divided the student body into professional groups and while the Fine Arts School moved along with the current of the times, it seems to me that in Dr. Strong's day the professional schools took their places in the cosmology of the University, stars of the first magnitude.

I first knew Chancellor Lindley when he was head of the department of psychology in Indiana State University. Then I knew him when he was at the head of the Idaho University at Moscow, Idaho. Perhaps my recommendation of him to Governor Allen had something to do with his appointment. I really don't know. Anyway I have been proud and happy to support his administration ever since he came to the University. And now that he is retiring I shall feel lonesome for him. He represents to me, who have known all Chancellors of the University at least since its childhood days—if not at its birth—a time of coordination and growth. The Lindley administration in his two decades has brought the professional schools together, has united the various academic elements and has welded the University of Kansas



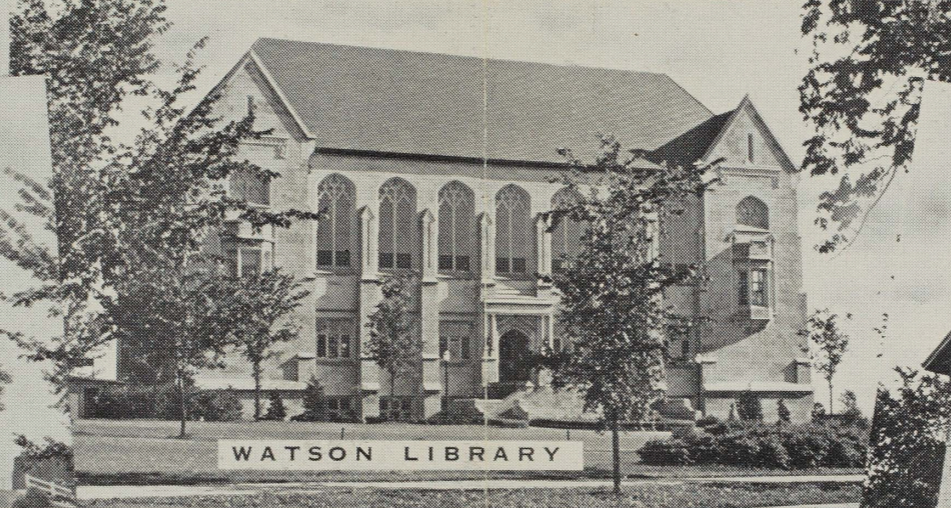
FRANK STRONG HALL



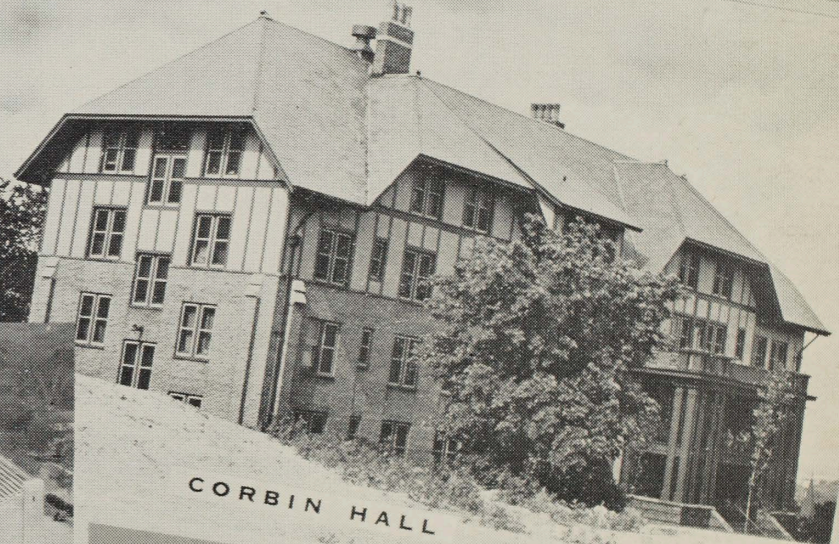
ELECTRICAL ENGINEERING LABORATORY



POWER PLANT



WATSON LIBRARY



CORBIN HALL



HOME ECONOMICS PRACTICE HOUSE



MEMORIAL STADIUM



MEMORIAL UNION BLDG.



HOCH AUDITORIUM



SNOW HALL

into a strong cultural unit. Dr. Lindley has taken the physical plant which was built in the days of Chancellor Strong and which has been greatly enlarged in his term, and has given the University purpose and direction. Part of this purpose and direction has come inevitably with time. Doubtless if Dr. Strong had been younger and had held on, he would have done something like the splendid job that Dr. Lindley has done.

But here it is, this University, the cultural capital of Kansas. Probably more men have gone out of the portals of the University to govern this state in the last fifty years in all its activities, commercial, industrial, political, than have come from any other institution. Chancellor Strong put his mark upon the boys and girls of his day. They now are in their middle life. The youth who will shape Kansas tomorrow will shape it out of the ideals that were planted in them by the University under Dr. Lindley. His shadow will take substance in the purposive life of Kansas in the forties, fifties and sixties of this century. Then we shall know what he really meant. Then he will reveal in the lives of the young men and women whose visions he formed what he really intended, what he really is and was. Then he will see his dream come true. For old men shall dream dreams while young men see visions.

What He Has Done

In 1920, just as the people of the United States had emerged from thoughts of war and were planning peace time development on a new and broader scale, Governor Henry J. Allen and his State Board of Administration (H. J. Penney, E. L. Barrier, and Wilbur N. Mason) appointed to the Chancellorship of the University of Kansas Dr. Ernest Hiram Lindley.

Coming with a rich educational background of studies at the

University of Indiana, at Clark, at Harvard and at Jena in Germany, with long teaching experience at Indiana and at other universities, with three years' successful administrative tenure at the University of Idaho, and with a fine record as a lecturer and writer, he became leader of Kansas' chief educational institution. After nineteen years, he retires from the Chancellorship to travel a year and return as a teacher, counselor and lecturer in the field of ethics. To give an estimate of his accomplishments in a short space is entirely inadequate. But brief mention of them will serve to give readers a starting point from which to supply details of those mentioned and of others.

CHANGED THE LAW

When Dr. Lindley came to Kansas he expressed a determination to do all he could to change in particular two situations then existing. One was political control of the state institutions of higher learning. The other was a low salary scale. He began to talk on both problems and to work toward their solution.

Beginning in 1913 the University and the four other state schools were managed by the same paid board along with the state's twenty-two penal, elementary and charitable institutions. In 1922 the Chancellor obtained through the U.S. Bureau of Education an official survey of the system of higher education in Kansas. The survey was made thoroughly by Dr. George Zook, a Kansas alumnus and later U.S. Commissioner of Education, President L. D. Coffman of the University of Minnesota, and Dean A. R. Mann of Cornell. The report of this body strongly urged that the five institutions of higher learning be put under a separate non-paid board.

This report, issued by the U.S. Department of Education, was disseminated widely among the leaders of the state. With the ground thus inoculated, the people interested in the welfare of the state schools were ready to act when one Governor summarily dismissed the Chancellor and the next immediately reinstated him. The issue of political control of the educational institutions came to the front clearly. In the excitement of the dismissal Dr. Lindley saw to it that everyone kept that issue in mind to the exclusion of all other considerations. With the backing of the people of Kansas the legislature passed the needed law. Now the benefit of non-political control has become so well observed that the recent legislature added to the supervision of



WATKINS MEMORIAL HOSPITAL



WATKINS HALL



MILLER HALL

The
WATKINS
MEMORIALS
given to the
UNIVERSITY OF KANSAS
by
MRS. J. B. WATKINS



WATKINS HOME

the Board of Regents four more institutions of an educational nature.

Chancellor Lindley always has preached the doctrine of adequate salaries for university faculty as a sound investment for the state. The legislature of 1921 raised the salary appropriation from the \$598,000 allowance of the 1919 session to \$780,000, an increase of slightly more than 30%. Subsequent legislatures increased it to \$919,000 by 1929 which was 53.6% more than the 1919 figure. Reductions incident to the depression and later restitutions have brought the current yearly appropriation to \$830,000 or 38.8% over the 1919 level.

Enrollment has increased in about the same proportion. The additional income from fees makes the situation somewhat better than twenty years ago. In buildings and other physical improvements a total of \$4,299,000 of investments have been made on the Lawrence campus and at the Kansas City Medical School plant. Of this amount \$1,281,000 have been gifts. The additions to the main Campus are shown on pages 16, 17, and 20, and the hospital units on page 14.

MEMORIAL CAMPAIGN STIRRED

It so happened that just prior to the coming of Chancellor Lindley a great campaign had been conceived to honor the K.U. men and women who had died in the World War. Students, faculty and alumni were to build from contributions a stadium and a union. Coincidental was a movement among law school students and alumni to erect a statue to their beloved Dean, James Woods Green. Dr. Lindley took an active leadership in that campaign and proved an inspiring force which brought success. The activity threw him into contact more intimately with far more alumni and friends of the University than any other Chancellor had ever enjoyed. The friendly relationships thus engendered have been beneficial to the University and the alumni on through the years.

There are many who say that more important than such achievements as these has been Chancellor Lindley's fine internal administration. His democratization and unification of faculty and student body have been remarkable. Harmonious relationships among the faculty and general confidence in the administration are noted by visitors to the campus and by new staff members. These have resulted in the retention of out-standing

teachers who have been called elsewhere at higher pay as well as more efficient everyday operation of the University of Kansas. The large degree of successful student self government at Kansas has attracted wide attention and has had its beneficial results.

In recent years Dr. Lindley has become a national figure as a protagonist in the cause of youth and its right to educational service even under adverse conditions. He is given much of the credit for inclusion of the NYA program in the national relief plan.

He served one year as president of the American Association of State Universities and for many years as chairman of that body's committee on student life. He has long represented the A.A.S.U. in the American Association of Medical Colleges and in the American Medical Association. He is a member of the board of the Carnegie Foundation for the Advancement of Teaching.

INTEREST IN ALL PHASES

Under Dr. Lindley's administration the Medical School at Kansas City has been developed and an entire new plant provided. He has seen the founding of the School of Business and the departments of petroleum engineering, chemical engineering, public school music, and an expanded four-year course in physical education leading to a degree. Also the other departments and divisions have been developed. One of the secrets of his success has been his sympathetic encouragement of each of the many phases of the University—the fine arts, the sciences, the state services, the student and alumni activities, the friendships, the personal problems.

Through Dean Walker's industrial surveys in the 20's and later the State Geological Survey, the State Health Department and the chemical and petroleum engineering departments the University under Dr. Lindley's administration has aided the state's industrial and health program. He has been ever active with the State Chamber of Commerce and with other state activities looking to improvement of conditions generally.

The University's relationship with the other educational institutions of the state and nation have been friendly and wholesome under his guidance.

His imprint as Chancellor will be lasting. His many fine relationships with the University body will be continued.

COMMENCEMENT EXHIBITS

MEMORIAL UNION BUILDING

The Memorial Union building is the center of student life at the University, as well as headquarters for the returning Alumni. It contains lounging and recreational rooms, offices for student organizations, a cafeteria, and on the second floor a very fine ball-room. The Memorial Union offers meeting rooms for returning Alumni after they have registered, and in it will be the University luncheon and Alumni reunion Monday noon. A relief map of the University campus will be on display on the main floor.

FRASER-WILCOX CLASSICAL MUSEUM

The Wilcox Museum of Classical Antiquities is found in the south wing, second floor, rooms 206, 208, 210, Fraser Hall. The collection contains several reliefs, fifteen full-sized plaster casts, illustrating Greek and Roman sculpture, and a dozen slabs of the north frieze and twenty of the east frieze of the Parthenon.

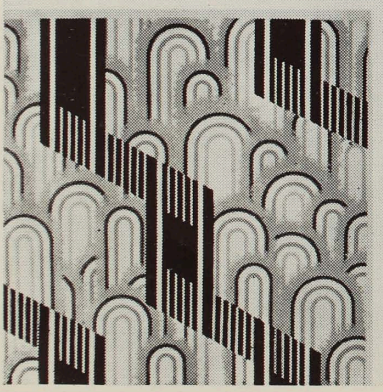
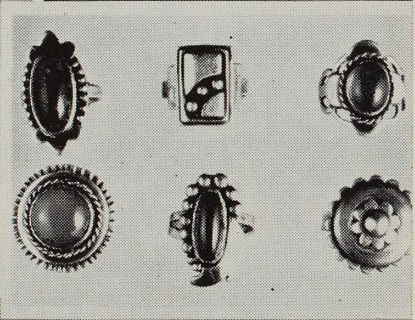
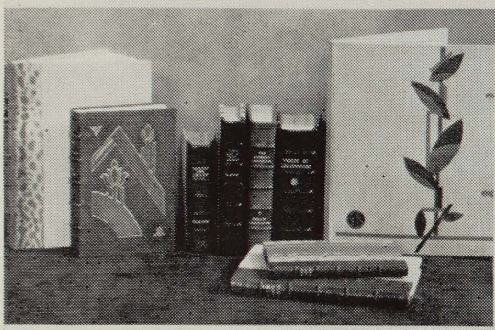
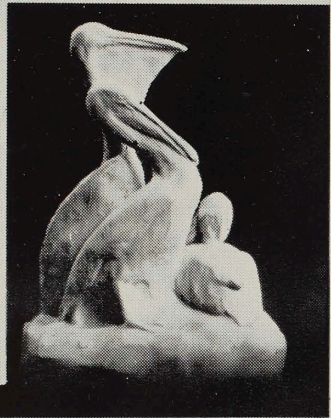
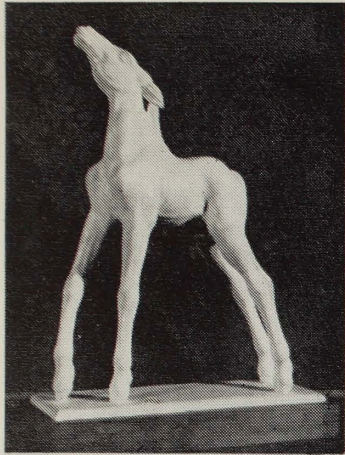
The museum contains a good-sized collection of specimens of building stones used in Roman structures; inscriptions, vases, lamps, cinerary urns, lock and keys, articles of dress, and specimens of Roman glass. In addition there are numerous photographs illustrating Greek and Roman topography and life, and many other interesting exhibits of classical antiquities. The aim of the museum is to make more vivid the life of ancient times.

DYCHE MUSEUM OF NATURAL HISTORY

Rapid progress is being made on the reconstruction of Dyche Museum of Natural History, but the building will not be open at this Commencement season. When finally completed Dyche Museum will house one of the most complete and elaborate collections of mammals and birds of its kind in any college museum in America.

FRANK STRONG HALL—FINE ARTS

The third floor of the Frank Strong Hall is given over to the Department of Design (West Strong Hall) and Department of



Drawing and Painting (East Strong Hall). Exhibitions of student work may be seen in the various class rooms and corridors on this floor. The exhibitions of current art work by students of the Department of Design include textiles, pottery, jewelry and metal work, bookbinding, art in industry and public school art projects, illustrated on opposite page. These may be seen in rooms 308, 310, 314, 316, 320 and in the corridors of West Strong Hall. The exhibitions of current art work by students of the Department of Drawing and Painting may be seen in room 325 and in the corridors of East Strong Hall. Room 323 houses the Brynwood Collection of Paintings loaned to the University by Mr. Chester Woodward of Topeka.

WATSON LIBRARY

The University Library contains some 300,000 volumes catalogued and classified, and a large amount of unbound and uncatalogued material. The library receives more than 2,300 different periodicals and publications of learned societies either through purchase, gift, or exchange. At present, the volumes are housed under crowded conditions, and the Library is badly in need of more shelf space.

The special exhibits to be seen this year are: Pictures of early Kansas, on the second floor; and an exhibit of early maps of North America from the Vollbehr collection on the third floor.

SNOW HALL

Snow Hall is the home of the Bacteriology, Botany, Entomology, and Zoology departments. The Francis Huntington Snow Entomological Collections are in room 317. These collections consist of more than 500,000 specimens, including a great many species, over a thousand of which are represented by types. The Coleoptera collection is especially complete, containing 10,000 specimens. A display of insects is also shown in room 302.

The exhibit of the Botany Department consists of mounted ferns and grasses, which may be seen in the hall on the fourth floor.

The collections of the Zoology Department are in rooms 112, 201 and 220. Room 112 contains a fine exhibit of reptiles. The Hall leading to Room 112 contains a series of lighted aquaria with specimens of Kansas fish and turtles. The general collection of animals is on display in room 201 and 220.

BAILEY CHEMICAL LABORATORIES

The Departments of Chemistry, Biochemistry, and Chemical Engineering, and the School of Pharmacy are housed in the Bailey Chemical Laboratories. These divisions have prepared the following exhibits. Guides will be available for showing and explaining the exhibits and for special demonstrations.

Production of Liquid Air and demonstration of its most striking properties, Room 7, basement.

Chemical Engineering Laboratories, Rooms 13, 17, and 24, basement. The Chemical Engineering laboratories have been enlarged in that department until they now occupy about 4000 square feet of floor space. The equipment has been designed to demonstrate industrial chemical operations and processes on a semi-commercial scale. Many new pieces of equipment have been added this year, including a single-vacuum effect evaporator, counter-current extraction apparatus, centrifugal filter, drying cabinet, and rotary dryer. Gas analysis apparatus is in Room 13; fuel and lubricants in Room 17; and Unit Operations and Processes Room 24.



Main Lounge, Memorial Union Building

Glassware and Glass Blowing, Room 101, first floor. A display of Pyrex glassware in its various stages of manufacture, and a demonstration of some phases of glass blowing.

Special chemistry exhibit sponsored by the Alpha Chi Sigma chemical and chemical engineering fraternity, Room 110, first floor. This exhibit will include a display of special chemical apparatus and equipment, elements known to the ancients, dyes and explosives, some well known medicinal and essential oils and colloids. The elemental composition of the human body will be shown, and also an experimental demonstration of radioactivity.

Biochemical methods, Room 103, first floor. This is a special exhibit of the apparatus used in modern biochemistry and medical laboratory diagnosis and research. Apparatus for blood and tissue analysis will be shown.

Pharmacy Exhibit, Rooms 203, 205, and 211, second floor. In Rooms 203 and 211 will be found collections of crude drugs, pharmaceutical and medicinal chemicals, and in room 205 pharmaceutical apparatus.

HAWORTH HALL

Haworth Hall houses a fine collection of minerals, rocks and invertebrate fossils. The minerals may be seen in room 102. A special and spectacular exhibit of fluorescent minerals is temporarily on display in Room 101.

The paleontological collections contain more than 250,000 specimens of invertebrates representing fossiliferous rocks from the oldest to the youngest, both from Europe and North America, and extensive collection of coal measures, Cretaceous, Tertiary plant fossils. Exhibits of invertebrate fossils arranged according to geological age and biologic classification are displayed.

Special attention is directed to the new geological map and the topographic relief model of Kansas hung on the east and west walls of the ground floor. On the east wall of the upper floor is a large and excellent geologic cross-section of Kansas, showing all the formations cropping out at the surface and underground across the state from east to west. Attention is called also to an oil well derrick built to scale, and several models showing mining operations underground.

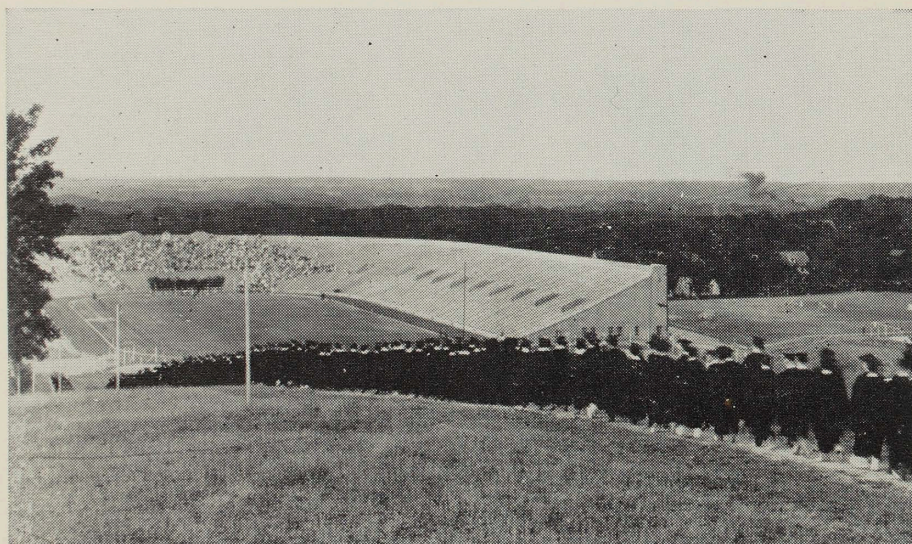
The new Department of Petroleum Engineering is situated in the northeast portion of the basement. At present, facilities are available to care for 12 students during a single laboratory period. Equipment has recently been purchased or constructed for complete core analysis. A natural gas laboratory is situated in the south section of the basement, where the research work is conducted and where complete analyses of hydrocarbon gases may be made, precise temperature control utilized, and intermediate pressure studies safely conducted.

New quarters for Metallurgical Engineering have recently been completed in the south end of the mining laboratory.

The Ceramics laboratory is in the extreme southeastern part of the building.

MARVIN HALL—ENGINEERING

The various engineering laboratories will be open to visitors. Special attention is directed to the exhibition of student work of the Department of Architecture on the third floor. In room 301 of this same floor will be the display of Engineering Drawing. In the basement at the east end are the concrete road and applied mechanic testing laboratories and in the west end the water laboratory of the State Board of Health. Several dioramas show-



Seniors Marching Down to Commencement Exercises

ing improper and proper water well construction are on display on the basement floor.

The University's broadcasting station KFKU is of much interest to visitors and is in room 12 of the Engineering Laboratory Building behind Marvin Hall. In this same building are the electrical, mechanical and aeronautical laboratories. The wind tunnel is under the stadium.

An army training aeroplane donated to K.U. by the U.S. Army may be seen just east of the Engineering laboratories.

THAYER MUSEUM OF ART

First Floor. Rugs, Textiles, Presepe Figures, Pewter, Lacquer, Oriental Carvings, Furniture, Art Library, Ceramics and Glass, Martin Memorial Windows, Burnap Collection of English Porcelain, Pottery and Glass, and a special showing of Stamp Albums and Art Books — recent gift of Harriet Greissinger Brown, fa'95.

Second Floor. Paintings, Etchings, Japanese Prints, and American Furniture. Special exhibitions: Center Gallery, painting by W. A. Griffith, a recent gift; North Gallery, a selected group of Photographs from K. U. Camera Club; in the South Gallery, Oils and Water Colors by Karl Mattern.

Ground Floor. American Indian Art, Colonial Coverlets, Hooked Rugs, Dolls, Quilt Blocks from the Hall Collection, Persian, East Indian and Paisley Shawls, Wilder collection of shoes.

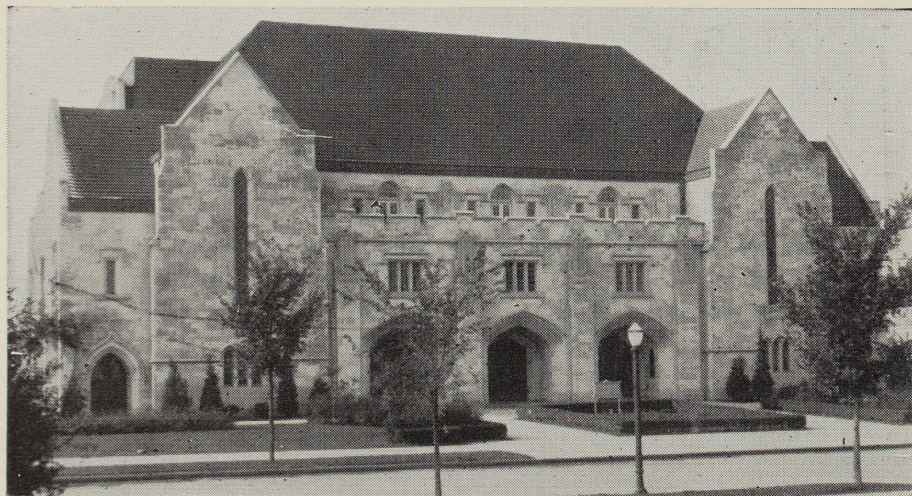
The Thayer Collection of Art, gift of Mrs. W. B. Thayer, is displayed on the three floors of the Spooner-Thayer Building.

Among the exhibits on the main floor, the group of Italian figures including a Nativity arrangement of the 18th Century is rare and interesting; there are few such collections outside Europe. Also on this floor are carvings of lacquer, ivory, jade, crystal, and amber, Japanese inro, textiles, Oriental rugs, pewter, copper, bronze, porcelain and pottery from many countries; furniture and foreign and early American glass. A library of books on art, history, and travel is in the northwest room of this floor. In the southwest room are the Martin Memorial Windows, the 18th Century English porcelain and pottery given by Mr. and

Mrs. F. P. Burnap of Kansas City, types of the 18th Century furniture and some porcelain and pottery from the Thayer collection. A special exhibit selected from the recent gift by Harriet Greissing Brown, fa'95, Santa Barbara, California, of art books, bookplates, stamps, and stamp albums, occupies two cases in the center of the main room.

The galleries on the second floor display paintings and prints, musical instruments and furniture. The permanent collection of paintings by American artists occupies the Central gallery. Also in this gallery may be seen a gift, just received, of a painting by Wm. A. Griffith, Laguna, California, head of the Department of Painting and Design at the University of Kansas from 1899 to 1921. In the South gallery are oils and water colors by Karl Mattern of the Department of Drawing and Painting; in the North gallery, photographs from the K. U. Camera Club.

The ground floor contains the collection of American Indian Art, American coverlets, hooked rugs, dolls, and some Colonial furniture; also examples of quilt blocks from the Hall Collection of Quilt Patterns, and some Persian, East Indian, and Paisley Shawls. There is also a special exhibit of shoes from many countries presented some years ago by Anne Wilder, fs'96.



Hoch Auditorium

The Seventy-fifth Anniversary Celebration

The University of Kansas stands today as the living embodiment of what the people of Kansas have dreamed and planned and accomplished for the young men and young women who are here now. It will be eighty years next September since the cornerstone of the University's first building was laid and seventy-five years in September of 1941 since the first student-body assembled in that building. How little any of us realize what a remarkable evolution has taken place on this prairie hill-top during that three quarters of a century!

May we not, during the next two years, take time to learn who have been the chief builders of our University and to honor them; to observe with appropriate ceremonies the anniversaries of some of the most significant events; to bring together on Mount Oread in 1941 more friends and alumni of the University than have ever been in Lawrence at one time before; and, finally, to plan such publications, addresses and exhibits as may help all to a better realization of what the University has already accomplished, what it is and what it is doing now, and what are its possibilities for the future?

The Seventy-fifth Anniversary Committee hopes that every reader of these lines will begin now to plan a return to Mount Oread in 1941 for a part in the University's Diamond Jubilee Celebration.



GENERAL INFORMATION

All students being graduated are referred to the Senior Reminder for instructions.

The faculties of the University will assemble in the East Corridor of Frank Strong Hall at 6:45 p.m., both Sunday evening and Monday evening. The University Marshal is Prof. J. J. Wheeler.

In case of inclement weather on Sunday evening or Monday evening, exercises will be held in Hoch Auditorium which will be reserved for ticket holders until 7:25 p.m.

Tickets for Commencement Exercises

Reservation tickets that will admit to special sections of the Stadium, or the Auditorium where the exercises will be held in case of rain, should be obtained by those entitled to them. Tickets will not be necessary to obtain general admission to the Stadium.

GRADUATING STUDENTS. Each graduating student is entitled to two tickets to the Commencement Exercises. These will be given out Friday, June 9, and Saturday, June 10, in Room 202, Robinson Gymnasium.

Alumni receive their tickets when they register at the Memorial Union Building.

Tickets for Alumni-Senior Luncheon

GRADUATING STUDENTS. Each graduating student is entitled to one ticket to the University Luncheon. These tickets are not transferable, and may be obtained upon application at the ticket desk in Memorial Union, Saturday, June 10.

ALUMNI. Alumni are entitled to one ticket each, upon application to Prof. E. B. Dade, after having registered at Alumni Headquarters, at the Memorial Union. Arrangement for these tickets must be made before 10 a.m., Monday, June 12.

Seventy-fourth Annual

OPENING EXERCISES

and the

INAUGURATION

of

DEANE W. MALOTT

As Chancellor

**HOCH AUDITORIUM
University of Kansas**

**Friday Morning, September Twenty-second,
*Nineteen Hundred Thirty-nine***

PROGRAM

Doxology - - - - -

Led by DEAN D. M. SWARTHOUT

Responsive Reading - - - - - Psalms, 84

Led by PROFESSOR W. L. BURDICK

1. How amiable are thy tabernacles, O Lord of hosts!
2. *My soul longeth, yea, even fainteth for the courts of the Lord;*
3. *My heart and my flesh cry out unto the living God.*
4. *Yea, the sparrow hath found a house, and the swallow a nest for herself, where she may lay her young.*
5. *Even thine altars, O Lord of hosts, my King, and my God.*
6. *Blessed are they that dwell in thy houses they will be still praising Thee.*
7. *Blessed is the man whose strength is in Thee; in whose heart are the highways of Zion.*
8. *Passing through the valleys of Weeping they make it a place of springs.*
9. *Yea, the early rain covereth it with blessings.*
10. *They go from strength to strength, every one of them appeareth before God in Zion.*
11. *O Lord God of hosts, hear my prayer, give ear, O God of Jacob.*
12. *Behold, O God our shield, and look upon the face of thine anointed.*
13. *For a day in thy courts is better than a thousand.*
14. *I had rather be a doorkeeper in the house of my God, than to dwell in the tents of wickedness.*
15. *For the Lord God is a sun and a shield; the Lord will give grace and glory; no good thing will he withhold from them that walk uprightly.*
16. *O Lord of hosts, blessed is the man that trusteth in Thee.*
17. *The earth is the Lord's and the fulness thereof: the world and they that dwell therein.*
18. *For he hath founded it upon the seas, and established it upon the floods.*
19. *Who shall ascend into the hill of the Lord? And who shall stand in his holy place?*
20. *He that hath clean hands, and a pure heart; who hath not lifted up his soul into falsehood, and hath not sworn deceitfully.*
21. *He shall receive a blessing from the Lord, and righteousness from the God of his salvation.*

Lord's Prayer

Nordic Grand March - - - - - LEIDZEN

THE UNIVERSITY BAND
RUSSELL L. WILEY, Director

Hymn - - - - - Duke Street

Led by DEAN SWARTHOUT and the UNIVERSITY BAND

O God, beneath Thy guiding hand
Our exiled fathers cross'd the sea;
And when they trod the wintry strand,
With pray'r and psalm they worshipped Thee.

Thou heardst' well pleased, the song, the prayer;
Thy blessing came; and still its power
Shall onward, through all ages, bear
The memory of that holy hour.

Laws, freedom, truth, and faith in God
Came with those exiles o'er the waves;
And where their pilgrim feet have trod,
The God they trusted guards their graves.

And here Thy name, O God of love,
Their children's children shall adore,
Till these eternal hills remove,
And spring adorns the earth no more.

Presentation of Mr. Malott - - - FRED M. HARRIS
Chairman, State Board of Regents

Address - - - CHANCELLOR DEANE W. MALOTT

Song - - - - - Crimson and the Blue
Led by DEAN SWARTHOUT and the UNIVERSITY BAND

Far above the golden valley
Glorious to view,
Stands our noble Alma Mater
Towering toward the blue.

CHORUS:

Lift the chorus ever onward
Crimson and the blue,
Hail to thee, our Alma Mater,
Hail to K.S.U.

Far above the distant humming
Of the busy town,
Reared against the dome of heaven,
Looks she proudly down.

CHORUS:

Greet we then our foster mother,
Noble friend so true,
We will ever sing her praises,
Dear old K.S.U.

CHORUS:

R-o-c-k C-h-a-l-k, J-a-y H-a-w-k, K.U.

R-o-c-k C-h-a-l-k, J-a-y H-a-w-k, K.U

Rock Chalk, Jay Hawk, K.U.

Rock Chalk, Jay Hawk, K.U.

Rock Chalk, Jay Hawk, K.U.

CLASS of 1939

TEN YEAR MEETING

12:00 noon Sunday June 5, 1949

Memorial Union

Ballroom Second Floor

\$1.50 (plus tax)