

Sixty-second
ANNUAL COMMENCEMENT
of the
UNIVERSITY OF KANSAS

Baccalaureate
Services



THE MEMORIAL STADIUM
SUNDAY, JUNE 10, 1934
7:30 O'CLOCK

Program

PROCESSIONAL MARCH, Seniors "Fare-U-Well"..... J. C. McCANLES
THE UNIVERSITY BAND, J. C. McCANLES, *Director*

INVOCATION THE REV. A. A. VANSICKLE
Director of Religion, Haskell Institute

HYMN *Seymour*

Softly now the light of day
Fades upon my sight away;
Free from care, from labor free,
Lord, I would commune with Thee.

Thou, whose all-pervading eye
Naught escapes, without, within,
Pardon each infirmity,
Open fault and secret sin.

Soon, for me, the light of day
Shall forever pass away:
Then, from sin and sorrow free,
Take me, Lord, to dwell with Thee.

Thou who, sinless, yet hast known
All of man's infirmity:
Then, from Thine eternal throne,
Jesus, look with pitying eye.

Amen.

SCRIPTURE READING THE REV. C. L. HEATHERINGTON
Minister to the United Brethren Church

PRAYER THE REV. JOSEPH F. KING
Minister to the Plymouth Congregational Church

SONG, "Far, Far Away" *Finnish Folk Song*
UNIVERSITY MEN'S GLEE CLUB, HOWARD C. TAYLOR, *Director*

THE BACCALAUREATE SERMON, "The Good Life,"
THE MOST REVEREND FRANCIS CLEMENT KELLEY, Ph.D., S.T.D.
Bishop of Oklahoma City and Tulsa

HYMN *Duke Street*

O God, beneath Thy guiding hand
Our exiled fathers cross'd the sea;
And when they trod the wintry strands,
With pray'r and psalm they worshipp'd Thee.

Thou heard'st, well pleased, the song, the prayer,
Thy blessing came; and still its power
Shall onward, through all ages, bear
The memory of that holy hour.

Laws, freedom, truth, and faith in God
Came with those exiles o'er the waves;
And where their pilgrim feet have trod,
The God they trusted guards their graves.

And here Thy name, O God of love,
Their children's children shall adore,
Till these eternal hills remove,
And spring adorns the earth no more. *Amen.*

BENEDICTION THE REV. CHARLES A. PULS
Minister to the Trinity Lutheran Church

RECESSIONAL MARCH, "Olympia March" *George D. Barnard*
THE UNIVERSITY BAND

The University of Kansas

LAWRENCE

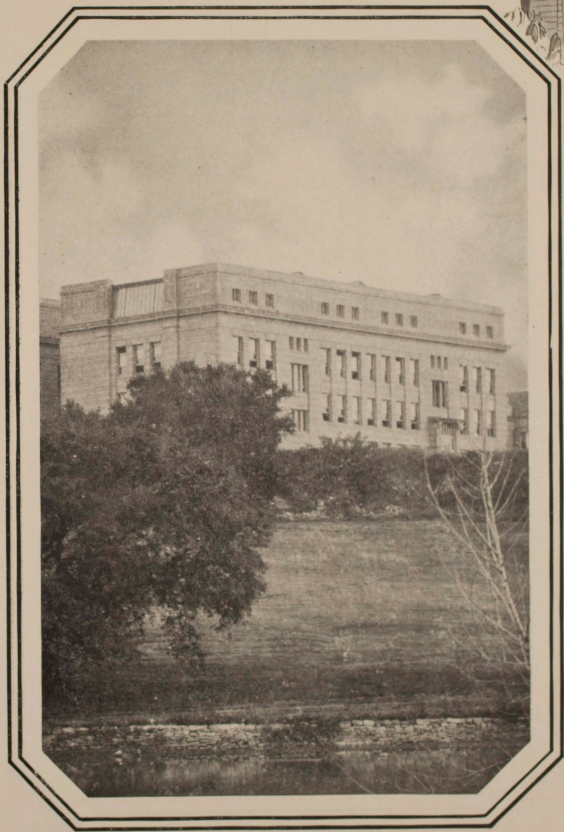


¶A few views of the University campus. ¶Above, unveiling of "Uncle Jimmy" Green Memorial, commencement, 1924. ¶Within,—Columns of Green Hall (law) with Spooner library-museum in the distance; one end of Administration building; Marvin hall, one of five buildings devoted to Engineering; Dyche museum; Robinson hall, gymnasium for students of the University of Kansas.

Green Hall



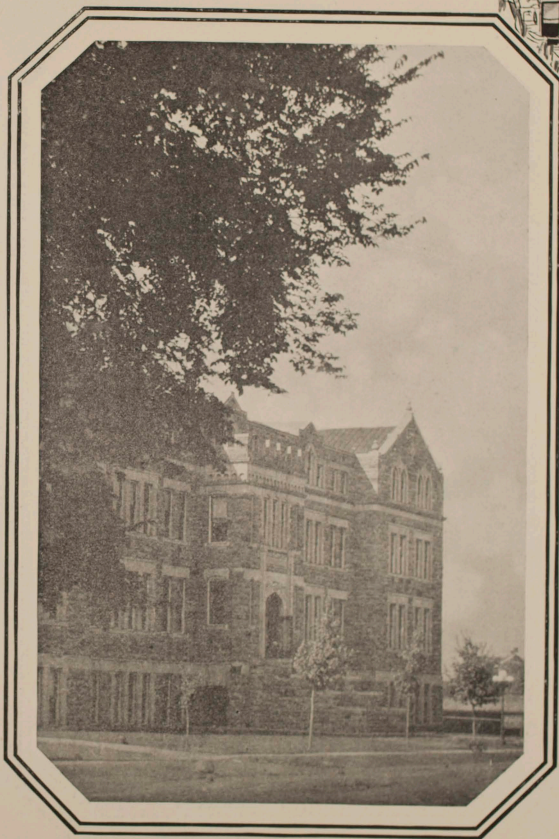
A Glimpse of Ad.



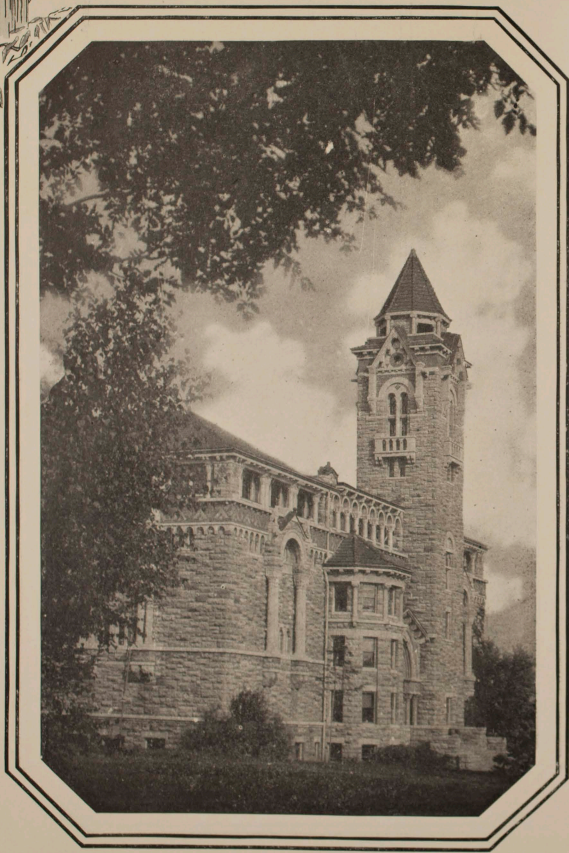
Blake Hall



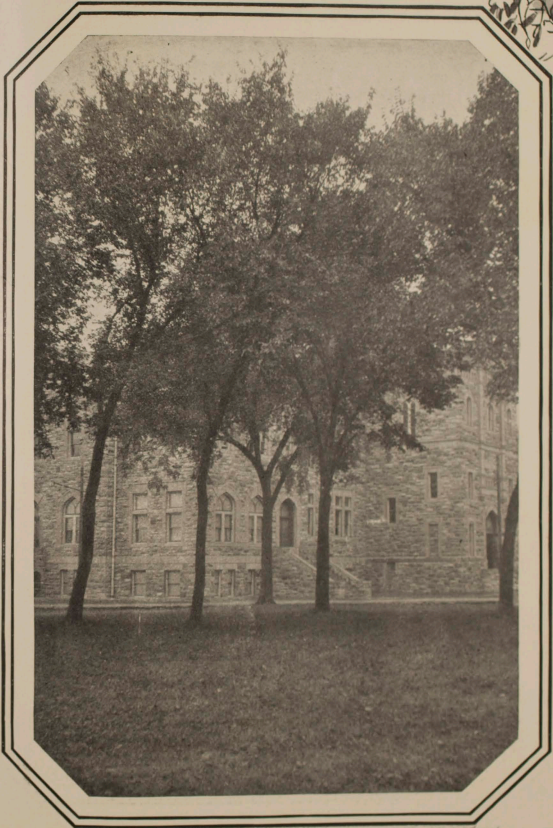
The "Engine School"



Nyche Museum



The Gymnasium





ADMINISTRATION BUILDING, UNIVERSITY OF KANSAS

Double Service

¶Work at the University of Kansas is not confined to the campus. Not only do the faculty members conduct classes in Lawrence and at the Bell Memorial Hospital, Kansas City, Kansas, but they also, through the University Extension Division, carry on classes and instruction in all parts of the state.

¶Even in the farthest parts of the state, young people who wish to carry on their studies are enrolled in the Correspondence Study Department, and are sending in their written work, and receiving it back with the comments and assistance of the instructors.

¶More than that, in six cities of Kansas last year, groups of students were organized, and to them faculty members came weekly to carry on classes in the same way as campus classes.

¶The University last year enrolled on the campus more than 5,000 students, and in its Extension service carried the benefits of University training to 1,801 more.

¶For catalogues and other information about the University, address

The University of Kansas

Lawrence, Kansas

GEORGE O. FOSTER, Registrar

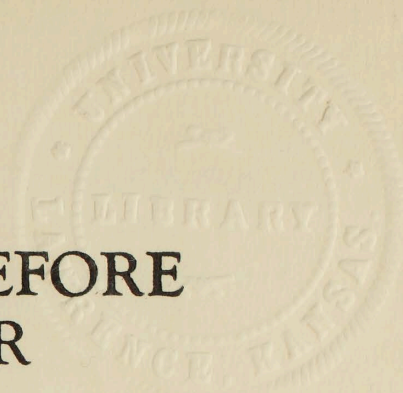
207 East Administration Bldg.

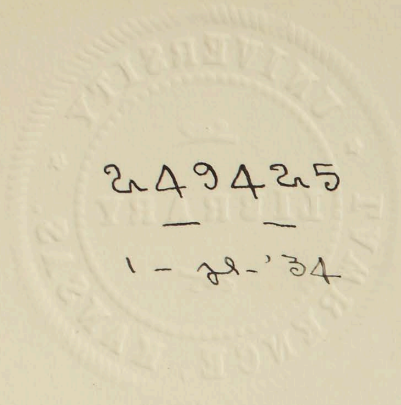
FIFTY YEARS BEFORE AND AFTER

BY
WILLIAM ALLEN WHITE



AN ADDRESS GIVEN AT THE
SIXTY-SECOND ANNUAL COMMENCEMENT OF THE
UNIVERSITY OF KANSAS, JUNE 11, 1934





249425

— —
1 - 22 - '34

Printed in the U.S.A. by the
Department of Journalism Press in the
University of Kansas

KB
EI
UN
K
W586

FIFTY YEARS BEFORE AND AFTER

THE only educational course I ever completed was that of the El Dorado High School where I was graduated in 1884, fifty years ago. Today fifty years after, we graduate from our Kansas colleges more students than were graduated from all the Kansas High Schools fifty years ago. And in that far day it was a rather more unique distinction to be a high school graduate than it is to be a college graduate today. So times have changed. Today we have about the same number of citizens in Kansas that were here fifty years ago. We have distributed our wealth so equitably that we stand in a class by ourselves in the number of college graduates we turn out. We have used taxation as an agency of distributive justice to provide not a mere common school education; indeed not only a high school education, but a college and professional education available to all the youth in the state. Fifty years ago to have envisioned what we are doing today in Kansas in the matter of education, public health, highways, social work, the regulation of various agencies of commerce for the public welfare, would have made our fathers in 1884, and your grandfathers, most uneasy. To have told them what Kansas is doing, what the various municipalities of Kansas are doing, what the nation is doing to help common men to enjoy the fruits of the civilization in the commonwealth which their common work has built, would

have made the founding fathers of Kansas cry out with angry amazement at the paternalism of a socialistic order. For the founding fathers were trudging through hard ways to the stars. My generation, the high school class of 1884 in Kansas fifty years ago, the sons and daughters of the young men who crossed the prairie as of old their fathers crossed the seas, were told by implication as we walked out of the high school in that day, that the job of state building was done and well done; that our task was to preserve what we had. Edward Bellamy had written a book called "Looking Backward," filled with what his generation regarded as prophetic folderol. Yet out of his vision for the young men of yesterday we elders today dream our dreams. Fifty years from now, some of you, dearly beloved, may stand where I am standing here and you may tell the class of 1984 that at your Commencement an ancient of days from the Class of 1884 stood up and told you of the visions of the young men which were realized in his dreams. The span will be one hundred years. It is something to think about. But how far—how far will be your dreams as old men in 1984 from the visions we saw as young men in 1884!

Yet we come with no pride of achievement in what our generation has done. Looking over the work of our hands which we lay at your feet today, I should say, speaking broadly, that we have dumped at the portals of your life one of the most elaborate, metallic scrap heaps that the history of civilization has recorded. A gaudy bauble it is. It shimmers with the simulation of bright reality, this modern civilization that we leave on your doorstep. It roars, it clatters, it

shrieks and hums like a going concern. It will do almost anything but work. It is jammed—may I say in these classic haunts, jimmed, gypped and some of it is ready to be junked.

Five years ago we thought it was hitting on all 12 cylinders, a gorgeous mechanism headed straight for the millennium. We hired a competent engineer to put a few gadgets on it! two chickens in every pot, two garages on every lot. He was a good engineer. He carried in his kit all the accouterment needed, and under his hat all the experience required to fill the order. But scarcely had he touched it before the machine blew up under his hands and here it is. No one knows why it was or what it is. But it's yours. And when you put it together again, maybe you will have a lot of pieces left over and perhaps you won't have enough to go around. It will be a sweet job for your generation. Take it from the Class of 1884 with our felicitous condolences. And may we cheer you on with the cynical hope that you will have the old bus going by 1984 so that you can brag to our great great grandchildren how you saved the world from chaos.

Let us for a moment consider the chaos that is facing you. You, of all the classes who have come out of our colleges with eager eyes and shining countenances, must face the fact that you are confronting a new thing in the world, the first definite challenge to democracy. Liberty, for a thousand years, has been assumed as the goal of humanity. Now men say—not merely by the millions, nor in limited hundreds of millions, not in minorities but in vast majorities, half a billion east of the Rhine—say democracy is dead, liberty is a mocker. Rub your eyes, Class of 1934, and

face this challenge. What are you going to do about it? The western fringe of Europe, France, the Netherlands, the Scandinavian countries and the English speaking commonwealths still champion democracy, still hold that freedom is a worthy aim for humanity. But from the Rhine to the Pacific under the dictatorships of Italy, of Central Europe, of Russia, humanity is rallying around tyrants who deny the value of our ancient rights. Why bother with free speech, they cry, when the drums and guns brook no reply? Why fiddle around with the delays of parliamentary government when the ukase and the army can push the wisdom of the few to its quick achievement? Why waste time with a trial by jury, with a writ of habeas corpus, when the police and the private armies of the dictators can establish order with no nonsense about it? Why waste money on the ballot box, proclaim the tyrants, Mussolini, Stalin, Hitler and their kind, when authoritative government goes to its purpose as an arrow from the bow? So speak the new despots of the modern world at the bier of democracy. So do they brush aside a thousand years of human aspiration as though the noble vision of free men in a free government was a legend of some intrigue in Nineveh or Tyre. Is democracy dying? Don't think, young men and women of 1934 that you can evade the searching question that is shaking the world.

America is facing a crossroad crisis in which she may have to choose between two tyrannies or to fight again the old fight, the ancient battle of our race, the fight for freedom. Down one fork of the road we see looming before us a potential plutocracy embattled

as an army with banners. Here stand those who control the machinery of the machine age. They are not necessarily owners. They represent on the whole merely a dominant minority, small groups of stockholders. But they are entrenched. They have possession of the machines, the super-looms, the giant forges, the rails, the pipes, the wires, the flickering airways through the night that span the continent. They control the mines and the production of all the basic commodities. They are amiable despots for the most part, benevolent in their mellower moments, greedy only by virtue of their appointed task, fiendishly acquisitive, without real need or wisdom, for their voracious appetites. They are merged where they are not actually physically amalgamated by a growing class consciousness and the arrogance that comes with power. They would rule us under the altruistic despotism of a financial fascism. To maintain its reign sooner or later that fascism will have to cramp our liberty, shut off free utterance in the forum, on the air, from the press. Moreover in the guise of suppressing demagogues and agitators, this despotism of unchecked capital will have to curtail the rights of trial by jury, the writ of habeas corpus and naturally they will control the courts. If they are left to their own devices under their cherished doctrine of *laissez faire* in government, some time in the decade of the forties these amiable plutocrats will demand the attention of the Class of 1934. What are you going to do about it? Are you going to forget Runnymede, Cromwell, Bunker Hill, Jefferson, Lincoln and go to Mussolini, or Hitler, or just as bad, to Stalin? Do you propose to fight for the middle

course or perhaps lie supine and let the Juggernaut roll over you?

And down the other fork of the road, what is the prospect? Behold the politician. So long as he is what he is and what he must be under the democracy as it is—an average man—keen to please an average electorate, government will be what it is. Let us consider for a moment this politician. Does he hold his place in representative government because he embodies the highest wisdom of his electorate? He does not. He is in power because his intelligence quotient is the greatest common divisor of a not too quick-witted constituency. These constituents demand a certain amount of back-slapping, hand-shaking, baby-kissing, time-serving, job-getting to deceive them into voting for him. So, because he is really of the people and rather dumbly for the people he gets by with the people. He is not a bad lot. He will go as far in his patriotism as the tether of politics will let him go. He is honest enough, money-honest. But remember this, when we award the highest prizes of our American civilization to the keenest, most acquisitive men, politics, whose rewards are comparatively slight, gets on the whole our second rate and third rate citizens. So we find too often after the ballots are counted we have picked a dud. Yet as an escape from the menacing plutocracy, down the righthand fork of the road, we Americans are seriously considering handing over either for drastic regulation, stringent control, or actual ownership the vast complicated, delicately intricate machinery of finance and commerce—to whom? Well, to our American politicians who in their better moments are statesmen but in

times of crisis too often turn demagogues. The prospect is appalling. With all the power that must come to men in government when these place-hunting politicians assume the added function of industry and banking; what then will become of liberty? Nothing in these remarks should be construed directly or indirectly as a criticism of the New Deal. On the whole and by and large I am for the New Deal. It is neither Communist nor Fascist. Much of it is necessary. All of it is human. And most of it is long past due.

Will they not have the same arrogant sense of their importance that will inevitably make tyrants out of the plutocrats? Will not our politicians taking under the aegis of government, the business of production and distribution of basic commodities, either by too drastic regulation, by stringent control, or ownership, resent criticism, curb debate and degenerate this government into some sort of proletarian dictatorship or hierarchy of political power?

This is what I mean when I say to the Class of 1934 that sooner or later as you walk into the middle decades of this century you may meet the challenge to democracy. We have left you this amazing industrial, financial, political set up and you must fight for your liberties if you hold them. You must line up in the next decade for or against the forces of freedom. You must choose or abandon the ideals that have been motivating men in the Western world for a thousand years. It is a new challenge but an old struggle.

Let us restate the question: Can freedom live in the machine age? A machine age presumes the mass production of things, goods, material service, things which formerly were produced by individuals for other

individuals, chiefly neighbors. Mass production requires mass distribution. The individual worker and the individual consumer are thousands of miles apart. To make ends meet between the consumer and the producer requires channelling, stern and inflexible. If those who control the machine make the channels, they are ruthless. If society under government attempts the channelling, the channelling becomes regimentation. Even now, even in America, over large areas where capital invested in coal, in textiles, in steel, in sugar, in citrous fruits dominates a region, the democratic liberties always are threatened. Free speech, a free press, the right of assemblage, the writ of habeas corpus, these liberties wilt and wither as the owners of machinery control the courts and the police. Democracy languishes. Freedom disappears before the machines. Would freedom thrive more sturdily when politicians control the machine than it thrives now in those regions where the machine controls the politicians? I don't know. I check the question up to you, this challenge of the age: Can liberty survive in the machine age? Today it is true we still have liberty. But the machine is not functioning. The machinery of production and distribution of which we were so vain ten years ago is having trouble with its transmission.

So therefore, young ladies and gentlemen, as you walk around this tinselled, splendid omnibus of stalled vanity which we are leaving to you, while you are making it refunction as your civilization, let me ask you what you propose to do about it? What cams, cogs, levers, wheels, pulleys and contraptions of renovation, invention or repair do you propose to use

in putting the old bus on the road? I can imagine your saying to us who wrecked it: "Where is your tool chest? What real heritage have you left us?" A fair question that; one that deserves a frank answer. In spite of all the progress we have made in five decades, since 1884, in spite of the surface sheen that we have given to our external civilization, it seems to me the heritage which my generation brings to you is precious little, in the net of it.

Is it a rich and prosperous nation?

No, our riches and prosperity will confuse you more than if we had brought you a leaner land.

Is it this interminable labyrinth of machines stretched on wires and through pipes and over rails and around lighted airways across the rich green earth of spring?

No, it is not industry. That powerful engine is a Trojan horse out of which will stalk troubles to threaten your progress in the next decade.

Is it all these schools and colleges? No.

Is your heritage in the long hours of leisure which your fathers never knew?

I think it is none of these. All of them must be socialized. All of them must be made over into something real and true. It seems to me that we have brought you only the pure gold of our ancient liberties.

"All we have of freedom, all we use or know,
This our fathers bought for us, long, and long ago.
Ancient right unnoted, as the breath we draw,
Leave to live by no man's leave, underneath the law."

Now—let me list those simple golden nuggets which are your heritage, they are the democratic liberties that have been established on this continent after three hundred years of struggle. Here they are: The ballot box, the right of free utterance in every form, through the press, through free speech, through the right of assemblage and petition, the right of trial by jury, and of the writ of habeas corpus. That is the galaxy of liberties which insure to a definite legally ascertained majority of the American people “the consent of the governed”—simple, primitive things. Yet as you keep them or lose them will you win or fail in the battle of your generation for American freedom.

You may ask how shall we use this democratic process, these rights and liberties which are our heritage out of the America of yesterday. I don't know. I distrust anyone who claims that he does know. The most dangerous enemy of democracy today is a man with a rigid plan either for recovery or for reconstruction. For a man with a rigid plan is liable to feel that the adoption of his plan is more important than the retention of liberties which may endanger it. Therefore give honest consideration to any plan that in its adoption does not require the suspension of American liberties. Do not be too sure what plan will work and what will not. Try it. America has established herself by keeping an open mind and never fearing failure. Indeed, we have mapped our course in the long plebiscite of many failures. We groped our way, almost leaderless after Yorktown, then wrote our Constitution. After Appomattox, we were two, possibly three decades stumbling in a morass of ca-

lamity and misrule but we did not turn to a dictator. Democracy saved us whole, the slow sure wisdom of the people, the American spirit whatever it is, rising triumphant out of disaster. Let that be your guiding star.

In the struggle of the next decade they may tell you force is more potent than reason to establish the new order which they propose and if therefore they insist upon suspending, or for the moment modifying any liberty required for the full, free function of orderly parliamentary government under democracy, there, with all my heart I beg of you to say no. To compromise there, is treason. For however fair and fine a compromise the passing tyrant may hold out, when he would abrogate the reasonable process of democracy, still he is establishing tyranny. No man has a right to play Providence with his neighbor's liberty, no matter how noble and apparent the benevolence may seem under which the amiable tyrant would establish his despotism. No tyranny can be erected for the common good. The power that comes with tyranny breeds the arrogance of tyranny. And tyrants are always tyrants. Also remember this, in taking the meager heritage that we bring you, don't be fooled by the tyrant when he prates too glibly about this common good which he would establish by a rule of force. The common good is not entirely a thing of bread and butter, of warmth and shelter. It is something more. Our Republic was not erected to give men a full stomach and a warm back. Our Nation was set up here in the wilderness for no mere material end or aim. Whatever material gain we have made is an incident of the quest for justice, an incident

of the self-respect that comes with freedom. Material welfare is an inevitable incident of the triumph of justice, but still an incident. Let me read the Preamble to our Constitution, which, more than any other document sets forth the American aspiration; listen:

“We, the people of the United States, in order to form a more perfect Union, establish justice, insure domestic tranquility, provide for the common defense, promote the general welfare and . . .

—here is the climax—

“secure the blessings of liberty to ourselves and our posterity, do ordain and establish this the Constitution of the United States.”

A Kingdom not made with hands. No material end and aim inspired our fathers when

“They brought us freedom at no little cost.
Wherefore we must watch the gain, lest our gain be lost.”

Tyrant Kings will come disguised as prosperity, as economic security, as regimented super-nationalism. But beware this: The King is he, whoever he may be, Fascist or Communist, who tries to tear down our liberties and offers us material security in their place. If you heed him, this tyrant King, sooner or later shall you awaken to stark reality—to despotism and its inevitable injustice and misrule.

So, tonight, we bring you out of our generation, fifty years ago, our inheritance. In America it is still undefiled, the inheritance of liberty under a democratic republic. No man will minimize the gross injustices of our modern world. They cry to Heaven for redress. And you must redress those gross economic

maladjustments. Don't be fooled by smoke screens behind which men, clamoring for the Bill of Rights are digging entrenchments for wicked economic wrongs. Be sure that under the democratic process you can and will make the drastic social, economic and industrial adjustments needed.

Force will only bring new evils in its train. Even now the doctrinaires of a strong, stern government are beginning to tempt you as you step forth from the serenity of this sheltered life. Sirens will lure you to take their panaceas, the soft, soothing syrup of economic security. The Fascists will hail you, the Communists will beguile you—both tyrants! But hold fast to this your heritage, the self-respect of an American citizen free born, unshackled by the old oppressors in their new name.

*"How so great their clamor, what so e'er they claim
Suffer not the old King under any name.
Here is naught unproven—here is naught to learn,
It is written what shall fall, if the King return."*

Abideth these three—Faith, Hope, Democracy. And because Democracy is Christianity in process of being institutionalized, and as love is the foundation of the philosophy of Jesus, we may well say, And the greatest of these is—Democracy.



The University of Kansas

through its

Board of Regents, Chancellor
and Faculties

extends a most cordial

invitation

to all

Alumni, Former Students and
other friends

to be present

at the

Sixty-second

Annual Commencement

June eighth to eleventh

nineteen hundred

thirty-four

University of Kansas

UNIVERSITY
LUNCHEON

THE SIXTY-SECOND ANNUAL
COMMENCEMENT



THE MEMORIAL UNION

MONDAY, JUNE 11, 1934

12:15 P. M.

Guests of Honor Today



- THE CLASS OF 1874
MRS. IDA BLOOD HASSELMAN
MISS HANNAH OLIVER

- THE CLASS OF 1884
HALF-CENTURY REUNION

- THE CLASS OF 1909
QUARTER-CENTURY REUNION

GROUP OF ALL STUDENTS BEFORE 1880



THE GROUP OF 1889, 1900, 1901, 1902



THE GROUP OF 1918, 1919, 1920, 1921



*This menu is folded double to leave
space for signatures of classmates.*

Menu



LIME ICE



CHICKEN LOAF

POTATO SALAD



ROLLS AND BUTTER



CHILLED TOMATOES



APPLE PIE A LA MODE



COFFEE

TO K. U. IN ABSENCE

Adapted from verses by R. W. NEAL, '98
Music, "Fair Harvard"

Gray halls! In our morning, ere springtime was fled,
Bright haunts where our fancy was led,
The home of our Muses, the hills of our Gods,
Where spirit breathed life into clods—
:| Gray piles, and deserted though thronged round with
feet,
In exile, in absence, we greet. |:

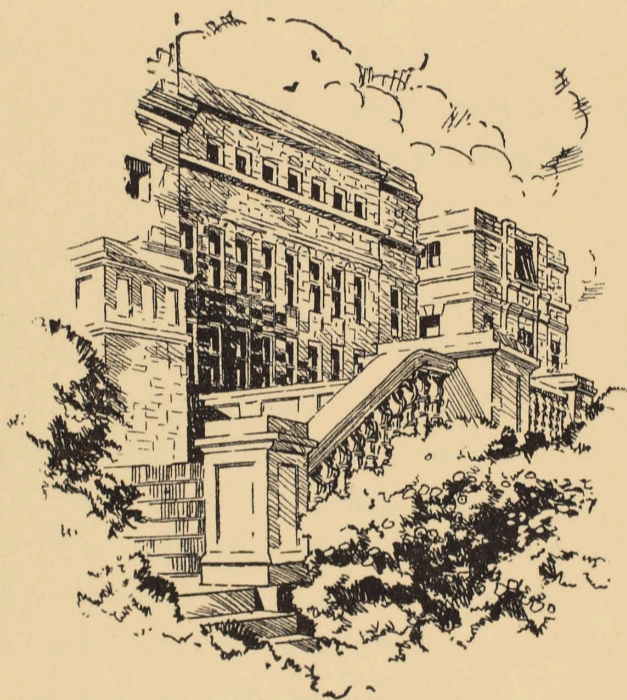
On pedestaled hillside faith-reared and high set,
O Symbol, our hearts hail thee yet:
The voices about thee, alas! are too new,
Their farewells too young to be true.
:| O mistress of longing, young thoughts gladly stray,
Exiled hearts turn back on their way. |:

Glad birth-place of love-dreams, fair nourice of truth,
Clings sweetly about thee thy youth;
Green ivy enwraps thee, deep valleys embrace
In riches thy rock-founded base.
:| Yet thy beauties are fairer as seen through the years,
Since exile has taught our hearts tears. |:

High city of learning, dear past of our hopes,
Tho' children be climbing thy slopes,
Tho' they hail thee with clamor and laud thee aloud,
Tho' they leave thee, with sadness o'erbowed,—
:| Yet changeful such clamor, such sorrow too brief,
Our exile has taught our hearts grief. |:

1934
62
#62

SIXTY-SECOND ANNUAL
COMMENCEMENT
UNIVERSITY OF KANSAS



JUNE THE ELEVENTH
NINETEEN HUNDRED THIRTY-FOUR
AT 7:00 P.M.

● For the first time in its history, the University of Kansas welcomes, at this Commencement, graduates of sixty years ago:

*Mrs. Ida Blood Hasselman, of Indianapolis, and
Miss Hannah Oliver, associate professor emerita
of Latin,*

as guests of honor at this Commencement. ● When they received their degrees, June 10, 1874, the University of Kansas had but two buildings, of which Fraser Hall was the newer and the chief. Today, an impressive panorama of buildings crowns the hilltop before you, with still others forming the University's medical center at Kansas City. ● When Miss Blood and Miss Oliver received their diplomas there were enrolled 173 students, including the preparatory department; today, the University has as many as 3,700 students in residence in its fall term, with added thousands in the summer session and extension classes. ● The graduates of 1874 received instruction from a faculty of 11 members; now there are 215 members of the full-time faculty, and as many more special lecturers and part-time assistants. ● In its sixty-two Commencements, the University has awarded 19,550 degrees and certificates to 16,330 different persons.

THE ORDER OF EXERCISES

PROCESSIONAL MARCH:

"Triumphal March" (A Senior Victory) - - - J. C. McCandles

THE UNIVERSITY OF KANSAS BAND

J. C. McCandles, *Director*

INVOCATION: - - - - - THE REV. CHARLES A. ENGVALL
Minister to the Unitarian Church

ADDRESS:
"Fifty Years Before and After" - - WILLIAM ALLEN WHITE
Editor of the Emporia Gazette

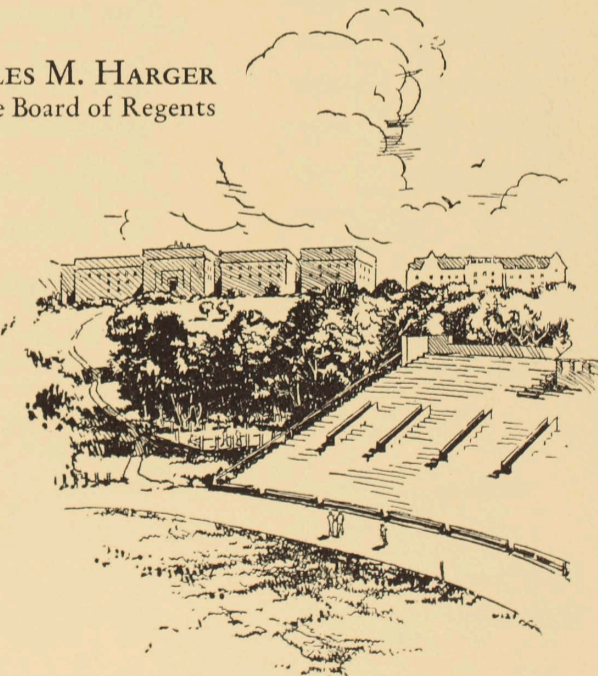
GREETINGS: - - - - - THE HONORABLE ALFRED M. LANDON
Governor of Kansas

ADDRESS TO THE CLASS AND
CONFERRING OF DEGREES: - - - - - ERNEST HIRAM LINDLEY
Chancellor of the University of Kansas

PRESENTATION OF DIPLOMAS:
THE HONORABLE CHARLES M. HARGER
Chairman of the Board of Regents

BENEDICTION:
THE REV. CHARLES W. THOMAS
Student Minister to the First Baptist Church

RECESSIONAL MARCH:
"Grand March from 'Rienze'" - Wagner
THE UNIVERSITY OF KANSAS BAND



ORDER OF THE ACADEMIC PROCESSION



THE UNIVERSITY MARSHALS

THE CHANCELLOR AND THE GOVERNOR

THE VICE-PRESIDENT AND THE SPEAKER

THE BOARD OF REGENTS

DEANS OF THE SEVERAL SCHOOLS

FACULTIES OF THE SCHOOLS

THE CANDIDATES FOR DEGREES

THE GRADUATE SCHOOL

THE SCHOOL OF MEDICINE

THE SCHOOL OF LAW

THE SCHOOL OF BUSINESS

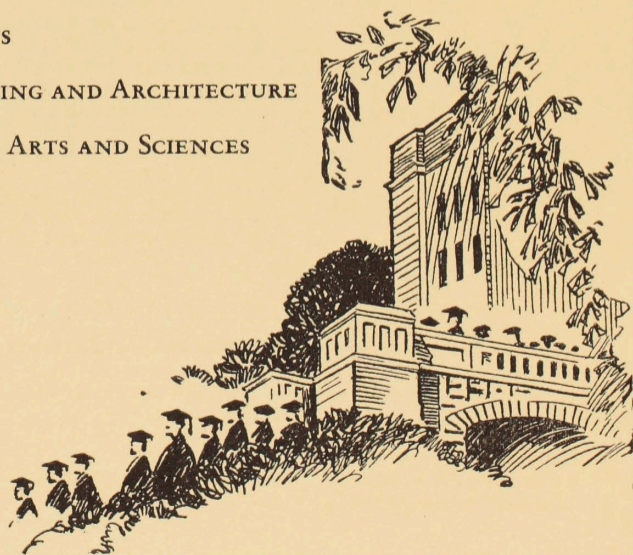
THE SCHOOL OF EDUCATION

THE SCHOOL OF PHARMACY

THE SCHOOL OF FINE ARTS

THE SCHOOL OF ENGINEERING AND ARCHITECTURE

THE COLLEGE OF LIBERAL ARTS AND SCIENCES



CANDIDATES FOR DEGREES

COLLEGE OF LIBERAL ARTS

Presented by PAUL B. LAWSON, *Acting Dean*

Bachelor of Arts

- | | | | |
|--|---|---|--|
| *LUCILLE ALBRIGHT
Hutchinson | LOBERTA BRABANT
Pleasanton | ROBERT LA DILL
Lawrence | ROBERT C. GRIBBLE
Ashland |
| LAUREL CHARLENE ALLEN
Kansas City, Mo. | WILLIAM B. BRACKE
Atchison | DELLA DEEN DODGE
Salina | MELVIN EUGENE GRIFFITH
Lawrence |
| LILA MAE ANDERSON
Lawrence | VIRGINIA KING BRENTON
Kansas City, Mo. | *MARY LUCILLE DRAKE
Topeka | †PHILLIP GUSSION
Quebec, Canada |
| THEKLA BERYL ANDERSON
St. Joseph, Mo. | *MADELYN JANE BRIDGES
Kansas City | *HELEN SHEILA DRENNAN
Kansas City | MARGARET HAGEN
Ellinwood |
| WALLACE M. ANDERSON
Iola | DOROTHY MARIE BRINKER
Wichita | JEAN COLDWELL DUNN
Arkansas City | *LUCILE E. HAMMONS
Lawrence |
| ELAINE VIVIAN ANDREWS
Kansas City, Mo. | LYDIA ANNA BROCKER
Paola | DONNA LEE DUNWOODY
Kansas City, Mo. | RUTH ANNA HARDACRE
Kansas City, Mo. |
| *VIRGINIA E. ARNOLD
Chanute | *ELLA ELIZABETH BROWN
Lawrence | *SISTER MARY D. EAKES
Leavenworth | HARRY HARKNESS, Jr.
Burlingame |
| CLARENCE WILLET ASLING
Abilene | *LEAHMAE BROWN
Kansas City, Mo. | *MARY NAOMI EDWARDS
Sylvia | *CECIL D. HARRIS
Hoxie |
| HELEN ALICE MARY ASTON
Lawrence | MADRE BROWN
Wichita | WALTER E. ELDER
El Dorado | MARY LOUISE HARRISON
Kansas City, Mo. |
| WILLIAM H. AVERY
Wakefield | *MUSSETTA HAZEL BROWN
Lawrence | PAUL HIATT ELLEMAN
Columbus | ELMER F. HARTMAN
Lawrence |
| F. ERNEST AYERS
Estancia, N. M. | MARTHA BROWNLEE
Hutchinson | *HOWARD GOLDEN ELLIS
Pleasanton | ELMIRA EMERSON HASSIG
Olathe |
| CATHARINE E. BAGLEY
Kansas City, Mo. | *R. WILL BURNETT
Lawrence | ERNEST NED EMBRY
Kansas City, Mo. | *HARRY E. HAYES
Kansas City |
| WILLIAM THORNE BAILEY
Kansas City | *RUTH CAROLINE CADY
Lawrence | ROBERT KERSEY ENTRIKEN
McPherson | *LUCILE A. HEKELNKAEMPER
Atchison |
| ELIZABETH EMILY BAISINGER
Arkansas City | MARTHA ALLEN CAMERON
Lawrence | GENE BEAL ERWIN
Garnett | MORRIS DWIGHT HILDRETH
Coffeyville |
| FRANCES M. BALLARD
Attica | *EVALYN E. CARPENTER
Lawrence | ARTHUR WILBUR EVANS
Eureka | †EMMA JEAN M. HILL
Lawrence |
| ELODIE BANCROFT
Ottawa | *BERTRAM CARUTHERS
Kansas City | EVERETT B. EVERHART
Lawrence | LAURA ELIZABETH HINSHAW
Lawrence |
| CHARLOTTE FELICE BANGS
Winfield | WILBUR GRIFFIN CAUBLE
Benedict | JAKE PFISTER FARNEY
Kiowa | JAMES KOHLAND HITT
White Cloud |
| NADYNE BARKER
La Harpe | HELEN GENEVA CHRISTMAN
Topeka | J. ELDON FIELDS
McPherson | MARGUERITE N. HOLLECKER
Kansas City |
| ROBERT H. BARNHART
Minneola | ALYCE JEAN CLARK
Topeka | MEREDITH FAXON FILKIN
Kansas City, Mo. | HOWARD SPENCER HOOVER
Lawrence |
| SAMUEL BREWSTER BARTLETT
Ellsworth | DOROTHY VIRGINIA CLARKE
Lawrence | FRANCES MARIAN FINK
Kansas City, Mo. | *REED KELSEY HOOVER
Independence, Mo. |
| WALTER EMERSON BAXTER
Lawrence | LOUISE CLARKE
Lecompton | *ARTHUR RAYMOND FLICK
Stockton, Calif. | DONALD L. HOPE
Lawrence |
| *VELMA TERESA BEARD
Kansas City, Mo. | ARTHUR LEE COIL
Holtan | DOROTHY FOSTER
Bartlesville, Okla. | SUSANNA GARNETTE HUGHES
Lawrence |
| †MARION BEATTY
Kansas City | SIMON P. COLE
Kansas City | BLANCHE C. FOUSHEE
Tulsa, Okla. | *WILBUR EUGENE HUMPHREY
Lawrence |
| SARAH M. BEAUMONT
Kansas City | CHILES C. COLEMAN, III
Junction City | MARY ALENE FULTON
Kansas City, Mo. | FRANCES CAROL HUNTER
Lawrence |
| BEVERLY LUCILE BERNIS
Peabody | ALBRIGHT COLLINSON
Winfield | *JACK W. GALBRAITH
Kinsley | JANET HURD
Abilene |
| LOUISE ERMORINE BEVERLY
Sylvan Grove | CAROLYN COMBE
Kansas City, Mo. | *PAULINE E. GALLAGHER
Kansas City, Mo. | BERNICE M. HUTCHINS
Ottawa |
| *WILLIAM F. BLAIR
Lawrence | NANCY WILCOX COOMBS
Lawrence | ROBERT E. GARD
Iola | *MARGARET INCE
Lawrence |
| RUTH ELIZABETH BLAUL
Burlington, Iowa | ALLEN JOSEPH COUGHENOUR
Kansas City, Mo. | *JOHN W. GILCHRIST
Kingman | GERALDINE ELLEN IRION
Junction City |
| ROBERTA VIRGINIA BLINN
Hutchinson | JAMES MONROE COX
Lawrence | HELEN JO GLEESON
Kansas City, Mo. | *BARBARA ISBELL
Kansas City |
| WILLIAM LELAND BLIZZARD
Rocky Ford, Colo. | LAURA ALICE CUNNINGHAM
Lawrence | *KERMIT E. GOODGER
Belleville | JESSAMINE L. JACKSON
Lawrence |
| THAYER M. BOARDMAN
Kansas City, Mo. | DOROTHY MAE DAVIS
Peabody | VIVIAN ELIZABETH GOULD
Parsons | FRED WILSON JEANS
Kansas City, Mo. |
| * Assigned to class of 1933 | *ALICE MAY DeFOREST
Lawrence | *DOROTHY MAY GREEN
Abilene | ELNORA BURGESS JOHNSON
Kansas City |
| Assigned to class of 1932 | *MAXINE DEVLIN
Turon | MARGARET C. GREGG
Topeka | HARRY FRANKLIN JOHNSON
Topeka |
| † Assigned to class of 1931 | GRACE MILDRED DeWEESE
Lawrence | | |
| Assigned to class of 1930 | | | |

KEITH WHITAKER JOHNSON
Eureka
OLIVER CARL JOHNSON
Osage City
BENITA LUCILE JONES
Coffeyville
ELIZABETH RUTH JONES
Neodesha
MINNIE MILDRED JONES
Highland
RICHARD C. JONES
Kansas City, Mo.
WILLIAM E. JONES
Kingfisher, Okla.
*MARVIN E. JORDAN
Glasco

ILMA MAE KENNISON
Lawrence
VALLEY RUTH KIMBALL
Easton, Mo.
ESTIL JOSEPH KIOUS
Norcatour
VIRGINIA LEE KISTLER
Salina
*JAMES REUBEN KNIGHTON
Lawrence
ARNOLD F. KRETZMANN
Sylvan Grove

*JOHN BRANCH LaDUEx
Stilwell
*MARION LAKE
Kansas City
EULESS DEAN LANDIS
Osawatomie
LOGAN J. LANE, Jr.
Caldwell
EDGAR BLOCH LANGSDORF
Topeka
JANE LOUISE LaPIERRE
Kansas City, Mo.
PAULINE LAPTAD
Lawrence
ONA MAE LARNER
Oskaloosa
LILA ALICE LAWSON
Lawrence
DOROTHY ELIZABETH LEIB
Kansas City, Mo.
ESTHER VIRGINIA LEIGH
Lawrence
ELIZABETH MAE LEWIS
Lebo
*EUGENIA JOANNE LEWIS
Overland Park
WILLIAM CHARLES LEWIS
Kansas City, Mo.
LUCILE A. LIBEL
Wathena
PARMER B. LINDSAY
Lawrence
CHESTERMAN CAIN LINLEY
Lawrence
MENELAUS FRANK LITRAS
El Dorado
*WILBUR STUART LONG
Lawrence
ROWENA E. LONGSHORE
Kansas City, Mo.
EMILY DUNLAP LORD
Emporia
JACOB MERLE LOUGH
Norton
ELEANOR JANET LUCAS
New Rochelle, N. Y.
RALPH ARTHUR LUDWICK
Glasco
*MAXINE PAULA LUTHER
Cimarron

* Assigned to class of 1933
† Assigned to class of 1931
§ Assigned to class of 1929

RACHEL MADDUX
Wichita
*MARY MADISON
Dodge City
HERMAN ERNEST MAI
Russell
FRED ALBERT MALO
Hammond, Ind.
KATHERINE H. MARION
Pittsburgh, Pa.
JEANNE L. MARTIN
Kansas City, Mo.
DAN C. MATTHEWS
Kansas City
NICHOLAS MAYRATH
Dodge City
CHARLES F. McCAMISH
Kansas City
MINNIE NAOMI McDANIEL
Muskogee, Okla.
*MORRIS DONALD McFARLAND
Kansas City, Mo.
†ETHYLBERT FRANCES McGEE
Kansas City, Mo.
WANDA McKNIGHT
Kansas City
*WILLIAM KLAHR McNOWN
Lawrence
MARGARET MAY MELLOTT
Kansas City
FRANK CLUXTON MELONE
Lawrence
M. DAVENNA MELTON
Kansas City, Mo.
FREDA MAE MERRICK
Troy
PERRY DAY MERRILL
Coolidge
RAY MILLER
Latham
STANFORD MILLER
Kansas City, Mo.
WALTER CONRAD MILLER
Kansas City
*ROBERT LEE MILLS
Everest
CHARLES F. MITCHELL
Coffeyville
FORREST JONES MOORE
Kansas City, Mo.
DOROTHY EVELYN MORGAN
DeSoto
*ROBERT JOHNSON MOUNSEY
Medicine Lodge
EDYTHE ELLA MULVEYHILL
Kansas City
MARY ELIZABETH MYERS
St. Joseph, Mo.

ANNA LUCILE NESSELRODE
Bucyrus
LOUELLA GRACE NEWELL
Lawrence
ARIAN LUCRETIA NEWMAN
Axtell
*MILLER NICHOLS
Kansas City, Mo.
WILLIAM R. NOBLE
Hays
BETTY JANE NUZMAN
Ottawa
†CHARLES GRATTON OAKES
Kansas City, Mo.
*HELEN MAURINE O'MALLEY
Plattsburg, Mo.
GRETCHEN ANNE ORELUP
Lawrence

CURTIS V. PACKARD
Lawrence
THOMAS PAGE
Topeka
RUTH PARMENTER
Kansas City, Mo.

JAMES R. PATTERSON
Paola
CAROL HAINES PEARSON
Edwardsville
LOIS KOUNS PEARSON
Edwardsville
*ROSCOE SHERMAN PEBLEY
Kansas City
LAWRENCE R. PENNER
Lawrence
GLENN R. PETERS
Cameron, Mo.
SHELLEY FRANCIS PETERS
Kansas City, Mo.
JACK W. PFEIFFER
Parsons
C. KERMIT PHELPS
Topeka
WILLIAM ELVIN PINE
Lawrence
*LOUIS HENRY PLUMMER
Kansas City
*M. J. POPPEN
Burr Oak
LETHA MARIA POTTER
Leavenworth
CLIFFORD ELTON POWELL
El Dorado
*MARY BELLE PROWELL
Lawrence
JOSEPHINE L. PYLE
Clay Center
WILLIAM H. RAMEY
Protection
MIRIAM REAGOR
Augusta
MAURICE SMYTHE RICE
Paola
LEWIDA CORINNE RICHARDS
Manhattan
§LAURA ALBERTA RILEY
Clayton, N. M.
*BURTON CLIFFORD RISSER
Parsons
†GORDIUS RITTER
Iola
*IRMA LOIS RIZLEY
Lawrence
*EDWIN N. ROBERTSON, Jr.
Concordia
REINE RUCKER
Sabetha
I. VIRGINIA RUF
Kansas City, Mo.
*MARJORIE FRANCES RUMBLE
Lawrence

MARY E. SANDERS
Burlington
*HERSCHEL W. SCHENCK
Kansas City
*EVELYN SEARCY
Kansas City
†JOHN WHITMAN SEARS
Lawrence
RAY CHARLES SENATE
Paola
JANE BAKER SHARER
Garden City
*C. LAWRENCE SHERWOOD
Lawrence
HARRIETTE E. SHERWOOD
Kansas City, Mo.
ROBERT O. SHERWOOD
Cimarron
MARY ELIZABETH SHULER
Lawrence
WALT R. SIMMONS
Olathe
EDWARD ARCHIBALD SMILEY
Junction City
*EILEEN GEORGINA SMITH
Hutchinson
HAROLD LARWILL SMITH
Kansas City, Mo.

OWEN HEATON SMITH
Marion
ROBERT EDWARD SMITH
Kansas City
RICHARD DUNHAM SOWDER
Madison
VEDA MARGARET SPENCER
McPherson
FRANCES SARAH STARK
Kansas City, Mo.
*MARY MARGARET STARR
Hutchinson
WALT A. STEIGER
Topeka
LAWRENCE STERLING
Rochester, N. Y.
VIRGINIA LOUISE STERLING
St. Louis, Mo.
DOROTHY MARIE STEWART
Lawrence
GEORGE EDWARD STEWART
Kansas City, Mo.
WINIFRED LOUISE STILWELL
Kansas City
RAE EVELYN STOLAND
Lawrence
CHARLES OTIS STOUT
Kansas City
GRACE SULLIVAN
Trenton, Mo.
JANE GARY SURFACE
Salina
*MAJOR M. SWAN
Thayer
*ALVIN L. SWENSON
Independence, Mo.

FLORENCE IRENE TEUBNER
Pleasanton
SAMUEL T. THIERSTEIN
Whitewater
HENRY DEVLIN THOMAS
Leavenworth
BLANCHE LUCILE THOMPSON
Gove
*FRANCES LUCILE TINDAL
Osborne
CECELIA MAE TOWNE
Lawrence
PRENTICE AARON TOWNSEND
Lawrence
*J. ALDEN TROVILLO
Lawrence
*LOUISE TUBBS
Norton
DEAN WHITCOMB TUCKER
Kansas City, Mo.
HOWARD W. TURTLE
Salina

*FRANK VENTURA
Kansas City
*WENDELL GERALD VINCENT
Hutchinson
MARIE WACHTER
Kansas City, Mo.
LEOTA LORRAINE WAGNER
Ellinwood
WALTER SHERMAN WAGNER
Lawrence
*ANNE WALBRIDGE
Topeka
ROBERT FENCIL WALLACE
Holton
WAYNE ORRIN WALLACE
Kansas City
MARVIN JAY WANAMAKER
Barnes
*EVA KINGMAN WATSON
Leavenworth
CARL AUGUST WATTENBERG
Lawrence
JOHN D. WAY
Pittsburg

RICHARD GAYLARD WEAVER Concordia	MARY ETHEL WELKER Centerville	CAROL LOUISE WIDEN Kansas City	*RICHARD DAVIS WOLF Iola
NADINE WEBER Osawatomie	DORIS CARLENE WESTFALL Topeka	HELEN MARGARET WILSON Lawrence	PAUL DONALD WOODMANSEE Kansas City, Mo.
*HELEN JEANETTE WEDOW Kansas City, Mo.	*MARY VIRGINIA WHEELER Sterling	*LUCILLE DANTE WILSON Larned	WILDA BERYL WRIGHT Lawrence
LUCILE WEISS Barnes	MARY JANE WHITAKER Leavenworth	FREDERICK JACK WINDLE Columbus	CHARLES R. ZESKEY, Jr. Kansas City, Mo. 310

Bachelor of Science in Medicine

WINSTAN L. ANDERSON Tescott	KENNETH W. HAWORTH Wichita	††JOHN W. METCALFE Lawrence	*DARREL THOMAS SHAW Kansas City
††GREGG BARR ATHY Parsons	††HERBERT HAROLD HESSER Kansas City	*INGALL HOWARD NEAS Kansas City	LUIN KNOWLES THACHER Waterville
CAROLINE CHRISTLE BROWN Leavenworth	HENRY HAROLD HYNDMAN Wichita	††CHARLES GRATTON OAKES Kansas City, Mo.	††A. DENTON VAIL Croweburg
MAHLON HENRY DELP Lenora	††EDWARD H. KLEIN Lawrence	CHARLES NELSON OUTT Galena	LLOYD PAYTON WARREN, Jr. Wichita
*VERYL J. ELSON Almena	MARTIN P. KOKE Paola	PAUL THURLOW PETIT Chanute	MAX WELTON WELLS Asherville
††JOSEPH G. EVANS Kansas City	*MAURICE V. LAING Lawrence	HENRY FRANCIS QUINN Kansas City, Mo.	SLOAN JACOB WILSON Wichita
CHARLES S. FLECKENSTEIN Herdon	ARTHUR LEE LUDWICK, Jr. Overland Park	BRUCE BAILEY ROLF McPherson	††RALPH ZUPANEC Spearville 37-347
JAMES TURTON FOWLER Osawatomie	††GEORGE H. MARTS Lawrence	JOHN MARSHALL RUMSEY Kansas City, Mo.	
††LAWRENCE EASTER GEESLIN Arkansas City	MORRIS DONALD McFARLAND Kansas City, Mo.	††HERBERT R. SCHMIDT Canton	
ERNEST EDWARD HARVEY Salina	‡HAROLD BRUCE MELCHERT Ottawa	HERBERT HOYT SCHNEIDER Lawrence	* Assigned to class of 1933 †† Assigned to class of 1932 ‡ Assigned to class of 1928

SCHOOL OF ENGINEERING AND ARCHITECTURE

Presented by GEORGE C. SHAAD, *Dean*

Bachelor of Science in Architecture

JOSEPH ELDEN JOHNSON Lawrence	JAMES LAYTON TERRY Kansas City, Mo.	CLEMENS WILLIAM WOLF Lawrence 3
----------------------------------	--	------------------------------------

Bachelor of Science in Architectural Engineering

HUGH WILSON HIATT Kansas City, Mo.	NEAL O. REYBURN Lawrence	ROBERT WILLIAM REYNOLDS Hiawatha
RALEIGH HUNTER MACKLIN Ottawa		JAMES LAYTON TERRY Kansas City, Mo. 5

Bachelor of Science in Chemical Engineering

††NORMAN ELROY BAUGHN Kansas City	*JAMES SCHOLL COMBS, Jr. Lawrence	GODFREY B. GRABLE Faucett, Mo.	JOHN FRANKLIN REDMOND Salina
HAROLD R. BECK Dodge City	JAMES HOWELL COMPTON, III Wichita	HAROLD ISAAC HOOVER Lawrence	WILL SWERDLOFF Kansas City, Mo.
* Assigned to class of 1933 †† Assigned to class of 1931	WESLEY EDGAR GIFT Fayette, Mo.	*JAMES S. NAISMITH Lawrence	DAVID WHITE THORNE Roswell, N. M. 11

Bachelor of Science in Civil Engineering

PAUL A. BOREL Kansas City, Mo.	†ROBERT MASON HAIR Lawrence	*ELWOOD RICHARD LEESON Topeka	CHARLES EUGENE SPAHR Independence, Mo.
§ELMER R. CROSS, Jr. Kansas City, Mo.	GLENN ELBERT HANDS Kansas City, Mo.	°STANLEY BARROWS NELSON Kansas City, Mo.	MARK C. SYKES Kansas City, Mo.
THEODORE PAUL DWYER Kansas City, Mo.	*GEORGE HERBERT HAZEN, Jr. Kansas City	*HARRY H. POTEET Hillsdale	*TOM M. TAYLOR Lawrence
EDWIN ASHLEY ELLIOTT Kansas City, Mo.	URA JAMES HOLLIS Kansas City, Mo.	*FELICISIMO D. SOLIDARIOS Sta. Barbara, P. I.	WENDELL CHAMBERS WYATT Wellington 17
*MURRAY AUSTIN GETZ Kansas City, Mo.			

Bachelor of Science in Electrical Engineering

HAROLD E. AHLSTEDT Kansas City	KENNETH E. FINK Kansas City, Mo.	ZVONIMIR KVATERNIK Kansas City	DANA PRATT Topeka
ARNOLD T. ASHTON Ottawa	ORRIN CORY FRENCH Topeka	*FRED J. LINGEL New York, N.Y.	*HARVEY EUGENE RAYMOND Kansas City, Mo.
ARTHUR GRANT BANKS Lawrence	ROBERT EDWIN GANOUNG Salina	FRED CLARK LISCUM Lawrence	GILMER L. REYNOLDS Kansas City, Mo.
+GEORGE WALTER BOND Hartford	ROBERT LUTHER GLYN, Jr. Topeka	†ARTHUR KENNETH LOHOFF Lawrence	WAYNE M. SANDERSON Lawrence
JOHN A. BONDANK Kansas City	HARRY TAKASHI HAMAISHI Honolulu, Hawaii	HUGH O. MAKINSON Lawrence	CHARLES EDWARD SMITH Lawrence
JOHN EDWARD BONDURANT Lawrence	ALFRED J. HOOVER Tonganoxie	WILBUR LANNING MASHETER Sabetha	BENJAMIN F. WHEELER Lawrence
GEORGE C. COOPER, Jr. Kansas City	GEORGE E. HUBRIG Kansas City, Mo.	HOWARD A. OLIPHANT Topeka	ALFRED B. WHITE Arma
WILLIAM E. DICKINSON Lawrence	*ELTON KLINE KELLEY Kansas City, Mo.	ROBERT C. OLIVER, Jr. Kansas City, Mo.	LESTER HERMAN WOLGAST Ottawa
WILLIAM ALDEN EDSON Olathe	*LEWIS W. KITTRELL Arkansas City	RICHARD WILLIAM PORTER Salina	ROY J. YATES Tonganoxie 37
HAROLD FELLHAUER Kansas City, Mo.			

Bachelor of Science in Industrial Engineering

ARNOLD B. FRENCH Kansas City, Mo.	ELWOOD J. LEEP Kansas City	JOSEPH LETTS, Jr. St. Joseph, Mo.
VERNE RUSSEL HALL Lawrence		‡HERBERT BERRY PARKER Topeka 5

Bachelor of Science in Mechanical Engineering

EDWARD M. BRUZELIUS, Jr. Kansas City	STANLEY PAUL McCracken Lawrence	ALFRED J. RAPP Lawrence	DONALD A. STARK Topeka
FREEMAN H. EGOLF Wichita	JOHN B. NEWELL Topeka	NOBLE P. SHERWOOD, Jr. Lawrence	KENNETH M. STEVENS Hutchinson
GAYLORD BENSON HART Kansas City	*EDWARD WILLIAM PETERSON Kansas City, Mo.	GARNETT W. SHOOK Lawrence	JACK WEISBEIN Kansas City, Mo. 12

Bachelor of Science in Mining Engineering

CYRUS D. CANTRELL, Jr. Kansas City, Mo.	CLAYTON BAKER OTT Overland Park	*JOHN THOMAS REYNOLDS Lawrence
*THEODORE J. CRAIG Lawrence		CHARLES STEPHEN ROHRER Lawrence 5

Bachelor of Science, 5 year

*MURRAY AUSTIN GETZ Kansas City, Mo.	GLENN ELBERT HANDS Kansas City, Mo.	DAVID V. WHITNEY, III Kansas City, Mo. 3-98
---	--	--

* Assigned to class of 1933
† Assigned to class of 1932

‡ Assigned to class of 1931
§ Assigned to class of 1929

‡ Assigned to class of 1928
+ Assigned to class of 1923

° Assigned to class of 1917

SCHOOL OF FINE ARTS

Presented by DONALD M. SWARTHOUT, *Dean*

Bachelor of Music Education

MILDRED B. ALLEN Williamstown	MADGE MOUNT CRAIG Osawatomie	CATHERINE F. KANNAPPEL Newton	*VIRGINIA SHIVE Turon
ANNA C. ARMSTRONG Wellington	*LLEWELLYN SYDNEY DAVID Bonner Springs	HELEN LUCILLE KISSELL Portis	*MAURINE SHULER Kansas City, Mo.
NATHALYN NEWEL ASHE Topeka	MARGARET E. DORTLAND Gorham	MARY ELIZABETH LEWIS Yates Center	†VIRGINIA E. SIMMONS Lake City
MARY ELIZABETH BRADY Cherryvale	MARY LOU EARLENBAUGH Lawrence	GENE E. MCKEE Fairview	*ANNA MARJORIE SINNING Holton
*VERL DeCHRISTA BRATTON Lawrence	LUCILLE ELIZABETH FISHER Lawrence	*RUTH MAUDE MILLER St. Joseph, Mo.	LUCIENE THOMAS Fredonia
*JANET LOUISE COULSON Lawrence	OLETA WINONA FITZGERALD Kansas City, Mo.	REXFORD JACKSON SHAVER St. Joseph, Mo.	ALICE ISABEL TUKE Pittsburg
VIRGINIA ROSALIND CRAGUN Chicago, Ill.			*OPAL JAUNITA WALL Rock

26

Bachelor of Music

ADELENA JANA DRUSKUS (Violin) Neodesha	SISTER MARY VIDA HAYES (Voice) Leavenworth	HILMA DELIGHT POWELL (Piano) Ottawa
*MARY LOU EARLENBAUGH (Voice) Lawrence	LEONA MAE JENSEN (Piano) Nowata, Okla.	HELEN VIRGINIA RUSSELL (Piano) Great Bend
SHIRLEY ELLEN GIBSON (Voice) Kansas City, Mo.	SISTER ETTA LOUISE KNAUP (Violin) Concordia	SISTER ROSE MATTHEW SILLERS (Piano) Leavenworth
SARA RUTH GREGORY (Violin) Decatur, Ill.	VIRGINIA WILLIS LaCROIX (Voice) St. Joseph, Mo.	VIRGINIA MARIBELLE THIES (Piano) Kansas City
GENEVIEVE F. HARGISS (Cello) Lawrence	*DORIS REITA NOVEL (Piano) Kansas City	CHARLES ALEXANDER WILSON (Piano) Tarkio, Mo.

15

Bachelor of Fine Arts

LYLE MARSHALL BAILEY (Design) Oakley	*ALICE LOUISE GEIGER (Public School Art) Salina	MARY PERKINS (Design) Lawrence
EDITH A. BORDEN (Public School Art) Lawrence	MARTHA ANN PAULINE GILL (Design) Lawrence	*ELIZABETH RANNEY (Design) Arkansas City
MAURINE WARNER DOWNING (Design) Lawrence	FRANCES HAMLIN (Public School Art) Kansas City	MILDRED JULIA SAWIN (Design) Kansas City, Mo.
PAULINE E. DURRETT (Design) Lebanon	*ELIZABETH CAROL HIGGINS (Design) Kansas City, Mo.	*INEZ E. SIMMONS (Public School Art) Lawrence
WANDA MARGARET EDMONDS (Design) Lawrence	LUCILE M. McINTYRE (Public School Art) Jewell	ANNA KATHRINE STEVENS (Design) Independence
*JENNIE MAUD ELLSWORTH (Design) Lawrence		AGNES WAPATO (Design) Manson, Wash.

17

Three-year Certificate in Piano

HELEN VIRGINIA RUSSELL
Great Bend

1-59

* Assigned to class of 1933
† Assigned to class of 1931

SCHOOL OF PHARMACY

Presented by L. H. HAVENHILL, *Dean*

Bachelor of Science

ERNEST WILLIAM BYE
Emporia

DAN O. RATZLOFF
Newton

ENNIS D. SANDBERG
El Dorado

*EARLE GRIFFATH WALKER
Leavenworth 4

Pharmaceutical Chemist

SAM S. FREED
St. Joseph, Mo.

*MABEL JENSEN
Burns

I. HAMILTON PERKINS
Kansas City

||SIDNEY RAYMOND RUFENER
Strong City 4-8

SCHOOL OF EDUCATION

Presented by RAYMOND A. SCHWEGLER, *Dean*

Bachelor of Science in Education

FERN BAKER
Lebo

HELEN MAURINE BALLARD
Twin Falls, Idaho

DONALD BEATTY
Ft. Scott

PHIL L. BEATTY
Ellsworth

*DOLORETTA MABEL BURNS
Kansas City

GLENN V. CUNNINGHAM
Elkhart

*VERA NAOMI CURTIS
Kansas City

*GRACE ANNE DOOLEY
Kansas City, Mo.

LUCRETIA DOUGLAS
Lawrence

HINDA JEAN FOX
St. Joseph, Mo.

||D. JAMES GIOKARIS
Kansas City, Mo.

JESSA MAE GOLDEN
Kansas City

*MAUD E. HEWITT
Kansas City

LENA B. HILL
Highland

*WILLIAM E. HODGES
Andover

ELIZABETH de J. HOWE
Radford, Va.

*MARAGET LEE JACKSON
Lawrence

*THELMA LAURINE KIER
King City, Mo.

JEANNETTE AUSTIN KING
Arkansas City

*THELMA W. KRATOCHVIL
Lucas

JUNIUS O. LAWS
Oswego

CLARA FRANCES LEWIS
Trinidad, Colo.

MABEL LUCY LYNN
Kansas City, Mo.

*M. ROBERTA MILLER
Kansas City

BETTY BELLE MOORE
Kansas City, Mo.

JACK E. NAISMITH
Lawrence

BARBARA JANE NEUBECKER
Waterloo, Iowa

*MARIAN BURNS PAULETTE
Kansas City, Mo.

*LILLIAN LENORA PETERSON
Kansas City, Mo.

BETH RIDINGS
Caldwell

BELVA BETH ROESLER
Claflin

MARVIN HENRY ROSENE
Scandia

*JAE H. SATTERWHITE
Kansas City, Mo.

*INA MAY SHEPPARD
Kansas City

MARGARET E. SPEIR
Peabody

*EMMA VANOUS
Kansas City

MARGARET THAYER WALKER
Topeka

*MARY LONG WALKER
Kansas City, Mo.

DOROTHY M. WOOD
Kansas City, Mo.

FRANCES WOOLLEY
Kansas City

DOROTHY ZIMMERMAN
Kansas City 41

University Teacher's Diploma

LAUREL CHARLENE ALLEN
Kansas City, Mo.

THEKLA BERYL ANDERSON
St. Joseph, Mo.

WALLACE M. ANDERSON
Iola

HELEN A. M. ASTON
Lawrence

CATHARINE E. BAGLEY
Kansas City, Mo.

FERN BAKER
Lebo

FRANCES M. BALLARD
Attica

HELEN MAURINE BALLARD
Twin Falls, Idaho

NADYNE BARKER
La Harpe

DONALD BEATTY
Fort Scott

PHIL L. BEATTY
Ellsworth

*WILLIAM F. BLAIR
Lawrence

RUTH ELIZABETH BLAUL
Burlington, Iowa

ROBERTA VIRGINIA BLINN
Hutchinson

KATHALEEN L. BOUCHER
Minneola

WILLIAM B. BRACKE
Atchison

LYDIA ANNA BROCKER
Paola

MARTHA BROWNLEE
Hutchinson

*R. WILL BURNETT
Lawrence

*DOLORETTA MABEL BURNS
Kansas City

MARTHA ALLEN CAMERON
Lawrence

HELEN GENEVA CHRISTMAN
Topeka

LOUISE CLARKE
Lecompton

JAMES MONROE COX
Lawrence

GLENN V. CUNNINGHAM
Elkhart

*VERA NAOMI CURTIS
Kansas City

DOROTHY MAE DAVIS
Peabody

*MAXINE DEVLIN
Turon

GRACE MILDRED DeWEESE
Lawrence

*GRACE ANNE DOOLEY
Kansas City, Mo.

LUCRETIA DOUGLAS
Lawrence

*MARY LUCILLE DRAKE
Topeka

||MAURICE J. ERICKSON
Cleburne

ARTHUR RAYMOND FLICK
Stockton, Calif.

HINDA JEAN FOX
St. Joseph, Mo.

||D. JAMES GIOKARIS
Kansas City, Mo.

JESSA MAE GOLDEN
Kansas City

* Assigned to class of 1933

|| Assigned to class of 1932

|| Assigned to class of 1930

VIVIAN ELIZABETH GOULD Parsons	JEANNETTE AUSTIN KING Arkansas City	BARBARA JANE NEUBECKER Waterloo, Iowa	MARGARET E. SPEIR Peabody
B. GORDON GUSTAFSON Lawrence	*THELMA W. KRATOCHVIL Lucas	LOUELLA GRACE NEWELL Lawrence	FRANCES SARAH STARK Kansas City, Mo.
MARGARET HAGEN Ellinwood	*MARION LAKE Kansas City	ARIAN LUCRETIA NEWMAN Axtell	CHARLES OTIS STOUT Kansas City
*LUCILE E. HAMMONS Lawrence	ONA MAE LARNER Oskaloosa	GRETCHEN ANNE ORELUP Lawrence	FLORENCE IRENE TEUBNER Pleasanton
MARY LOUISE HARRISON Kansas City, Mo.	JUNIUS O. LAWS Oswego	*MARIAN BURNS PAULETTE Kansas City, Mo.	BLANCHE LUCILE THOMPSON Gove
*LA VERNE M. HASKELL Nortonville	LILA ALICE LAWSON Lawrence	SHELLEY FRANCIS PETERS Kansas City, Mo.	CECELIA MAE TOWNE Lawrence
*LUCILE A. HEKELNKAEMPER Atchison	CLARA FRANCES LEWIS Trinidad, Colo.	*LILLIAN LENORA PETERSON Kansas City, Mo.	*EMMA VANOUS Kansas City
*MAUD E. HEWITT Kansas City	WILLIAM CHARLES LEWIS Kansas City, Mo.	MIRIAM REAGOR Augusta	*WENDELL GERALD VINCENT Hutchinson
LENA B. HILL Highland	RALPH ARTHUR LUDWICK Glasco	LEWIDA CORINNE RICHARDS Manhattan	LEOTA LORRAINE WAGNER Ellinwood
LAURA ELIZABETH HINSHAW Lawrence	MABEL LUCY LYNN Kansas City, Mo.	BETH RIDINGS Caldwell	MARGARET THAYER WALKER Topeka
*WILLIAM E. HODGES Andover	KATHERINE H. MARION Pittsburgh, Pa.	*IRMA LOIS RIZLEY Lawrence	*MARY LONG WALKER Kansas City, Mo.
ELIZABETH de J. HOWE Radford, Va.	MINNIE NAOMI McDANIEL Muskogee, Okla.	DOROTHY MAE ROBERTS Lawrence	LUCILE WEISS Barnes
FRANCES CAROL HUNTER Lawrence	ARTHUR PORTER McKINSTRY Chanute	BELVA BETH ROESLER Clafin	MARY ETHEL WELKER Centerville
GERALDINE ELLEN IRION Junction City	FREDA MAE MERRICK Troy	*MARVIN HENRY ROSENE Scandia	MARY JANE WHITAKER Leavenworth
FRED WILSON JEANS Kansas City, Mo.	*M. ROBERTA MILLER Kansas City	*JAE H. SATTERWHITE Kansas City, Mo.	*LUCILLE WILSON Larned
ELIZABETH RUTH JONES Neodesha	BETTY BELLE MOORE Kansas City, Mo.	*INA MAY SHEPPARD Kansas City	DOROTHY M. WOOD Kansas City, Mo.
MINNIE MILDRED JONES Highland	MARY ELIZABETH MYERS St. Joseph, Mo.	MARY ELIZABETH SHULER Lawrence	FRANCES WOOLLEY Kansas City
*THELMA LAURINE KIER King City, Mo.	JACK E. NAISMITH Lawrence	*EILEEN GEORGINA SMITH Hutchinson	DOROTHY ZIMMERMAN Kansas City

* Assigned to class of 1933

THE RESERVE OFFICERS' TRAINING CORPS

Presented by MAJOR W. C. KOENIG, PMS&T

Commission as Second Lieutenant, Officers' Reserve Corps, U. S. A.

THOMAS FRANK ASHBY, Coast Artillery Reserve Leavenworth	LOUIS SMITH PARSONS, Coast Artillery Reserve Wamego
EUGENE ARRINGDALE BARTLETT, Coast Artillery Reserve Kansas City, Mo.	WILLIAM ELVIN PINE, Coast Artillery Reserve Lawrence
MAURILIO JOHN CUADRA, Engineer Reserve Princeton	*HERSCHEL WOOD SCHENCK, Coast Artillery Reserve Kansas City
GERALD FREDERICK FRANCE, Engineer Reserve Lawrence	RAY CHARLES SENATE, Coast Artillery Reserve Paola
VERNE RUSSEL HALL, Engineer Reserve Lawrence	HARRY LLOYD SHAFFER, Coast Artillery Reserve Waldo
KENNETH JOE HODSON, Coast Artillery Reserve Columbus	GARNETT WARD SHOOK, Engineer Reserve Lawrence
FRANK REYNOLDS HOLTZAPPLE, Engineer Reserve Lawrence	*HAROLD LARWILL SMITH, Coast Artillery Reserve Kansas City, Mo.
*ARTHUR EUGENE INMAN, Engineer Reserve Lawrence	KENNETH MERITT STEVENS, Coast Artillery Reserve Hutchinson
ELWOOD J. LEEP, Engineer Reserve Kansas City	MARVIN JAY WANAMAKER, Coast Artillery Reserve Barnes
PATRICK LAWRENCE McMANUS, Engineer Reserve Lawrence	BILLY RANDOLPH WARD, Coast Artillery Reserve Lawrence

20

Certificate of Eligibility to Receive Commission as Second Lieutenant, O. R. C.

CLARENCE WILLET ASLING, Coast Artillery Reserve Abilene	JAMES KOHLAND HITT, Coast Artillery Reserve White Cloud
JAMES HOWELL COMPTON, Jr., Engineer Reserve Wichita	JUSTICE ROBERT NEALE, Engineer Reserve Lawrence
GEORGE CARLTON COOPER, Jr., Engineer Reserve Kansas City	CHARLES EUGENE SPAHR, Engineer Reserve Independence, Mo.
JACK COHN EISBERG, Engineer Reserve Kansas City	ROBERT IRVING WILLIAMS, Engineer Reserve Kansas City, Mo.
JOHN MINOR HERNDON, Engineer Reserve Kansas City, Mo.	

9-29

* Appointment to be awarded after summer camp.

SCHOOL OF BUSINESS

Presented by FRANK T. STOCKTON, *Dean*

Bachelor of Science in Business

DALE QUENTIN BAKER Gardner	*CARL A. FOWLER La Harpe	ISAAC NORMAN MAGLEY Bird City	LOIS KINCAID RICHERT Newton
RAYMOND LAMONT BARKLEY Baldwin	ARCHIBALD J. GALLOWAY Kansas City, Mo.	CHARLES M. McCORMICK Bartlesville, Okla.	THEODORE RICKENBACHER Topeka
LESTER THOMAS BEISECKER Topeka	*EDWARD CLIFFORD GORDON Fort Scott	FRANK ALEXANDER McCOY Topeka	ALBERT HAROLD SCHMIDT Lawrence
CHARLES E. BLOMQUIST Kansas City	ROBERT DOUGLAS HARTLEY Baxter Springs	TOM MESCHKE Hutchinson	JACK T. SILVERWOOD Ellsworth
RAYBURN CHALMERS BOND Topeka	OLIVER W. HOLMES Eudora	MARJORIE G. NELSON Galveston, Texas	VERN V. STEWART Valley Falls
LEON M. BORNSTEIN Kansas City	WILLIAM GATES HOWARD Tulsa, Okla.	EARLE GRANVILLE NEWMAN Arkansas City	*LIMON E. STILES Kansas City
KATHALEEN LOUISE BOUCHER Minneola	M. LAKIN HUNTER Ft. Scott	EUGENE F. NISWONGER Winona	CHARLES C. THEIS Wichita
WILLIAM H. BUCKINGHAM Los Angeles, Calif.	HOMER CASPER JENNINGS Hutchinson	JANUS F. C. OLSEN, Jr. Seattle, Wash.	ZEANNA LUCILLE TOEWS Cullison
ROBERT FRANKLIN BURNETT Salina	MELL D. KENNEDY Sabetha	WOODROW WILSON PAINTER Afton, Okla.	HOWARD A. TURNER Gardner
H. JAMES CHRISTY Kansas City	CARL B. KINELL, Jr. Kansas City, Mo.	JULE H. PELOFSKY Kansas City	ALVIN E. WALTERS Lincoln
GEORGE TICKNOR CRAWFORD Lawrence	KALITA KATHO KIRKENDALL Kansas City, Mo.	*EDWARD W. PENCHARD, Jr. Lawrence	ARNOLD WILSON WOLFE Atchison
MARTHA LOUISE EVERITT Chanute	WILFORD C. KRAFT Paola	WILLIAM ELLIS RASH Thayer	LLOYD D. YENNER Lawrence
*KENNETH E. EWING Lawrence	*KARL R. LEIDIG Lenora	ROBERT S. RAYMOND, Jr. Kansas City, Mo.	KARL ZETTL Girard
MARIAN J. FITZWATER Goff			

53

SCHOOL OF LAW

Presented by ROBERT McNAIR DAVIS, *Dean*

Bachelor of Laws

*CHARLES HAL ALDERMAN Lawrence	HARRY CHARLES FEINGOLD, A.B. 1933 Lawrence	*WILLIAM HOADLY POWELL San Diego, Calif.
RICHARD ARTHUR BARBER, A.B. 1932 Lawrence	CLARK MILTON FLEMING Thrall	CHANDOS JUDSON PRUYN Columbus
*MILTON PORTIS BEACH Lawrence	FRANK ROBERSON GRAY Kirwin	FAYETTE EDWARD ROWE, B.S. 1925, Pittsburg State Teacher's College Scammon
SALVATORE BUCCERO Kansas City, Mo.	HAROLD H. HARDING, A.B. 1932 Kansas City	PAUL VINCENT SMITH, A.B. 1931, Baker University Paola
OLIVER QUINCY CLAFLIN, III Kansas City	EDWARD HAROLD IRWIN Liberal	WALLACE CODY SULLIVAN Logan
FRED L. CONNER Hutchinson	*ROBERT REYNOLDS JONES Clifton	LEONARD O. THOMAS Kansas City, Mo.
CURTIS MITCHELL COOK Lawrence	*WARREN WALLACE LATTIMER, A.B. 1930 Lawrence	CHARLES LEAMEN VANCURA Wilson
JACK COPELAND St. John	HARRY JACOB LEVINE Lynn, Mass.	JAMES WARREN WALLACE Prescott
*CHARLES WARREN DAY Shawnee	CHARLES H. MENGHINI Frontenac	JOSEPH E. VOGLER Waterville
EVERETT B. EVERHART, A.B. 1934 Lawrence	FREELAND FRANKLIN PENNEY, A.B. 1928, A.M. 1929, Ph.D., 1931, Cornell Lawrence	

29

* Assigned to class of 1933

Degrees are from the University
of Kansas unless otherwise noted.

SCHOOL OF MEDICINE

Presented by HARRY R. WAHL, *Dean*

Doctor of Medicine

- | | | |
|---|---|---|
| CLAIR MILTON ALDERSON
Erie | RALPH EVERETT HASKELL, A.B. 1932;
B.S. Med. 1932
Lawrence | FRANCIS OBERT
Esbon |
| WINSTAN L. ANDERSON, B.S. Med. 1934
Tescott | CHARLES FRANCIS HAUGHEY, B.S. Med.
1930; M.S. 1933
Paola | CHARLES NELSON OUTT, B.S. Med. 1934
Galena |
| HENRY HERRINGTON ASHER, A.B. 1930;
B.S. Med. 1932
Lawrence | EVERETT F. HAUKENBERRY, B.S. 1926,
Kansas State College
Manhattan | ELLIOTT F. PARKER, A.B. 1923, Park
College; B.S. 1927
Highland |
| GREGG BARR ATHY, A.B. 1930;
B.S. Med. 1934
Parsons | J. HESTER HAYNE, B.S. Med. 1933
Kansas City, Mo. | GLENN A. PEARSON, A.B. 1930
Kansas City, Mo. |
| JOHN FRANCIS BARKER, A.B. 1932
Kansas City | HERBERT HAROLD HESSER, B.S. Med. 1934
Kansas City | KARL HAMILTON PFUETZE, B.S. 1930,
Kansas State College; B.S.
Med. 1932
Manhattan |
| PRESTON EARL BEAUCHAMP, A.B. 1931;
B.S. Med. 1932
Kansas City | PETER E. HIEBERT, A.B. 1928, Tabor
College
Buhler | GLENN JAMES POTTER, A.B. 1927
Kansas City, Mo. |
| VICTOR B. BUHLER, A.B. 1930;
B.S. Med. 1932
Pretty Prairie | EDWIN R. HILL, Jr., A.B. 1931
Pleasanton | FRED E. ROGERS
Kansas City |
| RALPH MEARLE CAULK
Linwood | JAMES EDWARD HILL, A.B. 1930,
Friends University
Wichita | HERBERT REMPEL SCHMIDT, A.B. 1927,
Bethel College; B.S. Med. 1934
Canton |
| HOWARD LOWELL COHENOUR, A.B. 1930
Muskogee, Okla. | JAMES LENTZ HOPE, A.B. 1929,
University of Wichita
Wichita | †PAUL ELMER SMITH, A.B. 1928
Wichita |
| QUINTON DIETER CONKLIN, B.S. Med.
1932
Abilene | ALFRED J. HOREJSI, B.S. Med. 1932
Holyrood | ROBERT PHILIP SMITH, A.B. 1930;
B.S. Med. 1932
Junction City |
| KENNETH EVANS COX, B.S. Med. 1932
Kansas City, Mo. | CHARLES H. ISBELL, Jr., A.B. 1931;
B.S. Med. 1932
Kansas City | NATHANIEL B. SODERBERG, A.B. 1930
Kansas City, Mo. |
| MAHLON HENRY DELP, B.S. Med. 1934
Lenora | EDWARD H. KLEIN, A.B. 1930; B.S.
Med. 1934
Lawrence | FREDERIC AIKEN SPEER, A.B. 1931;
B.S. Med. 1932
Kansas City |
| THOMAS GAILLARD DUCKETT, A.B. 1932;
B.S. Med. 1932
Lamar, Mo. | LEWIS SCOTT KNISELY
Liberal | HAROLD FERDINAND SPENCER, B.S.
Med. 1932
Yates Center |
| HARRISON EILERS, A.B. 1928, University
of New Mexico
Albuquerque, N. M. | EVERT ALFRED LARSSON, B.S. Med. 1932
Kansas City | AARON ALFRED SPRONG, A.B. 1931
Oak Mills |
| MIRIAM DOROTHY EUBANK, A.B. 1930,
University of Missouri
Kansas City, Mo. | LIDA PAULINE LONGENECKER, A.B.
1931; B.S. Med. 1932
Kansas City | OTIS H. TRUE, A.B. 1931
Grantville |
| JOSEPH G. EVANS, B.S. Med. 1934
Kansas City | GEORGE H. MARTS, B.S. Med. 1934
Lawrence | A. DENTON VAIL, B.S. Med. 1934
Croweburg |
| CLARENCE LeROY FRANCISCO, A.B.
1931; B.S. Med. 1932
Kansas City | LENNERT BOYD MELLOTT, B.S. 1923,
Transylvania College
Kansas City | NELLIE DOROTHY GROSS WALKER,
B.S. Med. 1933
Lawrence |
| ROBERT CLARENCE FREDEEN, B.S. 1930,
Ottawa University; B.S. Med.
1932
Ottawa | JOHN W. METCALFE, A.B. 1931;
B.S. Med. 1934
Lawrence | ETHEL WATSON, B.S. Med. 1932
Independence, Mo. |
| LAWRENCE EASTER GEESLIN, A.B. 1931,
B.S. Med. 1934
Arkansas City | ERNEST MONROE MOORE, Jr. A.B. 1931;
B.S. Med. 1932
Kansas City, Mo. | BYRON EDWARD WILLIAMS, B.S.
Med. 1931
Lawrence |
| EMERY T. GERTSON, A.B. 1930, Kansas
Wesleyan University;
Randall | ERNEST C. MOSER, B.S. Med. 1932
Powhattan | CHARLES LEONARD WOODHOUSE
Kansas City, Mo. |
| GLENN O. GIFFIN, A.B. 1925
Kansas City | SAMUEL BARTON MULLER, B.S. Med. 1932
Kansas City | CHESTER LEE YOUNG, B.S. Med. 1932
Kansas City |
| BILLENS C. GRADINGER
Pittsburg | NEWELL NAY, A.B. 1929, Washburn
College
Topeka | RALPH ZUPANEC, B.S. Med. 1934
Spearville |
| HOWARD E. HAMILTON, B.S. Med. 1932
Kansas City | CHARLES GRATTON OAKES, A.B. 1934;
B.S. Med. 1934
Kansas City, Mo. | |

68

Degrees are from the University of
Kansas unless otherwise stated.

Certificate of Internship

- | | | |
|---|--|---|
| CLARENCE WILBUR ERICKSON, M.D. 1933
Kansas City | ALFRED HORTON HINSHAW, B.S. Med.
1931; M.D. 1933
Harveyville | PHILLIP D. KERNAN, B.S. Med. 1931,
University of Wisconsin; M.D.
1933, University of Wisconsin
Madison, Wis. |
| EVERETT J. GARRISON, A.B. 1918, Univer-
sity of Nebraska; M. D. 1933,
University of Nebraska
Omaha, Neb. | MARSHALL EARL HYDE, A.B. 1930; B.S.
Med. 1931; M.D. 1933
Augusta | JOHN F. SIMON, B.S. Med. 1931; M.D. 1933
Welda |
| MORRIS SHERMAN HARLESS, B.S. Med.
1931; M.D. 1933
Kansas City | | LESLIE BENJAMIN SMITH, A.B. 1927;
A.M. 1930; M.D. 1933
Neodesha |

8

† Assigned to class of 1931

Certificate of Nursing

HELYN LUCILLE BAIRD Centralia GRETA BANTLY Montrose, Mo. JOSEPHINE ANN CRIDER Kansas City, Mo. FRANCES EVELYN DAWSON Denver, Mo. EMMA OPAL DILLON Walnut LAVERNE ANN DOLECEK Holyrood EVA GERTRUDE FOSTER El Dorado	HAZEL ERMEN FULTON Winchester MARY MARTHA GEDDES Wellington MAE LUCILLE GEIST Junction City HAZEL MARIE GRIMES Lawrence MURIEL LOUISE HAYWARD Kansas City, Mo. BLANCHE MAE HYLTON Windom	ESTHER LOUISE JAMESON Tulsa, Okla. VIRGINIA GRIGGS KING Zarah RUTH KLEINSTEIBER Wellington BERNICE LAWS Lebo LETHA ELFREIDA MEYERS Olathe FRANKIE GROMER NEWMAN Pattonburg, Mo.	RUBY T. OLESON Belle Plaine HELENA LILLIAN RIORDAN Pittsburg MAYBELL IRENE RYAN Lebanon LUELLA SHAW Lawrence KATHERINE HELEN SHOTTS Buffalo *DOROTHY SWANSON Waterville
--	---	--	--

25-101

* Assigned to class of 1933

THE GRADUATE SCHOOL

Presented by ELLIS B. STOFFER, *Dean*

Master of Arts

ROMAN S. B. ABALOS, A.B. 1933, University of Kansas Thesis: The genus <i>Ophiola</i> (Homoptera, Cicadellidae).	Entomology	Lawrence
LUCY THORNTON BAILEY, A.B. 1932, Pomona College Thesis: The California background in the poetry of Robinson Jeffers.	English	Ontario, Calif.
GERTRUDE BELL, A.B. 1930, University of Kansas Thesis: "Aben Humeya o La Rebellion de los Mariscos" by d. Francisco Martinez de la Rosa.	Spanish	Kansas City, Mo.
RUTH BREIDENTHAL, A.B. 1931, University of Kansas Thesis: "Triboulet"; French, Italian, and English versions.	French	Kansas City
JOHN DUDLEY BOWLES, A.B. 1927, Fisk University Thesis: A comparative analysis of 100 Negro offenders and 100 white offenders brought before the court of Harris County, State of Texas.	Sociology	Houston, Texas
WILLIAM FAYETTE BROWN, A.B. 1914, University of Kansas Thesis: The genus <i>Chlorotettix</i> in America north of Mexico (Homoptera, Cicadellidae).	Entomology	Bethel
ROY WILSON BROWNING, A.B. 1926, University of Kansas Thesis: A study of the annual reports of school district clerks in fifty-one selected third class cities in Kansas during the year 1928.	Education	Manhattan
IRA BABINGTON BRYANT, Jr., A.B. 1928, Fisk University Thesis: A comparative study of news items about Negroes in white urban and rural newspapers of Texas.	Sociology	Houston, Texas
DOROTHY BUNCH, B.S. Educ. 1928, State Teachers College, Pittsburg Thesis: The later poems of William Butler Yeats.	English	Winfield
WILLIAM HARRINGTON CRAWFORD, A.B. 1929, Southwestern College Thesis: Paddock and agricultural legislation.	History	Winfield
G. HALDANE CROOKS, A.B. 1927, University of Kansas Thesis: A study of two methods of teaching English grammar and composition in high school.	Education	El Dorado
CHESTER B. CUNNINGHAM, A.B. 1932, William Jewell College; B.S. Educ. 1933, Central Missouri State Teachers College, Warrensburg Thesis: The construction and operation of a Geiger-Mueller tube counter.	Physics	Lawrence
CECIL C. CUSTER, A.B. 1922, University of Kansas Thesis: A comparison study of the scholastic achievements of athletic participants and non-participants in Bartlesville, Oklahoma, High School.	Education	Bartlesville, Okla.
SISTER M. LORIAN DEGAN, A.B. 1928, University of Kansas Thesis: A survey of the merit system in the American states.	Political Science	Leavenworth
VIDA ELLEN DUNBAR, A.B. 1929, Park College Thesis: A study of the graph $y = x + x^2 + x^3 + \dots + x^n$	Mathematics	Independence
EVERETT WARD EMERY, A.B. 1933, Baker University Thesis: Algebraic invariants from canonical forms.	Mathematics	Baldwin

NORA ETTA EVANS, B.S. Educ. 1923, State Teachers College, Pittsburg Thesis: Certain related triangles.	Mathematics	Lawrence
VERDA E. FILKIN, A.B. 1928, University of Kansas Thesis: Homemaking activities of high school girls.	Home Economics	Olathe
MARGARET M. FRITZEL, A.B. 1929, University of Kansas Thesis: The constitutional movement in Prussia, 1803-1823.	History	Lawrence
BEN WILLIS FUSON, A.B. 1932, College of Emporia Thesis: An experimental study of recent trends in the modern American short story.	English	Emporia
ALVA ALLAN GEORGE, A.B. 1933, University of Kansas Thesis: Dudley C. Haskell and his times.	History	Lawrence
CHARLES RUSSELL GILBERT, A.B. 1932, University of Kansas Thesis: The earthworms of Kansas and their parasites	Zoology	Leavenworth
RUTH JANE GRANDON, A.B. 1911, Washburn College Thesis: The clerics in Browning's poetry.	English	Topeka
WILLIAM ERNEST GRIFFIN, A.B. 1927, University of Kansas Thesis: A study of extraversion-introversion among Negro adolescents.	Education	Kansas City, Mo.
MARGARET HABEIN, A.B. 1931, Carleton College Thesis: Leslie Stevens as a critic of the eighteenth century.	English	Waseca, Minn.
HELEN MARY HAMILTON, A.B. 1932, Southwestern College Thesis: The Earl of Essex in La Calprenede, Thomas Corneille, and Henry Jones.	French	Winfield
WILLIAM F. HARMS, A.B. 1929, Bethel College Thesis: The life history of <i>Arytaina Amorphae</i> . (Homoptera, Chermidae).	Entomology	Lawrence
ELIZABETH ELMINA HAYSLIP, A.B. 1921, University of Kansas Thesis: Spanish place-names of New Mexico.	English	Roswell, N. M.
CLAUDE WILLIAM HIBBARD, A.B. 1933, University of Kansas Thesis: Two new genera of Felidae from the middle Pliocene of Kansas	Zoology	Toronto
LETCHEN AUGUSTUS HILL, B.S. 1925, Howard University Thesis: The embryology of the free caudal vertebrae in the chick.	Zoology	Kansas City
LIDA FORRESTER HOLMES, A.B. 1933, University of Kansas Thesis: Complement-fixation in experimental smallpox vaccination.	Bacteriology	Lawrence
LEE H. HORSLEY, B.S. 1933, University of Kansas Thesis: A physico-chemical study of the system thallos formate-water.	Chemistry	Lawrence
ETHEL ERNESTINE HUTCHENS, B.S. Educ. 1931, State Teachers College, Pittsburg Thesis: Influence of Lesage's "Le Diable Boiteaux" on a French and an English play.	French	Hallowell
JAMES D. INGLE, B.S. 1932, Ottawa University Thesis: Comparison of the glass and quinhydrone electrodes.	Chemistry	Overland Park
PAUL V. IMES, A.B. 1927, Missouri Wesleyan College Thesis: Flacculation of albumin by electrolytes.	Chemistry	Beloit
DOROTHY MARGARET JOHNSON, A.B. 1932, University of Kansas Thesis: Concerning the Gauss differential equation and hypergeometric functions.	Mathematics	Kansas City, Mo.
HELEN METTA JOHNSON, B.S. Educ. 1927, State Teachers College, Emporia Thesis: Mrs. Gaskell as a social critic.	English	Winfield
ELEANOR MABLE JONES, A.B. 1933, University of Kansas Thesis: "Le Tapin" by Paul Bourget.	French	Kansas City, Mo.
CLINTON A. KAUFMAN, A.B. 1929, Bethel College Thesis: The emissive power of liquid metals.	Physics	Moundridge
LOUIS OLNEY KENT, A.B. 1931, University of Kansas Thesis: An estimate of some contemporary literature on the crisis in democracy.	Political Science	Lawrence
BARBARA KESTER, A.B. 1932, University of Kansas Thesis: The medieval chronicle.	History	Lawrence
RUTH JOSEPHINE LENNEN, A.B. 1923, University of Kansas Thesis: An experiment in the use of subjective and objective tests.	Education	Lyons
GEORGE MICHAL LIKENESS, A.B. 1925, Hanover College Thesis: A study of the curriculum and the extra-curricular offerings of twelve high schools in southeastern Idaho 1932-1933.	Education	Soda Springs, Idaho
MARJORIE MURPHY MALONE, A.B. 1932, University of Wichita Thesis: Literary polemics upon naturalism in Spain.	Spanish	Wichita
ZELINDA FLORENCE MARCELL, A.B. 1925, University of Oklahoma Thesis: A dictionary of characters in the novels of Mary Webb.	English	Highland
SISTER MARTHE MASSOL, Brevet de Capacité, 1915, University of Paris Thesis: Lamartine et la Bible.	French	Kansas City, Mo.
GEORGE O. McCALEP, A.B. 1929, University of Kansas Thesis: A legislative history of the Federal Farm Loan Act, July 17, 1916.	History	Lawrence
JAMES WILLIAMSON McGRATH, A.B. 1933, Fort Hays State College Thesis: The dielectric constant and electric moment of toluene vapor.	Physics	Hays
SISTER ROSE TERESA McHALE, A.B. 1929, University of Kansas Thesis: Systems of curves with variable eccentricity. Polar co-ordinates.	Mathematics	Leavenworth

LESTER W. McMANIS, A.B. 1932, University of Kansas Thesis: A genetic and racial study of the emergence of tactual apparent movement.	Psychology	Kansas City
JOSEPH McMILLAN, A.B. 1928, Bishop College Thesis: The relation of parents' educational level to their children's achievement and intelligence.	Education	Marshall, Texas
JAMES S. MILLIGAN, A.B. 1926, Geneva College Thesis: The fiscal aspects of county consolidation.	Economics	Boyle
FRED S. MONTGOMERY, A.B. 1925, University of Kansas Thesis: A study of the provisions of teachers' contracts in cities of the second class in Kansas	Education	Paola
CLAY MAHURIN MORROW, A.B. 1929, Washburn College Thesis: A study of the reading choices of the fifth and sixth grades of the Topeka schools.	Education	Topeka
ELMAN A. MORROW, A.B. 1932, William Jewell College Thesis: A quantitative study of six leading secondary school physics texts.	Education	Lawrence
JEAN TIMKEN MURDUCK, A.B. 1933, University of Kansas Thesis: Libro de los enganos e los asayamientos de las muqeres: text and glossary.	Spanish	Kansas City, Mo.
ERNEST S. NEWCOMBE, A.B. 1925, University of Kansas Thesis: A comparison of the students pursuing academic and industrial courses in Wichita High School North.	Education	Wichita
IRENE EUGENIA NOLL, A.B. 1925, University of Kansas Thesis: The types of poor whites in the stories of Joel Chandler Harris.	English	Topeka
WENDELL CLARENCE NYSTROM, A.B. 1914, Bethany College Thesis: The Kansas community high school in terms of five criteria.	Education	Norton
DONALD JENNINGS OBEE, A.B. 1932, University of Kansas Thesis: A study of the preferences of some organic and inorganic sources of nitrogen by <i>Absidia glauca</i> , <i>Mucor spinosus</i> , <i>Gibberella saubinetii</i> and <i>Sclerotinia americana</i> and other fungi.	Botany	Kansas City
JOE W. OSTENBERG, A.B. 1924, Bethany College Thesis: A comparative study of the educational opportunities of the rural elementary schools of Ford County, Kansas.	Education	Ford
JOSEPH M. PATTERSON, A.B. 1931, University of Oklahoma Thesis: The Douglas group of the Pennsylvanian system in Douglas and Leavenworth counties, Kansas.	Geology	Lawrence
LAWRENCE DALE PIGG, A.B. 1928, William Jewell College Thesis: "Febrerillo el Loco," comedia en dos actos de Serafin y Joaquin Alvarez Quintero.	Spanish	Independence, Mo.
JANICE R. POOLE, A.B. 1931, University of Kansas Thesis: A study of a selected group of novels treating the World War.	English	Parsons
CECELIA MARGARET ROBINSON, A.B. 1921, University of Kansas Thesis: "Leoncia" de Dona Gertrudis Gomez de Avellaneda.	Spanish	Lawrence
WILLIAM ROBERT ROLINGSON, Jr., A.B. 1929, Southwestern College Thesis: The campaign for a larger navy. 1880-1898.	History	Winfield
FAYETTE EDWARD ROWE, B.S. Educ. 1925, State Teachers College, Pittsburg Thesis: American-Canadian relations, 1918-1933.	Political Science	Scammon
HELEN HART RUMBLE, B.S. Educ. 1930, A.B. 1932, University of Kansas Thesis: Who is the hero of "Paradise Lost"?	English	Lawrence
NED MILLER RUSSELL, A.B. 1932, University of Kansas Thesis: A preliminary study on the psychology of arithmetic.	Psychology	Lawrence
VANSTON HILARY RYAN, A.B. 1926, University of Kansas Thesis: Synthesis of 4-(4'-hydroxy phenoxy) benzoic acid and (3'-5'-iodo)-(4-(4'-hydroxy phenoxy) benzoic acid.	Chemistry	Atchison
SALLY W. SALATHIEL, A.B. 1933, University of Kansas Thesis: Louis XI in history and in literature.	French	Independence
WILLIAM SCALAPINO, A.B. 1916, University of Kansas Thesis: Analysis of sixth grade spelling errors in the first one hundred words of Ayres' Spelling List.	Education	Santa Barbara, Calif.
GEORGE C. SCHROEDEL, A.B. 1927, Southwestern College Thesis: The position of the Latin attributive adjective in Cicero's "De Officiis" with special reference to emphasis.	Latin	Winfield
SISTER MARIE LODOIS DE SION, Brevet de Capacite, 1907, University of Paris Thesis: Evolution au theatre du type du bourgeois enrichi, de Moliere a nos jours.	French	Kansas City, Mo.
GEORGE D. SMALL, B.S. Educ. 1927, State Teachers College, Pittsburg Thesis: The problems that Negroes of Kansas, Missouri, and Oklahoma face in getting higher education.	Sociology	Pittsburg
HOBART MUIR SMITH, B.S. 1932, Kansas State College Thesis: The amphibians of Kansas.	Zoology	Manhattan

SISTER STANISLAUS MARIE SMITH, A.B. 1932, Saint Mary College Thesis: Part I. Some derivatives of p-tertiary amyl phenol. Part II. Study on the Reimer-Tiemann reaction.	Chemistry	Leavenworth	
WILLARD LOUIS SMITH, A.B. 1931, DePauw University Thesis: A new method for determining the monochromatic emissivity of incandescent solids, in particular, platinum.	Physics	Indianapolis, Ind.	
MABEL C. STORMFELS, A.B. 1921, College of Emporia Thesis: Land policy in Congress, 1867-69.	History	Emporia	
RALPH H. STUTZMAN, A.B. 1930, Southwestern College Thesis: The religious development of Hermann Stehr, as seen in his novels.	German	Harper	
CHARLES DWIGHT TOLLE, A.B. 1929, John Fletcher College Thesis: A comparative study of the high schools of Madison County, Montana.	Education	Harrison, Mont.	
PAUL V. TROVILLO, B.S. Educ. 1931, University of Kansas Thesis: Objective criteria of character types. A preliminary study.	Psychology	Lawrence	
VERA ELIZABETH ULLRICH, A.B. 1933, University of Kansas Thesis: A study of the critical controversy over Walt Whitman's literary defects.	English	Lawrence	
WALTER A. VARVEL, A.B. 1932, University of Kansas Thesis: A study of memory for completed and interrupted tasks under varying degrees of motivation.	Psychology	Fort Scott	
SOPHIA WABISZEWSKI, A.B. 1932, St. Mary-of-the-Woods College Thesis: "El Tanto por Ciento" by Adelardo Lopez de Ayala.	Spanish	Milwaukee, Wis.	
ORRY CARWIN WALZ, A.B. 1931, University of Kansas Thesis: Some comments on Hans Vaihinger's fictionalism.	Philosophy	Dorrance	
NEAL M. WHERRY, A.B. 1917, Sterling College Thesis: The status of the secondary school principal of Kansas (1932-1933).	Education	Lawrence	
H. MILLARD WHITE, A.B. 1927, Sterling College Thesis: A study based on biographies of leaders in education.	Education	Sterling	
JOHN LEOD WILSON, B.S. 1923, Kansas State Agricultural College Thesis: On some derivatives of 3-4, and 2-5-di-chloranilines.	Chemistry	Ottawa	
JUDSON E. WOODS, A.B. 1926, Ottawa University Thesis: Worthy Home Membership.	Education	Ottawa	
EVELYN WORDEN, A.B. 1933, University of Kansas Thesis: Spanish priests and literary historians.	Spanish	La Crosse	
DOROTHY GRAUERHOLZ WRIGHT, A.B. 1927, University of Kansas Thesis: Educational influences on the use of leisure time.	Sociology	Atchison	
ALVIN RAY YORDY, A.B. 1927, Bethany College Thesis: The development of compulsory education in the state of Kansas.	Education	Larned	93

Master of Science

WARREN BENEFIELD BOAST, B.S.E.E. 1933, University of Kansas Thesis: Alternating-current network analyzer.	Electrical Engineering	Topeka	
FRANKLIN OMO DOUGHTY, B.S.E.E. 1933, University of Kansas Thesis: Alternating-current network analyzer.	Electrical Engineering	St. Joseph, Mo.	
HENRY PHILLIP GOODE, B.S. IND. ENG. 1930, University of Kansas Thesis: Industrial development in Kansas.	Industrial Engineering	Lawrence	
RUSSELL WAITE KERR, A.B. 1927, College of Emporia, B.S. MED. 1931, M.D. 1931, University of Kansas Thesis: The histopathology of coronary disease.	Pathology	Council Grove	
EDWIN HARPER LANE, B.S.E.E. 1928, University of Kansas Thesis: Variation of the surface conductance of Pyrex glass with the vapor pressure of water and alcohol.	Physics	Lawrence	
MERVIN J. RUMOLD, A.B. 1928, B.S. Med. 1929, M.D. 1930, University of Kansas Thesis: Pulmonary embolism associated with venoclysis.	Surgery	Kansas City	6

Master of Music

GAVIN LLOYD DOUGHTY, B.M. 1932, University of Kansas Thesis: String Quartette in D minor.		St. Joseph, Mo.	
EVERETT FETTER, B.M. 1932, Ottawa University Thesis: Quartet in A flat major for two violins, viola and violincello.		Ottawa	
WILLIAM HOWIE, A.B. 1931, B.M. 1932, University of Kansas Thesis: Fantasia and fugue in E minor.		Lawrence	3

Master of Science in Education

KATHERINE EVA BALL, B.S. Educ. 1918, State Teachers College, Pittsburg Thesis: An investigation of the reading abilities of rural school teachers in Kansas.	Independence
RUDOLPH J. BARTA, B.S. Educ. 1928, State Teachers College, Hays Thesis: Status of the public-school superintendent in Kansas, 1932-1933.	Levant
HOWARD VERNON BIXBY, B.S. Educ. 1928, State Teachers College, Emporia Thesis: A survey of how Kansas schools inform their public.	Bern
ALETA M. BOCK, B.Educ. 1930, University of California Thesis: Personality characteristics of a group of high school students.	Los Angeles, Calif.
CLELA GILHAMS GLEASON, B.S. Educ. 1930, University of Kansas Thesis: Individual case studies of an opportunity room.	Wichita
CHILES EDWARD HOFFMAN, B.S. Educ. 1921, Central Missouri State Teachers College, Warrensburg Thesis: A survey of woodwork in junior and senior high schools in second class cities of Kansas. 1926-27.	Pawhuska, Okla.
ROY ALVIN HOGLUND, B.S. Educ. 1925, State Teachers College, Emporia Thesis: Some phases of Kansas school law as determined by supreme court decisions.	Bonner Springs
ZILLA MAURINE LOVELY, B.S. Educ. 1931, University of Kansas Thesis: Contemporary juvenile periodicals.	Kansas City
GEORGE LYNDES MacCURDY, C.E. 1914, Rensselaer Polytechnic Institute Thesis: A study of the teaching of general science in the high schools of Kansas. 1930-1931.	Kansas City, Mo.
IRA E. McCONNELL, B.S. Educ. 1923, State Teachers College, Pittsburg Thesis: Bonded indebtedness of sixty-nine rural high schools in sixteen contiguous Kansas counties 1915-1931.	Richmond
LODA IRENE NEWCOMB, B.M. and B.M.E. 1933, University of Kansas Thesis: An analysis of music offerings in certain high schools of Kansas.	Lawrence
CHARLES HAROLD ORR, B.S. Educ. 1927, Central Missouri State Teachers College, Warrensburg Thesis: Certain differences in the responses of normal and subnormal adolescent children to picture puzzles.	Moberly, Mo.
GLADYS ARLENE PETERS, B.S. Educ. 1933, Fort Hays State College Thesis: A study of certain interests and their relation to vocabularies in Indian high school students.	Cuba
BRYCE POE, B.S. Educ. 1926, Central Missouri State Teachers College, Warrensburg Thesis: Factors relating to industrial success of trade school graduates.	Kansas City, Mo.
HELEN M. REARDON, B.S. Educ. 1928, State Teachers College, Emporia Thesis: A comparative study of trends in the teaching of journalism in three cities of northeastern Kansas.	Leavenworth
HOWARD HARDY ROBINSON, B.S. Educ. 1927, State Teachers College, Pittsburg Thesis: A study of some personality traits of high school pupils.	Augusta
SARAH DORCAS SCOTT, B.S. Educ. 1932, Kansas City Teachers College Thesis: A study of the relationships between week-day church school attendance and religious standards.	Kansas City, Mo.
HALLIE BETH THACKABERRY, B.S. Educ. 1920, University of Missouri Thesis: The relative efficiency of two methods of instruction in plane geometry.	Kansas City, Mo. 18

Master of Education

GAYLE THEODORE CHUBB, A.B. 1925, Baker University	Baldwin
GUY PAYNE CROSS, B.S. Educ. 1924, State Teachers College, Emporia	Reading
LANCE C. DUFF, B.S. Educ. 1927, State Teachers College, Springfield, Missouri	El Dorado Springs, Mo.
ANACLETO VILORIA GOROSPE, Ph.B. 1928, De Paul University	Philippine Islands
RUTH SAMARIA HOBBS, A.B. 1925, University of Kansas	Concordia
RAYMOND L. MARKLEY, A.B. 1914, College of Emporia	Thermopolis, Wyo.
JAMES CLARENCE MICHAELS, B.S. Educ. 1925, State Teachers College, Pittsburg	Winfield
WILLIAM CLAY MORROW, A.B. 1916, University of Kansas	Lawrence
WILEY POLESON, B.S. Educ. 1929, State Teachers College, Maryville, Missouri	Wamego 9

Master of Business Administration

R. MURRAY HAVENS, A.B. 1927, Baker University Thesis: History of financing of public highways in Arkansas.	Mound City 1
---	--------------

Civil Engineer

GEORGE WATSON BRADSHAW, B.S.C.E. 1921, University of Kansas Thesis: Recent methods of rigid frame analysis.	Lawrence 1
--	------------

Industrial Engineer

PAUL AUGUSTUS JOHNSON, B.S. Ind. Eng. 1928, University of Kansas
Thesis: Industrial engineering in an oil refinery.

Augusta

1

Doctor of Philosophy

JOHN GARY BLOCKER, B.S. 1925, University of Illinois; M.B.A. 1927, University of Kansas Thesis: Budgetary control in relation to cost accounting.	Economics	Lawrence
ROBERT L. BRIGDEN, A.B. 1930, College of Emporia; A.M. 1931, University of Kansas Thesis: The dynamics of spiral movement in man.	Psychology	Chanute
WILLIAM HENRY COURTIER, B.S. 1926, Denison University; M.S. 1928, Colorado School of Mines Thesis: Physiography and geology of south central Kansas.	Geology	Kinsley
HOWARD OWEN DEAY, A.B. 1926, A.M. 1927, University of Kansas Thesis: The genus <i>Tenagobia</i> Bergroth (Corixidae, Hemiptera).	Entomology	Lafayette, Ind.
VERNON SCOTT GENTRY, A.B. 1929, Georgetown College; A.M. 1931, University of Kentucky Thesis: The cytoplasmic components of the male germ cells of the Acrididae with special reference to the Golgi-bodies and terminal vesicle.	Zoology	Wheatley, Ky.
ERNEST GRISWOLD, A.B. 1927, University of Kansas Thesis: Some studies of amphoteric acetates in acetic acid.	Chemistry	Vermillion, S. D.
BARTLETT LEONARD HESS, A.B. 1931, Park College, A.M. 1932, University of Kansas Thesis: Religion and popularism at the opening of the nineteenth century. Popularism vs. reaction.	History	Effingham
C. G. HARRY JOHNSON, A.B. 1920, Bethany College; A.M. 1925, University of Kansas Thesis: Glacial acetic acid as a colloid dispersion medium.	Chemistry	Ft. Collins, Colo.
ALONZO MITCHELL LANDS, B.S. Educ. 1926, West Tennessee State Teachers College, Memphis; A.M. 1930, University of Kansas Thesis: A study of calcium metabolism with some observations of the effects of the administration of large amounts of irradiated ergosterol.	Physiology	Lawrence
FRANCIS THEODORE PERKINS, A.B. 1930, A.M. 1931, University of Kansas Thesis: A genetic study of brain differentiation by the action current method.	Psychology	Lawrence
JAMES CARL RICE, B.S. Educ. 1922, A.M. 1927, University of Missouri Thesis: Pharmacodynamic reactions of respiratory depressants and analeptics after their injection into the great cistern of the dog.	Physiology and Pharmacology	Kansas City, Mo.
RANDALL ROYCE, A.B. 1930, Southwestern College; A.M. 1932, University of Kansas Thesis: A study of the electrodeposition of chromium, gold and platinum from solutions of their complex compounds.	Chemistry	Winfield
FREDERICK CHARLES SAUER, A.B. 1926, Stanford University; A.M. 1931, University of Kansas Thesis: Mitosis in the neural tube.	Anatomy	Lawrence
HERBERT SHUEY, A.B. 1925, A.M. 1932, University of Kansas Thesis: A typological approach to the study of human behavior.	Psychology	Lawrence
LIZA AGNES SPANN, A.B. 1925, Union University; A.M. 1929, Peabody College Thesis: Studies on the reproductive systems of <i>Gryllus Assimilis</i> fabr.	Zoology	Murray, Ky.
JESSE EDWIN STARECK, B.S. Chem. Eng. 1928, A.M. 1932, University of Kansas Thesis: The use of the Haring cell in the investigation of electrode reactions.	Chemistry	Benton
HARLEY GLENN UNDERWOOD, A.B. 1929, College of Emporia; A.M. 1931, University of Kansas Thesis: Part I. Other dithiobiurets and dithiobiuret derivatives. Part II. Synthesis of dithiazane rings.	Chemistry	Emporia
ORVILLE SELKIRK WALTERS, A.B. 1927, A.M. 1932, University of Kansas Thesis: The normal value and physiological variations of erythrocytes and hemoglobin in man.	Physiology	Lawrence
ALVIN Y. WELLS, B.S. Educ. 1924, State Teachers College, Pittsburg; A.M. 1930, University of Kansas Thesis: The bacteriophage.	Bacteriology	Cedar Vale

19-151-1025



The list contains 1025 degrees and certificates to 887 persons from 270 cities in 86 counties of Kansas; from 65 cities in 22 other states, and from 4 cities of 3 foreign countries.



ANNOUNCEMENT OF HONORS FOR 1934

Fellowships at the University of Kansas

Appointments to University of Kansas Fellowships in the Graduate School were made as follows for 1933-34:

- RAYMOND E. REINHART, A.B. 1927, Phillips University; M.S. 1929, University of Washington; Ph.D. 1933, University of Kansas, Research Fellowship in *Physics*.
JESSE E. STARECK, B.S., Chem. Eng., 1928; M.A. 1932, University of Kansas, the *Dr. Roy Cross Research Fellowship in Chemistry*, first awarded in 1933.
HARLEY GLENN UNDERWOOD, A.B. 1929, College of Emporia; M.A. 1931, University of Kansas, Research Fellowship in *Chemistry*.

Fellowships in Other Institutions

The following named graduates and students of the University of Kansas have been appointed to Fellowships at other universities for the year 1934-35:

- AMY MAY DOCTOR of Olathe, a junior in the College of Liberal Arts, a Rockefeller Foundation Scholarship at the *Teachers Training College of the Central Institute for the Deaf*, St. Louis.
ROBERT EDWIN GANOUNG, B.S. Elec. Eng. 1934, Fellowship in Electrical Engineering at *Massachusetts Institute of Technology*; also one of six national scholarships awarded by Tau Beta Pi.
WILLIAM CONYERS HERRING, A.B. 1933, Fellowship in Astronomy at *Princeton University*.
HAROLD JENKINS, A.B. 1929, M.A. 1931, Fellowship in English at *Yale University*.
KEITH WHITTAKER JOHNSON, A.B. 1934, the Susan Linn Sage Fellowship in Philosophy at *Cornell University*.
R. BURTON POWER, B.S. Elec. Eng. 1933, Scholarship in Electrical Engineering at *Harvard University*.
FREDERICK EDWARD WIRTH, A.B. 1932, M.A. 1932, Fellowship in Latin, *University of Chicago*.

Interneships

Interneships for members of the graduating class of the School of Medicine have been awarded as follows:

- CLAIR M. ALDERSON, *Charity Hospital*, Cleveland, Ohio.
WINSTAN L. ANDERSON, *Trinity Lutheran Hospital*, Kansas City, Mo.
HENRY HERRINGTON ASHER, *City Hospital*, Akron, Ohio.
GREGG BARR ATHY, *St. Margaret's Hospital*, Kansas City, Kan.
JOHN FRANCIS BARKER, *C. & O. Hospital*, Huntington, W. Va.
PRESTON EARL BEAUCHAMP, *Bethany Hospital*, Kansas City, Kan.
VICTOR B. BUHLER, *Anker Hospital*, St. Paul, Minn.
HOWARD LOWELL COHENOUR, *St. Joseph's Hospital*, Kansas City, Mo.
QUINTON DIETER CONKLIN, *Bell Memorial Hospital*, Kansas City, Kan.
RALPH MEARLE CAULK, *Trinity Lutheran Hospital*, Kansas City, Mo.
KENNETH EVANS COX, *Albany Hospital*, Albany, New York.
MAHLON HENRY DELP, *Bell Memorial Hospital*, Kansas City, Kan.

- THOMAS GAILLARD DUCKETT, *Bell Memorial Hospital*, Kansas City, Kan.
HARRISON EILERS, *San Diego County General Hospital*, San Diego, Calif.
MIRIAM D. EUBANK, *New York Infirmary for Women and Children*, New York, N.Y.
JOSEPH G. EVANS, *Lutheran Hospital*, St. Louis, Mo.
CLARENCE LEROY FRANCISCO, *City Hospital*, Cleveland, Ohio.
ROBERT CLARENCE FREDEEN, *Hospital of the Good Shepherd*, Syracuse University, Syracuse, N.Y.
LAWRENCE EASTER GEESLIN, *Bell Memorial Hospital*, Kansas City, Kan.
EMERY T. GERTSON, *St. Francis Hospital*, Wichita, Kan.
GLENN O. GIFFIN, *Kansas City General Hospital*, Kansas City, Mo.
BILLENS C. GRADINGER, *Broadlawns Hospital*, Des Moines, Iowa.
HOWARD E. HAMILTON, *City Hospital*, Cleveland, Ohio.
RALPH EVERETT HASKELL, *Menorah Hospital*, Kansas City, Mo.
CHARLES FRANCIS HAUGHEY, *St. Anthony Hospital*, Oklahoma City, Okla.
EVERETT F. HAUKENBERRY, *Wesley Hospital*, Wichita, Kan.
J. HESTER HAYNE, *Peiping University Medical College Hospital*, Peiping, China.
HERBERT H. HESSER, *St. Margaret's Hospital*, Kansas City, Kan.
PETER E. HIEBERT, *Bell Memorial Hospital*, Kansas City, Kan.
EDWIN R. HILL, JR., *Monmouth Memorial Hospital*, Long Branch, N.J.
JAMES E. HILL, *St. Francis Hospital*, Wichita, Kan.
JAMES LENTZ HOPE, *St. Francis Hospital*, Wichita, Kan.
ALFRED J. HOREJSI, *Trinity Lutheran Hospital*, Kansas City, Mo.
CHARLES H. ISBELL, JR., *Vanderbilt University Hospital*, Nashville, Tenn.
EDWARD H. KLEIN, *Kansas City General Hospital*, Kansas City, Mo.
LEWIS SCOTT KNISELY, *Kansas City General Hospital*, Kansas City, Mo.
EVERT ALFRED LARSSON, *Mercer Hospital*, Trenton, N.J.
LIDA PAULINE LONGENECKER, *Hospital for Children*, San Francisco, Calif.
GEORGE H. MARTS, *Mublenberg Hospital*, Plainfield, N.J.
LENNERT BOYD MELLOTT, *St. Mary's Hospital*, East St. Louis, Ill.
JOHN W. METCALFE, *Harborview Hospital*, Seattle, Wash.
ERNEST MONROE MOORE, JR., *Kansas City General Hospital*, Kansas City, Mo.
ERNEST C. MOSER, *St. Mary's Hospital*, Kansas City, Mo.
SAMUEL BARTON MULLER, *Menorah Hospital*, Kansas City, Mo.
NEWELL NAY, *Santa Barbara General Hospital*, Santa Barbara, Calif.
CHARLES GRATTON OAKES, *St. Joseph Hospital*, Kansas City, Mo.
FRANCIS OBERT, *Bethany Hospital*, Kansas City, Kan.
CHARLES NELSON OUTT, *St. Margaret's Hospital*, Kansas City, Kan.
ELLIOTT FINDLEY PARKER, *Mercy Hospital*, Des Moines, Iowa.
GLENN A. PEARSON, *St. Joseph Hospital*, Kansas City, Mo.
KARL HAMILTON PFUETZE, *Gorgas Hospital*, Ancon, Canal Zone.
GLENN JAMES POTTER, *Kansas City General Hospital*, Kansas City, Mo.
FRED E. ROGERS, *St. Margaret's Hospital*, Kansas City, Kan.
HERBERT REMPEL SCHMIDT, *City Hospital*, St. Louis, Mo.

ROBERT PHILIP SMITH, *Bell Memorial Hospital*, Kansas City, Kan.
 NATHANIEL SODERBERG, *Saginaw General Hospital*, Saginaw, Mich.
 FREDERIC AIKEN SPEER, *R. B. Green Memorial Hospital*, San Antonio, Tex.
 HAROLD FERDINAND SPENCER, *St. Margaret's Hospital*, Kansas City, Kan.
 AARON ALFRED SPRONG, *St. Mary's Hospital*, Kansas City, Mo.
 OTIS H. TRUE, *St. Mary's Hospital*, Kansas City, Mo.
 A. DENTON VAIL, *City Hospital*, St. Louis, Mo.
 NELLIE DOROTHY GROSS WALKER, *Braddock General Hospital*, Braddock, Pa.
 ETHEL WATSON, *Mercy Hospital*, Altoona, Pa.
 BYRON EDWARD WILLIAMS, *St. Luke's Hospital*, Kansas City, Mo.
 CHARLES LEONARD WOODHOUSE, *St. Francis Hospital*, Wichita, Kan.
 CHESTER LEE YOUNG, *Trinity Lutheran Hospital*, Kansas City, Mo.
 RALPH ZUPANEC, *Bell Memorial Hospital*, Kansas City, Kan.

Residencies

Residencies at Bell Memorial Hospital for 1934-35 have been awarded as follows:

MAX G. BERRY, Assistant Resident in Medicine.
 MORRIS HARLESS, Assistant Resident in Surgery.
 GEORGE V. HERRMAN, Assistant Resident in Pediatrics.
 ROBERT MAXWELL, Assistant Resident in Obstetrics and Gynecology.
 JOHN F. SIMON, Assistant Resident in Medicine.
 LESLIE SMITH, Assistant Resident in Medicine
 HAROLD L. GAINNEY, Resident in Medicine.

Scholarships at the University of Kansas

Scholarships for the academic year 1934-35 have been awarded as follows:

The Alumni Loan Scholarship in Journalism, established in April, 1934, by Roy Roberts, managing Editor of the Kansas City Star, and Don Mellett Lecturer for 1934, first awarded for 1934-35 to RUTHERFORD BIRCHARD HAYES of Hunter, a senior in the College.

The Edwin Emery Slossen Scholarship in Science to CLYDE WILLIAM TOMBAUGH of Burdett, a junior in the College.

Summerfield Scholarships for a freshman group for the academic year 1933-34 were awarded after the 1933 Commencement to LAWRENCE BIGELOW of Hutchinson, EARL DEARBORN of Manhattan, GEORGE HAMILTON of Lawrence, KENNETH HAWLEY of Herington, GEORGE JOHNSON of Junction City, JOHN LINTNER of Wichita (East), CHARLES MANLOVE of Larned, KENNETH MIDDLETON of Salina, WAYNE PARCEL of Wichita (East), CLAUDE PARISH of Wichita (North), ROBERT THORPE of Wichita (North).

Summerfield Scholarships for a freshman group for the academic year 1934-35 have been awarded to FRERE ARMSTRONG of Toronto, HENRY BARKER of Junction City, KEITH COAD of Winfield, ROBERT CRANK of Salina, GEORGE COPENHAVER of Chanute, ARTHUR LATHAM of Winona, KENNETH MOORE of Pratt, DEAN MOORHEAD of Hugoton, LOREN McCORMACK of Mildred, ELLIS PARDEE of Wichita (North), EUGENE RICKETTS of Paola, RICHARD STARK of Topeka, HERVEY VIGOUR of Seneca, DONALD VOORHEES of Leavenworth, CHARLES WARD of Peabody, MARTIN WITHERS of Clay Center, and LOUIS YORK of Wichita (East). Summerfield Scholarships are renewable to all worthy students, to provide a four-year college course.

The Selden Lincoln Whitcomb Fellowship in Comparative Literature to FRANCES EUGENIA GILLOCK of Lawrence, a Graduate student and to KENNETH GUY ROCKWELL of Lawrence, a Graduate Student.

The Hulda Ise Scholarship to DOROTHY MARIE SHOCKEY of Lawrence, a sophomore in the College.

The German Exchange Scholarship for 1934-35 to JOHN W. GILCHRIST of Kingman, a graduate student. The student to come from Germany to the University will be announced this summer.

The Herbert Spencer Hadley Scholarship in Law to JOHN HOWARD LEHMAN of Abilene, a second-year Law.

The Porter Scholarship in the School of Medicine to CHARLES ISBELL, JR., of Kansas City.

The Eliza Perry Memorial Scholarship to GEORGE CLIFTON TRIVILLO of St. Augustine, Ill., a senior in the School of Fine Arts.

The Lucile Brown Rankin Memorial Scholarship in Design to GLADYS MAE MYERS of Lawrence, a junior in the School of Fine Arts.

The Arthur Jerome Boynton Memorial Scholarship to EMMA JULIA WAGNER of Lawrence, a senior in the College.

The American Bankers' Association Scholarship to WILLIAM T. CORCORAN of Lawrence, a junior in the School of Business.

The Charles S. Griffin Memorial Scholarship to PAUL RICHARD MILLIGAN of Abilene, a junior in the College.

The Eliza Matheson Innes Memorial Scholarship to RUTH ANNA HARDACRE of Kansas City, Mo., a Graduate student.

The Marcella Howland Memorial Scholarship to RACHEL FELICE McCUNE of Ottawa, a senior in the College.

The Caroline Mumford Winston Memorial Scholarship to RUTH EVELYN BARNARD of Lawrence, a senior in the College.

The Lawrence Branch of the American Association of University Women Scholarship to OLIVE EDMONDS of Oskaloosa, a junior in the College.

The University Women's Club Scholarship to CARYL EMMA ANDERSON of Beattie, a junior in the College.

The Sarah M. Emery Memorial Scholarship to ELLEN DUNGAN of Sedan, a sophomore in the College.

The George Innes Memorial Scholarship to FERNE LORELLE COPENHAVER of Abbeyville, a sophomore in the College.

The Lathrop Bullene Memorial Scholarship to HELEN MARGARET WELCH of Lawrence, a senior in the College.

The Ida H. Hyde Scholarship to ROZELLA PEARL BLOOD of Wichita, a Graduate student.

The University Housemothers' Association Scholarship to MELVIN AUGUST McCOLLOM of Dodge City, a senior in the College.

A Betty Washington Chapter of D.A.R. Scholarship to ELIZABETH FRANCES HAMILTON of Topeka, a senior in the College.

A Betty Washington Chapter of D.A.R. Scholarship to BERNADINE BERKLEY of Hamlin, a junior in the College.

A Betty Washington Chapter of D.A.R. Scholarship to ORLA TOWANDA GABBART of Ottawa, a senior in the College.

A Gertrude Bullene Weaver Memorial Scholarship to FREEMAN G. FRENCH of Topeka, a sophomore in the College.

A Gertrude Bullene Weaver Memorial Scholarship to SAUL DAVID KASS of Topeka, a junior in the College.

The Kappa Beta Scholarship to ETHEL FENSTEMAKER of Lawrence, a sophomore in the School of Fine Arts.

The Friends In Council Scholarship to LAURENCE REYNOLDS SMITH of Paola, a senior in the College.

A Women's Self Government Association Scholarship to HAZEL LOUISE OVERLEY of Merriam, a senior in the College.

A Women's Self Government Association Scholarship to ESTHER LORINE SCHROEDER of Paola, a sophomore in the College.

A Women's Self Government Association Scholarship to IRIS McDONALD of Chapman, a sophomore in the College.

A Women's Self Government Association Scholarship to VIVIAN OYLER of Wellington, a sophomore in the College.

A Women's Self Government Association Scholarship to BILLOWEEN MACOUBRIE of Lawrence, a sophomore in the College.

The Emily V. Berger Memorial Scholarship to FRANCES WOOLEY of Kansas City, graduate student in the School of Education.

A Kansas City Alumni Association Scholarship to PAUL RAPORT of New York, a junior in the College.

A Kansas City Alumni Association Scholarship to JOHN SANDERS SEIGLE of Cottonwood Falls, a sophomore in the School of Engineering and Architecture.

A Junction City Branch, American Association of University Women Scholarship to FRANCES MARGARET BALLARD of Attica, a graduate student.

A Junction City Branch, American Association of University Women Scholarship to RUTH ADELINE RILEY of Lawrence, a graduate student.

The Helen K. Stevens Memorial Scholarship, established by Chi Omega, to MILDRED ELIZABETH GRABLE of Elkhart, a sophomore in the College.

The Tennola Literary Club Scholarship to FRANCES JEANETTE LANGWORTHY of Leavenworth, a junior in the School of Fine Arts.

The Ingleside Literary Club Scholarship to FLORENE BRISCOE of Topeka, a junior in the School of Fine Arts.

A David L. Rowlands Memorial Scholarship to DELMER LAWRENCE CURRY of Topeka, a junior in the College.

A David L. Rowlands Memorial Scholarship to VERNON MYERS FRENCH of Topeka, a junior in the College.

A David L. Rowlands Memorial Scholarship to PAUL PAGE MCKINNON of Cherryvale, a junior in the College.

A David L. Rowlands Memorial Scholarship to PAUL EDWIN WILSON of Quenemo, a sophomore in the College.

The Pi Lambda Theta Scholarship to NEVA ELAINE WHITMER of Wilson, a senior in the College.

A Class of 1932 Memorial Scholarship to LLOYD A. METZLER of Lawrence, a senior in the School of Business.

A Class of 1932 Memorial Scholarship to EDWARD PAUL MICEK of Lawrence, a special student in the School of Engineering and Architecture.

The George Innes Music Scholarship to CORINNE VIVIAN DICK of Coffeyville, a senior in the School of Fine Arts.

The Mrs. Luella F. Stewart Art Scholarship to EVELYN ALDINE DEGRAW of Holton, a student in the School of Fine Arts, and to PEARLE CATHERINE LAMONT of Lawrence, a freshman in the School of Fine Arts.

The Mrs. Luella F. Stewart Music Scholarship to MILLARD MYRON LAING of Lawrence a student in the School of Fine Arts.

The Frances Schlegel Carruth Scholarship, to the graduate of the Lawrence High School passing the best examination in two-years entrance German at the University, to DOROTHEA WEINGARTNER.

The holders of the Watkins Hall Scholarships in the year 1933-34 were as follows:

HENRIETTA CATHERINE BATES, Salina; ROBERTA LOUISE BADSKY, Topeka; BERNADINE BERKLEY, Hamlin; HELEN GERTRUDE BIXBY, Coffeyville; RUTH ELIZABETH BLACK, Kansas City, Mo.; JOYCE MAXINE BOYLE, Potter; FLORENE BRISCOE, Topeka; LYDIA ANNA BROCKER, Paola; ELIZABETH MARIE BROWN, St. Joseph, Mo.; VIRGINIA YETIVE CONE, Wellington; MARGARET MAY COWLES, Sibley; DONNA LEE DUNWOODY, Kansas City, Mo.; MARTHA LOUISE EVERITT, Chanute; ROSEMARY ELIZABETH FISCHER, Parsons; ORLA TOWANDA GABBART, Ottawa; SHIRLEY ELLEN GIBSON, Kansas City, Mo.; VIVIAN ELIZABETH GOULD, Parsons; VIRGINIA HARDESTY, Merriam; VYONDA HELFINSTINE, Lebanon; MARIE KREHBIEL, Detroit; FRANCES JEANETTE LANGWORTHY, Leavenworth; JOSEPHINE LEE, Louisburg; ELIZABETH MAE LEWIS, Lebo; MINNIE NAOMI MCDANIEL, Independence; IRIS McDONALD, Chapman; HELEN JANE MONTZINGO, Attica; VIVIAN CLAIRE OYLER, Wellington; IRENE PENNOCK, Salina; BEULAH PINNEO, Salina; MILDRED REYNOLDS, Paola; DOROTHEA MARY SANDERS, Eureka; FRANCES LUCILLE SMITH, Paola; PHAGIE SUTTON, Kansas City; LULU INEZ TILLMAN, Topeka; MARY ETHEL WELKER, Centerville; NEVA ELAINE WHITMER, Wilson; CZARINA VAN DUYN WISEMAN, Ottawa; and LOUISE ARLINE YEOMANS, Cottonwood Falls.

Prizes

Prizes have been awarded as follows to students of the University of Kansas in the academic year 1933-34:

The University Honor Award for 1933, to the senior man whose influence on University student life was adjudged most wholesome and helpful, to ROBERT HAROLD DENTON of Jewell.

The Hattie Elizabeth Lewis Prize Essays in Applied Christianity: First Prize to EDGAR LANGSDORF of Topeka for an essay on "The Teachings of Jesus and the Treaty of Versailles."

Second Prize to FRANCES WOOLLEY of Kansas City for an essay on "The Application of the Teachings of Jesus to the Relationships Between the United States and Japan."

Third Prize to JOHN W. GILCHRIST of Kingman for an essay on "The Principles, A Profession and the World."

Fourth Prize to EDWARD PAUL MICEK of Berlin, Germany, for an essay on "The Problems of Youth."

The William Herbert Carruth Memorial Poetry Prizes:

First and Second Prizes awarded jointly to THOMAS EDWIN MOORE of Wichita for his poem, "Midwestern Elegy," and to RAY MILLER of Latham for his poem, "Spring 1934."

Third Prize to ELLEN CATHERINE MARSH of Omaha, Neb., for her poem "Tribute: A Sonnet on Jews."

Honorable Mention to KENNETH GROVER BORN of Osage City, for his poem, "A Fragment"; to HARRIETTE ESTHER SHERWOOD of Kansas City, Mo., for her poem, "Microcosm"; and to KEITH WHITAKER JOHNSON of Eureka for his poem, "Destiny."

The A. Morris Ginsberg Prize in Medicine to the junior student who has done the best work in the department of medicine, first awarded in 1934 to JOHN A. DILLON, JR., of Larned.

The Hannah Oliver Latin Prize, provided by friends of Miss Hannah Oliver, A.B. 1874, associate professor emerita, to MAURICE A. HATCH of Lawrence, a junior in the College.

Honors in English to RAY MILLER of Latham, a senior in the College.

The Honor Graduate of the R.O.T.C.; to JAMES K. HITT of White Cloud, a senior in the College; and to CHARLES E. SPAHR of Independence, Mo., a senior in the School of Engineering and Architecture.

The Phi Chi Theta Scholarship Key to the woman of the School of Business ranking highest in scholarship, activities, and leadership to MARIAN JEANETTE FITZWATER, of Goff.

The Lawrence Reserve Officers Association Cup and Gold Marksmanship Medal to JUSTICE R. NEALE of Lawrence, a junior in the School of Education.

The Mortar and Ball Medal to HERBERT A. TRACY of Neodesha, a student in the College; to MAX EVERETT FESSLER of Garnett, a sophomore in the College; and to FRANCIS MAXWELL KENNEDY of Lawrence, a freshman in the College.

The Delta Sigma Pi Scholarship Key to the ranking man in the School of Business to OLIVER W. HOLMES, of Lawrence.

The Kappa Chapter of Phi Sigma Research Award to ROBERT L. BRIGDEN of Lawrence and to CHARLES R. GILBERT of Leavenworth, students in the Graduate School.

The Lambda Chapter of Chi Omega Prize for the ranking woman in the department of economics in the College of Liberal Arts and Sciences, or the School of Business to LEAHMAE BROWN of Lawrence.

The Alpha Chi Sigma Honor Award in Chemistry to WALLACE MYERS ANDERSON of Cottonwood Falls, a senior in the College and to WILL SWERDLOFF of Kansas City, Mo., a senior in the College.

The Lehn and Fink Gold Medal in the School of Pharmacy to ENNIS DALLAS SANDBERG of Eldorado, a senior in the School of Pharmacy.

The American Pharmaceutical Association Membership Award to ERNEST WILLIAM BYE of Emporia, a senior in the School of Pharmacy.

The Tau Sigma Scholarship Medal to the sophomore in the School of Engineering and Architecture having the highest freshman scholastic standing, to GUY CLIFTON OMER of Lawrence.

The Kansas State Section of the American Society of Civil Engineers Award to the civil engineer with the highest scholastic standing for four years to CHARLES EUGENE SPAHR of Independence, Mo.

The Alpha Rho Chi Medal to CLEMENS WILLIAM WOLF of Lawrence.

The American Institute of Architects Medal for excellence in architectural work throughout the course to HUGH WILSON HIATT of Kansas City, Mo.

The Thayer Medal for 1933 for excellence in architectural design to WILLIAM THORNTON BECK of Holton.

The Scarab Medal for excellence in sophomore design to RAYMOND JUNG of Lawrence.

The Alice Chittenden Prize for excellence in freshman architectural work to MARGARET NANCY WHEELER of Lawrence.

The Rowlands Prize in Design to ROBERT WILLIAM COOKE of Scottsville, a junior in the School of Fine Arts.

The Rowlands Prize in Antique Drawing to CHARLES EVERETT PACKARD of Kansas City, a student in the School of Fine Arts.

The Don Carlos Short Story Prize to ELIZABETH MAE LEWIS of Lebo, a senior in the College.

The Sigma Delta Chi National Scholarship Award to MARION BEATTY of Kansas City; to ARNOLD FREDERICK KRETZMANN of Sylvan Grove; to MAURICE SMYTHE RICE of Paola; and to LAWRENCE STERLING of Rochester, N.Y.

The Henry Schott Memorial Prize in Journalism to JAMES R. PATTERSON of Paola and MARION BEATTY of Kansas City.



UNIVERSITY OF KANSAS
LAWRENCE

Sixty-second Annual
COMMENCEMENT

JUNE 8 TO 11, 1934



PROGRAM OF EVENTS

FRIDAY, JUNE 8

- 8:00 p.m. Commencement Recital, University Auditorium, School of Fine Arts.

SATURDAY, JUNE 9

- 9:00 a.m. Golf for Visiting Alumni, Lawrence Country Club.
- 10:00 a.m. Alumni Registration Opens, Memorial Union.
- 3:00 p.m. Baseball, Varsity Field, Seniors vs. Alumni and Faculty.
- 4:00 p.m. Engineers' Meeting, Marvin Hall.
- 5:30 p.m. Torch Chapter Mortar Board Reunion.
- 6:00 p.m. Sachem Powwow.
- 7:30 p.m. Open Air Band Concert, Dyche Museum Steps, K. U. Band.
- 8:30 p.m. University Reception, Memorial Union.
- 9:30 p.m. Alumni-Senior Reunion Dance, Memorial Union.

SUNDAY, JUNE 10

- 11:00 a.m. Commencement Services at all Lawrence Churches.
- 2:00 p.m. Open House at all University Buildings.
- 2:30 p.m. Band Concert, Fowler Grove.
- 2:30 p.m. Reunion, Wesley Foundation, Price Home, 1209 Tennessee.
- 3:00 p.m. Reunion, Westminster Foundation and Phi Chi Delta, Westminster Hall.
- 3:30 p.m. Reunion Tea, Kappa Beta (formerly Bethany Circle) Myers Hall.
- 3:30 p.m. Reunion Tea, Kappa Phi, Price Home, 1209 Tennessee.
- 4:30 p.m. Class and Group Reunion Dinners. All Reunion Headquarters at Memorial Union.
- Class of 1884.
 - Class of 1909.
 - Group of All Students Before 1880.
 - Group of 1899, 1900, 1901, 1902.
 - Group of 1918, 1919, 1920, 1921.
- 7:00 p.m. Baccalaureate Sermon Exercises, Stadium. Sermon by the Most Reverend Francis Clement Kelley, D. D., Bishop of Oklahoma City and Tulsa, Roman Catholic Church.

MONDAY, JUNE 11

- 7:15 a.m. Class of 1934 Breakfast, Memorial Union.
- 7:45 a.m. Y.W.C.A. Cabinet and Alumnae Strawberry Breakfast, Henley House.
- 10:00 a.m. Annual Alumni Association Meeting, Fraser Hall.
- 11:00 a.m. Annual Alumni Address, Fraser Hall.
- 12:15 p.m. University Dinner, Memorial Union.
- 4:00 p.m. Phi Beta Kappa Annual Meeting, 222 Administration Building.
- 5:30 p.m. Luncheons served at University Cafeteria.
- 7:00 p.m. Commencement Exercises, Stadium. Address by William Allen White, Editor of the Emporia Gazette.



SIXTY-SECOND ANNUAL COMMENCEMENT
UNIVERSITY OF KANSAS

COMMENCEMENT EXERCISES

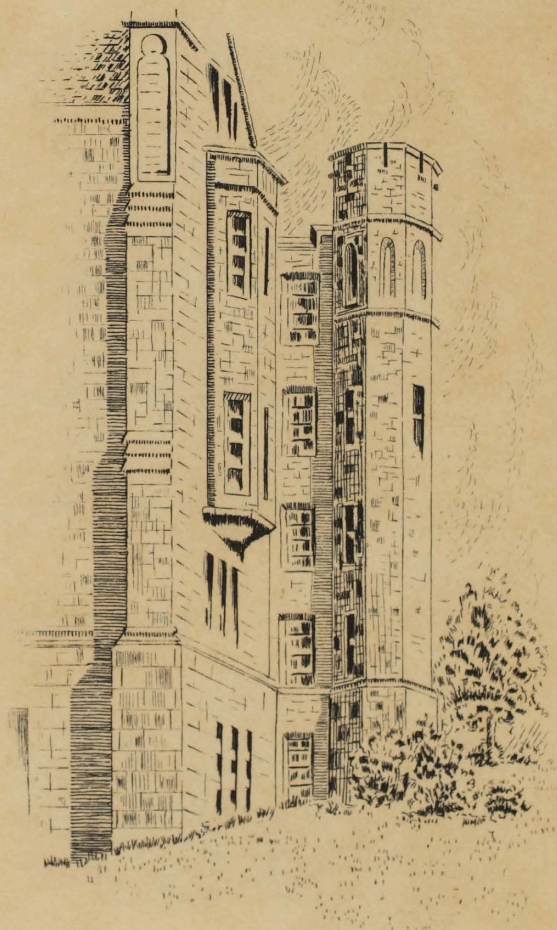
Memorial Stadium, June 11, 1934

at 7:00 p.m.

RESERVED TICKET

This ticket admits to the **Reserved Section** of Memorial Stadium, or, in event of rain, to reserved section of the Auditorium, **until 7:15 p.m.** No reservation after 7:15.

UNIVERSITY *of* KANSAS



The Senior Class
of the
University of Kansas
requests the honour of your presence
during the exercises of the
Sixty-second Annual Commencement
June eighth, ninth, tenth, eleventh
nineteen hundred and thirty-four
Lawrence, Kansas

Commencement Week Program

FRIDAY, JUNE EIGHTH

- 8.00 P. M. Commencement Recital, University Auditorium, School of Fine Arts

SATURDAY, JUNE NINTH

- 9.00 A. M. Golf for Visiting Alumni, Lawrence Country Club
10.00 A. M. Alumni Registration Opens, Memorial Union
3.00 P. M. Baseball, Varsity Field, Seniors vs. Alumni and Faculty
4.00 P. M. Engineers' Meeting, Marvin Hall
5.30 P. M. Torch Chapter Mortar Board Reunion
6.00 P. M. Sachem Powwow
7.30 P. M. Open Air Band Concert, Dyche Museum Steps, K. U. Band
8.30 P. M. University Reception, Memorial Union
9.30 P. M. Alumni-Senior Reunion Dance, Memorial Union

SUNDAY, JUNE TENTH

- 11.00 A. M. Commencement Services at all Lawrence Churches
2.00 P. M. Open House at all University Buildings
2.30 P. M. Band Concert, Fowler Grove
4.30 P. M. Class and Group Reunion Dinners. All Reunion Headquarters at Memorial Union
Class of 1884
Class of 1909
Group of All Students Before 1880
Group of 1899, 1900, 1901, 1902
Group of 1918, 1919, 1920, 1921
7.00 P. M. Baccalaureate Sermon Exercises, Stadium. Sermon by the Most Reverend Francis Clement Kelley, D.D., Bishop of Oklahoma City and Tulsa, Roman Catholic Church

Commencement Week Program

MONDAY, JUNE ELEVENTH

- 7.15 A. M. Class of 1934 Breakfast, Memorial Union
- 7.45 A. M. Y. W. C. A. Cabinet and Alumnae Strawberry
Breakfast, Henley House
- 10.00 A. M. Annual Alumni Association Meeting, Fraser
Hall
- 11.00 A. M. Annual Alumni Address, Fraser Hall, by
Florence Finch Kelly, '81, g'84
- 12.15 P. M. University Dinner, Memorial Union
- 4.00 P. M. Phi Beta Kappa Annual Meeting, 222 Ad-
ministration Building
- 5.30 P. M. Luncheon served at University Cafeteria
- 7.00 P. M. Commencement Exercises, Stadium. Address
by William Allen White, Editor of the
Emporia Gazette

Senior Class Officers

HOWARD S. HOOVER.....*President*
MEREDITH FILKIN.....*Vice-President*
VIRGINIA STERLING.....*Secretary*
WILLIAM HOWARD.....*Treasurer*

Senior Class Committees

Invitations

ROBERT HARTLEY, Chairman

Vivian Andrews

James Christy

Helen Russell

Caps and Gowns

MAURICE RICE, Chairman

Paul Borel

Joe Buehler

Connie Miller

Senior Breakfast

DOROTHY BRINKER, Chairman

Loberta Brabant

Virginia Ruff

Betty Nuzman

Senior Class Committees

Memorial

GEORGE BROWN, Chairman

Ned Embry

Paul Harrington

Lila Lawson

Marie Wachter

Publicity

CHILES COLEMAN, Chairman

Homer Jennings

Howard Turtle

Class History

Loberta Brabant

Class Prophecy

Jimmie Patterson

Senior Cake-Walk Managers

James Asher

Edwin Sharpe

Student Representatives on General Committee

Josephine Pyle

Walter Simmons

Student Representatives on Reception-Ball Committee

Beverly Burns

Logan Lane



College of Liberal Arts and Sciences

Candidates for Degree of Bachelor of Arts

- | | |
|-----------------------------|--------------------------------|
| *Lucille Albright | William F. Blair |
| Laurel Charlene Allen | Ruth Elizabeth Blaul |
| Lila Mae Anderson | Roberta Virginia Blinn |
| Thekla Beryl Anderson | William Leland Blizzard |
| Wallace M. Anderson | Thayer Madison Boardman |
| Elaine Vivian Andrews | Loberta Brabant |
| *Virginia E. Arnold | William B. Bracke |
| George LeeRoy Ashley | Virginia King Brenton |
| Clarence Willet Asling | *Madelyn Jane Bridges |
| Helen Alice Mary Aston | Dorothy Marie Brinker |
| William H. Avery | Lydia Anna Brocke |
| F. Ernest Ayers | *Leahmae Brown |
| Catharine Elizabeth Bagley | Madre Brown |
| William Thorne Bailey | Mussetta Hazel Brown |
| Elizabeth Emily Baisinger | Martha Brownlee |
| Frances Margaret Ballard | R. Will Burnett |
| Elodie Bancroft | Leo C. Burns |
| Charlotte Felice Bangs | *Ruth Caroline Cady |
| Nadyne Barker | Martha Allen Cameron |
| Robert H. Barnhart | *Evalyn E. Carpenter |
| Samuel Brewster Bartlett | *Bertram Caruthers |
| Walter Emerson Baxter | Wilbur Griffin Cauble |
| *Velma Teresa Beard | Helen Geneva Christman |
| *Marion Beatty | Alyce Jean Clark |
| Sarah Margaret Beaumont | Dorothy Virginia Clarke |
| Donal James Bell | Louise Clarke |
| George Sinclair Benson | Arthur Lee Coil |
| Beverly Lucile Berns | Simon P. Cole |
| Louise Ermorine Beverly | Chiles Crittenden Coleman, III |
| Robert Jefferson Black, Jr. | Albright Collinson |

* Degrees granted since June, 1933

College of Liberal Arts and Sciences

Candidates for Degree of Bachelor of Arts

- | | |
|-----------------------------|------------------------------|
| *Carolyn Combe | Albert Nicholas Evans |
| Nancy Wilcox Coombs | Arthur Wilbur Evans |
| Arthur Deane Cork | *Everett B. Everhart |
| Allen Joseph Coughenour | Jake Pfister Farney |
| James Monroe Cox | Robyl S. Fassnacht |
| James Taylor Craig | Robert John Fegan |
| Rosa Lenore Crawford | J. Eldon Fields |
| Laura Alice Cunningham | Meredith Faxon Filkin |
| Mary Jane Dale | Frances Marian Fink |
| Dorothy Mae Davis | Helen T. Fisher |
| Edward Kingsley Dawson | *Arthur Raymond Flick |
| *Alice May DeForest | Dorothy Foster |
| *Maxine Devlin | *Blanche Chrysanthia Foushee |
| Grace Mildred DeWeese | *Mary Alene Fulton |
| Charles T. Dews | *Jack W. Galbraith |
| Robert La. Dill | *Pauline E. Gallagher |
| Della Deen Dodge | Robert E. Gard |
| *Mary Lucille Drake | *John W. Gilchrist |
| *Helen Sheila Drennan | Helen Jo Gleeson |
| Jean Caldwell Dunn | *Kermit E. Goodger |
| Donna Lee Dunwoody | Vivian Elizabeth Gould |
| *Sister Mary Dolorine Eakes | *Dorothy May Green |
| Georgiana Eberhard | Margaret C. Gregg |
| *Mary Naomi Edwards | Robert C. Gribble |
| Walter E. Elder | Melvin Eugene Griffith |
| Paul Hiatt Elleman | *Phillip Gussion |
| *Howard Golden Ellis | Margaret Hagen |
| Ernest Ned Embry | Mary Ann Haines |
| Robert Kersey Entriken | *Lucile E. Hammons |
| Gene Beal Erwin | Ruth Anna Hardacre |

* Degrees granted since June, 1933

College of Liberal Arts and Sciences

Candidates for Degree of Bachelor of Arts

Verna May Hardin	Fred Wilson Jeans
Harry Harkness, Jr.	Elnora Burgess Johnson
Paul R. Harrington	Harry Franklin Johnson
*Cecil D. Harris	Keith Whitaker Johnson
Mary Louise Harrison	Oliver Carl Johnson
Elmer F. Hartman	Benita Lucile Jones
*Elmira Emerson Hassig	Elizabeth Ruth Jones
*Harry E. Hayes	Minnie Mildred Jones
Mary Louise Heinemann	Richard C. Jones
*Lucile Adelia	William E. Jones
Hekelnaemper	*Marvin E. Jordan
Morris Dwight Hildreth	Ila Mae Kennison
*Emma Jean M. Hill	Valley Ruth Kimball
Laura Elizabeth Hinshaw	Estil Joseph Kious
James Kohland Hitt	Virginia Lee Kistler
Marguerite Nadine Hollecker	*James Reuben Knighton
Howard Spencer Hoover	Frederick Louis Koerber
*Reed Kelsey Hoover	Arnold Frederick Kretzmann
Donald L. Hope	John Branch LaDuex
Susanna Garnette Hughes	*Marion Lake
*Wilbur Eugene Humphrey	Euless Dean Landis
Frances Carol Hunter	Logan J. Lane, Jr.
Janet Hurd	Edgar Bloch Langsdorf
John Wesley Hurse, Jr.	Jane Louise LaPierre
Bernice Margaret Hutchins	Pauline Laptad
*Margaret Ince	*Ona Mae Larner
Geraldine Ellen Irion	Lila Alice Lawson
*Barbara Isbell	Dorothy Elizabeth Leib
Jessamine Leah Jackson	Esther Virginia Leigh

* Degrees granted since June, 1933

College of Liberal Arts and Sciences

Candidates for Degree of Bachelor of Arts

Helen Dale Leonard	Margaret May Mellott
Elizabeth Mae Lewis	Frank Cluxton Melone
*Eugenia Joanne Lewis	M. Davenna Melton
William Charles Lewis	Freda Mae Merrick
Lucile A. Libel	Perry D. Merrill
Parmer B. Lindsay	Ray Miller
Chesterman Cain Linley	Stanford Miller
Menelaus Frank Litras	Walter Conrad Miller
Wilbur Stuart Long	Charles Frederick Mitchell
Rowena Emeline Longshore	Forrest Jones Moore
Emily Dunlap Lord	Dorothy Evelyn Morgan
Jacob Merle Lough	Robert Johnson Mounsey
Eleanor Janet Lucas	Edythe Ella Mulveyhill
Ralph Arthur Ludwick	Mary Elizabeth Myers
*Maxine Paula Luther	Howard King Nason
Rachel Maddux	Helen Ethelwyn Naylor
*Mary Madison	Betty M. Neff
Herman Ernest Mai	Richard Oldfield Nelson
Fred Albert Malo	Anna Lucile Nesselrode
Katherine H. Marion	Louella Grace Newell
Jeanne L. Martin	Arian Lucretia Newman
*Dan Cunningham Matthews	Miller Nichols
Nicholas Mayrath	Betty Jane Nuzman
Charles F. McCamish	Charles Gratton Oakes
Minnie Naomi McDaniel	*Helen Maurine O'Malley
*Donald Morris McFarland	Gretchen Anne Orelup
*Ethylbert Frances McGee	Curtis V. Packard
Wanda McKnight	Thomas Page
*William Klahr McNown	Roland Virgil Parker

* Degrees granted since June, 1933

College of Liberal Arts and Sciences

Candidates for Degree of Bachelor of Arts

Ruth Parmenter	*Irma Lois Rizley
James R. Patterson	*Edwin Norris Robertson, Jr.
Walter Hunter Payne	Lee E. Rook
Carol Haines Pearson	Reine Rucker
Lois Kouns Pearson	I. Virginia Ruff
*Roscoe Sherman Pebley	Marjorie Frances Rumble
Lawrence Raymond Penner	Catherine Alice Salisbury
Glenn R. Peters	Blanche Sams
Shelley Francis Peters	Mary E. Sanders
Jack W. Pfeiffer	Claude Marshall Scott
C. Kermit Phelps	*Evelyn Searcy
William Elvin Pine	Annette Louise Seip
*Louis Henry Plummer	Ray Charles Senate
*M. J. Poppen	Jane Baker Sharer
Letha Maria Potter	Edwin Lee Sharpe
*Clifford Elton Powell	C. Lawrence Sherwood
*Mary Belle Prowell	Harriette Esther Sherwood
Josephine L. Pyle	Robert O. Sherwood
Henry Herman Quigley	Mary Elizabeth Shuler
Martha Belle Ralston	Walt R. Simmons
William H. Ramey	Edward Archibald Smiley
Leland Price Randles	Dorothy Elizabeth Smith
Miriam Reagor	*Eileen Georgina Smith
Elmer William Renker	Harold Larwill Smith
George Stryker Rhodes	Orval L. Smith
Maurice Smythe Rice	Owen Heaton Smith
Lewida Corinne Richards	Robert Edward Smith
*Laura Alberta Riley	Richard Dunham Sowder
*Burton Clifford Risser	Veda Margaret Spencer

* Degrees granted since June, 1933

College of Liberal Arts and Sciences

Candidates for Degree of Bachelor of Arts

- | | |
|----------------------------|----------------------------|
| Frances Sarah Stark | *Wendell Gerald Vincent |
| *Mary Margaret Starr | Marie Wachter |
| Raymond Carl Stauffer | Leota Lorraine Wagner |
| Walt A. Steiger | Walter Sherman Wagner |
| *Lawrence Sterling | *Anne Walbridge |
| Virginia Louise Sterling | Frederick Arthur Walker |
| Dorothy Marie Stewart | Robert Fencil Wallace |
| George Edward Stewart | Wayne Orrin Wallace |
| Winifred Louise Stilwell | Marvin Jay Wanamaker |
| Rae Evelyn Stoland | *Eva Kingman Watson |
| Charles Otis Stout | Carl August Wattenberg |
| *Grace Sullivan | John D. Way |
| Jane Gary Surface | Richard Gaylard Weaver |
| *Major M. Swan | Nadine Weber |
| *Alvin L. Swenson | *Helen Jeanette Wedow |
| Kathryn Rachel Taggart | Lucile Weiss |
| Dorothy Helen Taylor | Mary Ethel Welker |
| Florence Irene Teubner | Doris Carlene Westfall |
| Samuel Theodore Thierstein | Eleanor Coles Westmoreland |
| Henry Devlin Thomas | Mary Virginia Wheeler |
| Blanche Lucile Thompson | Mary Jane Whitaker |
| *Frances Lucile Tindal | Carol Louise Widen |
| Cecelia Mae Towne | Helen Margaret Wilson |
| Prentice Aaron Townsend | *Lucille Dante Wilson |
| *J. Alden Trovillo | Frederick Jack Windle |
| *Louise Tubbs | *Richard Davis Wolf |
| Dean Whitcomb Tucker | Paul Donald Woodmansee |
| Howard W. Turtle | Wilda Beryl Wright |
| Donald Ernest Underwood | Charles R. Zeskey, Jr. |
| *Frank Ventura | |

* Degrees granted since June, 1933

College of Liberal Arts and Sciences

Candidates for Degree of Bachelor of Science in Medicine

Winstan L. Anderson	George Dinsmoor Marshall
Gregg Barr Athy	George H. Marts
Spencer Harwood Boyd	George Roland Maser
Caroline Christle Brown	Morris Donald McFarland
Benjamin Brunner, Jr.	Harold Bruce Melchert
Ralph E. Bula	John W. Metcalfe
Walter Cummins, Jr.	Harry David Movitz
Robert M. Daugherty	Robert Michael Myers
Mahlon Henry Delp	Ingall Howard Neas
Arthur Charles Elliott	Charles Gratton Oakes
Howard Golden Ellis	Charles Nelson Outt
*Veryl J. Elson	Paul Thurlow Petit
Joseph G. Evans	M. J. Poppen
James Anthony Farren	Henry Francis Quinn
Albert Faulconer, Jr.	Bruce Bailey Rolf
James Brookbank Fisher	Jacob Rosen
Charles S. Fleckenstein	John Marshall Rumsey
James Turton Fowler	Herbert R. Schmidt
Lawrence Easter Geeslin	Herbert Hoyt Schneider
Ernest F. Getto	*Darrel Thomas Shaw
Max Arthur Hammel	Leland Newton Speer
Ernest Edward Harvey	Charles M. Starr
Kenneth W. Haworth	Alford Sidney Steinzeig
Herbert Harold Hesser	Luin Knowles Thacher
Edwin R. Hill, Jr.	Jack Shaver Tucker
Henry Harold Hyndman	Ralph Daniel Turner
Jefferson Davis Kernodle	A. Denton Vail
Jack Kinell	Lloyd Payton Warren, Jr.
Edward H. Klein	Max Welton Wells
Martin P. Koke	Sloan Jacob Wilson
William Frederick Kuhn, II	Francis T. Zinn
Maurice V. Laing	Ralph Zupanec
Arthur Lee Ludwick, Jr.	

* Degrees granted since June, 1933



School of Engineering and Architecture

Candidates for Degree of Bachelor of Science in Architecture

Narciso Enriquez Abella	Joseph Elden Johnson
Dorothy Henrietta Allen	James Layton Terry
William Thornton Beck	Clemens William Wolf

Candidates for Degree of Bachelor of Science in Architectural Engineering

Hugh Wilson Hiatt	Robert William Reynolds
Raleigh Hunter Macklin	James Layton Terry
Neal O. Reyburn	

Candidates for Degree of Bachelor of Science in Chemical Engineering

Harry Howard Alder	Harold Isaac Hoover
*Norman Elroy Baughn	Norman K. Imes
Harold R. Beck	*James S. Naismith
*James Scholl Combs, Jr.	John Alfred Nelson
James Howell Compton, III	John Franklin Redmond
Wesley Edgar Gift	Will Swerdloff
Godfrey B. Grable	David White Thorne

Candidates for Degree of Bachelor of Science in Civil Engineering

Paul A. Borel	*Ura James Hollis
*Theodore Paul Dwyer	*Elwood Richard Leeson
*Edwin Ashley Elliott	*Stanley Barrows Nelson
Frederick William Epps, Jr.	*Harry H. Poteet
*Murray Austin Getz	Felicisimo Diaz Solidarios
*Robert Mason Hair	Charles Eugene Spahr
Glenn Elbert Hands	Mark C. Sykes
Charles Sherman Hazen	*Tom M. Taylor
*George Herbert Hazen, Jr.	Wendell Chambers Wyatt
Marvin Heter	

* Degrees granted since June, 1933

School of Engineering and Architecture

Candidates for Degree of Bachelor of Science in Electrical Engineering

Harold E. Ahlstedt	*Lewis W. Kittrell
*Arnold T. Ashton	Zvonimir Kvaternik
Arthur Grant Banks	*Fred J. Lingel
John A. Bondank	Fred Clark Liscum
John Edward Bondurant	Arthur Kenneth Lohoff
George Carlton Cooper, Jr.	Hugh O. Makinson
William E. Dickinson	Wilbur Lanning Masheter
William Alden Edson	Howard A. Oliphant
Lowell Hammarbeck	Robert C. Oliver, Jr.
Erickson	Richard William Porter
Harold Fellhauer	*Dana Pratt
Kenneth E. Fink	*Harvey Eugene Raymond
*Orrin Cory French	Gilmer L. Reynolds
Robert Edwin Ganoung	Wayne McKinley Sanderson
Robert Luther Glyn, Jr.	Charles Edward Smith
Harry Takashi Hamaishi	Willard Bennett Wallis
John Vincent Hilford	Benjamin Frederick Wheeler
Alfred J. Hoover	Alfred B. White
George E. Hubrig	Lester Herman Wolgast
*Elton Kline Kelley	Roy J. Yates

Candidates for Degree of Bachelor of Science in Industrial Engineering

Arnold B. French	Joseph Letts, Jr.
Verne Russel Hall	Thomas Bartlett Sears, Jr.
Elwood J. Leep	Paul Belles Woodford

* Degrees granted since June, 1933

School of Engineering and Architecture

Candidates for Degree of Bachelor of Science in Mechanical Engineering

George McKibbin Brown	Alfred J. Rapp
Edward Maurice	Noble Pierce Sherwood, Jr.
Bruzelius, Jr.	Garnett W. Shook
Freeman H. Egolf	Donald A. Stark
Leebert Glass	Kenneth M. Stevens
Gaylord Benson Hart	Frederick David Wagner
Stanley Paul McCracken	Edward Raymond Warner
John B. Newell	Jack Weisbein
Edward William Peterson	

Candidates for Degree of Bachelor of Science in Mining Engineering

Cyrus Duncan Cantrell, Jr.	*John Thomas Reynolds
Theodore J. Craig	Charles Stephen Rohrer
Harry H. Holloway, Jr.	Richard Wall Scott
Clayton Baker Ott	

Candidates for Degree of Bachelor of Science (Five Year)

*Murray Austin Getz	Charles Sherman Hazen
Glenn Elbert Hands	David Victory Whitney, III

* Degrees granted since June, 1933

School of Fine Arts

Candidates for Degree of Bachelor of Music Education

Mildred B. Allen	Dorothy Imogene Gaut
Anna Charlaine Armstrong	Catherine Frances Kannapel
Nathalyn Newel Ashe	Helen Lucille Kissell
Medora Irene Bond	Mary Elizabeth Lewis
Mary Elizabeth Brady	Gene E. McKee
*Verl DeChrista Bratton	Ruth Maude Miller
Joseph K. Buehler	Rexford Jackson Shaver
Harold A. Cooke	*Virginia Shive
Virginia Rosalind Cragun	*Maurine Shuler
Madge Mount Craig	*Virginia Elizabeth Simmons
*Llewellyn Sydney David	Robert Murlin Slater
Margaret E. Dortland	Luciene Thomas
Mary Lou Earlenbaugh	Alice Isabel Tuke
Lucille Elizabeth Fisher	*Opal Juanita Wall
Oleta Winona Fitzgerald	

Candidates for Degree of Bachelor of Music

Adelena Jana Druskus	Virginia Willis LaCroix
*Mary Lou Earlenbaugh	Raymond Earl Lawrenson
Nicholas L'Ouveture Gerren	*Doris Reita Novel
Shirley Ellen Gibson	Hilma Delight Powell
Sara Ruth Gregory	Helen Virginia Russell
Genevieve F. Hargiss	Sister Rose Matthew Sillers
Sister Mary Vida Hayes	Wilma Mae Stoner
Leona Mae Jensen	Virginia Maribelle Thies
Sister Etta Louise Knaup	Charles Alexander Wilson

* Degrees granted since June, 1933

School of Fine Arts

Candidates for Degree of Bachelor of Fine Arts

Lyle Marshall Bailey	Elizabeth Carol Higgins
Edith A. Borden	Lucile Mary McIntyre
Maurine Warner Downing	Mary Perkins
Pauline E. Durrett	Elizabeth Ranney
Wanda Margaret Edmonds	Edith June Ritchie
*Jennie Maud Ellsworth	Mildred Julia Sawin
*Alice Louise Geiger	*Inez Elizabeth Simmons
Martha Ann Pauline Gill	Anna Kathrine Stevens
Frances Hamlin	Agnes Wapato

Candidate for Three-Year Certificate in Piano

Helen Virginia Russell

* Degrees granted since June, 1933

School of Pharmacy

Candidates for Degree of Bachelor of Science

Ernest William Bye

Ennis D. Sandberg

*Earle Griffath Walker

Candidates for Degree of Pharmaceutical Chemist

Gerald A. Butel

Mabel Jensen

Edward A. Diekman

I. Hamilton Perkins

Sam S. Freed

* Degrees granted since June, 1933

School of Education

Candidates for Degree of Bachelor of Science in Education

Fern Baker	Elizabeth M. Kimball
Helen Maurine Ballard	Jeannette Austin King
Ormand Beach	Roy G. Klaas
Donald Beatty	*Thelma Wilcox Kratochvil
Phil L. Beatty	Junius O. Laws
*Doloretta Mabel Burns	Clara Frances Lewis
Etta Bieber Cheshire	Mabel Lucy Lynn
Jean Cowan	*M. Roberta Miller
Glenn V. Cunningham	Betty Belle Moore
*Vera Naomi Curtis	Jack E. Naismith
*Grace Anne Dooley	Barbara Jane Neubecker
Lucretta Douglas	Alice Old
Thelma Oveta Douglas	Marian Burns Paulette
Ruth Maxwell Dwight	*Lillian Lenora Peterson
Mary Ann Foley	Beth Ridings
Hinda Jean Fox	Nicholas D. Rizzo
*D. James Giokaris	Belva Beth Roesler
Dorothy Glass	Marvin Henry Rosene
Jessa Mae Golden	*Jael H. Satterwhite
Margaret Lucile Graham	Nelle Glen Seiver
Gladys Porter Gurtler	*Ina May Sheppard
Mamie Hale	Margaret E. Speir
*Maud E. Hewitt	*Emma Vanous
Lena B. Hill	Margaret Thayer Walker
*William E. Hodges	*Mary Long Walker
Elizabeth de Jarnette Howe	Dorothy Marguerite Wood
*Margaret Lee Jackson	Frances Woolley
*Thelma Laurine Kier	Dorothy Zimmerman

* Degrees granted since June, 1933

School of Business

Candidates for Degree of Bachelor of Science in Business

Miguel Raguine Aguilar	Wilford C. Kraft
James Dudley Asher	*Karl R. Leidig
Dale Quentin Baker	*Isaac Norman Magley
Raymond Lamont Barkley	Charles M. McCormick
Lester Thomas Beisecker	Frank Alexander McCoy
Jerrold H. Berman	Tom Meschke
Charles E. Blomquist	James Edmund Metzger
John H. Bluford, Jr.	Marjorie Genevieve Nelson
Rayburn Chalmers Bond	Charles B. Newell
*Leon M. Bornstein	Earle Granville Newman
Kathaleen Louise Boucher	Eugene F. Niswonger
William Henry Buckingham	*Janus F. C. Olsen, Jr.
Robert Franklin Burnett	Woodrow Wilson Painter
H. James Christy	Jule H. Pelofsky
William Winston	Etna Maurice Pyle, III
Cochrane, Jr.	William Ellis Rash
George Ticknor Crawford	Robert Scott Raymond, Jr.
Martha Louise Everitt	Lois Kincaid Richert
*Kenneth E. Ewing	Theodore Rickenbacher
Marian Jeanette Fitzwater	Ronald O. Roberts
Carl A. Fowler	Albert Harold Schmidt
Archibald Joseph Galloway	Jack Theodore Silverwood
*Edward Clifford Gordon	Vern V. Stewart
Don Fredrick Gresser	*Limon E. Stiles
Robert Douglas Hartley	Charles C. Theis
Oliver W. Holmes	Zeanna Lucille Toews
William Gates Howard	Howard A. Turner
M. Lakin Hunter	Alvin E. Walters
Edwin Clifford Jeffries	Milton Richard Webster
Homer Casper Jennings	Arnold Wilson Wolfe
Mell D. Kennedy	Lloyd D. Yenner
Carl B. Kinell, Jr.	Karl Zettl
Kalita Katho Kirkendall	

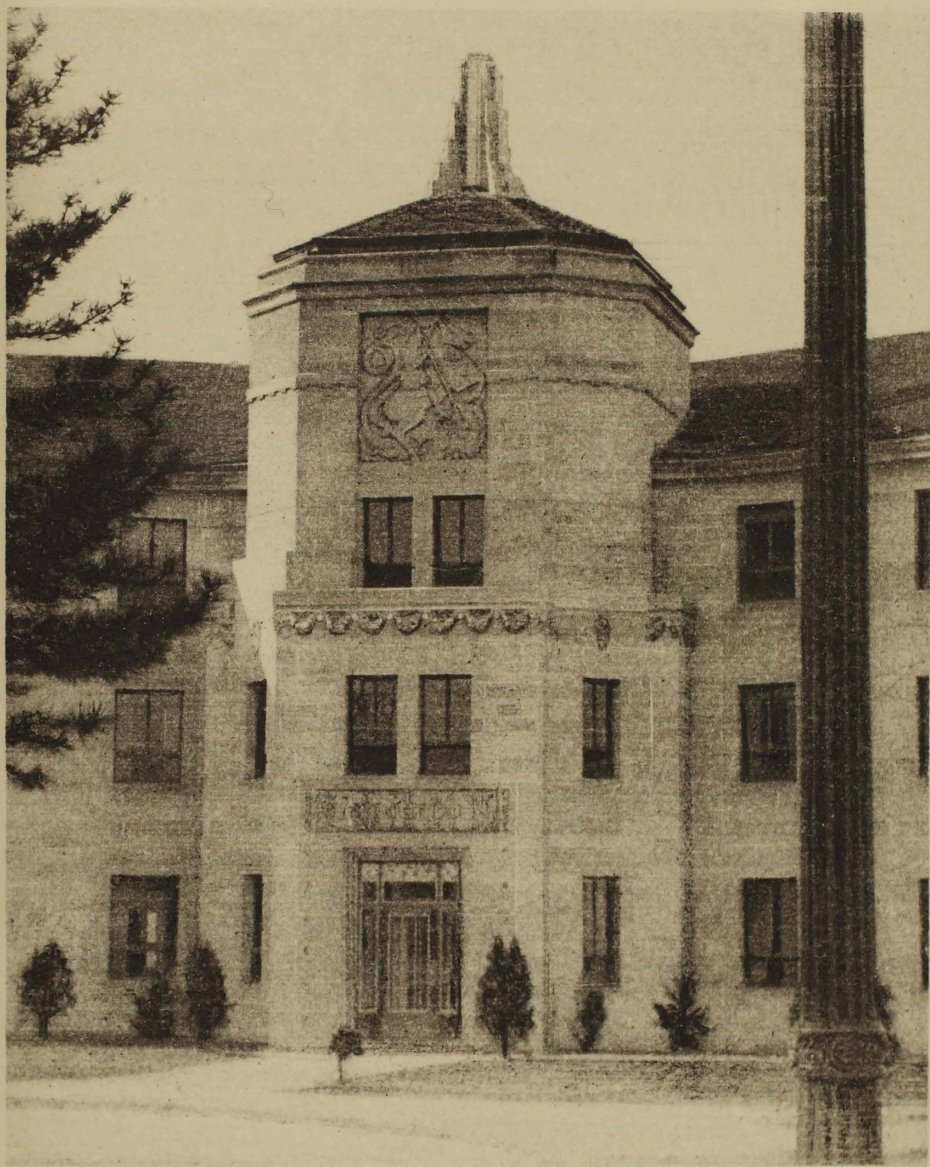
* Degrees granted since June, 1933

School of Law

Candidates for Degree of Bachelor of Laws

*Charles Hal Alderman	Edward Harold Irwin
Guy Weldon Baker	*Robert Reynolds Jones
Carl A. Ballweg	Wesley Willis Kennedy
Richard Arthur Barber	*Warren Wallace Lattimer
*Milton Portis Beach	*Harry Jacob Levine
Horace C. Botsford	Charles H. Menghini
*Salvatore Buccero	Thomas Hansford
William Atwell Chapple	Popplewell, Jr.
Oliver Quincy Claflin, III	*Freeland Franklin Penney
Fred L. Conner	*William Hoadly Powell
Curtis Mitchell Cook	Chandos Judson Pruyn
Jack Copeland	Fayette Edward Rowe
*Charles Warren Day	Paul Vincent Smith
*Everett B. Everhart	Wallace Cody Sullivan
Harry Charles Feingold	Leonard O. Thomas
Clark Milton Fleming	Charles Leamen Vancura
Frank Roberson Gray	Joseph E. Vogler
Harold H. Harding	James Warren Wallace

* Degrees granted since June, 1933



School of Medicine

Candidates for Degree of Doctor of Medicine

Clair Milton Alderson	Edward H. Klein
Winstan L. Anderson	Lewis Scott Knisely
Henry Herrington Asher	Evert Alfred Larsson
Gregg Barr Athy	Lida Pauline Longenecker
John Francis Barker	George H. Marts
Preston Earl Beauchamp	Lennert Boyd Mellott
Victor B. Buhler	John W. Metcalfe
Ralph Mearle Caulk	Ernest Monroe Moore, Jr.
Howard Lowell Cohenour	Ernest C. Moser
Quinton Dieter Conklin	Samuel Barton Muller
Kenneth Evans Cox	Newell Nay
Mahlon Henry Delp	Charles Gratton Oakes
Thomas Gaillard Duckett	Francis Obert
Harrison Eilers	Charles Nelson Outt
Miriam Dorothy Eubank	Elliott F. Parker
Joseph G. Evans	Glenn A. Pearson
Clarence LeRoy Francisco	Karl Hamilton Pfuetze
Robert Clarence Fredeen	Glenn James Potter
Lawrence Easter Geeslin	Fred E. Rogers
Emery T. Gertson	Herbert Rempel Schmidt
Glenn O. Giffin	*Paul Elmer Smith
Billens C. Gradinger	Robert Philip Smith
Howard E. Hamilton	Nathaniel B. Soderberg
Ralph Everett Haskell	Frederic Aiken Speer
Charles Francis Haughey	Harold Ferdinand Spencer
Everett F. Haukenberry	Aaron Alfred Sprong
J. Hester Hayne	Otis H. True
Herbert Harold Hesser	A. Denton Vail
Peter E. Hiebert	Nellie Dorothy Gross Walker
Edwin R. Hill, Jr.	Ethel Watson
James Edward Hill	Byron Edward Williams
James Lentz Hope	Charles Leonard Woodhouse
Alfred J. Horejsi	Chester Lee Young
Charles H. Isbell, Jr.	Ralph Zupanec

* Degrees granted since June, 1933

School of Medicine

Candidates for Certificate of Nursing

Helyn Lucille Baird	Esther Louise Jameson
Greta Bantly	Katherine Griggs King
Josephine Ann Crider	Ruth Kleinsteiber
Frances Evelyn Dawson	Bernice Laws
Emma Opal Dillon	Letha Elfreida Meyers
Laverne Ann Dolecek	Frankie Gromer Newman
Eva Gertrude Foster	Ruby T. Oleson
Hazel Ermen Fulton	Helena Lillian Riordan
Mary Martha Geddes	Maybell Irene Ryan
Mae Lucille Geist	Luella Shaw
Hazel Marie Grimes	Katherine Helen Shotts
Muriel Louise Hayward	*Dorothy Swanson
Blanche Mae Hylton	

Candidates for Certificate of Internship

Clarence Wilber Erickson	Marshall Earl Hyde
Everett J. Garrison	Phillip D. Kernan
Morris Sherman Harless	John F. Simon
Alfred Horton Hinshaw	Leslie Benjamin Smith

* Certificate granted since June, 1933

SECOND QUINQUENNIAL DINNER OF EARLY STUDENTS
University of Kansas
June 10, 1934

o o o

Invocation

Toastmistress -- Mrs. Lizzie Williams Smith '76.

TOASTS

The Stars and the Winds of Mount Oread

"For the stars and the winds are unto her
As raiment, as songs of the harp-player;
For the risen stars and the fallen cling to her,
And the southwest-wind and the west-wind sing."
Mr. Charles F. Scott, '81.

The Flowers of Mount Oread

"And winking Mary-buds begin
To ope their golden eyes."
Miss Kate Stephens, '75.

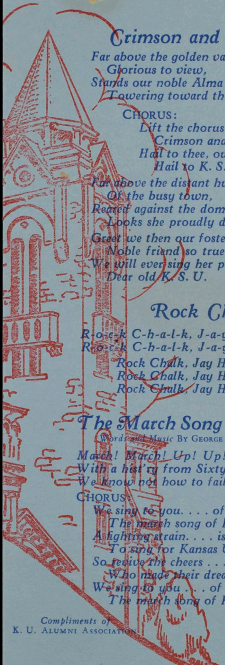
We Early Students

"Ah, how good it feels!
The hand of an old friend."
Professor Miles Wilson Sterling, '83.

Our Professors

"And what delight can equal those
That stir the spirit's inner deep
When one that loves but knows not reaps
A truth from one that loves and knows."
Mrs. Ida Blood Hasselman, '74.

- - -



Crimson and the Blue

Far above the golden valley
Glorious to view,
Stands our noble Alma Mater
Towering toward the blue.

CHORUS:

Lift the chorus ever onward,
Crimson and the blue,
Hail to thee, our Alma Mater,
Hail to K. S. U.

Far above the distant humming
Of the busy town,
Reared against the dome of heaven,
Looks she proudly down.
Greet we then our foster mother,
Noble friend so true,
We will ever sing her praises,
Dear old K. S. U.

Rock Chalk

R-o-c-k C-h-a-l-k, J-a-y H-a-w-k, K. U.

R-o-c-k C-h-a-l-k, J-a-y H-a-w-k, K. U.

Rock Chalk, Jay Hawk, K. U.

Rock Chalk, Jay Hawk, K. U.

Rock Chalk, Jay Hawk, K. U.

The March Song of Kansas U.

Words and Music BY GEORGE H. BOWLES, '08-'11

March! March! Up! Up! Vic—t'ry trail
With a hat'ry from Sixty two
We know not how to fail.

CHORUS:

We sing to you . . . of red and blue,
The march song of Kansas U.
A fighting strain . . . is our refrain
To sing for Kansas U. ;
So receive the cheers . . . of the pioneers
Who made their dreams come true
We sing to you . . . of red and blue,
The march song of Kansas U.

I'm a Jayhawk

BY GEORGE H. BOWLES, '08-'11

Talk about the Sooners,
The Aggies and the Braves,
Talk about the Tiger and his tail—
Talk about the Huskers,
Those old Cornhuskin' boys,
But I'm a bird to make 'em weep and wail.

CHORUS:

'Cause I'm a Jay, Jay, Jay Jay, Jayhawk,
Up at Lawrence on the Kaw—
'Cause I'm a Jay, Jay, Jay Jay, Jayhawk,
With a sis-boom, hip hoorah.
Got a bill that's big enough
To twist the Tiger's tail,
Husk some corn and listen
To the Cornhusker's wail—
'Cause I'm a Jay, Jay, Jay Jay, Jayhawk,
Riding on a Kansas gale.

Stand Up and Cheer

Stand up and cheer,
Cheer loud and long for dear old Kansas,
For today we raise
The Red and Blue above all others,
Our sturdy band now is fighting,
And we are here to win the fray.
We've got the vim—
We're sure to win,
For this is dear old Kansas day.

Play Ball

BY J. C. McCANLES

Play ball today for Kansas
With a Spirit of old K.U.
Play ball today for Kansas
With a vim that will carry thru,
Hit that line a smash, make a hole,
Charge the backfield thru for a goal,
Play ball today for Kansas
Give a Victory to old K.U.