

Sixtieth
Annual Commencement
of the
University of Kansas

BACCALAUREATE
SERVICES



THE MEMORIAL STADIUM
SUNDAY, JUNE 5, 1932
7:30 O'CLOCK

Program

PROCESSIONAL MARCH,

- (a) Grand March from "Rienzi" - - - - Wagner
(b) March from "Ratcharmer of Hamelin" - - Nessler
THE UNIVERSITY BAND, J. C. McCANLES, *Director*.

INVOCATION - - - - - THE REV. A. J. MILLER
Minister to the Evangelical Church

HYMN - - - - - Seymour

Softly now the light of day
Fades upon my sight away;
Free from care, from labor free,
Lord, I would commune with Thee.

Thou, whose all-pervading eye
Naught escapes, without, within,
Pardon each infirmity,
Open fault and secret sin.

Soon, for me, the light of day
Shall forever pass away:
Then, from sin and sorrow free,
Take me, Lord, to dwell with Thee.

Thou who, sinless, yet hast known
All of man's infirmity;
Then, from Thine eternal throne,
Jesus, look with pitying eye. *Amen.*

SCRIPTURE READING - - THE REV. CHARLES W. THOMAS
Student Minister to the First Baptist Church

PRAYER - - - - - THE REV. ROBERT A. HUNT
Minister to the First Methodist Church

SONG, "Ave Maris Stella" - - - - Grieg
UNIVERSITY MEN'S GLEE CLUB, WILLIAM PILCHER, *Director*

BACCALAUREATE SERMON,
"Will the New Day Ever Dawn?"

RABBI FERDINAND M. ISSERMAN
Temple Israel, St. Louis, Mo.

HYMN - - - - - *Duke Street*

O God, beneath Thy guiding hand
Our exiled fathers cross'd the sea;
And when they trod the wintry strands,
With pray'r and psalm they worshipp'd Thee.

Thou heard'st, well pleased, the song, the prayer,
Thy blessing came; and still its power
Shall onward, through all ages bear
The memory of that holy hour.

Laws, freedom, truth, and faith in God
Came with those exiles o'er the waves;
And where their pilgrim feet have trod,
The God they trusted guards their graves.

And here Thy name, O God of love,
Their children's children shall adore,
Till these eternal hills remove,
And spring adorns the earth no more. *Amen.*

BENEDICTION - - - - THE REV. HERBERT L. HUFFMAN
Minister to the Friends Church

RECESSIONAL MARCH,
"Fraternal Spirit" - - - - - *Scull*
THE UNIVERSITY BAND

CONCERT

University of Kansas Band

J. C. MCCANLES, *Director*

SUNDAY AFTERNOON, JUNE 5, 1932

2:15 P.M.

FOWLER GROVE

Program

March:

"CAVALRY TRUMPETS" J. H. Bell

Overture:

"GLADIOLUS" Eisenberg

SELECTION from Ziegfeld's Screen Operetta, "RIO RITA"

Cornet Solo:

"MY MOTHER" J. C. McCanles
J. C. MCCANLES

Descriptive Scene:

"THE OLD GRIST MILL" Weber

SELECTION from the Comic Opera, "PRINCESS PAT" Herbert

March:

"OLD THUNDERER" Sousa

0/17

1932

Dedication of
Watkins Memorial
Hospital



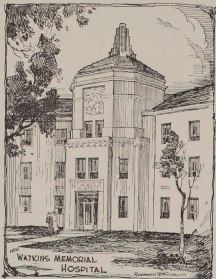
UNIVERSITY OF KANSAS
SUNDAY, JUNE 5, 1932
3:00 P.M.

IN PRESENTING the Watkins Memorial Hospital to the University of Kansas, I had in mind, first, a memorial to Mr. Jabez B. Watkins, who, in a large measure, made this project possible and, second, a desire to contribute to your welfare. I feel that the future success and happiness of yourselves, as well as the future prosperity of the state, depends to a considerable extent on the proper care of your health. I hope you will appreciate this gift in the spirit in which it is given, that you will show that appreciation by your care of the facilities placed at your disposal, and a proper respect for the instructions and regulations given by the staff in charge. If this is done, the knowledge of the service given by this hospital throughout future years will be my greatest happiness."

—The Donor's Statement.



MRS. ELIZABETH M. WATKINS



Program

CHANCELLOR E. H. LINDLEY, *presiding*

Introduction of Guests

CHANCELLOR LINDLEY

Presentation of Hospital to the State

MRS. J. B. WATKINS

Acceptance of the Gift

HONORABLE OSCAR STAUFFER

Member of the Board of Regents

Address

"The Hospital as a Stabilizing Influence,"

DR. S. J. CRUMBINE, Director

American Child Health Ass'n., New York

Music by the K.U. Band

The WATKINS MEMORIAL HOSPITAL

The building which is being dedicated today represents one of the most valuable private gifts yet made to the University of Kansas, and is a monument to the generosity of a far-sighted benefactor of Lawrence and the university community. A thing of beauty, Watkins Memorial Hospital is no less distinguished for its well-rounded completeness—its fitness to serve the purpose for which it has been built. No student hospital in the country is better equipped; only a few approximate this hospital as a center designed for the medical care of students.

Watkins Memorial Hospital has a normal capacity of forty-six beds, besides having reserve wards for use if they should ever be needed. The equipment includes



PATIENTS' ROOM, WATKINS MEMORIAL HOSPITAL

an up-to-date operating unit with adjacent room for sterilizing dressings and water and producing distilled water, a complete x-ray and fluoroscopic equipment for diagnostic work, an electro-cardiograph, an ultra violet lamp, a basal metabolism machine, and an automatically controlled oxygen machine. Every room is beautifully furnished; and nothing has been neglected which would insure, not only the active treatment of the sick, but as pleasant a stay for them as is humanly possible.

Mr. Jabez B. Watkins, in whose honor the building is named, was for many years one of the most prominent men in the state of Kansas. From his arrival in Lawrence in 1873 to his death in 1919, he made the force of his influence felt both as a business man and as a strong and high-minded citizen. It is altogether fitting that his memory should be enshrined, as it were, in the beautiful building so generously donated by his widow.

THIS HOSPITAL IS THE GIFT
OF ELIZABETH MILLER WAT-
KINS, IN MEMORY OF HER
HUSBAND, JABEZ B. WATKINS.

*"Our Youth Will Dwell in a
Land of Health and Fair
Sight and Sounds."—PLATO*



University of Kansas

UNIVERSITY
DINNER

THE SIXTIETH ANNUAL
COMMENCEMENT



THE MEMORIAL UNION
MONDAY, JUNE 6, 1932
12:30 P.M.

Guests of Honor Today

✓ ✓

MEMBER OF THE BOARD OF REGENTS

✓ ✓ ✓

✓ ✓

CLASS OF 1882

✓ ✓ ✓

✓ ✓

CLASS OF 1907, QUARTER CENTURY
REUNION

✓ ✓ ✓

✓ ✓

GROUP OF 1888-'89-'90-'91

✓ ✓ ✓

✓ ✓

GROUP OF 1926-'27-'28-'29

✓ ✓ ✓

Menu

✓ ✓

PINEAPPLE COCKTAIL

✓ ✓ ✓

FRIED SPRING CHICKEN

✓ ✓ ✓

PARSLEYED POTATOES

✓ ✓ ✓

GREEN BEANS

ROLLS

✓ ✓ ✓

TOMATO SALAD WITH
CUCUMBER DRESSING

✓ ✓ ✓

FRESH STRAWBERRY ICE CREAM

✓ ✓ ✓

CAKE

COFFEE

CRIMSON AND THE BLUE

*Far above the golden valley
Glorious to view,
Stands our noble Alma Mater
Towering toward the blue.*

CHORUS

*Lift the chorus ever onward,
Crimson and the blue,
Hail to thee, our Alma Mater
Hail to K.S.U.*

*Far above the distant humming
Of the busy town,
Reared against the dome of heaven,
Looks she proudly down.*

*Greet we then our foster mother,
Noble friend so true,
We will ever sing her praises,
Dear old K.S.U.*

† † †

I'M A JAYHAWK

By GEORGE H. BOWLES, '08-'11

*Talk about the Sooners
The Aggies and the Braves,
Talk about the Tiger and his tail—
Talk about the Huskers,
Those old Cornhuskin' boys,
But I'm a bird to make 'em weep and wail.
'Cause I'm a Jay, Jay, Jay, Jay, Jayhawk,
Up at Lawrence on the Kaw—
'Cause I'm a Jay, Jay, Jay, Jay, Jayhawk,
With a sis-boom hip hoorah.
Got a bill that's long enough
To twist the Tiger's tail,
Husk some corn and listen
To the Cornhusker's wail—
'Cause I'm a Jay, Jay, Jay, Jay, Jayhawk.
Riding on a Kansas gale.*

Presentation of
JUDGE STEPHENS
PORTRAIT



UNIVERSITY OF KANSAS
MONDAY, JUNE 6, 1932
9:00 a.m.

Presentation of Portrait of

JUDGE NELSON TIMOTHY STEPHENS
(Painted from life about 1875)

Upon Whose Advice This School of Law
Was in 1878 Founded

† † †

A Gift From His Daughter

MISS KATE STEPHENS
of the Class of 1875

† † †

MONDAY, JUNE 6, 1932

ORDER OF EXERCISES

1 1 1

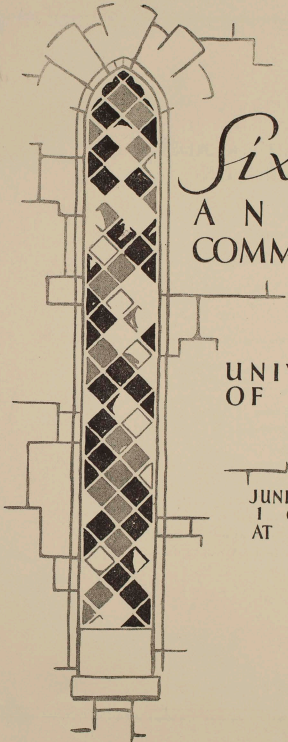
The Library of the School of Law
DEAN ROBERT M. DAVIS, *presiding*

Presentation of Portrait
DOCTOR FRANK STRONG, *Ex-Chancellor*

Acceptance on Behalf of University
CHANCELLOR E. H. LINDLEY

Address
HONORABLE CYRUS S. CRANE, '78

1932
62
460



Sixtieth
A N N U A L
C O M M E N C E M E N T

U N I V E R S I T Y
O F K A N S A S

J U N E T H E S I X T H
1 9 3 2
A T S E V E N P . M .

ORDER OF THE ACADEMIC
PROCESSION

1915

THE UNIVERSITY MARSHALS

THE CHANCELLOR AND GOVERNOR

THE VICE-PRESIDENT AND SPEAKER

THE REGENTS

DEANS OF THE SCHOOLS

FACULTIES OF THE SEVERAL SCHOOLS

THE CANDIDATES FOR DEGREES

THE GRADUATE SCHOOL

THE SCHOOL OF MEDICINE

THE SCHOOL OF LAW

THE SCHOOL OF BUSINESS

THE SCHOOL OF EDUCATION

THE SCHOOL OF PHARMACY

THE SCHOOL OF FINE ARTS

THE SCHOOL OF ENGINEERING AND ARCHITECTURE

THE COLLEGE OF LIBERAL ARTS AND SCIENCES

THE ORDER OF EXERCISES

PROCESSIONAL MARCH:

"Fare-U-Well" - - - - - J. C. McCanles
(Played by Request.)

THE UNIVERSITY OF KANSAS BAND
J. C. McCANLES, *Director*

INVOCATION - - - - - THE REV. THEODORE H. ASZMAN
Minister to the First Presbyterian Church

ADDRESS:
"The Modern University,"
WALTER DILL SCOTT, Ph.D., LL.D.
President of Northwestern University

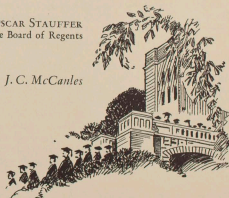
GREETINGS: - - - - - HONORABLE HARRY WOODRING
Governor of Kansas

ADDRESS TO THE CLASS AND
CONFERRING OF DEGREES: - ERNEST HIRAM LINDLEY, Ph.D., LL.D.
Chancellor of the University of Kansas

INTERMEZZO: - - - - - A. W. Ketelby
THE UNIVERSITY BAND

PRESENTATION OF
DIPLOMAS: - - - HONORABLE OSCAR STAUFFER
Member of the Board of Regents

RECESSIONAL MARCH:
"On to Victory" - - - - J. C. McCanles
THE UNIVERSITY BAND



THE FIRST COMMENCEMENT
JUNE 11, 1873

PRAYER

BY THE REVEREND DR. DANIEL READ, PASTOR OF THE
FIRST BAPTIST CHURCH

DEDICATORY ADDRESS AND PRESENTATION OF DIPLOMAS,
CHANCELLOR JOHN FRASER

ADDRESS

"THE HIGHER EDUCATION: ITS RELATION TO THE POLI-
TICS AND ECONOMICS OF THE STATE"
THE HON. J. J. INGALLS

Diplomas were presented in this order:

RALPH COLLINS, bachelor of arts.
MURRAY HARRIS, bachelor of civil engineering.
MISS FLORA RICHARDSON (COLEMAN), bachelor of arts.
L. D. L. TOSH, bachelor of arts.

Another member of the group, FRANK LINDLEY WEAVER,
returned to the University, completed his work in 1923 for a
B.S. in civil engineering, and was assigned to the class of 1873.

All members of this class are now deceased.

The Sixtieth Commencement

A BRIEF REVIEW

SIXTY-SIX YEARS of service to the State of Kansas are rounded out with the Sixtieth Annual Commencement of the University of Kansas, observed today.

Year by year the institution has grown until today a great circle of buildings looks down on the scene of the Commencement exercises. Today, a thousand graduates receive their degrees, and next September probably two thousand Freshmen will be initiated into life at the University of Kansas. In the same stadium seats where nearly a half-score of recent graduating classes have received their diplomas, the Freshmen gather under autumn stars to hear anew the story of the founding of this University, and to pledge fidelity to its ideals. Each year they watch the runner with symbolic torch bring a flame from the hearth on the site of old North College to kindle a new fire before the great seal of the University.

In these 60 commencements, more than 17,500 degrees have been awarded to nearly 16,000 different persons. More than 54,000 different persons have entered the doors of the University, and 38,000 more have received instruction through correspondence and extension classes.

Physically, the University has grown from one small building on a ten-acre tract to its present proportions of thirty major buildings on the 160-acre tract at Lawrence and the two tracts aggregating 23 acres at Kansas City. The student group is one hundred times as great as it was when the preparatory department was hastily organized to provide for those who offered themselves as its first students.

Inc calculable benefits to the state and the nation have come from the lives and influence of the men and women of character who have served on its faculties, and highly important contributions to science, art, and government have been made by the young men and women who have received a part of their life training on this campus, and have gone into their places in the world.

Possibility of a university here was one of the subjects of conversation, tradition says, among those pioneers who spent an August night on Mount Oread upon their first arrival from the East to found a free-state town in Kansas. The first map of Lawrence shows city blocks platted for university purposes. Each territorial constitution in turn, and the

state constitution when it was adopted, provided for higher education for the young people of the prairie state.

The Topeka constitution of 1855 provided for the establishment of a university for the promotion of literature, the arts, sciences, medical, and agricultural instruction, and the Free-State legislature under this authority voted to establish a state university at Lawrence.

The Lecompton constitution of 1857 asked the President of the United States to set aside 72 sections of land "solely for the use of said seminary," and the Leavenworth constitution of 1858 provided that, "as the means of the state will admit, educational institutions of a higher grade shall be established by law."

Finally, the Wyandotte constitution of July, 1859, later adopted as the constitution of the state, directed the establishment by law of a state university, "for the promotion of literature and the arts and sciences."

WHILE the constitution makers were planning for the future, the settlers in the free-state outpost of Lawrence were early taking steps to bring into reality the "seminary of higher learning" they had visualized. Naturally, they turned to their benefactor, one of the founders of the New England Emigrant Aid Society, Amos A. Lawrence, and from him received every encouragement. As early as 1856 he asked Charles Robinson, later to become governor of the state, and a liberal benefactor of the State University, to spend some money in laying foundations for a "Free-State College." The next year Mr. Lawrence transferred to the local trustees notes that had been given him by the Lawrence University of Appleton, Wisconsin, aggregating with interest \$11,696.14.

The following year a group, representing the Presbyterian Church in the United States of America, undertook to found a university. A committee headed by Dr. Charles E. Miner obtained a charter from the territorial legislature, and with title to the "North College" property from the city, started erection of a building 36 by 60 feet in dimensions, two stories high.

This committee hoped to put its "Lawrence University" project on such a firm basis that the Amos

Lawrence gift would be available, and that other gifts would be received. This group issued a printed circular, listing six faculty members, and outlining in detail courses for a three-year academic department, a three-year scientific department, and a four-year collegiate department. One session of three months was held in the Unitarian church building starting in September, 1859.

That same summer, a group of Congregationalists had investigated Kansas as a site for a denominational college, and obtained tentative agreements giving them the Amos Lawrence fund, but the drought of 1860 which hampered the Presbyterians in their building project, discouraged the Congregationalists. They later founded their college at Topeka (Washington College).

FRRIENDS of education, still courageous, formed a new committee, chartered in 1861, under the auspices of the Episcopal church, for the organization of "Lawrence University of Kansas." Doctor Miner was one of the incorporators, but the principal agent of the enterprise was the Reverend Charles Reynolds, rector of the Episcopal church at Lawrence. Dissensions prevented progress, and in 1863 the city of Lawrence repossessed itself of the North College property for a city school site, over the protest of the Reverend R. W. Oliver, successor to the Reverend Mr. Reynolds. Two days later occurred the Quantrell raid, which again diverted attention from education.

A legislative act of February 11, 1863, located a state university at Lawrence, provided the city of Lawrence gave a tract of 40 acres and raised an endowment of \$15,000. Charles Robinson offered to furnish the required 40 acres from his land "above the city," if the city would deed him a half-block immediately south of the school foundations on Mount Oread.

This was done, and even before the first building had arisen on the site between Tenth and Eleventh, Ohio and Indiana—the original Mount Oread—beginnings had been made in assembling the present campus, in a tract extending from Thirteenth to Sixteenth street, along the west side of Oread avenue and the present lilac hedge. The western limits of this original tract were midway between the Chemistry and Administration buildings of the present.

Legislative action of March 1, 1864, established the University, and the governor named a board of regents. Three weeks later, the Reverend R. W. Oliver, rector of the Protestant Episcopal church of

Lawrence, was elected chancellor and president of the regents (although not a member of that board). By assembling interest on the Amos Lawrence notes and balances from relief funds contributed to sufferers in the Quantrell raid, the regents resumed construction, and finished a stone building 50 feet square and three stories high, on the foundations begun by the Presbyterians and added to somewhat by the Episcopalians.

With care to distribute faculty memberships among different religious denominations, the regents named as the first faculty, Elial Jay Rice, David Hamilton Robinson, and Francis Huntington Snow. The first named remained in Kansas only a year, but the others remained for long periods and Doctor Snow gave his whole lifetime to the upbuilding of the institution, filling many years with teaching, serving a dozen years as its chancellor, and by his indefatigable interest in scientific matters endowing the University with a spirit that has brought it into national prominence through the men of science it has contributed to American industry and education.

VISION has ever outstripped actuality in the life of the University of Kansas.

The very morning in September, 1866, that the carpenters finished their work on the original building, the prospective students were invited in for conference, and the opening exercises of the new institution were held.

"Our first class consisted of 22 boys and 18 girls¹ from 15 to 25 years of age," wrote Doctor Snow to a friend in Massachusetts. "None of them was ready for the Freshman class. The faculty hurriedly made a preparatory course of two years to meet the exigency."

Meeting exigencies has been a part of the University administration from that time forward.

When John Fraser was elected to become chancellor, his salary was to be \$3,000 a year. The legislature that winter failed to include the item; a vacancy occurred in the teaching staff, and General Fraser came anyway, accepting the first year the \$1,600 provided for the teacher.

IN SPITE of the handicaps which the University has always faced, it ever has been a growing institution. It was founded in a period in which the state was in a most desperate financial situation, and drought and insect pests harassed the people.

¹ Later enrollments brought the year's total to 55.

Its first active chancellor, John Fraser (Chancellor Oliver was a member of the Board of Regents rather than of the teaching staff), found it a preparatory school inadequate to its needs, even at that time. He left it housed in a beautiful and commodious building (Fraser Hall), said to have been the largest school building in the country at the time, with classes fully organized, and doing work of collegiate grade.²

Chancellor Fraser had been a military man, with the militarist's impatience at delay. However, he remained until two classes had been graduated, and was succeeded by the Reverend James Marvin, of Meadville, Pennsylvania.

Chancellor Marvin brought to his work high ability as an organizer. He harmonized a disorganized faculty situation, and met the problems arising from further legislative curtailments. In his time the preparatory department reached its maximum, the College of Arts nearly doubled its enrollment, the departments of law and music were established, and the normal department and graduate study were begun.

Chancellor Lippincott's administration from 1882 to 1889 saw the establishment of courses in pharmacy and of art, and the discontinuance of the normal department, which had been started by Chancellor Marvin on legislative instructions.

Professor Snow, one of the three men who had formulated the first courses of study for the University, back in 1866, and who had continued an indefatigable member of the faculty over the years, was called to the Chancellorship in 1890, following the illness and resignation of Chancellor Lippincott, and a short interim administration of Regent W. C. Spangler.

ONE OF the first things Chancellor Snow did was to effect a reorganization of the University, in 1891 discontinuing the preparatory department, and establishing the Schools of Liberal Arts, Engineering, Law, Fine Arts, and Pharmacy. Definite organization of the School of Medicine, long dreamed of, came almost at the last of his administration.

Chancellor Snow, valedictorian of his class at Williams college, had aspired to the chair of Greek in the newly established University, but the apportionment of subjects gave him mathematics and natural science, which so interested him in entomology that he made it his life work. The University's splendid collections of the present are monuments to his devotion.

² S. A. Riggs, in *Graduate Magazine*, January, 1906.

Attention to detail marked his life. Page upon page of his accession book contains entries in his own handwriting. Day by day for the forty years that he was at the University he kept a detailed weather record that gives the University one of the oldest meteorological records in Kansas.

His research into Kansas entomology, disclosed more than 200 new species of insects of all orders. He was the first to catalog Kansas birds, describing more than 300 varieties.

After Chancellor Snow's retirement W. C. Spangler again filled out the year until the appointment in 1902 of Dr. Frank Strong, then president of the University of Oregon. The University here had then grown from the preparatory school of the 1860's to an institution of eight different schools, with a student enrollment of more than 1200, and a faculty of 175.

WHEN DR. FRANK STRONG came to Kansas thirty years ago, old North College was still in use, and on the present campus stood Fraser, the Medical (now Journalism) building, Snow Hall, Spooner library, and the Chancellor's residence, Blake hall, Fowler shops, and the old heating plant. Chemistry building and Dyche Museum were just being completed.

With a rapidly growing student body, need for buildings was pressing, and the engineering and geology buildings, engineering laboratory, and Green hall were erected. The east unit of the Administration building was constructed, and buildings were placed on the first School of Medicine campus, provided for through the generosity of Dr. Simeon Bell of Kansas City.

In the 18 years that Doctor Strong was Chancellor, attendance increased from 1200 to 4200, the faculty from 175 to 256, and the graduating classes from 200 to 425. Since 1920 he has been professor of law.

DR. ERNEST HIRAM LINDLEY has been Chancellor since 1920, in a period of stabilization of the University organization, of expansion, of state service, and of the bringing of the building equipment forward in accordance with the needs of a growing institution.

Early in Dr. Lindley's administration, plans took form for a memorial to the University's losses in the World War, and resulted in the Kansas Memorial Union, and the first units of the stadium, which was finished with funds from other sources.

Housing of women students was studied, with the

result that several co-operative houses were established. University-operated residence halls for women were later provided by the state in Corbin hall and in the gift of Watkins hall by Mrs. J. B. Watkins. The Auditorium and new Snow hall for biological departments have been erected.

Chief in the building program of this administration is the progress made on the medical center at Kansas City, Kan., where a 150-bed ward building and a nurses' home flank the administration building with its clinics, dispensary, and class rooms, and makes it possible to envision the medical plant designed for the Kansas City site.

This decade's building program is estimated to have totalled \$3,336,000, of which \$866,000 was in gifts to the state and the rest from legislative appropriation.

A comprehensive program for beautification of the campus is nearing completion, with campus drives paved and a great part of the campus landscaped.

During Dr. Lindley's administration, a plan of student government through the Men's Student Council and the Women's Self-Government Association was devised and put into effect.

Re-establishment of supervision of the University by a non-political Board of Regents six years ago reaffirmed the principle of academic freedom, already well established on the campus of Kansas.

The School of Business, organized in 1924, has become firmly established.

Direct and tangible service to the State is given by the University through the Geological survey, the food and drug laboratory, water and sewage laboratory, and the field surveys in entomology and sociology and by the school service bureau. The extension division, by correspondence study and extension classes, adds 2000 to the number each year receiving definite instruction from the University.

ACHIEVEMENTS of the University of Kansas faculty and graduates can only be suggested here. Men and women with the Kansas imprint are to be found in all quarters of the globe. They are holding commanding positions in science, journalism, engineering, and education. Current directories show a higher proportion of K.U. graduates distinguished in engineering than from any except two large Eastern professional schools. Outstanding character of Kansas work is generally recognized among educators.

Mention may be made of only a few, including Professor Robert Kennedy Duncan, whose plans for

industrial chemistry first worked out here brought about the founding of the Mellon Institute of Industrial Research at Pittsburgh, with him as its head. His successor and present head of the Institute is also of Kansas training, and a half its staff is from K.U.

Others of the "Bailey's boys," trained under Dr. E. H. S. Bailey, now nearing 50 years connection with the University of Kansas, and an emeritus professor of chemistry, included E. V. McCollum, discoverer of vitamins; E. C. Franklin, former president of the American Chemical Society and this year the recipient of the Willard Gibbs medal; and the late E. E. Slosson, founder of Science Service, as well as a teacher, author, and editor.

Mention should be made of James H. Canfield, who brought to the classroom an amazing personality and a brilliant understanding of American history, civics, and the Constitution of the United States; and Ephraim Miller, teacher of mathematics and human living, and for a time Dean of the College; and William Herbert Carruth, whose poetry brought notice to the University; and James Woods Green, first Dean of Law; and L. E. Sayre, for more than thirty years Dean of the School of Pharmacy; and Frank W. Blackmar, who applied theories of sociology to the intensely practical service of prison reform; and L. L. Dyche, originator and chief collector for the natural history museum; and Handel T. Martin, whose search and labor added much to the knowledge about Kansas fossils.

Then there was Samuel Wendell Williston, who made Kansas a center of knowledge on geological paleontology, and gave inspiration to many students who later ranked high in that field; and Erasmus Haworth, now retired, who popularized geological information and was largely instrumental in establishing the Kansas Geological Survey. There was Lucien I. Blake who was sending under-water signals in the Kaw before Marconi spanned the Atlantic without wires; and A. M. Wilcox, who spent his declining years as curator of the classical museum.

No less than 25 present members of the University teaching staff have been with the institution for 30 years or more, adding year by year the impress of their knowledge and their influence on the lives of the young people of Kansas. Several are on an emeritus basis, but most of them are still actively engaged in their teaching work.

The story of others whose services to the University is in continual remembrance follows the listing of Candidates for Degrees

CANDIDATES FOR DEGREES

COLLEGE OF LIBERAL ARTS

Presented by JOSEPH GRANGER BRANDT, *Dean*

Bachelor of Arts

MYRL RAYMOND ADAMS Udall	MARY AGNES BRENNAN Borice Springs	KENNETH CARL CRUMMINE Lawrence	CARRIE MARY FANNING DeSoto
DOROTHY DOUGLAS ATTCHISON Lawrence	CLITA BRIDELL BROMAN Lawrence	RALEIGH WOODWARD CULP Beloit	MARGARET FARR Lawrence
*HAROLD EWING ALLEN Lawrence	JOHN EDWIN BUEHLER Seneca	WILLELLA CURNUTT Kansas City, Mo.	HELENDORIS FEAR Kansas City, Mo.
HUBERT LEE ALLEN, JR. Kansas City, Mo.	ROBERT INCALLS BUMP Torrington, Wyo.	DOROTHY LOUISE DAVIS Leavenworth	JOHN PAUL FEIST Bartlesville, Okla.
ELESA FOLLETT ANDERSON Clarke	VELMA BURLESON Kansas City	HELEN DAVIS Lawrence	*MARY LOUISE FENBERG Kansas City, Mo.
FRANCES JEAN ARBUCKLE Sterling	DONALD MOTT BURNETT Kansas City, Mo.	*JAMES DAVIS, JR. Wichita	QUERINO B. FERRY Philippine Islands
ELIZABETH BAGBY Vinita, Okla.	*ROBERT WILLIAM BURTON Joplin, Mo.	JOHN JEFFERSON DAVIS Kansas City, Mo.	JAMES BROOKBANK FISHER Bartlesville, Okla.
*GLENN HARRIS BAIRD Agenda	*DOROTHY ELEANOR CAFFYN Lawrence	ALICE LUCILLE DICKINSON Kansas City, Mo.	LESLIE HOWES FISHER, JR. Topeka
RICHARD ARTHUR BARBER Lawrence	*GEORGE EDWARD CALLAHAN Lawrence	JACOB ALAN DICKINSON Independence, Mo.	MORTIMER EDMUND FISHER Lawrence
CAROL LOUISE BARDO Arkansas City	MARGARET FRANCES CALLAHAN Rencelle	HAROLD E. DILLEY St. Joseph, Mo.	*SYBIL VIRGINIA FISHER Kansas City
*FRANCES HALLER BATES Kansas City	G. GORDON CANNON Iola	RICHARD LEROY DOLEGER Wilson	FRED LOCKWOOD FLEMING Emporia
JAMES A. BAUSCH Wichita	FRANCES JOSEPHINE CARR Lawrence	VIVIAN LENORE DOWNEY Coffeeville	*DONALD EDMUND FLETCHER Lawrence
*EVERETT WILSON BEARD Seaford	CATHERINE CATLIN Topeka	MERTLE ALBERTA DOYLE Douglas	*HUBERT FLOERSCH Topeka
*PRESTON EARL BEAUCHAMP Kansas City	*RUTH ELIZABETH CHALLANS Newton	*MARION ALICE DRAKE Topeka	ALICE FONTRON Hatchinson
*GENEVIÈVE M. ELISE BERO Pawnee	LENORE FRANK CHAMBERS Kansas City, Mo.	MABEL ELLEN DRANEY Fairview	PAUL CLARENCE FOSTER Lawrence
CAROLINE A. BERTRAM Hiddam	MARY LOUISE CHAPMAN Newton	*THOMAS GAILLARD DUCKETT Lamar, Mo.	ANNA SYLVIA FRANCIS Kansas City
*RICHARD ELY BIRD, JR. Wichita	DOROTHY FERNE CHRISTENSEN Jurisdiction City	CYNTHIA ANN DUNGAN Waukegan	*CLARENCE LEROY FRANCISCO Kansas City
CORA MELISSA BLACKSHERE Cottonwood Falls	*ADAH CLARKE Hanston	RALPH G. DUNMIRE Sterling	*GRETCHEEN ELIZABETH GABRIEL Lawrence
RUTH AILEEN BLOUGH Lawrence	MARY MONSON CLOCK Tulsa, Okla.	ELIZABETH KATIE DUNN Lawrence	WILLIAM SCOTT GARDNER Topeka
LUCILE HARRIS BLUFORD Kansas City, Mo.	*DEAN EDWARD COCHRAN Pratt	JOHN FOWLER EBERHARDT Salina	*EARL NORBERT GARRETT, JR. Olathe
SOL ARTHUR BOBBS Kansas City, Mo.	KATHERYN VIRGINIA COLLIER Carthage, Mo.	*FRANCES ALDINE ELLIOTT Wilmore	*LOUIS HOWARD GERTEIS Wichita
HELEN MARGARET BOLTON Lawrence	KATHRYN COLWELL Glacio	HAROLD HARAY ELLIS Fredonia	HUNTER BOYD GILKESON, JR. Wichita
VERNON LOWELL BOLTON Lawrence	HELEN LORETTA CORNELIUS Hohorington	BENJAMIN TAYLOR EMBRY Kansas City	GEORGE E. GILMORE Independence
MEDORA IRENE BOND Rossville	MARY ESTHER CORNELIUS Hohorington	ELIZABETH ENGEL Mankato	MARJORIE ANNE GILMORE Colorado Springs, Colo.
EVA MARKS BORNSTEIN Kansas City, Mo.	CARROLL OLIVER COURTER Downs	ELEANOR MAXINE ENGLISH Wathens	*SISTER M. DE C. GLEASON Leavenworth
CAL HERRANK BOWEN Independence	*OWEN DE VOL COX Baxter Springs	OTTO A. EPP Hillsboro	CLARENCE FRANK GLENN Maple Hill
*SPENCER HARWOOD BOYD Topeka	*CLARENCE C. CRAIG Lawrence	MARJORY SMITH ERICSON Lawrence	MARGUERITE S. GOFF Lawrence
BENNIE CROUCH BOZEMAN Lawrence	WILLARD PRATHER CROPP Lawrence	HELEN HENRIETTA ERNI Elliswood	*BETTY TOFFLER GOLDMAN Leavenworth
*MARY AMELIA BRECHENSEN Eudora	TRUYA DARLING CROY Kansas City, Mo.	FRANCES MARLAN EVERHART La Junta, Colo.	*DELMAR TAYLOR GOODE Independence, Mo.

*Assigned to the class of 1911

*Assigned to the class of 1927

FRANCES MARIE GORDON Leavenworth	STANLEY G. HUMPHREY Ekridge	ELDEN LaMAR Lawrence	† JAVIS MARJORIE METCALFE El Paso, Texas
ELEONORE GOTTLIEB Pleasonton	* STEPHEN NORRIS HUNTER Lawrence	LOVE JOY LASHIER Lawrence	* KENNETH GRAHAM MEUSER Paola
MILBRED GENEVA GRATERHOLZ Kansas City, Mo.	GEORGE ARTHUR HURD Abilene	* LOUISE HAMILTON LAWRENCE Emporia	* O. KENNETH MINKIFF El Dorado
*RALPH E. GRAVES Lawrence	VERA LEE INGRAM Independence	HELEN H. LAWSON Lawrence	HARRY GEORGE MILLER Kansas City
*JEANNETTE JEFFREY GREYER Leavenworth	ALICE MAE INGRAM Kansas City, Mo.	MARGARET F. LAWSON Lawrence	* HERBERT L. MILLER Eureka
LELA M. HACKNEY Wellington	* ROBERT NELSON IVES Topeka	CHESTER EMORY LEE Council Grove	MAURINE MILLER Sycamore
RAYMOND E. HAGGART Salina	* HANNIBAL E. JACKSON Lawrence	FLOYD McDOWELL LEE Hays	‡ OLIVER DEW MILLER Maple Hill
WILLIAM RAYMOND HAGMAN Pittsburg	MARGARET JACKSON Newton	MARTIN LEICHTER Kansas City	PAUL WOODS MILLER Paico
HAZEL HALSEY Independence	* CHANDLER FRANK JARVIS Winfield	* RUTH ALICE LIMBIRD Archway	‡ HORACE WILLIAM MILLINGTON Gardner
DOROTHY HAMLIN Kansas City	* JOHN EDMUND JARVIS Winfield	DOROTHY ELLEN LINSGOTT Independence	GLADYS LEONE MINICK Kansas City, Mo.
† HAROLD H. HARDING Kansas City	ELIZABETH JEFFREY Topeka	MYRA LITTLE Kansas City, Mo.	PAUL LAWRENCE MOBLEY Kansas City
HORTENSE MARIE HARRISON Leavenworth	NEWMAN JEFFREY Lawrence	MARY A. LIVINGSTON Chanute	HILDA RUTH L. MOLINE Courtland
DOROTHY MARGARET HARVEY Kansas City, Mo.	YVETTE JOSEPHINE JENKINS Kansas City	* LIDA PAULINE LONGENECKER Kansas City	* MARY ELIZABETH MOODY Kansas City, Mo.
*RALPH EVERETT HASKELL Lawrence	DOROTHY MARGARET JOHNSON Kansas City, Mo.	WILLIAM G. LOW Bosron	KATHERINE MAY MORRIS Kansas City, Mo.
GEORGE EDWARD HATTON Bunkerhill	KENNETH CLIFFORD JOHNSON Oklahoma City, Okla.	GERALDINE WARNER LUTES Kansas City, Mo.	* KEITH E. MORRISON Honington
§ GRACE VIVIAN HAWORTH Leavenworth	MARVIN EMIL JOHNSON McPherson	† STEWARD MILTON LYMAN Columbus	MAURICE BARTLETT MURPHY Cherryvale
KENNETH W. HAWORTH Wichita	‡ ELONORA RANDOLPH JOHNSON Kansas City, Mo.	THOMAS JAMES MACKIE Lawrence	MARK JORIE BARCIE MUMICK Springfield, Mo.
ROBERT BURNS EDGAR HAYMAN St. Louis, Mo.	MARGARET E. JOHNSON Lawrence	MARION MAGAQUER Lawrence	* RAMONA GEORGIA NEILL Emporia
‡ THELMA FRANCIS HAYTER Lawrence	* CHESTER C. JONES Lawrence	* ELSIE ROBERT MARDIS Preston	MARION BLANCHIE NELSON Hutchinson
VIDA ELIZABETH HAYWARD Ocala	RICHARD M. JONES Lawrence	CHRISTINE MARSH Carlsberg, Mo.	RAYMOND E. NELSON Baldwin
ARVIN HEICHEN Salina	RICHARD SUTTON JONES Lawrence	BETTY JANE MARTIN Kansas City, Mo.	DAVID W. NEWCOMER, III Kansas City, Mo.
BETTY E. HENNINGER Jewell	LESTER KAMPMEIER Kansas City	ELLA ROBERTA MARTIN Gordon P. Martin	MIRIAM EVANELL NIXON Eureka
JOSEPHINE HENRY Highland	FAYE E. KARNES Lawrence	GORDON P. MARTIN Wichita	GEORGE LOREN NORRIS Olathe
IMCIGENE ELIZABETH HILL Ottawa	PHILIP RAY KEELER Scottsville	HERMAN MAST Goff	* MORTON JEROME NYDA Kansas City
*RALPH EUGENE A. HINES Leavenworth	RAYMOND M. KELL Topeka	MAXINE FRANCES MATHEWS St. Joseph, Mo.	DONALD JENNINGS OREE Kansas City
RALPH EDGAR HINKEL Atchison	DELOLA BELLE KELLOGG Lawrence	* DEAN EMERSON MATTHEWS Haviland	ELEANORE MILES ORELL Topeka
MURRAY HARTSHORN HODGES Olathe	LOREN WILSON KENNEDY Parsons	JOSEPHINE LUCILLE MAXWELL Lawrence	THEODORE MORGAN O'LEARY Lawrence
MARY MITCHELL HOERNIG Kansas City, Mo.	BARBARA KESTER Lawrence	ELEANOR PEARSON MATHEWATY Lawrence	* MARY ELIZABETH O'NEIL Prescott
MILDRED ADELINE HOFFMAN Lawrence	ELRA RICHARD KEY Lawrence	CLARA A. MCCONKEY Quinter	RUTH ORCUTT Lawrence
CHARLES WILLIAM HOOVER Olathe	* RAYMOND KILPATRICK Lawrence	* FRANK R. McFARLAND Lawrence	THEYRA PAULINE ORR Kingman
*MARGARET MARTHA HOPKINS Kansas City, Mo.	PAULINE ROBERTA KIRK Topeka	LESTER WELBUR McMANIS Kansas City	UNA O. ORR Kansas City
ETHEL MABEL HORNBUCKLE Paola	* SENNETT-KIRK, JA. Garnett	‡ ALICE CATHERINE McTAGGART Baldwin	* ROBERT BAUCE OSBORN, JR. Wakeney
*MARY HOUSE Arlington City, Mo.	ROXANA LOUISE KIRKHAM Lawton, Okla.	MARTHA B. MEADE Lawrence	MARY MARGUERITE OVERLEY Merriam
VIRGINIA LOUISE HUDSON Tulsa, Okla.	JOSEPH VAL KNACK Wyandotte, Mich.	KATHERINE W. MEEK Kansas City	VIRGIL WAYNE PADEN El Dorado
MARGARET H. HUGGINS Emporia	MARY KREAMER Beloit	* MARY JANE MELTON Lawrence	FLORENCE VERA PAIGE Troy

* Assigned to the class of 1931

‡ Assigned to the class of 1930

‡ Assigned to the class of 1929

§ Assigned to the class of 1926

- *EDWIN FRANK PARKER
Topeka
- *JOSEPH OYVILLE PARKER
Pruitt
- IDA PARBOTT
Kansas City, Mo.
- †FRANK PENCE
Kansas City, Mo.
- *GEORGE F. PERRY
Wichita
- WILLIAM WILSON PHELPS, JR.
Roswell, N. M.
- HELEN ROBERTA PIEDER
Holtington
- *GERALD EDGAR PIPES
Lawrence
- ‡THOMAS H. POPPLEWELL, JR.
Lawrence
- JANE BALLEW PRICE
Atchison
- *LUCENA QUANTUS
McPherson
- *DOROTHY RAISBACK
Kansas City
- MARY MARGARET RAMSEY
El Dorado
- MORGAN J. RABEK
Lawrence
- *REUBEN J. RATH
St. Francis
- ROBERT BRYHEN REED
Eureka
- NELLIE CECILIA REZAC
Emmett
- DOROTHY JANE RIDGWAY
Dorset, Colo.
- MARGARET GENEVIEVE RIES
Kansas City, Mo.
- MARGARET RILEY
Paola
- SARAH VIRGINIA RITCHIE
Wichita
- GWENDOLEN ROSE
Kansas City
- DOROTHY ANN ROSENTHAL
Kansas City, Mo.
- *CLARA D. ROYVAL
Lawrence
- JANE BERNICE ROTH
Russell
- *FOSTER W. RUNDLE
Clay Center
- NED MILLER RUSSELL
Lawrence
- *ROBERT EDWARD RUSSELL
Great Bend
- LESLIE ABRAHAM RUTLEDGE
Dunlap
- *KERMIT JEWELL RYAN
Bonnie Springs
- *HERRERT WOHLFORD SANDELL
Kansas City
- MILTON WILLIAM SANDERSON
Lawrence
- HORACE ALVIN SANTRY
Ellsworth
- J. THOMAS SCHNEBERY
Topeka
- ANNA MARIE SELLARS
Independence
- ROBERT INGE SEWELL
Independence
- LEO W. SHANNON
Lawrence
- CHESTER DOUGLAS SHARP
Kansas City, Mo.
- HAZEL WELLS SHARP
Kenneth
- *THEODORE K. SHARP
Lawrence
- WILLARD CHARLES SHELTON
Kansas City
- BURZILLUS HOWARD SHIELDS
Baxter
- *JEANNE SHOEMAKER
Centralia
- CLAUDE EVELYN SHORT
Briggsville, Ark.
- *GLEN G. SIMMONDS
Lawrence
- DOROTHY ANNE SIMONS
Lawrence
- †FRANKLIN HENRY SKAGGS
Hazelton
- *ELDIS RAYMOND SLOAN
Holton
- HAZEL D. SLOCUM
Herndon
- ANNA LOUISE SLOO
Topeka
- DONALD EUGENE SMITH
Julesburg, Colo.
- *IRENE AINSWORTH SMITH
Chapman
- MARGUERITE E. SMITH
Lawrence
- W. BLAIR SMITH
Kansas City, Mo.
- *WILBURN WILSON SMITH
Kansas City
- EVELYN SNIDER
Courtland
- BERNICE CLARE SNYDER
Hutchinson
- CHARLES EDWIN SNYDER, JR.
Leavenworth
- ETHELLEN KATHRYN SOPER
Hutchinson
- *CLARK STANLEY SPALSBURY
Lawrence
- MELBA HELEN SPRINGER
Lawrence
- LORENIE SQUIRE
Hesper
- JANE ELIZABETH ST. CLAIR
Kansas City, Mo.
- CLARK CONKLING STEPHENSON
Augusta
- *MARCELLA E. STERLING
Lawrence
- GERALD C. STOVER
Winona
- PAUL DUDLEY STRAHM
Lawrence
- *ROBERT K. STRANATHAN
Lawrence
- VIRGINIA D. STRANDBERG
Kansas City, Mo.
- *ROBERT EARL STURGEON
Lyons
- MARGARET HILDRETH STURGES
Independence, Mo.
- WILLIAM SULLIVAN, JR.
Kansas City
- PEARL LORENA SWINSON
Pruitt
- ROBERT Y. TALIAPERO, JR.
El Dorado
- HAZELLE DEILLAH TAYLOR
Lecompton
- SIXTY M. TELLEMANN
Leavenworth
- LLOYD THOMPSON
Harveyville
- MATELL FINCH TODD
Lawrence
- †STANLEY E. TOLAND
Wichita
- PAUL TOMMEL, JR.
Nredesh
- *SISTER MARY C. TOWLE
Leavenworth
- *OTIS H. TRAU
Pruitt
- MONA MARGUERITE TUCKER
Atchison
- WALTER A. VAYEL, JR.
Fort Scott
- *GLENN DECK VORAN
Pruitt Prairie
- *ORRY CARVIN WALZ
Dorchester
- JOHN WHELEY WARD
Iola
- *LAVENE MERL WARD
Lebanon
- LOUISE AYS WATTERSON
Belle Plaine
- MARY LOU WEBB
Kansas City, Mo.
- *EDGAR TEL WELLS
Bunker Hill
- ROSEMARY JO WENTWORTH
Wichita
- MARTHA ELIZABETH WEST
Elkridge
- *MELBOURNE G. WESTMORELAND
Lawrence
- JEANNETTE GRACE WHITE
Lawrence
- *WALTER WILLIAMS WHITLA
Coar d'Alene, Idaho
- *EDMUND BOLTWOOD WILLIAMS
Ottawa
- JOHN ARTHUR WILLIAMS
Lawrence
- LEWIN BARACK WILSON
Kansas City
- HOWARD EDGAR WINGERT
Hope
- ROBERT C. WINSLOW
Kansas City
- FREDERICK EDWARD WIRTH
Bremese
- RALPH S. WOLRACH
St. Francis
- RICHARD E. WOODMANSEE
Kansas City, Mo.
- *BELLA HOBSON WORKMAN
Fort Scott
- CLINTON JONES T. YOUNG
Lawrence
- *JOHN OTIS YOUNG, JR.
Wichita
- KATHERINE MARGARET YOUNG
Kansas City, Mo.
- *ROBERT GRIEBA YOUNG
Lawrence
- LILLIAN ZIMMERMAN
Kansas City, Mo. 366

Bachelor of Science (College)

- *SERCY JAY BAILEY
Oklahoma City, Okla.
- ROBERT S. BEYMAN
Lawrence
- DONALD SHEFFIELD FERGUSON
Atchison
- GLENN A. HOLLINGSWORTH
Lawrence
- MARCELINO TIZON SURLA
Angeles, Pampanga, P.I. 5

*Assigned to the class of 1931

‡Assigned to the class of 1930

†Assigned to the class of 1929

Bachelor of Science in Medicine

HENRY HERRINGTON ASHER Lawrence	HAROLD V. FORD Kansas City	ROBERT HAYDN MAXWELL Wichita	CHARLES ABRAHAM ROYER Coffeyville
EDWARD BRUCE BADGER Carbondale	CLARENCE LEROY FRANCISCO Kansas City	*RALPH ROBERT MELTON Lawrence	†ARTHUR B. R. SMITH Kansas City
WILLIAM BROWNE Carbondale	ROBERT CLARENCE FREDEIN Ottawa	ERNEST M. MOORE Lawrence	ROBERT PHILIP SMITH Junction City
EMERY C. BRYAN Scintons	ELYOT N. FREEMAN Ablene	ERNEST C. MOSER Powhattan	FREDERIC AIKEN SPEER Kansas City
VICTOR BULLER Pretty Prairie	LELAND FOREST GLASER Ozawie	*OMAR U. NEEB, JR. Oskhill	HAROLD FERDINAND SPENCER Yates Center
*HAROLD OLIVER BULLOCK Independence	HOWARD EUGENE HAMILTON Kansas City	*ORVAL T. NEEBELS Wichita	ETHEL WATSON Independence, Mo.
*JOHN CLIFFORD CLARK Troy	CHARLES LABELL, JR. Kansas City	KARL HAMILTON PFUETZE Manchester	*R. M. WYATT Hill City
QUINTON DIETER CONKLIN Ablene	*ROBERT CHARLES JEFFRIES Kansas City, Mo.	*LAWRENCE A. PROCTOR Parsons	*FRANCIS EVANS WYNNE Osage City
KENNETH EVANS COX Kansas City, Mo.	LIDA PAULINE LONGENECKER Kansas City	*GEORGE GAYLORD ROBINSON Gardner	CHESTER LEE YOUNG Kansas City

36

Bachelor of Science in Nursing

IYA JEAN CAUBLE Benedict	FLORENCE ROSELE PARISA Topeka	2-409
-----------------------------	----------------------------------	-------

SCHOOL OF ENGINEERING AND ARCHITECTURE

Presented by GEORGE C. SHAAD, *Dean*

Bachelor of Science in Architecture

*JOHN G. BARNES, JR. Leavenworth	REGORIO TELA TABASAN Santo Domingo, P.I.	OLGA M. WALLACE Yates Center	ARNO G. ZIEGENS Eudora	4
-------------------------------------	---	---------------------------------	---------------------------	---

Bachelor of Science in Chemical Engineering

DELBERT STANLEY BEACH Neodesha	MILFORD A. JOHNSON St. Francis	ANTONE FRANCIS REZINICK Lost Springs	RALPH IRVIN SMITH Dillon, Mont.
TANDY REINHOLD COLEMAN Kansas City, Mo.	ARTHUR FREDERICK McCLURE Leavenworth	*GREGORY GEORGE RICK Kansas City, Mo.	GENE LEWIS TANDY Independence, Mo.
SAMMY DICHAIRO Atma	J. GLENN MITCHELL Joplin, Mo.	ROBERT PHILLIPS SHAW, JR. Kansas City, Mo.	WILLARD RENWICK YOUNG Esbridge
	LEONARD U. PROSSER Kansas City, Mo.		13

Bachelor of Science in Civil Engineering

GEORGE MITCHELL BECHTEL Liberty	EDWIN DONALD CHAPIN Lawrence	*JOHN C. EAST Merriam	ALLISON DWIGHT HILL Topeka
WILBUR CHARLES BLACK Kincaid	JAYING LEE COFFMAN Kansas City, Mo.	FLOYD EDWARD GHINSKY Kansas City, Mo.	MAURICE BURTON KITE Kansas City, Mo.
		*RICHARD THOMPSON HARVEY Kansas City, Mo.	ROY L. McDONALD, JR. Lawrence

*Assigned to the class of 1931 †Assigned to the class of 1930

MILFORD E. ROGERS
Topeka
ROBERT DAY SCOTT
Winfield

*ROBERT JOHN SHULTZ
Lawrence
GEORGE ROBERT SMITH
Lawrence

DARL LOWELL TRUERLOOD
Lawrence
GLENN ARTHUR SUTTON
Longton

CLAIR LAWRENCE WOOD
Liberal
FARRIS SCHMIDLER YOUNG
Kansas City, Mo. 18

Bachelor of Science in Electrical Engineering

BERT READ BUTZ, JR.
Chippian
MAX RANDALL BRAUNINGER
Kansas City, Mo.
*CHARLES MERLIN BRECHEFEN
Eudora
JACK CAILEY BROUS
Lawrence
RAYMOND L. CROW
Lawrence
*CARL V. ERICKSON
Cheburne

LOUIS MILTON FARRER
Kansas City, Mo.
EDWARD WILLIAM FISHER
Topeka
CLIFFORD OWEN HAMILL
Lawrence
*RALPH LOUIS HENDERSON
Cheyenne Agency, S. D.
WILLIAM OSMUN KYTE
Kansas City, Mo.
HAROLD K. LANNING
Topeka

ROBERT EARL MACDOWELL
Kansas City, Mo.
CHARLES LAVERNE OMER
Manhasset
FORREST WESLEY PACKWOOD
Kansas City
‡WAYNE MILLER POWELL
Ottawa
LEROY EDWARD SHARD
Topeka
*FRANCIS LEROY SHIMER
Kansas City, Mo.

GEORGE EBERT SIMON
Wells
JAMES DONALD SWAFFORD
Lawson, Mo.
JOHN KENDRICK TURNER
Kansas City
GLEN WAKELY
Maitland, Mo.
WILLIAM EVERT WELCH
Lawrence
WAYNE LORRAIN WOOD
Topeka 24

Bachelor of Science in Industrial Engineering

CATALINO BORGONIA
Baltimore, Cag. P. I.

WILLIAM REESE EVANS
Kansas City, Mo.
LEWIS WILLIAM EAST
Kansas City, Mo.

EDMUND WILSON HOLLANDS
Lawrence
VIRGIL HENRY POLLOCK
Chanute

GLENN WILLARD STANCLIFF
Lawrence 6

Bachelor of Science in Mechanical Engineering

LAUREANO A. ASPERIN
Agoo, La Union, P. I.
NEDWIN GERHARD BERGER
Lawrence
WILDER M. CONLEY
Leavenworth
MELVIN LEROY DICK
Coffeyville

¶LEO CHARLES DODD
Lawrence
DAVID LEROY DUTTON
Burlingame
KENNETH DWIGHT FORNEY
Lawrence
GEORGE T. FRASER
Topeka

ROBERT FRANK GLORE
Kansas City
RAYMOND P. HAIN
Kansas City, Mo.
J. HARLAN HAWKINS
Florence, Colo.
HENRY JOSEPH HOOD
Lawrence

WARREN HUNTER JONES
Topeka
JOHN S. ROEHR
Topeka
ROBERT DICKY SPENCER
Kansas City, Mo. 15

Bachelor of Science in Mining Engineering

MELVERN BEAR
Harper

JOE F. KLANER, JR.
Pittsburg
FRANK NELSON LISCOM
Lawrence

FRANCIS EDWIN METTNER
Lawrence
HENRY LEWIS ROSS
Lawrence

*LAWRENCE JOHN SKINNER
Lawrence 6

Bachelor of Science, 5 year

LAUREANO A. ASPERIN
Agoo, La Union, P. I.

PAUL CLARENCE BEARDSLEE
Lawrence
JOHN WILLIAM ELDER
Kansas City, Mo.

MAURICE BURTON KITE
Kansas City, Mo.
LELAND WESLEY SIXT
Lawrence

GENE LEWIS TANDY
Independence, Mo. 6-92

*Assigned to the class of 1931

‡Assigned to the class of 1930

¶Assigned to the class of 1929

SCHOOL OF FINE ARTS
Presented by DONALD M. SWARTHOUT, *Dean*

Bachelor of Music Education

MAURINE BRUNER Lawrence	EVELYN GRIZZELL Cliffto	IRENE ANNA OLIVER Kansas City, Mo.	REBA LEE STANSBERRY Jasper, Mo.
MARGARET BUSHONG Lawrence	JANE K. LIVINGSTON Chanute	GERALDINE V. PRITCHETT Kansas City, Mo.	LAUREN J. SWEDLUND Macksville
GERTRUDE VIRGINIA CASTO Wichville	LOUISE BEATRICE LUMB Wakarusa	DOROTHY LEE REIFARS Kansas City, Mo.	RUTH LOUISE THOMPSON Ottawa
†JUDANITA FLORENCE DEVEAU Leavenworth	LAURA LOU MILLER Lawrence	ETHEL E. RUPPENHAL Dorrance	LIDA PICKETT WARRICK Kansas City, Mo.
EULALIA EVELYN GERBER St. Joseph, Mo.	ELEANOR MITCHELL Coffeyville	†ELIZABETH IONE SHAW Holton	BEULAH LURETTA WOODRUFF Clyde 22
	DOROTHY MOORE Arkansas City	ELDERE VIVIAN SHAW Belleville	

Bachelor of Music

MARtha MAE BAUGH Garden City	CAROLINE ROB HOUSE Lawrence	ROBERT WILLIAM MILTON Kansas City, Mo.	RUTH VIRGINIA SPINDLER Garnett
LILWELLYN SYDNEY DAVID Bonner Springs	WILLIAM M. HOWIE Lawrence	DOROTHY MOORE Arkansas City	HELEN JANE STOCKWELL Lawrence
GAVIN LLOYD DOUGHITY St. Joseph, Mo.	KATHERINE MARY KAULL Lawrence	DOROTHY MAY PIERCE Ponoma	EVELYN GLADYS SWARTHOUT Lawrence
CHRISTINE M. FINK Fredonia	ENTWISHEE WHITCRAFT KNOX St. Joseph, Mo.	GUY CARR SIMPSON Lawrence	FAIRY VORAN Pretty Prairie
E. LUCILE GABEL Larded	KATHLEEN V. McMORRAN Mackville	AGNES VIRGINIA SMITH Topeka	GERTRUDE LAURA WILLIAMSON Waverly 21
SISTER MARY FELIX HEBERT Leavenworth			

Bachelor of Fine Arts

SISTER MARY G. BUCKLEY Leavenworth	BRENDA GROESBECK Kansas City, Mo.	JULIA ANNETTE KEELER Deerfield	JESSIE LENORE PECK Jewell
HELEN LOUISE COULSON Ablene	HAZELLE HARRIETTE HEDGES Kansas City, Mo.	RACHEL HUTT LANTZ Salina	NICKLEE CHARLES SCHELBAR Lawrence
*FRANCES CROSSAN Rockford, Ill.	CHARLINE VEE HILL Horton	*CATHERINE LARDNER Lawrence	LOURNAINE STARR Leake
EMMA BOYCE CROW Lawrence	HAROLD LEROY JOHNSON Tonganoxie	GEORGE JAMES McPHILLAMEY Kansas City, Mo.	VALERIE K. SWENSON Lawrence 16

Three-year Certificate in Piano

CHRISTINE MARINER FINK
Fredonia 1-60

SCHOOL OF PHARMACY
Presented by L. D. HAVENHILL, *Dean*

Bachelor of Science

HARRY P. M. BROWNE Kings City	HENRY A. KIEFFER Jewell	WILLIAM ELBERT SMITH Lawrence	HARRY WILLIAM WINKLER Ganey 7
ROBERT MELVIN DAUGHERTY Sytschum	JAMES RUSSELL OTTINGER Oskslooga	MAURICE GLEN SMOLT Newton	

Pharmaceutical Chemist

GEORGE W. DOCKHORN Chapman	HELEN ALICE LARSON Barnon, Mo.	MARLEY G. ROWE Wichita	ARTHUR THEODORE STEIN Belleville 7-14
LEONARD C. KERN Palco	JERRY HENDERSON RHODES, JR. Lawrence	ELMER SCHEUERMANN Ota	

* Assigned to the class of 1931 † Assigned to the class of 1930 ‡ Assigned to the class of 1929

THE RESERVE OFFICERS' TRAINING CORPS

Presented by MAJOR W. C. KOENIG, PMS&T

Commission, Officers' Reserve Corps

CRESTON H. ALEXANDER, Engineer Reserve
Burlington, Okla.

ARNOLD T. ASHTON, Engineer Reserve
Williamsburg

JOHN F. AUSTIN, Coast Artillery Reserve
Lawrence

GORDON C. BLACKMAN, Coast Artillery Reserve
Leavenworth

OAKLE P. BULLOCK, Engineer Reserve
Kansas City, Mo.

*GEORGE E. DENNING, Coast Artillery Reserve
Elkhart

DAVID L. DUTTON, Coast Artillery Reserve
Burlingame

MILTON J. FARRELL, Coast Artillery Reserve
Hays

JOHN K. FREL, Coast Artillery Reserve
Kansas City, Mo.

CLARENCE B. GREGG, Coast Artillery Reserve
Lawrence

GEORGE R. GAMES, Coast Artillery Reserve
Lawrence

RAY E. JOHNSON, Engineer Reserve
Buckner, Mo.

RALEIGH H. MACKLIN, Engineer Reserve
Grealey

JOHN F. MCGAUGHEY, Engineer Reserve
Joplin, Mo.

ERIC L. NYE, Coast Artillery Reserve
Topeka

ALEXIS S. PETERSON, Coast Artillery Reserve
Leavenworth

GEORGE L. POOR, Coast Artillery Reserve
McAlester, Okla.

WILLIAM A. RUMBLE, Coast Artillery Reserve
Lawrence

CLAUDE M. SCOTT, Coast Artillery Reserve
Lawrence

JOHN W. SCOTT, Coast Artillery Reserve
Lawrence

PAUL H. SHOULER, Engineer Reserve
Lawrence

HOWARD S. VAN ORDSTRAND, Infantry Reserve
Wichita

GLEN WARELY, Engineer Reserve
Maitland, Mo.

ERBERT B. YOUNGSTROM, Coast Artillery Reserve
Akron, Iowa

24

Certificate of Eligibility†

FRANK J. ANNEBERG, Coast Artillery Reserve
Leavenworth

LEEBERY GLASS, Engineer Reserve
Kansas City, Mo.

ROBERT A. HOFFMAN, Coast Artillery Reserve
Kansas City, Mo.

CHARLES A. WAGNER, JR., Engineer Reserve
Natchitoches, La.

4-28

* To receive commission after completion of summer R.O.T.C. camp.

† Commissions to be awarded on reaching age of twenty-one years

SCHOOL OF EDUCATION

Presented by RAYMOND A. SCHWEGLER, Dean

Bachelor of Science in Education

IVA McDONALD ARMSTRONG
Cherryvale

‡ EDMUND ARTHUR ASH
Kansas City

MAUDE AYRES
Kansas City, Mo.

ORVAL F. BARNARD
Atchison

EILEEN M. BELL
Kansas City, Mo.

IRENE LOIS BELL
Lawrence

MARGARET THELMA BENFIELD
Weterville

SAMUEL R. BERG
Lawrence

ELLA IRENE BROWN
Lawrence

ELISABETH BRYAN
Lawrence

WILMA G. BUECHNER
Kansas City, Mo.

GWENDOLYN MAE BUTLER
Kansas City, Mo.

JANE WINIFRED BYRN
Lawrence

MARJORIE FAIRIE CARPENTER
Pleasanton

MILDRED VAN COBB
Burlington

* CLEO BELLE DAVIS
Lawrence

DOROTHY JEAN DAVIS
Kansas City, Mo.

VERNON LEROY DOWNS
Kansas City, Mo.

GEORGE EVERETT FIGGS
Lawrence

HARRIET C. FRETZ
Topeka

HELEN VIRGINIA GARRITY
Kansas City

‡ CHARLES H. GLEASON
Newton

MARGARET A. HALSTAD
Kansas City, Mo.

LOLA HOOVER HARRIS
Lawrence

FLORENCE B. HOOPER
Kansas City, Mo.

EVYLYN LOIS HUNT
Liberty, Mo.

CLAIRE EMILY JARVIS
Kansas City

ELLA D. JONES
McLouth

SARA LEE KARR
Hutchinson

NANCY M. KERNS
Kansas City, Mo.

MARION LOUISE KINMAN
Leavenworth

LAURA BROWN LANE
Lawrence

RILLA MARGARET LIEKA
Independence, Mo.

CORDA LEONARD
Harlan

ZILLA M. LOVELY
Kansas City, Mo.

MARY F. LYDICK
St. Joseph, Mo.

LUCILLE FLOYD MCCREATH
Lawrence

RUTH MAY MEYER
Olathe

ELEANOR MONTGOMERY
Skidmore, Mo.

MADGE MORRISON
Kansas City

* Assigned to the class of 1931

‡ Assigned to the class of 1930

ALICE PEARL MARTIN MOXLEY
Wichita
FRANK GILMORE NICHOLS
Overbrook
GRAYCE AGNES PATRICK
Kansas City
CHESTER EARL PELLETT
Fort Scott
MARY BLANKENSHIP PERRY
Huntington, W. Va.

ELEANOR M. RADER
Independence, Mo.
BOYDE ETTA RICH
Lyndon
MARIAN RILEY
Olathe
OTTO PAUL CARL ROST
St. Louis, Mo.
KATHERINE SCHELLENBERG
Hillsboro
MARIAN EVELYN SEARS
Kansas City

J. NELSON SOREM
Jettimore
CORA LEE STANFORD
Greenville, Texas
VERA ALICE STANFORD
Greenville, Texas
*SAMUEL ALBERT THIEL
Independence, Mo.
GEORGE J. TROMBOLD, JR.
Iola
HAZEL MARIE TRUSSELL
Kansas City

FRANCES ELIZABETH TUCKER
Kansas City, Mo.
NELLE WILHELMINA UTZ
St. Joseph, Mo.
CARRIE ELIZABETH WAGONER
Buff Oak
*CLYDICE AZALEA WILEY
Lawrence
PEARL HUBBELL YATES
Kansas City, Mo.

62

University Teacher's Diploma

FRANCES JEAN ARBUCKLE
Stirling
IVA McDONALD ARMSTRONG
Cherryvale
†EDMUND ARTHUR ASH
Kansas City
MAUDE AYRES
Kansas City, Mo.
ORVAL F. BARNARD
Atchison
EILEEN M. BELL
Kansas City, Mo.
IRENE LOIS BELL
Lawrence
MARGARET THELMA BENFIELD
Watersville
SAMUEL R. BERG
Lawrence
ELLA IRENE BROWN
Lawrence
ELIZABETH BRYAN
Lawrence
WILMA G. BUSCHNER
Kansas City, Mo.
VELMA BURLESON
Kansas City
GWENDOLYN MAE BUTLER
Kansas City, Mo.
JANE WINIFRED BYAN
Lawrence
MARGARET FRANCES CALLAHAN
Rooddale
†EARL ELLIOTT CARNEY
Lawrence
MARJORIE FABRIE CARPENTER
Pleasanton
LENORE FRANK CHAMBERS
Kansas City, Mo.
MILDRED VAN COBB
Burlington
KATHERINE VIRGINIA COLLIER
Carthage, Mo.
HELEN LORETTA CORNELIUS
Hobington
WILLELLA CURNUTT
Kansas City, Mo.
*CLYO BELLE DAVIS
Lawrence
DOROTHY JEAN DAVIS
Kansas City, Mo.

DOROTHY LOUISE DAVIS
Leavenworth
HAROLD EDGAR DILLEY
St. Joseph, Mo.
VERNON LE ROY DOWNS
Kansas City, Mo.
ELIZABETH KATIE DUNN
Lawrence
FRANCO M. EVERHART
La Junta, Colo.
GEORGE EVERETT FOGG
Lawrence
PAUL CLARENCE FOSTER
Lawrence
HARRIET C. FRITZ
Topeka
HELEN VIRGINIA GARBITT
Kansas City
†CHARLES H. GLEASON
Newton
FRANCES MARIE GORDON
Leavenworth
HAZEL HALSEY
Independence
MARGARET A. HALSTEAD
Kansas City, Mo.
LOLA HOOVER HARRIS
Lawrence
HORTENSE MARIE HARRISON
Leavenworth
DOROTHY MARGARET HARVEY
Kansas City, Mo.
*ELEANOR HENDERSON
Evan, Ohio
RALPH EDGAR HINKEL
Atchison
FLORENCE B. HOOPER
Kansas City, Mo.
ETHEL MARIE HORNBUCKLE
Paola
EVELYN LOIS HUNT
Liberty, Mo.
ALICE MARY INMAN
Kansas City, Mo.
CLAIRE EMILY JARVIS
Kansas City
ELLA D. JONES
McLoud
SARA LEE KARR
Hutchinson
LOREN WILSON KENNEDY
Paris

NANCY M. KEENS
Kansas City, Mo.
ELRA RICHARD KEY
Lawrence
MARION LOUISE KENMAN
Leavenworth
LAURA BROWN LANE
Lawrence
LOVE JOY LASSER
Lawrence
RILLA MARGARET LEEKA
Hurlar
CORA LEONARD
Kansas City, Mo.
MARY F. LUDICK
St. Joseph, Mo.
MARINE FRANCES MATHEWS
St. Joseph, Mo.
JOSEPHINE LUCILLE MAXWELL
Lawrence
LUCILLE FLOYD MCCREATH
Lawrence
RUTH MARY MEYER
Olathe
*O. KENNETH MIDKIFF
El Dorado
ELEANOR MONTGOMERY
Skidmore, Mo.
MADGE MORRISON
Kansas City
ALICE PEARL MARTIN MOXLEY
Wichita
MARJORIE B. MUSICK
Springfield, Mo.
MARION BLANCHIE NELSON
Hutchinson
FRANK GILMORE NICHOLS
Overbrook
MIRIAM EVANELL NIXON
Eureka
THRIVY PAULINE ORR
Kingman
MARY MARQUERITE OVERLEY
Merriam
IDA PARKETT
Kansas City, Mo.
GRAYCE AGNES PATRICK
Kansas City
CHESTER EARL PELLETT
Fort Scott

MARY BLANKENSHIP PERRY
Huntington, W. Va.
ELEANOR M. RADER
Independence, Mo.
BOYDE ETTA RICH
Lyndon
MARIAN RILEY
Olathe
SARAH VIRGINIA RITCHIE
Wichita
OTTO PAUL CARL ROST
St. Louis, Mo.
KATHERINE SCHELLENBERG
Hillsboro
MARIAN EVELYN SEARS
Kansas City
ANNA MARIE SELLARS
Independence
HAZEL D. SLOCUM
Hudson
EVELYN SNIDER
Courtland
BERNICE CLARE SNYDER
Hutchinson
J. NELSON SOREM
Jettimore
CORA LEE STANFORD
Greenville, Texas
VERA ALICE STANFORD
Greenville, Texas
*SAMUEL ALBERT THIEL
Independence, Mo.
GEORGE J. TROMBOLD, JR.
Iola
HAZEL MARIE TRUSSELL
Kansas City
FRANCES ELIZABETH TUCKER
Kansas City, Mo.
NELLE WILHELMINA UTZ
St. Joseph, Mo.
CARRIE ELIZABETH WAGONER
Buff Oak
MARY LOU WEBB
Kansas City, Mo.
*CLYDICE AZALEA WILEY
Lawrence
HOWARD EDGAR WINGERT
Hope
PEARL HUBBELL YATES
Kansas City, Mo. 102-164

*Assigned to the class of 1931

‡Assigned to the class of 1930

SCHOOL OF BUSINESS

Presented by FRANK T. STOCKTON, *Dean*

Bachelor of Science in Business

ALVIN FAIRFAX BARNES Oswego	GEORGE W. FUNDIS Lawrence	GORDEN A. MARK Abilene	*ELLSWORTH W. SCHIDENI Kensington
CARL D. BELY Coffeyville	ELMER WENTWORTH GIFY Lawrence	JAY DEAN MCCLINTICK Abilene	DONALD ALBERT SELTSAM Spearsville
*LEE PRICE BENTON Kansas City, Mo.	GRACE TREMAINE GLANVILLE Kansas City	JOHN FRENCH MCGAUGHEY Joplin, Mo.	PAUL HENRY SHULER Lawrence
DONALD C. BOLLARD, JR. Kansas City, Mo.	RICHARD L. HARRINGTON Independence, Mo.	ADDISON HAROLD MESCHKE Hutchinson	HASKELL SHWARTZ Kansas City, Mo.
MARY ELEANOR BOTESFORD Kansas City, Mo.	*RICHARD ALLEN HICKLEY Wichita	EMERLE W. MORGAN, JR. Coffeyville	RALPH W. SICKEL Leavenworth
ALPHA GEORGE CARTER, JR. Kansas City, Mo.	BESSIE DOROTHEA HIGGINS Kansas City, Mo.	*ARNOLD AUGUST MUELLER Haven	STANLEY R. SIMON Kansas City
DEAN C. CHAFFEE Tulbridge	ROBERT ANDREW HOFFMAN Kansas City, Mo.	*JOHN M. NEELY Emporia	MORRIS ANDREW SMITH Huron
PAUL CLEMENT CLOCK Lawrence	ROSTINE DEBRAY HOGUE Almena	IRENE JOSEPHINE NELSON Bridgeport	*ORVAL E. SPARKS Lawrence
GLADYS LUCILLE COE Topeka	FRANK L. HOLMES Independence, Mo.	JACK RALPH NICHOLSON Ellis	FELIX THEODORE SYCHICHEN Tipton
GERALD A. COOLEY Goff	†WENDELL SCOTT HOLMES Lawrence	FRED G. NORDSTROM Ottawa	JOSEPH STEMPLEMAN Kansas City
DWIGHT A. DICERSON Lyons	SUSAN HUDSON Chanute	EDWARD L. OBELL Kansas City, Mo.	H. RICHARD STYLWELL Emporia
*MERTON H. DILLS, JR. Kansas City, Mo.	A. GEORGE HULTERN Lawrence	WILFORD G. PARSONS Leavenworth	HELEN ELIZABETH TOMLINSON Topeka
ROBERT N. DILLS Mankagere, Okla.	PAUL WEBER JACOBS Atchison	ERNEST CHARLES PICK, JR. Kansas City, Mo.	WALTER S. TROMBOLD Iola
ELISE ELEANOR ENGLUND Kansas City, Mo.	WALTER S. JANSEN Newton	GEORGE L. POOR Iola	ERNEST H. VAUGHN Emporia
NUVA I. EWING Goff	MYRON REECE KENNEDY Lawrence	CARL ALBERT POSTLETHWAITE Mankato	OLIVER RODGER VIGNERY Concordia
*H. BERNARD FINK Topeka	†EDWIN ARTHUR KOCH Kansas City	RICHMOND JAMES RICHARDS Fort Scott	*ELWOOD ADDISON WALKER Rogers, Ark.
BOYD MILTON FISHER St. John	FRANK LESLIE LANE Baldwin	ROBERT CLEMENT ROSS Lawrence	CHARLES DORIS WARREN Lawrence
VENNON WALLACE FLAMING Hillsboro	CHARLES R. LARKIN Hutchinson	CHARLES OSZWIN RUTLEDGE Topeka	FRANCIS S. WOOD Kansas City
	FRED LOUIS, JR. Harlan, Iowa	JOHN N. RYAN, JR. Wichita	

SCHOOL OF LAW

Presented by ROBERT MCNAIR DAVIS, *Dean*

Bachelor of Laws

PAUL W. APPLAGATE Salina	FLORENCE MARTHA DOOLEY Kansas City, Mo.	IVAN IRWIN Dallas, Texas
ORVAL FRANCIS BALDWIN, A.B. 1929 Lecompton	JOHN HUBERT ELSA, A.B. 1929 Osborne	FOREST ARTHUR JACKSON, A.B. 1930 Lawrence
ALDEN BESSE Pittsburg	GERALD FITZ-GERALD, A.B. 1927, University of Oklahoma	KENNETH MORTON JORDAN Kansas City, Mo.
KENNETH K. BRANSON, A.B. 1931 Lawrence	Tulsa, Okla.	JOHN HAROLD JORGENSEN Moutie Hope
*CHARLES W. BRENNEMEN, JR. Kansas City	CARL JOHN GARANSON, A.B. 1930 Manhattan	ROBERT G. KARR, A.B. 1923, Park College Girard
ANTONIO MILNER BUZZI, A.B. 1931 Wichita	MERLE ADELBERT GETMAN Kansas City, Mo.	MORRIS HASSELL KAUFMAN Atchison
HERBERT DIETS, A.B. 1931 Russell	CHARLES ESTEL HAMMETT Lawrence	JOSEPH KOBALCHIK Rosedale
	CHARLES WILLIAM HOOVER, A.B. 1932 Olathe	

*Assigned to the class of 1931 †Assigned to the class of 1929 ‡Assigned to the class of 1928

STEWART MILTON LYMAN, A.B. 1932
Columbus
DWIGHT ALEXANDER OLDS, A.B. 1930
Florence
CHARLES WAYNE PHELPS
Pittsburg
LOURIN W. ROSENKRANTZ
Washington

JULIAN ESTILL SMITH
Lawrence
JOHN HARVEY SULLIVAN
Trenton, Mo.
STANLEY E. TOLAND, A.B. 1932
Wichita
WILLIAM LEE VAUGHAN, JR.
Kansas City

ELIJAH WASHINGTON, A.B. 1928
Kansas City, Mo.
MAX WHITE
Jewell
WYMAN WICKERSHAM
Kansas City, Mo.

12

—Degrees are from the University of Kansas unless otherwise noted.

SCHOOL OF MEDICINE

Presented by HARRY R. WAHL, *Dean*

Doctor of Medicine

WILLIAM ABRAMS, *Gr. Pharm.* 1927; B.S.
Med. 1930
Kansas City
DONALD A. ANDERSON
Salina
ARTHUR LAWRENCE ASHMORE, A.B. 1928,
Wichita University
Mayfield
EDWARD BRUCE BADGER
Carbondale
DAVID W. BASHAM, JR.
Wichita
JAMES O. BOLEY, A.B. 1928, Central Col-
lege
Kansas City
FREDERICK STAUFFER BRENNEMAN, B.S.
Med. 1930
Heston
ANDREW PORTER BROWN, A.B. 1929; B.S.
Med. 1930
Alton
WILLIAM BROWNE, A.B. 1929
Carbondale
EMERY C. BRYAN
Scranton
LUCILLE CARMAN, A.B. 1929
St. Francis
EDSON C. CARRIER
Kansas City, Mo.
PORTER M. CLARK, JR., B.S. Med. 1930
Giles
FREDERICK MAX CLUFF, A.B. 1929
Kansas City, Mo.
DESMOND CURRAN, A.B. 1929; B.S. Med.
1930
Kansas City, Mo.
KNOX DUNLAP
Maize
LESLIE F. EATON, B.S. Med. 1930
Chenue
HARRY E. ERNI, B.S. Med. 1930
Bison

FARRIS DE VOL EVANS, A.B. 1928
Coway Springs
URBAN HARRIS EVERSOLE, A.B. 1927,
University of Missouri
Lowry City, Mo.
HAROLD VANIVER FORD, B.S. Med. 1932
Kansas City
LELAND FOREST GLASER, A.B. 1929
Ozarkie
MOE GOLDBERG, B.S. Med. 1931
Kansas City
OTTO JOSEPH HARTIG, A.B. 1929; B.S.
Med. 1930
Lawrence
LESLIE CLAIRE HAYS, A.B. 1929; B.S.
Med. 1930
Lawrence
G. FREEMAN HELWIG
Topeka
ANDREW JACK HOEFER, A.B. 1927, Univ.
of Southern California
Fresno, Calif.
VIRGIL N. KENNEDY, A.B. 1928
Kansas City
SYLVIA YOUNG LOGGREEN, B.S. Med. 1930
Neotom
VICTOR J. LONGREEN, B.S. Med. 1930
Neotom
AUSTIN M. LONG
Waco, Texas
WILLIAM G. LOW, B.S. Med. 1930
Bronson
C. ALEX MCBURNEY, A.B. 1928; B.S.
Med. 1930
Newton
WILLIAM HAROLD MCCAIN, A.B. 1927
Buffalo
JAMES ALVIN MCNALLEY
Michigan Valley

ROBERT HAYDN MAXWELL
Wichita
GEORGE C. MEEK, B.S. Med. 1930
Idara
ROY HECTOR MOSER
Powhattan
ZACHARIAS MILLS NASON, A.B. 1929;
B.S. Med. 1930, Univ. of Missouri
Kansas City
MORRIS POLSKY
Kansas City, Mo.
CHARLES WINSLEY REED, JR.
Kansas City, Mo.
RAFAEL RIVERA
Barranquitas, Porto Rico
GUSTAVE A. ROY, B.S. Med. 1931
Kansas City, Mo.
CHARLES ABRAHAM ROYER
Coffeyville
ARTHUR B. R. SMITH
Kansas City
GEORGE EWING STAFFORD, A.B. 1928;
B.S. Med. 1930
Topeka
FRANK E. TOLLE, A.B. 1929
Overland Park
CLAYTON J. TRAYLOR
McCane
DAVID PAUL TRIMBLE
Emporia
CHARLES CLINTON UNDERWOOD, A.B.
1928, College of Emporia
Emporia
DANIEL R. WILSON
Kansas City
JESSE W. YOUNG
Kansas City
HAROLD VICTOR ZUBER, A.B. 1927;
A.M. 1931
Kansas City

13

—Degrees are from the University of Kansas unless otherwise noted.

Certificate of Internship

JOHN J. DECKER, JR., B.S. Med. 1929;
M.D. 1931, Univ. of Wisconsin
Madison, Wis.
RUSSELL D. ETZENHOUSER, JR., B.S.
Chemical Engineering, 1920; M.D.
1931
Lawrence

ALBERT ANTON GAUSZ, B.S. Med. 1927;
M.D. 1931
Leavenworth
RUSSELL W. KERR, A.B. 1927, College of
Emporia; B.S. 1931; M.D. 1931
Council Grove
CLYDE O. MEREDITH, JR., M.D. 1931
Emporia

ALBERT STANLEY MISSALL, M.D. 1931
Lawrence
HARRY B. STAUFFER, A.B. 1925; M.D.
1931, Washington University
Cottonwood Falls
LYLE LYNDEN WOODFIN, A.B. 1921;
B.S. Med. 1931; M.D. 1931
Manhattan

8

Certificate of Nursing

BETTY BAILEY Lawrence	JUANITA MAY HULEN Pittsburg	JEAN MARTIN DeSoto	JANE NAHNE SWETTEN Lees Summit, Mo.
LAURA CAMPBELL Parsons	JOSEPHINE HULPHEU Dodge City	GENEVA E. MILLER Independence, Mo.	FLORENCE MAY TAPPAN Pueblo, Colo.
IVA JEAN CAUBLE Benedict	VIOLLET KELLER Valeda	LUCILLE VIVIAN MCGREGOR Miami, Okla.	LOLA ETHEL TERRASS Alma
RENA MAY GAZAWAY Parsons	MARTHA KOHRS Dillon	RUTH ELIZABETH OLMSTED Lawrence	FLORENCE THOMAS Altco
IONIE HILSON Clay Center	ILA TINKLER-LAWSON Gypsum	EDYTHE LUCILLE PHILLIPS DeSoto	THELMA C. WEATHERS Great Bend
	MILDRED IRENE MAKEMSON Parsons	RUTH MARLAN ROMIG Topeka	22-83

THE GRADUATE SCHOOL

Presented by ELLIS B. STOFFER, *Dean*

Master of Arts

PAULINE ELIZABETH ALBRITTON, B.S. 1931, Northwestern University THESES: Canonical expansion for the equations of curves	<i>Mathematics</i>	Cunningham
RUSSELL JAMES ANDERSON, A.B. 1925, University of Kansas THESES: Grant and Johnson 1865-1869.	<i>History</i>	McPherson
HELEN BAKER, A.B. 1924, Southwestern College THESES: Harry Lee Wilson as a Sumnerist.	<i>English</i>	Winfield
BERNARD LESTER BARNARD, A.B. 1929, University of Kansas THESES: A history of municipal ownership of public utilities in Kansas.	<i>Political Science</i>	Lawrence
LELAND JUDD BARROWS, A.B. 1928, University of Kansas THESES: An outline of county government in Kansas.	<i>Political Science</i>	Lawrence
JAMES CHARLES BATES, A.B. 1927, University of Kansas THESES: Comparative anatomical research within the genus <i>Bibex</i> .	<i>Botany</i>	Lawrence
PHILIP OSBORNE BELL, A.B. 1931, University of Kansas THESES: On certain recurring sets of residues associated with composite moduli.	<i>Mathematics</i>	Kansas City, Mo.
JOSEPHINE LENORE BLADES, A.B. 1928, University of Kansas THESES: Life and works of Fernin Caballero.	<i>Spanish</i>	Independence
DWIGHT LEMERTON BOLINGER, A.B. 1930, Washburn College THESES: The philosophy of Pio Baroja with special reference to the influence of Nietzsche.	<i>Spanish</i>	Versailles, Mo.
THOMAS WARFIELD BOTTS, A.B. 1927, Westminster College THESES: Disposal of the Civil War 1847.	<i>History</i>	Princeton, Mo.
LOIS MAE BOWERS, B.S. Educ. 1930, State Teachers College, Emporia THESES: Technical devices in the comedias of Calderon.	<i>Spanish</i>	Herington
VIRGINIA GENE BOWERS, A.B. 1930, University of Kansas THESES: The political cartoon in America and Europe.	<i>Journalism</i>	Wellington
HOWARD DAVIS BREICH, A.B. 1918, University of Illinois THESES: Spain in European reconstructions of 1814-1815.	<i>History</i>	Lawrence
PEARL ANNA BRIGGS, A.B. 1930, Friends University THESES: An edition of Browning's <i>The Ring and the Book</i> with cross-references indicating parallels and contradictions between the books. Two volumes.	<i>English</i>	Wichita
LUOMILLA BUKETOFF, A.B. 1931, Washington Square College, New York University THESES: Felipe Trigo.	<i>Spanish</i>	Brooklyn, N.Y.
CLARENCE G. CHERIMAN, A.B. 1927, William Jewell College THESES: <i>Juan José</i> by Joaquin Boscana.	<i>Spanish</i>	Liberty, Mo.
HAROLD S. CHOCULL, A.B. 1927, College of Emporia THESES: Some indine derivatives of hydroxy-diphenyl ether and related compounds.	<i>Chemistry</i>	Humboldt
CLAUDE WENDELL CLENDENON, A.B. 1931, University of Kansas THESES: A study of after-images. Influences of the after-image on memory and perception.	<i>Psychology</i>	Lawrence
LUCILE JOSEPHA CLEVELAND, A.B. 1925, University of Kansas THESES: A study of A.E. and his philosophy, as revealed in his work.	<i>English</i>	Kansas City, Mo.
VERNIE CLINEL CLINCH, A.B. 1926, University of Kansas THESES: The evolution of the labor problem in France during the eighteenth century—a study of unemployment relief.	<i>History</i>	Kansas City
WARD MARTIN COLE, A.B. 1930, Southwestern College THESES: The carbon monoxide content of the blood of garage workers.	<i>Biocchemistry</i>	Winfield
REX HARRY ALLEN DAVIS, B.S. Educ. 1919, State Teachers College, Emporia THESES: Effects of screen isolation on isotherms about a heated wire in air.	<i>Physics</i>	Atchison

ESTHER MARGARET DEMPSEY, A.B. 1930, Baker University	<i>Botany</i>	Baldwin
THESIS: Catalase activity, growth and spore production of spherotricha malorum as influenced by temperature.		
SAMUEL CHARLES DUFFY, A.B. 1930, University of Kansas	<i>Entomology</i>	Tonganoxite
THESIS: The Salidae of the western hemisphere in the Snow Entomological Collection.		
CHARLES A. DELLEY, B.S. Educ. 1924, State Teachers College, Emporia	<i>Economics</i>	Alta Vista
THESIS: The development of the Portland Cement industry in Kansas.		
PAUL ROBINSON DOBBIN, A.B. 1931, Sterling College	<i>Education</i>	Eskridge
THESIS: A study of Sterling College with special reference to its educational investments and educational contributions.		
GRACE DRAESSLER, A.B. 1930, Southwestern College	<i>English</i>	Winfield
THESIS: A survey of criticisms of American literature from 1914 to 1926, based on a selected list of French periodicals.		
GEORGE HERBERT DUERKSEN, B.S. Educ. 1926, Southwest State Teachers College, Weatherford, Okla.	<i>Chemistry</i>	St. Joseph, Mo.
THESIS: Relationship of pole potential to hydrogen ion concentration in the lead storage battery.		
FLOYD EBERLY, A.B. 1930, Friends University	<i>Chemistry</i>	Maize
THESIS: Part I. Studies in the preparation of isopropyl, Part II. On the alkyl derivatives of some 2-aryl thiantholones.		
CELIA EPSTEIN, A.B. 1930, University of Kansas	<i>Spanish</i>	Kansas City, Mo.
THESIS: Ensayo de Palacio Valdés.		
SISTER M. ROMANA FARELL, A.B. 1922, A.M. 1925, Creighton University	<i>Home Economics</i>	Atchison
THESIS: Homemaking activities of 140 college students in the Catholic four-year colleges in Kansas.		
FLOYD E. FASKACHT, A.B. 1929, Southwestern College	<i>Chemistry</i>	Lawrence
THESIS: Electromotive force method for determining transference numbers.		
DONALD EDMUND FLETCHER, A.B. 1931, University of Kansas	<i>Psychology</i>	Lawrence
THESIS: The effect of sodium amylal and sodium thiocyanate upon the behavior of the rat.		
MARVIN H. GARFIELD, A.B. 1926, Southwestern College	<i>History</i>	Wichita
THESIS: Defense of the Kansas frontier against Indians and outlaws 1844-1865.		
SISTER MARY JOSEPH GRANT, B.S. Educ. 1917, State Teachers College, Emporia	<i>English</i>	Leavenworth
THESIS: A study of the diction in certain stories by Mary E. Wilkins (Freeman), a contribution to the historical dictionary of American English.		
HARRIET ALLYN GEEK, A.B. 1930, Smith College	<i>Chemistry</i>	Norwich, Conn.
THESIS: A study of the solubility of acetates in subhydroxy acetic acid.		
RUBY LUCILE GISH, A.B. 1928, University of Kansas	<i>History</i>	Lawrence
THESIS: The political leadership of James G. Blaine (in connection with the Grant administration).		
PERDUE B. GRAVES, B.S. Educ. 1928, State Teachers College, Pittsburg	<i>Education</i>	Chanute
THESIS: An experimental investigation concerning high school civics vocabulary.		
MARTHA LOUISE GROTHNER, B.S. Educ. 1928, State Teachers College, Pittsburg	<i>Spanish</i>	Pittsburg
THESIS: Short stories of Jacinta Octavia Plédon.		
B. GORDON GUSTAFSON, A.B. 1929, University of Kansas	<i>Spanish</i>	Lawrence
THESIS: Fests, impresiones del pueblo, Anatasto El Pollo por Estanislao Del Campo. Edited with introduction, notes and vocabulary.		
GOMEZ CORTES HAMILTON, A.B. 1925, University of Kansas	<i>Botany</i>	Lawrence
THESIS: Comparative anatomical research within the genus Cuscuta.		
WILLARD WHITFIELD HARPER, A.B. 1930, Northwest Nazarene College	<i>Education</i>	Nampa, Ida.
THESIS: A study of the vocabulary content of economics for Kansas high schools.		
BARILETT LEONARD HEIS, A.B. 1931, Park College	<i>History</i>	Effingham
THESIS: Population vs. Nazareneism. A study of certain initial phases of the mobilizing of nineteenth century liberalism.		
HAROLD HASKELL HOODS, A.B. 1922, Fairmount College	<i>Education</i>	Wichita
THESIS: A case study of forty-three probation students in Wichita High School North, first semester school year 1930-31.		
LUCILE HELDINGER, A.B. 1916, University of Kansas	<i>English</i>	Wichita
THESIS: Poetry magazines in America from 1912 to 1911.		
FRANK E. HOECKER, A.B. 1930, College of Emporia	<i>Physics</i>	Emporia
THESIS: Measurement of the dielectric constants of dilute solutions of alcohol in non-polar solvents.		
GOLDIE LENORA HOFFMANN, A.B. 1930, University of Kansas	<i>English</i>	Lawrence
THESIS: A study of the manner in which Shakespeare closes his plays.		
FOSTER S. HOOVER, A.B. 1931, McPherson College	<i>Zoology</i>	Kansas City
THESIS: The mycology of Emmons Obolates.		
IRA C. IHDE, A.B. 1928, McPherson College	<i>History</i>	Hope
THESIS: The intent of the Interstate Commerce Act of 1887.		
LEO H. JASON, A.B. 1930, University of California at Los Angeles	<i>Spanish</i>	Santa Monica, Calif.
THESIS: Algunos aspectos interesantes de la filosofía de Don Miguel de Unamuno.		
HAROLD DAVID JENKINS, A.B. 1929, University of Kansas	<i>English</i>	Lawrence
THESIS: The Ogham in American poetry from the beginning to 1900.		
EULA MARY JOHNSON, B.S. Educ. 1928, State Teachers College, Pittsburg	<i>Mathematics</i>	Ft. Scott
THESIS: Parametric equations of plane curves.		
FLORENCE McCLAUKE KEHR, A.B. 1929, University of Kansas	<i>Education</i>	Republic
THESIS: The scholastic history of fifty problem children.		
WARD LAVON KESTER, A.B. 1930, University of Kansas	<i>History</i>	Jarbalo
THESIS: The three compromise plans 1860-1865.		
ROBERT KOGER, A.B. 1928, University of Kansas	<i>Spanish</i>	Albany, Ky.
THESIS: A study of the dramatic verifications of Don Francisco de Rojas Zorrilla.		
CHARLOTTE KRETSCH, A.B. 1915, University of Kansas	<i>English</i>	Perry, Okla.
THESIS: A study of the vocabulary in four works by Frank R. Stockton.		

FRANK C. LANCKENAU, Concordia Theological Seminary THESIS: William Trundle and his work.	English	Winfield
FLORENCIO TUMANGANG LUGAN, A.B. 1929, University of Illinois THESIS: English in the Philippines.	English	Laos, Haca Norte, P.I.
EUNICE PARKER MANNING, A.B. 1929, University of Kansas THESIS: A critical edition of <i>The How to Law</i> by George Coleman, the Younger, With an introduction and notes.	English	Lawrence
R. ROSTELL MANSFIELD, B.S. 1931, University of Kansas THESIS: A comparative study of the helminthes of the Anura from five given localities.	Zoology	Kansas City
GUITA MARBLE, A.B. 1930, University of Kansas THESIS: A study of the electro-analysis of copper.	Chemistry	Troy
RALPH MATHEIS, A.B. 1927, University of Kansas THESIS: <i>Pyrausta nubilalis</i> hubn. Handling of single-generation larvae to supply parasite data.	Entomology	Mourao, Mich.
MYRON G. MESSERHEIMER, A.B. 1931, University of Kansas THESIS: An experimental study of sacral flicker with emphasis upon the qualitative aspects of the problem.	Psychology	Lawrence
KATHERINE LOUELLA MOORE, A.B. 1930, Baker University THESIS: Practical humanitarianism in 18th century France.	History	Humboldt
HELLEN WELCH MUELLER, A.B. 1923, University of Kansas THESIS: The historical dramas of Eduardo Marquina.	Spanish	Kansas City, Mo.
FRANCIS J. MURRAY, A.B. 1926, University of Montana THESIS: Chicago in creative literature, 1900-1925.	English	Lawrence
JONATHAN OSCAR NOTTINGHAM, A.B. 1931, University of Kansas THESIS: The genus <i>Carnoccephala</i> (Homoptera, Cicadellidae).	Entomology	Lawrence
BARBARA RUTH OLINGER, A.B. 1923, University of Kansas THESIS: The Southwest as treated in a selected list of American novels.	English	Lawrence
GEORGE ARTHUR OLSON, A.B. 1928, University of Kansas THESIS: Political complicity and election of General Grant in 1868.	History	Glasco
IYA DORA OMAN, A.B. 1912, Baker University THESIS: The Riemann surface for the function $W_{\infty}^{-2} z^{1/2} z^{1/2} z^{1/2}$.	Mathematics	Garnett
SISTER MARY MARIE ORR, A.B. 1928, University of Kansas THESIS: The historical novel in America 1894-1912.	English	Leavenworth
SETH J. OWENS, A.B. 1920, University of Kansas THESIS: A study of the comparative costs of secondary education in Chautauque County, Kansas.	Education	Sedan
JOHN EDWARD PATTERSON, A.B. 1891, Southern Illinois State Normal University THESIS: The growth of the Roomwald Schools in North Carolina since 1911.	Education	Durham N., C.
MYLES F. PEMBER, JR., B.S. Educ. 1927, State Teachers College, Pittsburg THESIS: Modern newspaper trends and policies.	English	Parsons
HAROLD TRUMAN PETERS, A.B. 1931, University of Kansas THESIS: The genus <i>Xerotocephalus</i> in North America (Homoptera, Cicadellidae).	Entomology	Lawrence
MYRON A. PETTON, A.B. 1930, University of Kansas THESIS: Country and city life in the plays of Tirso de Molina.	Spanish	Lawrence
VIRGINIA D. RICE, A.B. 1928, William Jewell College THESIS: A study of the diction in the first four volumes of Harper's Magazine.	English	Liberty, Mo.
MERRITT ELSAHA ROBERTS, A.B. 1930, University of Kansas THESIS: On some derivatives of hydroxy- and amino-diphenyl.	Chemistry	Kansas City
RANDALL ROYCE, A.B. 1930, Southwestern College THESIS: A comparison of the copper and silver coulometers and a study of the function of ethyl alcohol in the acetate-copper coulometer solutions.	Chemistry	Winfield
ELIZABETH CHRISTINE RUPP, A.B. 1930, University of Kansas THESIS: The proposed Austro-German Customs Union.	Political Science	Halstead
THOMAS C. RYTHER, A.B. 1926, University of Kansas THESIS: The rural press in Kansas.	Journalism	Lawrence
ALICE SCHULTZ, A.B. 1929, University of Kansas THESIS: An evaluation of the Hayas adaptation of the Terman-Binet Intelligence Test for the blind.	Psychology	Lawrence
ALICE JOSEPHINE SHAW, A.B. 1930, Ottawa University THESIS: The romantic novel at the turn of the century. A study of the romantic novel in England from 1830 to 1900.	English	Cherryvale
JOHN GILBERT SHAW, A.B. 1930, University of Kansas THESIS: The biology of <i>Boreochus paludatus</i> (Carré) (Coleoptera-Curculionidae).	Entomology	Lawrence
JOHN PENFIELD SHEA, A.B. 1910, University of Kansas THESIS: Ethies of Sophocles.	Philology	Kansas City, Mo.
JAMES F. SHARKE, A.B. 1929, Oberlin College THESIS: The registration of José María de Pereda.	Spanish	Angola, Ind.
NEIL F. SHIELL, B.S. Educ. 1926, State Teachers College, Pittsburg; M. S. Educ. 1929, University of Kansas THESIS: Certain propositions of the triangle.	Mathematics	Edgingham
SISTER ROSE MATTHEW SHILLER, A.B. 1927, University of Kansas THESIS: François Villon in French and English drama and fiction since 1877.	French	Leavenworth
PAULINE B. SLEETH, A.B. 1906, College of Emporia THESIS: The earlier and later works of Virginia Woolf.	English	Arkansas City
MARC JACK SMITH, A.B. 1931, Ottawa University THESIS: Letter and agriculture 1913-1917.	History	Simla, Colo.

LEE ANNA JEWELL SMOCK, A.B. 1925, Bethany College THESES: <i>Roscoe Creaking and the Great Administrations.</i>	History	Galena	
MARGARET PARSON-SPEELMAN, A.B. 1930, University of Kansas THESES: <i>A collection of folk stories of the Americas Indian. Illustrated with Indian designs by Vincent Mott, a full-blood Flathead Indian.</i>	English	Lawrence	
MINNIE D. STAMBAUGH, A.B. 1931, University of Kansas THESES: <i>A study of the lemniscates of the digestive tract of the cat (<i>Felis Domestica</i>).</i>	Zoology	Burdett	
JESSE EDWIN STARECK, B.S. Chem. Eng. 1928, University of Kansas THESES: <i>A study of the lyophilic nature of cellulose acetate in liquid ammonia.</i>	Chemistry	Benton	
ROBERT K. STRANATHAN, A.B. 1931, University of Kansas THESES: <i>A proposed method for the measurement of the loss in velocity of electrons in gases at reduced pressures.</i>	Physics	Lawrence	
HAZEL ALBERTA THOMPSON, B.S. Educ. 1927, State Teachers College, Pittsburg THESES: <i>The sixth Pan-American conference, Havana, 1928.</i>	Political Science	Little River	
WILLIAM RICHARD TELMON, A.B. 1930, University of Kansas THESES: <i>The legislative history of the Capper-Volstead Act.</i>	History	Kansas City	
KYLLI TAUBERLOON, A.B. 1916, Friends University THESES: <i>A study of high school libraries in the closed class cities of Kansas, 1914.</i>	Education	Conway Springs	
MARY LINK TURNER, Ph.B. 1921, University of Chicago THESES: <i>The Victorian social scene in the novels of George Meredith.</i>	English	Kansas City	
ZATELLA ROWENA TURNER, A.B. 1929, University of Kansas THESES: <i>The element of poetical justice in the fiction of Anthony Trollope.</i>	English	Kansas City	
WINNONA S. VENARD, A.B. 1928, University of Kansas THESES: <i>Nashua State.</i>	Mathematics	Ness City	
AMBER WADDLE, A.B. 1925, Baker University THESES: <i>Thomas Dakker's Pamphlets.</i>	English	Burlingame	
NAOMI WADDLE, A.B. 1921, Baker University THESES: <i>El Barón by Leandro Fernandez Moratin.</i>	Spanish	St. Louis, Mo.	
MYRL V. WALKER, B.S. Educ. 1927, State Teachers College, Hays THESES: <i>Notes on North American fossil Lagerstätten.</i>	Zoology	Englewood	
OSVILLE SELKIRK WALTERS, A.B. 1927, University of Kansas THESES: <i>Observations on the blood of normal subjects during fetal liver feeding.</i>	Physiology	Lawrence	
ISABEL WATKINSON, A.B. 1909, Wilmington College THESES: <i>WHY constitutes the beginning of a Latin sentence.</i>	Latin	Billing, Mo.	
ALDEN ORISON WEBER, A.B. 1931, University of Kansas THESES: <i>The effects of auditory stimulation on visual brightness.</i>	Psychology	Ozawatomie	
JOHN WILLIAM WELLDORN, A.B. 1918, Baker University THESES: <i>Effects of student teaching on pupils in two beginning algebra classes in the Baldwin, Kansas, High School.</i>	Education	Baldwin	
JOSEPHINE WHEELER, A.B. 1931, University of Kansas THESES: <i>A study of the works of Ramon Perez de Ayala.</i>	Spanish	Kansas City, Mo.	
DOROTHY MCCARTNEY WHITNEY, A.B. 1926, University of Kansas THESES: <i>Studies on Endomorpha Histolytica, its accompanying bacteria, and Blastocystis Hominis.</i>	Bacteriology	Lawrence	
KARL ARDEN YOUNGSTROM, A.B. 1930, University of Kansas THESES: <i>The significance of osteoclasts in embryonic pig blood.</i>	Anatomy	Lawrence	
HAROLD VICTOR ZIEGLER, A.B. 1927, University of Kansas THESES: <i>Studies in bacterial association.</i>	Bacteriology	Lawrence	112

Master of Science

LLOYD L. BOUGHTON, B.S. Pharm. 1926, University of Iowa THESES: <i>The chemistry of the blood in mesles.</i>	Pharmacy	Lawrence	
NORFLEET LYNN GARNY, JR., A.B. 1916, Southwestern University; B.S.E.E. 1919, University of Tennessee THESES: <i>Test of 1/20 scale model of Sparrow c2-19.</i>	Mechanical Engineering	Clarksville, Tenn.	
ALLEN W. DOWELL, B.S.A. 1930, University of Arkansas THESES: <i>Chermides of Kansas.</i>	Entomology	Fayetteville, Ark.	
GEORGE JOSEPH FIEDLER, B.S.E.E. 1926, Kansas State Agricultural College THESES: <i>Railway electrification and its application to the Chicago and Illinois Midland Railroad.</i>	Electrical Engineering	Buiston	
RAYMOND FLOYD GARD, B.S. Med. 1925, M.D. 1927, University of Kansas THESES: <i>A study of Thrombosis.</i>	Surgery	Halstead	
LLOYD CLARK HOPKINS, JR., B.S.E.E. 1911, University of Kansas THESES: <i>Operation of the polyphase induction motor with unbalanced rotor circuits.</i>	Electrical Engineering	Lawrence	
IRENE ANITA KOENEKE, A.B. 1921, Central Wesleyan College, M.D. 1927, Washington University THESES: <i>Uterine hemorrhage due to extra-uterine influences.</i>	Surgery	Halstead	
ARCH EDWARDS SPEELMAN, B.S. Med. 1926, M.D. 1928, University of Illinois THESES: <i>Histogenesis of hyperophthosia.</i>	Surgery	Halstead	

GEORGE ALVIN WALKER, B.S. Med. 1910, University of Kansas THESES: Some observations on the early development of the vestibular nuclei in the white rat.	Anatomy	Lawrence	
WALTER B. WILLIAMS, B.S.E.E. 1911, University of Kansas THESES: Operation of the polyphase induction motor with unbalanced rotor circuits.	Electrical Engineering	Lawrence	10

Master of Music

DOROTHY KUBERTSINA, B.M. 1930, University of Kansas THESES: Trio in C major in Negro style for violin, viola, and piano.	Lawrence	1
---	----------	---

Master of Science in Education

JOHN N. BROADBENT, B.S. Educ. 1915, State Teachers College, Pittsburg THESES: A quantitative analysis of five general science texts.		Kansas City, Mo.	
BESSE BORTON CANNON, Ph.B. 1921, University of Chicago THESES: A proposed laboratory plan of English instruction for below-average children.		Kansas City, Mo.	
CHARLES A. DAVIS, B.S. 1913, Kansas State Agricultural College THESES: The application of a marking system based on the standard deviation.		Topeka	
GORDON DAVIS, B.S. Educ. 1929, State Teachers College, Pittsburg THESES: Unit costs of instruction in nine of the smaller rural high schools of Kansas for the first semester of 1931-32.		Lawrence	
MARY FEE, B.S. Educ. 1930, University of Kansas THESES: Comparative discrimination and validity of five group mental tests.		Lawrence	
EMMETT LESLIE FINK, B.S. Educ. 1922, State Teachers College, Hays THESES: Commercial teachers and commercial education in Kansas high schools.		Lawrence	
VERNON WOODROW GOLDSMITH, B.S. Educ. 1927, State Teachers College, Emporia THESES: A personal study of a group of college letter men and non-letter men of the University of Kansas.		Topeka	
JOSEPH J. HENDRIX, B.S. 1926, Kansas State Agricultural College THESES: Unit cost of instruction in nine of the larger rural high schools of Kansas for the first semester of 1931-32.		Lane	
WILLIAM CARL KAMPSCHROEDER, B.S. Educ. 1927, University of Kansas THESES: Extra-curricular accounting practices in 200 high schools of Kansas.		Richmond	
DEE SETH LAUYER, B.S. Educ. 1926, State Teachers College, Emporia THESES: Commercial teachers and commercial education in Kansas high schools.		Nickerson	
WINNIE MAGON, B.S. Educ. 1929, University of Kansas THESES: Certain differences between Indian children and white children on the ninth and tenth grade levels.		Lawrence	
LEWIS R. PERRY, B.S. 1921, Kansas Wesleyan University THESES: Relationships between some physical and educational measures.		Lawrence	
ROYAL VICTOR PHINNEY, B.S. Educ. 1921, State Teachers College, Emporia THESES: The two year junior high schools of Kansas, a survey.		Larned	
ELSIE SOPHIE SCHELLEGE, A.B. 1927, University of Tulsa THESES: A study of the size of the vocabulary of the junior high school pupils of Lawrence, Kansas, in written composition.		Tulsa, Okla.	
ANDREW FRANKLIN SENTER, B.S. Educ. 1916, State Teachers College, Emporia THESES: The relation of grades made in college by twenty-seven teachers and their success in teaching.		Ottawa	
LEONARD JOEL STARK, B.S. Educ. 1921, State Teachers College, Emporia THESES: A study of the promotion and the classification of pupils in the elementary schools—Lincoln, Kansas.		Lincoln	16

Master of Education

JAMES PERRY BIRD, B.S. Educ. 1926, University of Kansas		Kansas City, Mo.	
LUTHER NATHANIEL BOUSKA, B.S. Educ. 1924, University of Kansas		Haddam	
JESSE EARL BOWERS, A.B. 1920, Washburn College		Los Angeles, Calif.	
MARGARET BROWNE, A.B. 1927, Washburn College		Topeka	
FOREST E. HEWITT, B.S. Educ. 1926, University of Kansas		Walnut	
ROBERT ELMER HENDERSON, B.S. 1927, Central State Teachers College, Edmond, Okla.		Hugo, Okla.	
LAUREN ARMSBY ROBBINS, A.B. 1924, College of Emporia		Anthony	
JOHN H. ROBINSON, A.B. 1925, Southwestern College		Winfield	
ROY R. SLAGEL, A.B. 1924, Baker University		Fairview	
BERNARD RAPHAEL THORPE, A.B. 1918, Wittenberg College		Powhattan	
ALBERT UNRUH, A.B. 1921, McPherson College		Jewell	
WALTER GLEN WARD, B.S. Educ. 1924, State Teachers College, Pittsburg		Silver Lake	12

Master of Business Administration

HOWARD ALEXANDER BROOKS, B.S. Bus. 1926, University of Kansas THESIS: Mutual insurance associations in the German speaking communities of Kansas.	Brewham, Texas	
J. EDWARD HEDGECOCK, A.B. 1928, Baker University THESIS: Advertising of fabricated parts.	Baldwin	
EUGENE MAYNARD, A.B. 1927, University of Kansas THESIS: Fiscal administration of Kansas institutions.	Holton	3

Master of Architecture

JAMES HOWARD COMPTON, B.S. Arch. 1931, University of Kansas THESIS: The building of the University of Kansas.	Lawrence	
THOMAS LARRICK, B.S. Arch. Eng. 1928, B.S. Arch. 1931, University of Kansas THESIS: A school for contemporary architectural training.	Lawrence	2

Architectural Engineer

CARL EMIL PAULSEN, B.S. Arch. Eng. 1924, University of Kansas THESIS: Some practical aspects of structural design for buildings.	Atchison	1
---	----------	---

Civil Engineer

JAMES LLOYD BARROW, A.B. 1920, B.S.C.E. 1923, University of Kansas THESIS: The organization and functions of the division of sanitation, Westchester County Department of Health.	White Plains, N. Y.	
JOHN ADRIAN DAVENPORT, B.S. Eng. 1912, University of Kansas THESIS: The design and construction of bulkheads to withstand high pressure, in connection with the flooding of portions of two mines.	St. Louis, Mo.	
ARTHUR WILLIAM HETTLING, B.S.C.E. 1924, University of Kansas THESIS: A study of the present sanitary sewer system, recommendations, and design for relief mains in the city of Hutchinson, Kansas.	Hutchinson	3

Mechanical Engineer

EMORY N. KEMLER, B.S.M.E. 1927, University of Kansas, M.S. 1931, University of Pittsburgh THESIS: The analysis of deep well pumps.	Pittsburgh, Pa.	1
--	-----------------	---

Doctor of Philosophy

JOSEPH FRANCIS DECK, A.B. 1928, M.S. 1930, St. Louis University THESIS: Ring systems by use of methyl pseudo thiouras.	Chemistry	St. Louis, Mo.
ARTHUR THOMAS DONOHUE, A.B. 1920, Columbia College, A.M. 1927, Creighton University THESIS: A history of the early Jesuit missions in Kansas.	History	Salina
JAWIN BRUCE DOUGLASS, B.S. 1926, Monmouth College THESIS: On certain reactions of benzoyl and furoyl isothiocyanates and their derivatives.	Chemistry	Lawrence
ELMER BIRDSELL GIFT, A.B. 1907, A.M. 1915, University of Kansas; A.M. 1927, University of Chicago THESIS: The changing conception of teaching United States history and its influence upon the practice of teaching United States history in grades seven and eight in the schools of Kansas.	Education	Fayette, Mo.
VERNON HOLM, B.S. 1928, Bethany College, A.M. 1930, University of Kansas THESIS: Some studies in the transference of ions in anhydrous acetic acid solutions.	Chemistry	Lindsborg
GEORGE WILLIAM KLEINHEG, A.B. 1902, A.M. 1911, University of Kansas THESIS: The elementary course in sociology in 100 American colleges and universities.	Sociology	Lindsborg
HAROLD LORADNE KNOWLES, A.B. 1926, Phillips University THESIS: Electric currents of ethyl alcohol vapor and possible effect of conductivity.	Physics	Gainesville, Fla.
LOYD E. MALM, B.S. 1928, Bethany College, A.M. 1930, University of Kansas THESIS: The electrical conductance of gels and its bearing on the problem of gel structure.	Chemistry	Lindsborg
ERNEST KINGSTON PATTON, A.B. 1911, Geneva College, A.M. 1930, University of Kansas THESIS: The psychology of insight.	Psychology	Winchester
WARREN WESLEY WILCOX, A.B. 1924, Dakota Wesleyan University, A.M. 1929, University of Kansas THESIS: A new theory of the visual resolution threshold.	Psychology	Baldwin 10-17-1127



The list contains 1127 degrees and certificates to 1004 persons from 220 cities in 87 counties of Kansas; from 76 cities in 23 other states, and from 7 cities of two foreign countries.



Gifts - Honors - Memorials

GIFTS IN NUMBERS have come to the University of Kansas from its very founding—lands—buildings—service—scholarships—and the University in turn has sought to perpetuate the memory of the donors. Its buildings bear the names of men who have toiled that the University might be established and of men whose liberality has made the buildings possible. A bronze plate here recalls a donor; another plaque commemorates the life and service of some revered faculty member, or some son of the University who has served well his state. Less tangible, but no less valuable, are the scholarships and prizes, many of which are in themselves memorials, and all bear testimony to the interest that friends of the University have in its welfare and in that of its students.

Two notable gifts of recent days are the Watkins Memorial Hospital, which was dedicated at this Commencement, and the Summerfield Scholarships, which have now reached their full quota, with groups in each of the four years of University instruction.

The Summerfield Scholarships were established in the summer of 1929, with the appointment of the first group of young men under a grant by Solon Summerfield, New York manufacturer, who had received degrees from this University in 1899 and 1901. Each group has been re-appointed, as was Mr. Summerfield's intention, so that each appointee will receive a complete college course free from financial worry. Appointments this spring brought the total to 47. One student from the first group is this June completing his work for his Bachelor's degree. Selections are made strictly upon a scholarship basis, after exhaustive examinations and tests; the stipend of each is decided according to his need.

The Watkins Memorial Hospital is the second major gift of Mrs. Watkins to the University. The first was a residence hall for self-supporting women students, and the tract of land on which it is situated, adjoining the campus. It was finished six years ago.

GIFTS OF LAND to the University began with the original 40 acres on which the older principal buildings are now situated, given by the city of Lawrence, as was part of the North College double block. The rest of this latter site was given by Sen. James H. Lane, when scarcity of funds had made it desirable to erect the first University building there on foundation already started on Mount Oread.

These 40 acres were deeded to the state by the city of Lawrence after it had obtained them from Charles Robinson, resident of Lawrence almost from its founding and the first governor of the State, in exchange for lots in the 1100 block on Louisiana.

Governor Robinson further showed his interest in the University by deeding to it his farm of 1300 acres northeast of Lawrence, valued at \$150,000. Part of the farm is now leased by the city of Lawrence for an airport. Governor Robinson's interest in the University is perpetuated by the bestowal of his name on the University gymnasium and by a marble bust in Administration rotunda.

The nine acres of the original School of Medicine site also were given the University in this year, by Doctor Simeon Bell of Kansas City, who later added 420 acres of land in Missouri and 101 lots in Rose-dale, the sale of which made possible the construction of the original Bell hospital and School of Medicine class buildings. Dr. Marshall Baker added to the hospital site 18½ lots, worth \$800. Five years later, when it became obvious that the original site for Bell Hospital was inadequate for a plant such as the state needed, citizens of Kansas City provided the new tract at a cost of \$66,000.

The title, "Bell Memorial Hospital," was transferred to the central unit of the great hospital plant which the State is now building on the 13-acre tract at Thirty-ninth Street and Hudson Road. Four of the projected dozen buildings of the medical center have been erected.

SPOONER-THAYER ART MUSEUM carries joint honor to William B. Spooner of Boston, uncle of the wife of Chancellor Snow, who provided the building, and to Mrs. William B. Thayer of Kansas City, who gave to the University her wonderfully diversified collection of art objects, estimated to be worth at least a quarter of a million dollars. Mr. Spooner's gift in 1894 provided also the residence occupied by the Chancellor and the land on which both buildings stand. Five years later George Fowler of Liverpool, England, a friend of Prof. L. I. Blake, gave \$21,000 for Fowler Shops.

Fraser Hall commemorates the untiring efforts of the University's first chancellor in raising funds when none seemed available. By constant effort he induced the city of Lawrence to vote \$100,000 in bonds which provided the means of enclosing the building,

but finished only two or three rooms. Ceaseless work brought legislative appropriations, and ultimately a completed building. After Chancellor Fraser had retired from office his name was fittingly given to what had been "University Hall."

Doctor Snow, member of the faculty from the first, and 12 years its chancellor, is remembered both in the old Snow Hall, which must soon be removed, and the new biological science building, dedicated but two years ago this Commencement. Marvin Hall is named for Frank O. Marvin, engineering dean, and son of Chancellor James Marvin.

Other buildings carrying memorial names include Dyche Museum, named for Prof. L. L. Dyche, noted naturalist and originator of present practice of mounting animals on display; Blake Hall, named for Professor L. I. Blake, physicist teacher; and Green Hall, for the late James Woods Green, 40 years dean of the law school. Corbin Hall, dormitory for women students, is named for Miss Alberta Corbin, professor of German, who with the aid of women's clubs of Kansas was largely instrumental in obtaining dormitories for college women of Kansas, and Watkins Hall for Mrs. J. B. Watkins, its donor. Watson Library honors Miss Carrie Watson, an early graduate, and librarian emerita, and Haworth Hall is named for the geologist, Erasmus Haworth now of Wichita.

Two war memorial projects on the campus represent investments of \$850,000, much of which was contributed by alumni, students, and friends of the University. Nearly \$400,000 of the contributions went into the Memorial Stadium, which has been finished through bond issues of the Athletic Association, and nearly \$300,000 of contributions have gone into the erection and partial completion of the first units of the Kansas Memorial Union.

At the time of the campaign to raise \$1,000,000 for the Memorial Stadium and Memorial Union, friends of the late Dean James Woods Green joined the movement and raised a fund of \$33,000, with which was erected the statue in front of the Law Building. The bronze was designed by Daniel Chester French.

In the spring of 1922, Mrs. A. Henley of Lawrence gave a large residence, just a few steps from the campus, to be the social and executive center of the University Y.W.C.A. It is known as "Henley House."

In 1918, Dr. J. L. Porter of Paola gave to the University a farm of 160 acres in Miami County, and valuable securities, making a total gift of \$33,000, income from which was to be used for further scholar-

ship and research at the School of Medicine. The Porter Scholarship is awarded annually to the outstanding member of the senior class. The fund provides also important lectureships.

The will of the late Mrs. Nellie S. Boylen, of Kansas City, gave to the University a fund of some \$70,000 to promote research at St. Margaret's hospital, under the direction of the University's School of Medicine. This will has just recently been fully probated.

The will of the late Harry J. Diffenbaugh of Kansas City, Mo., provides a fund of \$50,000, interest of which is to be used in aiding young people of that city who desire to attend the University of Kansas. The will has not been fully probated.

A bequest for the University was made by Selden L. Whitcomb, professor of English, and Mrs. Whitcomb, both of whom died last year.

KANSAS MEMORIAL UNION, itself a memorial building, displays the pictures and the record of the 128 men and two women who died as the direct result of the World War. The names are cast in bronze in the entrance way of the building. Elsewhere in the building a large panel proclaims that Alfred Cecil Alford, first lieutenant of the twentieth Kansas, was killed in action in the Philippines, "The first son of the University to die on the field of battle." (His mother, by the way, was in that little group who sought admission to the University when it first opened its doors.)

The University memorials do not, however, unduly exalt the military. In a class room in Fraser is a bronze marker inscribed: "Here taught for 14 years James Hulme Canfield, professor of history and political science. . . . 'He loved this state and was loved by its children'."

In the central hall of the Administration building is another memorial to Professor Canfield, who later became chancellor of the University of Nebraska. In the same hall is a tribute to Chancellor Snow, and in new Snow Hall a corner is set aside in the entomology museum for his old desk and chair, and the little microscope which was the only equipment of the kind the University had in those days.

Also to be found in the central hall of Administration building is the memorial dedicated last commencement to Ephraim Miller, member of the faculty from 1874 to 1910. The class of 1881, at its semi-centennial reunion, provided the plaque and unveiled it with the tribute, "An accomplished scholar and an inspiring teacher." Another bronze

has the likeness of David Hamilton Robinson, first professor of Latin.

The same central hall of Administration Building has pictures of half a dozen graduates of the University who have served also on its board of regents. The list includes Charles Sumner Glead, A.B. 1880, regent from 1887 to 1893 and 1896-7; James Willis Glead, 1907-1911; George Scott Hopkins, 1901 to 1913; Frank Grant Crowell, 1895 to 1907; William Yost Morgan, regent from 1907 to 1911, and also chairman of the present Board of Regents from 1924 to 1930; and Charles F. Scott, 1891 to 1901.

Plaques on which are inscribed from year to year names of students of outstanding scholastic attainment include the one in the Memorial Union for the "Honor Men" of the University, now numbering nine; the Williston Award in Geology, and the Dean P. F. Walker award in the School of Engineering and Architecture.

Placed among the pictures of American editors in the Journalism Building is a painting of Professor E. M. Hopkins, who taught journalistic writing in the University 30 years ago. Friends of Professor C. G. Dunlap two years ago presented a portrait of him to the library.

A portrait of Judge Nelson Timothy Stephens, by whose advice in 1875 the School of Law was established, is being presented at this Commencement. It is the gift of his daughter, Kate Stephens, of New York, a graduate in the class of 1875.

At this Commencement will be unveiled also a bronze marker on "The Prairie Acre," a small section of the campus where, on the south slope, south of Blake Hall, lies virgin Kansas soil. It is intended that this small tract shall ever remain as it was first seen by the settlers of Lawrence, with its prairie grass and its prairie flowers uncultivated.

Overlooking the Prairie Acre and the Wakarusa valley is the stone bench that commemorates the fact that nearly sixty years ago the Pi Beta Phi sorority was established at the University, the first of that group of social organizations which now provide the University homes for a goodly share of the students.

Numerous memorials of the various graduating classes are to be found on the campus, starting with a framed picture of the Temple of Karnak that was given by the first class.

Miles Wilson Sterling, A.B. 1883, A.M. 1893, is this year rounding out 49 years of active teaching. He is the University historian, and was author of "The Quarter Centennial History of the University of Kansas."

OVER THE YEARS many prize and scholarship awards have been established at the University. Some of these are self-explanatory as they appear in the annual Commencement announcement of honors, but the circumstances of the establishment of others are not always as evident.

The William J. Bryan prize is derived from the income of \$250 which was presented to the University by Mr. Bryan in 1898, upon the condition that the proceeds should be used for a "prize for the best essay discussing the principles which underlie our form of government."

The Hattie Elizabeth Lewis memorial was established in 1911 by Professor George Edward Patrick, of Washington, D.C., in memory of his wife, Hattie Elizabeth Lewis, a former student of the University. The memorial fund provides prizes, amounting to \$250 annually, for the best essays on some phase of the general theme, "The Application of the Teachings of Jesus to the Practical Affairs of Life."

The William Herbert Carruth memorial poetry prizes, established in 1927, are offered each year for the best poetry written by regularly enrolled students of the University of Kansas. The prizes are derived from the income of a fund contributed by friends of Professor Carruth.

The University Honor Award is announced annually at the Honors Convocation, designating the man of the preceding graduating class whose influence on University student life was adjudged most wholesome and helpful.

The Frances Schlegel Carruth scholarship in German, of \$100, established in 1909 by Prof. W. H. Carruth in memory of his wife, is open to the graduate of the Lawrence high school who passes the best examination in two years' entrance German.

The Delta Sigma Pi Key for men, and the Phi Chi Theta Key for women are awarded annually in the School of Business to outstanding students, and Lambda chapter of Chi Omega gives a prize to the ranking woman student in the department of economics or the School of Business.

The Henry Schott memorial prize in advertising was established in 1929 by Mrs. Schott of New York as a memorial to her husband, who was a former student in the University.

Sigma Delta Chi, national journalistic fraternity, annually designates "honor students" at the University of Kansas, as at other institutions having chapters of the organization.

Dr. E. H. S. Bailey, professor emeritus of chemistry, first awarded in 1931 a year's membership in

the American Chemical Society and subscriptions to its three publications to the best student in organic and quantitative chemistry.

The National Association of Drug Clerks grants membership as prizes to pharmacy students of outstanding scholarship.

The Scarab Prize and the American Institute of Architects Medal are awarded annually in the department of architecture, the former for sophomores and the latter for the student with the best four-year record. Alpha Rho Chi this year instituted a medal award for the architect giving promise of professional merit.

The Thayer prize for architectural design, is derived from the income of \$1,000 presented by the late Mrs. W. B. Thayer of Kansas City, and a gold medal, awarded to a student for excellence in architectural design.

The Alice Chittenden prize for the freshman student having the highest record in elements of architecture, was established by Goldwin Goldsmith, formerly head of the department of architecture, in honor of his mother.

The Rowlands Prizes in Design and Antique Drawing were established by Robert Rowlands of Lawrence and continued by his widow in his honor.

The Sigma Tau scholarship medal is provided by the national chapter for the engineering freshman of highest scholastic standing.

The Kansas State Section of the American Society of Civil Engineers annually awards a junior membership in the American Association of Civil Engineers to the civil engineer ranking highest for his four years in the school.

J. A. Keeler of Lawrence annually awards a prize to a student in the department of painting.

GIFT SCHOLARSHIPS, many of them memorial in character have been established in recent years.

The Marcella Howland memorial scholarship was established in 1899 by Mrs. Marcia Brown Howland of Lawrence in memory of her daughter Marcella, A.B., 1890.

The Charles S. Griffin memorial scholarship was established in 1910 by Mrs. Mary Griffin of Lawrence in memory of her son, Charles, A.B., 1894.

The Caroline Mumford Winston memorial scholarship of \$100, was established in 1912 by Mr. Thomas Winston of Lawrence in memory of his wife.

The Sarah M. Emery memorial scholarship was established in 1921 by Mrs. Mary Emery and Miss

Agnes Emery of Lawrence in memory of their daughter and sister, Sarah, A.B., 1886.

The Lathrop Bullene memorial scholarship was established in 1921 by Mrs. A. D. Weaver of Lawrence in memory of her father, Lathrop Bullene.

The Jessie May Tucker memorial scholarship was established in 1921 by Charles H. Tucker of Lawrence in memory of his wife, a student in 1886-87.

The Eliza Matheson Innes memorial scholarship fund, established in 1924 by the will of Mr. George Innes of Lawrence, in memory of his wife, is a bequest of \$5,000, the income from which is to be used "to assist deserving girls in getting an education at the University of Kansas." This income maintains three annual scholarships, including one honoring Mr. Innes.

The Watkins Hall scholarships, founded in 1926 by Mrs. Elizabeth M. Watkins of Lawrence, entitle the holders to residence in Watkins Hall. About 35 are awarded each year.

The Ida H. Hyde scholarship, founded in 1927 by Dr. Ida H. Hyde, formerly professor of physiology, is awarded annually to a woman student in biology.

The Arthur Jerome Boynton memorial scholarship was established in 1928 by the former students of Professor Boynton, head of the department of Economics.

The Lawrence Branch of the American Association of University Women in 1929 established a graduate fellowship in honor of Miss Helen K. Stevens who died a short time before that.

The Herbert S. Hadley memorial scholarship, established in 1930 by Henrietta Hadley Lyman in memory of her brother, '92, is a gift of \$200 awarded annually to some worthy young man, preferably one who expects to enter law.

Three years ago an anonymous friend of the University made possible a series of German Exchange Scholarships, and last year Dr. Otto H. F. Vollbehre, who had already given the University valuable books and maps, gave a second scholarship to send a K.U. student to Germany on an exchange basis.

Mrs. Edwin Emery Slosson of Washington, D.C., widow of the teacher, scientist, editor, last year established a \$500 scholarship to promote scientific research.

Friends of Miss Hannah Oliver, A.B. 1874, and for more than 40 years professor of Latin, are arranging a scholarship in her honor.

The Presser Foundation Scholarships are awarded by the Theodore Presser Music Company of New York in selected music schools of the country emphasizing public school music. Four such scholarships

were assigned to the University of Kansas last year and four were assigned again this year.

Gift Scholarships, not as memorials, include those presented yearly by the Women's Self Government Association of the University; the Lawrence branch of the American Association of University women; the University Women's club; the Torch Society of Mortar Board; the Phi Delta Kappa fraternity; Delta Sigma Theta Patroness club; the University House-mothers' Association; the Mrs. John T. Stewart scholarships in Fine Arts; the George Innes and Eliza Parry scholarships, also in Fine Arts.

LOAN SCHOLARSHIPS of a memorial character include the Lucinda Smith Buchan Memorial Scholarship, established in 1900 in memory of Lucinda Smith, A.B. 1895, by the alumnae members of the Pi Beta Phi sorority.

The Dr. G. W. Maser Memorial Scholarship, established in 1916 by Mrs. Pearl Maser Johntz of Parsons in memory of her father, is awarded to a woman.

The Frank Egbert Bryant Memorial Scholarship, established in 1917 by Mrs. Dora Renn Bryant in memory of her husband, Professor F. E. Bryant, formerly of the department of English, is open to women students of the college.

The Max Lowell Brown Memorial Scholarship, established in 1921 by Mrs. Lillie E. Brown of Lawrence in memory of her son, one of the first students of the University to die in the World War, is a loan to a man of the freshman class.

The Gertrude Bullene Weaver Scholarship, established in 1921 by A. D. Weaver of Lawrence in honor of his wife, to a student above the freshman year.

The J. C. NeuenSchwander Memorial Scholarship

was established in 1922 by Dr. Elise NeuenSchwander of the University faculty in memory of her father.

The Lucie March Memorial Scholarship was established in 1924 by the alumnae of Torch chapter of Mortar Board, in honor of Lucie Miles March, A.B. 1912, A.M., 1915, and the Emily V. Berger Memorial Scholarship, by the same organization, honors a member of the faculty from 1914 to 1920.

The Round Table Scholarship, in memory of Bertha Mix Rice, A.B. 1912, established in 1927 by the Round Table Club of Lawrence, is a loan of \$100 awarded to a woman student.

The Dr. Eliza Knowles Morgan Memorial Scholarship was established in 1928 by Professor Rose R. Morgan in memory of her mother.

The Helen Stevens Memorial Scholarship, established by Lambda Chapter of Chi Omega fraternity, is awarded in the spring of her junior year to a woman student, preferably in the department of mathematics. It honors a former member of the faculty, 1926-28, and of the organization.

Loan Scholarships non-memorial in character include the three established by the Betty Washington chapter of the Daughters of the American Revolution; two by Kappa Beta, Friends in Council Club of Lawrence; three by the W.S.G.A.; five by the Kansas City Alumni Association; the Junction City Branch of the A.A.U.W.; the El Dorado Women's Pan-Hellenic Association; the Lawrence Reading Club; the American Bankers' Association; the Lawrence Branch of Omicron Nu; the Tennola Club of Lawrence; Lucile Brown Rankin; the Ingleside Club; the Ladies Literary League of Lawrence; the Modern Book Club of Lawrence; the Men's Student Council; P.E.O. of Lawrence; and Kappa Kappa Gamma.

ANNOUNCEMENT OF HONORS FOR 1932

Earnest Boyce, professor of sanitary engineering, has been on leave of absence in the year 1931-32 for study under a grant by the Rockefeller Foundation.

Fellowships at the University of Kansas

Appointments to University of Kansas Fellowships in the Graduate School for 1932-33 are as follows:

JAMES MARKS BRENNAN, A.B. 1926, Dickinson College, A.M. 1931, University of Kansas, *Entomology*.

DANIEL P. JOHNSON, B.S. 1930, McPherson College, *Astronomy*.

BARTLETT LEONARD HESS, A.B. 1931, Park College, *History*.

KENNETH C. CRUMBINE, A.B. 1932, University of Kansas, *Physics*.

KATHERINE KAULL, B.M. 1912, University of Kansas, *Music*.

RUENEN J. RATH, A.B. 1931, University of Kansas, *History*.

LESLIE A. RUTLEDGE, A.B. 1932, University of Kansas, *English*.

WALTER A. VARVEL, A.B. 1932, University of Kansas, *Psychology*.

JOHN A. WILLIAMS, A.B. 1932, University of Kansas, *English*.

Appointments to Kansas College Fellowships in the Graduate School of the University of Kansas for 1932-33 are as follows:

BARBARA CATHERINE BERNSTORFF, A.B. 1932, Friends University, *Zoology*.

AMELIA JEANNETTE BETTS, B.S. Journalism, 1932, Baker University, *Journalism*.

EVALYN LOUISE FIELDS, A.B. 1932, McPherson College, *History*.

BENJAMIN WILLIS FUSON, A.B. 1932, College of Emporia, *English*.

HELEN M. HAMILTON, A.B. 1932, Southwestern College, *Romance Languages*.

JAMES DAVIS INGLE, B.S. 1932, Ottawa University, *Chemistry*.

RUTH GERTRUDE MONTGOMERY, B.S. 1932, Washburn College, *Biochemistry*.

MARJORIE MURPHY, A.B. 1932, University of Wichita, *Spanish*.

Fellowships in Other Institutions

The following named graduates and students of the University of Kansas have been appointed to fellowships in other institutions for the year 1932-33:

- GEORGE LAVERNE ANDERSON, A.B. 1926, A.M. 1931, of Waterville, Fellowship in History at the University of Illinois.
- LUDMILLA BURKOWSKA, A.M. 1932, of Bayonne, N. J., a Graduate Fellowship in Spanish, at Bryn Mawr College.
- KATHRYN COLWELL, A.B. 1932, of Glazco, a Scholarship in the Department of Social Work, *William and Mary College*, Richmond, Va.
- DAVID M. DELO, A.B. 1926, Miami University, A.M. 1928, University of Kansas, of Covington, Ky., Fellowship in Geology at *Harvard University*.
- ELEANOR RUTH ELDRIDGE, of Lawrence, a Fellowship in the GEORGE WATSON BROWN Department of Social Work, *Washington University*, St. Louis.
- FOLINE BRONNER EPSTEIN, A.B. 1931, of Lawrence, a Fellowship in the Department of Sociology, at *Washington University*, St. Louis.
- O. LEE FURSE, B.S. 1911, of Cheryvale, a Fellowship in the School of Mines at the University of Washington, Seattle.
- † J. EDWARD HEDGES, M.B.A. 1932, of Baldwin, Scholarship in the School of Business at *Johns Hopkins University*.
- LYNNDON MORROW, B.S. 1910, of Garfield, National Research Council Storrow Fellowship in Geology at *Yale University*.
- ROYCROFT G. MOSS, B.S. 1927, of Lawrence, a Fellowship in Geology at *Cornell University*.
- NORMAN D. NEWELL, B.S. 1910, M.S. 1931, of Lawrence, Fellowship in Geology at *Yale University*.
- CARL A. NIEMEYER, A.B. 1927, A.M. 1929, of Independence, Fellowship in English at *Harvard University*.
- EDWIN B. NEWMAN, A.B. 1928, A.M. 1930, of Topeka, and University of Kansas German Exchange scholar, at the University of Frankfurt, 1931-32, a Fellowship in Psychology at *Harvard University*.
- M. HARRY SATTYERFIELD, A.B. 1928, University of Kansas, A.M. 1930, University of Nebraska, of Oakley, Fellowship in Political Science at *University of Nebraska*.
- THEODORE R. SCHELLENBERG, A.B. 1928, A.M. 1931, Fellowship in History at the University of Pennsylvania.
- DOROTHY JEAN SHEARD, A.B. 1929, German Exchange Fellowship (psychology) from *Bryn Mawr College*.
- CLARK STEPHENSON, A.B. 1932, of Augusta, teaching Fellowship in Chemistry at the University of California.
- FREDERICK EDWARD WIRTH, A.B. 1932, of Brewster, Fellowship in Latin at the University of Chicago.
- CHEARLES WOLFSON, A.B. 1930, of Lawrence, Fellowship in Zoology at the University of California.

Interneships

Interneships for members of the graduating class of the School of Medicine have been awarded as follows:

- WILLIAM ABRAMS, *Missouri Methodist Hospital*, St. Louis, Mo.
- DONALD A. ANDERSON, *St. Luke's Hospital*, Kansas City, Mo.
- ARTHUR LAWRENCE ASSHOUB, *St. Francis Hospital*, Wichita, Kan.
- EDWARD BRUCE BADGER, *St. Margaret's Hospital*, Kansas City, Kan.
- DAVID W. BASHAM, *St. Francis Hospital*, Wichita, Kan.
- JAMES O. BOLEY, *Kansas City General Hospital*, Kansas City, Mo.
- FREDERICK STAUFFER BRENNEMAN, *St. Mary's Mercy Hospital*, City, Ind.
- ANDREW PORTER BROWN, *Kansas City General Hospital*, Kansas City, Mo.
- WILLIAM BROWN, *Gallinger Municipal Hospital*, Washington, D.C.

- EMERY C. BRYAN, *St. Margaret's Hospital*, Kansas City, Kan.
- LUCELLE CARMAN, *Protestant Hospital*, Denver, Colo.
- EDSON C. CARREER, *St. Mary's Hospital*, Kansas City, Mo.
- PORTER M. CLARK, JR., *Bell Memorial Hospital*, Kansas City, Kan.
- FREDERICK MAX CLUFF, *Akron City Hospital*, Akron, Ohio.
- DESMOND CURRAN, *Cleveland City Hospital*, Cleveland, Ohio.
- KNOX DENLIAD, *State University Hospital*, Oklahoma City, Okla.
- LESLIE F. EATON, *Broadlawn Hospital*, Des Moines, Iowa.
- HARRY E. ERNS, *Bell Memorial Hospital*, Kansas City, Kan.
- FARRIS DE VOL EVANS, *Cleveland City Hospital*, Cleveland, Ohio.
- URBAN HARRIS EVERSOLE, *Wisconsin General Hospital*, Madison, Wis.
- HAROLD VANDIVER FORD, *Public Health Service*.
- LELAND ROBERT GLASER, *St. Mary's Hospital*, Kansas City, Mo.
- MOE GOLDBERG
- OTTO JOSEPH HARTIG, *St. Margaret's Hospital*, Kansas City, Kan.
- LESLIE CLAIRE HAYS, *Bell Memorial Hospital*, Kansas City, Kan.
- G. FRIEMAN HELWIG, *Bell Memorial Hospital*, Kansas City, Kan.
- GEORGE HEINDRICKSON, *St. Louis City Hospital*, St. Louis, Mo.
- ANDREW JACK HOLZER, *San Diego County General Hospital*, San Diego, Calif.
- VIRGIL N. KENNEDY, *Los Angeles County General Hospital*, Los Angeles, Calif.
- CICILE MAYOR KOHN, *Memorial Hospital*, Kansas City, Mo.
- MARTIN LEICHTER, *Broadlawn Hospital*, Des Moines, Iowa.
- SYLVIA YOUNG LOGGREEN, *Trinity Lutheran Hospital*, Kansas City, Mo.
- VICTOR LOGGREEN, *Trinity Lutheran Hospital*, Kansas City, Mo.
- AUSTIN M. LONG, *St. Margaret's Hospital*, Kansas City, Kan.
- WILLIAM G. LOW, *Touro Infirmary*, New Orleans, La.
- C. ALEX. MCBURNEY, *St. Margaret's Hospital*, Kansas City, Kan.
- WILLIAM HAROLD MCCAIN, *St. Louis City Hospital*, St. Louis, Mo.
- JAMES A. McNALLEY, *Cleveland City Hospital*, Cleveland, Ohio.
- ROBERT MAXWELL, *Kansas City General Hospital*, Kansas City, Mo.
- GEORGE C. MEEK, *St. Mary's Hospital*, East St. Louis, Ill.
- ROY H. MOSER, *St. Mary's Hospital*, Kansas City, Mo.
- Z. MILES NASON, *Bethany Hospital*, Kansas City, Kan.
- DAVID F. PARKER, *Bethany Hospital*, Kansas City, Kan.
- MORRIS POLARY, *Kansas City General Hospital*, Kansas City, Mo.
- CHARLES WISLEY REID, *Louisville City Hospital*, Louisville, Ky.
- RAPHAEL M. RIVERA, *Bryan Memorial Hospital*, Lincoln, Neb.
- GUSTAVE A. ROY, *St. Joseph Hospital*, Kansas City, Mo.
- CHARLES ABRAHAM ROYER, *St. Francis Hospital*, Wichita, Kan.
- ARTHUR B. R. SMITH, *Mosmouth Memorial Hospital*, Long Beach, N. J.
- EDWARD OLNEY SHELTON, *St. John's Hospital*, St. Louis, Mo.
- GEORGE STAFFORD, *Touro Infirmary*, New Orleans, La.
- FRANK E. TOLLE, *St. Mary's Hospital*, Kansas City, Mo.
- CLAYTON J. TRAYLOR, *Bell Memorial Hospital*, Kansas City, Kan.
- DAVID P. TRIMBLE, *St. Joseph Hospital*, Kansas City, Mo.
- CHARLES CLINTON UNDERWOOD, *Bell Memorial Hospital*, Kansas City, Kan.
- DANIEL R. WILSON, *Bethany Hospital*, Kansas City, Kan.
- JESSE YOUNG, *Trinity Lutheran Hospital*, Kansas City, Mo.
- HAROLD ZUBER, *Kansas City General Hospital*, Kansas City, Mo.

Scholarships at the University of Kansas

Scholarships have been awarded at the University of Kansas as follows:

The Edwin Emery Slosson Scholarship in Science, established by Mrs. Slosson in 1911, was first awarded that year to KENNETH CRUMKINE of Lawrence. *The Slosson Fellowship* for 1932-33 has been awarded to CLYDE W. TOMBAUGH, of Burdette, discoverer of the planet, Pluto.

The German Exchange Scholarship for 1932-33 to WERNER BRUCKMANN of Frankfort-on-Main. The University of Kansas student chosen to go to Germany is AUSTIN VAN DER SLICE, A.B. 1927, M.A. 1930, of Lansing, Mich.

The German Exchange Scholar to the University of Kansas for 1931-32 was AUGUSTE DE CHAPARROUGE.

A Second German Exchange Scholarship was provided for 1931-32 by Otto F. Vollbrecht of Berlin. For this exchange GEORG BRANDAU came to the University of Kansas, and LEONARD O'BRYEN, A.B. 1930, of Lawrence, went to Germany.

Summerfield Scholarships for 1932-33 to ALFRED AMES, Beverly; NEWTON ARNSOLD, Wichita; HAROLD DYER, Oberlin; NEAL HARDY, Manhattan; ENOCH JOHNSON, Oange City; ROBERT LASHILLE, Junction City; SOL LINDENBAUM, El Dorado; WILLIAM MCCARROLL, Hutchinson; RALPH MCKIBBIN, Wichita; JAMES MOLBY, Salina; NELSON MORGAN, Hutchinson; MARLOW SHOWLANDER, Topeka; BILLY UTERMOHLEN, Kansas City.

This is the fourth year of Summerfield Scholarship awards, bringing to 46 scholars the number who will be in residence in 1932-33.

The Presser Foundation Scholarships: IGOR C. BUKETOFF of Bayonne, N. J., a freshman in the School of Fine Arts; HEKMINI SPOVER, of Amarillo, Texas, a junior in the School of Fine Arts; VIVYENNE BALLENGER of Eureka, a sophomore in the School of Fine Arts; and HERBERT CLEARAY of Lawrence, a freshman in the School of Fine Arts.

The Herbert Spencer Hadley Scholarship in Law, to EUGENE NIBDLINGER of Leavenworth, a second-year LAW.

The Eliza Perry Memorial Scholarship to GEORGE C. TROVILLO, JR., of Augustine, Ill., a freshman in the School of Fine Arts.

The Lucile Brown Rankin Memorial Scholarship to KATHERINE WATTS of Kansas City, Mo., a junior in the School of Fine Arts.

The Porter Scholarship in the School of Medicine to HAROLD VICTOR ZUBER of Kansas City, Mo.

The Arthur Jerome Boynton Memorial Scholarship to be shared by LEAHMAE BROWN of Lawrence, a junior in the College; and ESTIL JOSEPH KIOUS of Norcatur, a junior in the College.

The American Bankers' Association Scholarship to EARL HOWARD WOODFORD of Lawrence, a senior in the School of Business.

The Marcella Howland Memorial Scholarship to MARKJOY S. ERICSSON of Lawrence, a senior in the College.

The Charles S. Griffin Memorial Scholarship to GILBERT L. SPENCER of McPherson, a senior in the College.

The Women's Self Government Association Scholarship to FERN BAKER of Lebo, a junior in the College.

The Eliza Matheson Innes Memorial Scholarship to LILLIAN PETERSON of Kansas City, Mo., a senior in the School of Education.

The George Innes Memorial Scholarship to ELIZABETH PERRY of Oskaloosa, a senior in the College.

The Caroline Mansford Winston Memorial Scholarship to DOROTHY DIERING of Garnett, a senior in the College.

The Lawrence Branch of the American Association of University Women Scholarship to IRENE TOMLINSON of Garfield, a senior in the College.

The University Women's Club Scholarship to HAZEL OVERLY of Merriam, a sophomore in the College.

The Lathrop Bullene Memorial Scholarship to ESTHER V. BROOKSHART of Bunker Hill, a sophomore in the College.

The Sarah M. Emery Memorial Scholarship to HELEN DELL GOODE of Lenexa, a junior in the College.

The Ida H. Hyde Scholarship to HELEN JANE GARDNER of McLouth, a senior in the College.

The Torch Scholarship to MARGUERITE GREGG of Mayetta, a junior in the College.

The House Mothers' Association Scholarship to RAY MILLER of Latham, a junior in the College.

The Modern Book Club Scholarship to JOHN B. NEWELL of Topeka, a senior in the School of Engineering.

The Men's Student Council Scholarship to L. C. CAVITT, JR., of Red Oak, Texas, a senior in the School of Engineering and Architecture.

A Lucinda Smith Buchan Memorial Scholarship to EVELYN WOODEN of Albert, a senior in the College.

A Lucinda Smith Buchan Memorial Scholarship to NORINE LOUISE HOWARD of McPherson, a junior in the College.

A Betty Washington Chapter of the Daughters of the American Revolution Scholarship to DORRICE SNYDER of Hutchinson, a senior in the College.

The Frank Egbert Bryant Memorial Scholarship to LOIS E. SCROGINS of Courtland, a sophomore in the College.

The Max Lowell Brown Memorial Scholarship to OSWALD B. LEX of Wilson, a sophomore in the College.

A Gertrude Bullene Weaver Memorial Scholarship to GAREL A. GRUNDER of Byers, a senior in the College.

A Gertrude Bullene Weaver Memorial Scholarship to LUKE J. DEBALD of Wright, a senior in the College.

A Friends in Council Scholarship to LEONA M. JENSON of Tulsa, Okla., a junior in the School of Fine Arts.

A Friends in Council Scholarship to MYRA LORIMER of Olatche, a sophomore in the College.

The Lucie March Memorial Scholarship to ELIZABETH HATTWICK of Mill Hall, Pa., a sophomore in the College.

The Junction City Branch of the American Association of University Women Scholarship to BOYDIE RECH of Lyndon, a graduate student.

The El Dorado Women's Pan-Hellenic Association Scholarship to ELSIE PENFIELD of Arkansas City, a senior in the College.

The Round Table Scholarship to MYRA WARNER of Topeka, a sophomore in the College.

The Omicron Nu Scholarship to LORENE KALKBUNNER of Lawrence, a junior in the College.

The Ingridie Club Scholarship to BENITA L. JONES of Coffeyville, a senior in the College.

The Ladies' Literary League Scholarship to WANDA PERRIN of Topeka, a sophomore in the College.

The Pi Lambda Theta Scholarship to IONE GLADYS KELLEY of Ocala, a senior in the College.

A Chapter A.Z. of P.E.O. Scholarship to DOROTHY E. MORGAN of Lawrence, a junior in the College.

The Kappa Kappa Gamma Scholarship to NAOMI R. HILDENBRAND of Topeka, a sophomore in the College.

The Reserve Scholarship to HORTENSE MARIE HARRISON of Leavenworth, a graduate student.

The Frances Schlegel Gerrath Scholarship, to the graduate of Lawrence High School passing the best examination in two-year's entrance German at the University, to CHARLES DREHER.

The holders of the Watkins Hall Scholarships in the year 1931-32 were as follows:

HENRIETTA BATES, Salina; VIVIAN CHESTNUTT, Logan; PAULINE COX, Topeka; FRANCES K. CREILY, Kansas City, Mo. PAULINE DONOVAN, Edgerton; LOUISE EVERITT, Cherokee; LUCILLE GODARD, Coffeyville; VIVIAN GOULD, Parsons; FRANCES VIVIAN GREER, Olathe; MARY HART, Wellington; ELIZABETH HATTWICK, Mill Hall, Pa.; NAOMI HILDENBRAND, Topeka; VALIE JOHNSON, Miller; BENITA L. JONES, Coffeyville; MARIAN LAKE, Kansas City; JOSEPHINE LEE, Louisburg; DOROTHY LIGHTBURN, Ft. Crook, Neb.; MYRA LORIMER, Olathe; SUSIE MANCHESTER, Paola; HARRIET D. McMAHON, Kansas City; CATHERINE B. MONROE, Leavenworth; WANDA PERRIN, Topeka;

SALLY SALATHIEL, Independence; KATHERINE SCHELLENBERG, Hillsboro; LOIS SCOGGINS, Courtland; MARY CAROLYN STARK, Topeka; EDITH STINSON, Wilson; INGEBORG SWANSON, McPherson; ELIZABETH TAXACHER, Kansas City; MARTHA TELLMAN, Topeka; YELMA TEMPERO, Clay Center; LOIS UNDERWOOD, Princeton; MAURINE UNSRUB, Great Bend; MYRA WARNER, Topeka; LUCILE WEISS, Clay Center; NEVA WHITMER, Wilson; AMY WINSTON, Hartsville, Tenn.; and EVELYN WORDEN, Hutchinson.

Prizes

Prizes have been awarded as follows to students of the University of Kansas in the academic year 1932-33:

- The University Honor Award* for 1931 to the senior man whose influence on the University student life was adjudged most wholesome and helpful, to M. WREN GABEL of Larned.
- Honors in English* to JOHN WILLIAMS of Lawrence, a senior in the College; and LEBLIE ABRAM RUTLEDGE of Dunlap, a senior in the College.
- The Samuel Wendell Williston Undergraduate Honors in Geology* to MELVERN BEAR of Harper, a senior in the School of Engineering and Architecture; HENRY ROSS of Brooklyn, N. Y., a senior in the School of Engineering and Architecture; and ROBERT B. TOTTEN of Chicago, a senior in the College.
- The Honor Graduate of the R. O. T. C.*; CADET CAPTAIN RALEIGH HUNTER MACKLIN of Greeley, a sophomore in the School of Engineering and Architecture; and CADET LIEUTENANT GEORGE L. POOR of Iola, a senior in the School of Business.
- The Phi Chi Theta Scholarship Key* to the woman of the School of Business ranking highest in scholarship, activities, and leadership, to HELEN TOMLINSON of Topeka.
- The Dr. E. H. S. Bailey Award in Chemistry* to NORMAN REVULO HOWARD of Ottawa, a senior in the School of Engineering and Architecture.
- The Hattie Elizabeth Levin Prize Essay in Applied Christianity*: First Prize to FREDERICK E. WIRTH of Brewster for an essay on "Socialism: The Political Religion of a Christian." Second Prize to DOROTHY ELIZABETH NEWLIN of Lawrence for an essay on "World Peace."
- Third Prize* is divided between two contestants; half going to CONRAD M. BARNES of Fillmore for an essay on "Communism"; and half going to MARGARET LAWSON of Lawrence for an essay on "What Price Coloe?"
- Fourth Prize* to KATHERINE KAULL of Lawrence for an essay on "Church Unity."
- The William Herbert Carruth Memorial Poetry Prizes*: First Prize to DICK SUTTON JONES of Lawrence, a senior in the College, for his poem, "Lave Moder, let me in." Second Prize to RAY MILLER of Latham, a sophomore in the College for his poem, "Nurth of Towal: a Sonnet Sequence." Third Prize to CLARICE EVELYN SHORY of Briggsville, Ark., a senior in the College, for her poem, "Threnody."
- Honorable Mention* was given to ELEANOR HENDERSON of Lawrence, a graduate student, for her poem, "Reincarnation," and to WILLIAM M. HOWIE of Lawrence, a senior in the School of Fine Arts, for his poem, "Of Youth."
- The Delta Sigma Pi Scholarship Key* to the ranking man in the School of Business to RICHARD L. HARRINGTON of Independence, Mo.

- The Lambda Chapter of Chi Omega Prize* for the ranking woman student in the department of economics in the College of Liberal Arts and Sciences or the School of Business to HELEN TOMLINSON of Topeka.
- The Lahn and Fink Gold Medal* in the School of Pharmacy to MAURICE GLEN SMOLT of Newton, a third-year student in the School of Pharmacy.
- The National Association of Drug Clerks Prizes* to HARRY WINKLER, of Casey; MAURICE GLENN SMOLT, of Newton; and MARLEY G. ROWE, of Wichita.
- The Sigma Tau Scholarship Medal* to the sophomore in the School of Engineering and Architecture having the highest freshman scholastic standing, to ROBERT E. GANOUNG, of Salina.
- The Kansas State Section of the American Society of Civil Engineers Award* of a junior membership in the American Society of Civil Engineers, to the civil engineer with the highest grades for the four year's work to IRVING L. COFFMAN, of Kansas City, Mo.
- The American Institute of Architects Medal* for excellence in architectural work throughout the course, to JOHN G. BARNES, Jr., of Leavenworth.
- The Thayer Medal* for 1931 for excellence in architectural design, to JOHN A. BROWN, of Lansing.
- The Scarab Medal*, presented by the Scarab fraternity, for excellence in sophomore design, to DICK WULF, of Kansas City, Mo.
- The Alice Clibbenden Prize* for excellence in freshman architectural work, to HUGH W. HARTY of Kansas City, Mo.
- The George Innes Mastic Scholarship* to VIRGINIA THIES of Kansas City, a sophomore in the School of Fine Arts.
- The Mrs. John T. Stewart Art Scholarship* to GLADYS MAE MYERS of Lawrence, a sophomore in the School of Fine Arts; and MARGARET BRINTON of Kansas City, Mo., a freshman in the School of Fine Arts.
- The Mrs. John T. Stewart Music Scholarship* to MARY LOU BECKER of Cherryvale, a freshman in the School of Fine Arts.
- The Rowlands Prize in Design* to MARJORIE SHADER, of Lawrence, a special student in the School of Fine Arts.
- The Rowlands Prize in Antique Drawing* to HARRIET DANIELS, of Lawrence, a freshman in the School of Fine Arts.
- The J. A. Keeler Prize in Painting* to KATHRYN LORENDA PATTON, of Burlington, a freshman in the School of Fine Arts.
- The Henry Scott Memorial Prize in Advertising* to ROBERT BYRDEN REED of Eureka, and CHARLES EDWIN SNYDER of Leavenworth, seniors in the College of Liberal Arts.
- The Mrs. Don Carlos Short Story Prize* to JANE B. PRICE of Atchison.
- The Sigma Delta Chi National Scholarship Award* to KATHERINE MAY MORRIS of Kansas City, Mo.; CHARLES EDWIN SNYDER of Leavenworth; FRID L. FLEMING of Emporia; and LELA M. HACKNEY of Wellington.
- Scholarship at the Art Student's League of New York*, 1932-33, to J. JAMES PENNEY, of Lawrence, a senior in the School of Fine Arts.
- The Alpha Rho Chi Medal*, first awarded in 1932-33, by the national architectural fraternity of Alpha Rho Chi to the senior giving promise of professional merit through attitude and personality, to OLGA WALLACE of Yates Center.
- The Alpha Chi Sigma Honor Award in Chemistry* to CLARE C. STEPHENSON, of Augustus, a senior in the College.



UNIVERSITY OF KANSAS
LAWRENCE

Sixtieth Annual
COMMENCEMENT

JUNE 3 TO 6, 1932



Program of Events

FRIDAY, JUNE 3

8:00 p.m. Commencement Recital, University Auditorium, School of Fine Arts.

SATURDAY, JUNE 4

9:00 a.m. Golf for Visiting Alumni, Lawrence Country Club.

10:00 a.m. Alumni Registration Opens, Memorial Union.

3:00 p.m. Baseball, Varsity Field, Seniors vs. Alumni and Faculty.

4:00 p.m. Engineers Meeting, Marvin Hall.

5:30 p.m. Torch Chapter Mortar Board Reunion at Wiedemann's.

6:00 p.m. Sachem Powwow. (Ask place at registration desk.)

7:30 p.m. Open Air Band Concert. Dyche Museum Steps, K.U. Band.

8:30 p.m. Chancellor's Reception, Memorial Union.

9:30 p.m. Alumni-Senior Reunion Dance.

SUNDAY, JUNE 5

- 11:00 a.m. Commencement Services at all Lawrence Churches.
- 2:00 p.m. Open House all University Buildings.
- 2:15 p.m. Band Concert, Fowler Grove.
- 2:30 p.m. Reunion Wesley Foundation, Price home, 1209 Tennessee.
- 3:00 p.m. Dedication of Watkins Memorial Hospital, in front of Hospital.
- 3:30 p.m. Reunion Tea, Kappa Beta (formerly Bethany Circle), Myers Hall.
- 3:30 p.m. Reunion Tea, Kappa Phi, Price home, 1209 Tennessee.
- 4:30 p.m. Class and Group Reunion Dinners. All Reunion Headquarters at Memorial Union.
- Class of 1882.
- Class of 1907.
- Group of 1888-'89-'90-'91.
- Group of 1926-'27-'28-'29.
- 7:00 p.m. Baccalaureate Sermon and Exercises, Stadium. Sermon by Rabbi Ferdinand M. Isserman, of Temple Israel, St. Louis.

MONDAY, JUNE 6

- 7:15 a.m. Class of 1932 Breakfast, Memorial Union.
- 7:30 a.m. Y.W. Cabinet and Alumnae Strawberry Breakfast, Henley House.
- 9:00 a.m. Presentation of Judge Nelson Timothy Stephens Portrait, Law Building Library.
- 10:00 a.m. Annual Alumni Association Meeting, Fraser Hall.
- 11:00 a.m. Annual Alumni Address, Fraser Hall, by John E. Carlson, 1'09.
- 12:15 p.m. University Dinner, Memorial Union.
- 2:00 p.m. Play for Parents of Graduating Students, in Fraser Hall Theater.
- 3:00 p.m. Meeting Trustees, Endowment Association, Room 303 Administration Building.
- 4:00 p.m. Phi Beta Kappa Annual Meeting, 218 Administration Building.
- 5:30 p.m. Lunches served at University Cafeteria.
- 7:00 p.m. Commencement Exercises, Stadium. Address by Walter Dill Scott, President of Northwestern University, Evanston, Ill.

UNIVERSITY OF KANSAS
SCHOOL OF FINE ARTS

COMMENCEMENT RECITAL

Friday, June 3, 1932

UNIVERSITY AUDITORIUM
8:00 P.M.

Programme

- Organ:* TOCCATA AND FUGUE IN D MINOR *Bach*
WILLIAM HOWIE
- Piano:* CAPRICCIO IN F SHARP MINOR *Bortbkiewicz*
CAROLINE ROB HOUSE
- Piano:* PARAPHRASE ON "Sleeping Beauty Waltz" *Tschaikowsky-Pabst*
DOROTHY MOORE
- Voice:* AIR: BUT WHO MAY ABIDE, from "Messiah" *Handel*
ROBERT MILTON
- Piano:* CANTIQUE D'AMOUR *Liszt*
LUCILE GABEL
- Violin:* GUITARRE *Moszkowski-Sarasate*
HELEN STOCKWELL
- Piano:* REFLETS DANS L'EAU *Debussy*
MARTHA MAE BAUGH
- Piano:* MARCHE MILITAIRE *Schubert-Tausig*
KATHERINE KAULL
- Voice:* ARIA: PACE, PACE, MIO DIO from "La Forza
del Destino" *Verdi*
AGNES SMITH
- Piano:* POLONAISE IN E MAJOR *Liszt*
RUTH SPINDLER
- Voice:* ARIA: DEPUIS LE JOUR, from "Louise" *Charpentier*
ENTERPRISE KNOX
- Piano:* HUNGARIAN RHAPSODIE, No. 12 *Liszt*
EVELYN SWARTHOUT
- Organ:* SYMPHONIE I *Vierne*
Finale—Allegro
GAVIN DOUGHTY



ANNUAL
TORCH-MORTAR BOARD BANQUET
June 4, 1932

MENU

Fruit Cocktail

Nuts

Olives

Escalloped Chicken

Brown New Potatoes

Buttered New Peas

Rolls

Combination Salad

Waffers

Fresh Strawberry Sundae

Coffee

Ice Tea

PROGRAM

President Alumna Group
Erma Spangler

1. Torch
Our Twentieth Anniversary
The Founders
2. Mortar Board
Our Affiliation
Elizabeth Dunkle
3. The Present Members
Active Group
Myra Little
4. The Past Members
Alumna Group
Lucille Ellsworth
5. Introductions
6. Short Business Meeting
 - a. Scholarship report
 - b. Nominating report